

SECTION **PB**  
PARKING BRAKE SYSTEM

A  
B  
C  
D  
E  
PB  
G  
H  
I  
J  
K  
L  
M

CONTENTS

<b>NOISE, VIBRATION AND HARSHNESS (NVH)</b>		
<b>TROUBLESHOOTING</b> .....	<b>2</b>	
NVH Troubleshooting Chart .....	2	
<b>PARKING BRAKE SYSTEM</b> .....	<b>3</b>	
On Board Inspection and Service .....	3	
LEVER STROKE .....	3	
Adjustment .....	3	
Components .....	4	
Removal and Installation .....	4	
REMOVAL .....	4	
INSTALLATION .....	5	
<b>SERVICE DATA AND SPECIFICATIONS (SDS)</b> .....	<b>6</b>	
Parking Brake .....	6	

# NOISE, VIBRATION AND HARSHNESS (NVH) TROUBLESHOOTING

## NOISE, VIBRATION AND HARSHNESS (NVH) TROUBLESHOOTING

PFP:00003

### NVH Troubleshooting Chart

BFS0008T

Use the chart below to help you find the cause of the symptom. If necessary, repair or replace these parts.

		Reference page	BR-28	—	BR-27	BR-28	—	BR-28	—	—	—	NVH in RAX section	NVH in RSU section	NVH in WT section	NVH in WT section	NVH in PS section	
		Possible cause and SUSPECTED PARTS	Linings - damaged	Linings - uneven wear	Return spring damaged	Drum imbalance	Drum damage	Drum runout	Drum deformation	Drum deflection	Drum rust	AXLE	SUSPENSION	TYRES	ROAD WHEEL	STEERING	
Symptom	BRAKE	Noise	X	X	X							X	X	X	X	X	
		Shake				X						X	X	X	X	X	X
		Shimmy, Judder				X	X	X	X	X	X	X	X	X	X	X	X

X: Applicable

# PARKING BRAKE SYSTEM

## PARKING BRAKE SYSTEM

PFP:36010

### On Board Inspection and Service LEVER STROKE

BFS0008U

- Operate parking brake lever with a force of 196 N (20 kg, 44.1 lb). Check if stroke is within specified number of notches. (Check it by hearing clicks of ratchet.)

**Lever stroke : 8 - 9 notches**

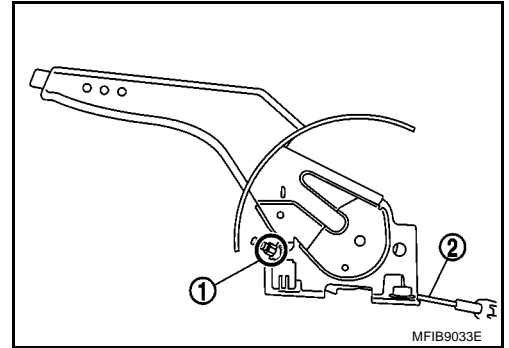
### Adjustment

BFS0008V

1. Insert a socket wrench into opening of parking brake lever. Rotate adjusting nut (1) to fully loosen cable (2), then return parking brake lever.
2. Depress the foot brake several times (minimum 10 times) and adjust the rear shoe clearance.

**NOTE:**

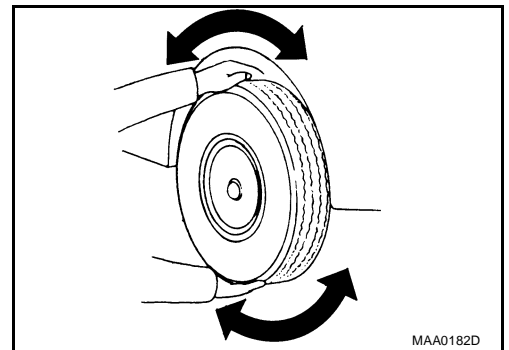
Be sure to securely depress the foot brake.



3. Rotate the road wheels to make sure that there is no drag.
4. Use the following procedure to adjust the cable.
  - a. Pull the lever up to the position where a socket wrench can be inserted.
  - b. Insert a socket wrench into the opening of the lever, and rotate the adjusting nut to adjust lever stroke.

**NOTE:**

Do not reuse adjusting nut after removing it.

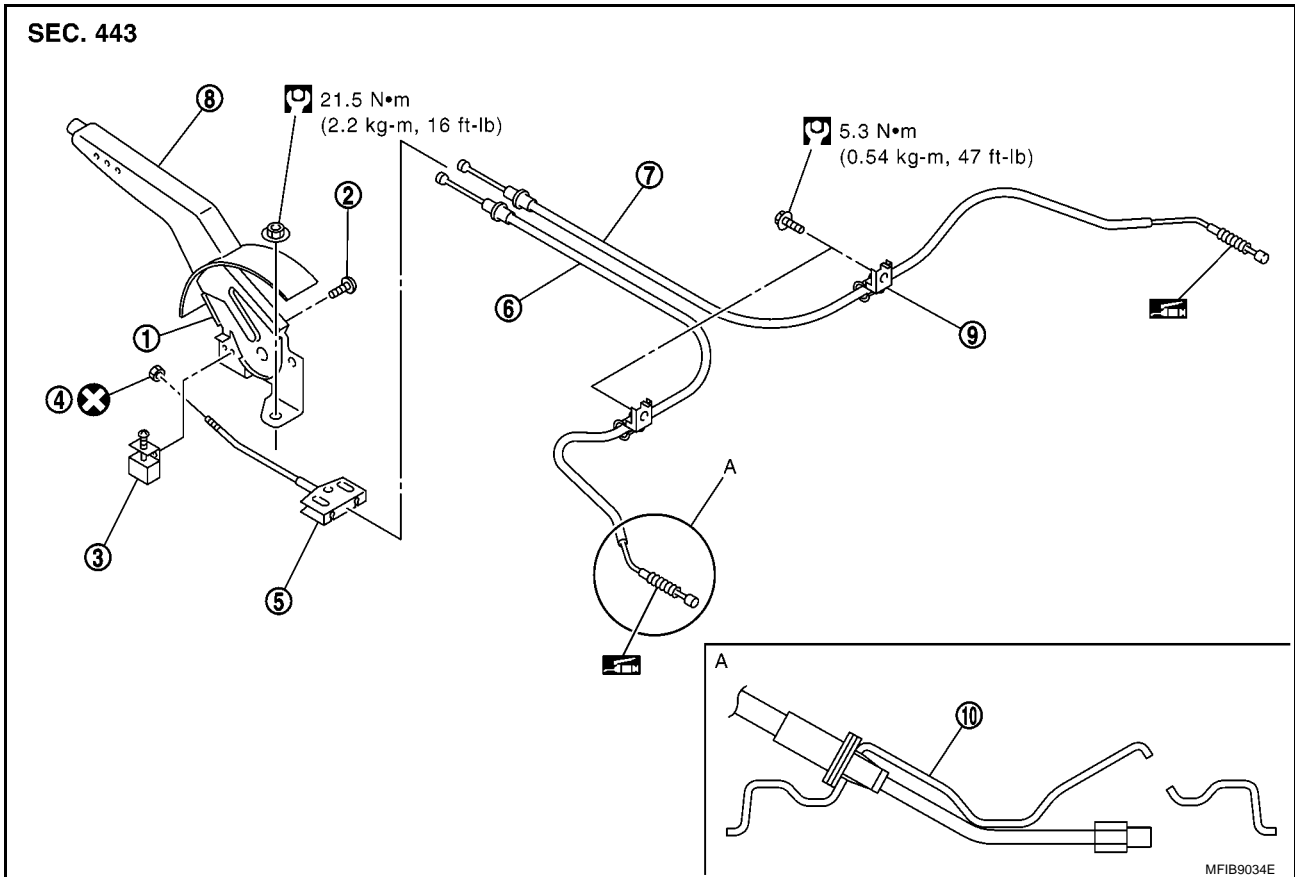


- c. After operating the lever about 10 times with a force of 196 N (20 kg, 44.1 lb), make sure that the lever stroke is within the specified number of notches.
  - d. With the lever completely returned, make sure that there is no drag on the rear brake.
5. Check brake warning lamp on Combination meter comes on when parking brake is applied by 1 notch or less, and goes out again when parking brake lever returns to off position.
  6. Check if the ratchet engages and releases securely and smoothly.
  7. Check if initial free play of the lever is maximum 20 mm at the end of the release button and check operating force of release button is 4.9 N (0.50 kg, 1.10 lb) at full stroke point.

# PARKING BRAKE SYSTEM

## Components

BFS0008W



## Removal and Installation

### REMOVAL

BFS0008X

1. Remove the center console. Refer to [IP-4, "INSTRUMENT PANEL ASSEMBLY"](#).
2. Disconnect warning lamp switch connector.
3. Loosen adjusting nut and separate the rear left and rear right cable from front cable.
4. Remove device assembly tightening nuts, and remove device assembly from vehicle.
5. Remove tyre from vehicle.
6. Remove rear brake shoe assembly and remove cable from the operating lever. Refer to [BR-27, "Components"](#).
7. Remove the center and rear heat plates. Refer to [EX-3, "EXHAUST SYSTEM"](#).
8. Release fuel tank clips. Refer to [FL-8, "FUEL TANK"](#) (CR), [FL-19, "FUEL TANK"](#) (HR), [FL-31, "FUEL TANK"](#) (K9K).
9. Remove rear cable mount fixing bolts and remove rear cables from the vehicle.

# PARKING BRAKE SYSTEM

---

## INSTALLATION

- 1. Install in the reverse order of removal. Tighten nuts and bolts to the specified torque.
- 2. Adjust the parking brake. Refer to [PB-3, "Adjustment"](#) .

A  
B  
C  
D  
E  
**PB**  
G  
H  
I  
J  
K  
L  
M

# SERVICE DATA AND SPECIFICATIONS (SDS)

## SERVICE DATA AND SPECIFICATIONS (SDS)

PFP:00030

### Parking Brake

BFS0008Y

Control type	Center lever
Lever stroke [operating force 196 N (20 kg, 44.1 lb)]	8 - 9 notches
Full stroke	15 notches
Brake warning lamp stroke	1 notch or less