

INSTRUMENT PANEL

SUBARU

SVX

1992

	Page
C COMPONENT PARTS	2
1. Console Box	2
2. Instrument Panel	3
W SERVICE PROCEDURE AIRBAG	5
1. Supplemental Restraint System "Airbag"	5
2. Console Box	5
3. Instrument Panel	6

Precaution for Supplemental Restraint System "Airbag"

The Supplemental Restraint System "Airbag" helps to reduce the risk or severity of injury to the driver in a frontal collision.

The Supplemental Restraint System consists of an airbag module (located in the center of the steering wheel), sensors, a control unit, warning light, wiring harness and spiral cable.

Information necessary to service the safety is included in the "5-5. SUPPLEMENTAL RESTRAINT SYSTEM" of this Service Manual.

WARNING:

- To avoid rendering the Airbag system inoperative, which could lead to personal injury or death in the event of a severe frontal collision, all maintenance must be performed by an authorized SUBARU dealer.
- Improper maintenance, including incorrect removal and installation of the Airbag system, can lead to personal injury caused by unintentional activation of the Airbag system.
- All Airbag system electrical wiring harnesses and connectors are covered with yellow outer insulation. Do not use electrical test equipment on any circuit related to the Supplemental Restraint System "Airbag".



C COMPONENT PARTS

1. Console Box

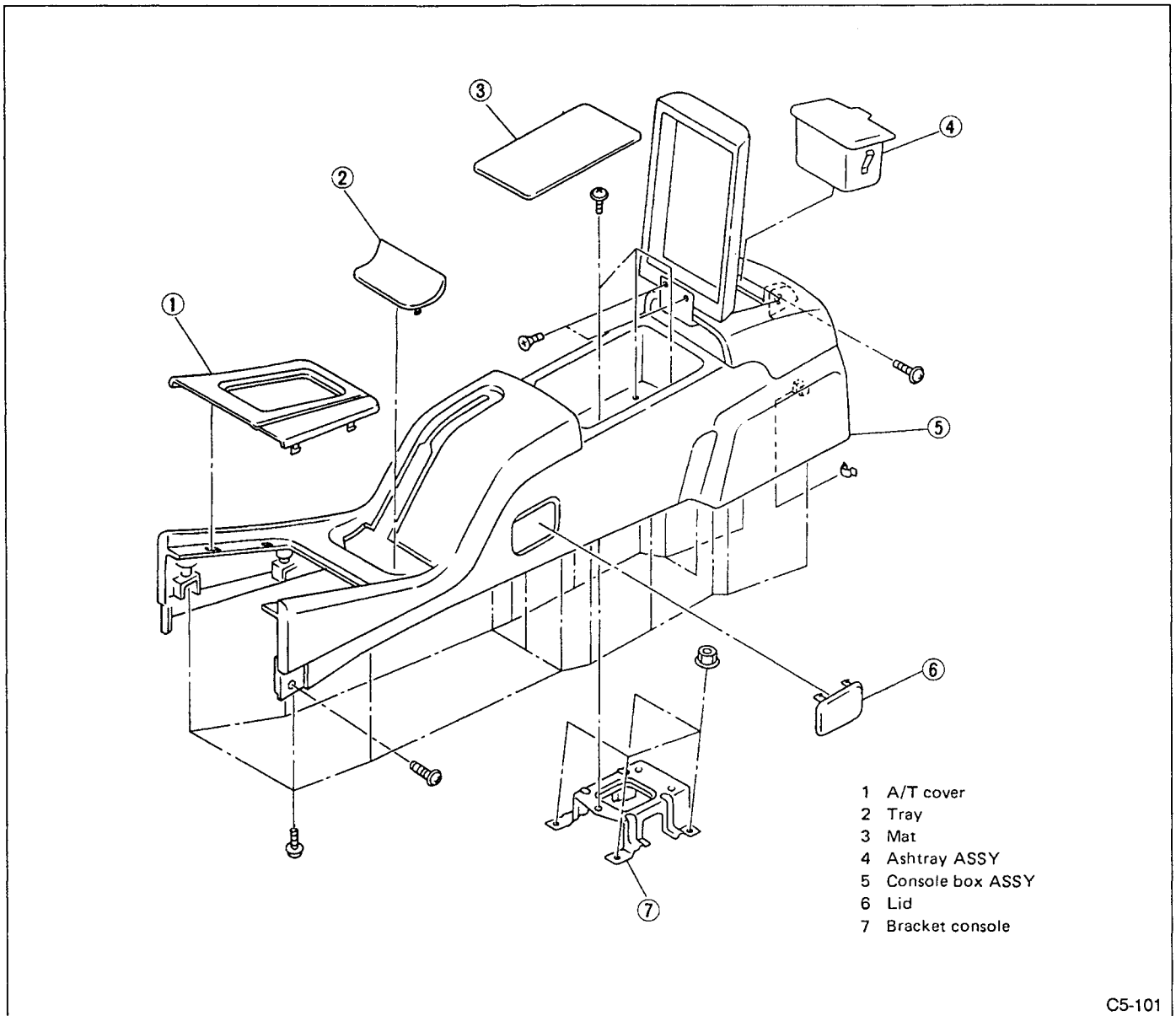
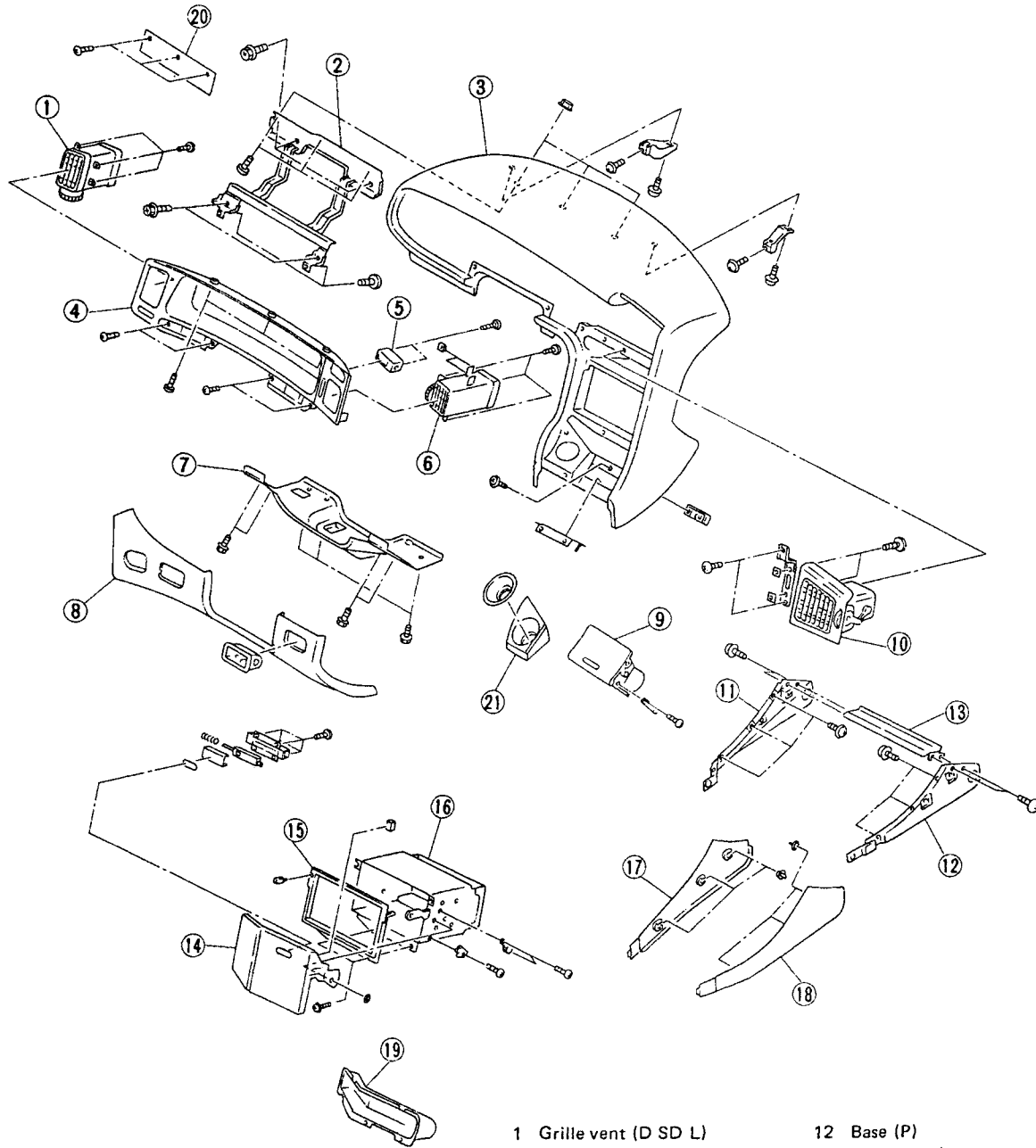


Fig. 1

C5-101

2. Instrument Panel



- | | |
|--------------------------|------------------------|
| 1 Grille vent (D SD L) | 12 Base (P) |
| 2 Bracket console compl. | 13 Base (CTR) |
| 3 Pad & frame B | 14 Cover audio |
| 4 Visor | 15 Panel radio |
| 5 Clock | 16 Audio holder |
| 6 Grille vent (D CTR) | 17 Console panel (LH) |
| 7 Panel lower cover | 18 Console panel (RH) |
| 8 Cover lower | 19 Cover audio lid |
| 9 Ashtray ASSY | 20 Cover column |
| 10 Grille vent (P CTR) | 21 Panel cigar lighter |
| 11 Base (D) | |

Fig. 2

C5-102

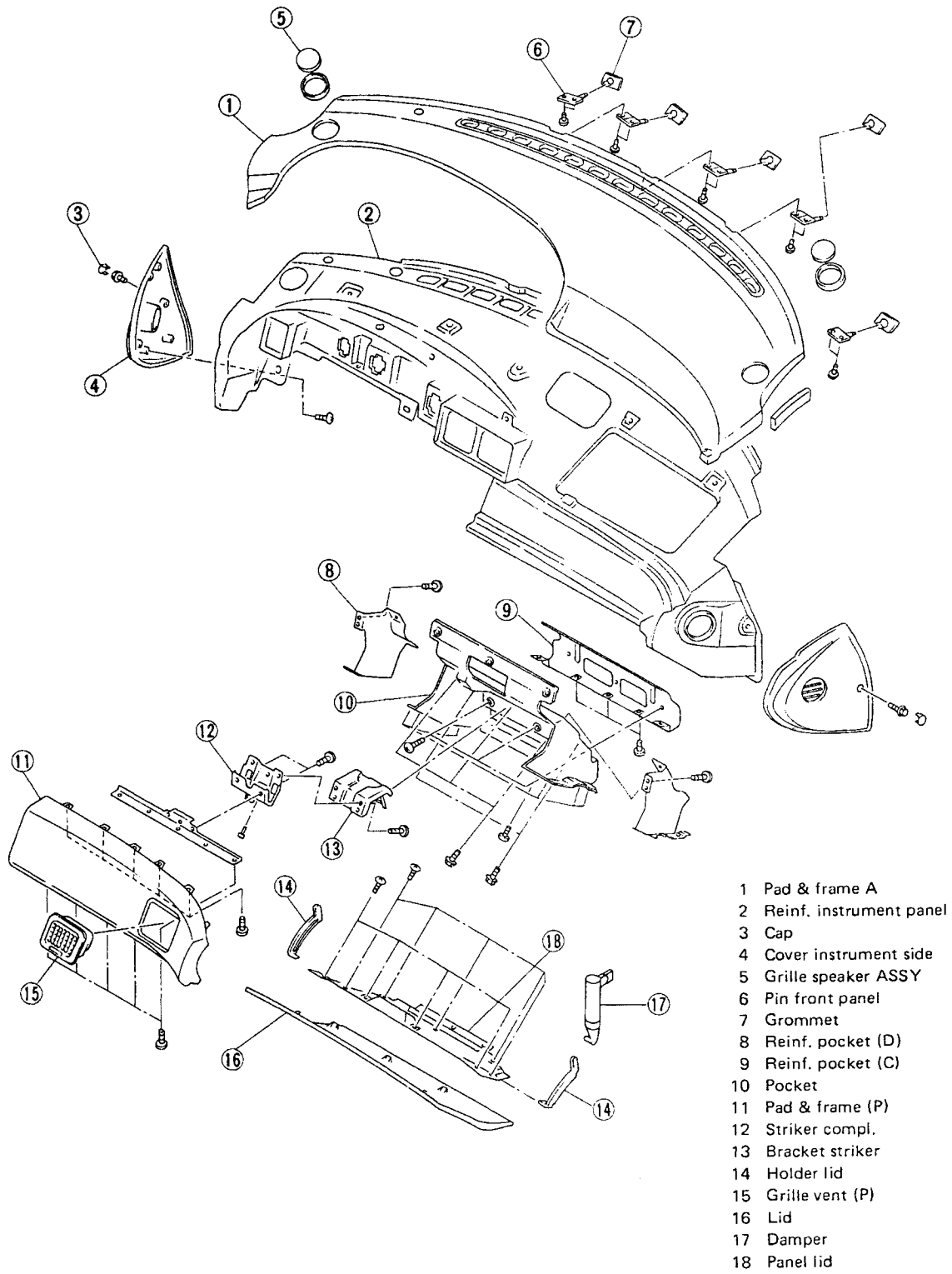


Fig. 3

C5-126

W SERVICE PROCEDURE **AIRBAG**

1. Supplemental Restraint System "Airbag"

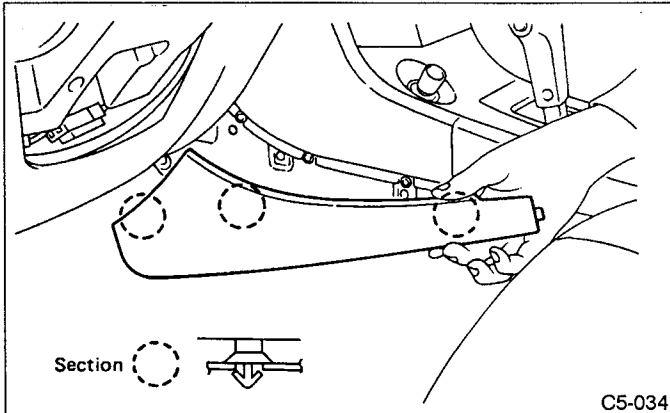
Airbag warning system is located in the combination meter.

- a. All Airbag system wiring harness and connectors are colored yellow. Do not use electrical equipment on these circuit.
- b. Be careful not to damage Airbag warning system wiring harness when servicing the combination meter.

2. Console Box

A: REMOVAL

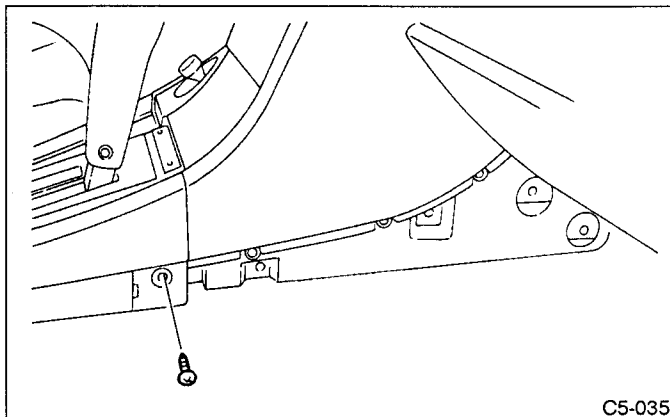
- 1) Disconnect ground cable from battery.
- 2) Remove console panel by taking off three clips from both sides.



C5-034

Fig. 4

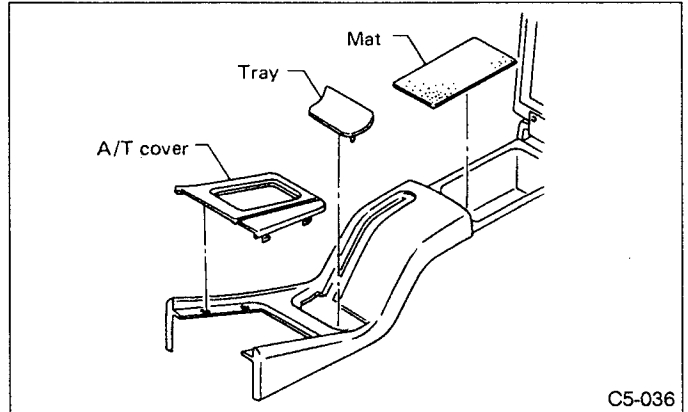
- 3) Remove two screws from both the left and right sides.



C5-035

Fig. 5

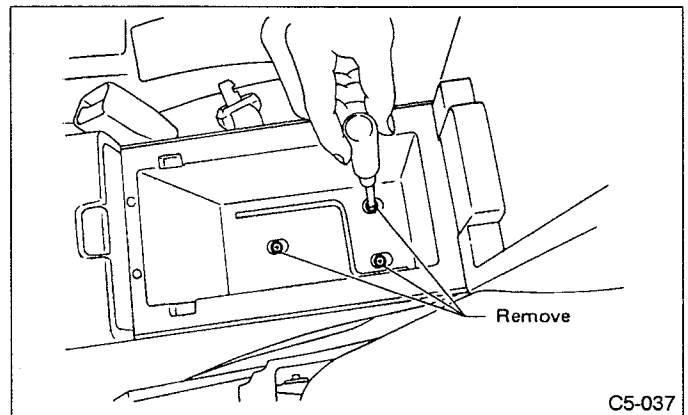
- 4) Remove automatic transmission cover, tray and console box mat.



C5-036

Fig. 6

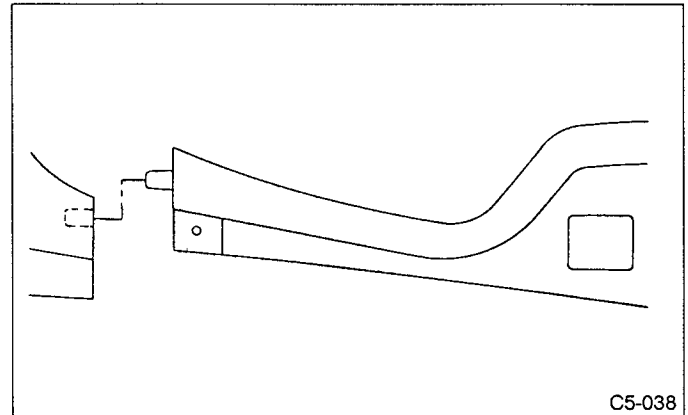
- 5) Remove three screws from console box.



C5-037

Fig. 7

- 6) Remove console box by lifting up while slightly pulling it backward.



C5-038

Fig. 8

B: INSTALLATION

- 1) Installation is in the reverse order of removal.

3. Instrument Panel

A: REMOVAL

CAUTION:

Be sure to hold socket section when disconnecting, not harness.

- 1) Disconnect ground cable from battery.
- 2) Remove console box.
- 3) Remove front pillar upper trim. (Refer to 5-3 [W11A0].)
- 4) Remove radio grounding wire.

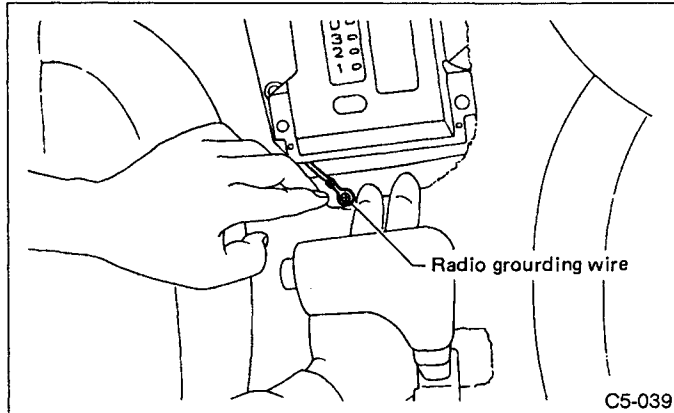


Fig. 9

- 5) Remove remote controlled rearview mirror switch and internal bolt.
Remove screw rivet located on lower side of lower cover.

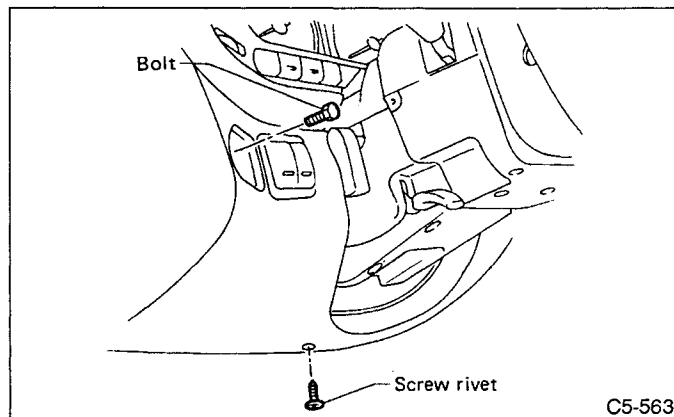


Fig. 10

- 6) Remove lower cover by removing six clips and three connectors.

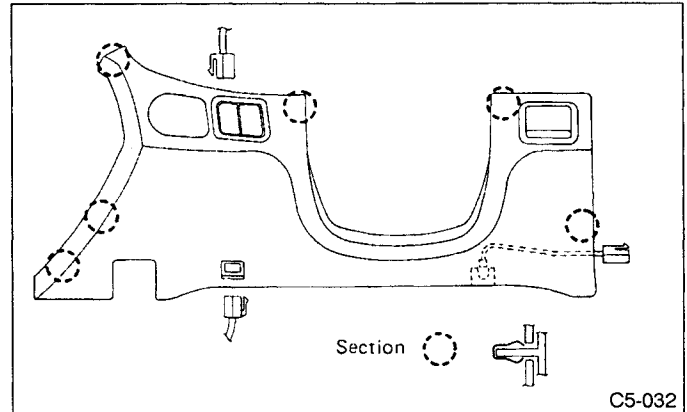


Fig. 11

- 7) Remove panel lower cover by removing four bolts.

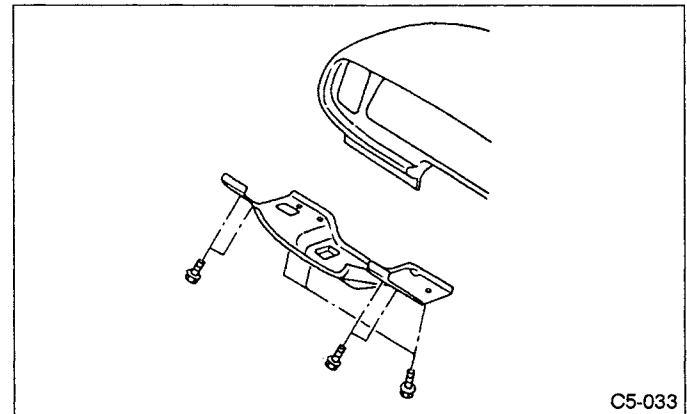


Fig. 12

- 8) Disconnect airbag connector at harness spool. (Refer to 5-5 [M1B6].)

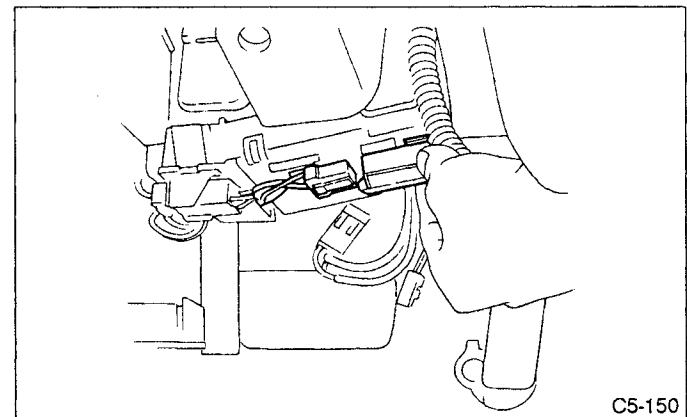


Fig. 13

9) Remove two screws from both the left and right sides.

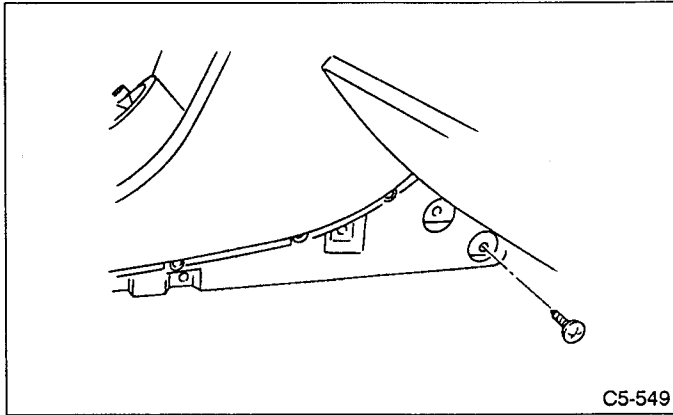


Fig. 14

11) Remove caps from both ends of instrument panel, and remove bolts.

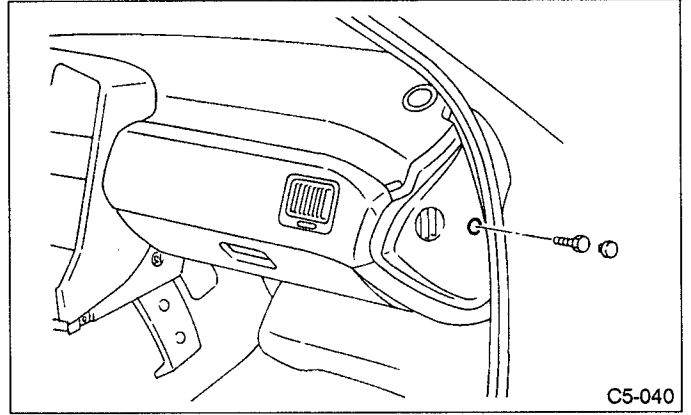


Fig. 16

10) Lower steering column.

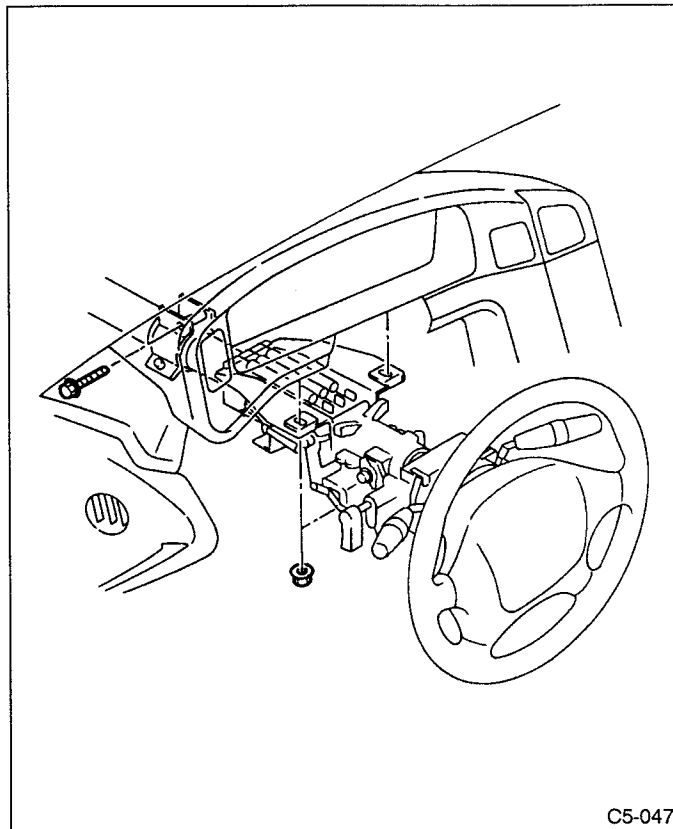


Fig. 15

12) Remove two instrument panel switches by pressing forward. Disconnect switch connectors.

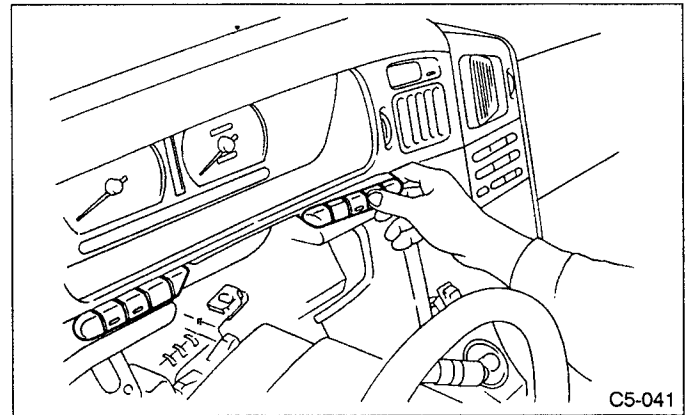


Fig. 17

13) Remove visor by removing seven screws, and disconnect clock connector.

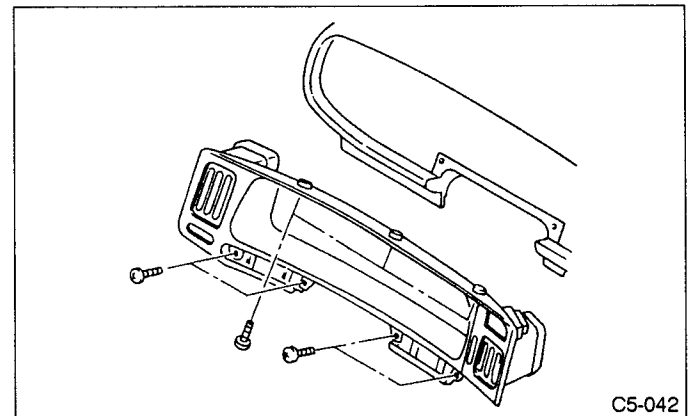


Fig. 18

14) Remove combination meter by removing six screws.

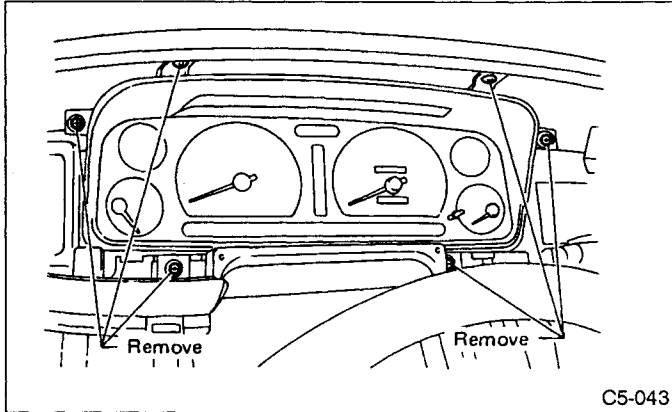


Fig. 19

15) Remove four bolts in meter visor.

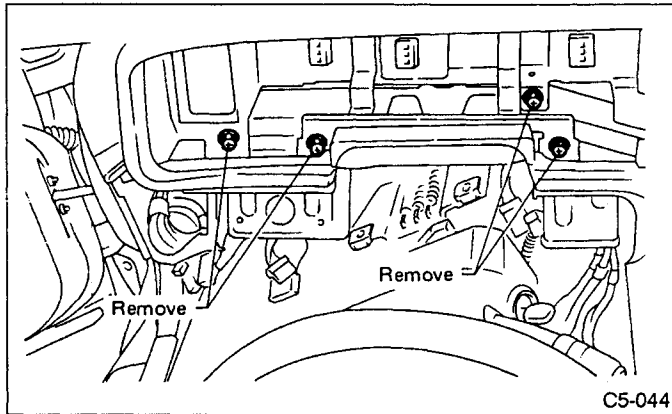


Fig. 20

16) Remove five screws in glove box.

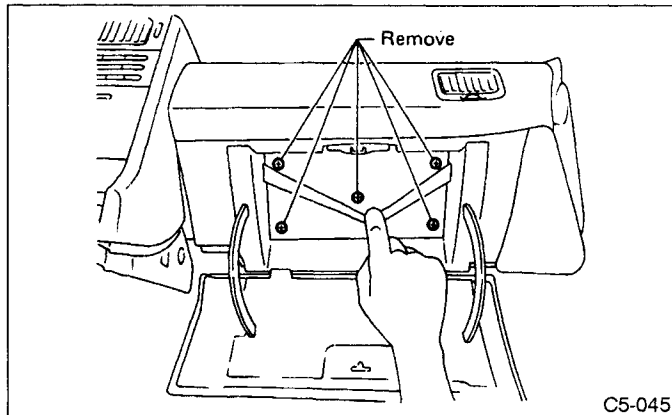


Fig. 21

17) Disconnect instrument harness and body harness at six connectors, and disconnect antenna lead at two places.

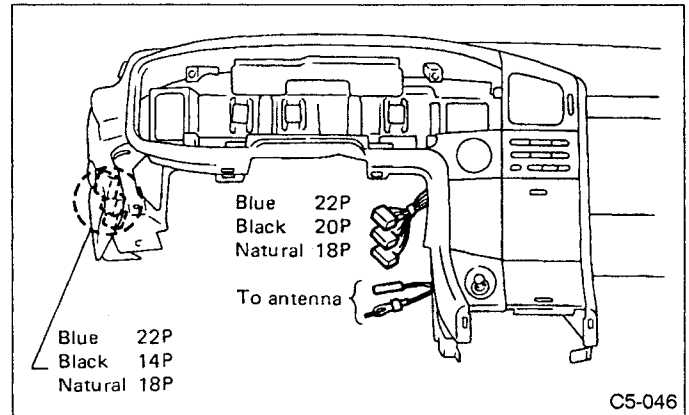


Fig. 22

18) Cover automatic transmission select lever and surrounding portion with cloth to avoid damaging.
 19) Remove instrument panel by pulling it forward.

B: INSTALLATION

- 1) Installation is in the reverse order of removal. Observe the following:
- 2) Push instrument panel into position by aligning five pins at the end of instrument panel with corresponding grommets on body side.

CAUTION:
 Avoid jamming of any wire harness when installing instrument panel.

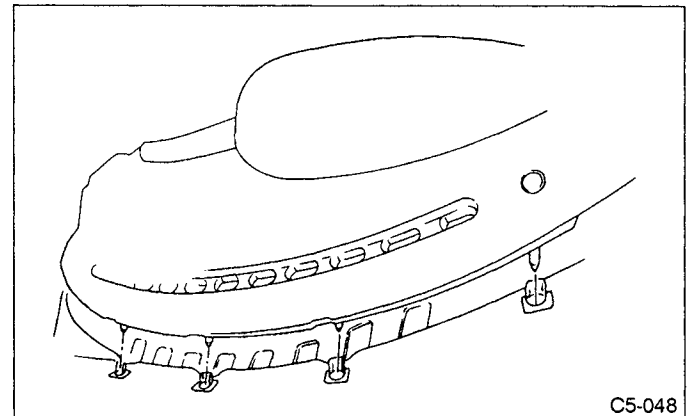


Fig. 23

3) Set clips located at both inside ends of instrument panel onto body side.

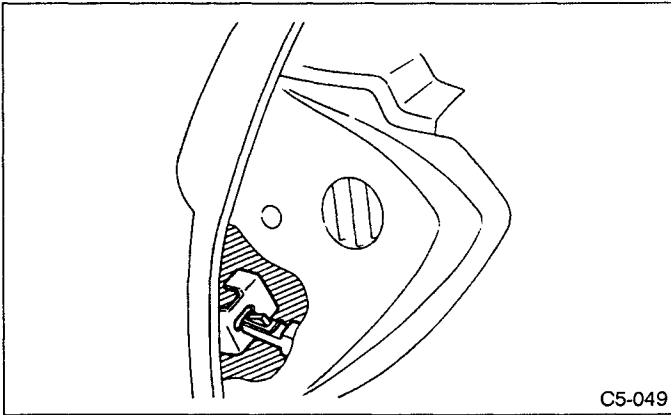


Fig. 24