

# BRZ

## 2015 Quick Reference Guide

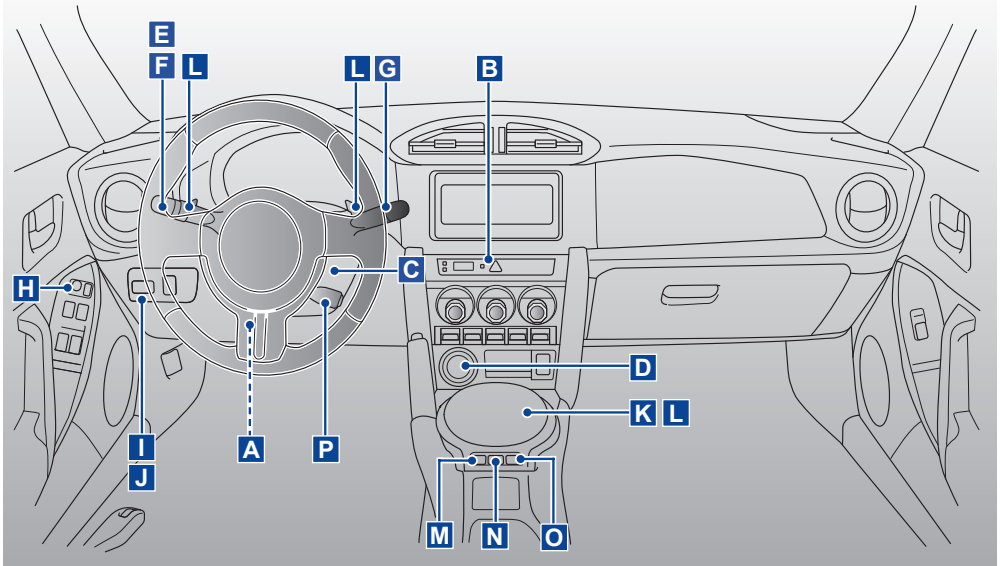


**SUBARU**

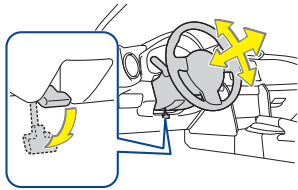
*Confidence in Motion*



# DRIVER'S AREA

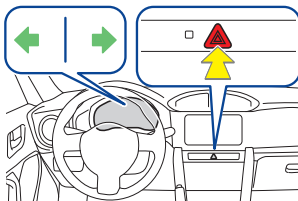


## A Tilt/telescopic steering wheel



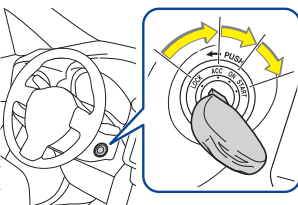
Hold the steering wheel and push the lever down. Adjust to the ideal position by moving the steering wheel horizontally and vertically. After adjustment, pull the lever up to secure the steering wheel.

## B Hazard warning flasher



Press the switch. All the turn signal lights will flash. To turn them off, press the switch once again. Use in emergency conditions, etc.

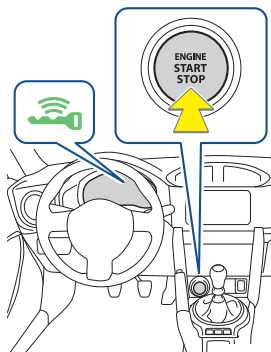
## C Ignition switch (if equipped)



**LOCK** : The steering wheel is locked and the key can be removed. (Vehicles with an automatic transmission: The key can be removed only when the select lever is in **P**.)  
**ACC** : Some electrical components, such as the power outlet, can be used.  
**ON** : All electrical components can be used.  
**START**: For starting the engine.

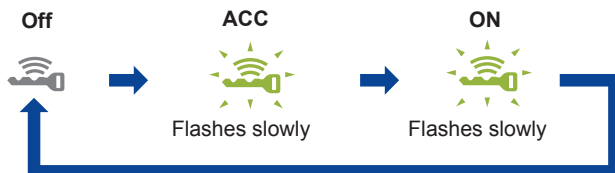
## D Push-button ignition switch (if equipped)

Performing the following operations when carrying the access key on your person starts the engine or changes push-button ignition switch modes.



### ■ Changing push-button ignition switch mode

Modes can be changed by push-button ignition switch with the brake pedal (vehicles with an automatic transmission) or clutch pedal (vehicles with a manual transmission) released. (The mode changes each time the switch is pressed).



### ■ Starting the engine

#### Vehicles with an automatic transmission:

**STEP1:** Check that the parking brake is set.

**STEP2:** Check that the select lever is set to **P**.

**STEP3:** Firmly depress the brake pedal.

The push button start system indicator light (green) will turn on.

**STEP4:** Press the push-button ignition switch.

#### Vehicles with a manual transmission:

**STEP1:** Check that the parking brake is set.

**STEP2:** Check that the shift lever is set to neutral.

**STEP3:** Firmly depress the clutch pedal.

The push button start system indicator light (green) will turn on.

**STEP4:** Press the push-button ignition switch.

### ■ Stopping the engine

#### Vehicles with an automatic transmission:

**STEP1:** Stop the vehicle.

**STEP2:** Shift the select lever to **P**.

**STEP3:** Set the parking brake.

**STEP4:** Release the brake pedal.

**STEP5:** Press the push-button ignition switch.

**STEP6:** Check that the keyless access with push-button start system indicator light (green) is off.

#### Vehicles with a manual transmission:

**STEP1:** While depressing the clutch pedal, stop the vehicle.

**STEP2:** Shift the shift lever to neutral.

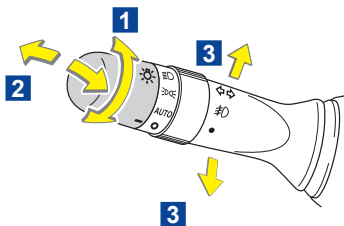
**STEP3:** Set the parking brake.

**STEP4:** Release the clutch pedal.

**STEP5:** Press the push-button ignition switch.



**STEP6:** Check that the keyless access with push-button start system indicator light (green) is off.

## E Headlights/turn signal




### 1 Headlights

To turn on, rotate knob to:

-  : The side marker, parking, tail, license plate, daytime running lights and instrument panel lights.
-  : The headlights and all the lights listed above (except daytime running lights).

**AUTO:** The headlights, parking, daytime running lights and so on turn on and off automatically.

-  : Off (The daytime running lights turn on.)

### 2 High/low beam change

To change to high beam, push lever forward.

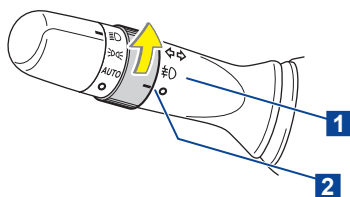
To return, pull back to detent.


To flash high beams, pull lever toward you and release.

### 3 Turn signal

Move lever up or down.

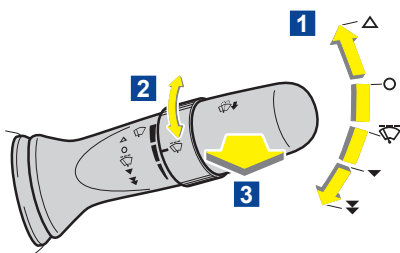
## F Fog lights (if equipped)



1  : ON






2  : OFF

## G Windshield wiper and washer



### 1 Wiper

To operate, push lever down or up to the following positions:

-  : Temporary
-  : Off
-  : Intermittent
-  : Low speed
-  : High speed

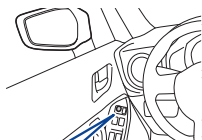
### 2 Intermittent interval

To change interval speed, turn dial.

### 3 Washer/wiper dual operation

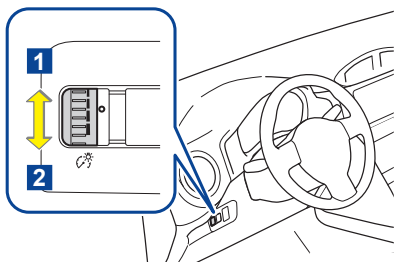
Pull the wiper control lever toward you. The wipers will automatically operate a couple of times after the washer squirts

## H Outside rear view mirror switches



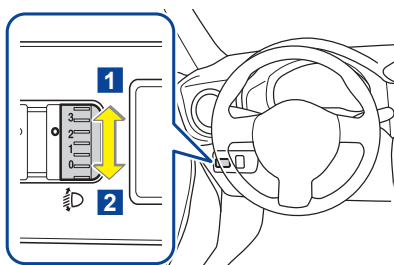
1 Turn the control switch to the side that you want to adjust. **L** is for the left mirror, **R** is for the right mirror.

2 Move the control switch in the direction you want to move the mirror.

**I Instrument panel light control dial**

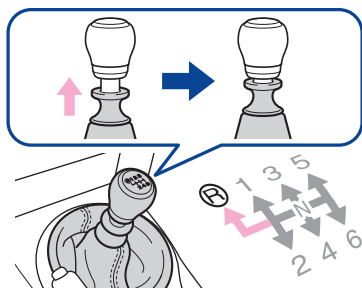
The brightness of the instrument panel lights can be adjusted.

- 1** Brighter
- 2** Darker

**J Manual headlight leveling dial**

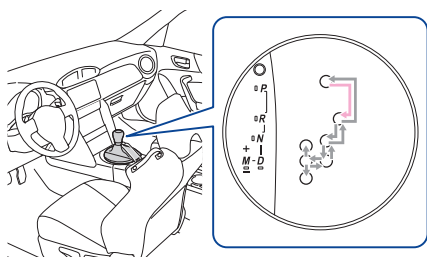
The level of the headlights can be adjusted according to the number of passengers and the loading condition of the vehicle.

- 1** Raise
- 2** Lower

**K Manual transmission 6-speed (if equipped)****Shifting the shift lever to R**

Shift the shift lever to **R** while lifting up the ring section.

## L Automatic transmission (if equipped)



**P = Parking**

**R = Reversing**

**N = Neutral**

**D = Drive**

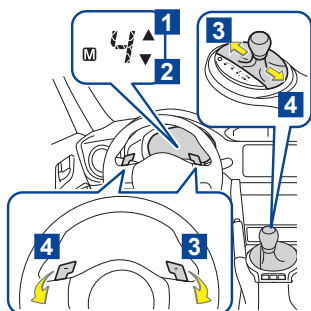
For normal driving/temporary manual mode driving.

**M = Manual mode**

➔ While the engine switch is in the **ON** position, or the push-button ignition switch is in **ON** mode, move the select lever with the brake pedal depressed.

### Manual mode driving:

To enter manual mode, shift the select lever to the **M** position.



Each time the select lever or paddle shift levers are operated, the gear changes up or down one gear and the selected gear, **1** through **6**, will be set. The selected gear, from **1** to **6**, and **M** will be displayed on the shift position and shift range indicator.

**1** Upshift indicator

**2** Downshift indicator

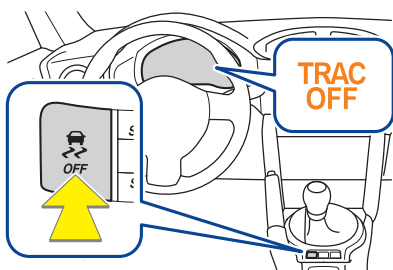
**3** Upshifting (+)

**4** Downshifting (-)

### Temporary manual mode driving (vehicles with paddle shift levers):

Temporary manual mode driving can be changed to by operating the paddle shift levers while the select lever is in the **D** position.

## M TRAC/VSC OFF switch



To turn the Traction Control System off, quickly press and release the button.

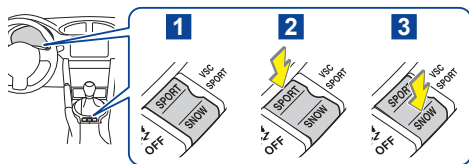
The **TRAC OFF** indicator light will come on.

Press the button again to turn the system back on.

### Turning off both Traction Control System and Vehicle Stability Control (VSC) systems:

To turn the Traction Control System and Vehicle Stability Control systems off, press and hold **TRAC/VSC OFF** switch for more than 3 seconds while the vehicle is stopped. The **TRAC OFF** indicator light and the **VSC OFF** indicator light will come on. In this case, the brake LSD function remains on. Press the button again to turn the systems back on.

## N Driving pattern selector switch (if equipped)



### Selecting a driving mode

By pressing the driving pattern selector switch, the following modes can be selected to suit driving and usage conditions:

#### 1 Normal mode

#### 2 Sport mode

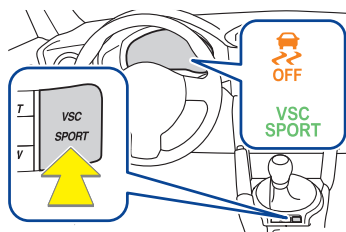
The **SPORT** indicator comes on. Use Sport mode for sporty driving or when driving in mountainous regions with lots of curves.

#### 3 Snow mode

The **SNOW** indicator comes on. Use Snow mode for accelerating and driving on slippery road surfaces such as snow.

To cancel Sport mode or Snow mode, press the same side of the switch again.

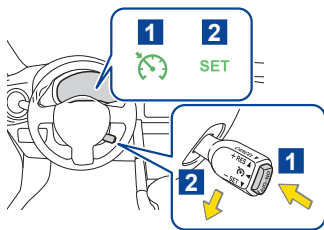
## O VSC SPORT mode switch



When the **VSC SPORT** mode switch is pressed, the **VSC SPORT** mode is activated. Control characteristics such as the vehicle stability control (VSC) and traction control are adjusted to afford maneuverability closer to what a driver may have imagined, while a sense of security is retained.

The **VSC SPORT** indicator and **VSC OFF** indicator come on when in **VSC SPORT** mode.

## P Cruise control switch



### Setting the vehicle speed:

**1** Press the **ON/OFF** button to activate the cruise control. Cruise control indicator (green) will come on. Press the button again to deactivate the cruise control.

**2** Accelerate or decelerate the vehicle to the desired speed, and push the lever down to set the speed.

**SET** indicator will come on. The vehicle speed at the moment the lever is released becomes the set speed.

### Adjusting the set speed:

**3** Increases the speed

**4** Decreases the speed

**Fine adjustment:** By approximately 1km/h (0.6mph) each time the lever is moved momentarily.

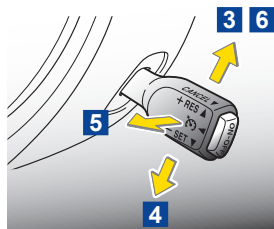
**Large adjustment:** Hold the lever in the desired direction.

The set speed can be increased or decreased continually until the lever is released.

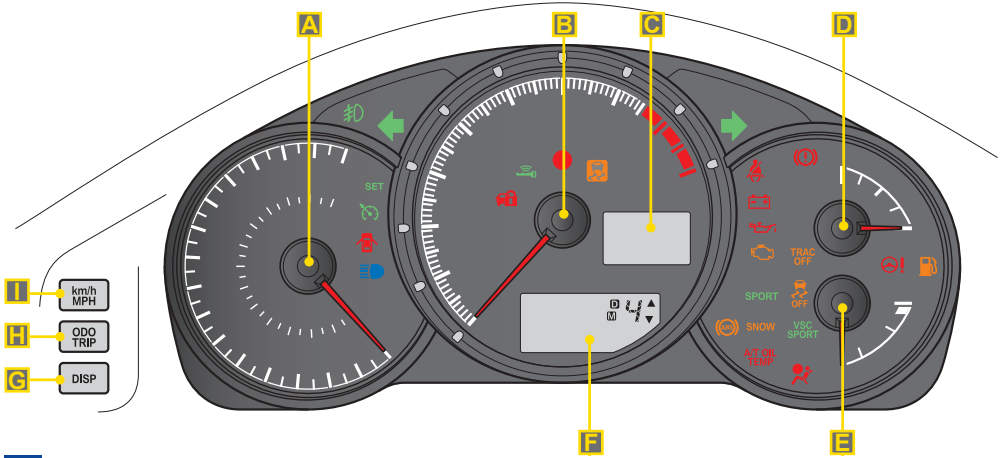
### Canceling and resuming the constant speed control:

**5** Pulling the lever toward you cancels the constant speed control.

**6** Pushing the lever up resumes the constant speed control.



# METERS/INDICATORS



## Gauges and meters

### A Analog speedometer

Displays the vehicle speed.

### B Tachometer

Displays the engine speed in revolutions per minute.

### C Digital speedometer

Displays the vehicle speed.

### D Fuel gauge

Displays the quantity of fuel remaining in the tank.

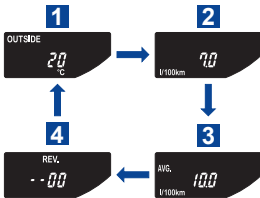
### E Engine coolant temperature gauge

Displays the engine coolant temperature.

### F Odometer, tripmeter and multi-information display

Press the **DISP** switch, **ODO/TRIP** switch or **km/h MPH** switch to display a variety of driving-related data.

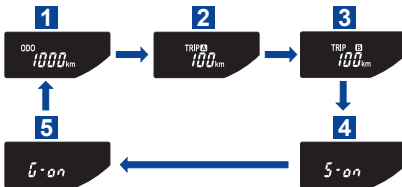
### G DISP switch



Each time the **DISP** switch is pressed, the display changes as follows:

- 1 Outside temperature
- 2 Current fuel consumption
- 3 Average fuel consumption
- 4 Setting screen for the REV indicator

### H ODO/TRIP switch



Each time the **ODO/TRIP** switch is pressed, the display changes as follows:

- 1 Odometer
- 2 Trip meter A
- 3 Trip meter B
- 4 Setting screen for tachometer indicator needle movement function when starting the vehicle.\*
- 5 Setting screen for the shift position indicator and shift-up indicator (MT vehicles only).\*

### I km/h MPH switch

Each time switch is pressed, the display inside the meter changes between km/h and MPH.

\*Key must be in the OFF position.



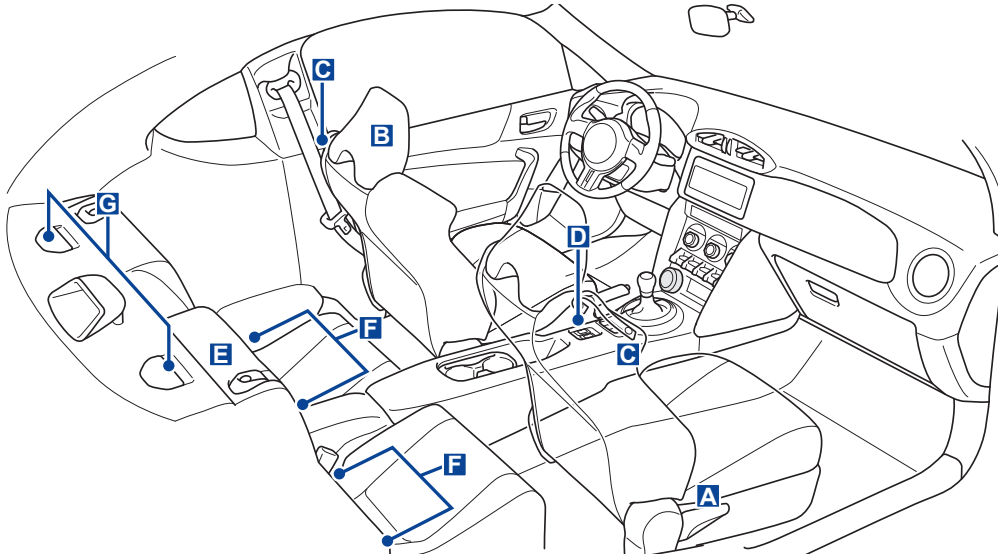
# MAIN WARNING AND INDICATOR LIGHTS

Refer to the Owner's Manual for countermeasures when each warning light comes on. If necessary, consult your authorized Subaru dealer.

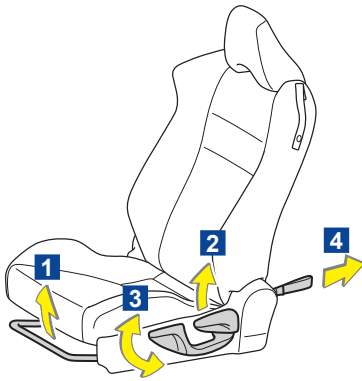
 <p><b>Malfunction indicator</b></p> <p>Indicates a malfunction in:</p> <ul style="list-style-type: none"> <li>• The electronic engine control system</li> <li>• The electronic throttle control system</li> <li>• The electronic automatic transmission control system</li> </ul>	 <p><b>SRS warning</b></p> <p>Indicates a malfunction in:</p> <ul style="list-style-type: none"> <li>• The SRS airbag system</li> <li>• The seatbelt pretensioner system</li> <li>• The occupant detection system</li> </ul>
 <p><b>ABS warning</b></p> <p>Indicates a malfunction in:</p> <ul style="list-style-type: none"> <li>• The ABS</li> <li>• The brake assist system</li> </ul>	 <p><b>Brake system warning</b></p> <ul style="list-style-type: none"> <li>• Low brake fluid</li> <li>• Malfunction in the brake system</li> <li>• The parking brake is not released</li> </ul>
 <p><b>Driver's seatbelt reminder</b></p> <p>Warns the driver to fasten his/her seatbelt.</p>	 <p><b>Charging system warning</b></p> <p>Indicates a malfunction in the vehicle's charging system.</p>
 <p><b>Open door warning</b></p> <p>Indicates that a door or the trunk lid is not fully closed.</p>	 <p><b>Electric power steering warning</b></p> <p>Indicates a malfunction in the electric power steering system.</p>
 <p><b>Low fuel level warning</b></p> <p>Fuel level is low. Refuel the vehicle.</p>	 <p><b>Low engine oil pressure warning</b></p> <p>Indicates that the engine oil pressure is too low.</p>
 <p><b>VSC OFF indicator</b></p> <p>The indicator will come on when the Vehicle Stability Control system is deactivate.</p>	 <p><b>Automatic transmission fluid temperature warning (if equipped)</b></p> <p>Indicates that the automatic transmission fluid temperature is too high.</p>
 <p><b>Slip indicator</b></p> <p><b>Illumination:</b> TRAC/Vehicle Stability Control (VSC) system malfunction. <b>Blinking:</b> TRAC/Vehicle Stability Control (VSC) systems are operating.</p>	 <p><b>Cruise control indicator</b></p> <p><b>Illumination in YELLOW:</b> Cruise control system malfunction. <b>Illumination in GREEN:</b> Cruise control system is activated. Please see the Owner's manual for details.</p>
 <p><b>VSC SPORT indicator</b></p> <p>The indicator will come on when the <b>VSC SPORT</b> mode is activated.</p>	 <p><b>TRAC System OFF indicator</b></p> <p>The indicator will come on when the Traction Control System is deactivated.</p>
 <p><b>Keyless access with push-button start system indicator (if equipped)</b></p> <p><b>Illumination in YELLOW:</b> Keyless access with push-button start system malfunction. <b>Illumination in GREEN:</b> Keyless access with push-button start system is activated. Please see the Owner's manual for details.</p>	

\*Some warning/indicator lights illuminate for a few seconds in order to check themselves when the ignition switch is turned ON.

# SEAT, SEATBELT



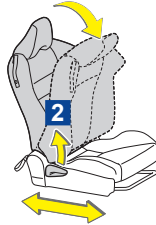
## A Front seat



- 1 Seat position adjustment
- 2 Seatback angle adjustment
- 3 Vertical height adjustment (driver's seat only)
- 4 Seatback fold strap

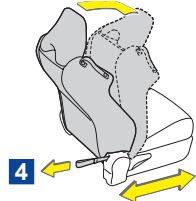
### Getting in the rear seats:

Lift the seatback angle adjustment lever.



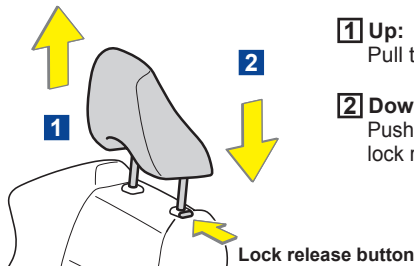
### Getting out the rear seats:

Pull the seatback fold strap.

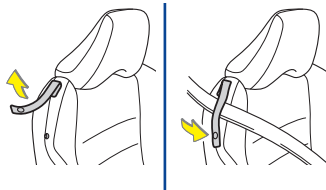


The seat can be slid forward and backward (front passenger seat only).

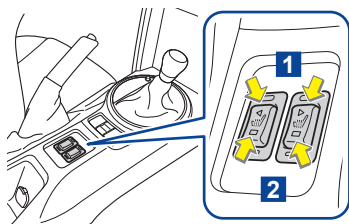
## B Head restraints



- 1 Up:  
Pull the head restraint up.
- 2 Down:  
Push the head restraint down while pushing the lock release button.

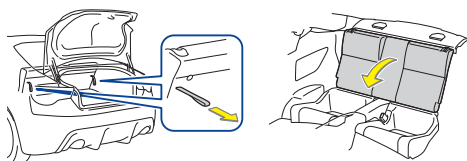
**C Front seatbelt guide**

To enable the seatbelt to be easily extended, pass the seatbelt through the guide.  
When getting in or out of the rear seats, release the seatbelt from the guide.

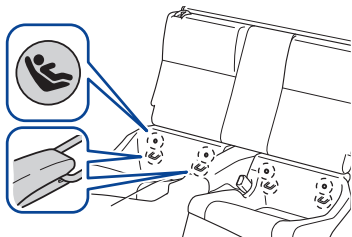
**D Seat heaters (if equipped)**

Press the switch to warm the seats.

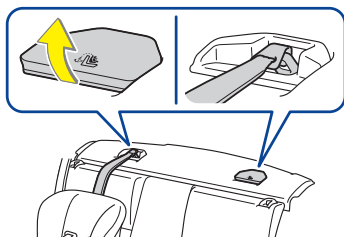
- 1** Rapid heating
- 2** Normal heating

**E Folding down rear seatback**

Pull the seatback lock release straps in the trunk lid to fold down the seatback.

**F Lower anchorages**

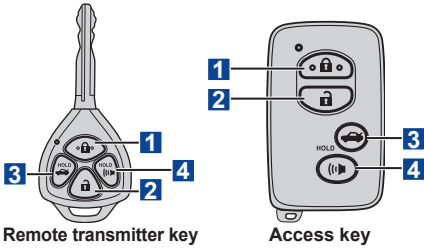
LATCH anchors are provided for both rear seats. (Buttons displaying the location of the anchors are attached to the seats.)  
See the Owner's Manual Chapter 1 for details.

**G Anchor bracket (for top tether strap)**

Anchor brackets are provided for both rear seats.  
See the Owner's Manual Chapter 1 for details.

# DOOR LOCKS AND WINDOWS

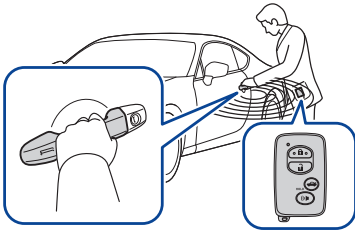
## Remote keyless entry (if equipped)



- 1 Locks both side doors
- 2 Unlocks both side doors
- 3 Unlocks the trunk lid (press and hold)
- 4 Sounds the alarm (press and hold)

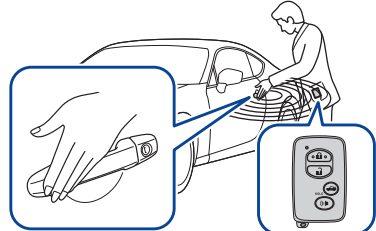
## Keyless access function (if equipped)

### To unlock doors



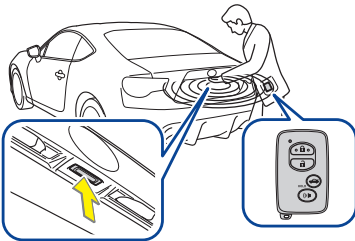
Carry the access key, and grip the driver's door handle to unlock the door.  
Grip the passenger's door handle to unlock all the doors.

### To lock all doors



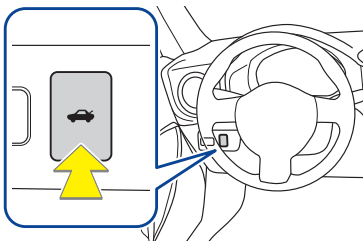
Carry the access key, and touch the lock sensor (the indentation on the side of the door handle) to lock the doors.

### To unlock trunk lid



Carry the access key, and press the button to unlock the trunk lid.

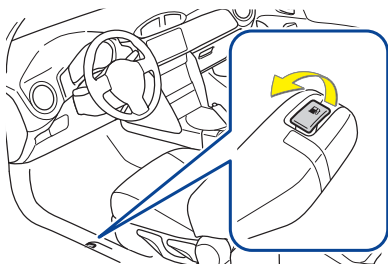
## Trunk lid opener switch



Press and hold the opener switch to release the trunk lid.

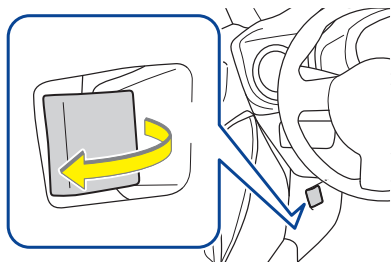
## Fuel filler lid opener

Pull up the opener to open the fuel filler lid.



## Engine hood lock release lever


Pull the engine hood release lever.  
The engine hood will pop up slightly.

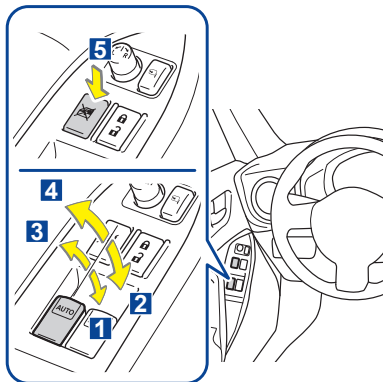


## Power windows

- 1** Opening window
- 2** One-touch opening\*
- 3** Closing window
- 4** One-touch closing\*

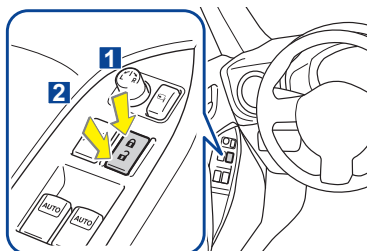
\*Pushing the switch in the opposite direction will stop window travel partway.

- 5** **Lock switch:** Press the  switch down to lock the passenger window glasses.



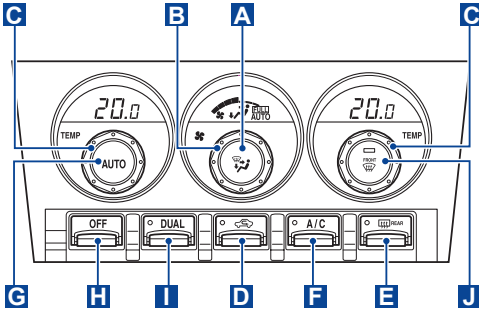
## Power door lock

- 1** Locks both side doors
- 2** Unlocks both side doors



# CLIMATE CONTROL

## Automatic air conditioning system (if equipped)



### A Changes the air outlet used

To select the air outlets, set the air outlet selection button to the desired position.

### B Fan speed control dial

Turn dial to turn on and to select fan speeds. To adjust the fan speed, turn the fan speed control dial clockwise (increase) or counterclockwise (decrease).

### D Outside air or recirculated air mode

Press button to select air flow.

**ON (recirculated air mode):** The indicator light is on.

**OFF (outside air mode):** The indicator light is off.

### F Air conditioning ON/OFF button

Press **A/C** button to select air conditioning ON/OFF.

**ON:** The indicator light is on.

**OFF:** The indicator light is off.

### H Off

Press this button to turn off the climate control system.

### J Windshield defogger

The dehumidification function operates and fan speed increases. Set the outside/recirculated air mode button to outside air mode if the recirculated air mode is used (it may switch automatically).

### C Temperature control dial

To adjust the temperature setting, turn the temperature control dial clockwise (warm) or counterclockwise (cool).

**DUAL mode:** To adjust the temperature control dial on the passenger side to separately adjust the temperature for the passenger and driver sides.

### E Rear window and outside rear view mirror defoggers

Press button to turn on rear window defogger, outside rear view mirror defogger.

The function will automatically turn off after approximately 15 min.

### G Automatic mode

Press the **AUTO** button to operate the dehumidification function. Air outlets, fan speed, air inlet control and the air conditioner compressor are automatically adjusted according to the temperature setting.

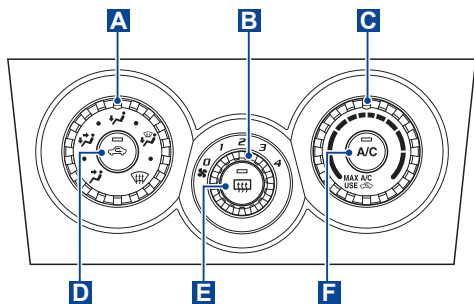
### I Dual operation button

Press this button to separate temperature settings for the driver's side and passenger's side.

### Using Automatic mode:

Fan speed is adjusted automatically according to the temperature setting and the ambient conditions. Therefore, the fan may stop for a while until warm or cool air is ready to flow immediately after the **AUTO** button is pressed.

## Manual air conditioning system (if equipped)



### A Air outlet selection dial

To select the air outlets, set the air outlet selection dial to the desired position.

### B Fan speed control dial

Turn dial to turn on and to select fan speeds. To adjust the fan speed, turn the fan speed control dial clockwise (increase) or counterclockwise (decrease).

### D Outside air or recirculated air mode

Press  button to select air flow.

**ON (recirculated air mode):** The indicator light is on.

**OFF (outside air mode):** The indicator light is off.

### F Air conditioning ON/OFF button

Press **A/C** button to select air conditioning ON/OFF.


**ON:** The indicator light is on.

**OFF:** The indicator light is off.

### C Temperature control dial

To adjust the temperature setting, turn the temperature control dial clockwise (warm) or counterclockwise (cool).

### E Rear window and outside rear view mirror defoggers

Press  button to turn on rear window defogger, outside rear view mirror defogger.

The function will automatically turn off after approximately 15 min.

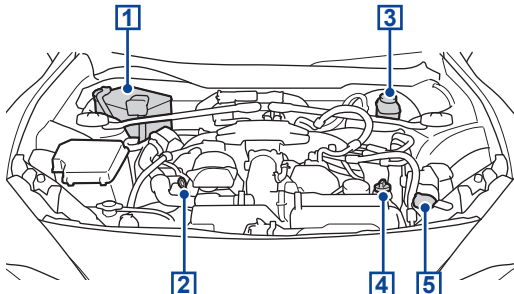
## MAINTENANCE

To keep your vehicle in proper operating condition and to assure peak performance at all times, the recommended maintenance service should be performed in accordance with the maintenance schedule.

Refer to the Owner's Manual for information on maintenance items and intervals.

Also, we recommend that you check your vehicle yourself daily for more comfortable use of your vehicle. When you are going to check your vehicle yourself, please do so in compliance with the Owner's Manual.

### Engine compartment overview



- 1** Battery
- 2** Engine oil level dipstick
- 3** Brake fluid reservoir
- 4** Engine oil filler cap
- 5** Washer fluid tank

subaru.ca

All illustrations, specifications, features and photographs contained in this brochure are based on product information available at the time of its printing, and may not be completely accurate following its publication. Colours shown may vary due to reproduction variations in the printing process, and some vehicle parts cannot be shown in certain photographs. Subaru Canada, Inc. reserves the right to discontinue or make changes at any time, without notice or incurring obligations, to colours, materials, equipment, accessories, features, specifications and models, or to change their prices. Please visit our Web site for the latest information and specifications. For detailed operating and safety information, please consult your Owner's Manual. For complete details on product updates, warranties or the Subaru C.A.R.E. program, please contact your Subaru dealer. BRZ and Subaru are registered trademarks. Printed in Canada. © 2014 Subaru Canada, Inc. 2015 model year.



**Environmental Management System (EMS)**  
ISO 14001:2004 certified by SGS  
[www.subaru-earth.com](http://www.subaru-earth.com)

SUBARU CANADA, INC. / FUJII HEAVY INDUSTRIES LTD.