

GENERAL DESCRIPTION

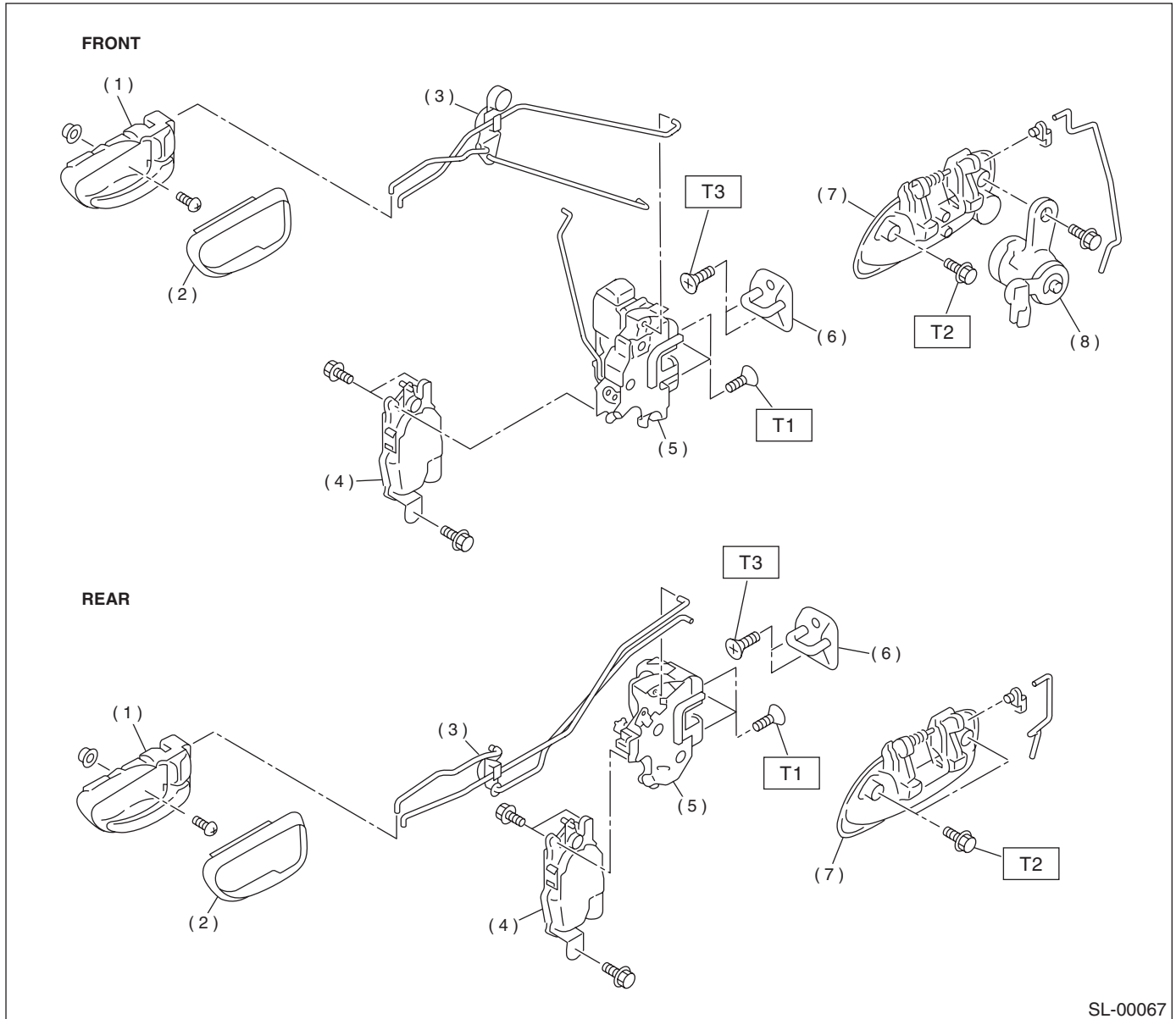
SECURITY AND LOCKS

1. General Description

A: SPECIFICATIONS

B: COMPONENT

1. DOOR LOCK ASSEMBLY



SL-00067

- | | |
|-----------------------------|-----------------------|
| (1) Inner remote ASSY | (6) Striker |
| (2) Inner remote cover | (7) Door outer handle |
| (3) Bell crank | (8) Key cylinder |
| (4) Auto-door lock actuator | |
| (5) Door latch | |

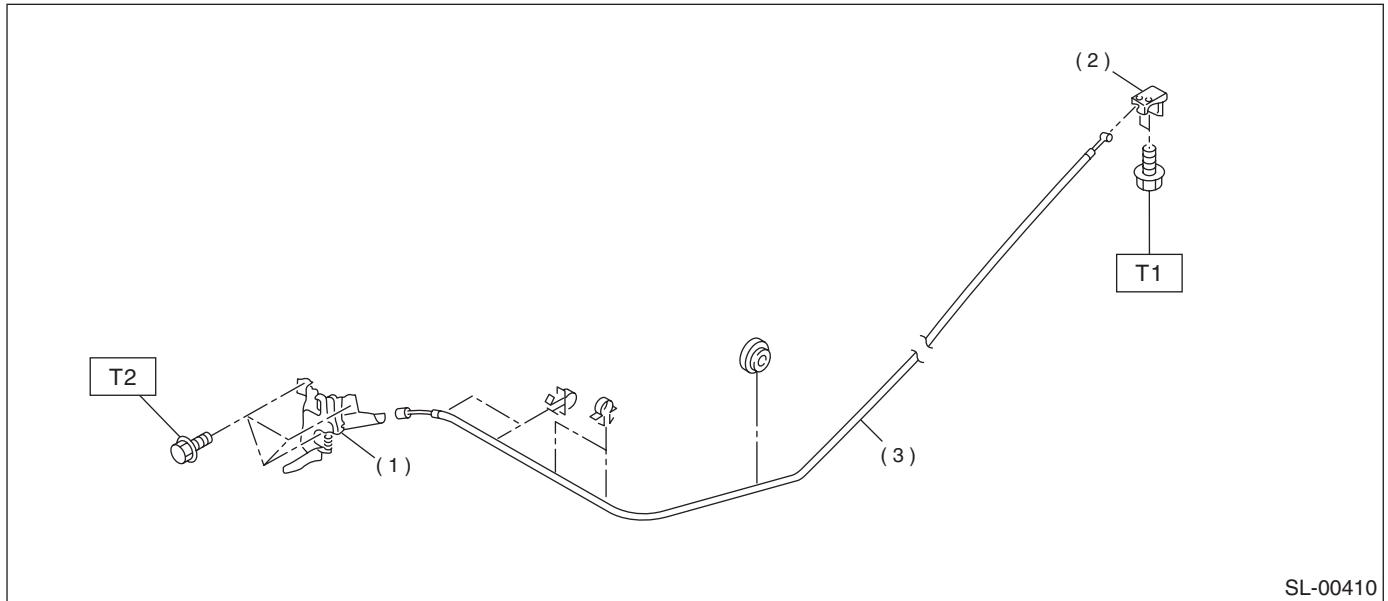
Tightening torque: N·m (kgf·m, ft·lb)

T1: 6.4 (0.65, 4.7)

T2: 7.35 (0.75, 5.4)

T3: 18.0 (1.8, 13.0)

2. HOOD LOCK AND REMOTE OPENERS



- (1) Hood lock ASSY
- (2) Lever ASSY

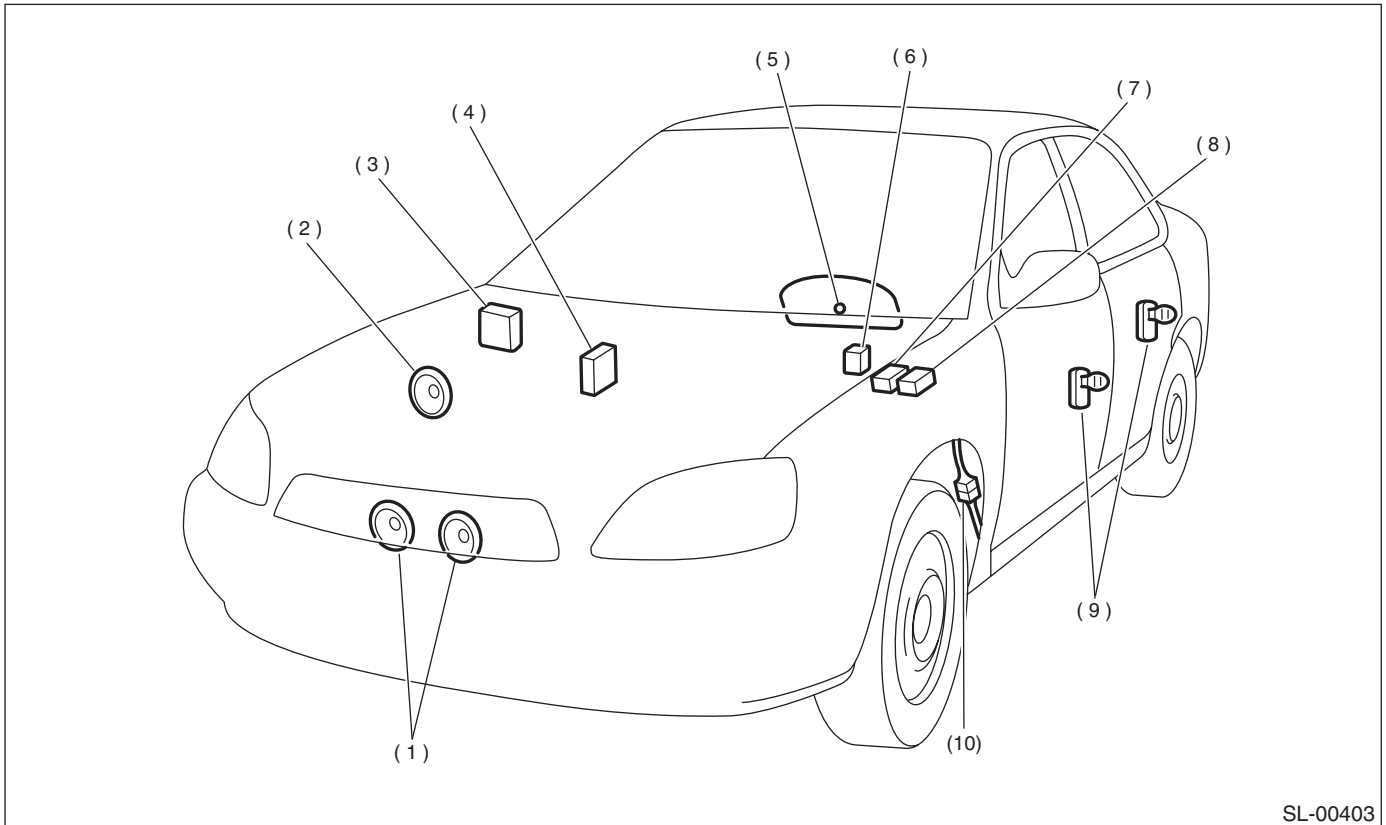
- (3) Cable

Tightening torque: N-m (kgf-m, ft-lb)
T1: 7.5 (0.76, 5.5)
T2: 32 (3.3, 23.9)

GENERAL DESCRIPTION

SECURITY AND LOCKS

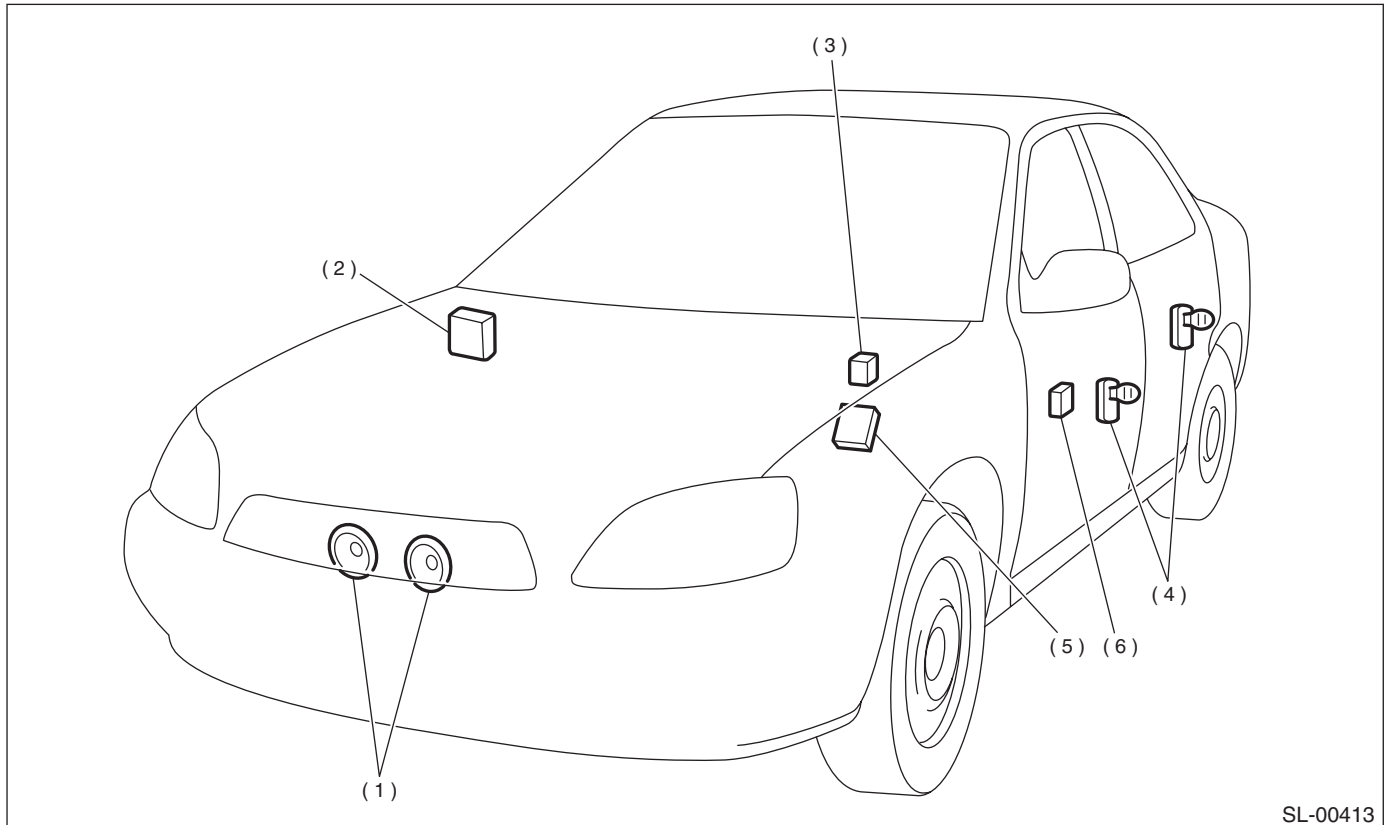
3. SECURITY SYSTEM



SL-00403

- | | | |
|----------------------------------|---|----------------------------|
| (1) Horn | (5) Security indicator light (in combination meter) | (8) Security horn relay |
| (2) Security horn | (6) Horn relay (in main fuse box) | (9) Door switch |
| (3) Keyless entry control module | (7) Interrupt relay | (10) Passive arm connector |
| (4) Security control module | | |

4. KEYLESS ENTRY SYSTEM



SL-00413

(1) Horn

(2) Keyless entry control module

(3) Horn relay

(4) Door switch

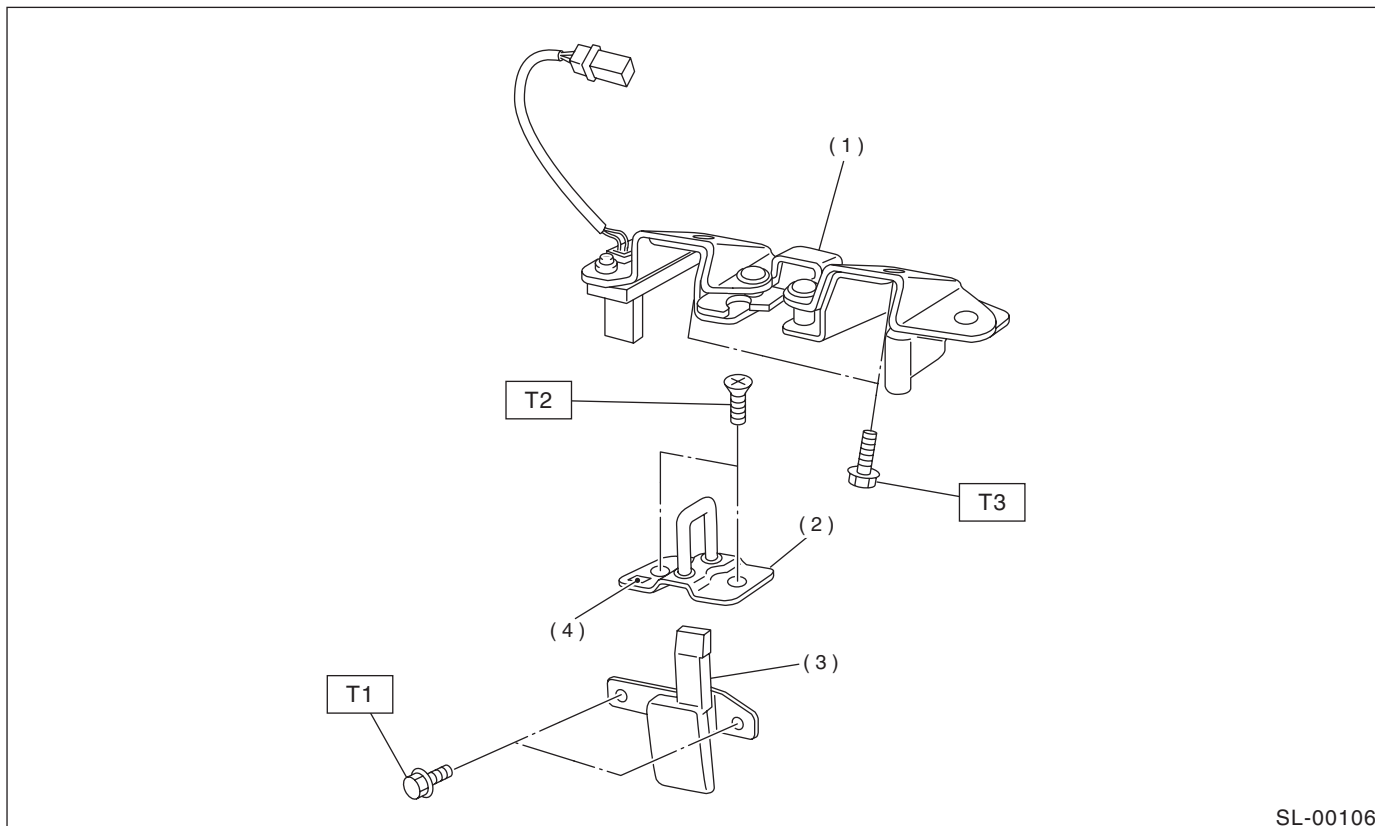
(5) Integrated module

(6) Keyless buzzer

GENERAL DESCRIPTION

SECURITY AND LOCKS

5. SWITCH BACK GATE LOCK



- (1) Switch back gate latch
- (2) Striker

- (3) Switch back gate release handle
- (4) Marking

Tightening torque: N-m (kgf-m, ft-lb)

T1: 7.5 (0.76, 5.5)

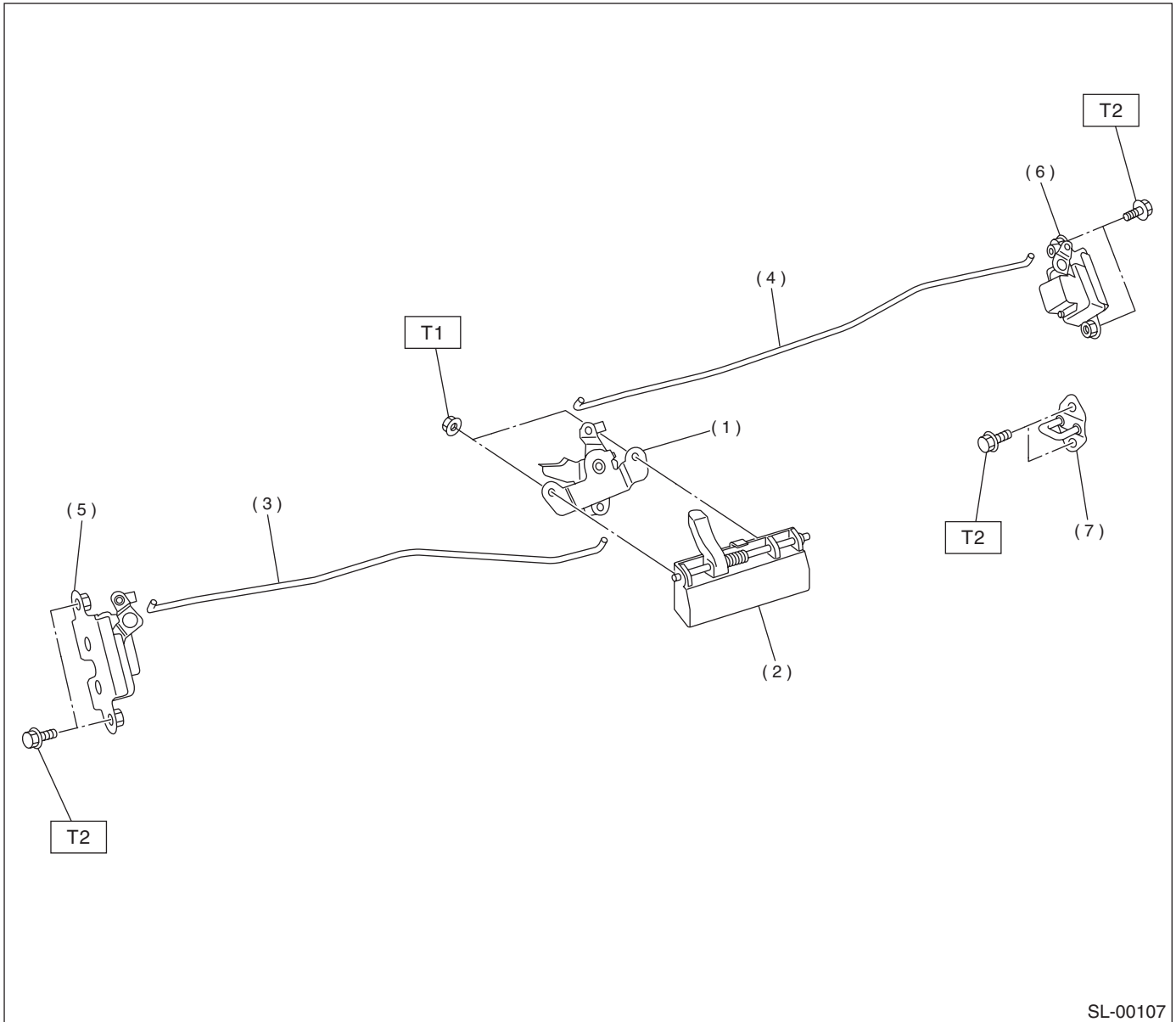
T2: 18 (1.8 13.0)

T3: 27.5 (2.80, 20.3)

NOTE:

When installing striker, mount with marked portion facing the vehicle front.

6. TAIL GATE LOCK



- | | |
|----------------------------|--------------------------|
| (1) Link ASSY | (5) Tail gate latch (LH) |
| (2) Tail gate outer handle | (6) Tail gate latch (RH) |
| (3) Rod (LH) | (7) Striker |
| (4) Rod (RH) | |

Tightening torque: N·m (kgf·m, ft·lb)

T1: 7.5 (0.76, 5.5)

T2: 25 (2.5, 18.1)

GENERAL DESCRIPTION

SECURITY AND LOCKS

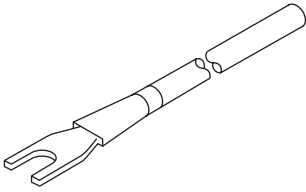
C: CAUTION

- Before disassembling or reassembling parts, always disconnect battery ground cable. When repairing radio, control module, etc. which are provided with memory functions, record memory contents before disconnecting battery ground cable. Otherwise, these contents are cancelled upon disconnection.
- Reassemble parts in reverse order of disassembly procedure unless otherwise indicated.
- Adjust parts to specifications contained in this manual if so designated.

- Connect connectors and hoses securely during reassembly.
- After reassembly, ensure all functional parts operate smoothly.
- Airbag system wiring harness is routed near the electrical parts and switch.
- All airbag system wiring harness and connectors are colored yellow. Do not use electrical test equipment on these circuits.
- Be careful not to damage airbag system wiring harness when servicing the ignition key cylinder.

D: PREPARATION TOOL

1. SPECIAL TOOLS

ILLUSTRATION	TOOL NUMBER	DESCRIPTION	REMARKS
 ST-925580000	925580000	PULLER	Used for removing trim clip.

2. GENERAL TOOLS

TOOL NAME	REMARKS
Circuit Tester	Used for measuring resistance and voltage.
Drill	Used for replacing ignition key lock.