

# SPEED CONTROL SYSTEMS

# *SP(H4DOTC)*

---

	<b>Page</b>
1. General Description .....	2
2. Accelerator Pedal.....	3



# GENERAL DESCRIPTION

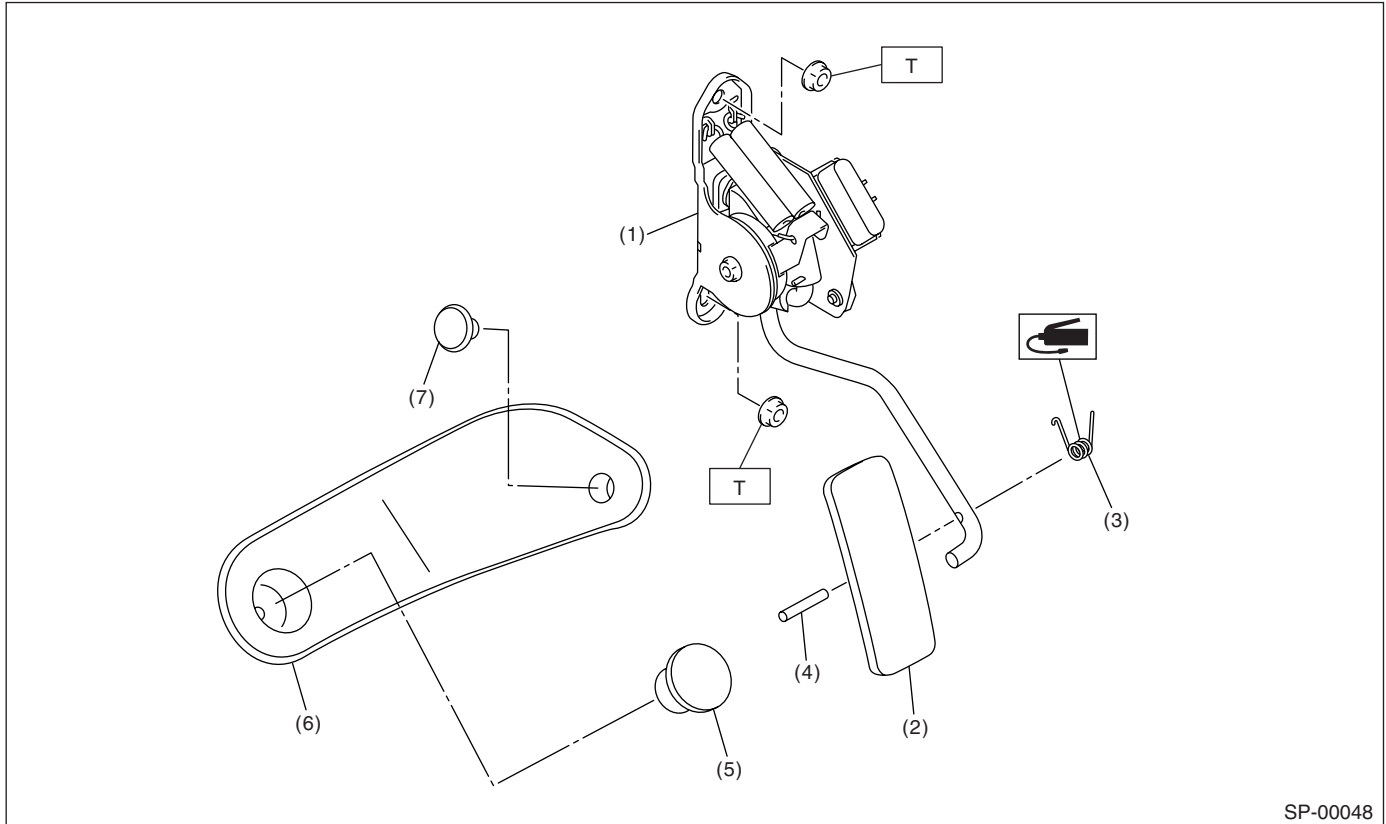
## SPEED CONTROL SYSTEMS

### 1. General Description

#### A: SPECIFICATION

Accelerator pedal	Stroke	At pedal pad	50 — 55 mm (1.97 — 2.17 in)
-------------------	--------	--------------	-----------------------------

#### B: COMPONENT



SP-00048

- |                              |                         |
|------------------------------|-------------------------|
| (1) Accelerator pedal ASSY   | (5) Accelerator stopper |
| (2) Accelerator pedal        | (6) Accelerator plate   |
| (3) Accelerator pedal spring | (7) Clip                |
| (4) Spring pin               |                         |

**Tightening torque: N·m (kgf·m, ft·lb)**  
**T: 18 (1.8, 13.0)**

#### C: CAUTION

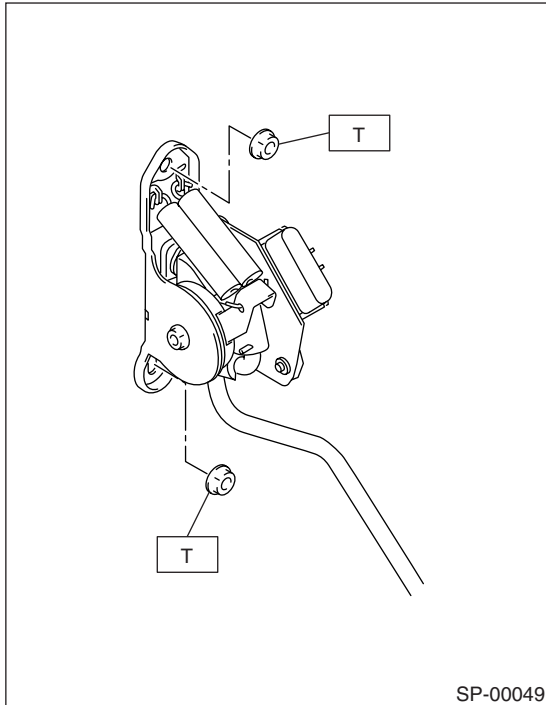
- Wear work clothing, including a cap, protective goggles, and protective shoes during operation.
- Remove contamination, including dirt and corrosion, before removal, installation or disassembly.
- Keep the disassembled parts in order and protect them from dust and dirt.
- Before removal, installation or disassembly, be sure to clarify the failure. Avoid unnecessary removal, installation, disassembly, and replacement.
- Be careful not to burn your hands, because each part in the vehicle is hot after running.
- Be sure to tighten fasteners including bolts and nuts to the specified torque.
- Place shop jacks or safety stands at the specified points.

- Before disconnecting electrical connectors of sensors or units, be sure to disconnect the ground cable from battery.

## 2. Accelerator Pedal

### A: REMOVAL

- 1) Disconnect ground cable from battery.
- 2) Disconnect the connector.
- 3) Remove the nuts which securing accelerator pedal assembly.



### B: INSTALLATION

Install in the reverse order of removal.

#### *Tightening torque:*

**18 N·m (1.8 kgf·m, 13.0 ft·lb)**

### C: DISASSEMBLY

#### NOTE:

Accelerator pedal for model with electronic throttle control system cannot be disassembled.

# ACCELERATOR PEDAL

SPEED CONTROL SYSTEMS

---

**MEMO:**