

IDENTIFICATION

ID

	Page
1. Identification	2

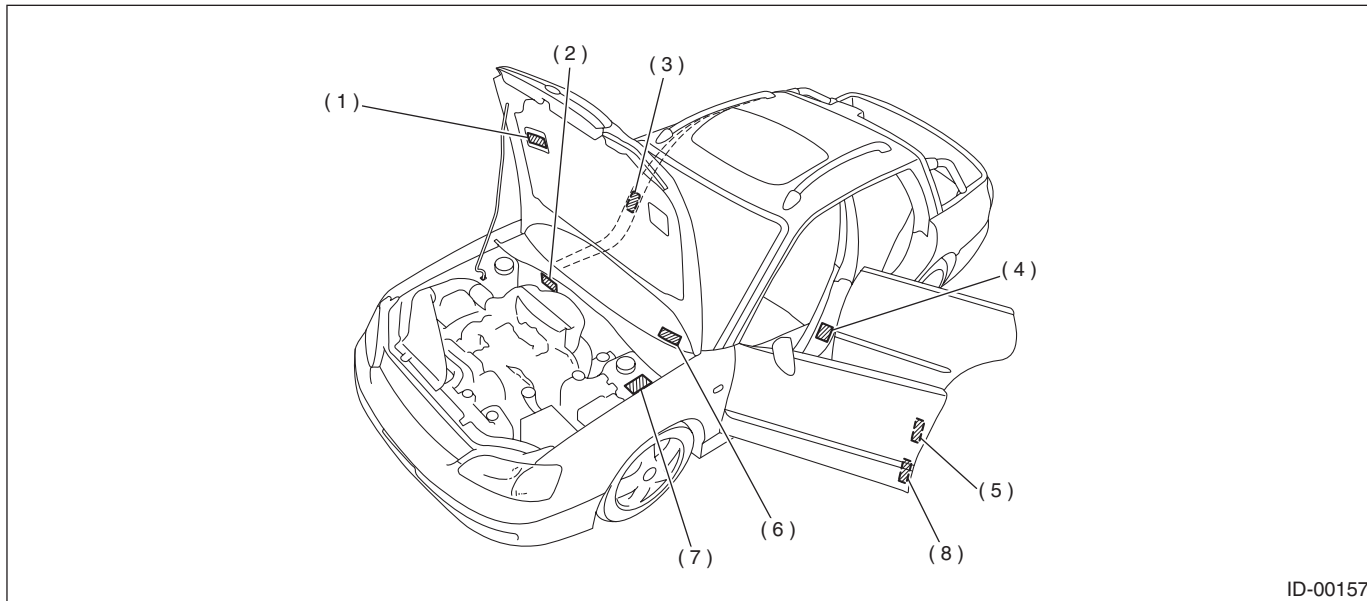


1. Identification

A: IDENTIFICATION

1. IDENTIFICATION NUMBER AND LABEL LOCATIONS

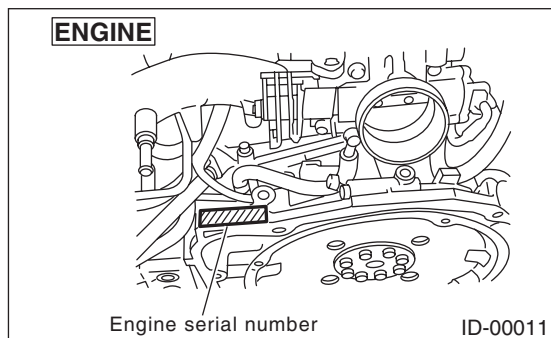
The VIN (Vehicle Identification Numbers) is used to classify the vehicle.
Positioning of the plate label for identification



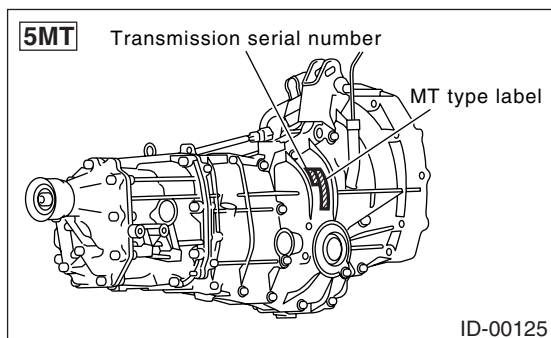
ID-00157

- | | | |
|--|---|--|
| (1) Emission control and vacuum hose label | (4) Tire inflation pressure label | (7) Model number plate (Vehicles produced before August 2005) |
| (2) Vehicle identification number | (5) FMVSS label (USA model)
CMVSS label (Canada model) | (8) Model number label (Vehicles produced after September 2005)
(Driver's side) |
| (3) Radio noise label (Canada model) | (6) Vehicle identification number plate | |

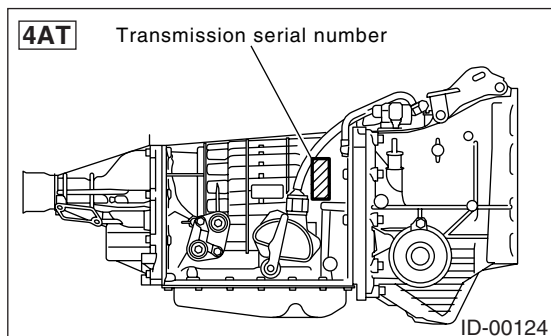
- Engine



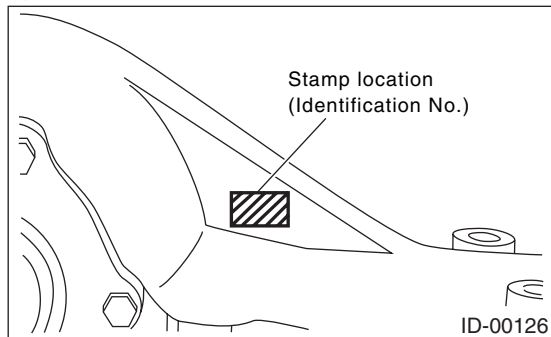
- Manual transmission



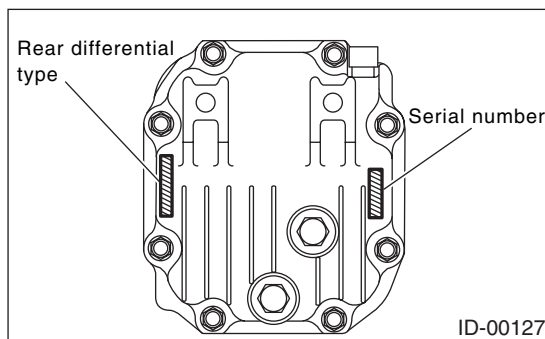
- Automatic transmission



- Rear differential
Except non-TURBO AT models



Non-TURBO AT models



- Model number plate (Vehicles produced before August 2005)

FUJI HEAVY INDUSTRIES LTD.

型式

車台番号 VIN	4S4BT62CX66100001	
◎ アプライドモデル Applied model	BT9GYFJ	オプションコード Option CODE
トリムコード TRIM CODE	D20	エンジン型式 Engine type
外装色コード COLOR CODE	32D	ミッション型式 Transmission type
		EJ251AWFWL
		TY754VCFAA

ID-00163

- Model number label (Vehicles produced after September 2005)

FUJI HEAVY INDUSTRIES LTD.

VIN NTV	4S4BT62CX66100001	
Applied Model Modèle concerné	BT9GYFJ	Option Code Code d'option
Engine Type Modèle de moteur	EJ251AWFWL	Transmission Type Modèle de boîtes vitesse
		TY754VCFAA
		Trim Code Code de garniture
		D20
		Color Code Code de couleur
		32D

ID-00164

IDENTIFICATION

IDENTIFICATION

2. MEANING OF VIN

The meaning of the VIN is as follows:

- PICKUP

J4S4BT62CX66100001[

The starting and ending brackets ([]) are stop marks.

Digits	Code	Meaning	Details
1 to 3	4S4	Manufacturer body area	MPV, SIA made, For US/Canada
4	B	Car line	Legacy series
5	T	Body type	T: PICKUP
6	6	Displacement	6: 2.5 L AWD
7	2	Grade	2: BAJA-S 3: BAJA-B
8	C	GVWR class	C: Class C (4,001 — 5,000 lb)
9	X	Check digit	0 — 9 and X
10	6	Model year	6: 2006MY
11	6	Transmission type	5: Full-time AWD 4-speed AT-SS 6: Full-time AWD 5-speed MT 7: Full-time AWD 4-speed AT
12 to 17	100001	Manufacture number	From 100001: PICKUP

3. MODEL NUMBER PLATE

The model number plate indicates: the applied model, the option code, the trim code, the engine type, the transmission type, and the exterior color code. This information is helpful when placing orders for parts.

BT9GYFJ

Digits	Code	Meaning	Details
1	B	Series	B: Legacy/OUTBACK
2	T	Body style	T: PICKUP
3	9	Engine displacement Drive system Suspension system	9: 2.5 L AWD
4	G	Model year	G: 2006MY (SIA made)
5	Y	Destination	Y: Left-hand drive for United States, Canada and Taiwan
6	F	Grade	F: BAJA S U: BAJA B
7	J	Transmission, fuel feed system	D: DOHC MPI Turbo MT center differential AWD J: SOHC MPI MT center differential AWD R: SOHC MPI 4-speed AT T: DOHC MPI Turbo 4-speed AT-SS

The engine and transmission type are as follows:

• Engine

EJ251AWFWL

Digits	Code	Meaning	Details
1 and 2	EJ	Engine type	EJ: 4 cylinders
3 and 4	25	Displacement	25: 2.5 L
5	1	Fuel feed system	1: D-MPI SOHC-A phase-2 or -3 5: MPI-Turbo phase-2 or -3
6	A	Exhaust regulations	A: For states not using California emissions standards B: For USA
7	W	Transmission	W: AWD MT X: AWD AT
8 to 10	FWL	Detailed specifications	Used when ordering parts. See the parts catalog for details.

• Transmission

TY754VCFAA

Digits	Code	Meaning	Details
1	T	Transmission	T: Transmission
2	Y	Transmission type	Y: Full-time AWD MT center differential V: Full-time AWD AT VTD Z: Full-time AWD AT MPT
3 and 4	75	Classification	75: MT 1A, 1B: AT
5	4	Series	4: 5th Generation Legacy
6	V	Transmission specifications	V: Full-time AWD 5-speed MT with viscous coupling center differential single range Z: Full-time AWD 4-speed AT with MPT M: Full-time AWD 4-speed AT with VTD (Direct control)
7	C	Mounted body	C: US 2.5 L SOHC B, W: US 2.5 L Turbo DOHC
8 to 10	FAA	Detailed specifications	Used when ordering parts. See the parts catalog for details.

IDENTIFICATION

IDENTIFICATION

• Rear differential 1

VA1RFK (XS)

Digits	Code	Meaning	Details
1	V	For AWD	V: AWD
2	A	Type	A: A type
3	1	Hypoid gear diameter	1: 152 dia. 2: 160 dia.
4	R	Installation position	R: Rear
5	F	Reduction gear ratio	E: 4.111 F: 4.444
6	K	Specification differences	K: Viscous LSD

• Rear differential 2

T1

Code	Reduction gear ratio	LSD
J	4.111	Viscous R160
F	4.444	Viscous R160
XS	4.444	Viscous R152