

General Description

ABS

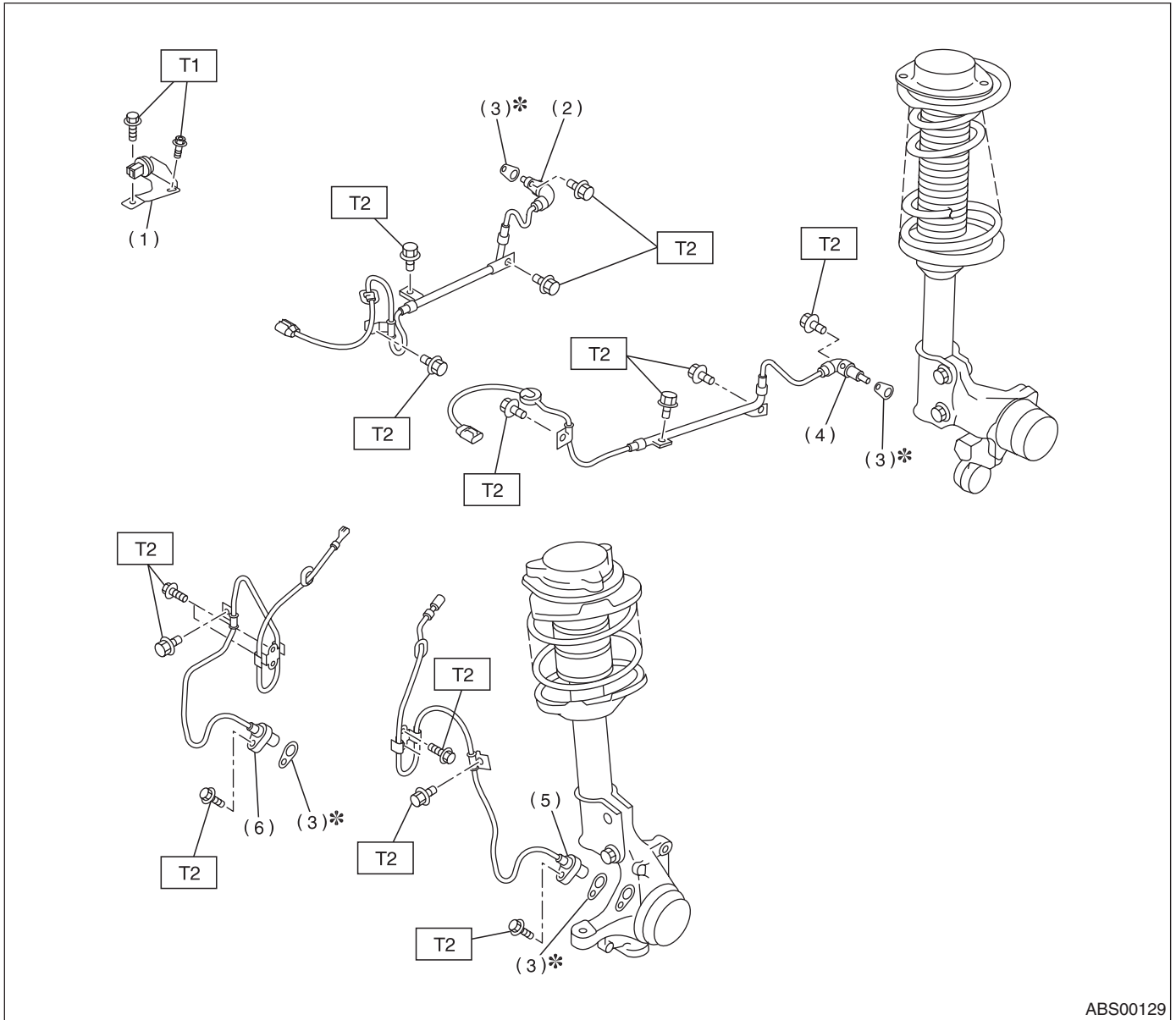
1. General Description

A: SPECIFICATION

Item			Specification	
ABS wheel speed sensor	ABS wheel speed sensor gap	Front	0.3 — 0.8 mm (0.012 — 0.031 in)	
		Rear	0.7 — 1.2 mm (0.028 — 0.047 in)	
	ABS wheel speed sensor resistance	Front	1.25±0.25 kΩ	
		Rear	1.15±0.115 kΩ	
	Identifications of harness (Colors)	Front	RH	Red
			LH	Blue
Rear		RH	White	
		LH	Yellow	
G sensor	G sensor voltage		2.3±0.2 V	
ABSCM & H/U identification		AT	L6	
		MT	L7	

B: COMPONENT

1. SENSOR



ABS00129

- | | |
|------------------------------------|-------------------------------------|
| (1) G sensor | (4) Rear ABS wheel speed sensor LH |
| (2) Rear ABS wheel speed sensor RH | (5) Front ABS wheel speed sensor LH |
| (3) Adjusting spacer | (6) Front ABS wheel speed sensor RH |

Tightening torque: N·m (kgf·m, ft·lb)

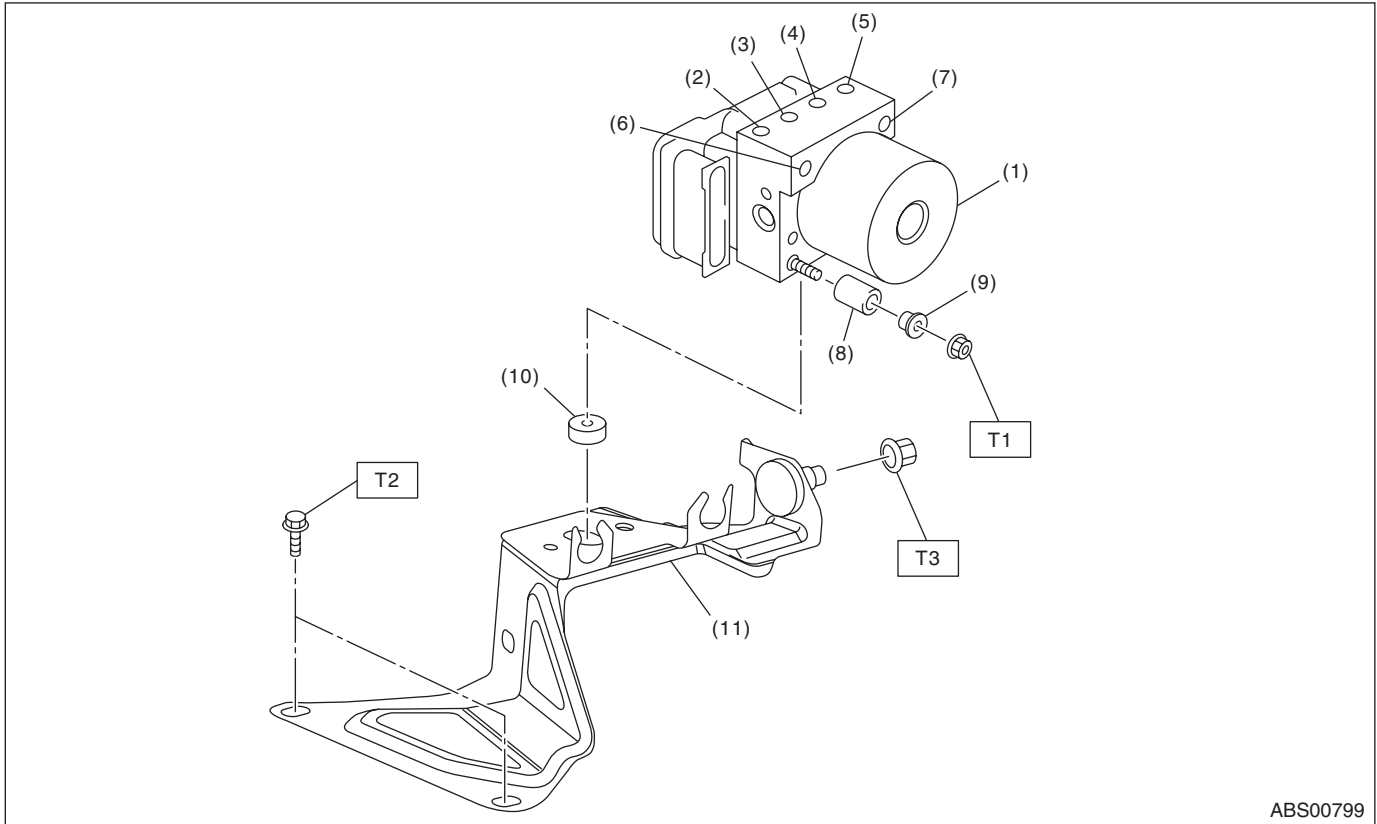
T1: 18 (1.8, 13.0)

T2: 33 (3.4, 24.6)

General Description

ABS

2. ABS CONTROL MODULE AND HYDRAULIC CONTROL UNIT (ABSCM&H/U)



ABS00799

- | | |
|---|---------------------|
| (1) ABS control module and hydraulic control unit (ABSCM&H/U) | (6) Primary inlet |
| (2) Front outlet RH | (7) Secondary inlet |
| (3) Rear outlet LH | (8) Damper |
| (4) Rear outlet RH | (9) Spacer |
| (5) Front outlet LH | (10) Damper |
| | (11) Bracket |

Tightening torque: N·m (kgf·m, ft·lb)

T1: 7.5 (0.76, 5.5)

T2: 33 (3.4, 24.6)

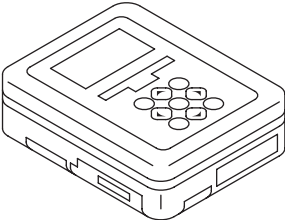
T3: 38 (3.8, 27.5)

C: CAUTION

- Wear appropriate work clothing, including a cap, protective goggles and protective shoes when performing any work.
- Before disconnecting connectors of sensors or units, be sure to disconnect the ground cable from the battery.
- Before removal, installation or disassembly, be sure to clarify the failure. Avoid unnecessary removal, installation, disassembly and replacement.
- Vehicle components are extremely hot after driving. Be wary of receiving burns from heated parts.
- Be sure to tighten fasteners including bolts and nuts to the specified torque.
- Place shop jacks or rigid racks at the specified points.

D: PREPARATION TOOL

1. SPECIAL TOOL

ILLUSTRATION	TOOL NUMBER	DESCRIPTION	REMARKS
 <p style="text-align: center;">ST1B020XU0</p>	1B020XU0	SUBARU SELECT MONITOR KIT	Used for troubleshooting the electrical system. English: 22771AA030 (Without printer)

2. GENERAL TOOL

TOOL NAME	REMARKS
Circuit tester	Used for measuring resistance, voltage and current.
Pressure gauge	Used for measuring oil pressure.
Oscilloscope	Used for measuring the sensor.
TORX® BIT E5	Used for replacing ABSCM.