

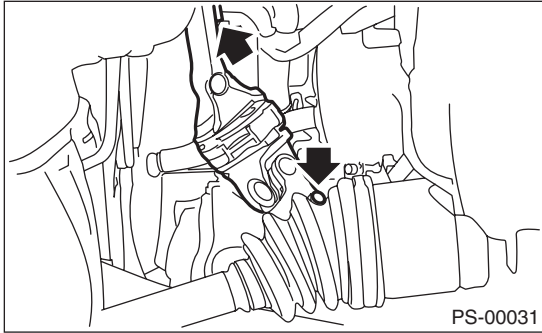
Universal Joint

POWER ASSISTED SYSTEM (POWER STEERING)

3. Universal Joint

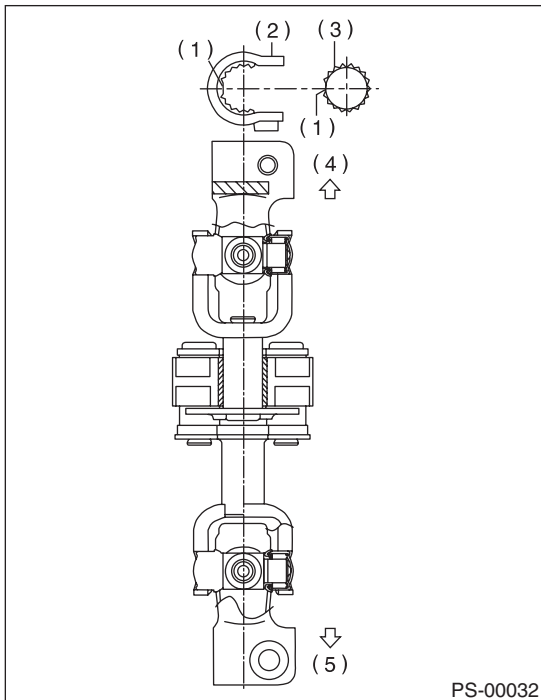
A: REMOVAL

- 1) Remove the steering wheel. <Ref. to PS-13, REMOVAL, Steering Wheel.>
- 2) Place alignment marks on universal joint.
- 3) Remove the universal joint bolt, and then remove the universal joint.



B: INSTALLATION

- 1) Align the cutout portion at the serrated section of the steering shaft and yoke, then insert the universal joint into the steering shaft.



- (1) Cutout portion
- (2) Yoke
- (3) Steering shaft
- (4) Steering shaft side
- (5) Gearbox side

- 2) Match the alignment marks, and insert the universal joint into the serrations of gearbox assembly.
- 3) Tighten the bolt.

Tightening torque:

24 N·m (2.4 kgf-m, 17.4 ft-lb)

CAUTION:

Do not excessively tighten the torque on the universal joint bolts. Overtightening will make the steering wheel heavy.

Standard clearance between gearbox to DOJ:

14 mm (0.55 in) or more

- 4) Align the center position of the roll connector. <Ref. to AB-20, ADJUSTMENT, Roll Connector.>
- 5) Install the steering wheel and airbag module. <Ref. to PS-13, INSTALLATION, Steering Wheel.>

WARNING:

Always refer to "Airbag System" before performing service on the airbag modules. <Ref. to AB-4, CAUTION, General Description.>

C: INSPECTION

Check for wear, damage or any other faults. Replace as necessary.

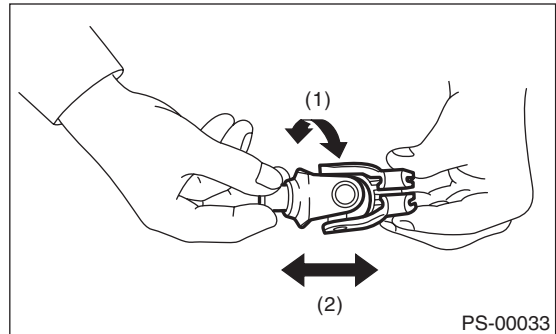
Service limit:

Free play of the universal joint:

0 mm (0 in)

Maximum value of swing torque:

0.3 N (0.03 kgf, 0.07 lb)



- (1) Swing torque
- (2) Play

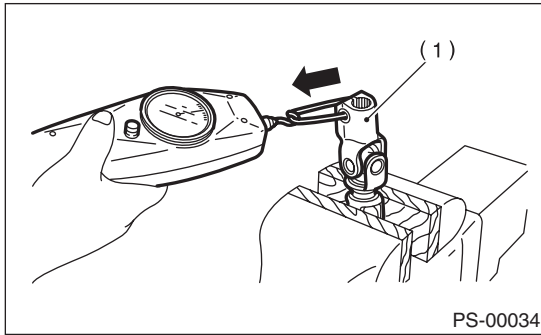
Universal Joint

POWER ASSISTED SYSTEM (POWER STEERING)

Measure the swing torque of universal joint.

Service limit:

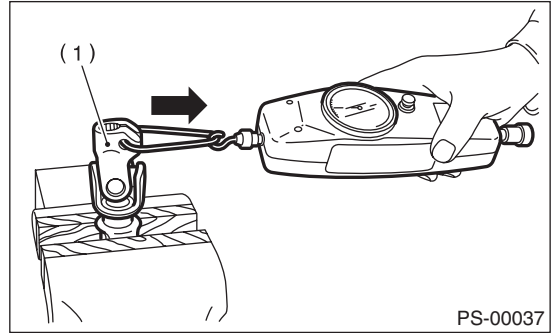
Maximum load:
3.8 N (0.39 kgf, 0.86 lb) or less



(1) Yoke (Gearbox side)

Service limit:

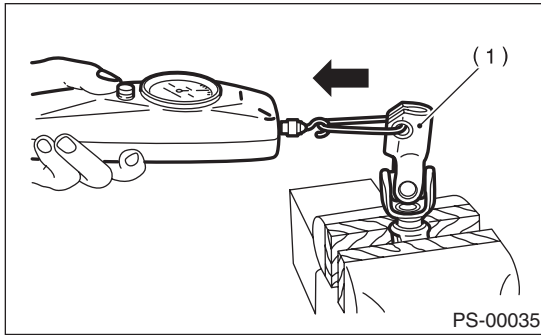
Maximum load:
7.3 N (0.74 kgf, 1.64 lb) or less



(1) Yoke (Steering column side)

Service limit:

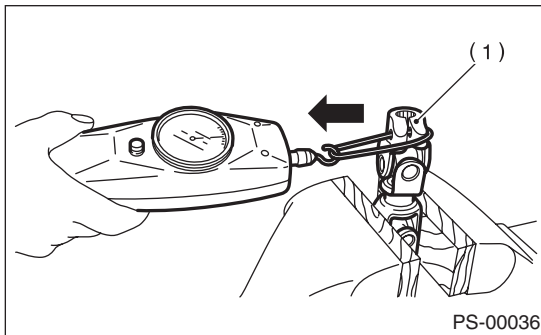
Maximum load:
3.8 N (0.39 kgf, 0.86 lb) or less



(1) Yoke (Gearbox side)

Service limit:

Maximum load:
7.3 N (0.74 kgf, 1.64 lb) or less



(1) Yoke (Steering column side)