

General Description

VEHICLE DYNAMICS CONTROL (VDC)

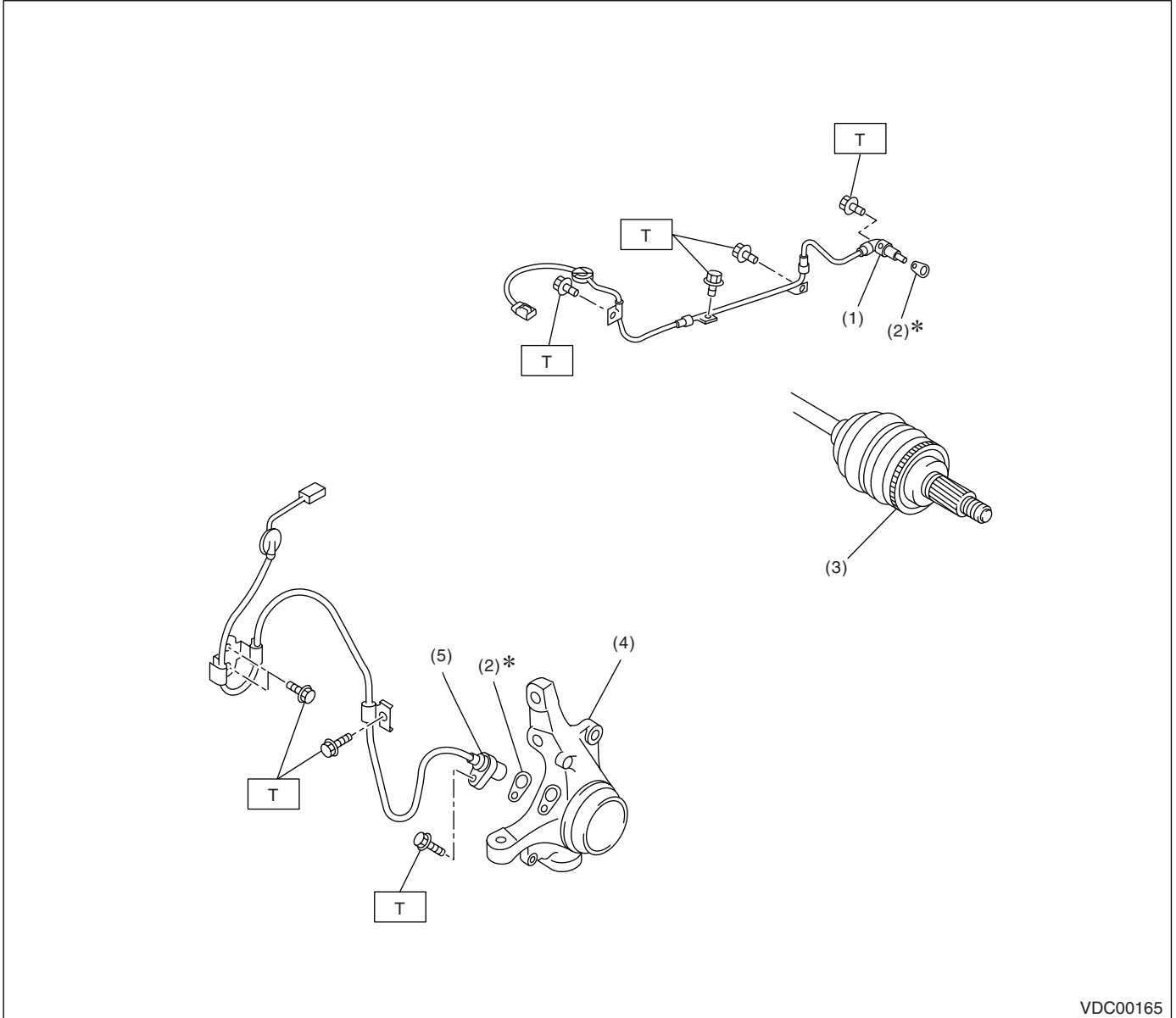
1. General Description

A: SPECIFICATION

Item		Standard value or identification	
ABS wheel speed sensor	ABS wheel speed sensor gap	Front	0.3 — 0.8 mm (0.012 — 0.031 in)
		Rear	0.7 — 1.2 mm (0.0276 — 0.0472 in)
	ABS wheel speed sensor resistance	Front/Rear	1.25±0.25 kΩ/1.15±0.115 kΩ
	Identifications of harness (Colors)	Front LH	Blue
		Front RH	Red
		Rear LH	Yellow
Rear RH		White	
Yaw rate and lateral G sensor	Lateral G sensor voltage	2.5± 0.2 V	
VDCH/M identification		D3	
Identification of VDCCM.		N9	

B: COMPONENT

1. ABS WHEEL SPEED SENSOR



- | | |
|---------------------------------|----------------------------------|
| (1) Rear ABS wheel speed sensor | (4) Housing |
| (2) Adjusting spacer | (5) Front ABS wheel speed sensor |
| (3) Rear tone wheel | |

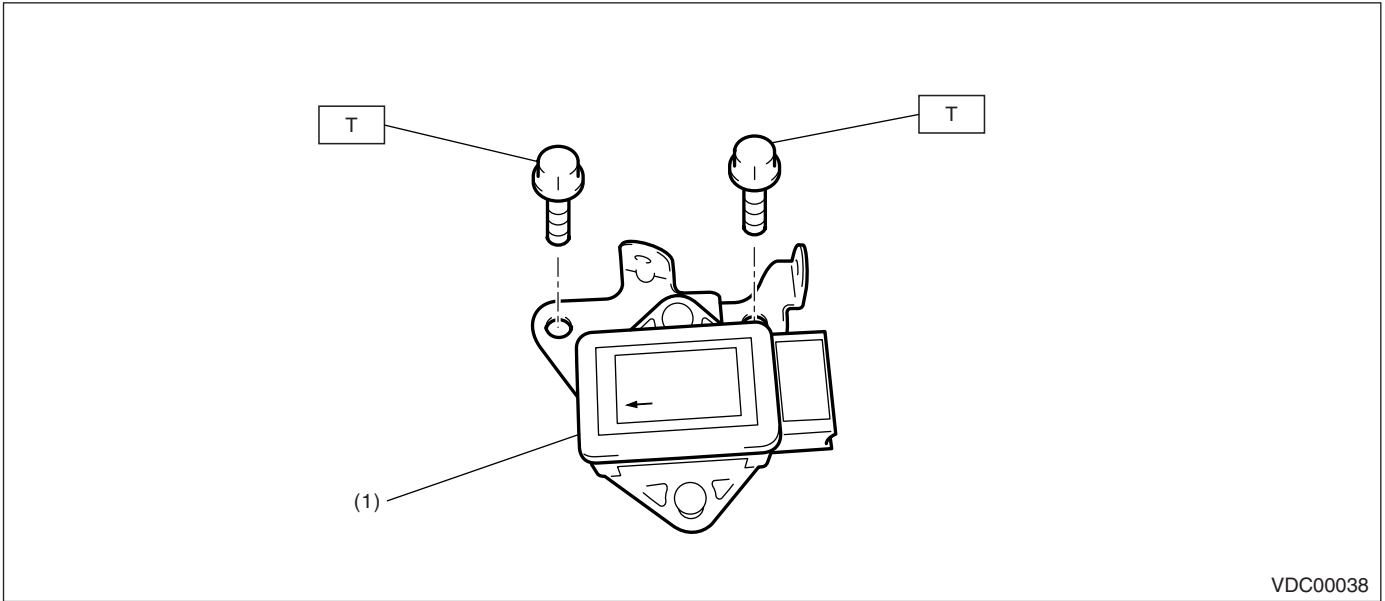
Tightening torque: N·m (kgf·m, ft·lb)

T: 33 (3.3, 23.9)

General Description

VEHICLE DYNAMICS CONTROL (VDC)

2. YAW RATE and LATERAL G SENSOR

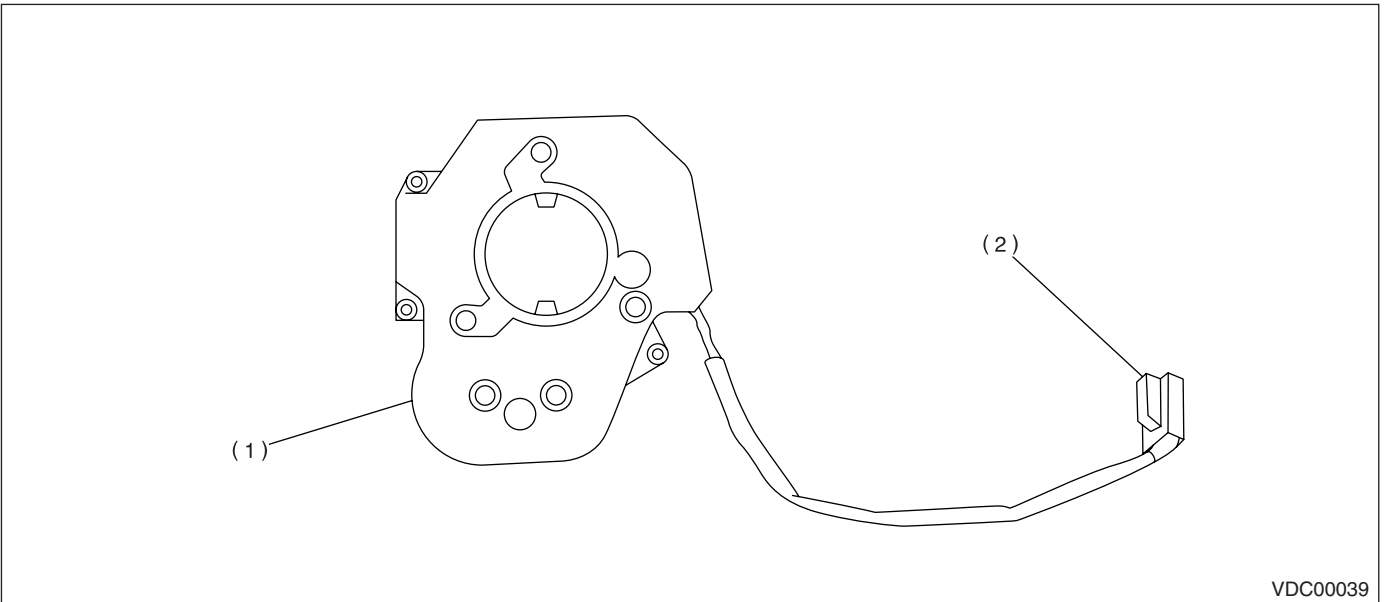


VDC00038

(1) Yaw rate and lateral G sensor

Tightening torque: N·m (kgf·m, ft·lb)
T: 18 (1.8, 13.0)

3. STEERING ANGLE SENSOR

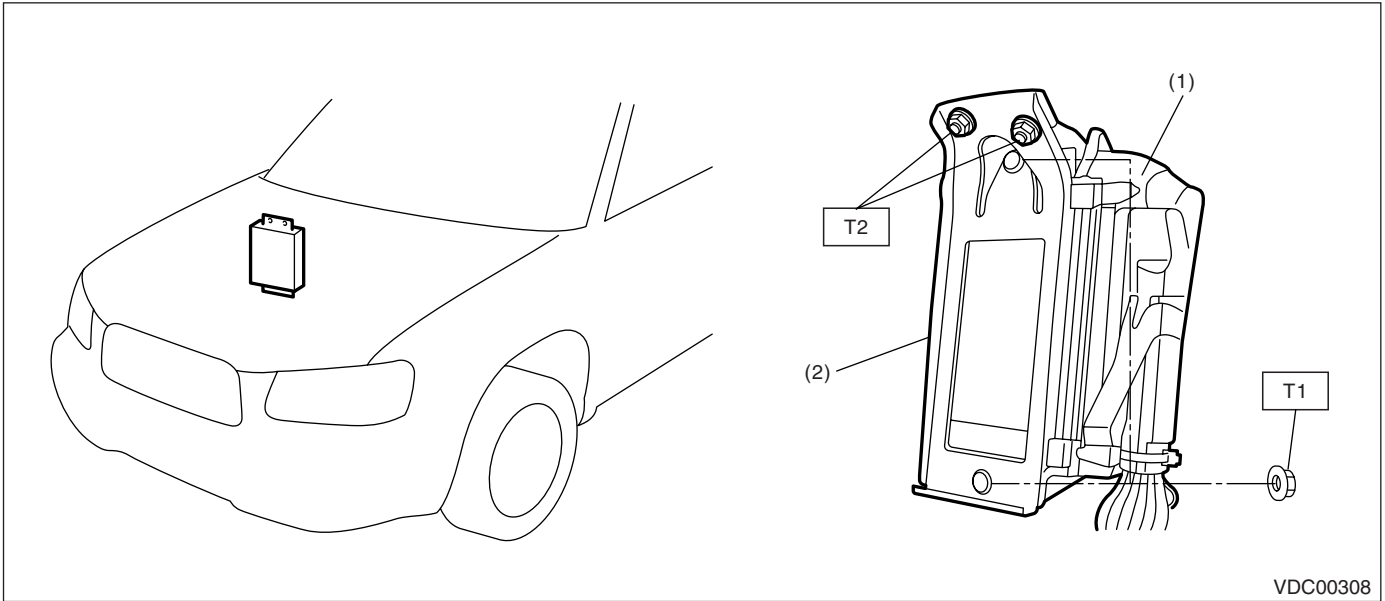


VDC00039

(1) Steering angle sensor

(2) Connector

4. VDC CONTROL MODULE (VDCCM)



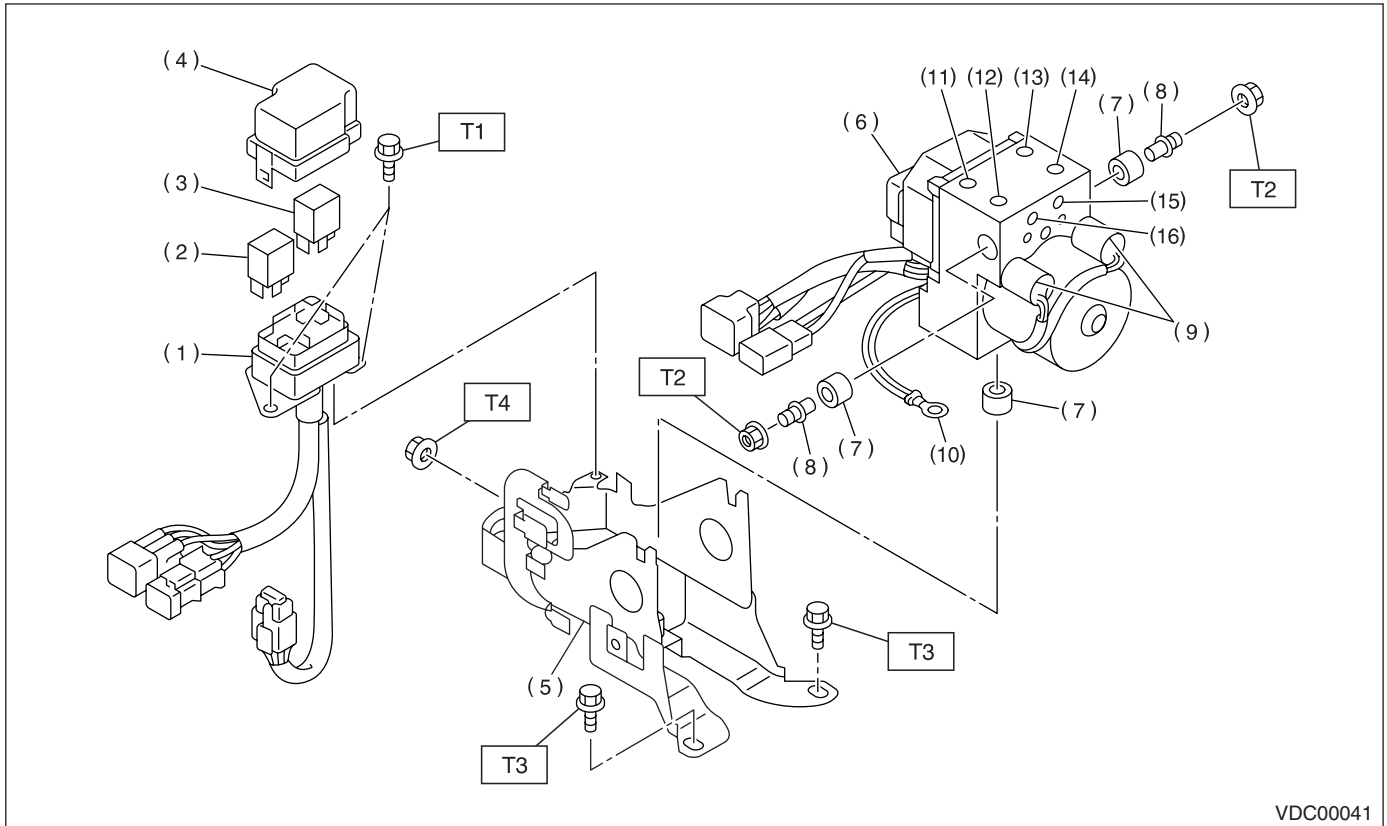
- (1) VDC control module (VDCCM)
- (2) Bracket

Tightening torque: N-m (kgf-m, ft-lb)
T1: 7.5 (0.76, 5.5)
T2: 18 (1.8, 13.0)

General Description

VEHICLE DYNAMICS CONTROL (VDC)

5. VDC HYDRAULIC CONTROL MODULE (VDCH/M)



VDC00041

- | | | |
|---|----------------------|---------------------|
| (1) Relay box | (8) Stud bolt | (16) Rear RH outlet |
| (2) Motor relay | (9) Pressure sensor | |
| (3) Valve relay | (10) Ground terminal | |
| (4) Cap | (11) Front LH outlet | |
| (5) Bracket | (12) Secondary inlet | |
| (6) VDC hydraulic control module (VDCH/M) | (13) Front RH outlet | |
| (7) Damper | (14) Primary inlet | |
| | (15) Rear LH outlet | |

Tightening torque: N·m (kgf·m, ft·lb)

T1: 13 (1.3, 9.4)

T2: 18 (1.8, 13.0)

T3: 33 (3.3, 23.9)

T4: 38 (3.8, 27.5)

CAUTION:

Parts other than the valve relay and motor relay cannot be disassembled.

C: CAUTION

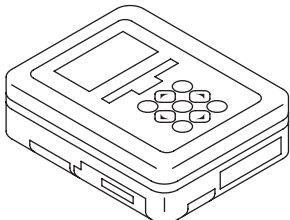
- Wear work clothing, including a cap, protective goggles and protective shoes during operation.
- Remove contamination including dirt and corrosion before removal, installation or disassembly.
- Keep the disassembled parts in order and protect them from dust and dirt.
- Before removal, installation or disassembly, be sure to clarify the failure. Avoid unnecessary removal, installation, disassembly and replacement.
- Be careful not to burn your hands, because each part on the vehicle is hot after running.
- Be sure to tighten fasteners including bolts and nuts to the specified torque.
- Place shop jacks or rigid racks at the specified points.
- Before disconnecting connectors of sensors or units, be sure to disconnect the ground cable from the battery.

General Description

VEHICLE DYNAMICS CONTROL (VDC)

D: PREPARATION TOOL

1. SPECIAL TOOL

ILLUSTRATION	TOOL NUMBER	DESCRIPTION	REMARKS
 ST1B020XU0	1B020XU0	SUBARU SELECT MONITOR KIT	Used for troubleshooting for the electrical system.

2. GENERAL TOOL

TOOL NAME	REMARKS
Circuit tester	Used for measuring resistance, voltage and current.
Pressure gauge	Used for measuring oil pressure.
Oscilloscope	Used for measuring the sensor.
Steering puller	Used for removing the steering wheel.