

Parking Brake Lever

PARKING BRAKE

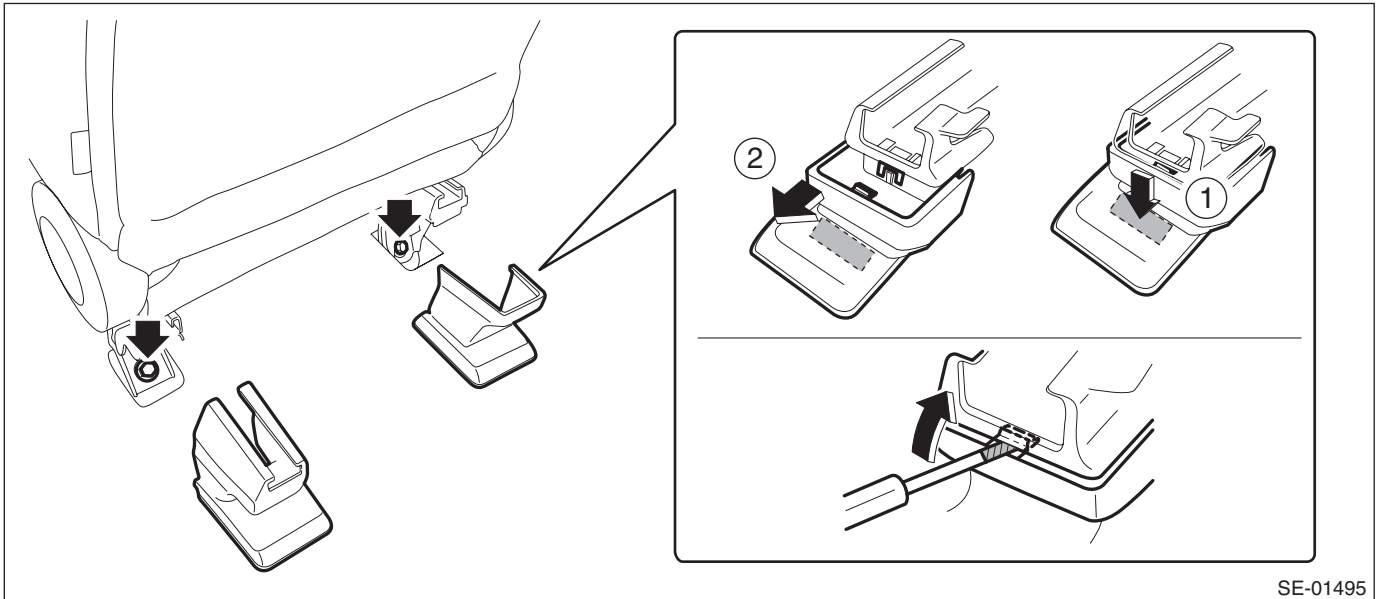
2. Parking Brake Lever

A: REMOVAL

- 1) Set the wheel stoppers to tires.
- 2) Move the passenger's seat towards the front.
- 3) Remove the driver's seat.
 - (1) Tilt the backrest assembly forward and move the front seat to the mid point on the slide rail.
 - (2) Remove the bolts on the front side of the front seat.
 - (3) Remove the cover - bolt rear.
 1. While spreading the tip of the cover - bolt rear OUT side to side, pull it out toward you to remove.
 2. Remove the cover - bolt rear INN.

NOTE:

- Firmly push in the cover - bolt rear INN at the point shown in the figure until a clicking sound is heard and remove it.
- If it is difficult to remove, release the claw using a flat tip screwdriver wrapped with protection tape while pushing the point shown in the figure to remove.
 - (4) Remove the bolts on the rear side of the front seat.



- 4) Disconnect the ground cable from battery and wait for at least 60 seconds before starting work.

CAUTION:

The airbag system is fitted with a backup power supply. After disconnecting the battery ground cable, the airbag may operate if you do not wait for 60 seconds before starting the service of airbag system.

NOTE:

On CVT models, shift the select lever into "N" before disconnecting the battery ground cable.

- 5) Disconnect the connector under the front seat.

CAUTION:

For the power seat, check that the battery ground cable is disconnected. If not, disconnect the battery ground cable and wait for 60 seconds or more.

- Seat belt warning light connector
- Side airbag connector <Ref. to AB-26, SIDE AIRBAG MODULE, PROCEDURE, Airbag Connector.>
- Seat heater connector (model with seat heater)

- 6) Take out the front seat from the vehicle.

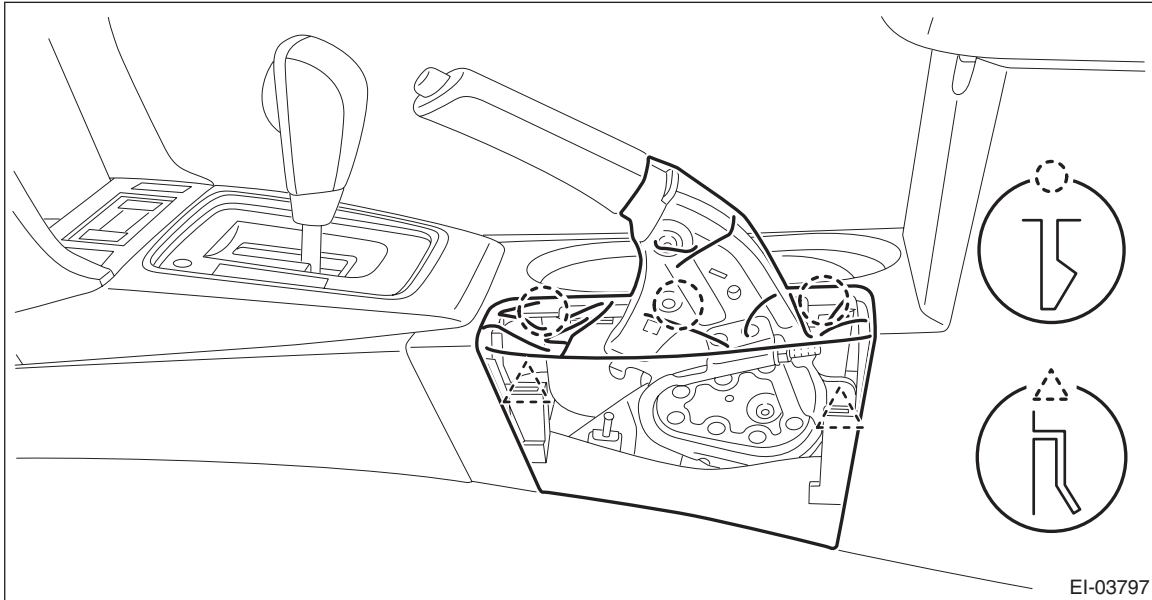
CAUTION:

Be careful not to damage the body.

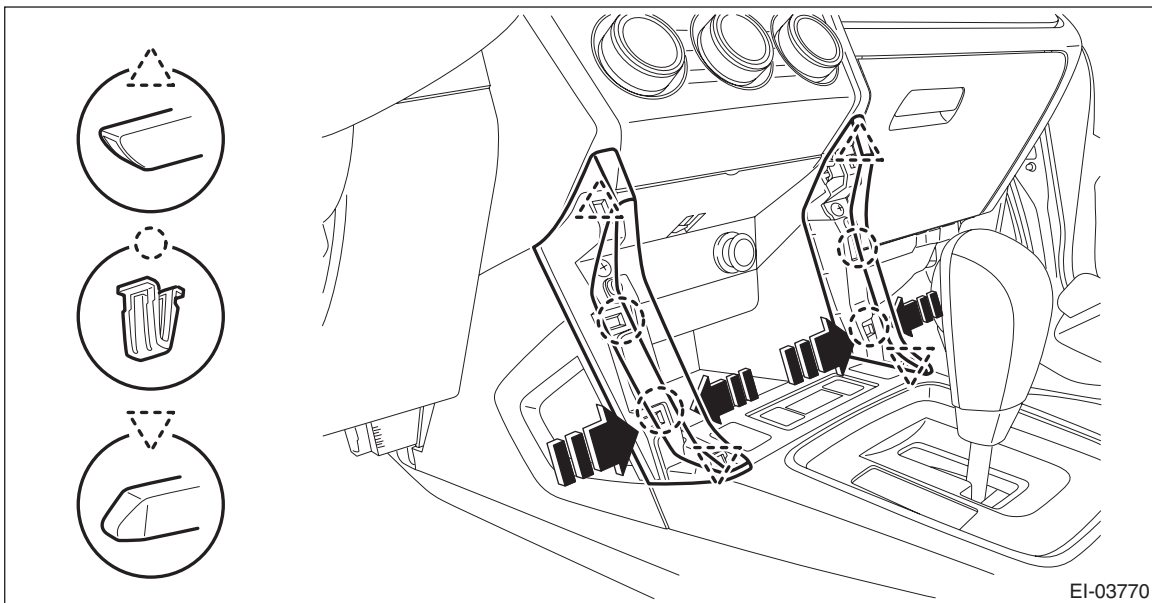
Parking Brake Lever

PARKING BRAKE

7) Release the claws, and then remove the boot - hand brake.



8) Release the clips, and remove the ornament panel - console.



NOTE:

Removal is easier if you grab the arrow sections from right and left and pull them at the same time.

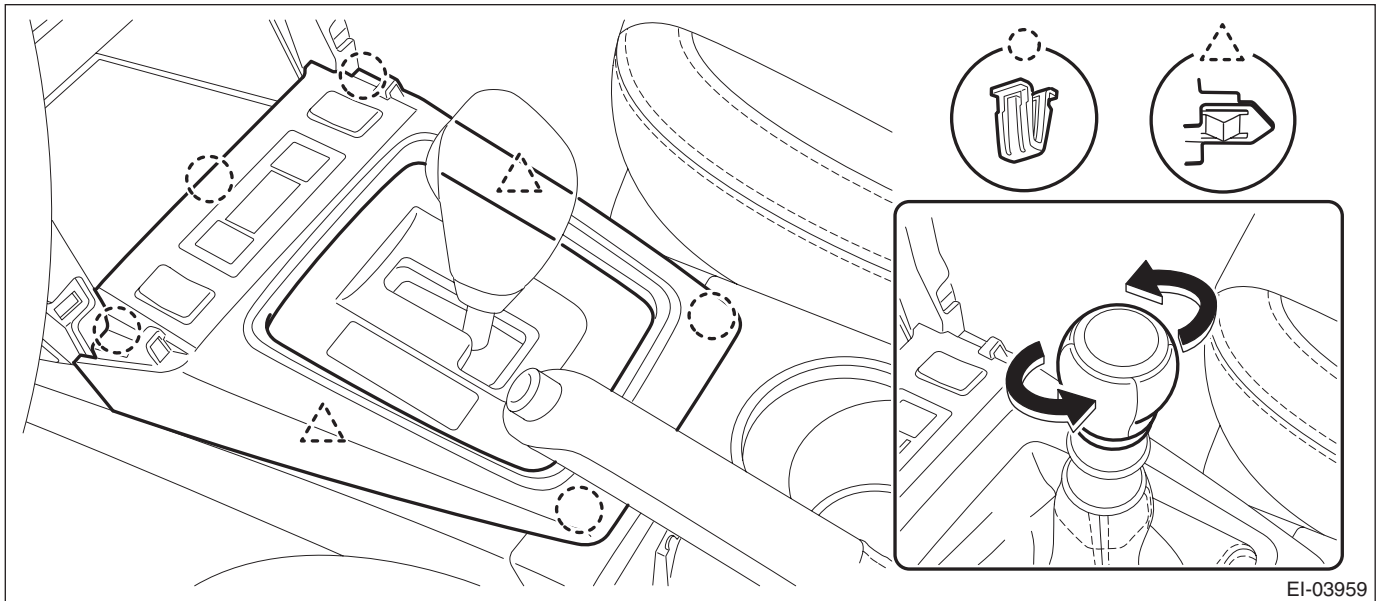
Parking Brake Lever

PARKING BRAKE

9) Remove the cover - shift lever.

(1) Remove the shift knob. (MT model)

(2) Release the clips and claws, then pull up the cover - shift lever.

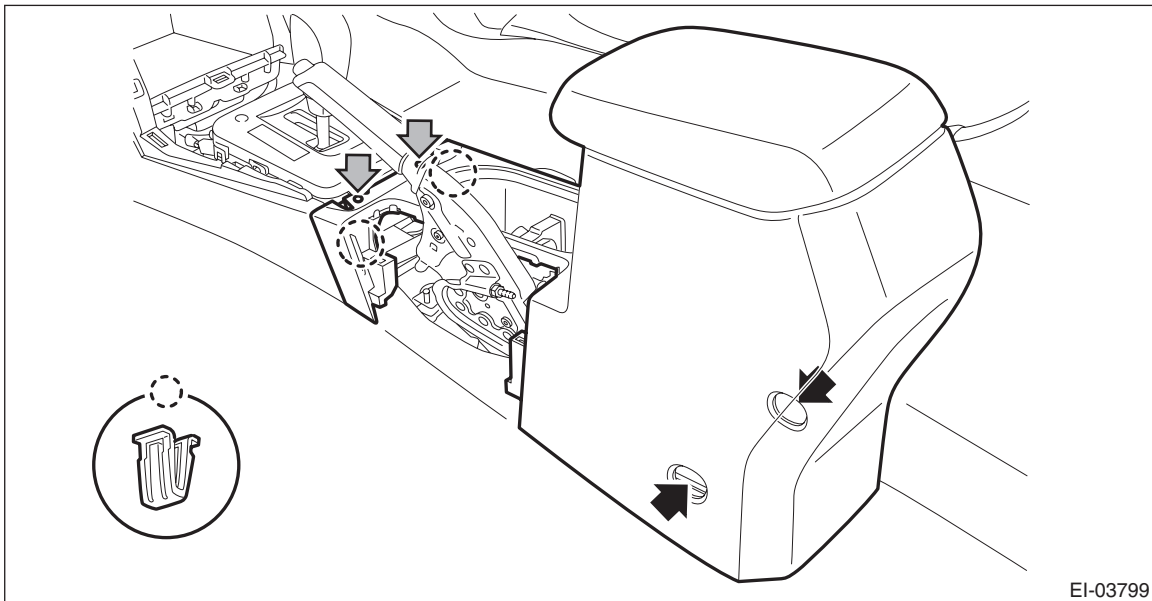


EI-03959

10) Remove the console box assembly.

(1) Move the seat forward, and remove the bolts after detaching the left and right caps.

(2) Remove the screws and clips, disconnect the harness connector and remove the console box assembly.



EI-03799

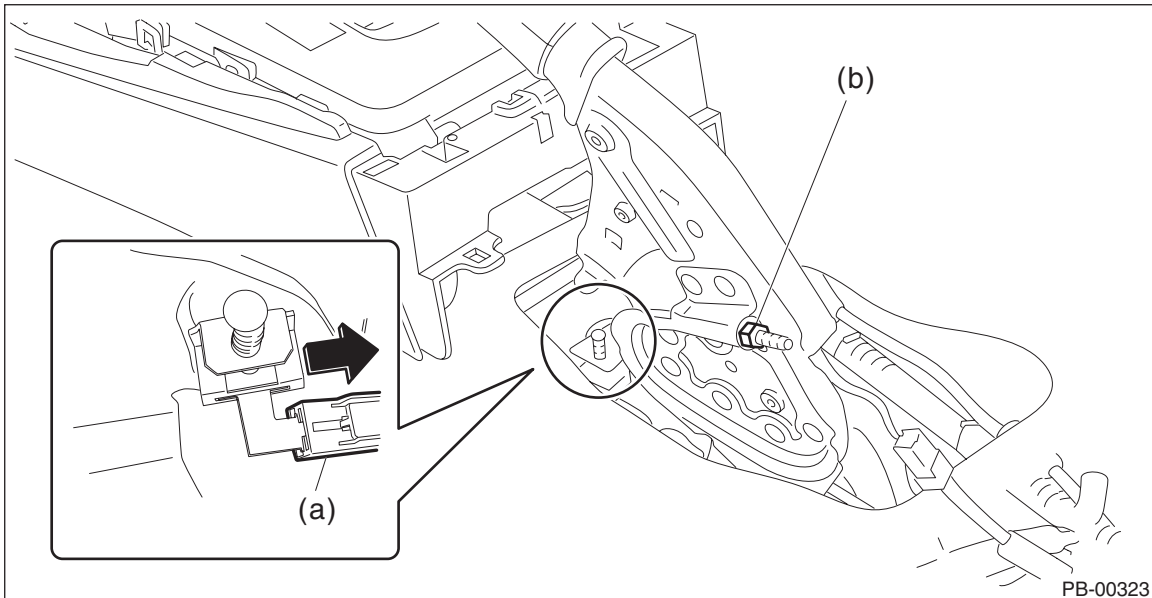
11) Remove the lever assembly - hand brake.

(1) Disconnect the connector (a) of the switch assembly - hand brake.

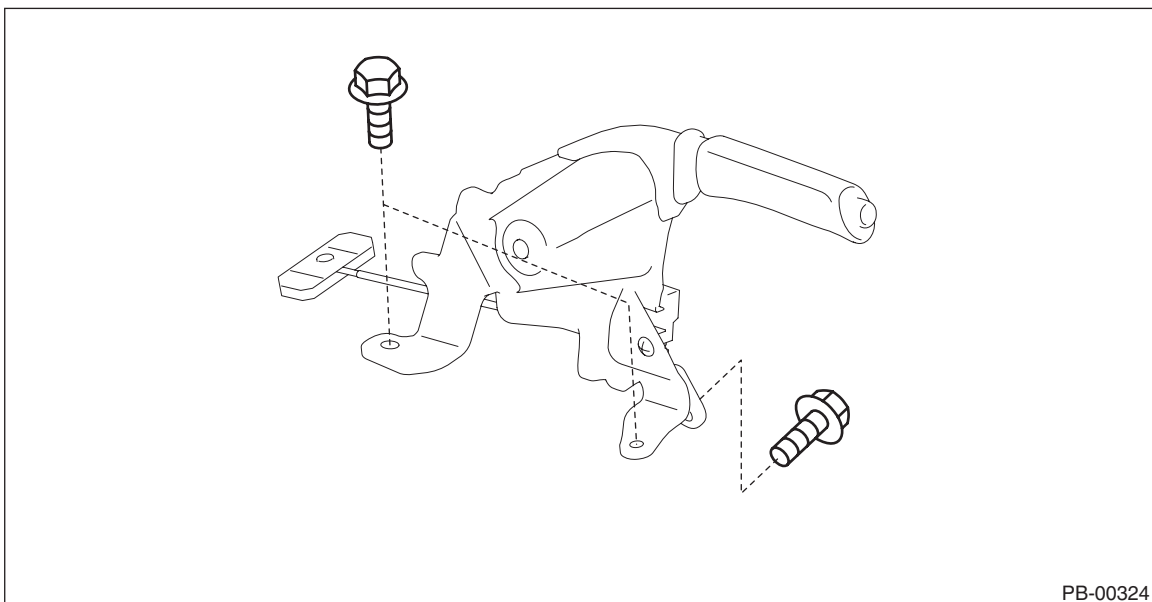
(2) Remove the adjusting nut (b).

CAUTION:

A self-locking nut is used for the adjusting nut of parking cable. Therefore, replace the self-locking nut with a new one when disassembling.



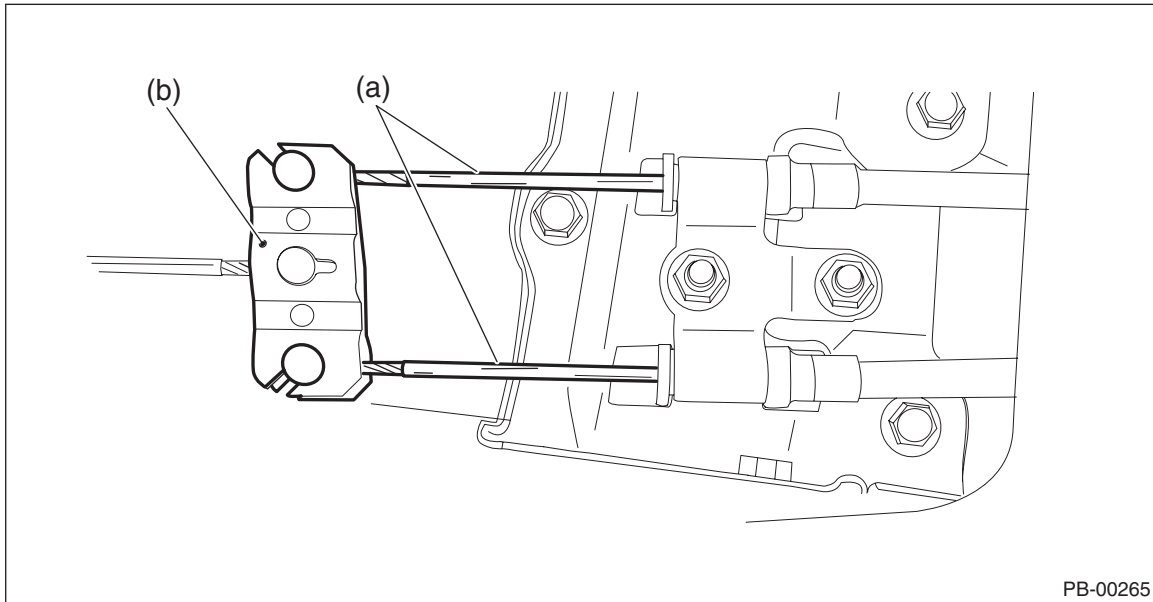
(3) Remove the bolt, and then remove the lever assembly - hand brake.



Parking Brake Lever

PARKING BRAKE

12) Remove the inner cable end (a) from the equalizer (b).

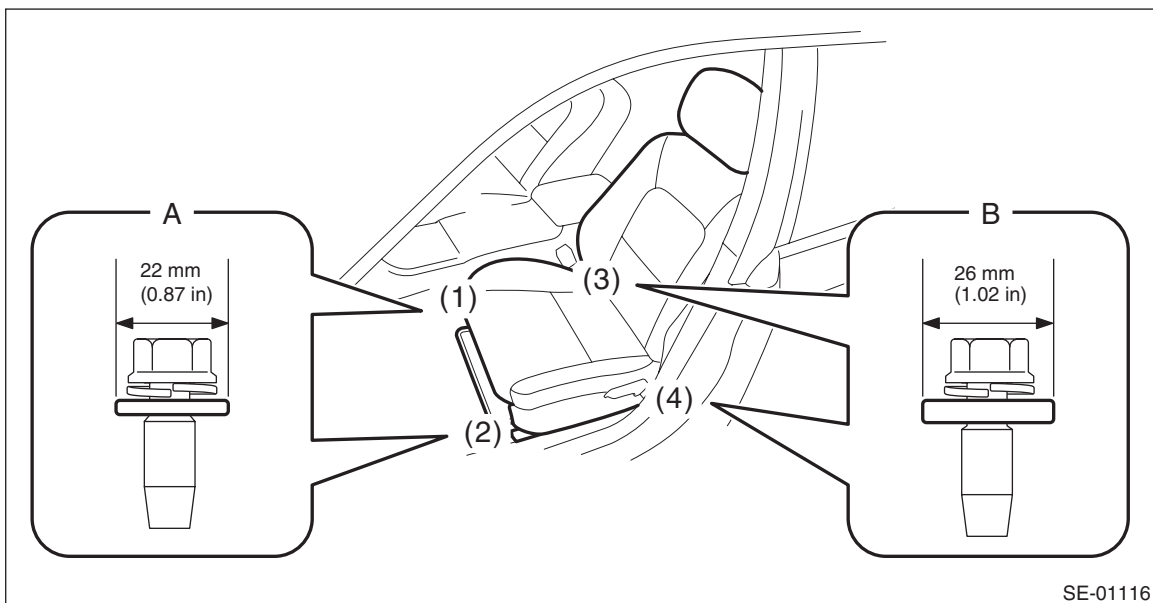


B: INSTALLATION

1) Install each part in the reverse order of removal.

CAUTION:

- The front seat mounting bolts differ between the front mounting points and the rear mounting points. When installing the front seat, make sure that you are using correct bolts at correct positions.
- Tighten the slide rail assembly installing bolts in the order as shown in the figure, in several steps by gradually increasing the torque until they reach the specified torque.



- Front (bolt A): Washer diameter 22 mm (0.87 in)
- Rear (bolt B): Washer diameter 26 mm (1.02 in)

Tightening torque:

Front seat assembly: 53 N·m (5.40 kgf-m, 39.1 ft-lb)

Tightening torque:

Lever assembly - hand brake: 18 N·m (1.84 kgf-m, 13.3 ft-lb)

Console box assembly: 6.5 N·m (0.66 kgf-m, 4.8 ft-lb)

2) Install a new adjusting nut (self-locking nut).

3) Be sure to adjust the lever stroke. <Ref. to PB-9, ADJUSTMENT, Parking Brake Lever.>

C: INSPECTION

1. LEVER ASSY

- 1) Operate the lever assembly - hand brake 3 to 4 times and fully return the lever assembly - hand brake.
- 2) While slowly pulling up the lever assembly - hand brake, count the notches.

Lever stroke:

7 to 8 notches when pulled with a force of 200 N (20.4 kgf, 45 lbf)

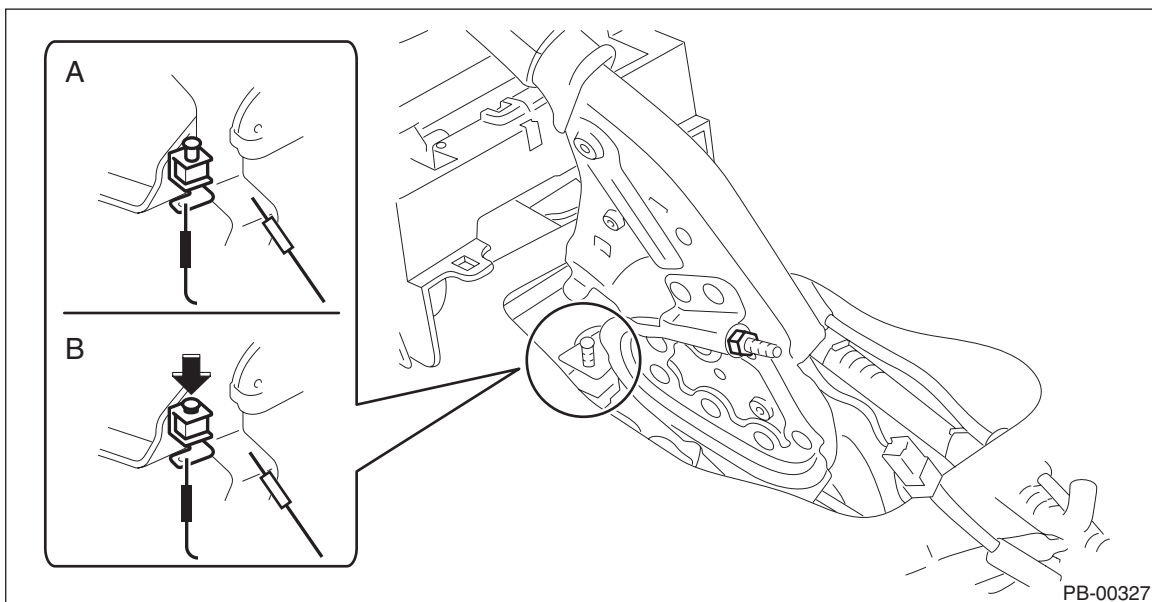
If it is not within the specified value, adjust the parking brake. <Ref. to PB-23, ADJUSTMENT, Parking Brake Assembly (Rear Disc Brake).>

2. SWITCH ASSEMBLY

- 1) Measure the resistance between the switch assembly - hand brake and chassis ground.

Preparation tool:

Circuit tester



	Switch position	Standard
A	When shaft is free (ON)	Less than 1 Ω
B	When shaft is pressed in (OFF)	10 k Ω or more

If it is not within the specified value, replace the switch assembly - hand brake.

D: ADJUSTMENT

Adjust the parking lever stroke. <Ref. to PB-24, LEVER STROKE, ADJUSTMENT, Parking Brake Assembly (Rear Disc Brake).>