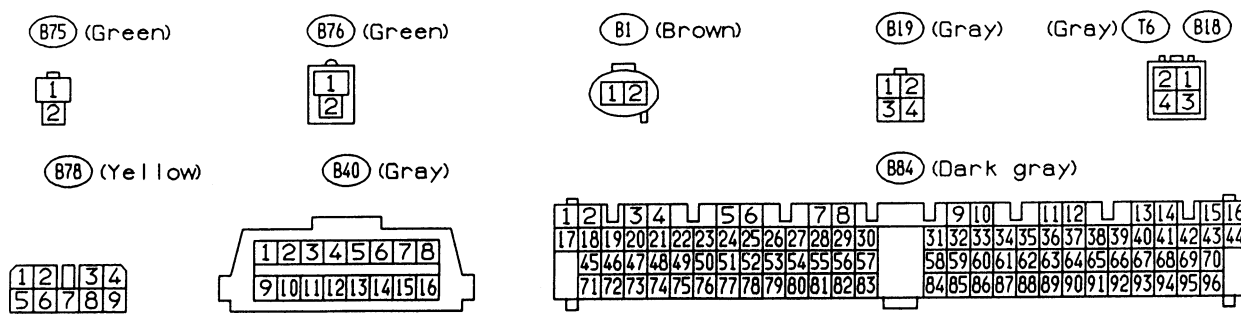
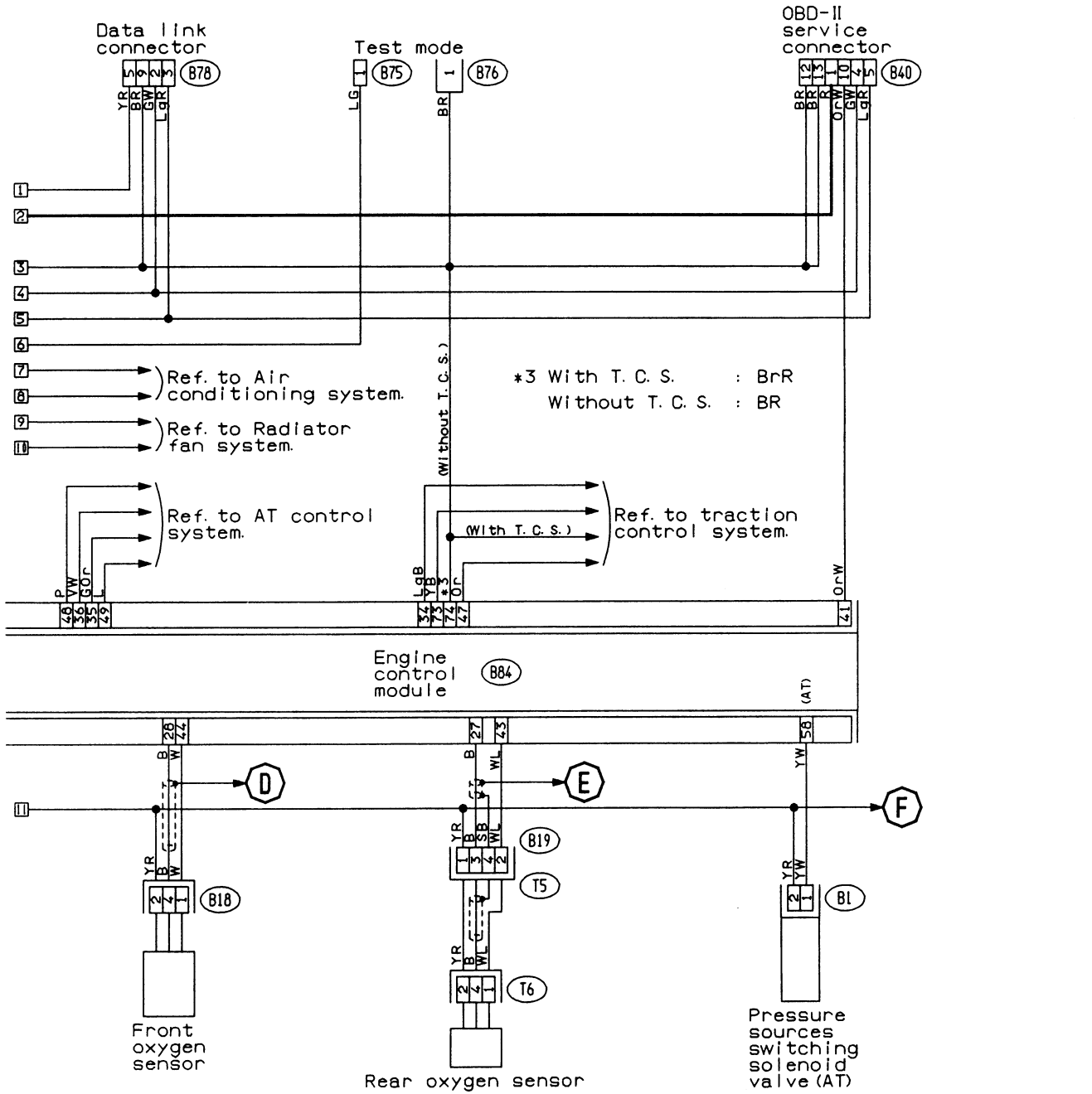
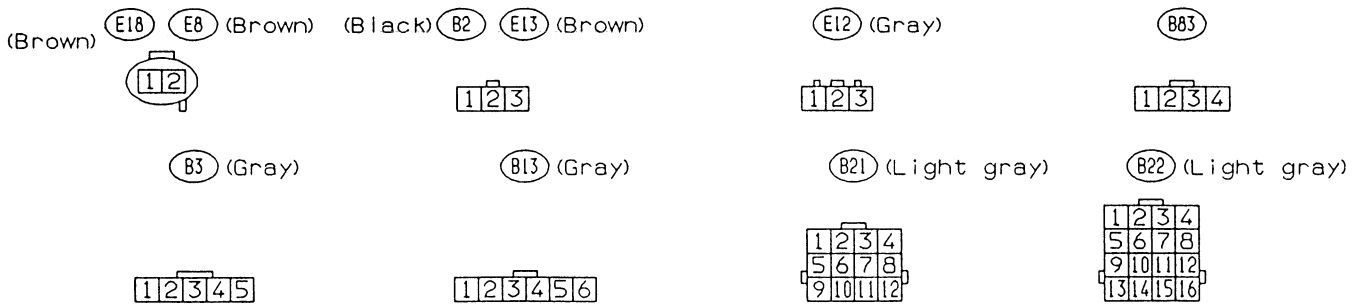
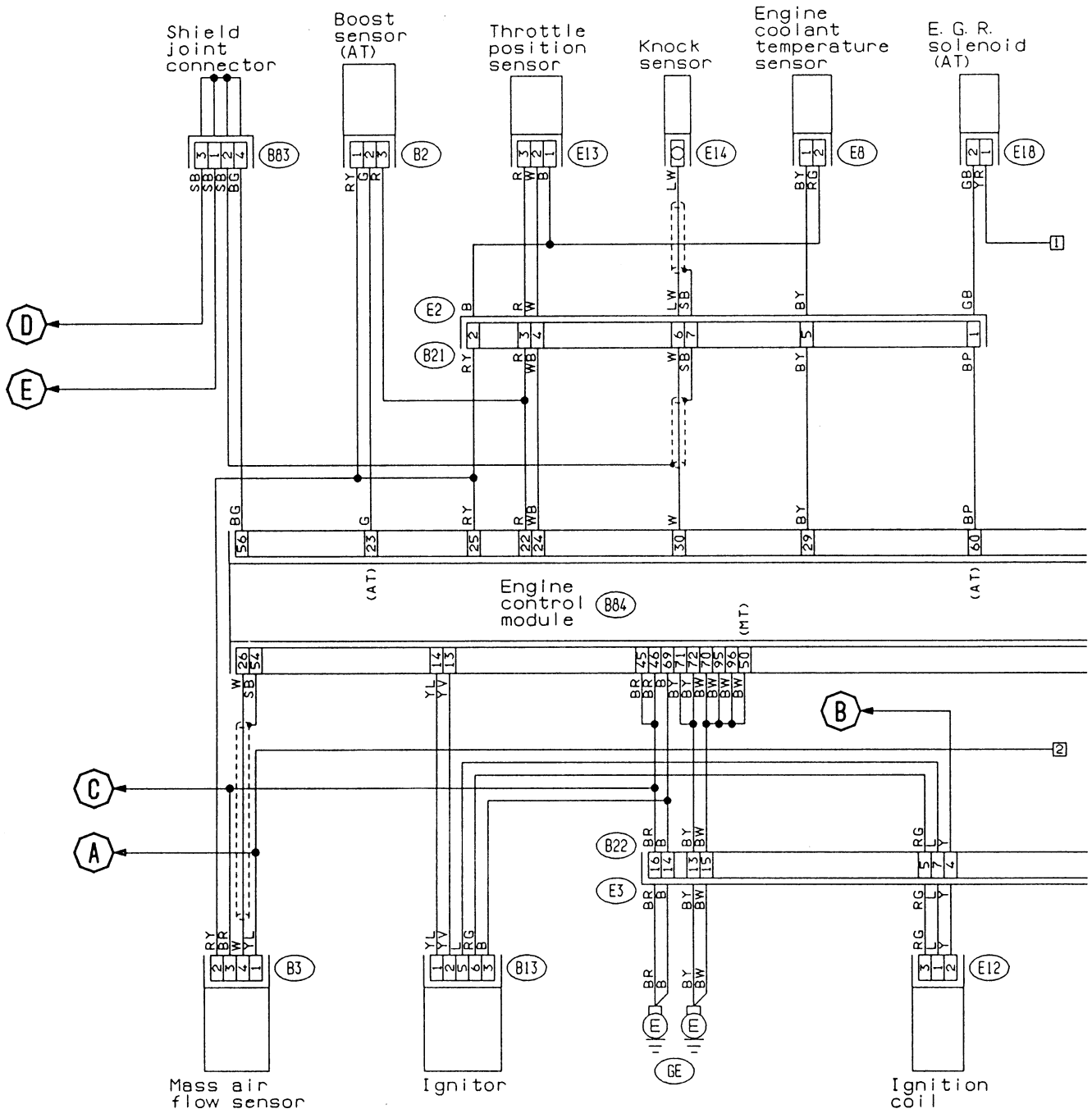


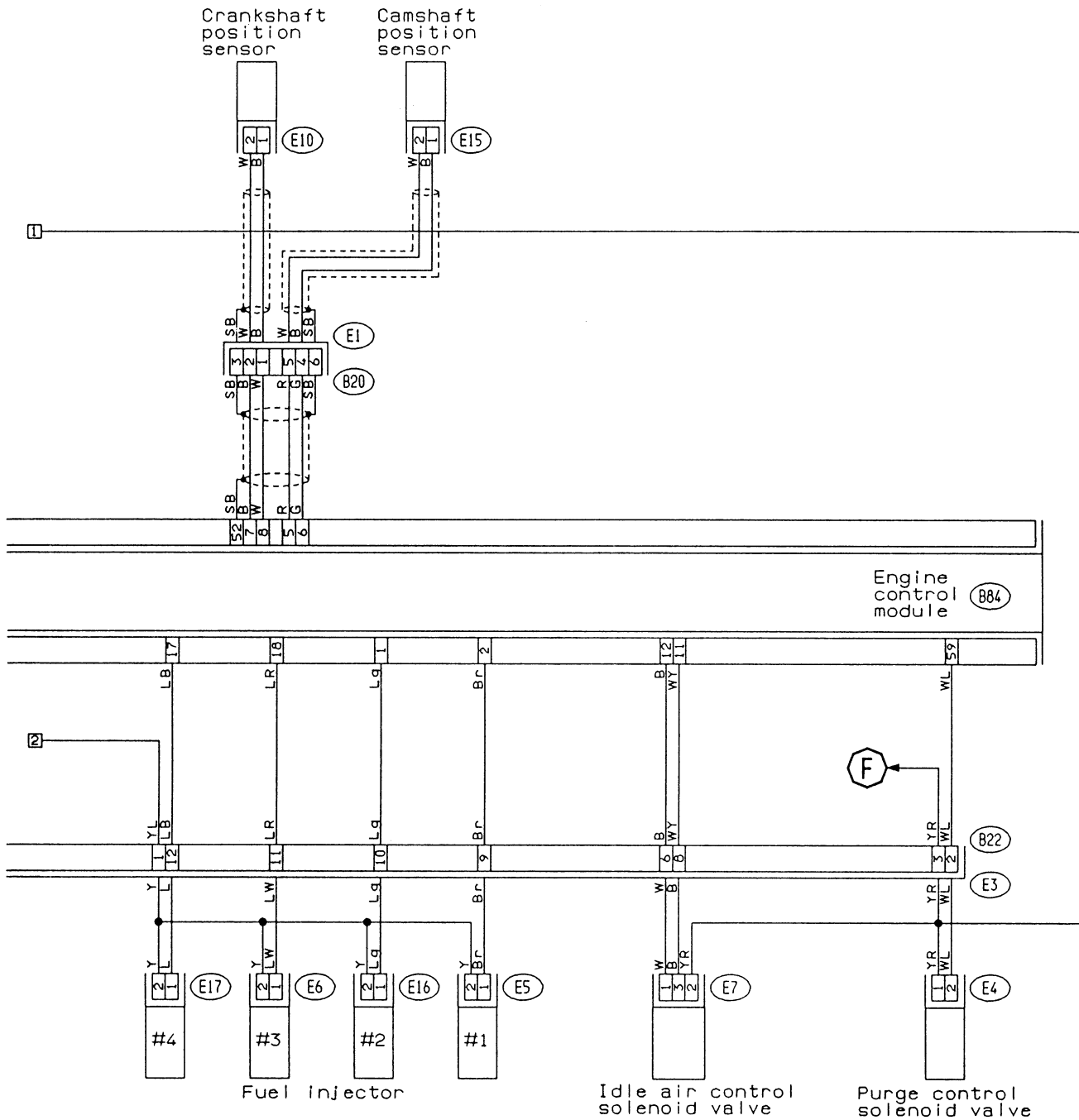


6. Wiring Diagram and Wiring Harness





6. Wiring Diagram and Wiring Harness



(E15) (Dark gray) (Light gray) (E5) (E16) (Light gray)  
 (E10) (Gray) (Dark gray) (E6) (E17) (Dark gray)

(884) (Dark gray)



(E4) (Blue)

(E7) (Gray)

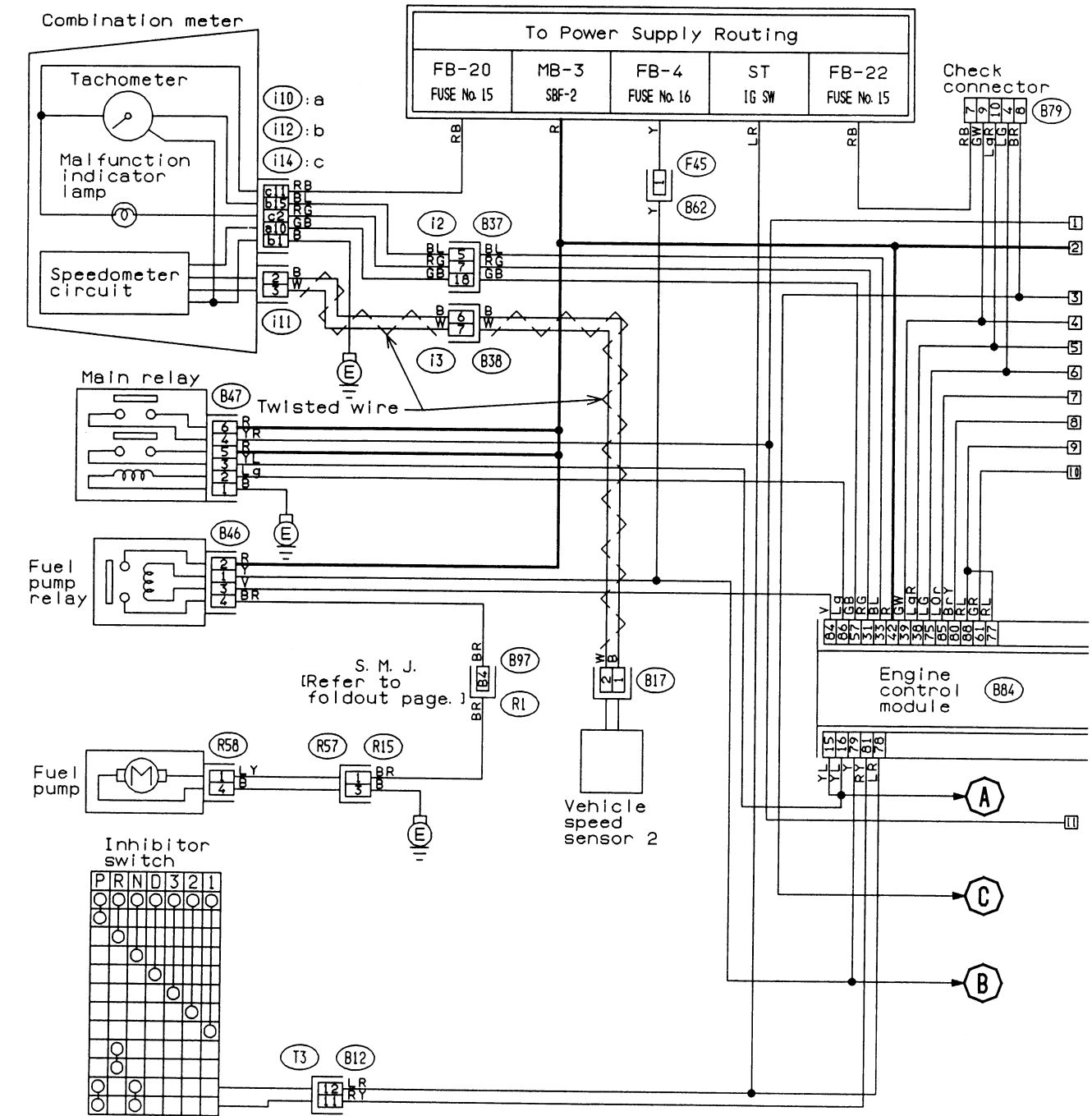
(820) (Light gray)



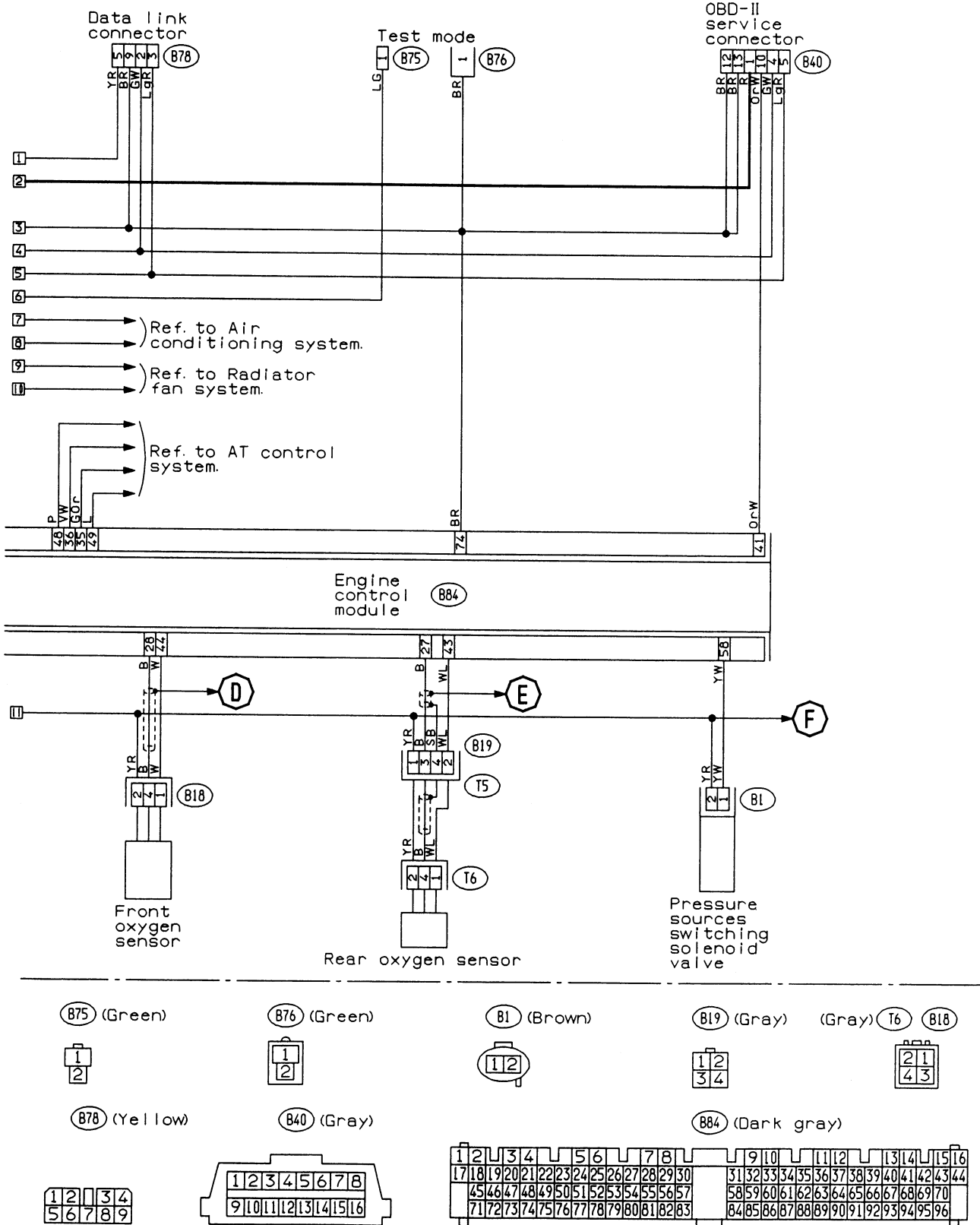
1	2	3	4	5	6	7	8	9	10	11	12	13	14	15	16																																				
17	18	19	20	21	22	23	24	25	26	27	28	29	30	31	32	33	34	35	36	37	38	39	40	41	42	43	44																								
45	46	47	48	49	50	51	52	53	54	55	56	57	58	59	60	61	62	63	64	65	66	67	68	69	70	71	72	73	74	75	76	77	78	79	80	81	82	83	84	85	86	87	88	89	90	91	92	93	94	95	96

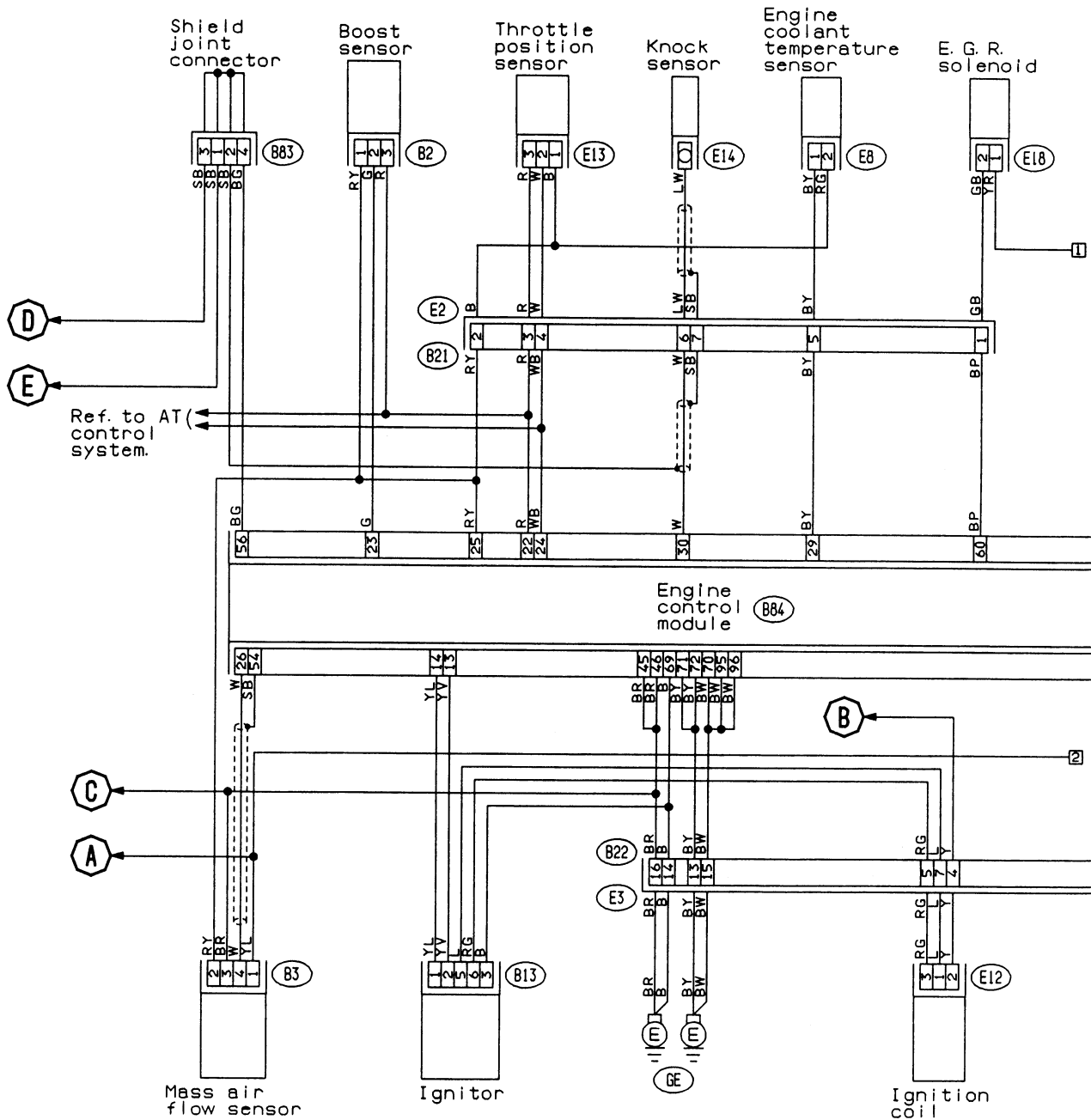
1. ENGINE ELECTRICAL SYSTEM

● RHD model



6. Wiring Diagram and Wiring Harness

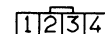




(Brown) (E18) (E8) (Brown) (Black) (B2) (E13) (Brown)

(E12) (Gray)

(B83)

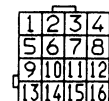
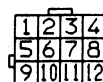
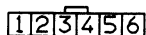
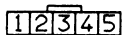


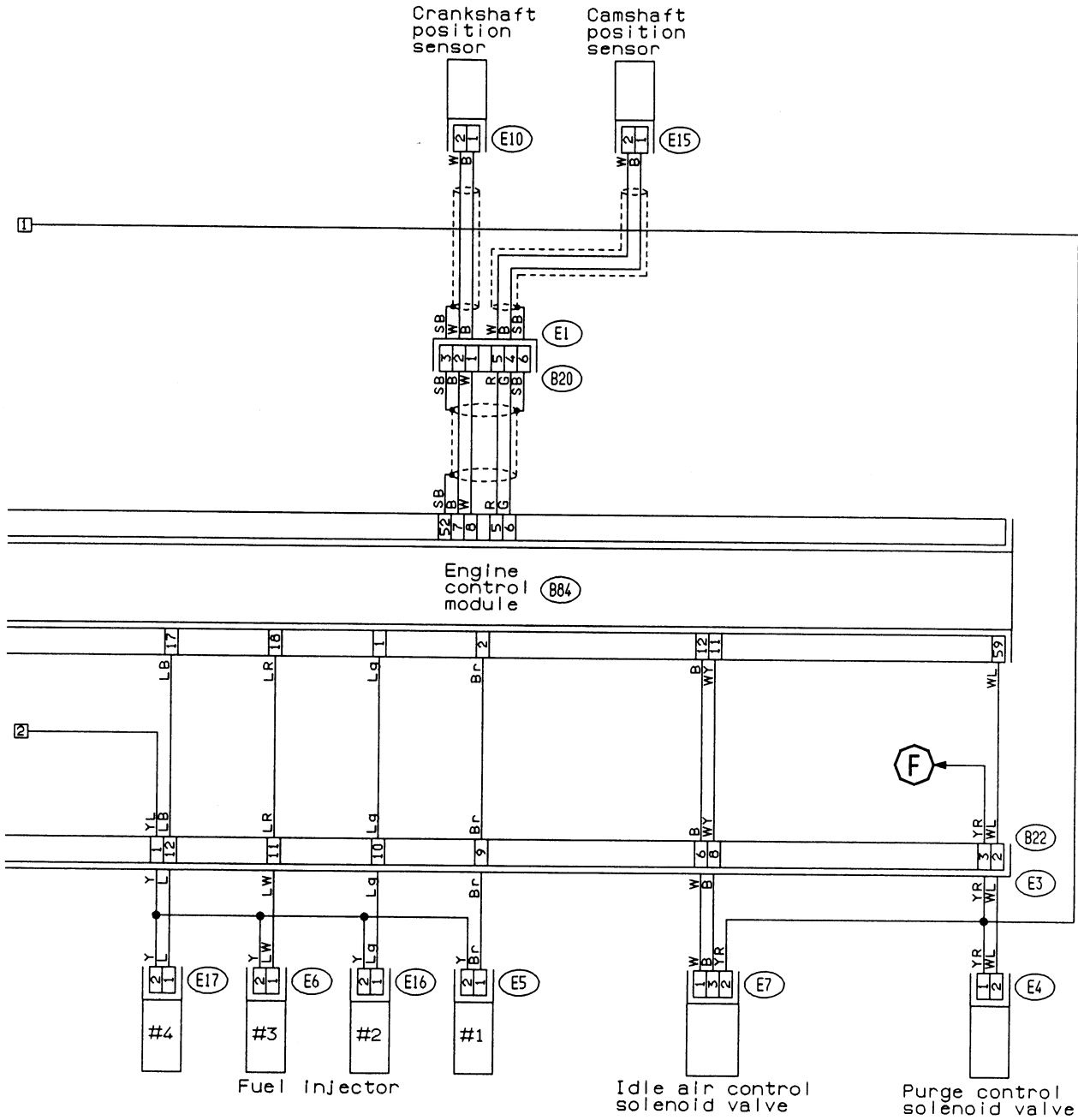
(B3) (Gray)

(B13) (Gray)

(B21) (Light gray)

(B22) (Light gray)





- (E15) (Dark gray) (Light gray) (E5) (E16) (Light gray)
- (E10) (Gray) (Dark gray) (E6) (E17) (Dark gray)



(B84) (Dark gray)

(E4) (Blue)

(E7) (Gray)

(B20) (Light gray)

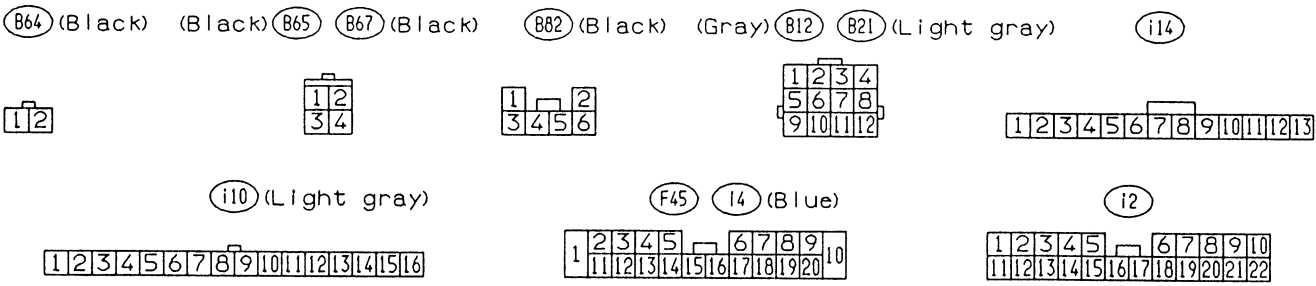
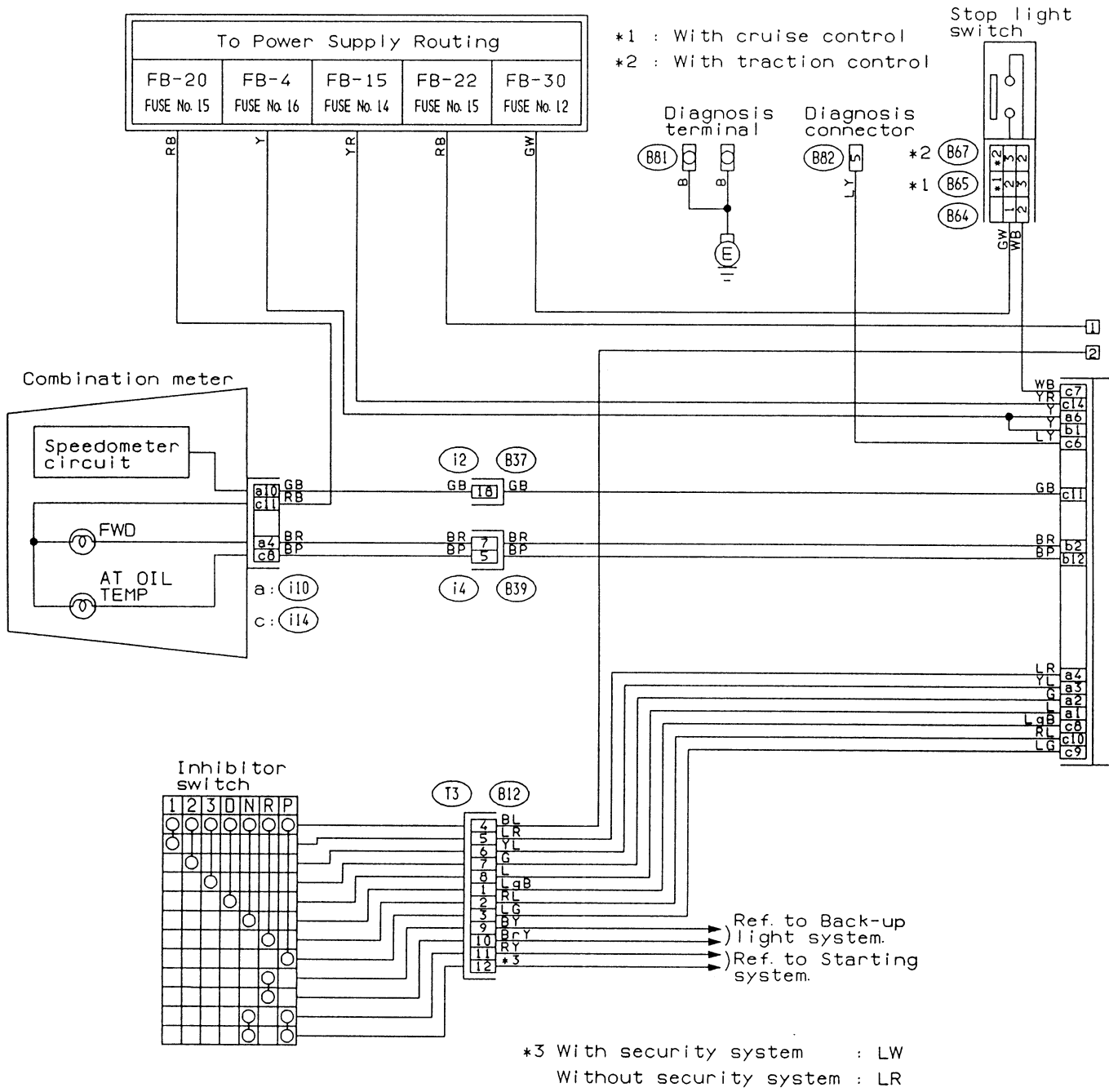


1	2	3	4	5	6	7	8	9	10	11	12	13	14	15	16																																				
17	18	19	20	21	22	23	24	25	26	27	28	29	30	31	32	33	34	35	36	37	38	39	40	41	42	43	44																								
45	46	47	48	49	50	51	52	53	54	55	56	57	58	59	60	61	62	63	64	65	66	67	68	69	70	71	72	73	74	75	76	77	78	79	80	81	82	83	84	85	86	87	88	89	90	91	92	93	94	95	96

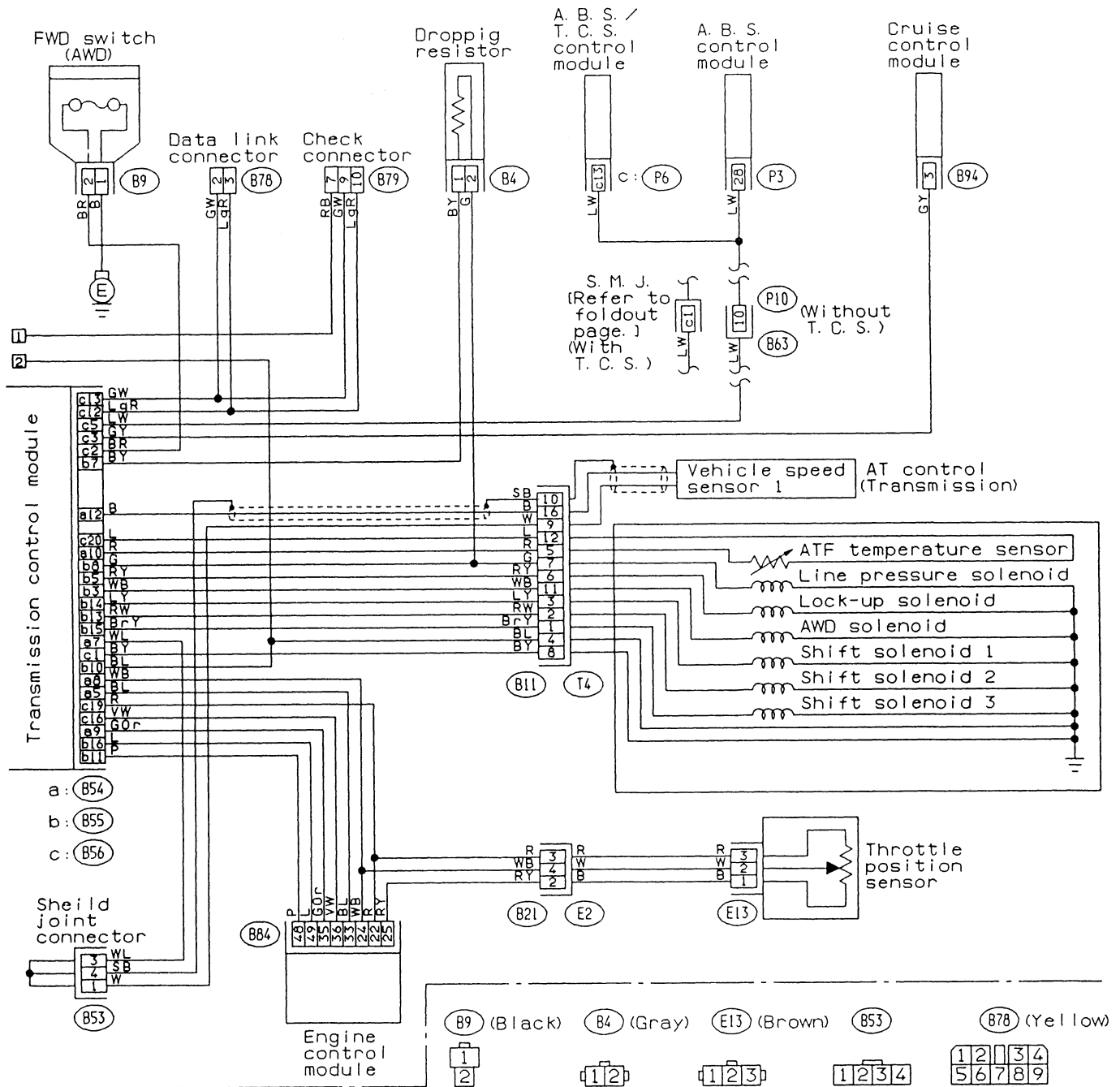


2. AT CONTROL SYSTEM

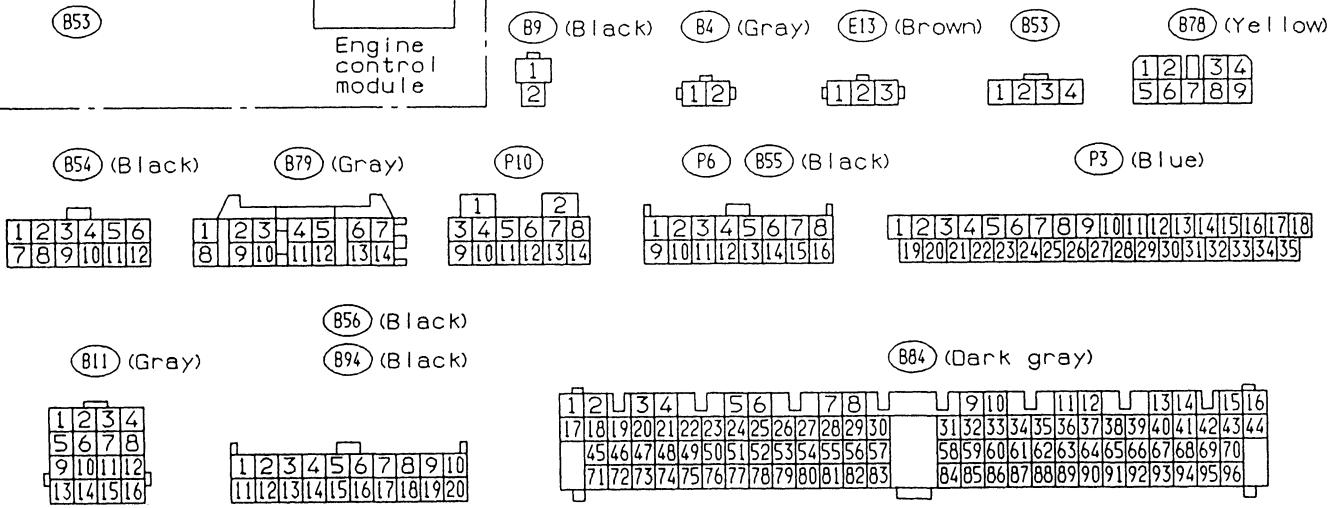
● LHD model



6. Wiring Diagram and Wiring Harness

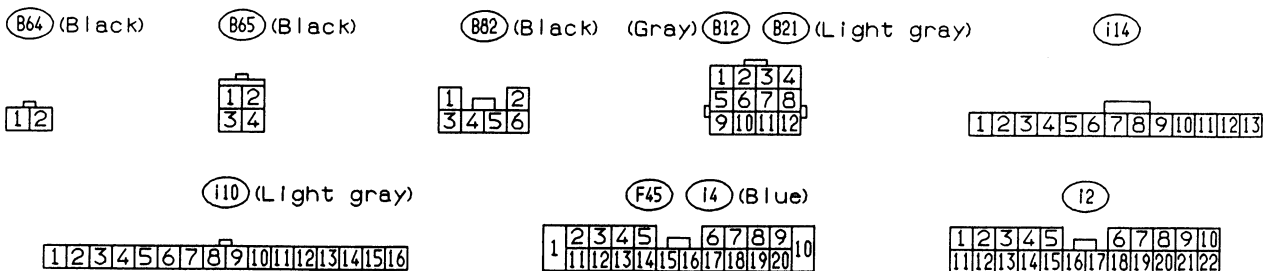
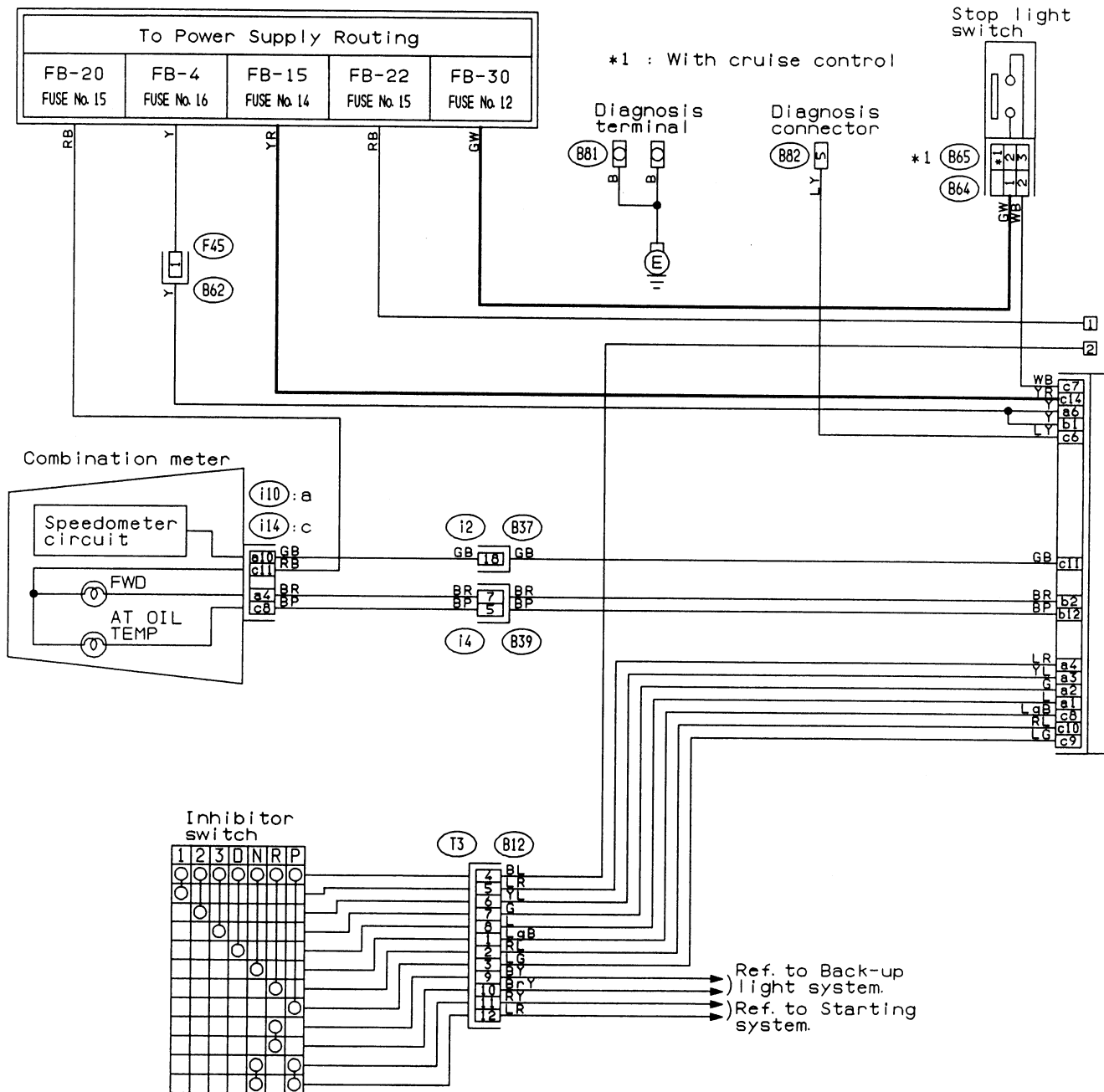


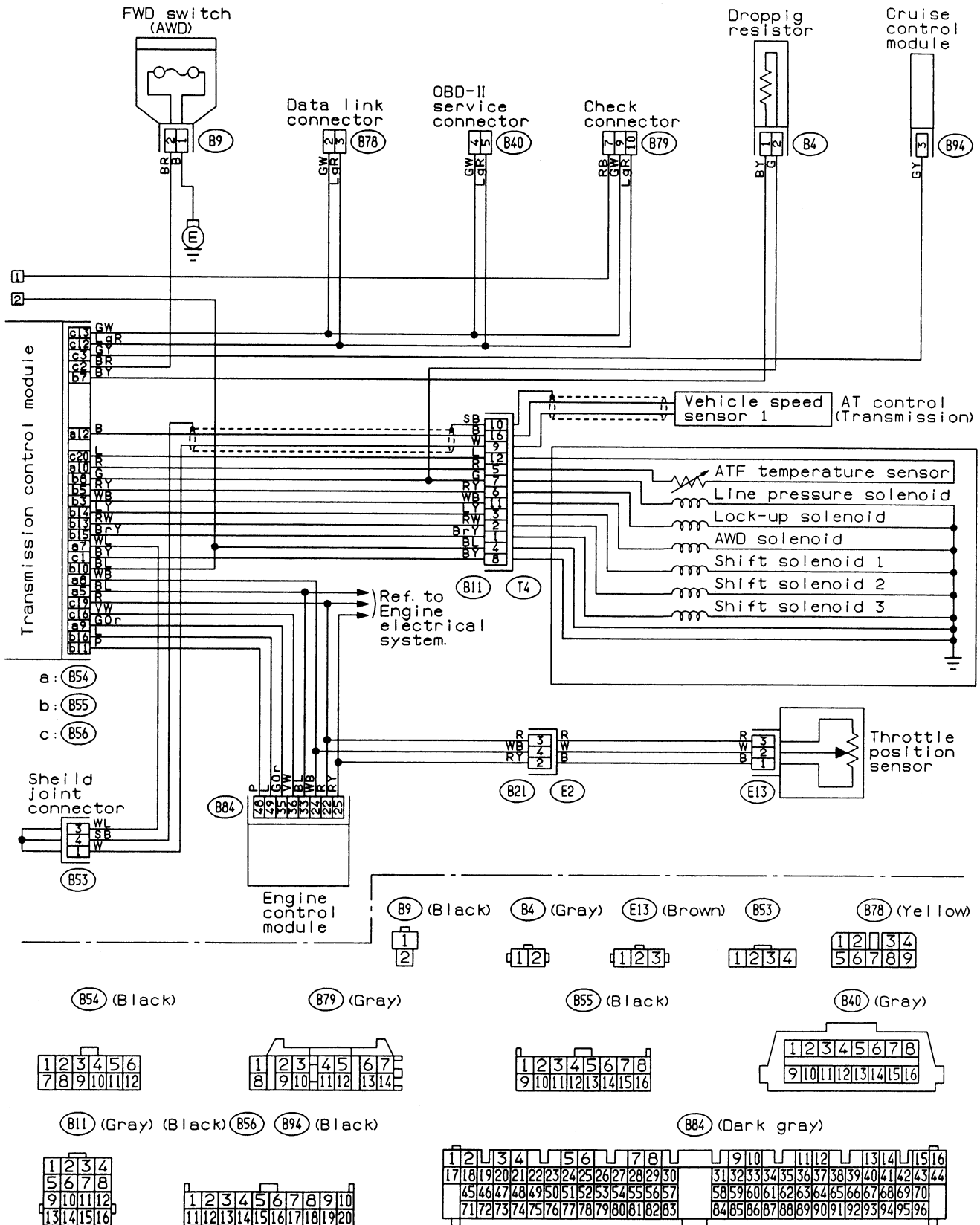
- a: (B54)
- b: (B55)
- c: (B56)



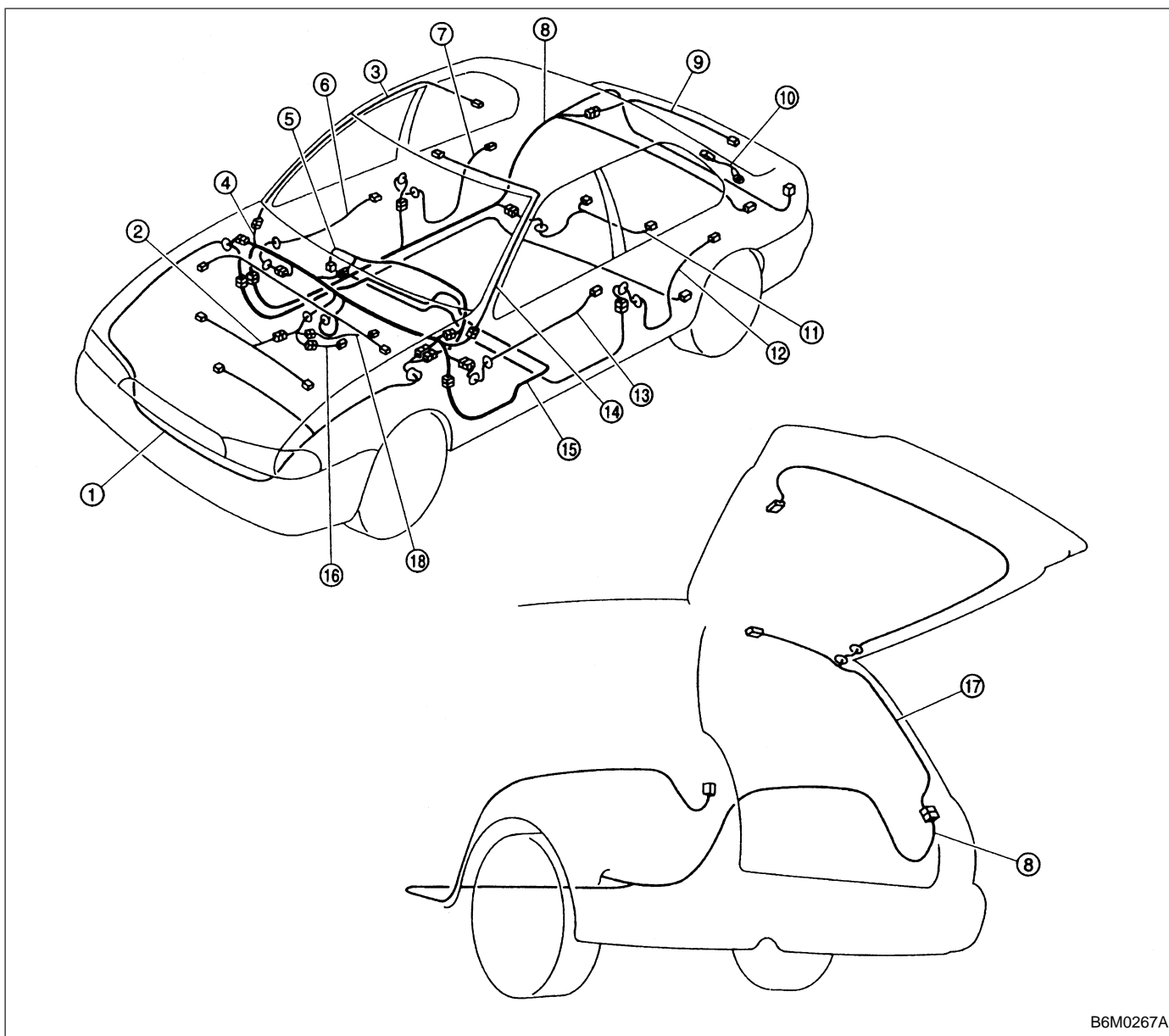
2. AT CONTROL SYSTEM

● RHD model





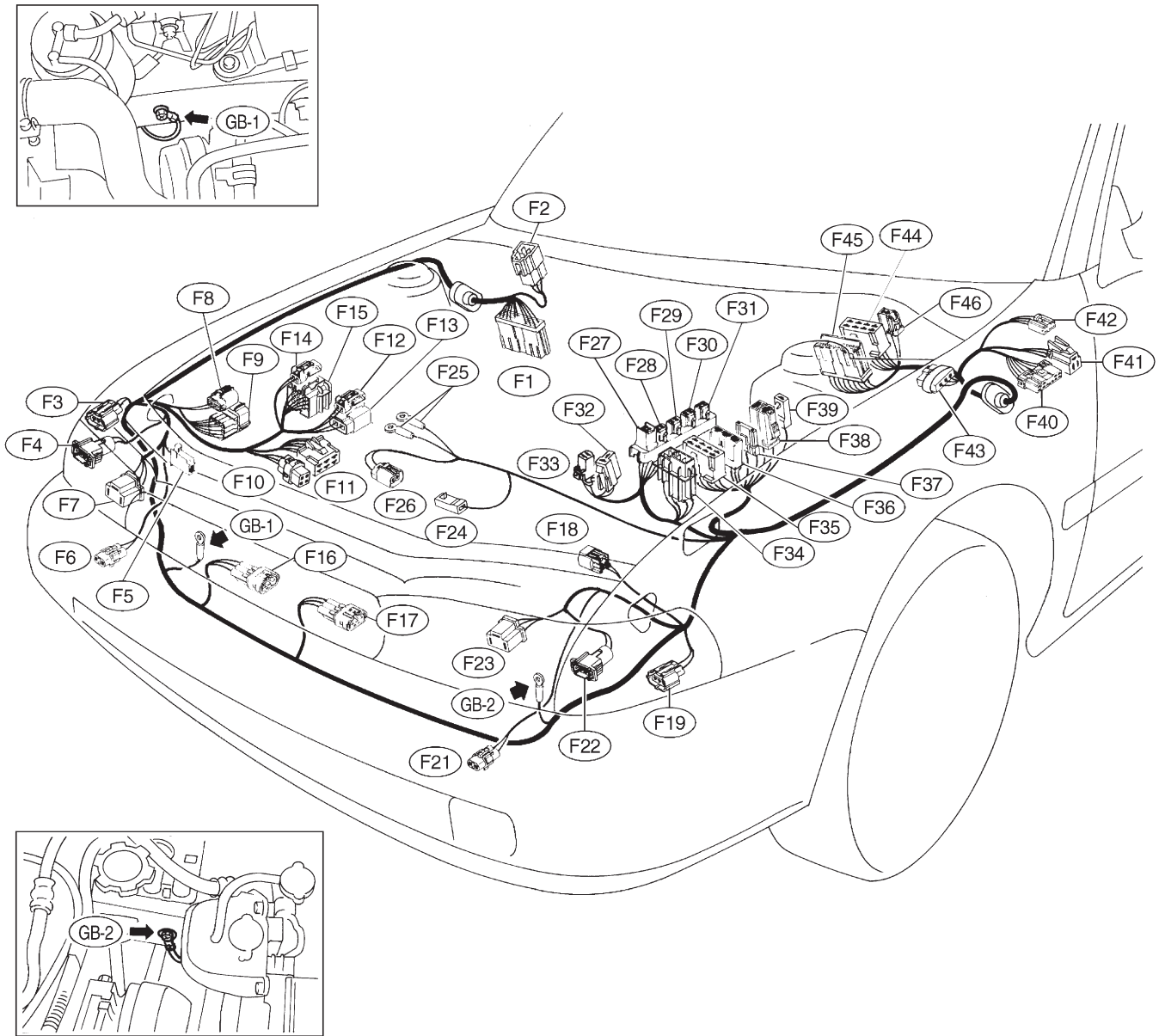
**B: ELECTRICAL WIRING HARNESS AND GROUND POINT**



B6M0267A

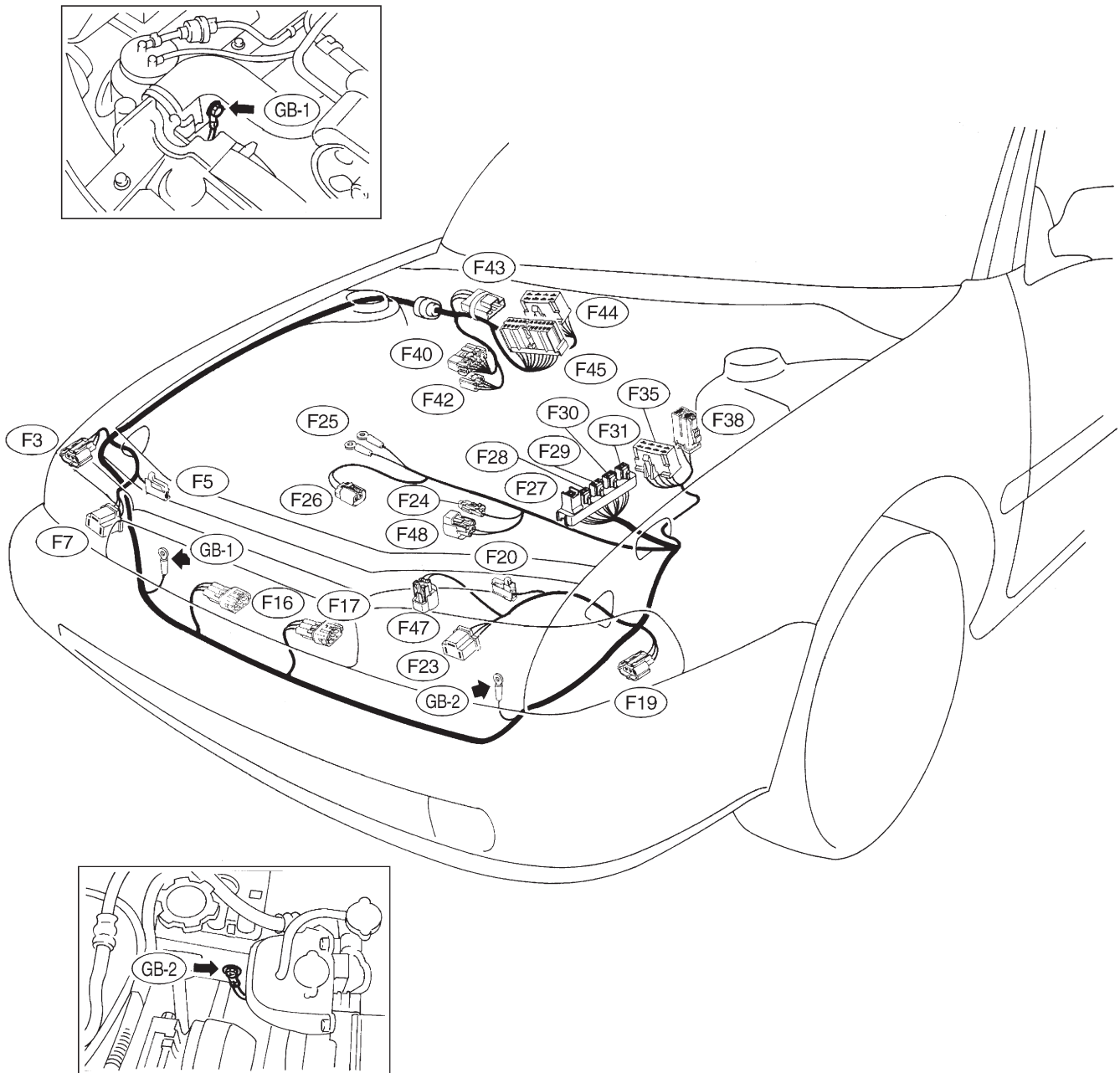
- |                                   |                                     |
|-----------------------------------|-------------------------------------|
| ① Front wiring harness            | ⑩ Rear defogger ground cord (Sedan) |
| ② Engine wiring harness           | ⑪ Fuel tank cord                    |
| ③ Room light cord                 | ⑫ Rear door cord LH                 |
| ④ Bulkhead wiring harness         | ⑬ Front door cord LH                |
| ⑤ Instrument panel wiring harness | ⑭ Sunroof cord                      |
| ⑥ Front door cord RH              | ⑮ Floor wiring harness              |
| ⑦ Rear door cord RH               | ⑯ Transmission cord                 |
| ⑧ Rear wiring harness             | ⑰ Rear gate cord (Wagon)            |
| ⑨ Trunk lid cord (Sedan)          | ⑱ Rear oxygen sensor cord           |

1. FRONT WIRING HARNESS AND GROUND POINT (LHD MODEL)



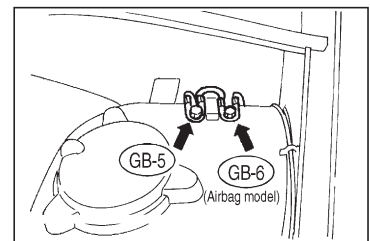
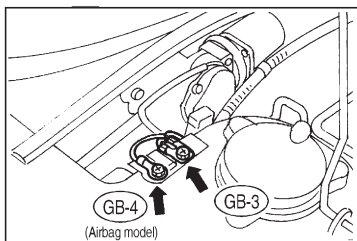
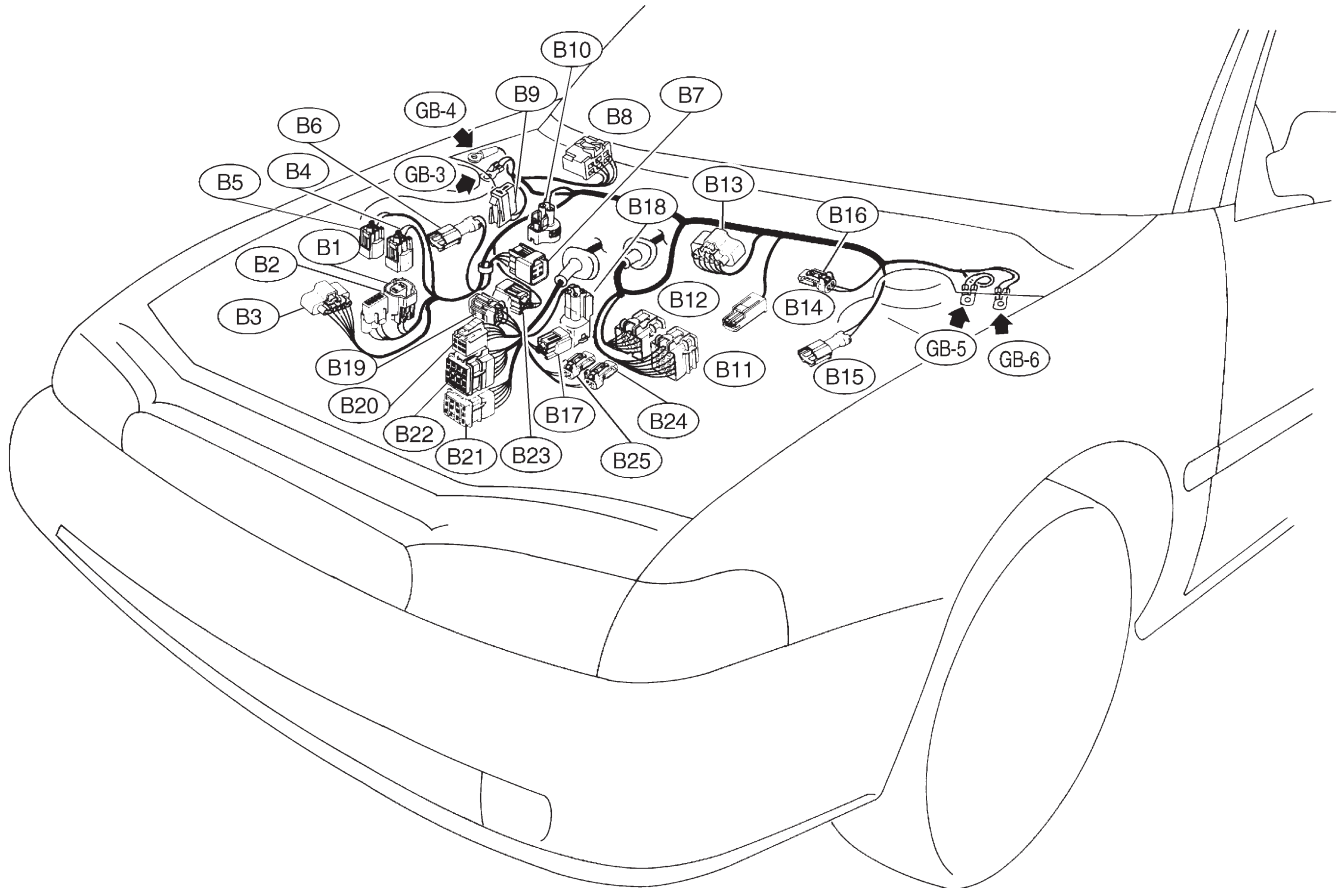
OBD0729

2. FRONT WIRING HARNESS AND GROUND POINT (RHD MODEL)



B2M0438

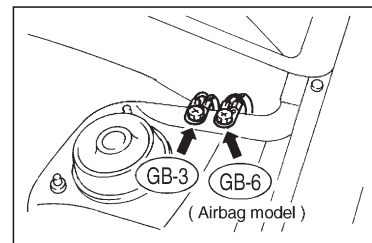
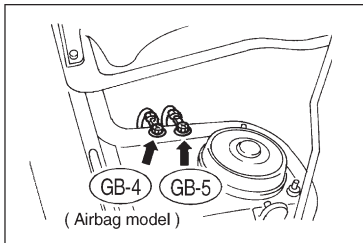
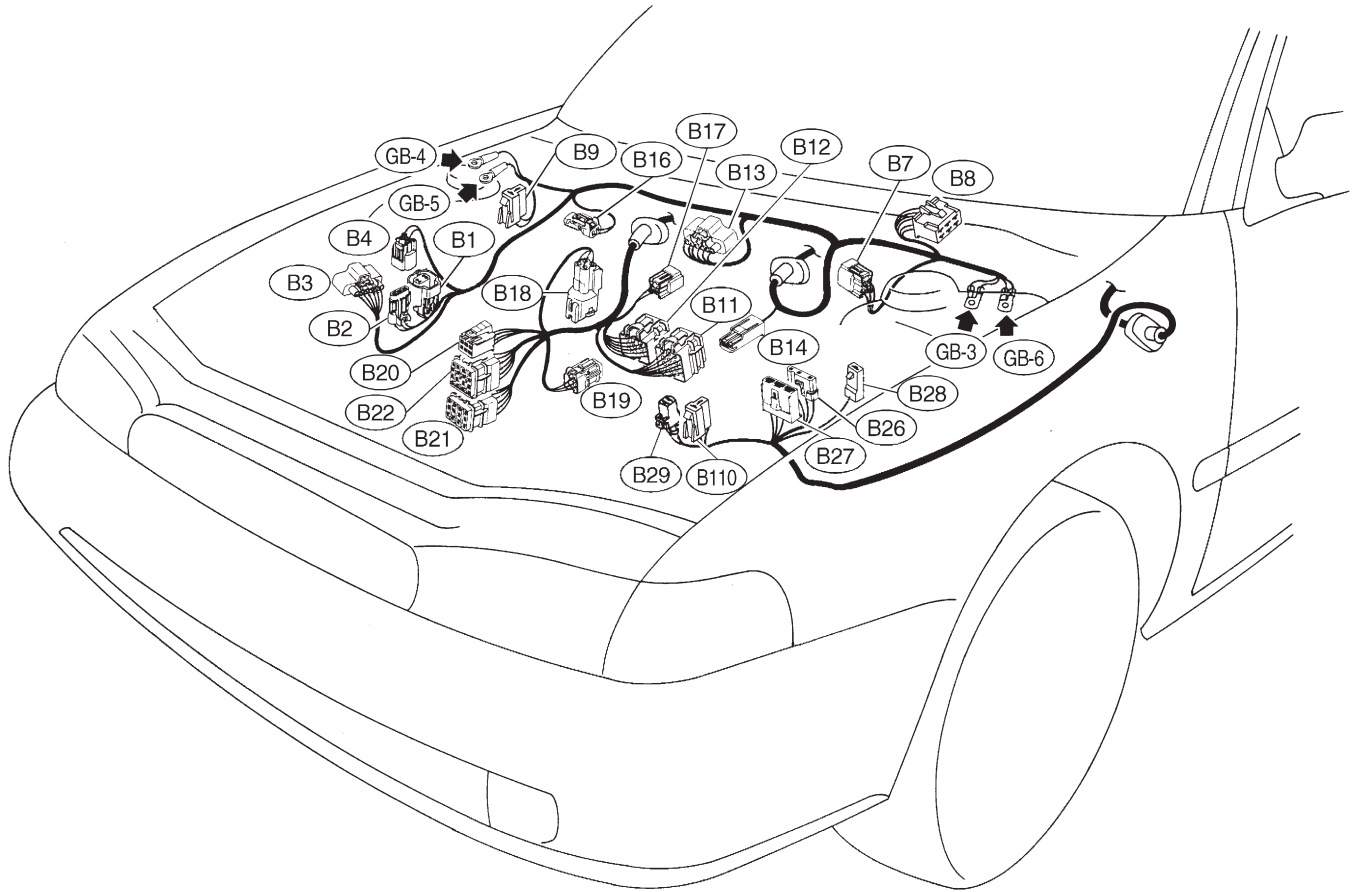
3. BULKHEAD WIRING HARNESS AND GROUND POINT (IN ENGINE ROOM) (LHD MODEL)



OBD0730

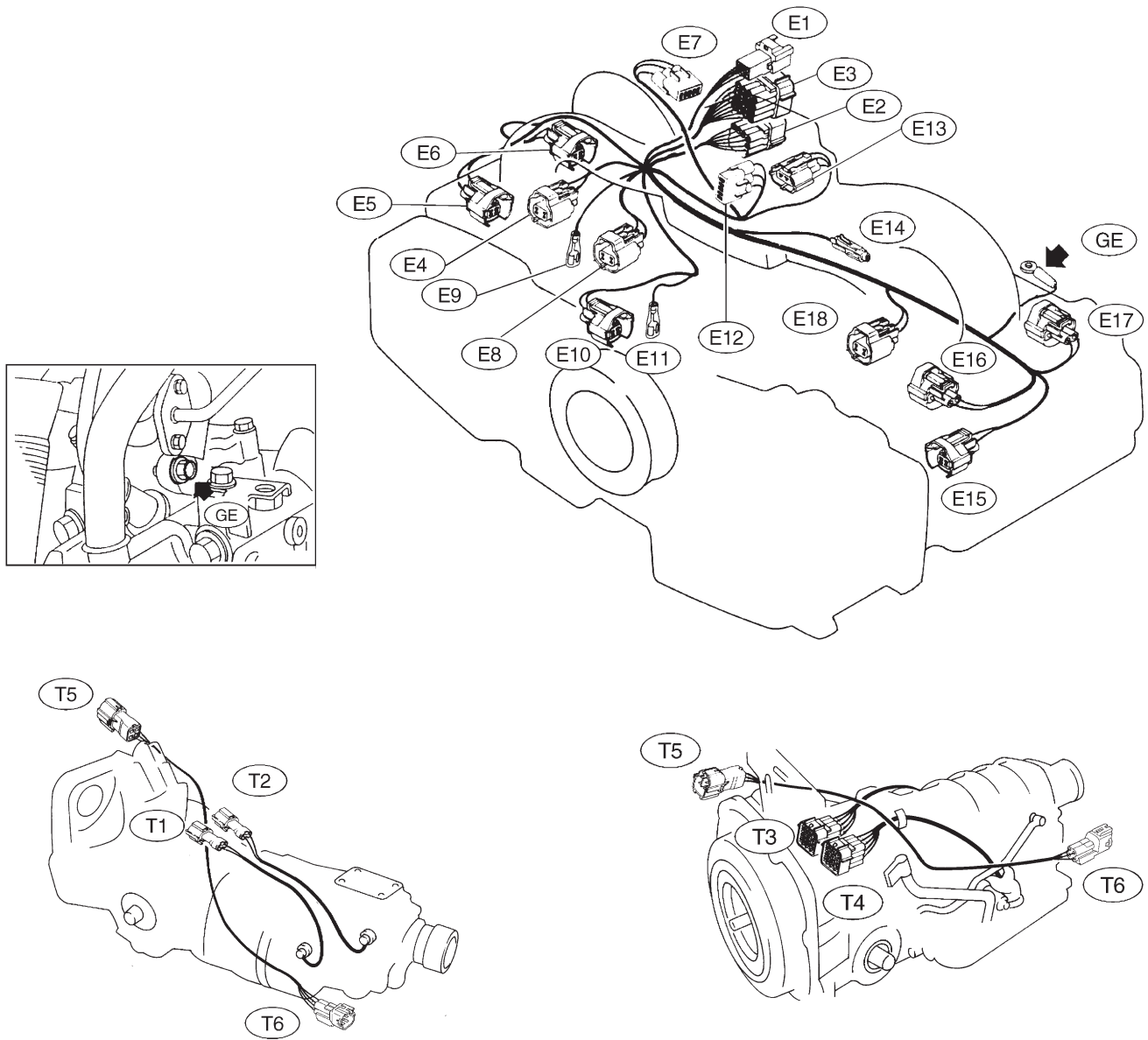


4. BULKHEAD WIRING HARNESS AND GROUND POINT (IN ENGINE ROOM) (RHD MODEL)



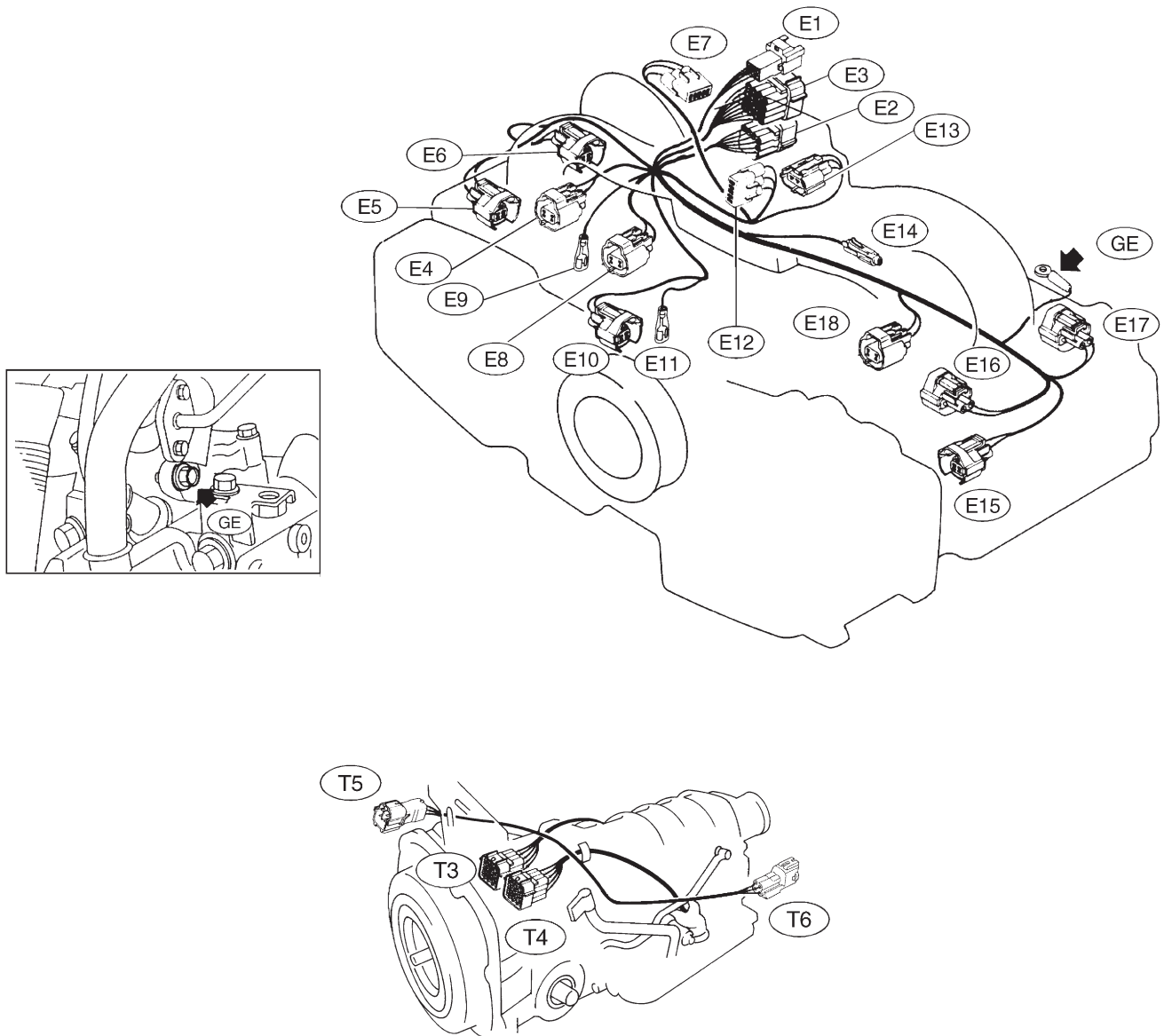
B2M0439

5. ENGINE WIRING HARNESS, TRANSMISSION HARNESS AND GROUND POINT (LHD MODEL)



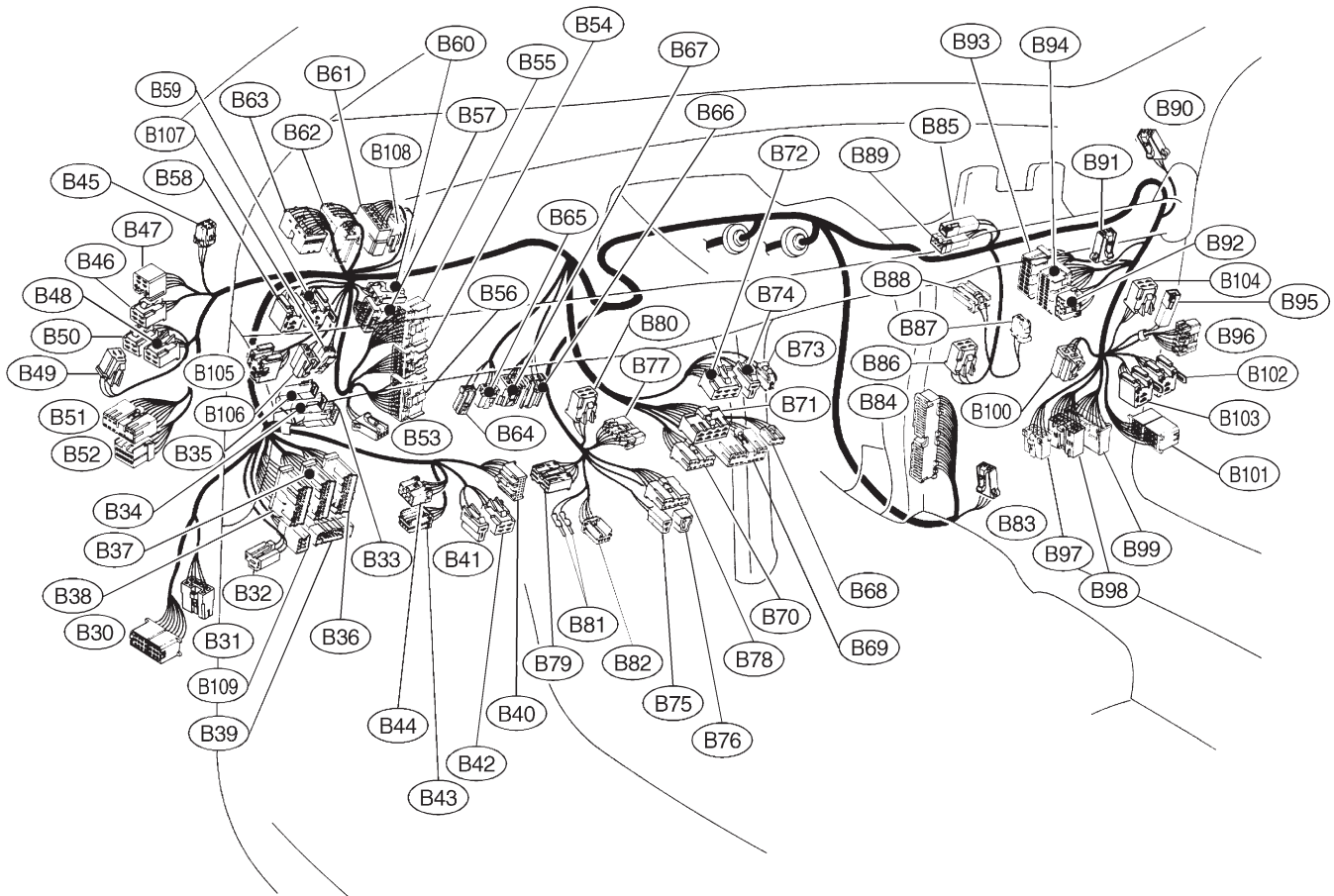
OBD0731

6. ENGINE WIRING HARNESS, TRANSMISSION HARNESS AND GROUND POINT (RHD MODEL)



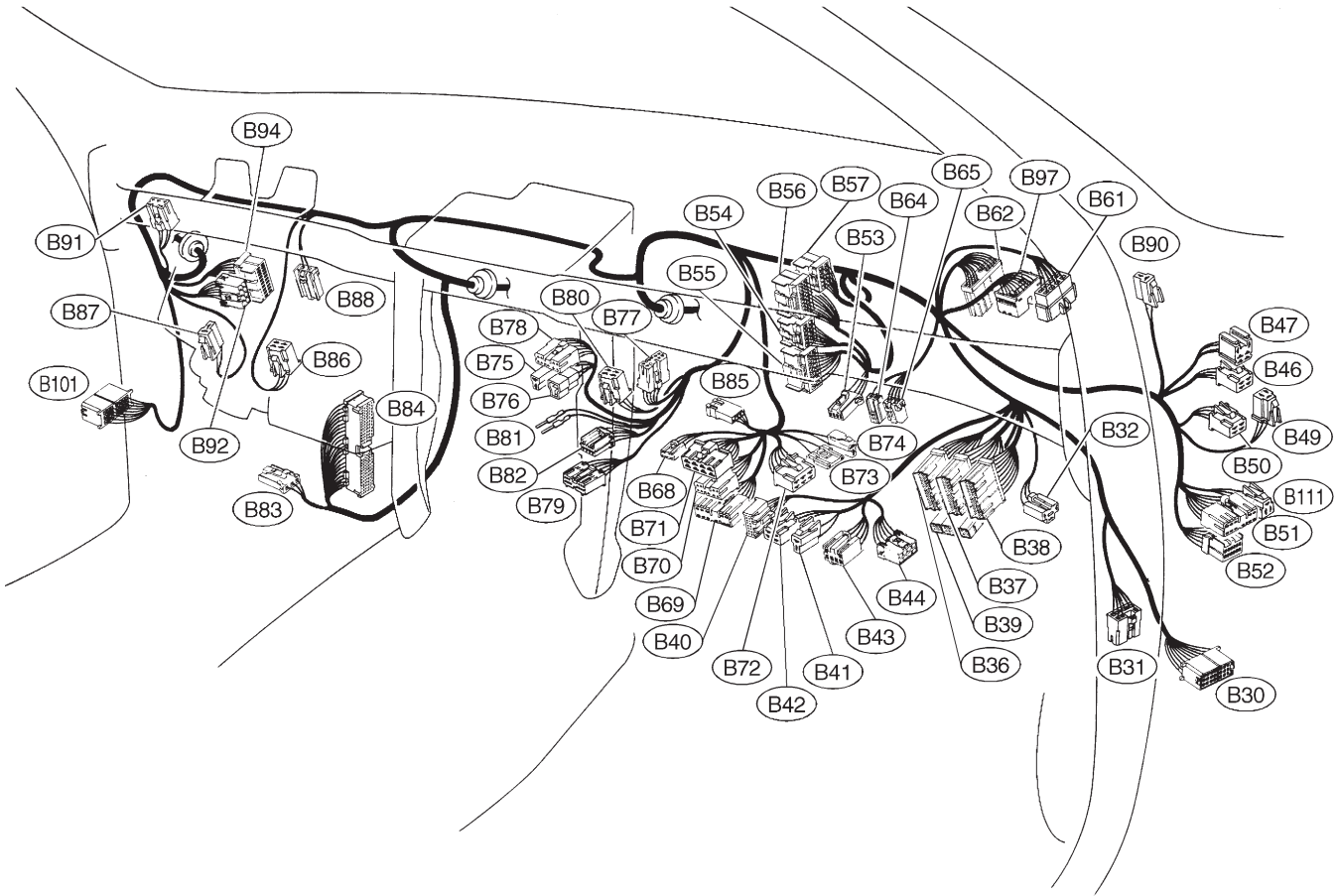
B2M0440

7. BULKHEAD WIRING HARNESS (IN COMPARTMENT) (LHD MODEL)



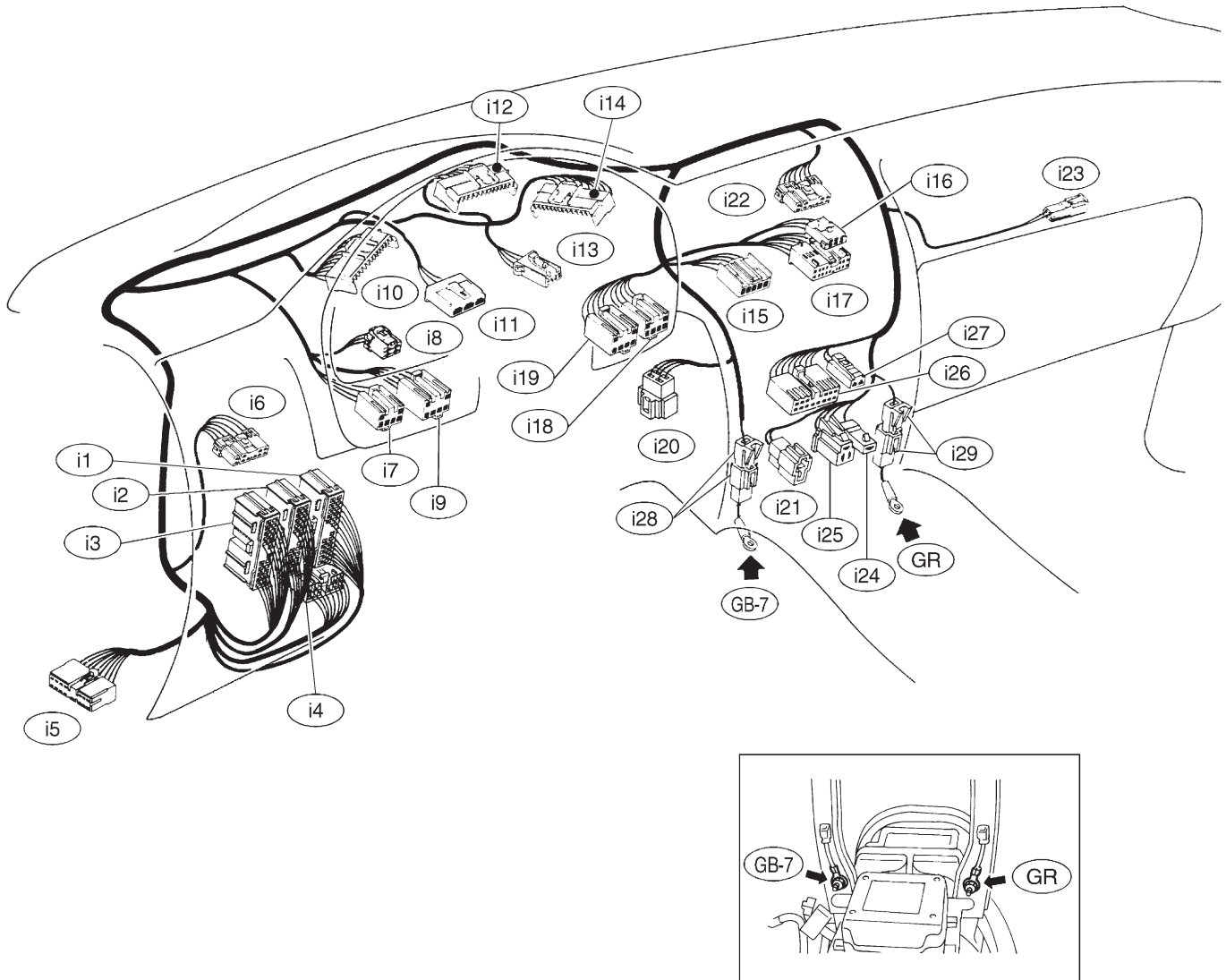
OBD0732

8. BULKHEAD WIRING HARNESS (IN COMPARTMENT) (RHD MODEL)



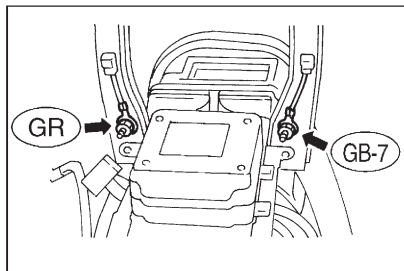
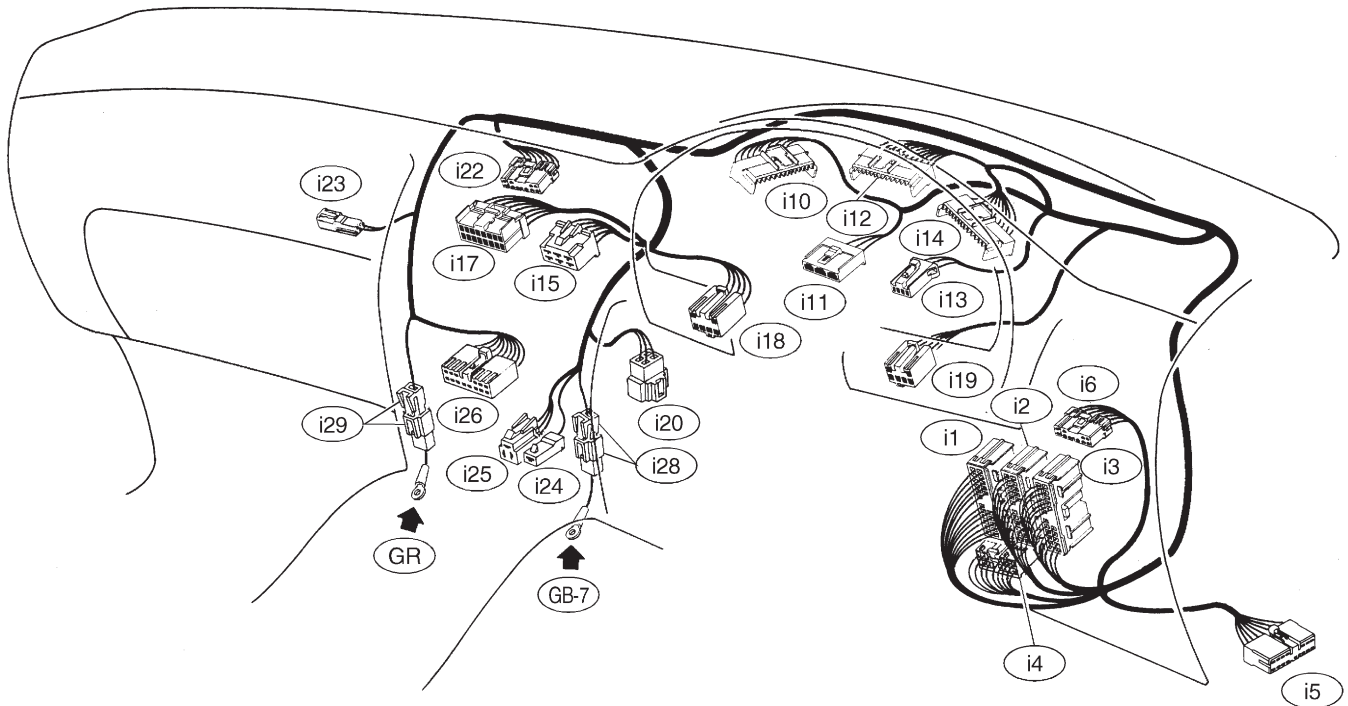
B2M0441

9. INSTRUMENT PANEL WIRING HARNESS AND GROUND POINT (LHD MODEL)



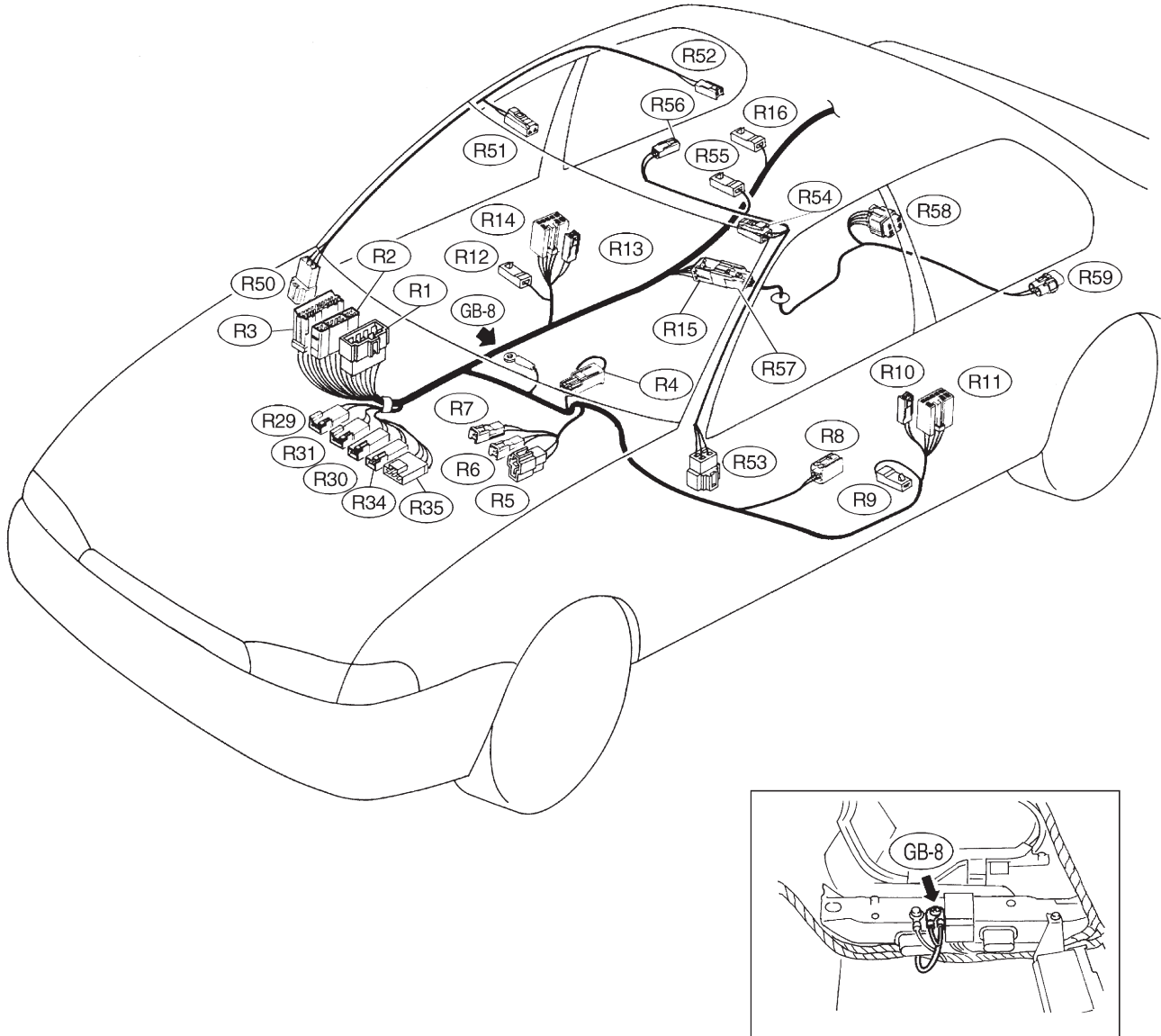
OBD0733

10. INSTRUMENT PANEL WIRING HARNESS AND GROUND POINT (RHD MODEL)



B2M0442

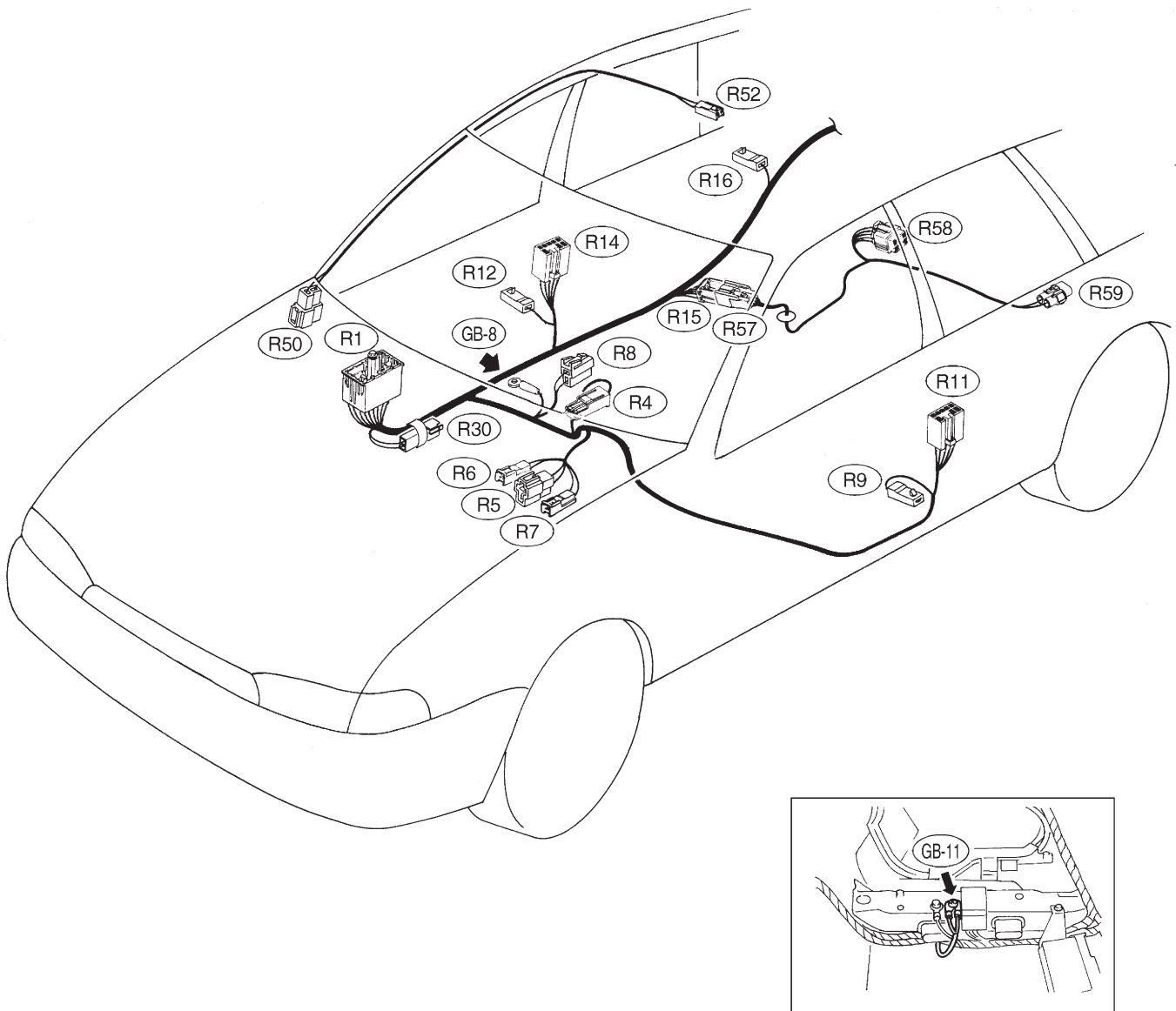
11. REAR WIRING HARNESS AND GROUND POINT (LHD MODEL)



OBD0734

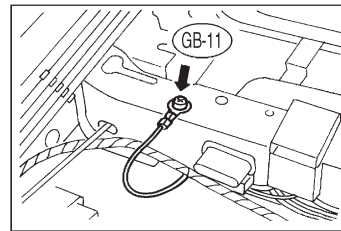
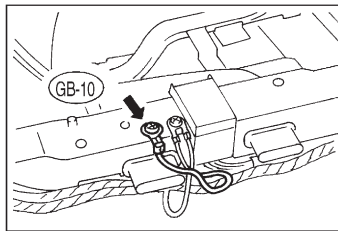
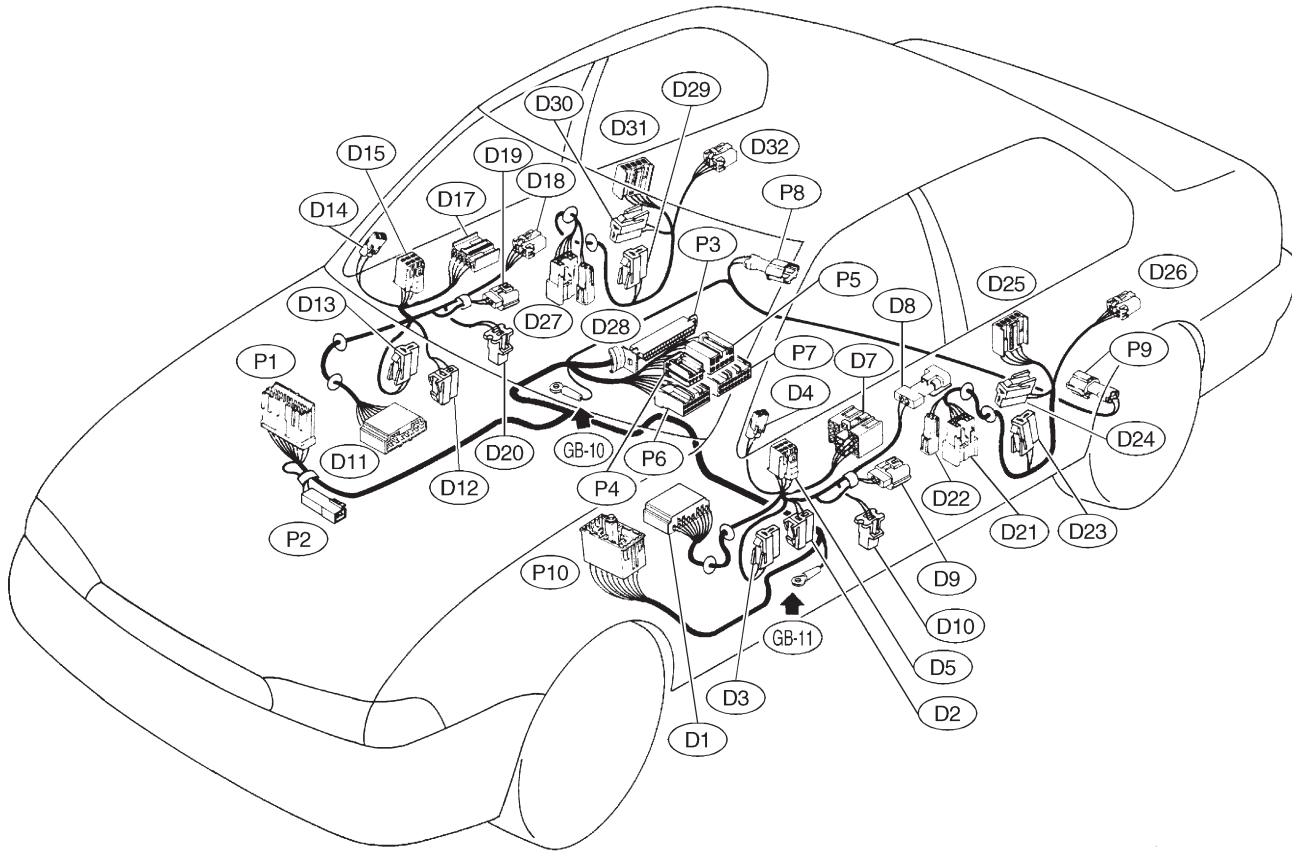


12. REAR WIRING HARNESS AND GROUND POINT (RHD MODEL)



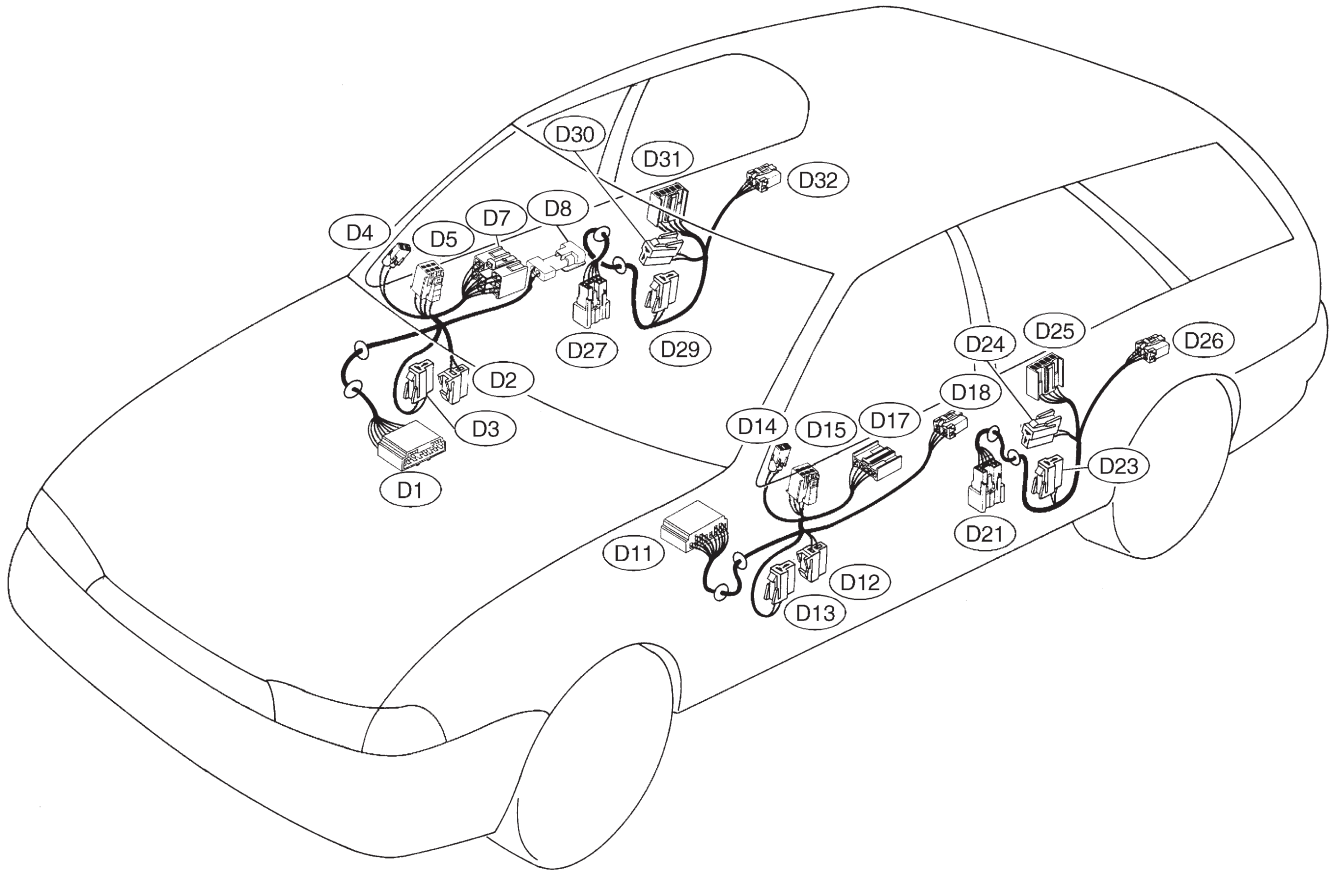
B2M0443

13. FLOOR WIRING HARNESS, DOOR CORD AND GROUND POINT (LHD MODEL)



OBD0735

14. DOOR CORD AND GROUND POINT (RHD MODEL)



B2M0444