



SERVICE BULLETIN

APPLICABILITY 1996 AND 1997 LEGACY SERVICE MANUAL
SUPPLEMENTS

DATE 08-30-96

SUBJECT SERVICE MANUAL CORRECTIONS

Please replace the pages of the following service manual supplements using the chart below.

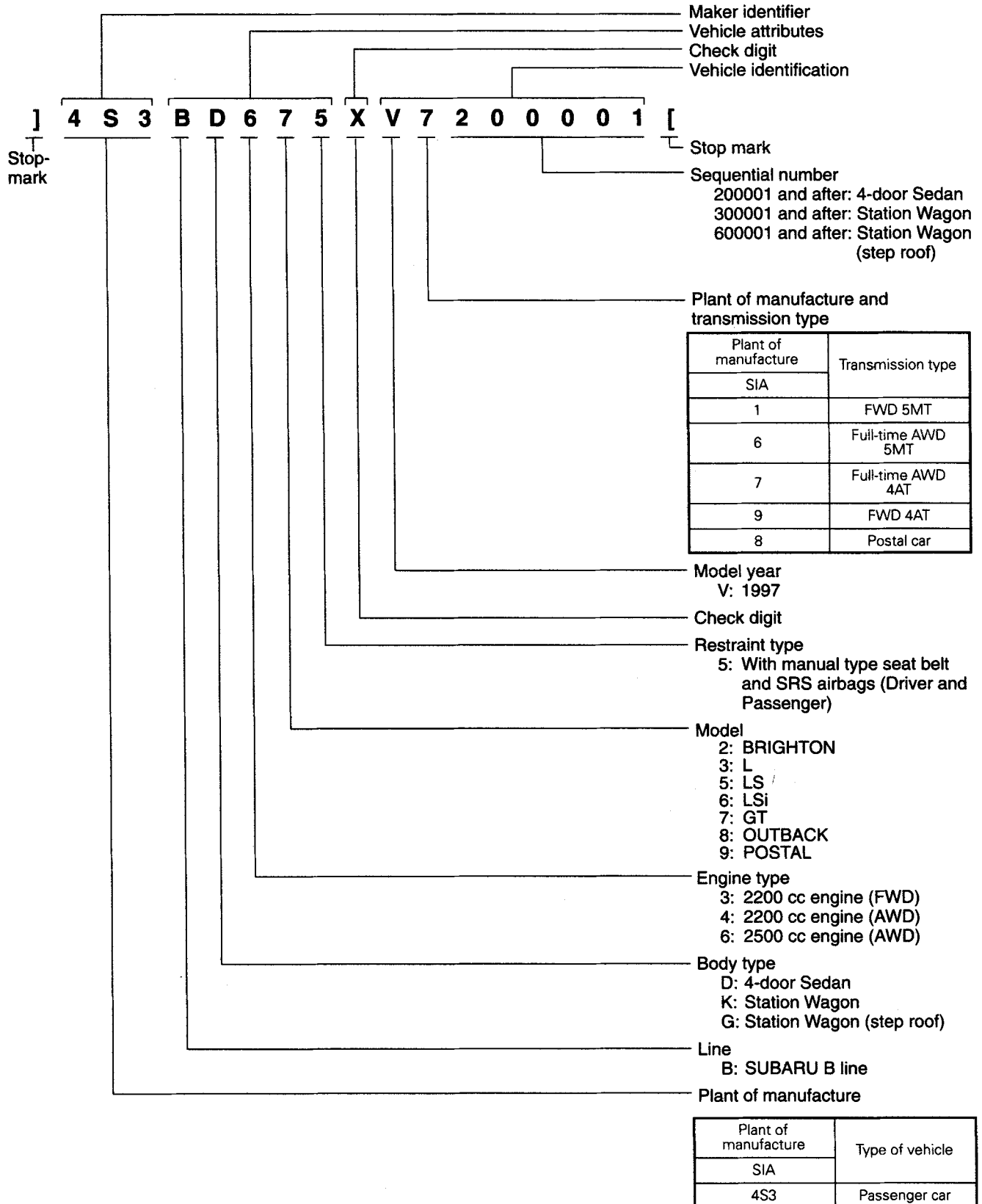
1996 Service Manual Supplement <i>(Enhanced Evaporative Emission Control Equipped Model) - Located in the second half of Volume 5</i>	MSA5T9607A	Volume 5	Page: 0302-1-3, 2
1997 Service Manual Supplement	MSA5T9701A	Volume 6	Page: 0302-1-3, 2
1996 Service Manual Supplement	MSA5T9607A	Volume 5	Page: 0701-2-3, 20

CAUTION

VEHICLE SERVICING PERFORMED BY UNTRAINED PERSONS COULD RESULT IN SERIOUS INJURY TO THOSE PERSONS OR TO OTHERS.

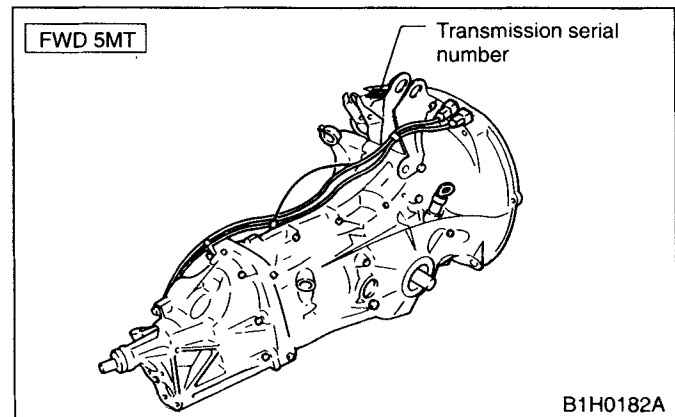
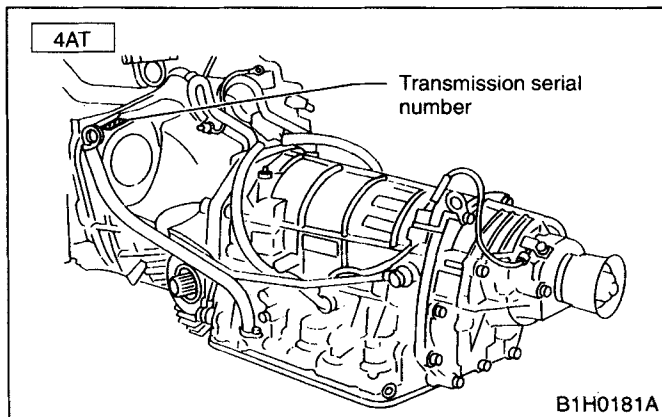
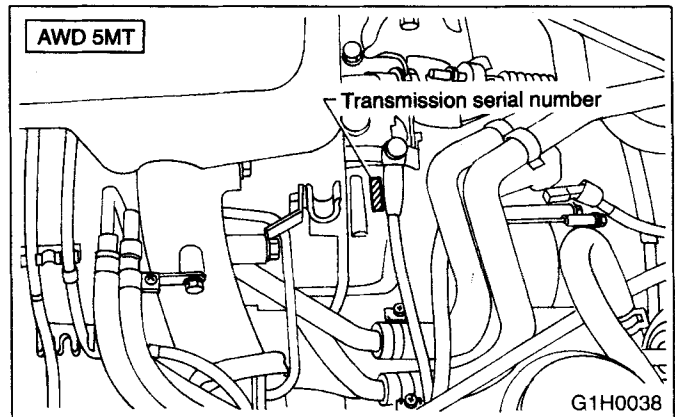
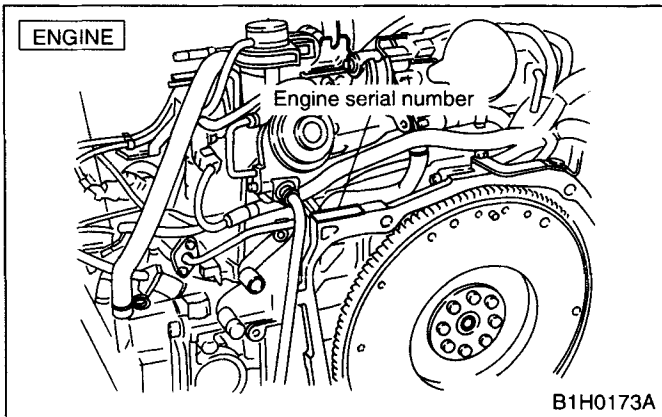
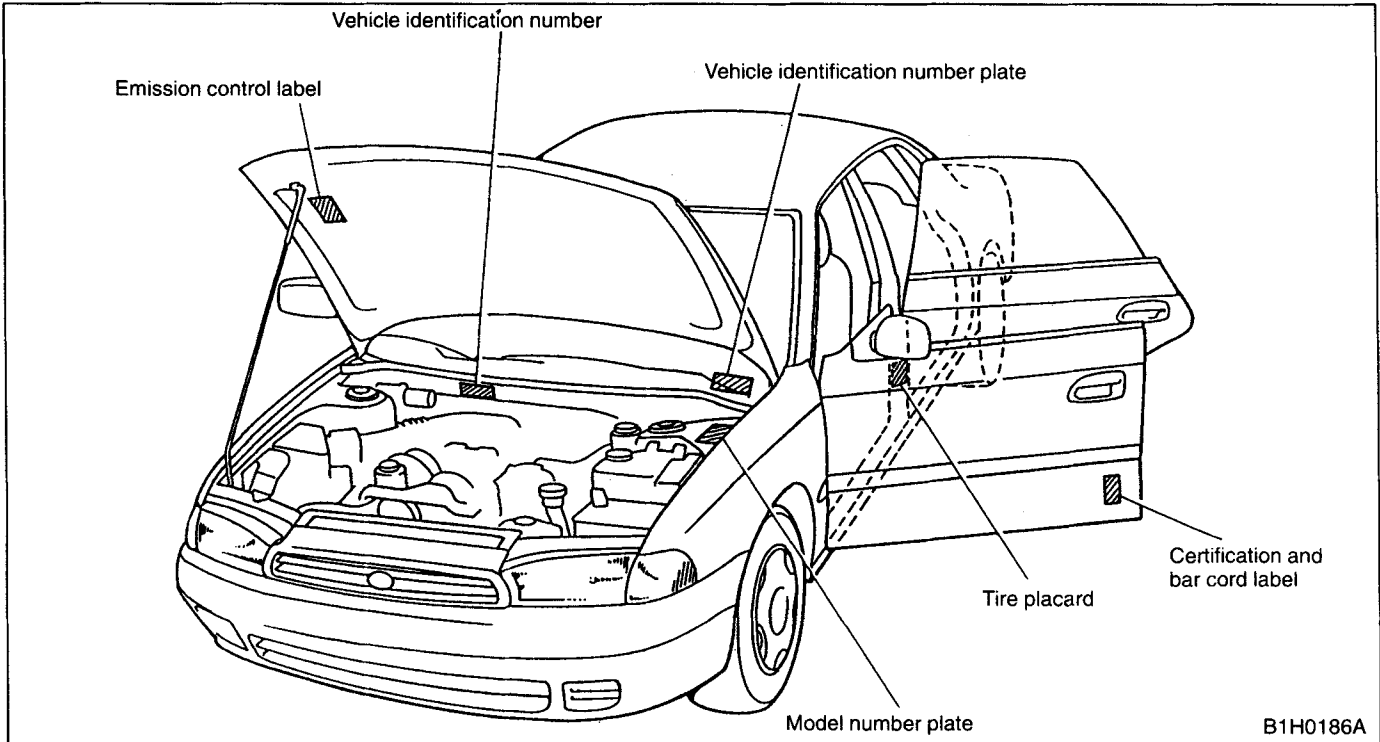
Subaru Service Bulletins are intended for use by professional technicians ONLY. They are written to inform those technicians of conditions that may occur in some vehicles, or to provide information that could assist in the proper servicing of the vehicle. Properly trained technicians have the equipment, tools, safety instructions, and know-how to do the job correctly and safely. If a condition is described, DO NOT assume that this Service Bulletin applies to your vehicle, or that your vehicle will have that condition.

2. THE MEANING OF V.I.N.

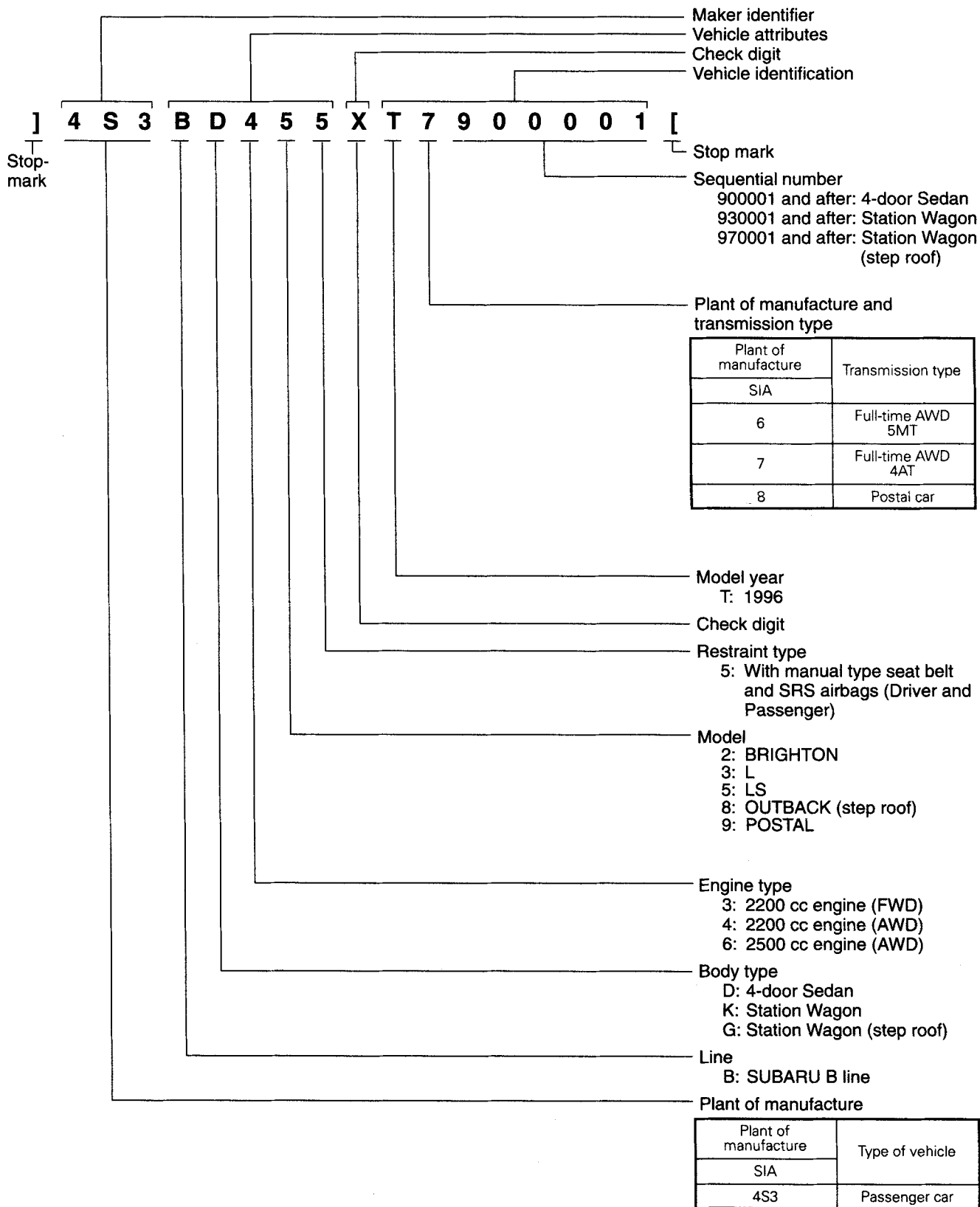


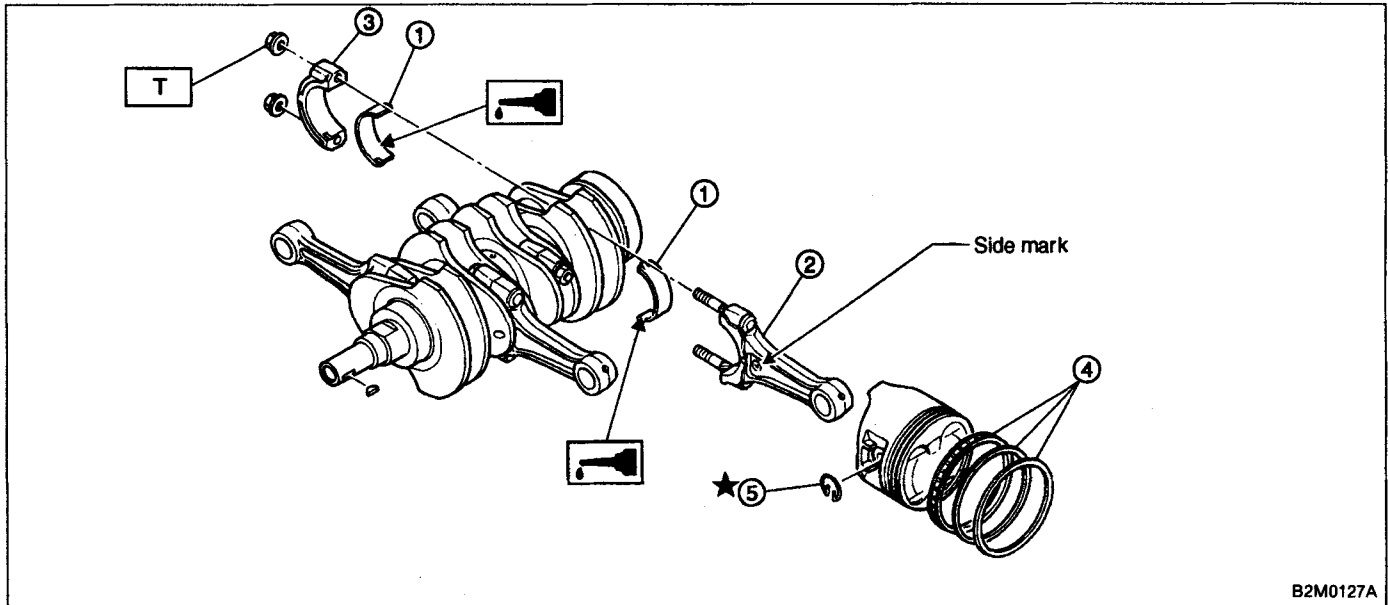
4. Identification Number and Label Locations

Engine, transmission and vehicle identification numbers are used for factory communications such as Technical Information, Service Bulletins and other information.



2. THE MEANING OF V.I.N.



D: ASSEMBLY**1. CRANKSHAFT AND PISTON**

Tightening torque: N·m (kg·m, ft·lb)
T: 44 ± 2 (4.5 ± 0.2, 32.5 ± 1.4)

1) Install connecting rod bearings on connecting rods and connecting rod caps.

CAUTION:

Apply oil to the surfaces of the connecting rod bearings.

2) Install connecting rod on crankshaft.

CAUTION:

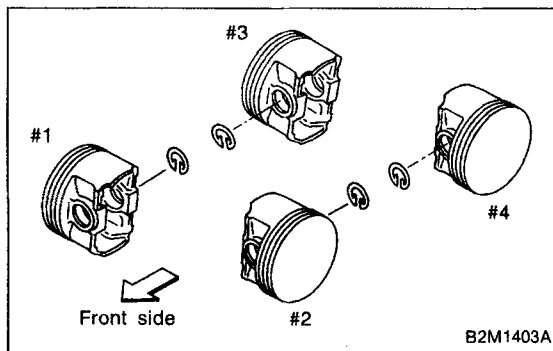
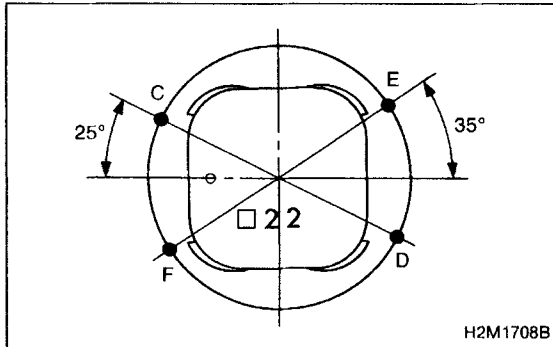
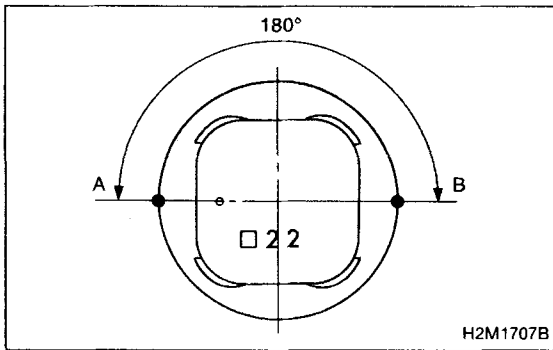
Position each connecting rod with the side marked facing forward.

3) Install connecting rod cap with connecting rod nut. Ensure the arrow on connecting rod cap faces the front during installation.

CAUTION:

● **Each connecting rod has its own mating cap. Make sure that they are assembled correctly by checking their matching number.**

● **When tightening the connecting rod nuts, apply oil on the threads.**



4) Installation of piston rings and oil ring

- (1) Install oil ring spacer, upper rail and lower rail in this order by hand. Then install second ring and top ring with a piston ring expander.
- (2) Position the top ring gap at A or B in the Figure.
- (3) Position the second ring gap at 180° on the reverse side for the top ring gap.

- (4) Position the upper rail gap at C or D in the Figure.
- (5) Position the expander gap at 180° of the reverse side for the upper rail gap.
- (6) Position the lower rail gap at E or F in the Figure.

CAUTION:

- Ensure ring gaps do not face the same direction.
- Ensure ring gaps are not within the piston skirt area.

5) Install circlip.

Install circlips in piston holes located opposite service holes in cylinder block, when positioning all pistons in the corresponding cylinders.

CAUTION:

Use new circlips.

NOTE:

Piston front mark "○" facer toward front of engine.