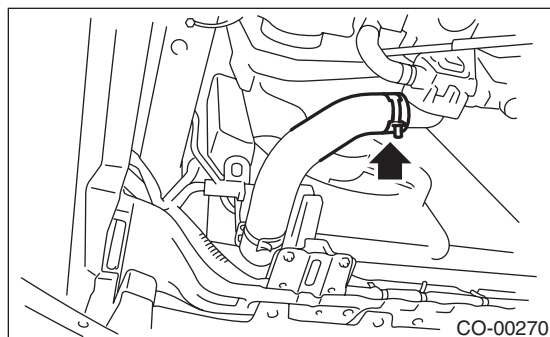


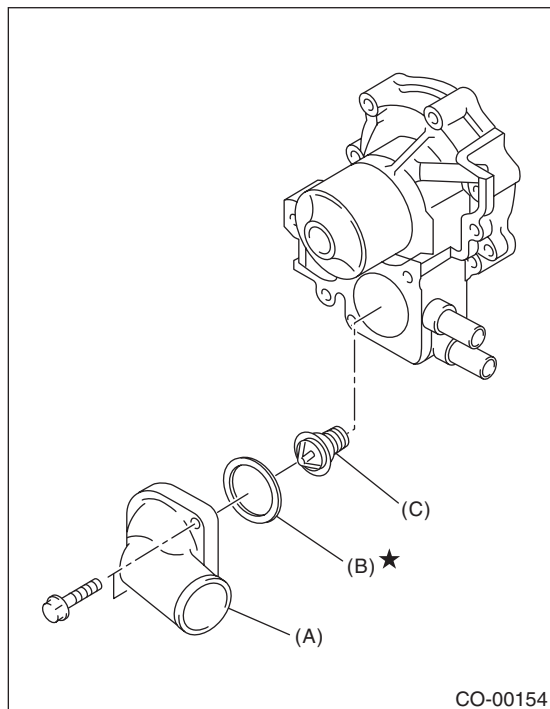
## 5. Thermostat

### A: REMOVAL

- 1) Set the vehicle on a lift.
- 2) Lift up the vehicle.
- 3) Remove the under cover.
- 4) Drain engine coolant completely. <Ref. to CO(H4SO)-12, DRAINING OF ENGINE COOLANT, REPLACEMENT, Engine Coolant.>
- 5) Remove the front exhaust pipe. <Ref. to EX(H4SO)-4, REMOVAL, Front Exhaust Pipe.>
- 6) Disconnect the radiator outlet hose from thermostat cover.



- 7) Remove the thermostat cover and gasket, then remove the thermostat.



- (A) Thermostat cover
- (B) Gasket
- (C) Thermostat

### B: INSTALLATION

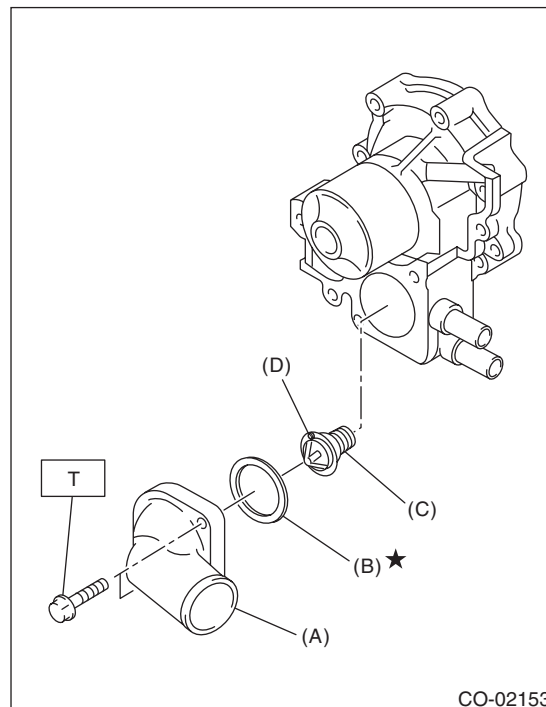
- 1) Install a gasket to thermostat, and install the thermostat and gasket to water pump as a unit. Then, install the thermostat cover.

#### NOTE:

- Use a new gasket.
- The thermostat must be installed with the jiggle pin facing upward.

#### Tightening torque:

**12 N·m (1.2 kgf-m, 8.9 ft-lb)**



- (A) Thermostat cover
- (B) Gasket
- (C) Thermostat
- (D) Jiggle pin

- 2) Connect the radiator outlet hose to thermostat cover.
- 3) Install the front exhaust pipe. <Ref. to EX(H4SO)-5, INSTALLATION, Front Exhaust Pipe.>
- 4) Install the under cover.
- 5) Lower the vehicle.
- 6) Fill engine coolant. <Ref. to CO(H4SO)-12, FILLING OF ENGINE COOLANT, REPLACEMENT, Engine Coolant.>

### C: INSPECTION

Replace the thermostat if the valve does not close completely at an ambient temperature or if the following test shows unsatisfactory results.

- Inspection method

Immerse the thermostat and a thermometer in water. Raise water temperature gradually, and measure the temperature and valve lift when the valve begins to open and when the valve is fully opened. During the test, agitate the water for even temperature distribution. The measured value should meet the specification.

NOTE:

- Leave the thermostat in the boiling water for five minutes or more before measuring valve lift.
- Hold the thermostat with a wire or the like to avoid contacting with container bottom.

**Opening start temperature:**

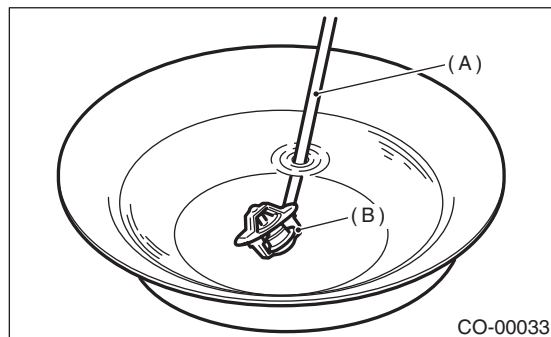
**80 — 84°C (176 — 183°F)**

**Full open temperature:**

**95°C (203°F)**

**Valve lift:**

**9.0 mm (0.354 in) or more**



(A) Thermometer

(B) Thermostat