

General Description

FUEL INJECTION (FUEL SYSTEMS)

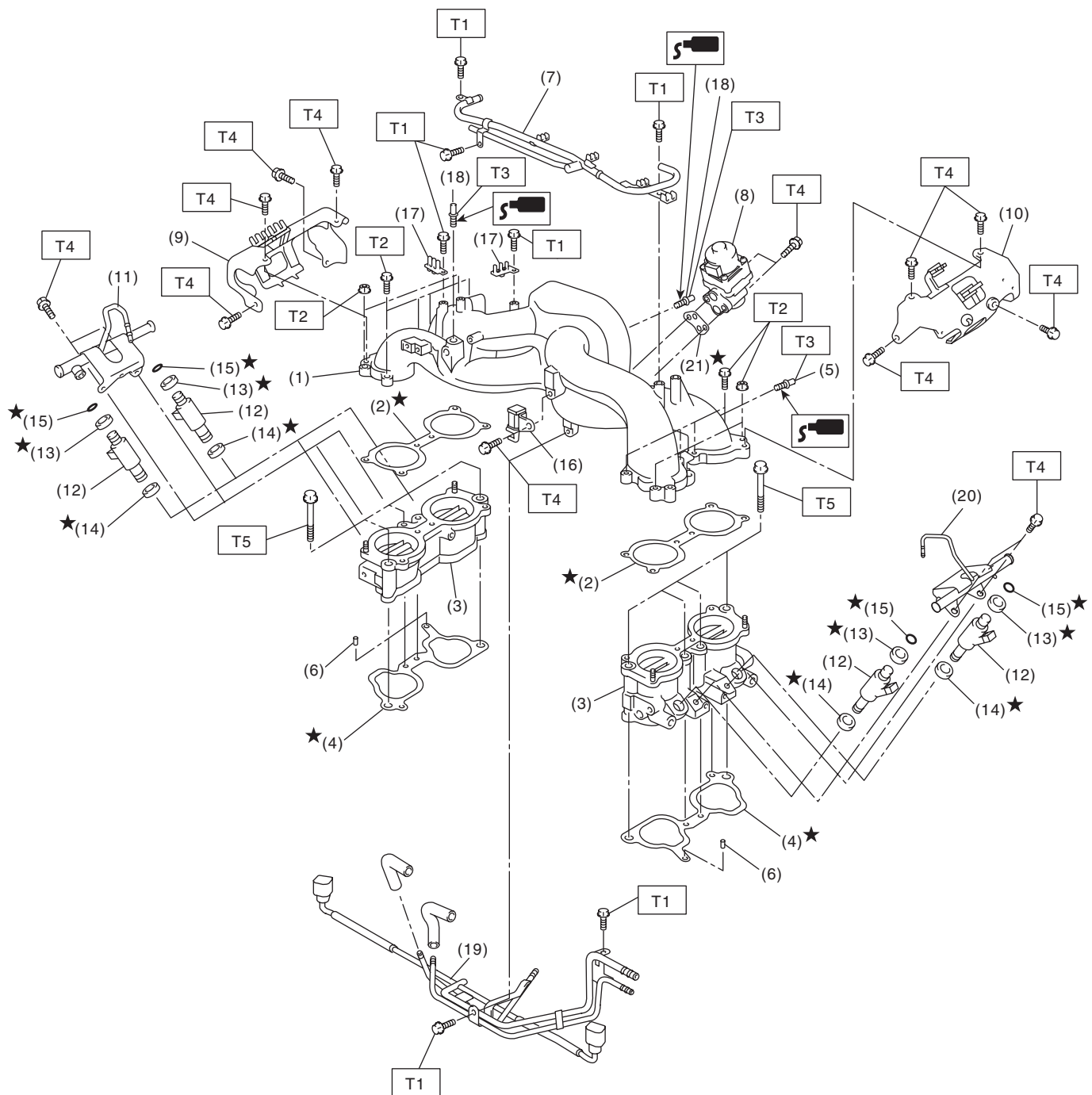
1. General Description

A: SPECIFICATION

Contents		Specification
Fuel tank	Capacity	64 ℓ (16.9 US gal, 14.1 Imp gal)
	Install locations	Under rear seat
Fuel pump	Type	Impeller
	Shutoff discharge pressure	550 — 850 kPa (5.6 — 8.7 kg/cm ² , 79.7 — 123.2 psi)
	Discharge rate	125 ℓ (33 US gal, 27.5 Imp gal)/h or more. [12 V at 300 kPa (3.06 kg/cm ² , 43.5 psi)]
Fuel filter		Intank type

B: COMPONENT

1. INTAKE MANIFOLD



FU-03199

General Description

FUEL INJECTION (FUEL SYSTEMS)

- | | | |
|-----------------------------|-----------------------------------|----------------------------|
| (1) Intake manifold | (11) Fuel injector pipe RH | (20) Fuel injector pipe LH |
| (2) Gasket | (12) Fuel injector | (21) Gasket |
| (3) Intake manifold (Lower) | (13) O-ring | |
| (4) Gasket | (14) O-ring | |
| (5) Nipple | (15) O-ring | |
| (6) Guide pin | (16) Purge control solenoid valve | |
| (7) PCV pipe | (17) Plug cord holder | |
| (8) EGR valve | (18) Nipple | |
| (9) Fuel pipe protector RH | (19) Fuel pipe ASSY | |
| (10) Fuel pipe protector LH | | |

Tightening torque: N·m (kgf-m, ft-lb)

T1: 6.4 (0.65, 4.7)

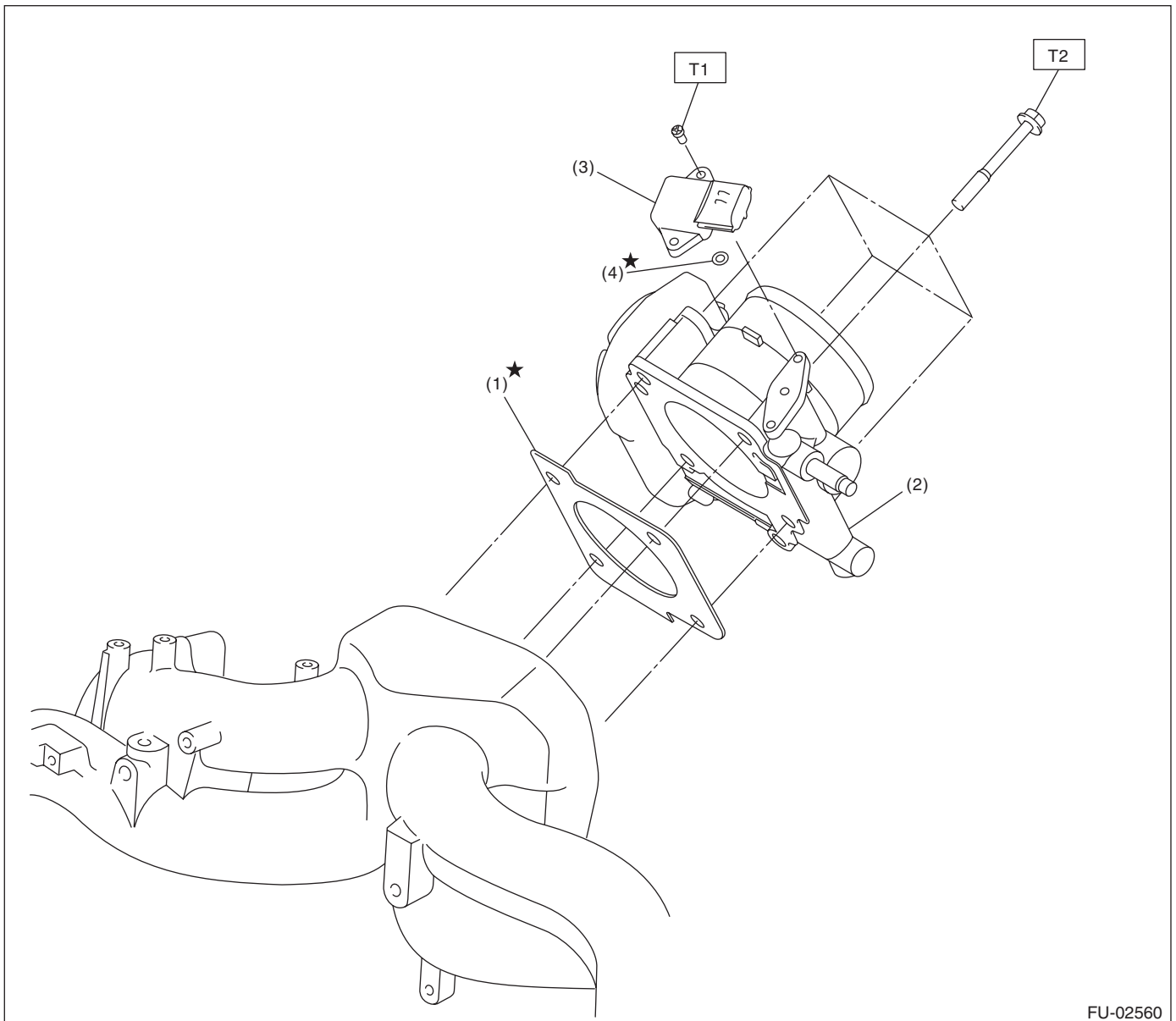
T2: 8.75 (0.89, 6.5)

T3: 17 (1.7, 12.5)

T4: 19 (1.9, 14)

T5: 25 (2.5, 18)

2. AIR INTAKE SYSTEM



FU-02560

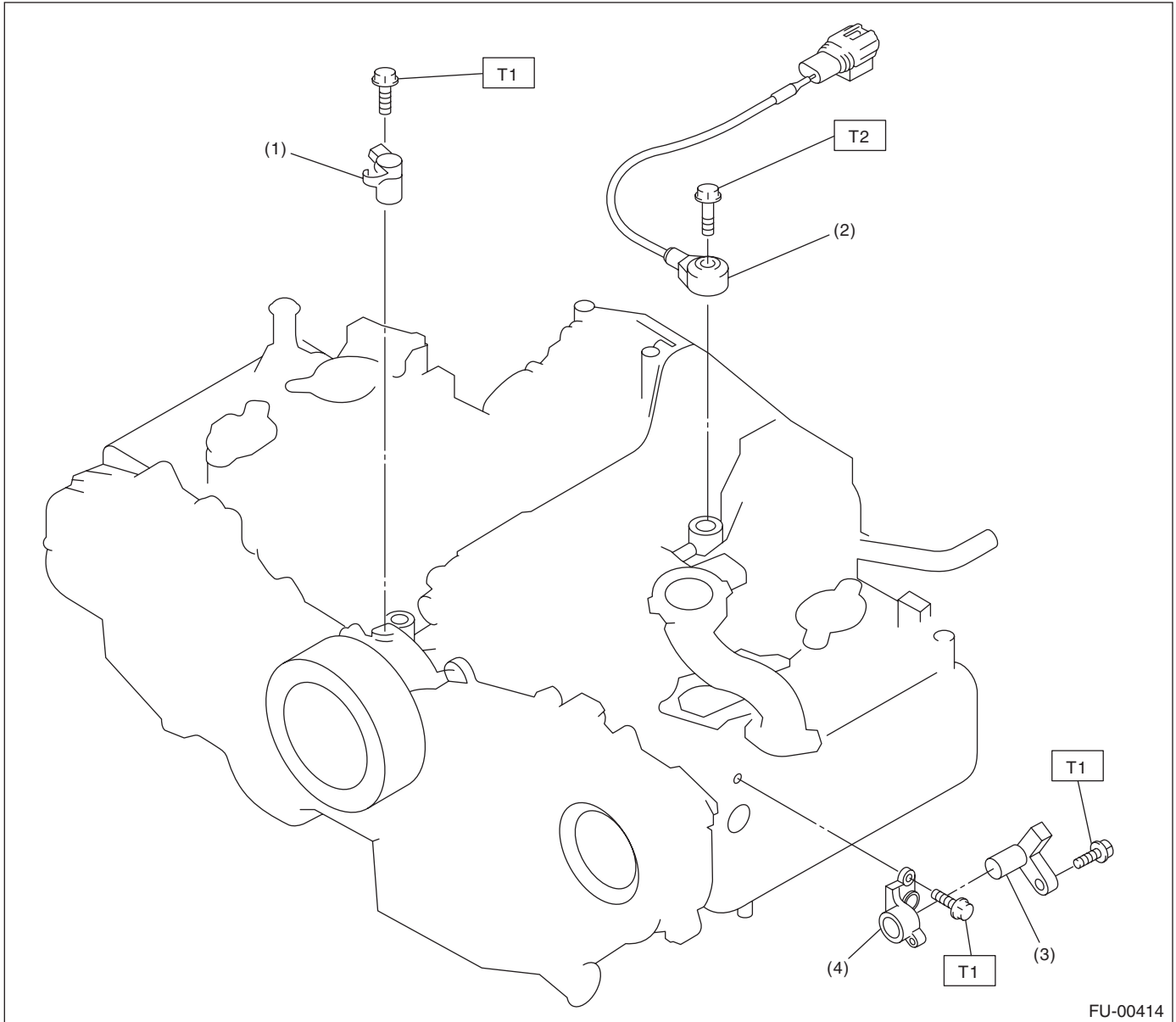
- | | |
|---------------------------------------|------------|
| (1) Gasket | (4) O-ring |
| (2) Throttle body | |
| (3) Manifold absolute pressure sensor | |

Tightening torque: N·m (kgf-m, ft-lb)

T1: 2.0 (0.20, 1.5)

T2: 8 (0.8, 5.9)

3. CRANKSHAFT POSITION, CAMSHAFT POSITION AND KNOCK SENSORS



FU-00414

- (1) Crankshaft position sensor
- (2) Knock sensor
- (3) Camshaft position sensor

- (4) Camshaft position sensor support

Tightening torque: N·m (kgf-m, ft-lb)

T1: 6.4 (0.65, 4.7)

T2: 24 (2.4, 17.4)

FUEL INJECTION (FUEL SYSTEMS)

This exploded view diagram illustrates the assembly of a car engine and transmission. The components are numbered 1 through 30, with specific torque specifications (T1, T2, T3, T4) and assembly notes (marked with a star) provided for various parts.

Engine Components:

- 1:** Engine block
- 2:** Intake manifold
- 3:** Exhaust manifold
- 4:** Fuel line
- 5:** Fuel filter
- 6:** Fuel pump
- 7:** Valve cover
- 8:** Valve cover gasket
- 9:** Valve cover bolt (marked with a star)
- 10:** Valve cover nut
- 11:** Valve cover cap
- 12:** Valve cover cap gasket
- 13:** Valve cover cap (marked with a star)
- 14:** Intake pipe
- 15:** Intake pipe gasket
- 16:** Intake pipe nut
- 17:** Intake pipe bolt
- 18:** Intake pipe nut
- 19:** Intake pipe bracket
- 20:** Intake pipe bracket nut
- 21:** Intake pipe bracket bolt
- 22:** Intake pipe bracket gasket
- 23:** Intake pipe bracket
- 24:** Intake pipe bracket
- 25:** Intake pipe nut
- 26:** Intake pipe nut
- 27:** Intake pipe nut
- 28:** Intake pipe nut
- 29:** Intake pipe
- 30:** Intake pipe

Assembly Notes:

- T1:** Torque specification for valve cover cap bolts.
- T2:** Torque specification for valve cover cap bolts.
- T3:** Torque specification for valve cover cap bolts.
- T4:** Torque specification for valve cover cap bolts.

Star Marked Parts:

- 9:** Valve cover bolt
- 13:** Valve cover cap
- 6:** Fuel pump
- 13:** Valve cover cap

FU(H4SO)-6

General Description

FUEL INJECTION (FUEL SYSTEMS)

(1) Fuel tank	(13) Fuel sub level sensor gasket	(25) Evaporation hose B
(2) Fuel tank band RH	(14) Fuel filler hose	(26) Connector
(3) Fuel tank band LH	(15) Clamp	(27) Evaporation hose C
(4) Delivery tube	(16) Evaporation hose A	(28) Evaporation hose D
(5) Jet pump tube	(17) Clip	(29) Evaporation pipe
(6) Retainer	(18) Evaporation hose F	(30) Evaporation hose E
(7) Fuel pump ASSY	(19) Fuel tank protector LH (Rear)	
(8) Fuel pump upper plate	(20) Stopper RH	
(9) Fuel pump gasket	(21) Stopper LH	
(10) Fuel level sensor	(22) Heat shield cover	
(11) Fuel sub level sensor	(23) Fuel tank protector RH (Front)	
(12) Fuel sub level sensor upper plate	(24) Fuel tank protector LH (Front)	

Tightening torque:N·m (kgf-m, ft-lb)

T1: 4.4 (0.45, 3.2)

T2: 9 (0.9, 6.6)

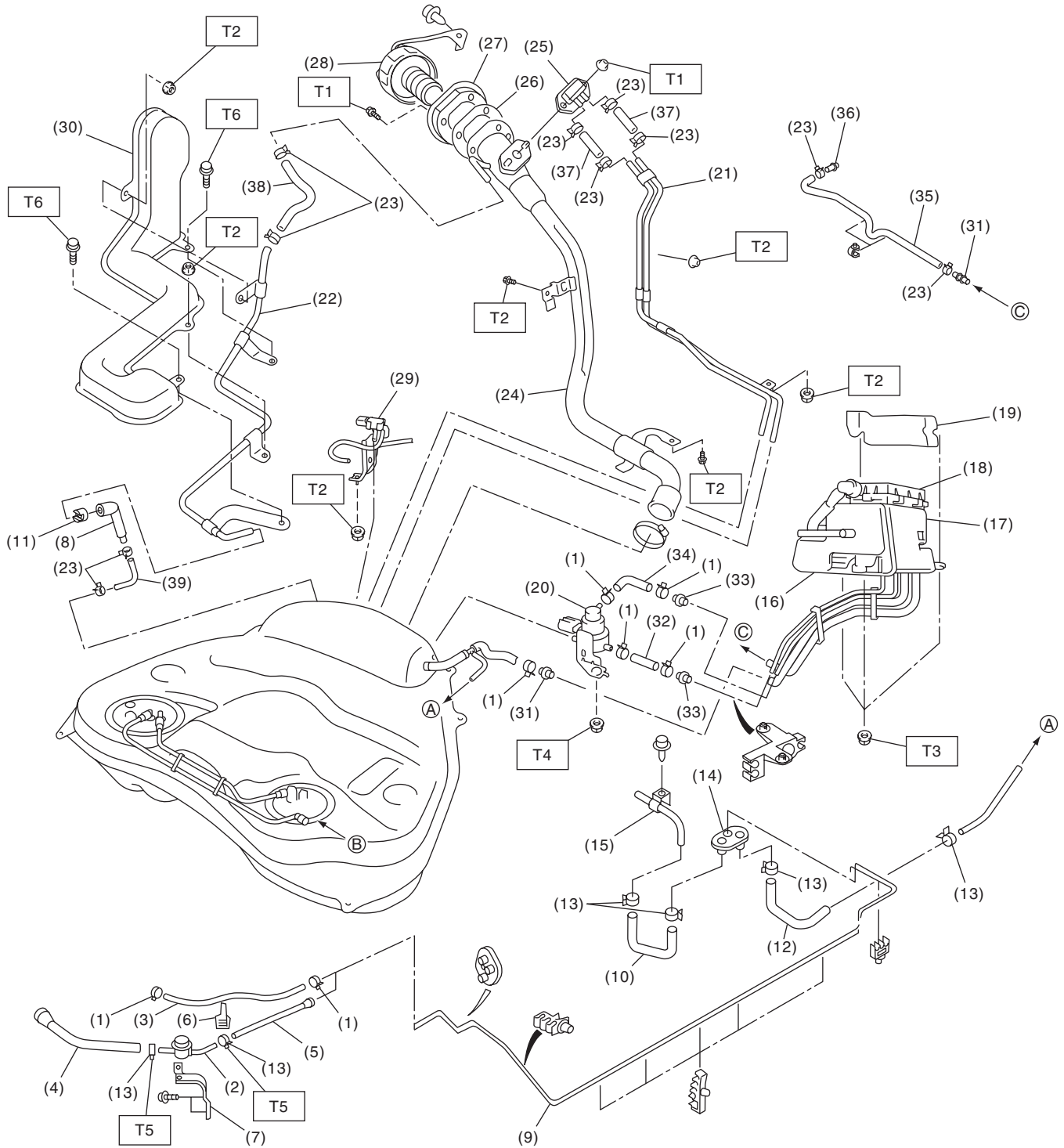
T3: 17.5 (1.78, 12.9)

T4: 33 (3.4, 25)

General Description

FUEL INJECTION (FUEL SYSTEMS)

5. FUEL LINE



FU-03120

General Description

FUEL INJECTION (FUEL SYSTEMS)

(1) Clip	(17) Drain valve	(33) Connector B
(2) Fuel damper valve	(18) Drain filter	(34) Canister hose B
(3) Evaporation hose A	(19) Canister protector	(35) Drain hose
(4) Fuel delivery hose A	(20) Pressure control solenoid valve	(36) Drain hose connector
(5) Fuel delivery hose B	(21) Evaporation pipe A	(37) Evaporation hose C
(6) Clip	(22) Evaporation pipe B	(38) Evaporation hose D
(7) Bracket	(23) Clip	(39) Evaporation hose E
(8) Evaporation tube	(24) Fuel filler pipe	
(9) Fuel pipe ASSY A	(25) Shut valve	
(10) Fuel delivery hose C	(26) Gasket	
(11) Retainer	(27) Filler ring	
(12) Evaporation hose B	(28) Fuel filler cap	
(13) Clamp	(29) Fuel tank pressure sensor	
(14) Grommet	(30) Evaporation pipe protector	
(15) Fuel pipe ASSY B	(31) Connector A	
(16) Canister	(32) Canister hose A	

Tightening torque:N·m (kgf-m, ft-lb)

T1: 4.4 (0.45, 3.2)

T2: 7.5 (0.76, 5.5)

T3: 8 (0.8, 5.9)

T4: 17.6 (1.8, 13)

T5: 1.25 (0.13, 0.94)

T6: 1.0 (0.1, 0.7)

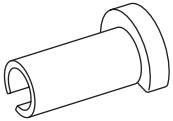
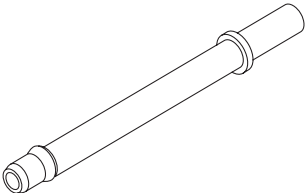
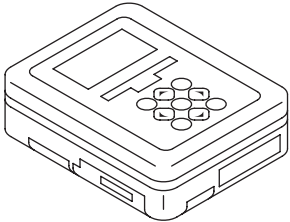
C: CAUTION

- Wear appropriate work clothing, including a cap, protective goggles and protective shoes when performing any work.
- Remove contamination including dirt and corrosion before removal, installation or disassembly.
- Keep the disassembled parts in order and protect them from dust and dirt.
- Before removal, installation or disassembly, be sure to clarify the failure. Avoid unnecessary removal, installation, disassembly and replacement.
- Vehicle components are extremely hot after driving. Be wary of receiving burns from heated parts.
- Be sure to tighten fasteners including bolts and nuts to the specified torque.
- Place shop jacks or rigid racks at the specified points.
- Before disconnecting connectors of sensors or units, be sure to disconnect the ground cable from the battery.
- Place "NO OPEN FLAMES" signs near the working area.
- Prepare a container and cloth to prevent scattering of fuels when performing work where fuels can be spilled. If the fuel spills, wipe it off immediately to prevent from penetrating into floor or flowing out for environmental protection.
- Follow all government and local regulations concerning disposal of refuse when disposing fuel.

General Description

FUEL INJECTION (FUEL SYSTEMS)

D: PREPARATION TOOL

ILLUSTRATION	TOOL NUMBER	DESCRIPTION	REMARKS
 ST42099AE000	42099AE000	CONNECTOR REMOVER	Used for removing the quick connector.
 ST18471AA000	18471AA000	FUEL PIPE ADAPTER	Used for draining fuel.
 ST1B021XU0	1B021XU0	SUBARU SELECT MONITOR III KIT	Used for draining fuel.