

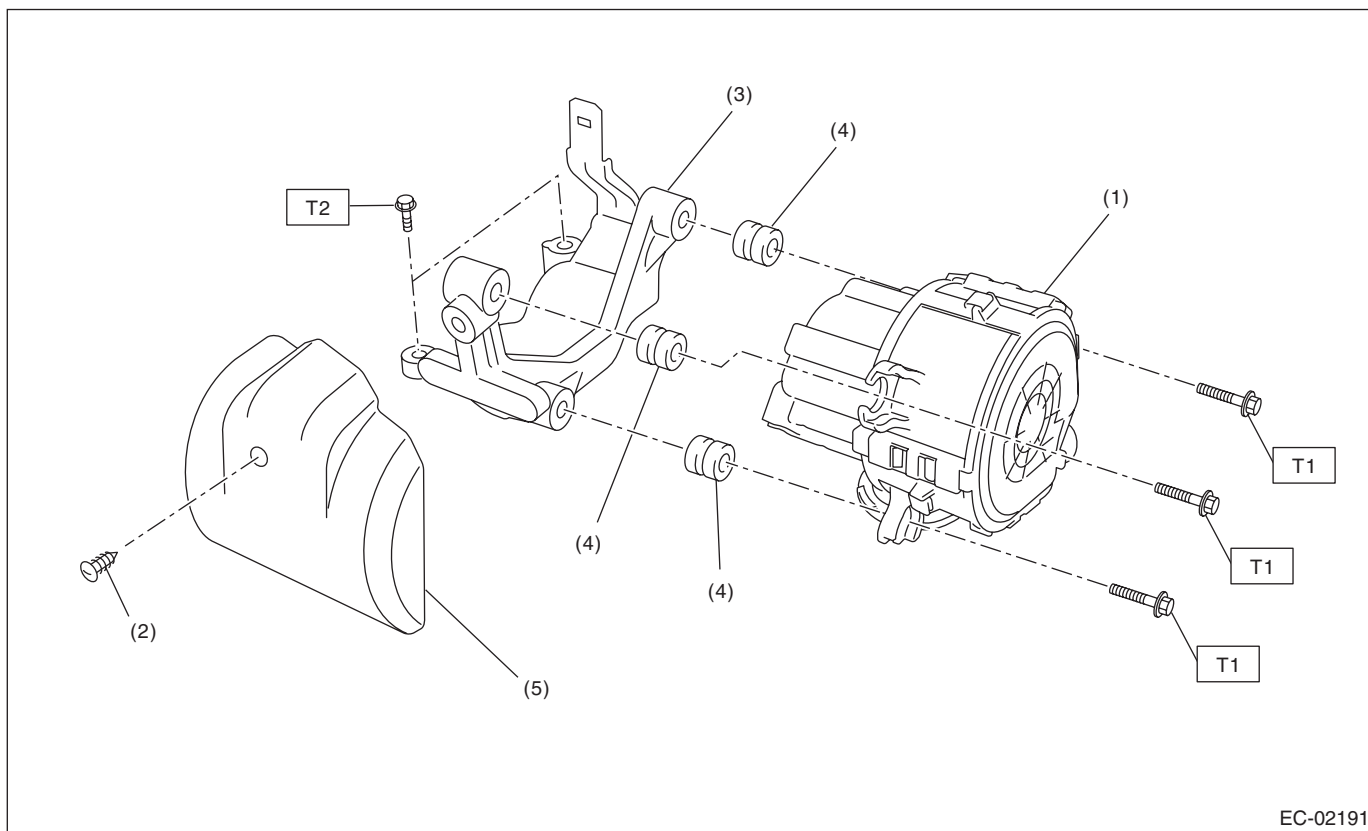
## General Description

EMISSION CONTROL (AUX. EMISSION CONTROL DEVICES)

### 1. General Description

#### A: COMPONENT

##### 1. SECONDARY AIR PUMP



- |                                |                              |
|--------------------------------|------------------------------|
| (1) Secondary air pump         | (4) Bushing                  |
| (2) Clip                       | (5) Secondary air pump cover |
| (3) Secondary air pump bracket |                              |

**Tightening torque: N·m (kgf-m, ft-lb)**

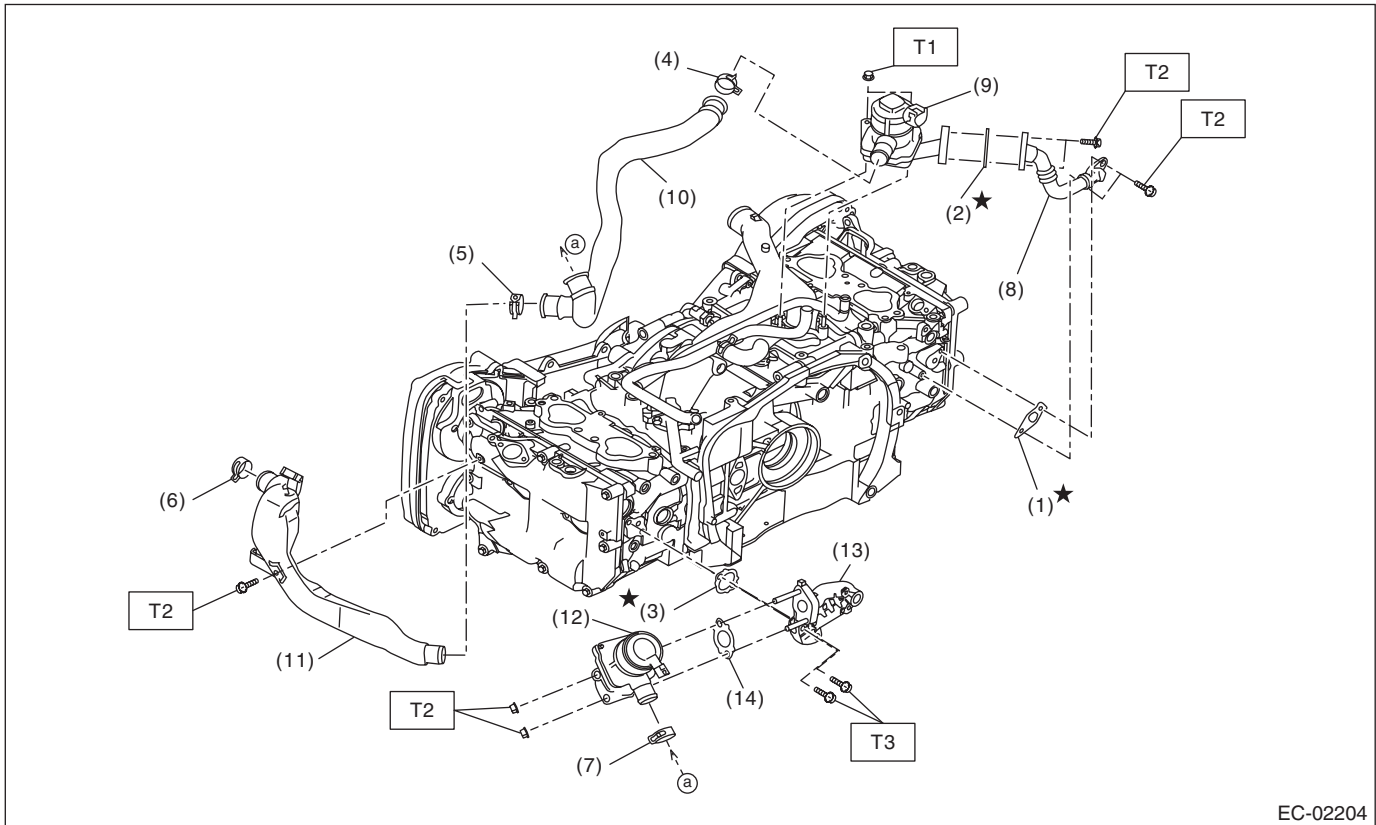
**T1: 6.4 (0.65, 4.7)**

**T2: 19 (1.9, 14)**

# General Description

EMISSION CONTROL (AUX. EMISSION CONTROL DEVICES)

## 2. SECONDARY AIR COMBINATION VALVE



EC-02204

- |                           |   |
|---------------------------|---|
| (1) Gasket                | (9) Secondary air combination valve RH  |
| (2) Gasket                | (10) Air duct A                         |
| (3) Gasket                | (11) Air duct B                         |
| (4) Clamp                 | (12) Secondary air combination valve LH |
| (5) Clamp                 | (13) Secondary air pipe LH              |
| (6) Clamp                 | (14) Gasket                             |
| (7) Clamp                 |   |
| (8) Secondary air pipe RH |   |

**Tightening torque: N·m (kgf-m, ft-lb)**

**T1: 6.4 (0.65, 4.7)**

**T2: 9 (0.9, 6.6)**

**T3: 19 (1.9, 14)**

### B: CAUTION

- Wear appropriate work clothing, including a cap, protective goggles and protective shoes when performing any work.
- Remove contamination including dirt and corrosion before removal, installation or disassembly.
- Keep the disassembled parts in order and protect them from dust and dirt.
- Before removal, installation or disassembly, be sure to clarify the failure. Avoid unnecessary removal, installation, disassembly and replacement.
- Vehicle components are extremely hot after driving. Be wary of receiving burns from heated parts.
- Be sure to tighten fasteners including bolts and nuts to the specified torque.
- Place shop jacks or rigid racks at the specified points.
- Before disconnecting connectors of sensors or units, be sure to disconnect the ground cable from the battery.

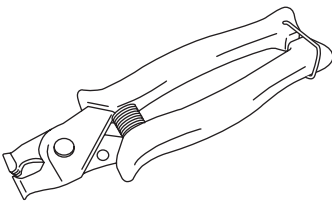
## General Description

EMISSION CONTROL (AUX. EMISSION CONTROL DEVICES)

---

### C: PREPARATION TOOL

#### 1. SPECIAL TOOL

ILLUSTRATION	TOOL NUMBER	DESCRIPTION	REMARKS
  ST18353AA000	18353AA000	CLAMP PLIERS	<ul style="list-style-type: none"><li>• Used for removing and installing the PCV hose.</li><li>• This is a general tool made by the French company CAILLAU. (code) 54.0.000.205</li></ul> To make this easier to obtain in the same way as genuine Subaru parts, it has been provided with a tool number as an ST.