

Purge Control Solenoid Valve

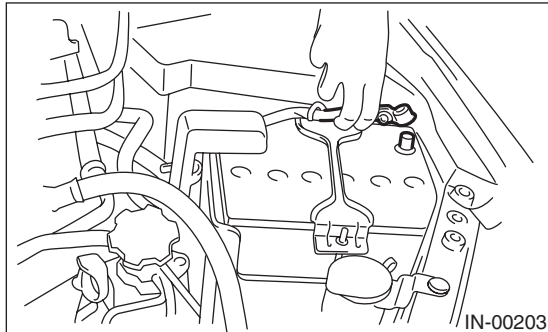
EMISSION CONTROL (AUX. EMISSION CONTROL DEVICES)

5. Purge Control Solenoid Valve

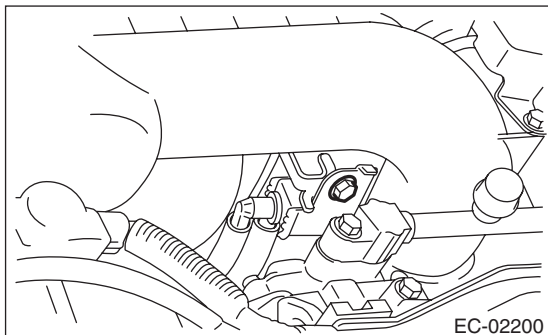
A: REMOVAL

1. PURGE CONTROL SOLENOID VALVE 1

- 1) Remove the collector cover.
- 2) Disconnect the ground cable from the battery.



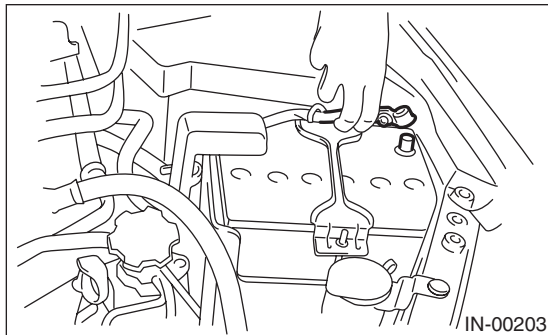
- 3) Remove the bolts that attach the purge control solenoid valve 1 to the intake manifold. Then disconnect the connector from the purge control solenoid valve 1.



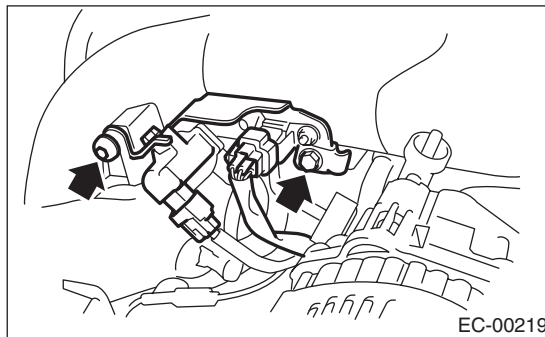
- 4) Disconnect the evaporation hose from the intake manifold and fuel pipe assembly.

2. PURGE CONTROL SOLENOID VALVE 2

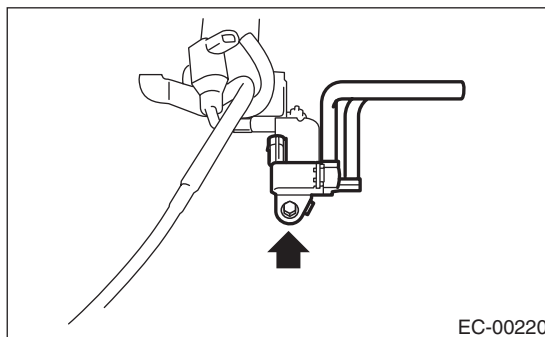
- 1) Remove the collector cover.
- 2) Disconnect the ground cable from the battery.



- 3) Remove the solenoid valve bracket assembly from intake manifold.



- 4) Disconnect the connector from purge control solenoid valve 2.
- 5) Disconnect the evaporation hose from the intake duct and fuel pipe assembly.
- 6) Remove the purge control solenoid valve 2 from the solenoid valve bracket assembly.



Purge Control Solenoid Valve

EMISSION CONTROL (AUX. EMISSION CONTROL DEVICES)

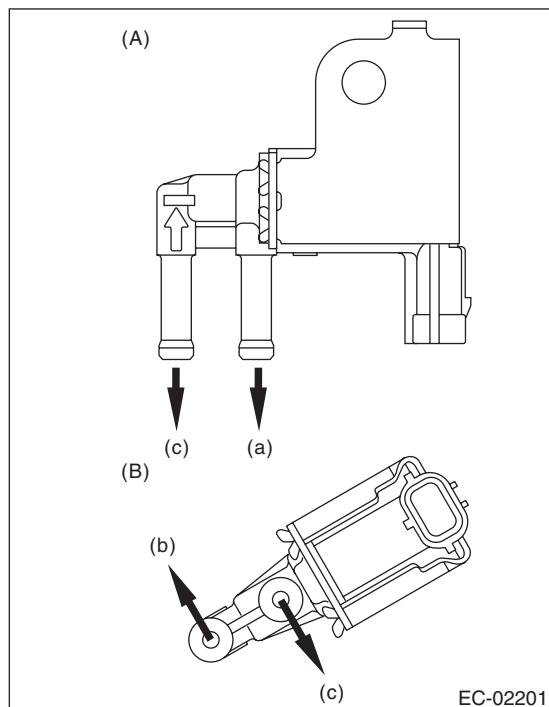
B: INSTALLATION

1. PURGE CONTROL SOLENOID VALVE 1

Install in the reverse order of removal.

NOTE:

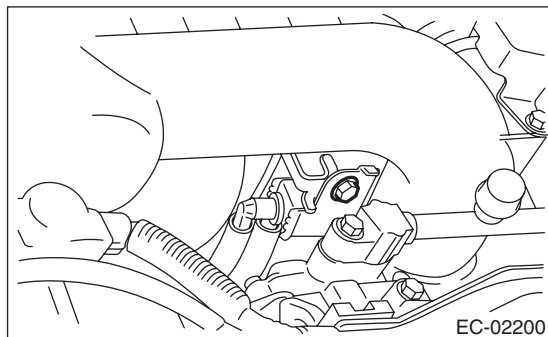
Connect the evaporation hose as shown in the figure.



- (A) Purge Control Solenoid Valve 1
- (B) Purge Control Solenoid Valve 2
- (a) To intake manifold
- (b) To intake duct
- (c) To fuel pipe

Tightening torque:

6.4 N·m (0.65 kgf-m, 4.7 ft-lb)

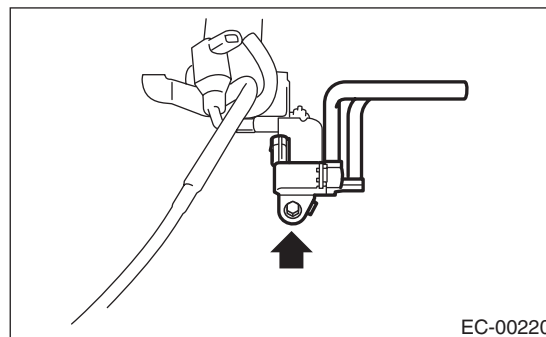


2. PURGE CONTROL SOLENOID VALVE 2

Install in the reverse order of removal.

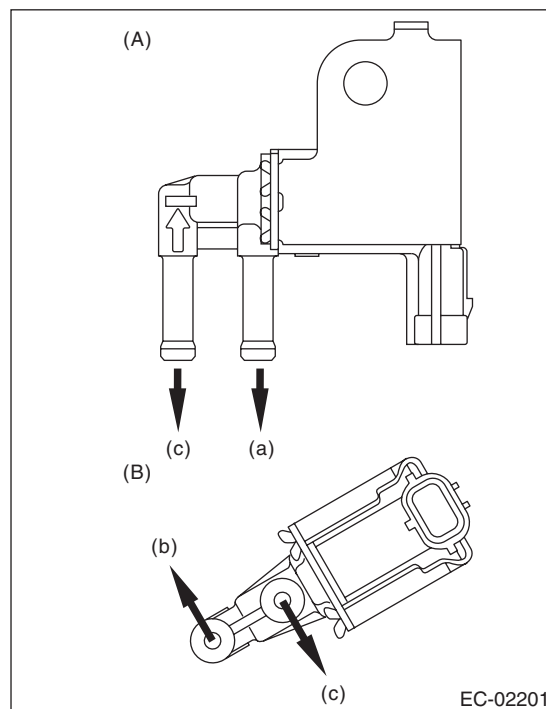
Tightening torque:

19 N·m (1.94 kgf-m, 13.7 ft-lb)



NOTE:

Connect the evaporation hose as shown in the figure.



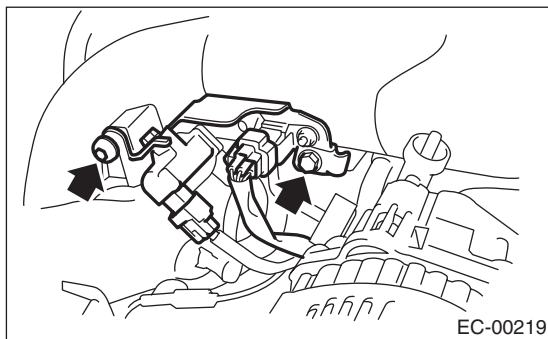
- (A) Purge Control Solenoid Valve 1
- (B) Purge Control Solenoid Valve 2
- (a) To intake manifold
- (b) To intake duct
- (c) To fuel pipe

Purge Control Solenoid Valve

EMISSION CONTROL (AUX. EMISSION CONTROL DEVICES)

Tightening torque:

19 N·m (1.94 kgf-m, 13.7 ft-lb)



C: INSPECTION

Make sure the hoses are not cracked or loose.