

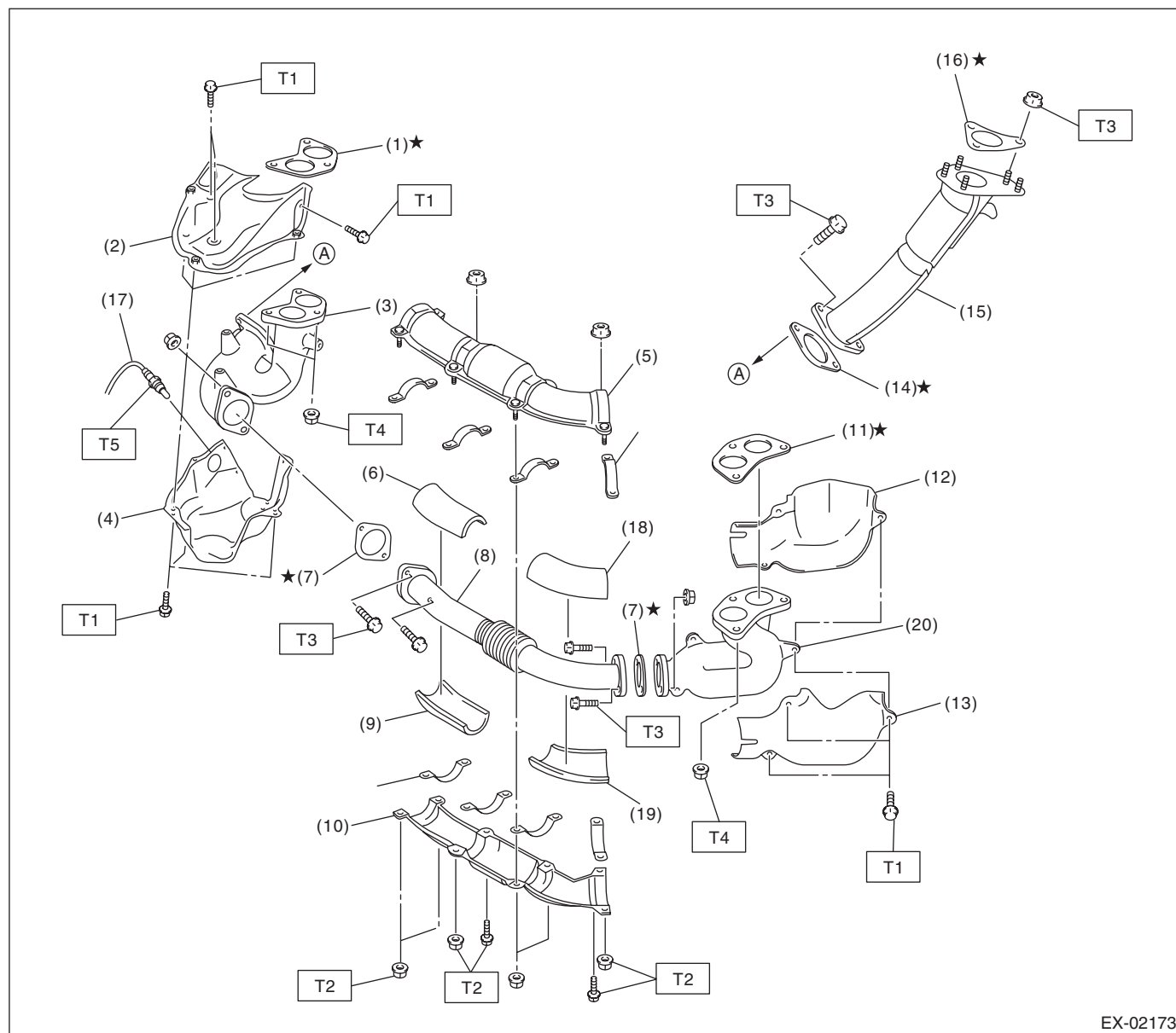
General Description

EXHAUST

1. General Description

A: COMPONENT

1. FRONT EXHAUST PIPE



EX-02173

- | | | |
|---|--|----------------------------|
| (1) Gasket | (10) Front exhaust pipe lower cover | (20) Exhaust manifold (LH) |
| (2) Exhaust manifold upper cover (RH) | (11) Gasket | |
| (3) Exhaust manifold (RH) | (12) Exhaust manifold upper cover (LH) | |
| (4) Exhaust manifold lower cover (RH) | (13) Exhaust manifold outer cover (LH) | |
| (5) Front exhaust pipe upper cover | (14) Gasket | |
| (6) Front exhaust pipe upper insulator (RH) | (15) Turbocharger joint pipe | |
| (7) Gasket | (16) Gasket | |
| (8) Front exhaust pipe | (17) Front oxygen (A/F) sensor | |
| (9) Front exhaust pipe lower insulator (RH) | (18) Front exhaust pipe upper insulator (LH) | |
| | (19) Front exhaust pipe lower insulator (LH) | |

Tightening torque: N·m (kgf-m, ft-lb)

T1: 19 (1.9, 14.0)

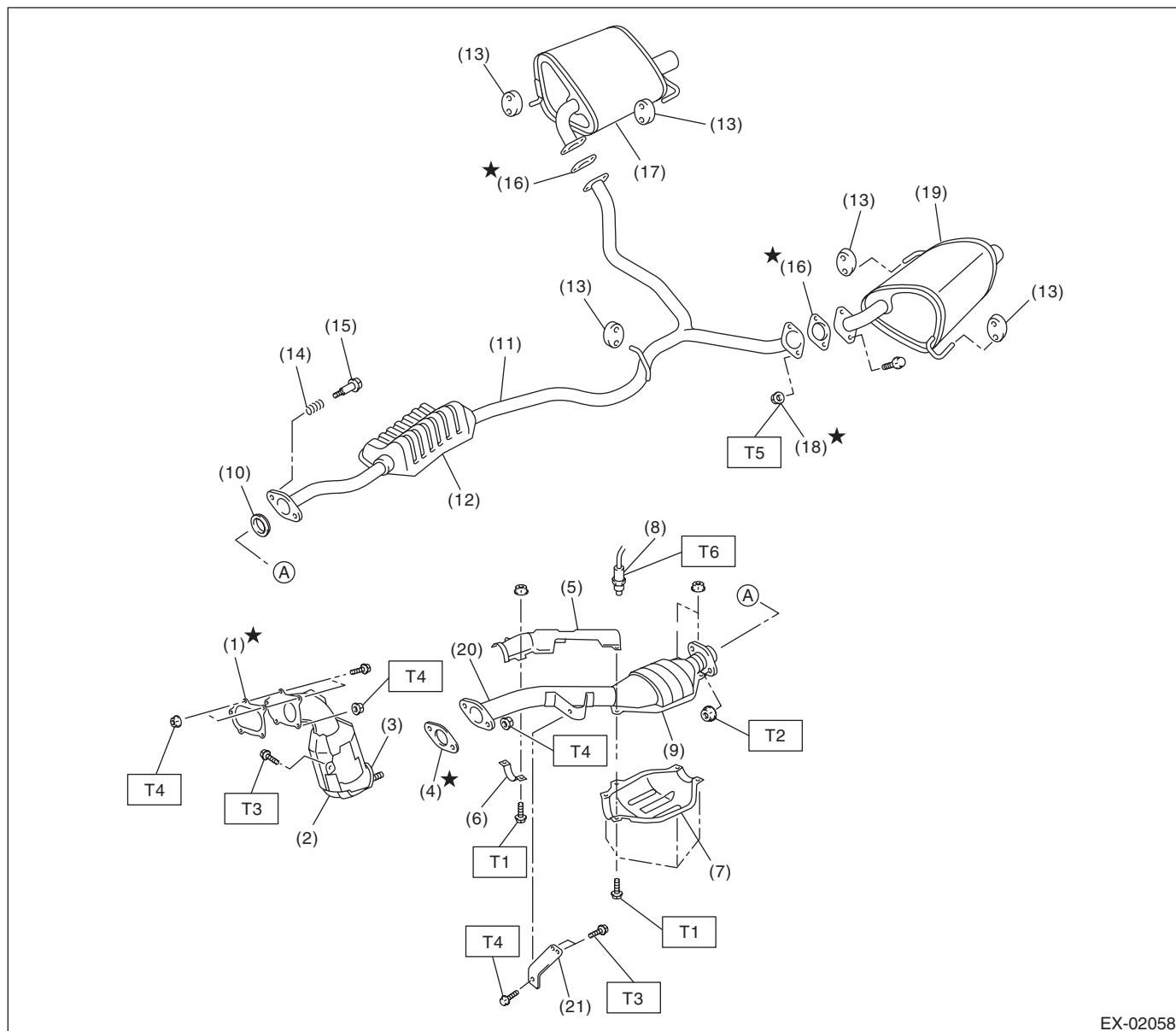
T2: 25 (2.5, 18.4)

T3: 35 (3.6, 26.0)

T4: 40 (4, 28.9)

T5: <Ref. to FU(H4DOTC)-41, INSTALLATION, Front Oxygen (A/F) Sensor.>

2. CENTER AND REAR EXHAUST PIPE, AND MUFFLER



EX-02058

- | | |
|--|---------------------------------|
| (1) Gasket | (11) Rear exhaust pipe |
| (2) Front catalytic converter | (12) Chamber |
| (3) Center exhaust pipe (Front) | (13) Cushion rubber |
| (4) Gasket | (14) Spring |
| (5) Center pipe upper cover (Rear) | (15) Bolt |
| (6) Clamp | (16) Gasket |
| (7) Rear catalytic converter lower cover | (17) Muffler (RH) |
| (8) Rear oxygen sensor | (18) Self-locking nut |
| (9) Rear catalytic converter | (19) Muffler (LH) |
| (10) Gasket | (20) Center exhaust pipe (Rear) |
| | (21) Bracket |

Tightening torque: N·m (kgf-m, ft-lb)**T1: 13 (1.3, 9.6)****T2: 18 (1.8, 13.0)****T3: 30 (3.1, 22.4)****T4: 35 (3.6, 26.0)****T5: 48 (4.9, 35.4)**

**T6: <Ref. to FU(H4DOTC)-42, Sen-
INSTALLATION, Rear Oxygen
sor.>**

B: CAUTION

- Wear appropriate work clothing, including a cap, protective goggles and protective shoes when performing any work.
- Remove contamination including dirt and corrosion before removal, installation or disassembly.
- Keep the disassembled parts in order and protect them from dust and dirt.
- Before removal, installation or disassembly, be sure to clarify the failure. Avoid unnecessary removal, installation, disassembly and replacement.
- Vehicle components are extremely hot after driving. Be wary of receiving burns from heated parts.
- Be sure to tighten fasteners including bolts and nuts to the specified torque.
- Place shop jacks or rigid racks at the specified points.
- Before disconnecting connectors of sensors or units, be sure to disconnect the ground cable from the battery.
- If any fat adheres to the exhaust pipe, wipe it off. Otherwise a fire may happen.