

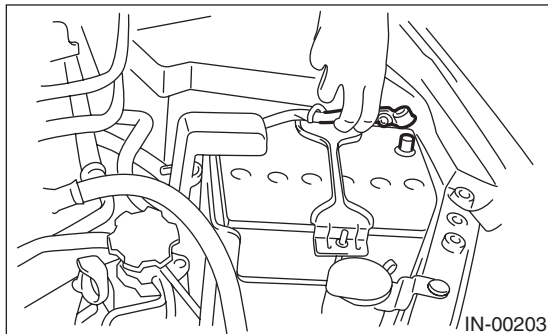
2. Front Exhaust Pipe

A: REMOVAL

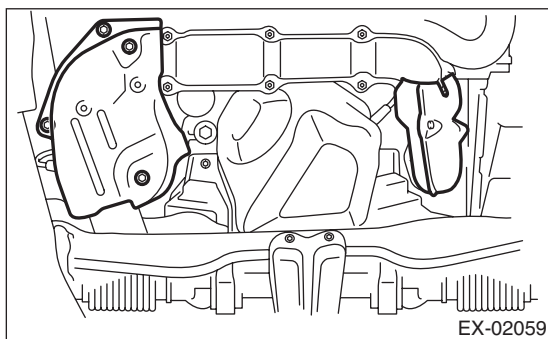
CAUTION:

Be careful not to burn yourself, because the exhaust pipe becomes extremely hot after running.

- 1) Set the vehicle on a lift.
- 2) Disconnect the ground cable from the battery.

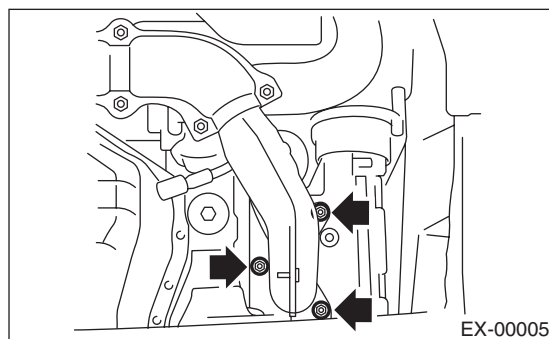
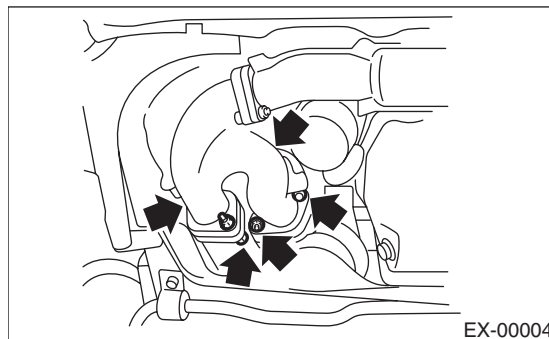


- 3) Remove the front oxygen (A/F) sensor.<Ref. to FU(H4DOTC)-40, REMOVAL, Front Oxygen (A/F) Sensor.>
- 4) Remove the under cover.
- 5) Remove the exhaust manifold lower cover (RH) and the exhaust manifold cover (LH).

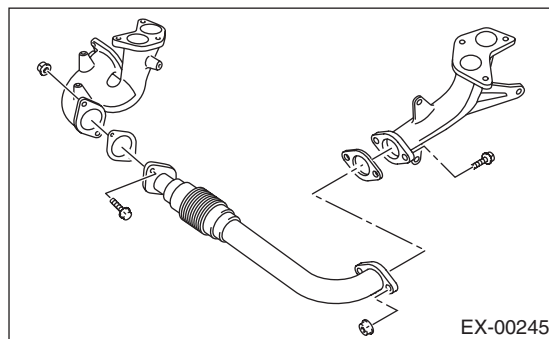


- 6) Remove the bolts and nuts which hold front exhaust pipe assembly onto turbocharger joint pipe.

- 7) While holding the front exhaust pipe assembly with one hand, remove the nuts which hold the front exhaust pipe assembly to cylinder head exhaust port.



- 8) Remove the front exhaust pipe assembly.
- 9) Remove the covers from exhaust manifold and front exhaust pipe.
- 10) Separate the front exhaust pipe from exhaust manifolds.



Front Exhaust Pipe

EXHAUST

B: INSTALLATION

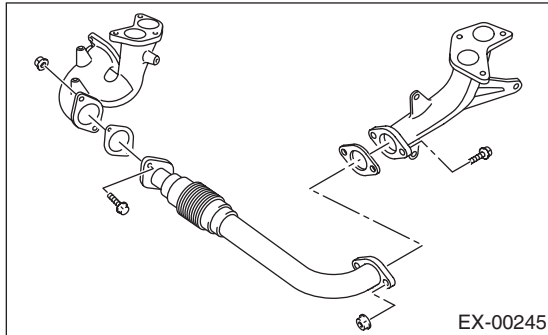
1) Install the front exhaust pipe and the exhaust manifold.

NOTE:

Use a new gasket.

Tightening torque:

35 N·m (3.6 kgf-m, 26.0 ft-lb)



2) Install the front exhaust pipe cover.

Tightening torque:

25 N·m (2.5 kgf-m, 18.4 ft-lb)

3) Install the exhaust manifold upper cover (RH).

Tightening torque:

19 N·m (1.9 kgf-m, 14.0 ft-lb)

4) Install the front exhaust pipe assembly.

NOTE:

Use a new gasket.

Tightening torque:

35 N·m (3.6 kgf-m, 26.0 ft-lb)

5) Connect the exhaust manifold (RH) to turbo-charger joint pipe.

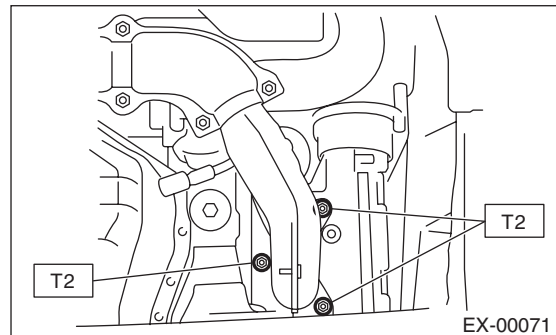
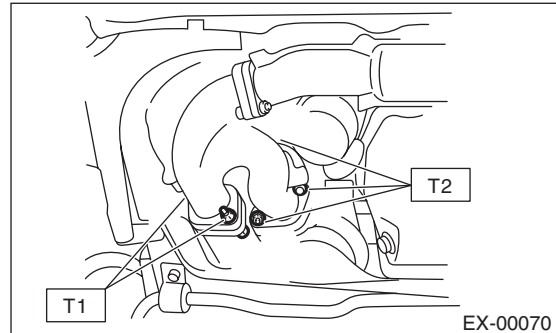
NOTE:

Use a new gasket.

Tightening torque:

T1: 35 N·m (3.6 kgf-m, 26.0 ft-lb)

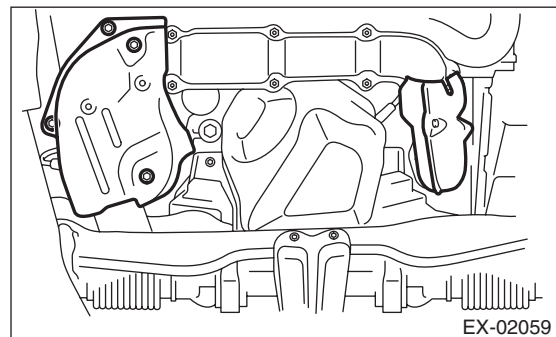
T2: 40 N·m (4.0 kgf-m, 28.9 ft-lb)



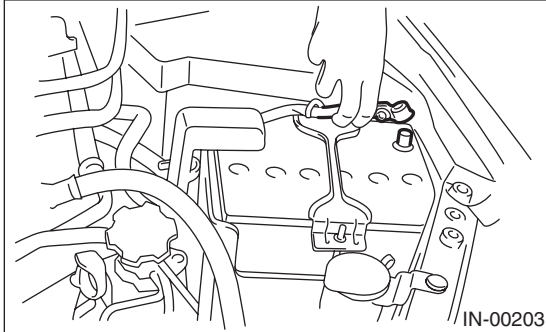
6) Install the exhaust manifold lower cover (RH) and the exhaust manifold cover (LH).

Tightening torque:

19 N·m (1.9 kgf-m, 14.0 ft-lb)



- 7) Install the front oxygen (A/F) sensor.<Ref. to FU(H4DOTC)-41, INSTALLATION, Front Oxygen (A/F) Sensor.>
- 8) Install the under cover.
- 9) Lower the vehicle.
- 10) Connect the battery ground cable to battery.



C: INSPECTION

- 1) Check the connections and welds for exhaust leaks.
- 2) Make sure there are no holes or rusting.