

General Description

FUEL INJECTION (FUEL SYSTEMS)

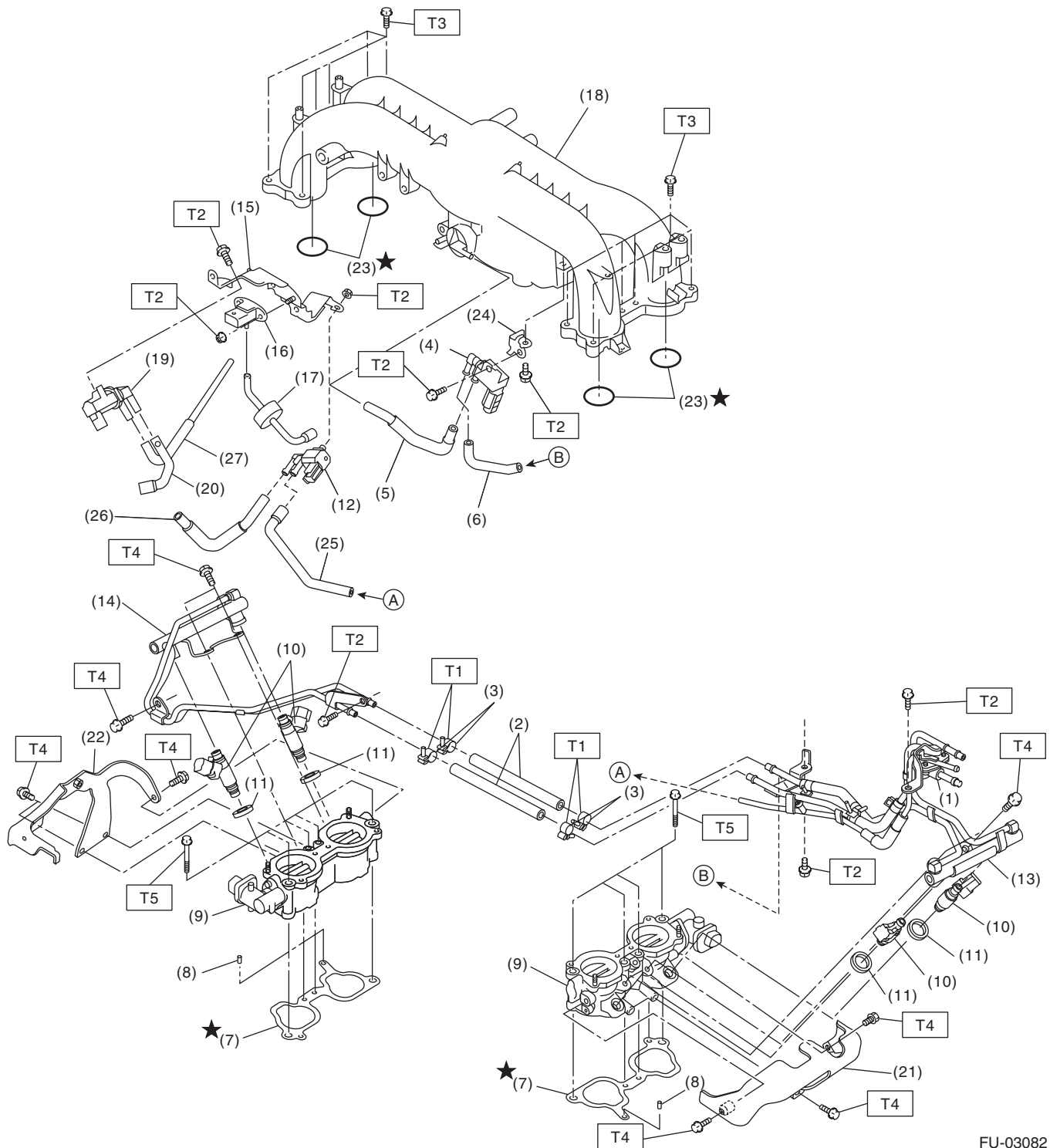
1. General Description

A: SPECIFICATION

Fuel tank	Capacity	64 ℓ (16.9 US gal, 14.1 Imp gal)
	Location	Under rear seat
Fuel pump	Type	Impeller
	Shutoff discharge pressure	550 — 850 kPa (5.61 — 8.67 kg/cm ² , 79.8 — 123.3 psi)
	Discharge rate	155 ℓ (40.9 US gal, 34.1 Imp gal)/h or more. [12 V at 300 kPa (3.06 kg/cm ² , 43.5 psi)]
Fuel filter		In-tank type

B: COMPONENT

1. INTAKE MANIFOLD



FU-03082

General Description

FUEL INJECTION (FUEL SYSTEMS)

(1) Pressure regulator	(13) Fuel injector pipe LH	(24) Solenoid valve bracket
(2) Fuel hose	(14) Fuel injector pipe RH	(25) Vacuum hose B
(3) Clamp	(15) Solenoid valve bracket	(26) Vacuum hose A
(4) Purge control solenoid valve 1	(16) Manifold absolute pressure sensor	(27) Air control hose
(5) Vacuum hose D	(17) Filter	
(6) Vacuum hose C	(18) Intake manifold	
(7) Intake manifold gasket	(19) Wastegate control solenoid valve ASSY	
(8) Guide pin	(20) Vacuum hose	
(9) Intake manifold (lower)	(21) Fuel pipe protector LH	
(10) Fuel injector	(22) Fuel pipe protector RH	
(11) Seal ring	(23) O-ring	
(12) Purge control solenoid valve 2		

Tightening torque:N·m (kgf-m, ft-lb)

T1: 1.25 (0.13, 0.94)

T2: 3.5 (0.36, 2.6)

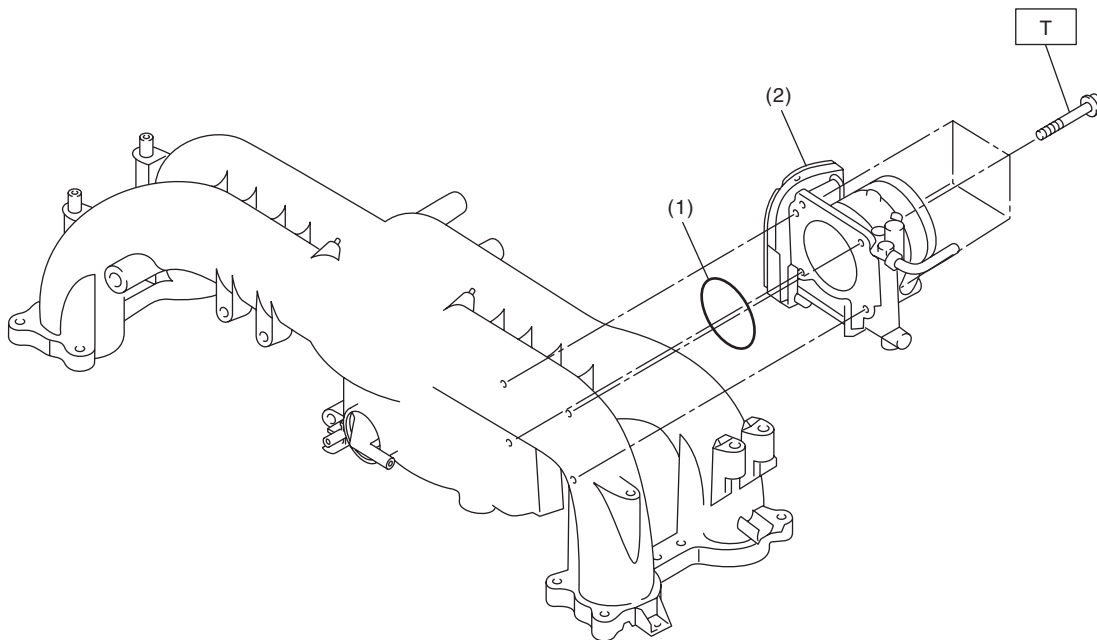
T3: 6.4 (0.65, 4.7)

T4: 8.3 (0.85, 6.1)

T5: 19 (1.9, 14)

T6: 25 (2.5, 18)

2. AIR INTAKE SYSTEM



FU-03017

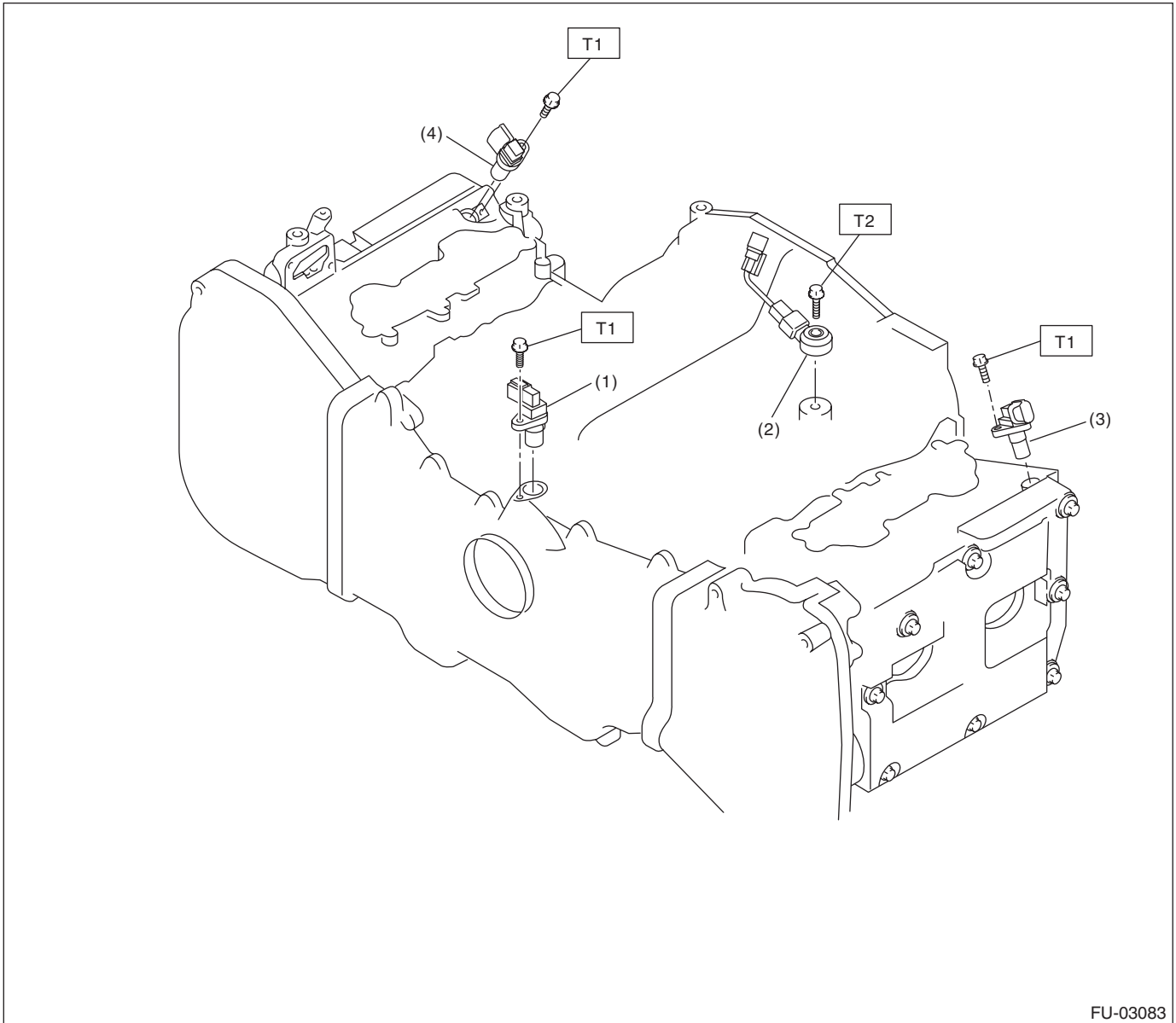
(1) O-ring

(2) Throttle body

Tightening torque:N·m (kgf-m, ft-lb)

T: 8 (0.8, 5.9)

3. CRANKSHAFT POSITION, CAMSHAFT POSITION AND KNOCK SENSORS



FU-03083

(1) Crankshaft position sensor

(2) Knock sensor

(3) Camshaft position sensor LH

(4) Camshaft position sensor RH

Tightening torque: N·m (kgf-m, ft-lb)

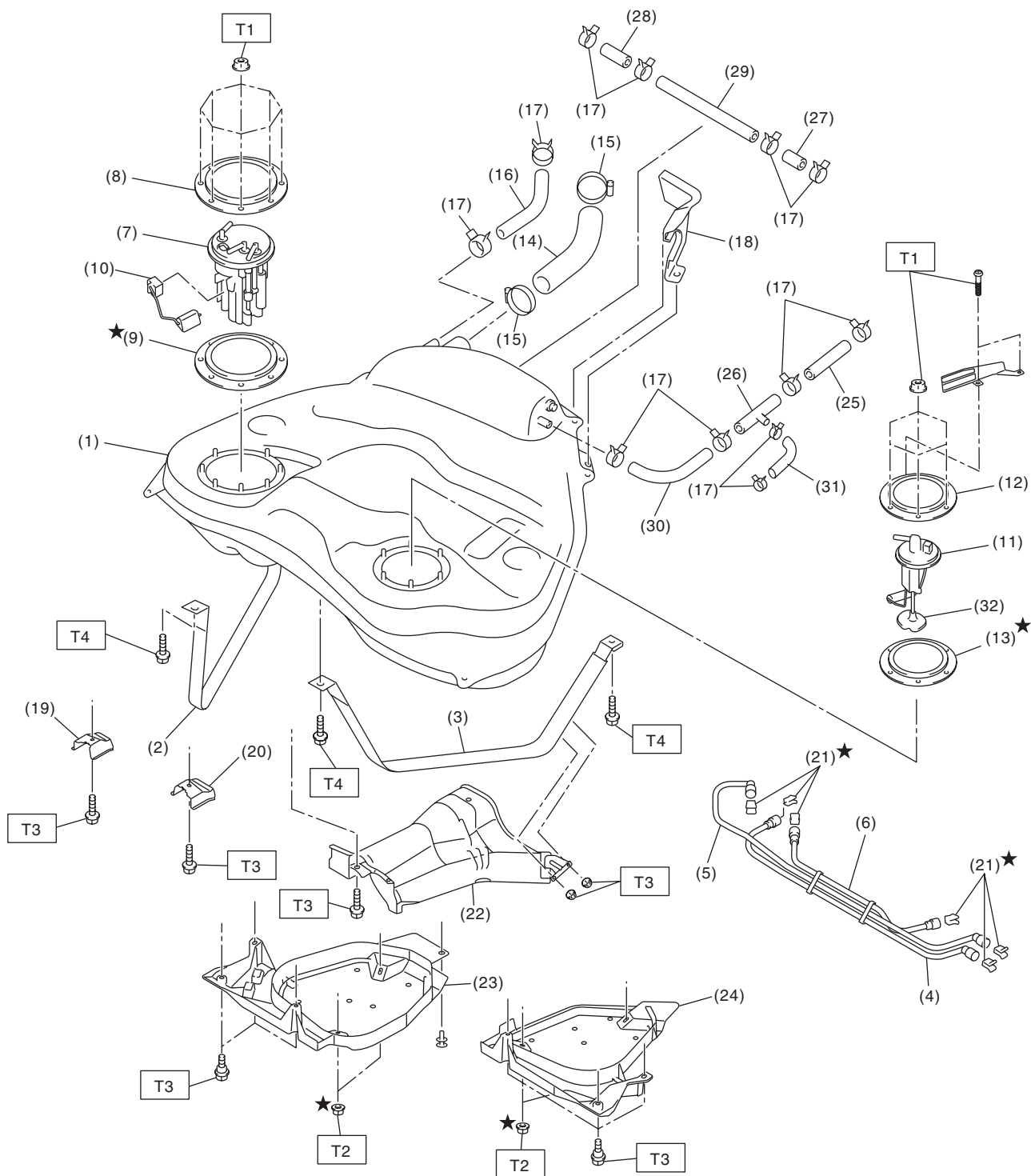
T1: 6.4 (0.65, 4.7)

T2: 24 (2.4, 17.4)

General Description

FUEL INJECTION (FUEL SYSTEMS)

4. FUEL TANK



FU-02861

General Description

FUEL INJECTION (FUEL SYSTEMS)

(1) Fuel tank	(14) Fuel filler hose	(27) Evaporation hose C
(2) Fuel tank band RH	(15) Clamp	(28) Evaporation hose D
(3) Fuel tank band LH	(16) Evaporation hose A	(29) Evaporation pipe
(4) Delivery tube	(17) Clip	(30) Evaporation hose E
(5) Return tube	(18) Fuel tank protector LH (Rear)	(31) Evaporation hose F
(6) Jet pump tube	(19) Stopper RH	(32) Fuel sub level sensor filter
(7) Fuel pump ASSY	(20) Stopper LH	(33) Fuel sub level sensor protector
(8) Fuel pump upper plate	(21) Retainer	
(9) Fuel pump gasket	(22) Heat shield cover	
(10) Fuel level sensor	(23) Fuel tank protector RH (Front)	
(11) Fuel sub level sensor	(24) Fuel tank protector LH (Front)	
(12) Fuel sub level sensor upper plate	(25) Evaporation hose B	
(13) Fuel sub level sensor gasket	(26) Connector	

Tightening torque:N·m (kgf-m, ft-lb)

T1: 4.4 (0.45, 3.2)

T2: 9 (0.9, 6.6)

T3: 17.5 (1.78, 12.9)

T4: 33 (3.4, 25)

FUEL INJECTION (FUEL SYSTEMS)

FU(H4DOTC)-8

General Description

FUEL INJECTION (FUEL SYSTEMS)

(1) Clip	(18) Drain filter	(35) Fuel damper valve
(2) Fuel delivery hose A	(19) Canister protector	(36) Drain hose
(3) Evaporation hose A	(20) Pressure control solenoid valve	(37) Drain hose connector
(4) Fuel return hose A	(21) Evaporation pipe A	(38) Evaporation hose C
(5) Fuel return hose B	(22) Evaporation pipe B	(39) Evaporation hose D
(6) Fuel damper valve holder	(23) Clip	(40) Retainer
(7) Fuel damper valve bracket	(24) Fuel filler pipe	(41) Evaporation tube
(8) Fuel delivery hose B	(25) Shut valve	(42) Evaporation hose E
(9) Fuel pipe ASSY A	(26) Gasket	(43) Quick connector check cover
(10) Fuel delivery hose C	(27) Filler ring	
(11) Fuel return hose C	(28) Fuel filler cap	
(12) Evaporation hose B	(29) Fuel tank pressure sensor	
(13) Clamp	(30) Evaporation pipe protector	
(14) Grommet	(31) Connector A	
(15) Fuel pipe ASSY B	(32) Canister hose A	
(16) Canister	(33) Connector B	
(17) Drain valve	(34) Canister hose B	

Tightening torque:N·m (kgf-m, ft-lb)**T1: 4.4 (0.45, 3.2)****T2: 7.5 (0.76, 5.5)****T3: 8 (0.8, 5.9)****T4: 17.6 (1.8, 13)****T5: 1.25 (0.13, 0.94)****T6: 1.0 (0.1, 0.7)**

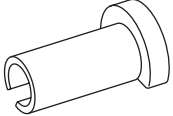
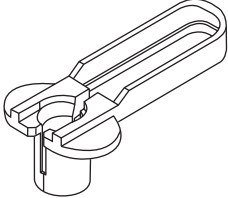
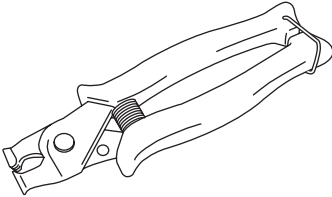
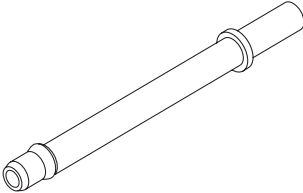
C: CAUTION

- Wear appropriate work clothing, including a cap, protective goggles and protective shoes when performing any work.
- Remove contamination including dirt and corrosion before removal, installation or disassembly.
- Keep the disassembled parts in order and protect them from dust and dirt.
- Before removal, installation or disassembly, be sure to clarify the failure. Avoid unnecessary removal, installation, disassembly and replacement.
- Vehicle components are extremely hot after driving. Be wary of receiving burns from heated parts.
- Be sure to tighten fasteners including bolts and nuts to the specified torque.
- Place shop jacks or rigid racks at the specified points.
- Before disconnecting connectors of sensors or units, be sure to disconnect the ground cable from the battery.
- Place “NO OPEN FLAMES” signs near the working area.
- Prepare a container and cloth to prevent scattering of fuels when performing work where fuels can be spilled. If the fuel spills, wipe it off immediately to prevent from penetrating into floor or flowing out for environmental protection.
- Follow all government and local regulations concerning disposal of refuse when disposing fuel.

General Description

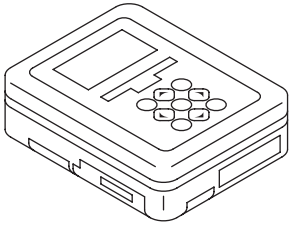
FUEL INJECTION (FUEL SYSTEMS)

D: PREPARATION TOOL

ILLUSTRATION	TOOL NUMBER	DESCRIPTION	REMARKS
 ST42099AE000	42099AE000	CONNECTOR REMOVER	Used for disconnecting quick connector on the fuel delivery hose side of the engine compartment.
 ST18371AA000	18371AA000 (Newly adopted tool)	CONNECTOR REMOVER	Used for disconnecting the quick connector on the fuel return hose of the engine compartment.
 ST18353AA000	18353AA000	CLAMP PLIERS	<ul style="list-style-type: none"> Used for removing and installing the PCV hose. This is a general tool made by the French company CAILLAU. (code) 54.0.000.205 To make this easier to obtain in the same way as genuine Subaru parts, it has been provided with a tool number as an ST.
 ST18471AA000	18471AA000	FUEL PIPE ADAPTER	Used for draining fuel.

General Description

FUEL INJECTION (FUEL SYSTEMS)

ILLUSTRATION	TOOL NUMBER	DESCRIPTION	REMARKS
 ST1B021XU0	1B021XU0	SUBARU SELECT MONITOR III KIT	Used for draining fuel.