

# Oil Flow Control Solenoid Valve

FUEL INJECTION (FUEL SYSTEMS)

## 15.Oil Flow Control Solenoid Valve

### A: REMOVAL

Oil flow control solenoid valve is a unit with camshaft cap.

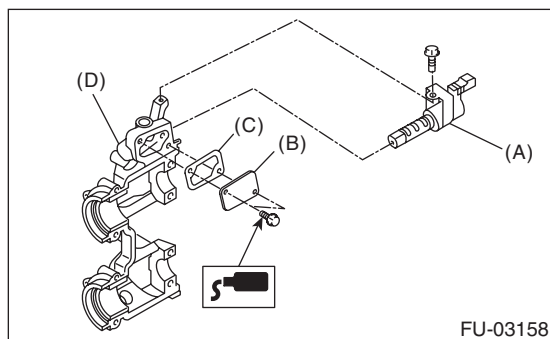
Refer to “Camshaft” for removal procedure. <Ref. to ME(H4DOTC)-53, REMOVAL, Camshaft.>

### B: INSTALLATION

Refer to “Camshaft” for installation procedure. <Ref. to ME(H4DOTC)-54, INSTALLATION, Camshaft.>

### C: DISASSEMBLY

- 1) Remove the 2 mounting bolts and remove the oil return cover and gasket.
- 2) Remove the mounting bolt and remove the oil flow control solenoid valve.



- (A) Oil flow control solenoid valve
- (B) Oil return cover
- (C) Gasket
- (D) Camshaft cap

### D: ASSEMBLY

- 1) Install the oil flow control solenoid valve.

**Tightening torque:**

**8 N·m (0.8 kgf-m, 5.9 ft-lb)**

- 2) Apply liquid gasket to the two bolts which secure the oil return cover.

**Liquid gasket:**

**THREE BOND 1324 (Part No. 004403042) or equivalent**

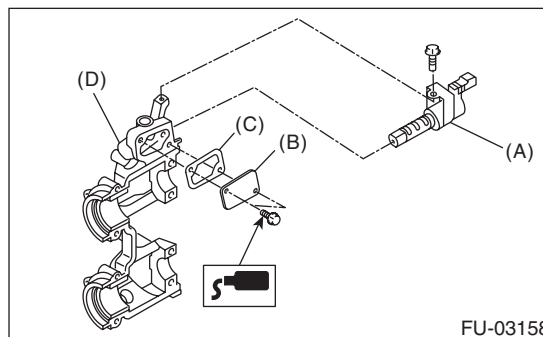
- 3) Attach the oil return cover and gasket.

**Tightening torque:**

**8 N·m (0.8 kgf-m, 5.9 ft-lb)**

**NOTE:**

Use a new gasket.



- (A) Oil flow control solenoid valve
- (B) Oil return cover
- (C) Gasket
- (D) Camshaft cap