

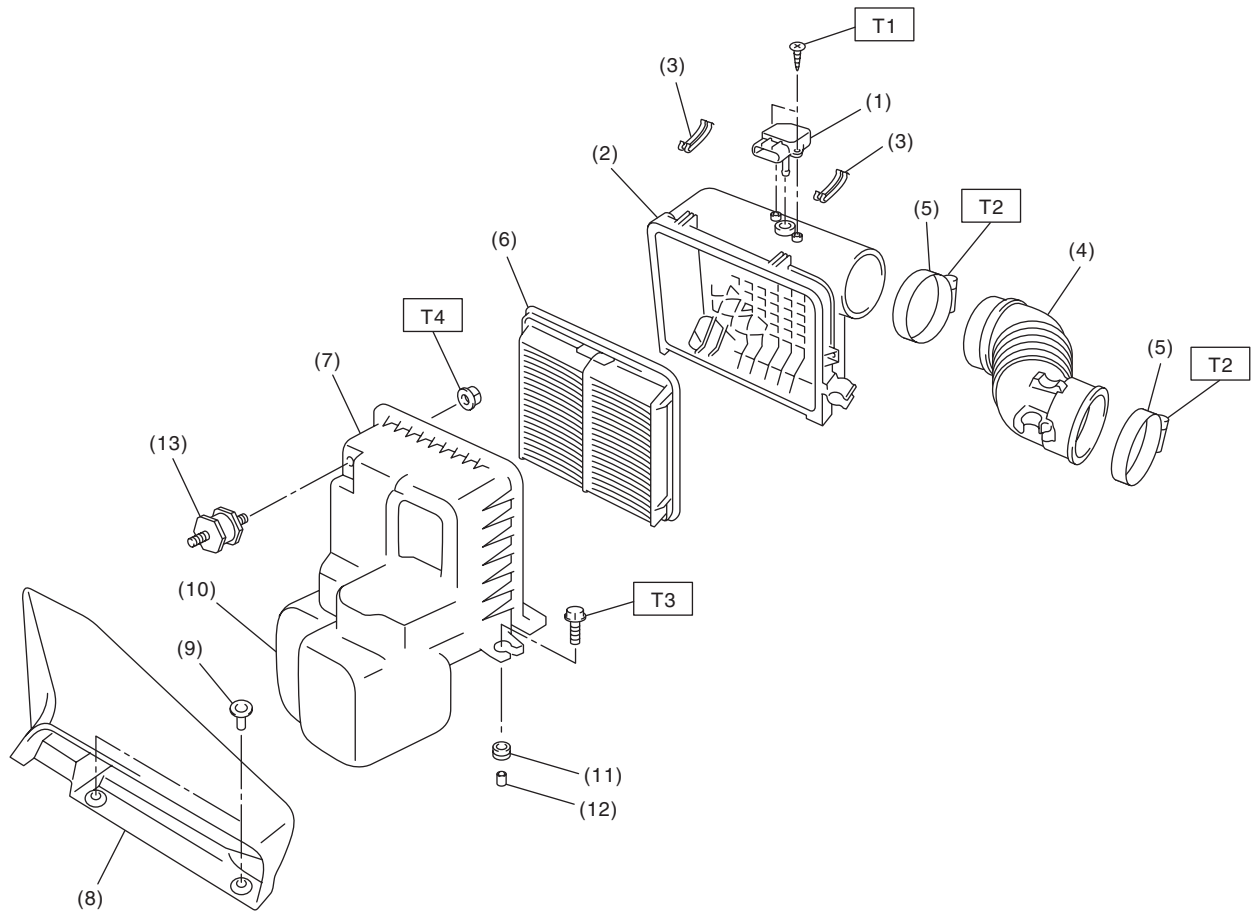
General Description

INTAKE (INDUCTION)

1. General Description

A: COMPONENT

1. AIR CLEANER



IN-02209

- | | |
|---|------------------------------|
| (1) Mass air flow and intake air temperature sensor | (7) Air cleaner case (front) |
| (2) Air cleaner case (rear) | (8) Air intake duct |
| (3) Clip | (9) Clip |
| (4) Air intake boot | (10) Resonator chamber |
| (5) Clamp | (11) Cushion |
| (6) Air cleaner element | (12) Spacer |
| | (13) Cushion |

Tightening torque:N·m (kgf-m, ft-lb)

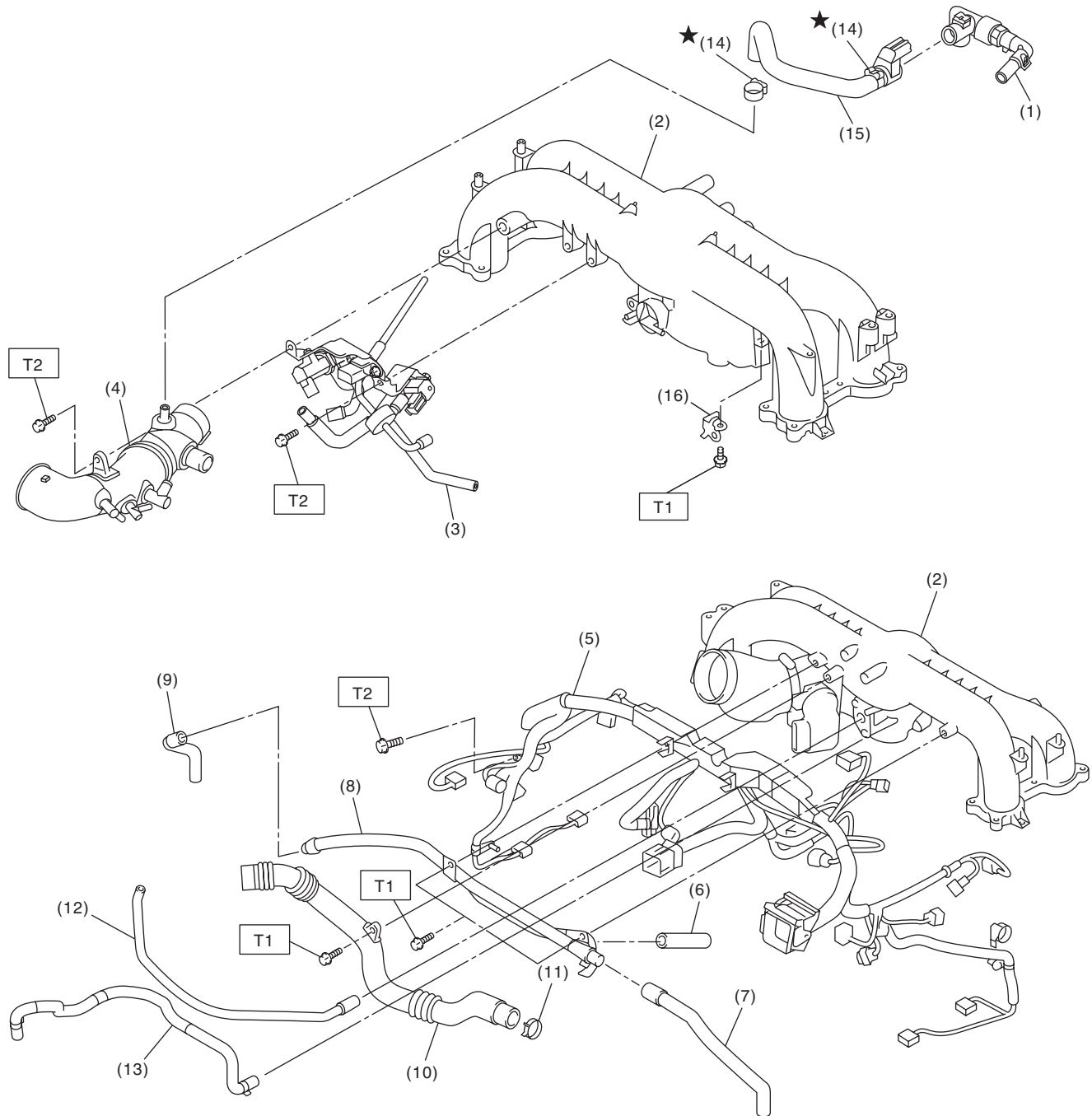
T1: 1.0 (0.10, 0.74)

T2: 2.5 (0.25, 1.8)

T3: 6.0 (0.61, 4.4)

T4: 7.5 (0.76, 5.5)

2. INTAKE DUCT



IN-02224

- (1) PCV hose ASSY A
- (2) Intake manifold
- (3) Solenoid valve bracket ASSY
- (4) Intake duct
- (5) Engine harness ASSY
- (6) Vacuum hose
- (7) Vacuum hose

- (8) PCV pipe
- (9) Vacuum hose
- (10) Air by-pass pipe
- (11) Clamp
- (12) Vacuum hose
- (13) Brake booster hose
- (14) Clamp

- (15) PCV hose ASSY B
- (16) Solenoid valve bracket

Tightening torque: N·m (kgf-m, ft-lb)

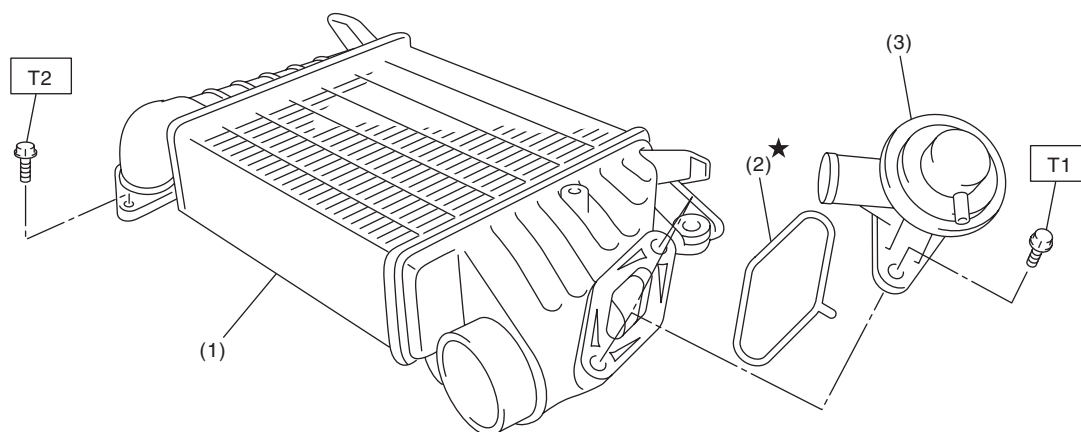
T1: 6.4 (0.65, 4.7)

T2: 19 (1.9, 13.7)

General Description

INTAKE (INDUCTION)

3. INTERCOOLER



IN-02075

(1) Intercooler

(3) Air by-pass valve

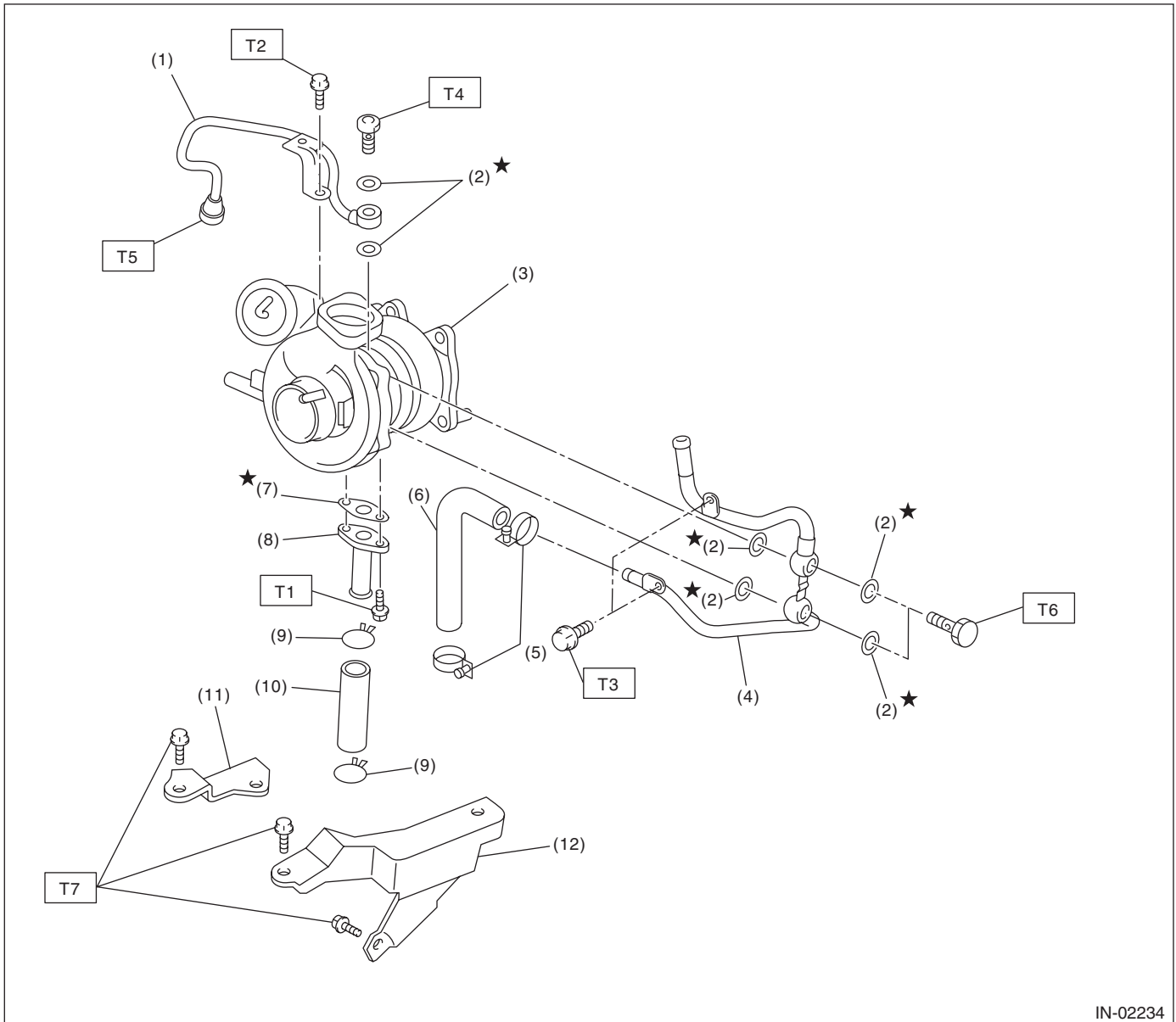
(2) O-ring

Tightening torque: N·m (kgf-m, ft-lb)

T1: 6.5 (0.66, 4.8)

T2: 16 (1.6, 11.6)

4. TURBOCHARGER



IN-02234

- | | |
|-------------------------|------------------------------|
| (1) Oil inlet pipe | (8) Oil outlet pipe |
| (2) Metal gasket | (9) Clip |
| (3) Turbocharger | (10) Oil outlet hose |
| (4) Water pipe | (11) Turbocharger bracket RH |
| (5) Clamp | (12) Turbocharger bracket LH |
| (6) Engine coolant hose | |
| (7) Gasket | |

Tightening torque: N·m (kgf-m, ft-lb)

- | |
|-----------------------------------|
| <i>T1: 4.9 (0.5, 3.6)</i> |
| <i>T2: 5.0 (0.51, 3.7)</i> |
| <i>T3: 7.8 (0.8, 5.8)</i> |
| <i>T4: 16 (1.6, 11.6)</i> |
| <i>T5: 20 (2.0, 14.8)</i> |
| <i>T6: 23 (2.3, 17.0)</i> |
| <i>T7: 33 (3.4, 24.6)</i> |

General Description

INTAKE (INDUCTION)

B: CAUTION

- Wear appropriate work clothing, including a cap, protective goggles and protective shoes when performing any work.
- Remove contamination including dirt and corrosion before removal, installation or disassembly.
- Keep the disassembled parts in order and protect them from dust and dirt.
- Before removal, installation or disassembly, be sure to clarify the failure. Avoid unnecessary removal, installation, disassembly and replacement.
- Vehicle components are extremely hot after driving. Be wary of receiving burns from heated parts.
- Be sure to tighten fasteners including bolts and nuts to the specified torque.
- Place shop jacks or rigid racks at the specified points.
- Before disconnecting connectors of sensors or units, be sure to disconnect the ground cable from the battery.