

General Description

FUEL INJECTION (FUEL SYSTEMS)

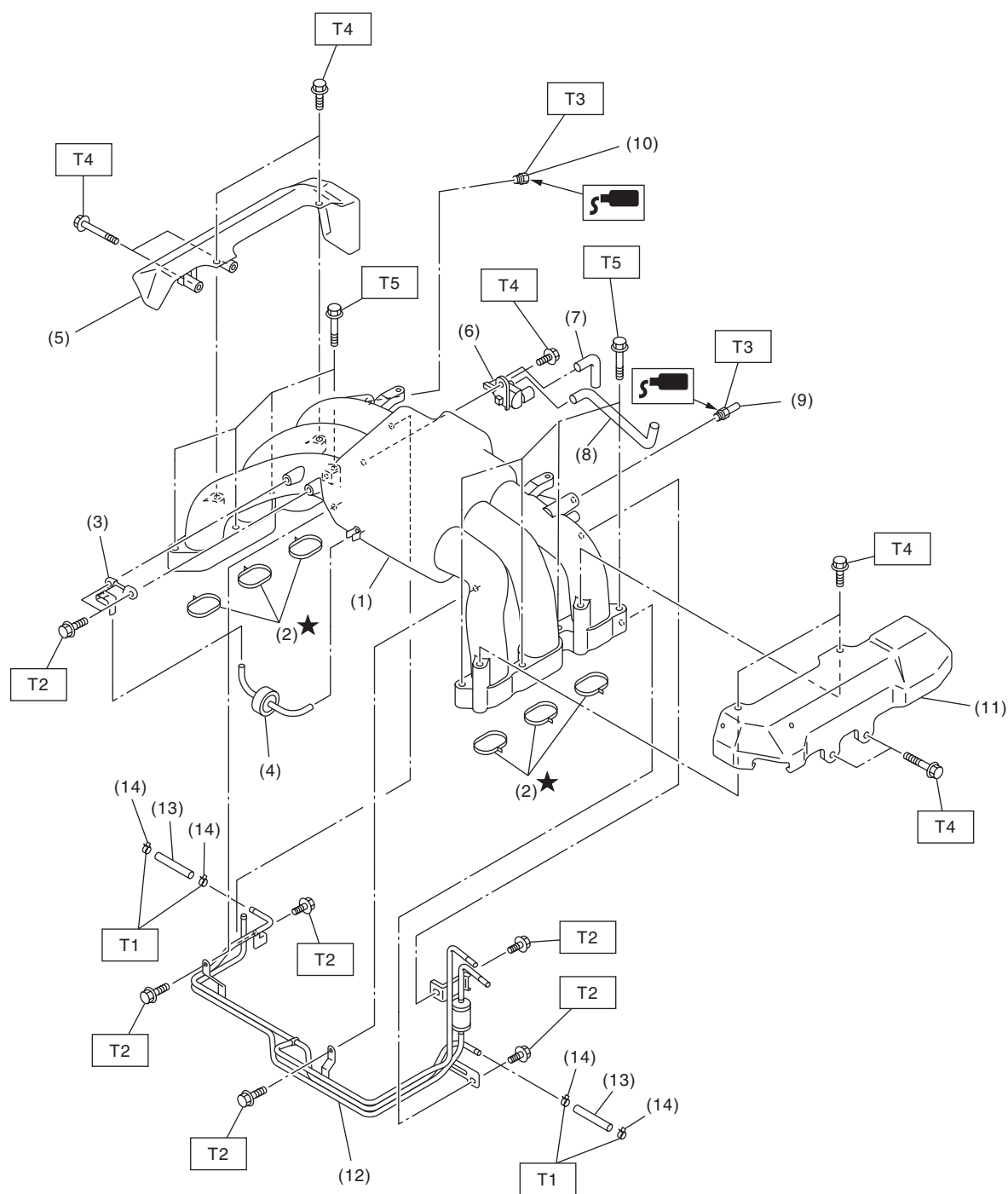
1. General Description

A: SPECIFICATION

Fuel tank	Capacity	64 ℓ (16.9 US gal, 14.1 Imp gal)
	Location	Under rear seat
Fuel pump	Type	Impeller
	Shutoff discharge pressure	550 — 850 kPa (5.61 — 8.67 kg/cm ² , 79.8 — 123.3 psi)
	Discharge rate	125 ℓ (33 US gal, 27.5 Imp gal)/h or more. [12 V at 300 kPa (3.06 kg/cm ² , 43.5 psi)]
Fuel filter		In-tank type

B: COMPONENT

1. INTAKE MANIFOLD



FU-02706

General Description

FUEL INJECTION (FUEL SYSTEMS)

- | | |
|---------------------------------------|-----------------------------|
| (1) Intake manifold | (8) Hose |
| (2) O-ring | (9) Nipple |
| (3) Manifold absolute pressure sensor | (10) Plug |
| (4) Filter | (11) Fuel pipe protector LH |
| (5) Fuel pipe protector RH | (12) Fuel pipe ASSY |
| (6) Purge control solenoid valve | (13) Hose |
| (7) Hose | (14) Clamp |

Tightening torque:N·m (kgf-m, ft-lb)

T1: 1.5 (0.15, 1.1)

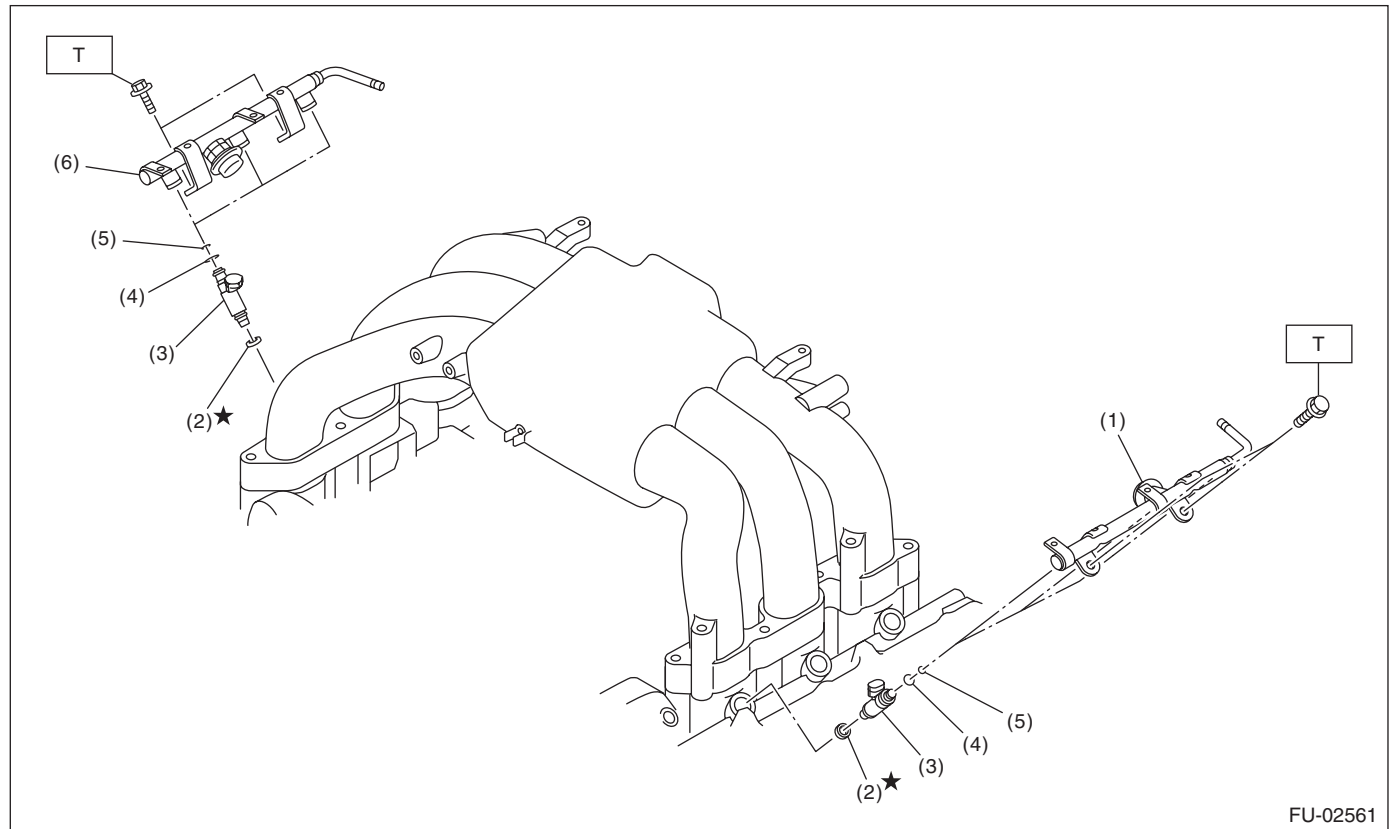
T2: 6.4 (0.65, 4.7)

T3: 17 (1.7, 12.5)

T4: 19 (1.9, 14)

T5: 25 (2.5, 18)

2. FUEL INJECTOR

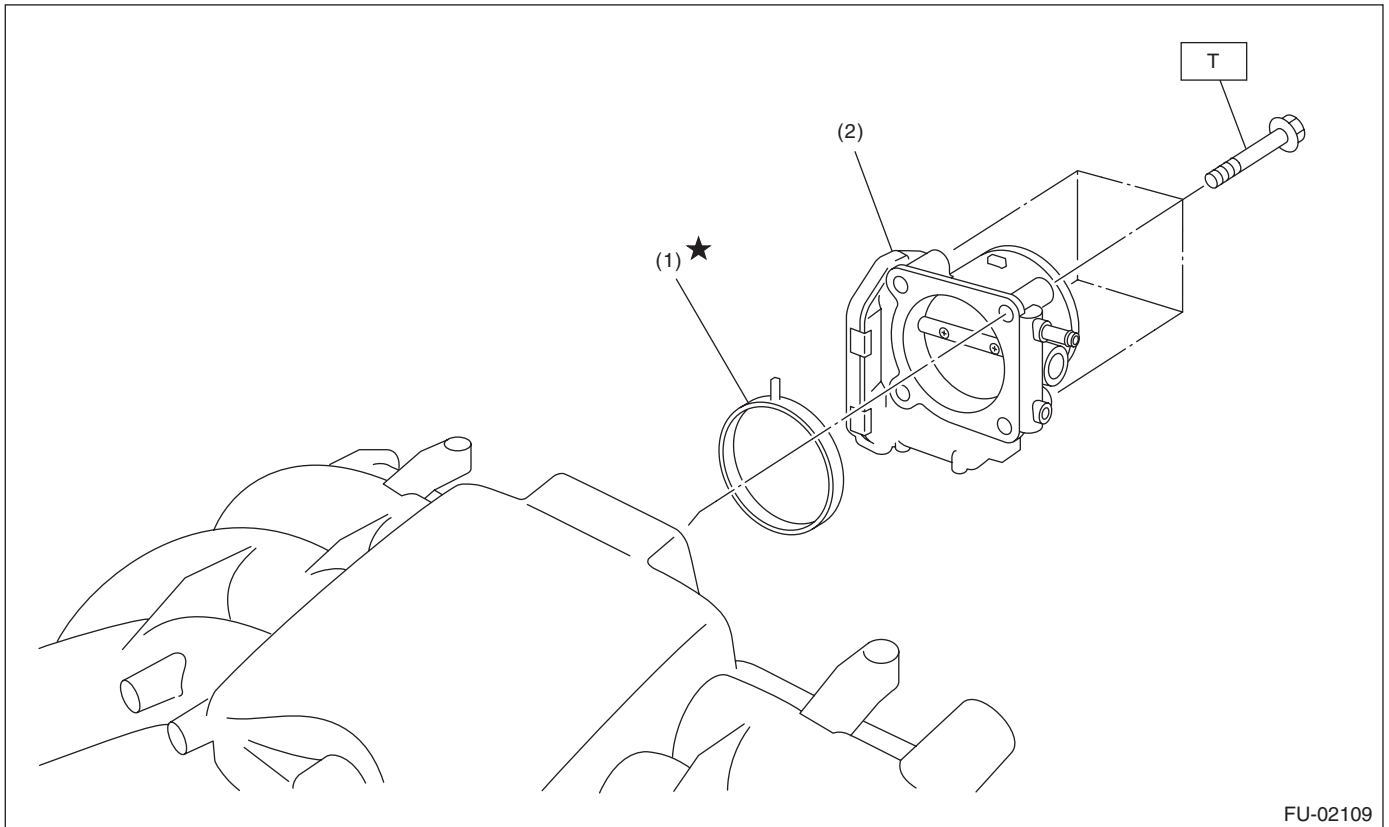


- | | |
|---------------------------|---------------------------|
| (1) Fuel injector pipe LH | (4) Injection rubber |
| (2) Insulator | (5) O-ring |
| (3) Fuel injector | (6) Fuel injector pipe RH |

Tightening torque:N·m (kgf-m, ft-lb)

T: 19 (1.9, 14)

3. AIR INTAKE SYSTEM



FU-02109

(1) O-ring

(2) Throttle body

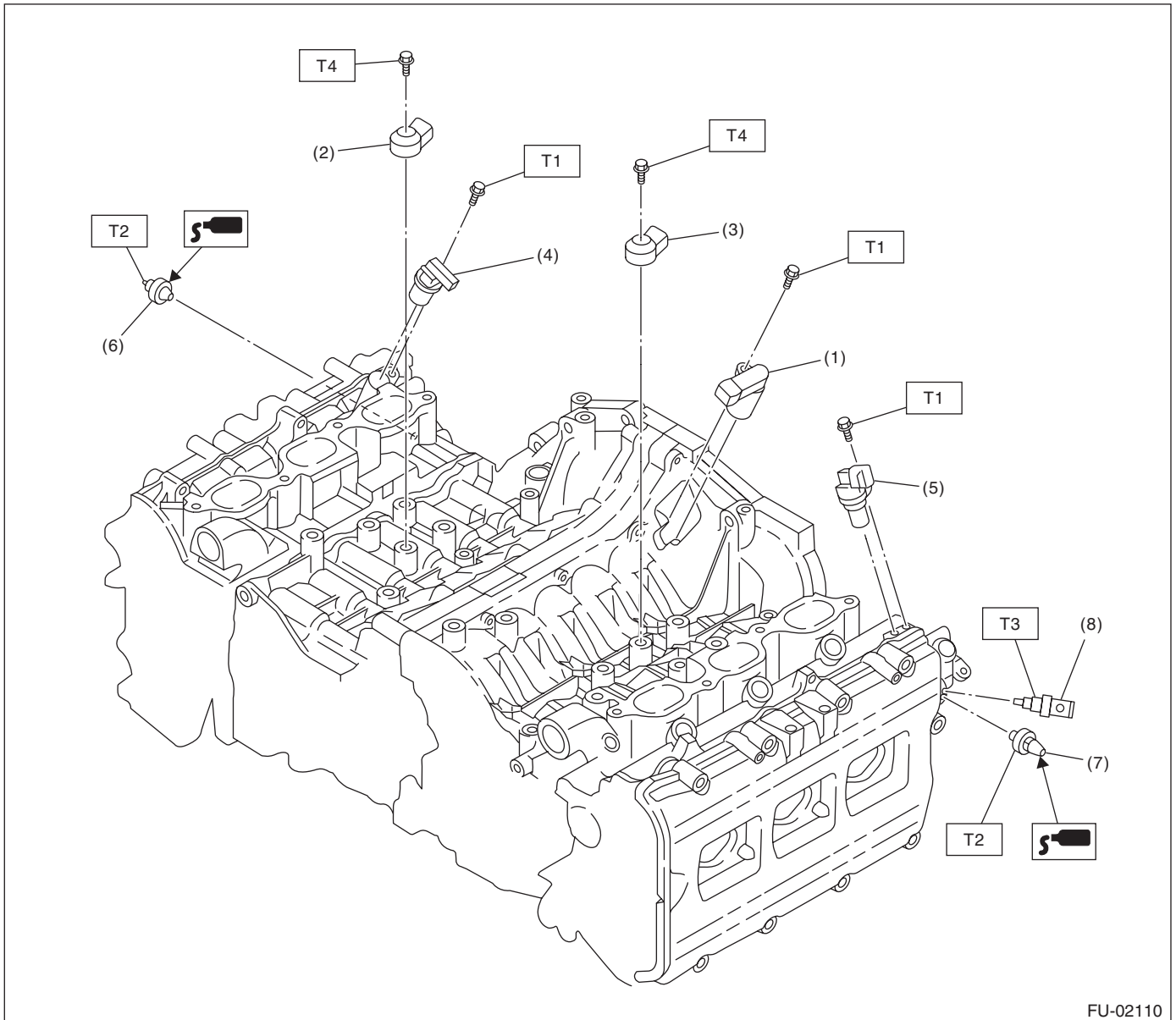
Tightening torque: N·m (kgf-m, ft-lb)

T: 8 (0.8, 5.9)

General Description

FUEL INJECTION (FUEL SYSTEMS)

4. CRANKSHAFT POSITION, CAMSHAFT POSITION AND KNOCK SENSORS



FU-02110

- | | |
|---------------------------------|--|
| (1) Crankshaft position sensor | (6) Variable valve lift diagnosis oil pressure switch RH |
| (2) Knock sensor RH | (7) Variable valve lift diagnosis oil pressure switch LH |
| (3) Knock sensor LH | (8) Oil temperature sensor |
| (4) Camshaft position sensor RH | |
| (5) Camshaft position sensor LH | |

Tightening torque: N·m (kgf-m, ft-lb)

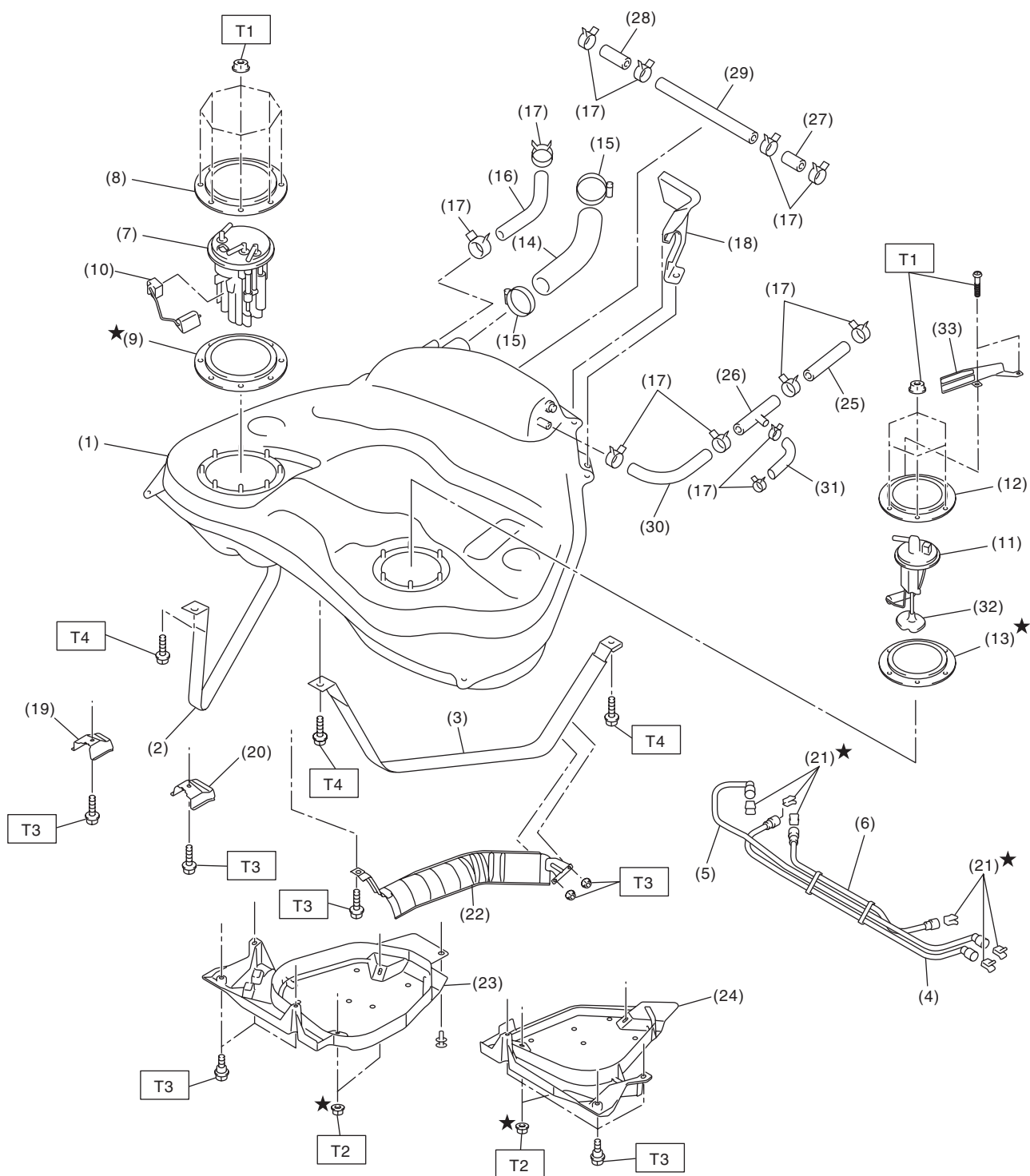
T1: 6.4 (0.65, 4.7)

T2: 17 (1.7, 12.5)

T3: 18 (1.8, 13.3)

T4: 25 (2.5, 18)

5. FUEL TANK



FU-02862

General Description

FUEL INJECTION (FUEL SYSTEMS)

(1) Fuel tank	(14) Fuel filler hose	(27) Evaporation hose C
(2) Fuel tank band RH	(15) Clamp	(28) Evaporation hose D
(3) Fuel tank band LH	(16) Evaporation hose A	(29) Evaporation pipe
(4) Delivery tube	(17) Clip	(30) Evaporation hose E
(5) Return tube	(18) Fuel tank protector LH (Rear)	(31) Evaporation hose F
(6) Jet pump tube	(19) Stopper RH	(32) Fuel sub level sensor filter
(7) Fuel pump ASSY	(20) Stopper LH	(33) Fuel sub level sensor protector
(8) Fuel pump upper plate	(21) Retainer	
(9) Fuel pump gasket	(22) Heat shield cover	
(10) Fuel level sensor	(23) Fuel tank protector RH (Front)	
(11) Fuel sub level sensor	(24) Fuel tank protector LH (Front)	
(12) Fuel sub level sensor upper plate	(25) Evaporation hose B	
(13) Fuel sub level sensor gasket	(26) Connector	

Tightening torque:N·m (kgf-m, ft-lb)

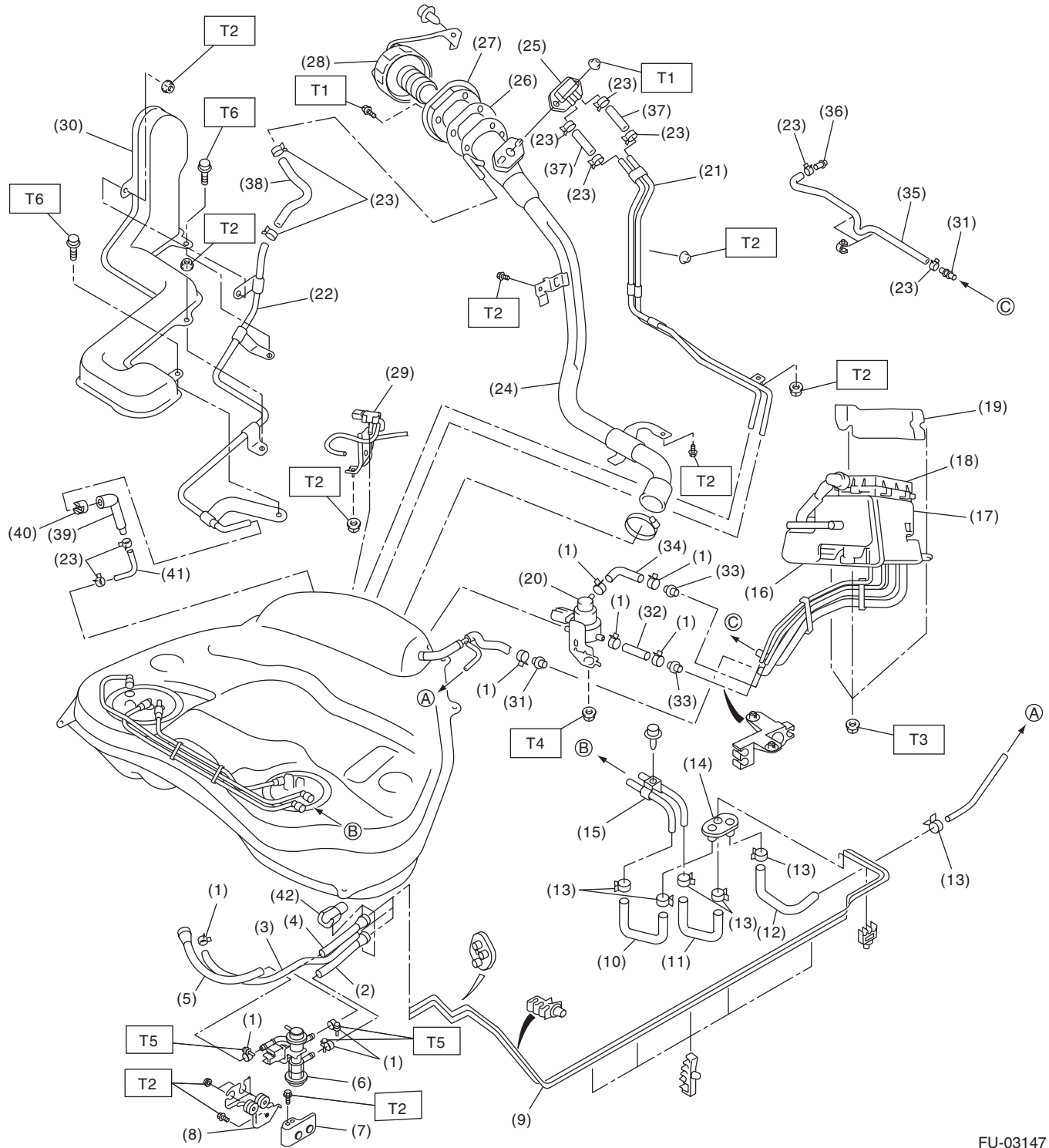
T1: 4.4 (0.45, 3.2)

T2: 9 (0.9, 6.6)

T3: 17.5 (1.78, 12.9)

T4: 33 (3.4, 24.3)

6. FUEL LINE



FU-03147

General Description

FUEL INJECTION (FUEL SYSTEMS)

(1) Clip	(18) Drain filter	(35) Drain hose
(2) Fuel return hose A	(19) Canister protector	(36) Drain hose connector
(3) Evaporation hose A	(20) Pressure control solenoid valve	(37) Evaporation hose C
(4) Fuel delivery hose A	(21) Evaporation pipe A	(38) Evaporation hose D
(5) Fuel delivery hose B	(22) Evaporation pipe B	(39) Evaporation tube
(6) Fuel by-pass valve	(23) Clip	(40) Retainer
(7) Bracket	(24) Fuel filler pipe	(41) Evaporation hose E
(8) Bracket	(25) Shut valve	(42) Quick connector check cover
(9) Fuel pipe ASSY A	(26) Gasket	
(10) Fuel delivery hose C	(27) Filler ring	
(11) Fuel return hose B	(28) Fuel filler cap	
(12) Evaporation hose B	(29) Fuel tank pressure sensor	
(13) Clamp	(30) Evaporation pipe protector	
(14) Grommet	(31) Connector A	
(15) Fuel pipe ASSY B	(32) Canister hose A	
(16) Canister	(33) Connector B	
(17) Drain valve	(34) Canister hose B	

Tightening torque:N·m (kgf-m, ft-lb)

T1: 4.4 (0.45, 3.2)

T2: 7.5 (0.76, 5.5)

T3: 8 (0.8, 5.9)

T4: 17.6 (1.8, 13)

T5: 1.25 (0.13, 0.94)

T6: 1.0 (0.1, 0.7)

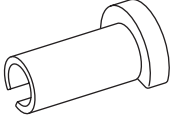
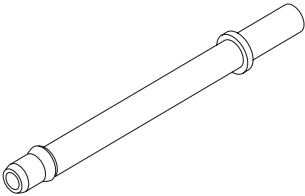
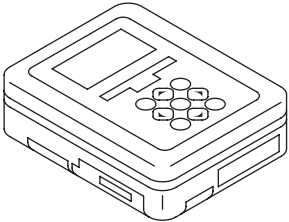
C: CAUTION

- Wear appropriate work clothing, including a cap, protective goggles and protective shoes when performing any work.
- Remove contamination including dirt and corrosion before removal, installation or disassembly.
- Keep the disassembled parts in order and protect them from dust and dirt.
- Before removal, installation or disassembly, be sure to clarify the failure. Avoid unnecessary removal, installation, disassembly and replacement.
- Vehicle components are extremely hot after driving. Be wary of receiving burns from heated parts.
- Be sure to tighten fasteners including bolts and nuts to the specified torque.
- Place shop jacks or rigid racks at the specified points.
- Before disconnecting connectors of sensors or units, be sure to disconnect the ground cable from the battery.
- Place "NO OPEN FLAMES" signs near the working area.
- Prepare a container and cloth to prevent scattering of fuels when performing work where fuels can be spilled. If the fuel spills, wipe it off immediately to prevent from penetrating into floor or flowing out for environmental protection.
- Follow all government and local regulations concerning disposal of refuse when disposing fuel.

General Description

FUEL INJECTION (FUEL SYSTEMS)

D: PREPARATION TOOL

ILLUSTRATION	TOOL NUMBER	DESCRIPTION	REMARKS
 ST42099AE000	42099AE000	CONNECTOR REMOVER	Used for disconnecting quick connector of the engine compartment.
 ST18471AA000	18471AA000	FUEL PIPE ADAPTER	Used for draining fuel.
 ST1B021XU0	1B021XU0	SUBARU SELECT MONITOR III KIT	Used for draining fuel.