

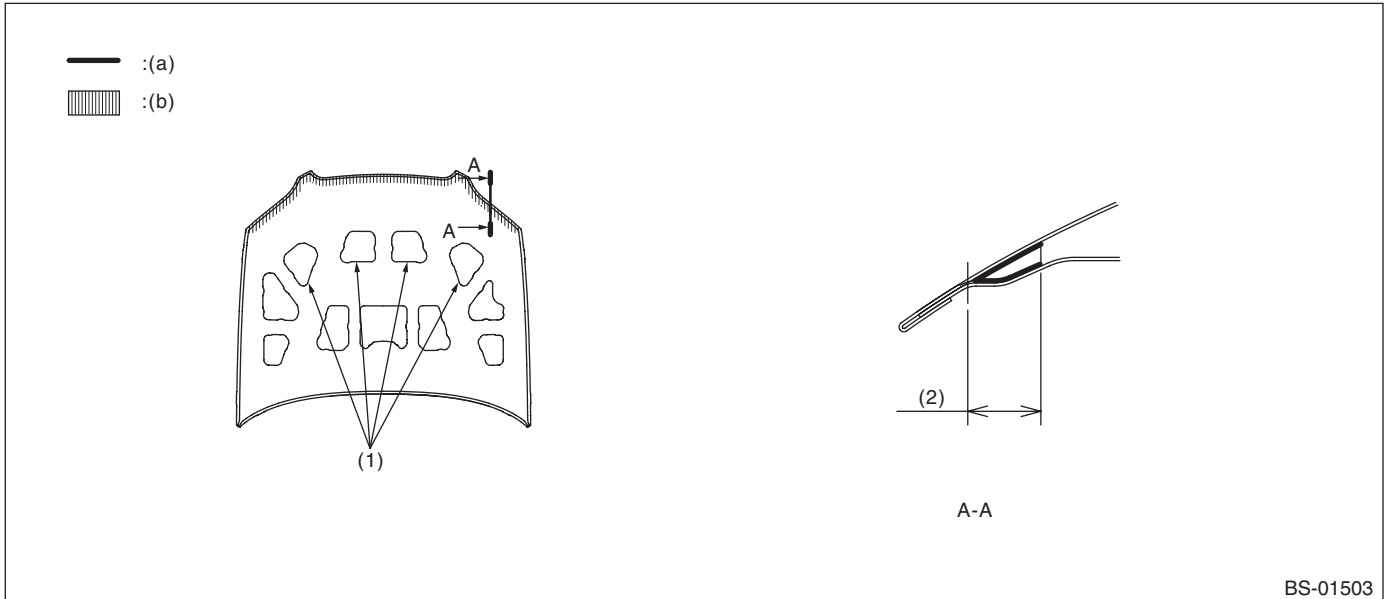
## 6. Anticorrosion Wax

### A: SPECIFICATION

**Used material:**

***Rust-stop aerosol (K0877YA015)***

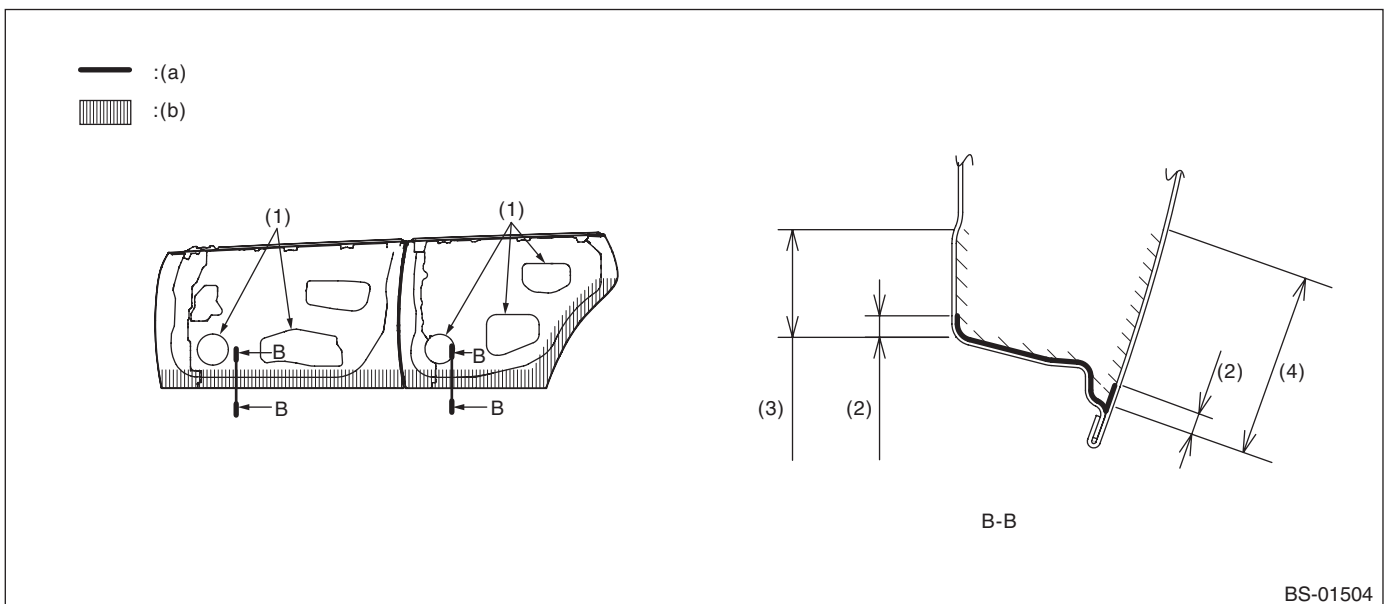
- Front hood



- (a) Application thickness = 50  $\mu\text{m}$  or more      (b) Application area

- (1) Wax application work openings      (2) 10 mm (0.39 in)

- Door (front, rear)



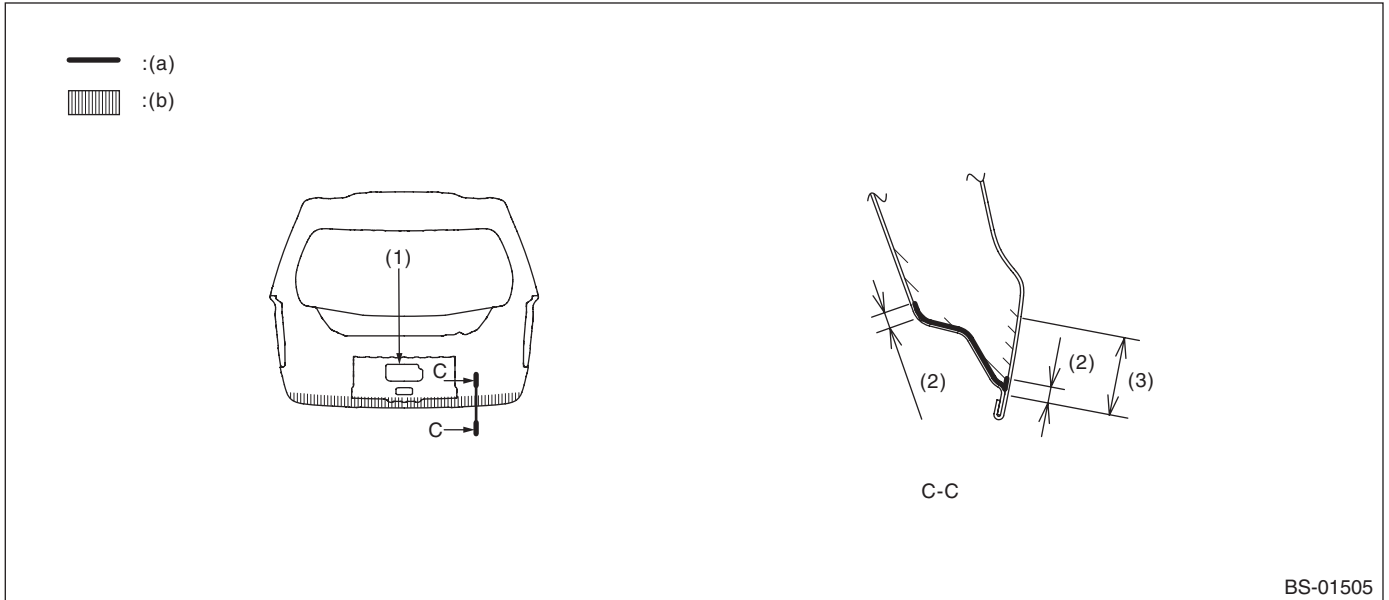
- (a) Application thickness = 50  $\mu\text{m}$  or more      (b) Application area

- (1) Wax application work openings      (3) 50 mm (1.97 in)      (4) 90 mm (3.54 in)
- (2) 10 mm (0.39 in)

# Anticorrosion Wax

## BODY STRUCTURE

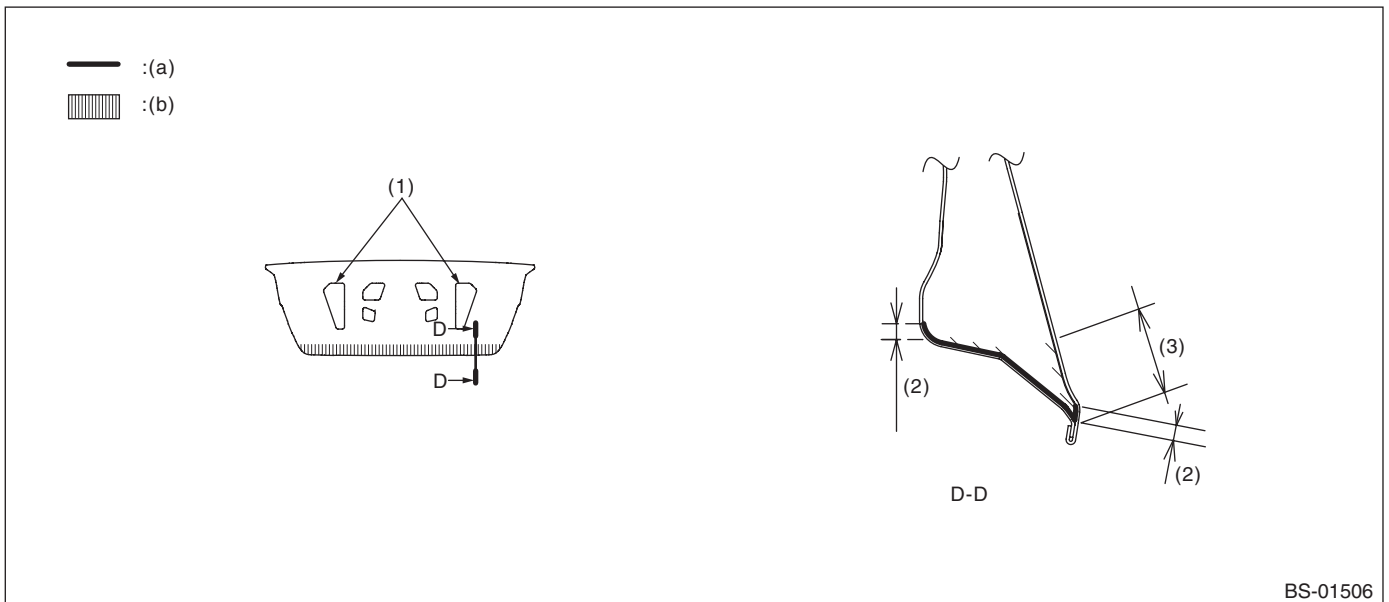
### • Rear gate



- (a) Application thickness = 50  $\mu\text{m}$  or more      (b) Application area more

- (1) Wax application work openings      (2) 10 mm (0.39 in)      (3) 40 mm (1.57 in)

### • Trunk

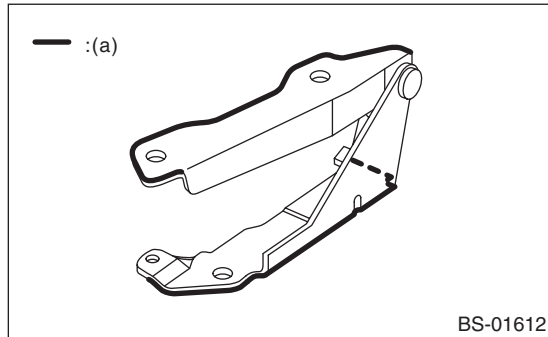


- (a) Application thickness = 50  $\mu\text{m}$  or more      (b) Application area more

- (1) Wax application work openings      (2) 10 mm (0.39 in)      (3) 40 mm (1.57 in)

- Front hood hinge

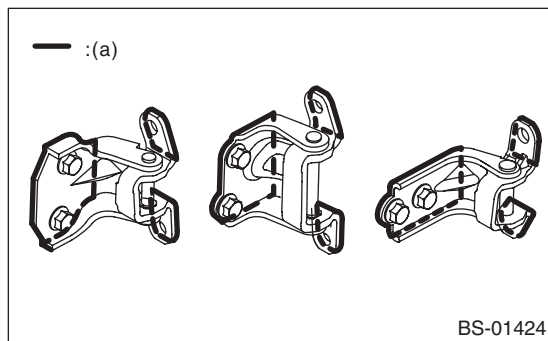
Apply around the installation outer circumference (indicated range) at two locations on the left and right.



(a) Application thickness = 15  $\mu\text{m}$  or more

- Door hinge

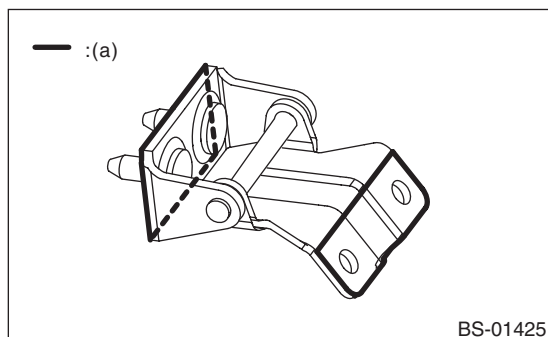
Apply to the installation outer circumference at two locations at the top and bottom (all eight locations).



(a) Application thickness = 15  $\mu\text{m}$  or more

- Rear gate hinge

Apply around the installation outer circumference (plate edges) at two locations on the left and right.

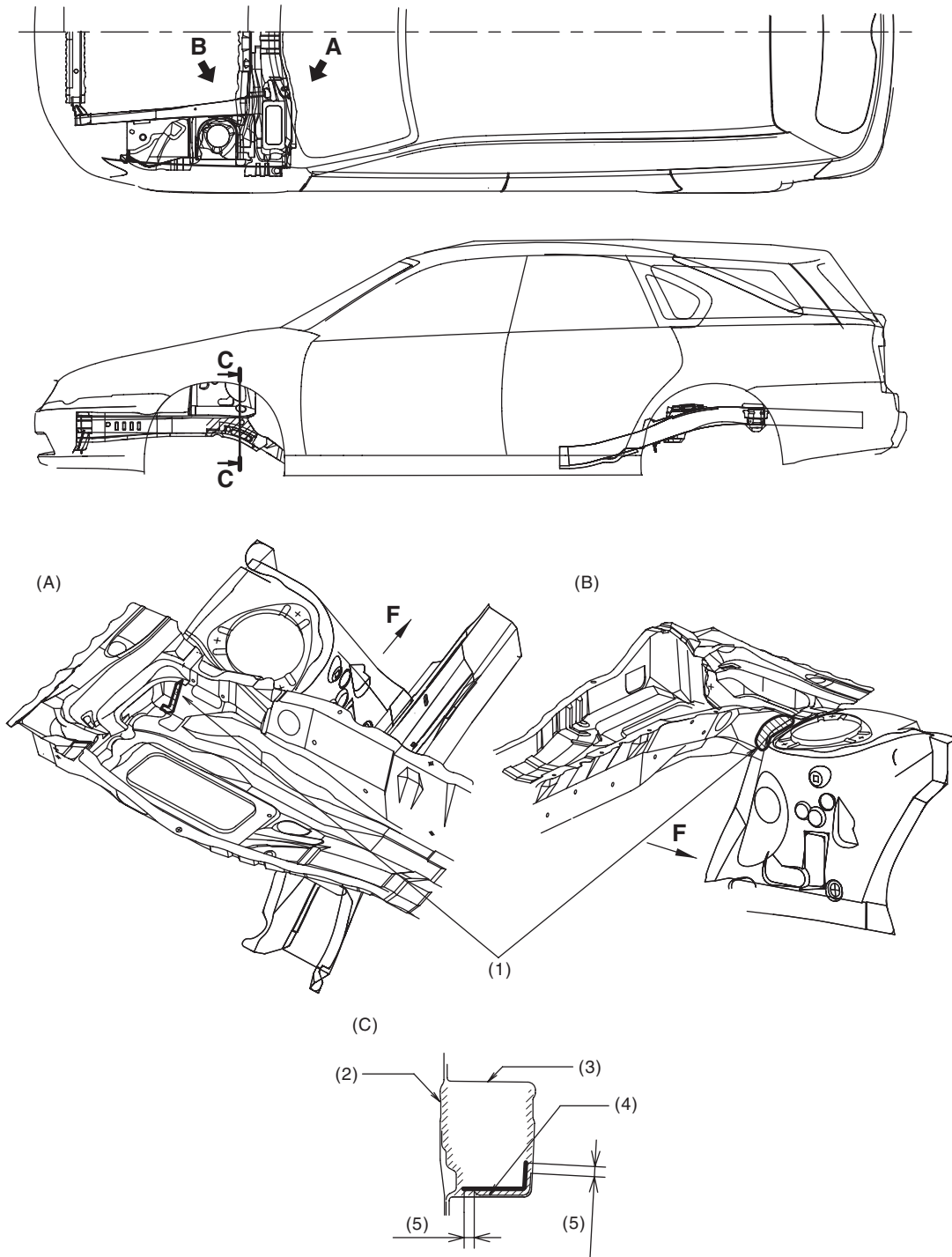


(a) Application thickness = 15  $\mu\text{m}$  or more

# Anticorrosion Wax

## BODY STRUCTURE

- Overall view



BS-01426

(A) View A

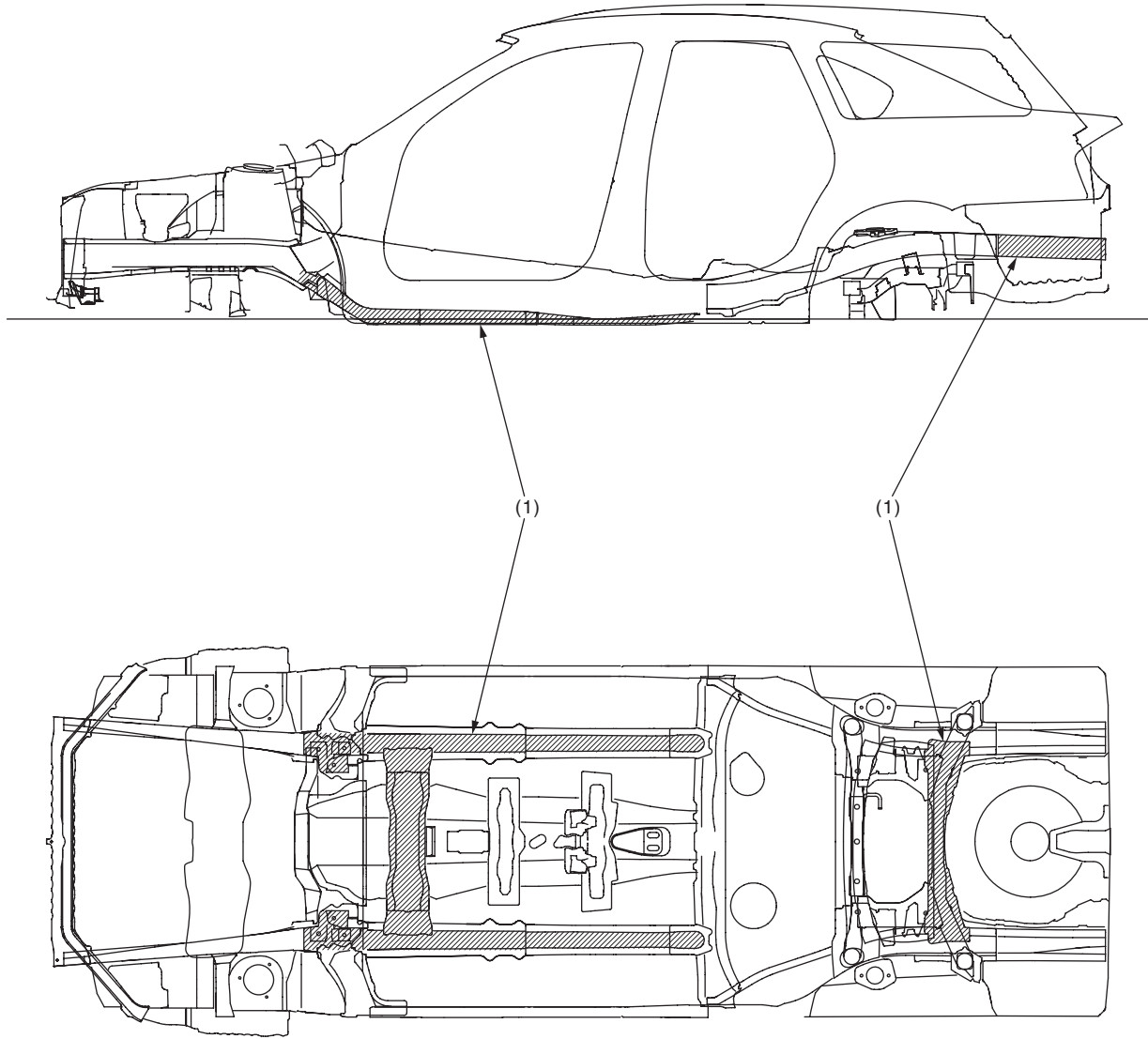
(B) View B

(C) Section C — C

(1) Apply to the contact surface between the front suspension bracket and duct. (15  $\mu$ m or more)

(2) Closing plate  
(3) Front side frame front

(4) Reinforcement  
(5) 10 mm (0.39 in)



BS-01609

- (1) Apply wax to the underside of vehicle.