

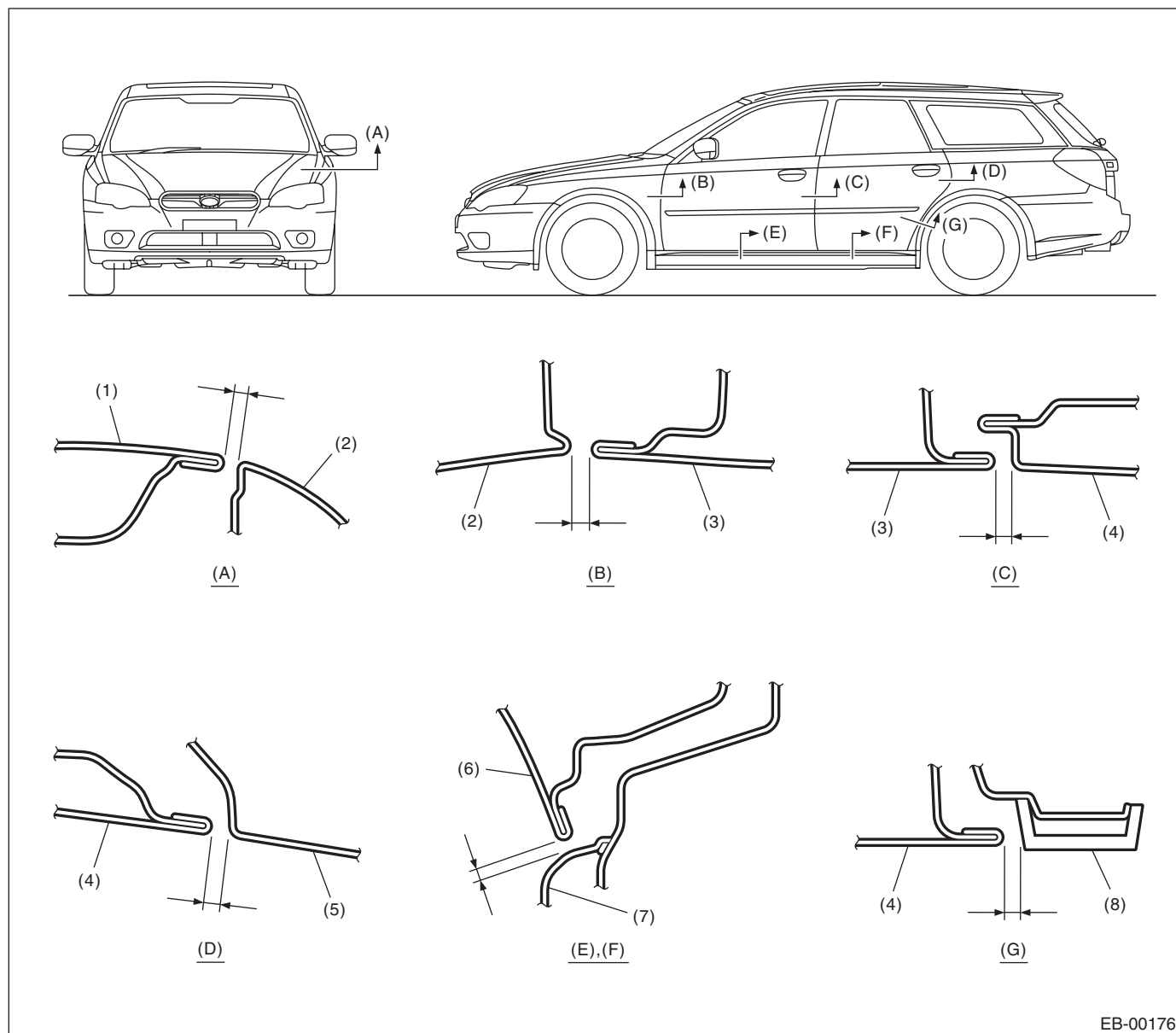
# General Description

## EXTERIOR BODY PANELS

### 1. General Description

#### A: SPECIFICATION

##### 1. SIDE

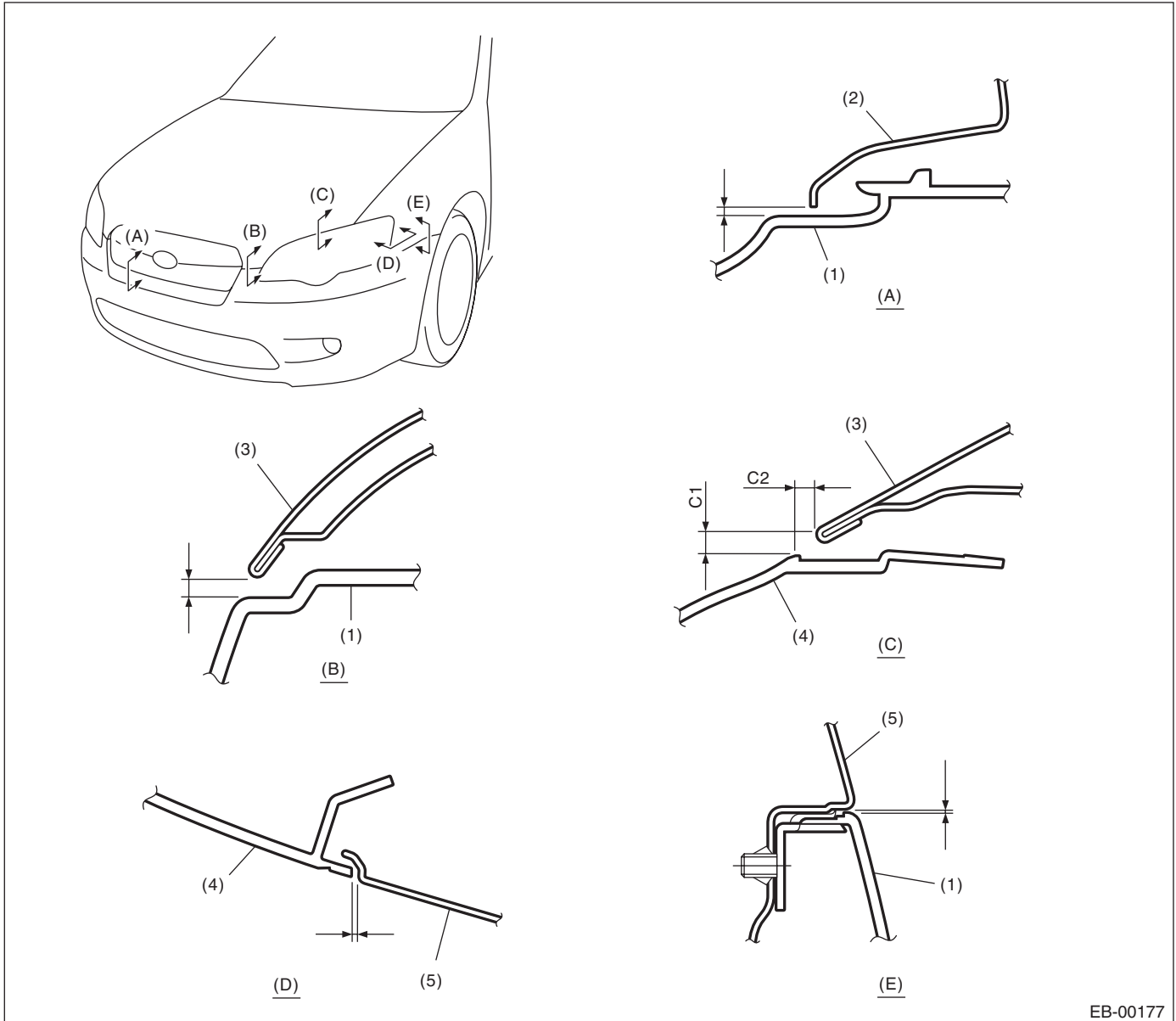


EB-00176

- |                        |                        |                                  |
|------------------------|------------------------|----------------------------------|
| (1) Front hood panel   | (4) Rear door panel    | (7) Side sill                    |
| (2) Front fender panel | (5) Rear quarter panel | (8) Rear quarter lower protector |
| (3) Front door panel   | (6) Door panel         |                                  |

Section	Part	Standard value
(A)	Front hood panel to Front fender panel	$3.5 \pm 1.0$ mm (0.14 $\pm$ 0.04 in)
(B)	Front fender panel to Front door panel	$4.7 \pm 1.0$ mm (0.18 $\pm$ 0.04 in)
(C)	Front door panel to Rear door panel	$5.1 \pm 1.0$ mm (0.20 $\pm$ 0.04 in)
(D)	Rear door panel to Rear quarter panel	$4.6 \pm 1.0$ mm (0.18 $\pm$ 0.04 in)
(E), (F)	Door panel to Side sill	$6.0 \pm 1.0$ mm (0.24 $\pm$ 0.04 in)
(G)	Rear door panel to Rear quarter lower protector	$4.8 \pm 1.0$ mm (0.19 $\pm$ 0.04 in)

### 2. FRONT



EB-00177

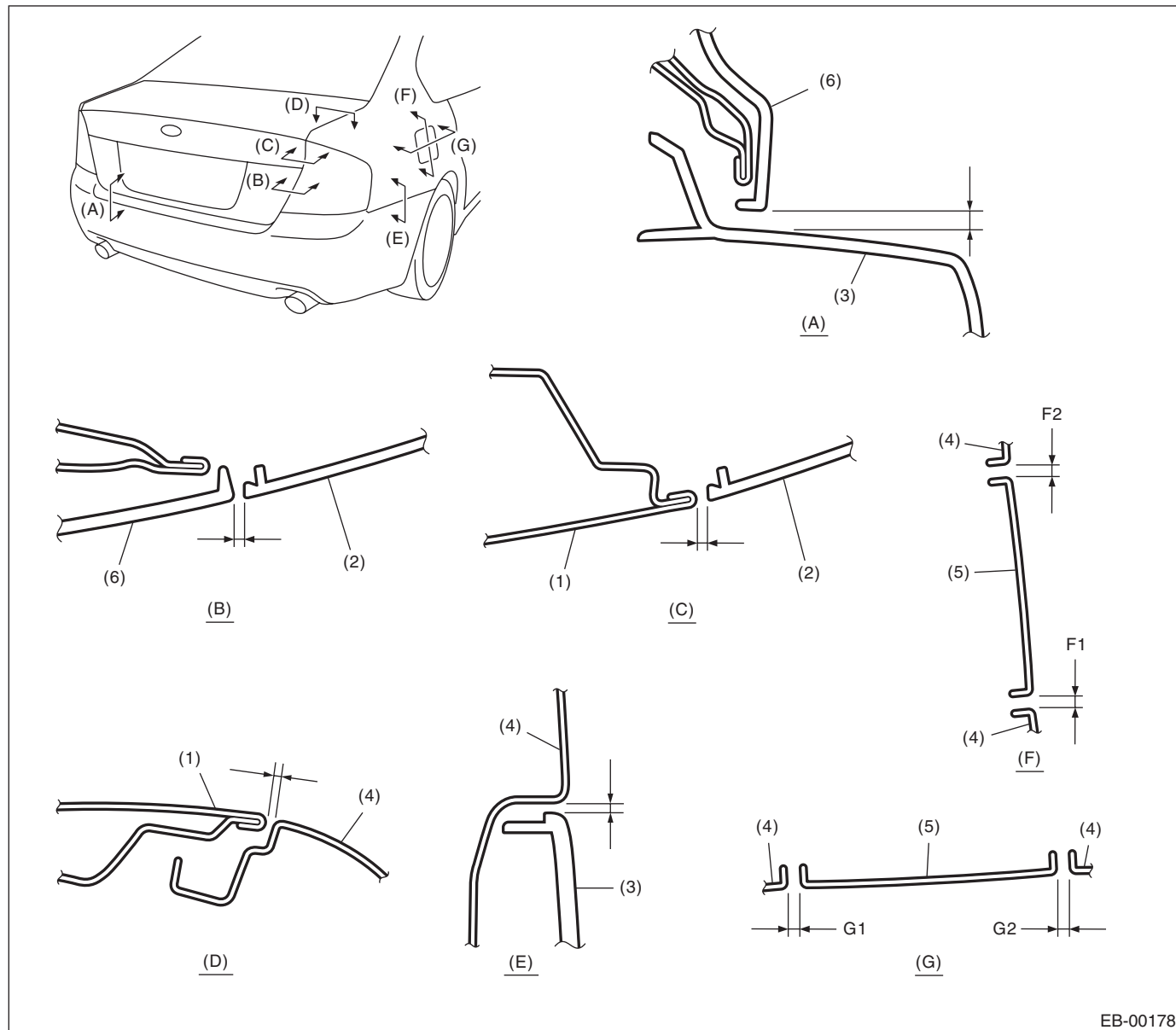
- |                  |                      |                        |
|------------------|----------------------|------------------------|
| (1) Front bumper | (3) Front hood panel | (5) Front fender panel |
| (2) Front grille | (4) Headlight        |                        |

Section	Part	Standard value
(A)	Front bumper to Front grille (longitudinal direction)	1.0±0.7 mm (0.04±0.03 in)
(B)	Front hood panel to Front bumper	4.0 — 6.0 mm (0.16 — 0.24 in)
(C)	Front hood panel to Headlight	C1: 6.0±1.0 mm (0.24±0.04 in) C2: 5.0±1.0 mm (0.20±0.04 in)
(D)	Front fender panel to Headlight	1.5±1.0 mm (0.06±0.04 in)
(E)	Front fender panel to Front bumper	1.0±0.7 mm (0.04±0.03 in)

# General Description

## EXTERIOR BODY PANELS

### 3. REAR (SEDAN MODEL)



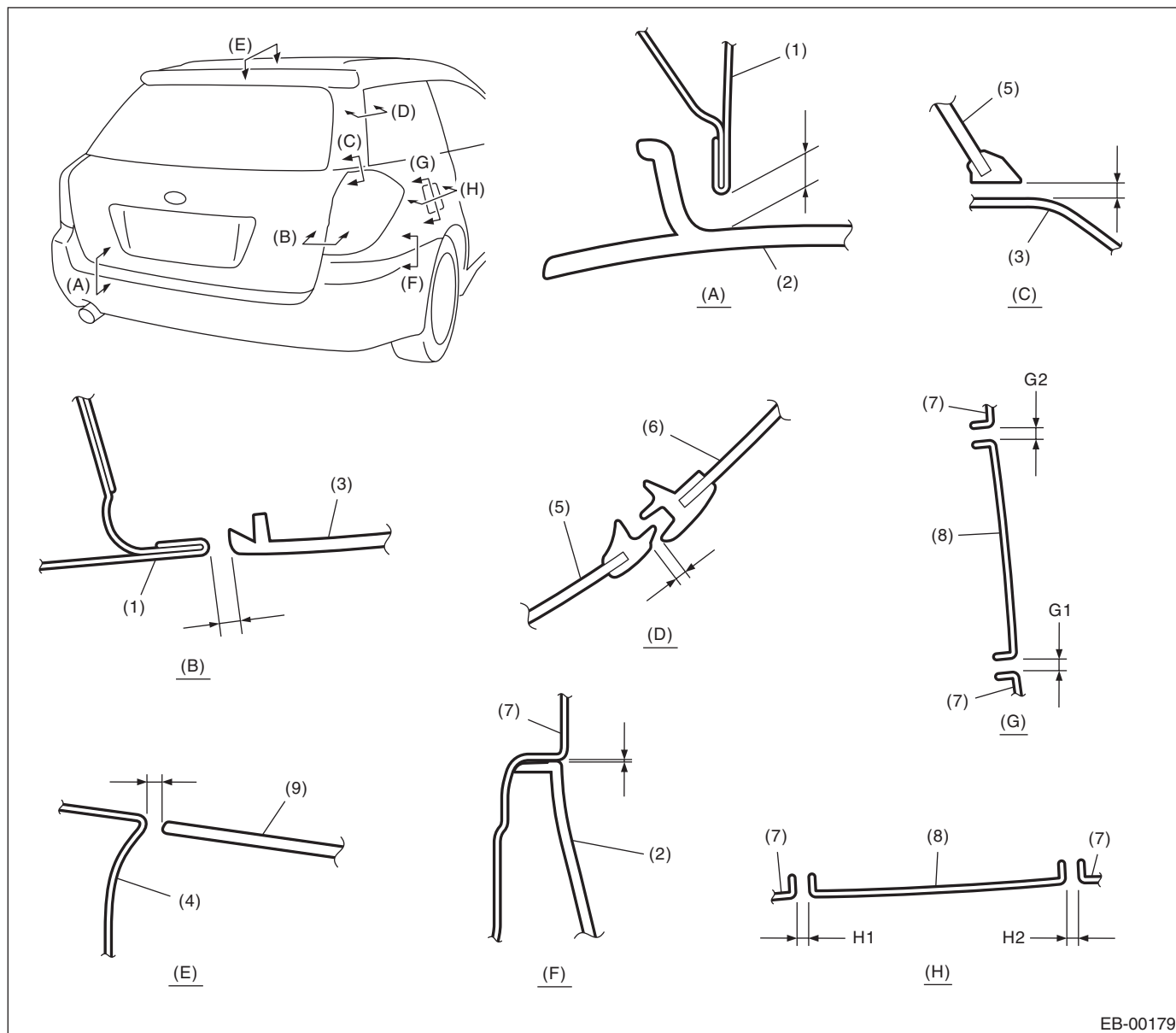
- (1) Trunk lid panel  
(2) Rear combination light

- (3) Rear bumper  
(4) Rear fender panel

- (5) Fuel filler flap lid  
(6) Trunk lid garnish

Section	Part	Standard value
(A)	Trunk lid garnish to Rear bumper	7.0±1.0 mm (0.28±0.04 in)
(B)	Trunk lid garnish to Rear combination light	4.0±1.0 mm (0.16±0.04 in)
(C)	Trunk lid panel to Rear combination light	3.5±1.0 mm (0.14±0.04 in)
(D)	Trunk lid panel to Rear fender panel	3.5±1.0 mm (0.14±0.04 in)
(E)	Rear fender panel to Rear bumper	1.0±0.7 mm (0.04±0.03 in)
(F)	Rear fender panel to Fuel filler flap lid (longitudinal direction)	F1: 3.7±0.5 mm (0.15±0.02 in) F2: 3.4±0.5 mm (0.13±0.02 in)
(G)	Rear fender panel to Fuel filler flap lid (lateral direction)	G1, G2: 3.5±0.5 mm (0.14±0.02 in)

### 4. REAR (WAGON MODEL)



EB-00179

- |                            |                        |                          |
|----------------------------|------------------------|--------------------------|
| (1) Rear gate panel        | (4) Roof panel         | (7) Rear fender panel    |
| (2) Rear bumper            | (5) Rear gate glass    | (8) Fuel filler flap lid |
| (3) Rear combination light | (6) Rear quarter glass | (9) Roof spoiler         |

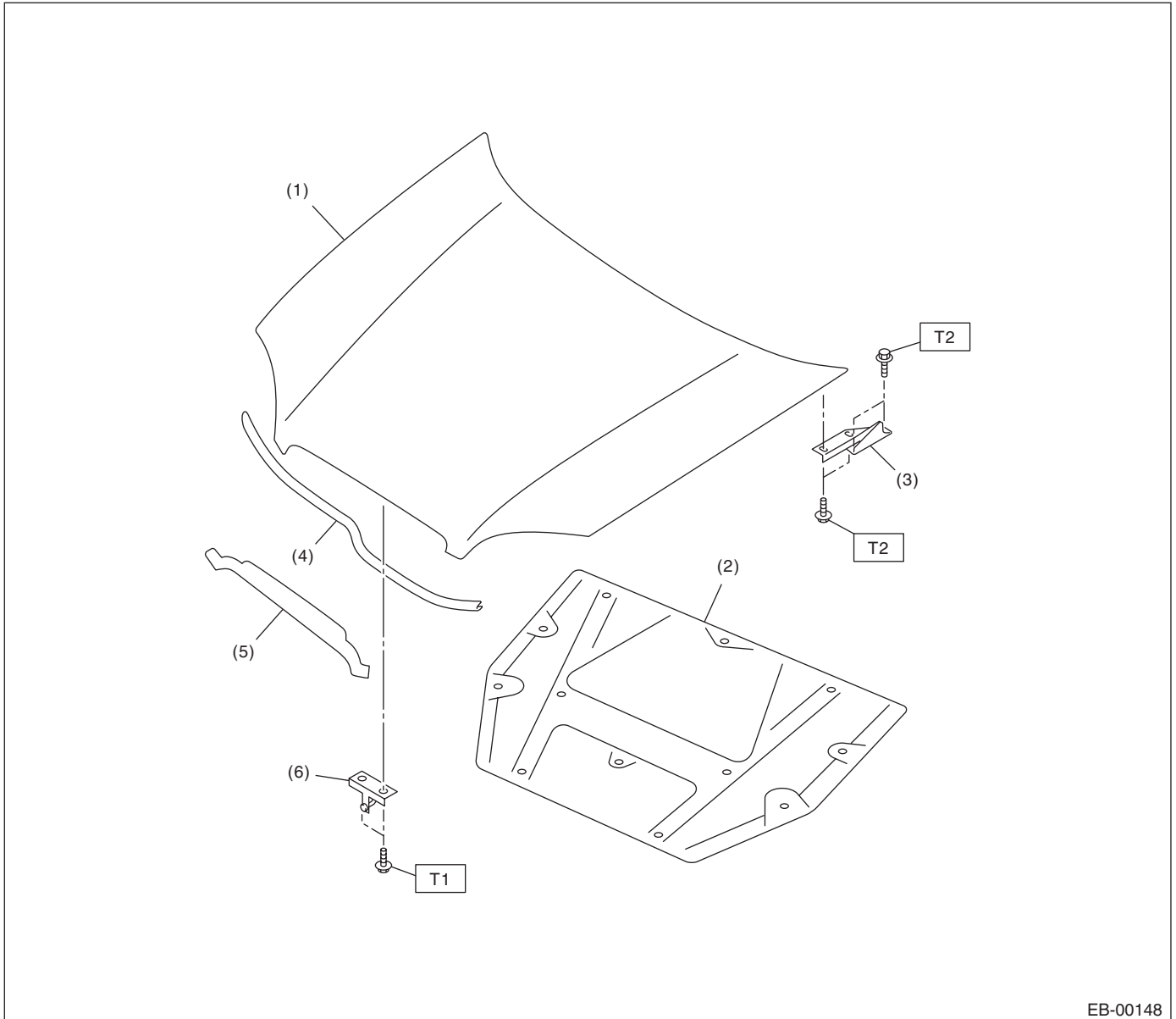
Section	Part	Standard value
(A)	Rear gate panel to Rear bumper	8.0±1.0 mm (0.31±0.04 in)
(B)	Rear gate panel to Rear combination light	5.0±1.0 mm (0.20±0.04 in)
(C)	Rear gate glass to Rear combination light	5.5±1.0 mm (0.22±0.04 in)
(D)	Rear gate glass to the Rear quarter glass	4.0±1.5 mm (0.16±0.06 in)
(E)	Roof panel to Roof spoiler	5.0 — 6.5 mm (0.20 — 0.26 in)
(F)	Rear fender panel to Rear bumper	1.0±0.7 mm (0.04±0.03 in)
(G)	Rear fender panel to Fuel filler flap lid (longitudinal direction)	G1: 3.7±0.5 mm (0.15±0.02 in) G2: 3.4±0.5 mm (0.13±0.02 in)
(H)	Rear fender panel to Fuel filler flap lid (lateral direction)	H1, H2: 3.5±0.5 mm (0.14±0.02 in)

# General Description

## EXTERIOR BODY PANELS

### B: COMPONENT

#### 1. FRONT HOOD



EB-00148

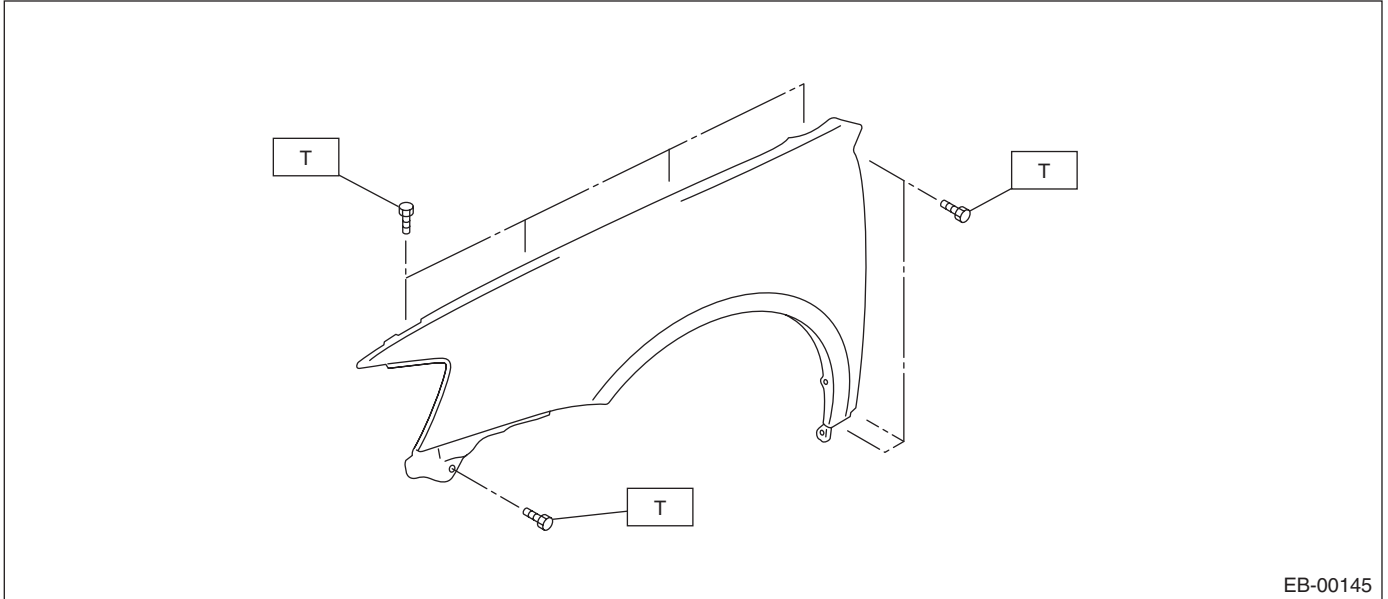
- |                          |                               |
|--------------------------|-------------------------------|
| (1) Front hood panel     | (4) Intake duct weather strip |
| (2) Front hood insulator | (5) Front hood weather strip  |
| (3) Front hood hinge     | (6) Front hood striker        |

**Tightening torque: N·m (kgf-m, ft-lb)**

**T1: 33 (3.4, 24.5)**

**T2: 24.5 (2.5, 18.1)**

## 2. FRONT FENDER PANEL



EB-00145

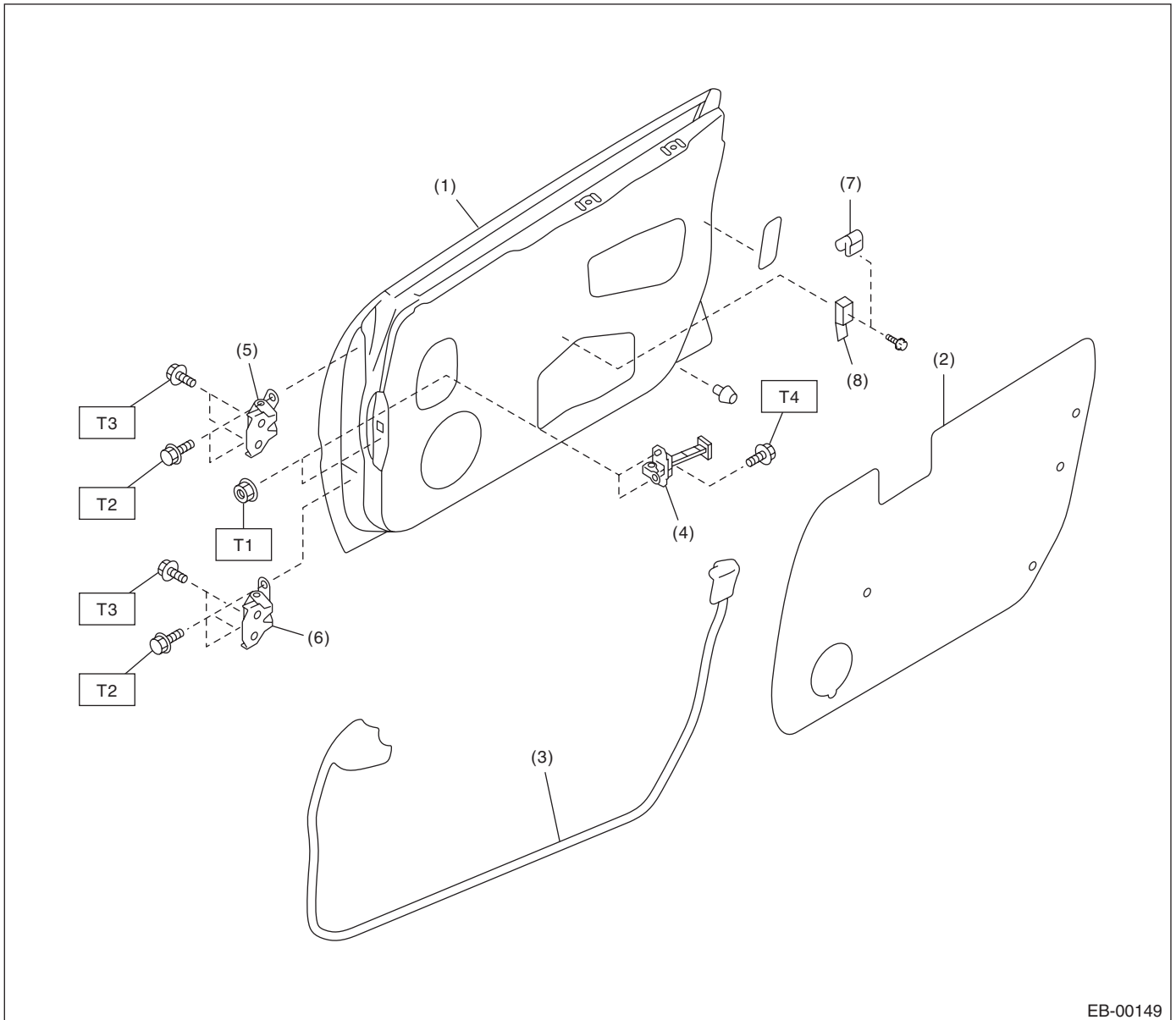
***Tightening torque:N·m (kgf-m, ft-lb)***

***T: 7.4 (0.75, 5.5)***

# General Description

## EXTERIOR BODY PANELS

### 3. FRONT DOOR PANEL



EB-00149

- |                              |                             |
|------------------------------|-----------------------------|
| (1) Front door panel         | (6) Lower hinge             |
| (2) Sealing cover            | (7) Door trim bracket upper |
| (3) Front door weather strip | (8) Door trim bracket lower |
| (4) Checker                  |                             |
| (5) Upper hinge              |                             |

#### ***Tightening torque: N·m (kgf-m, ft-lb)***

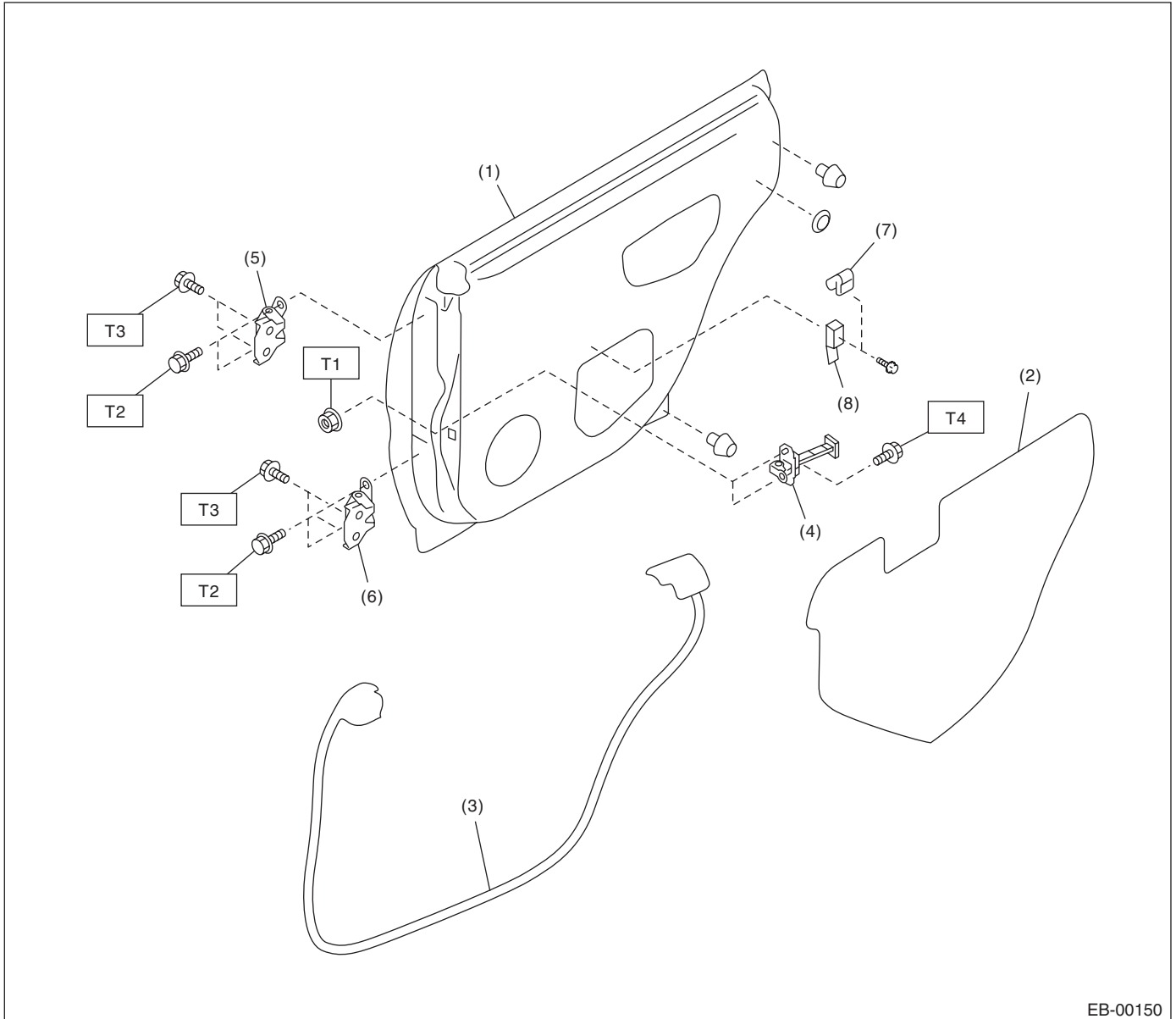
***T1: 7.4 (0.75, 5.5)***

***T2: 24.5 (2.5, 18.1)***

***T3: 29.4 (3.0, 21.7)***

***T4: 32.3 (3.3, 23.8)***

### 4. REAR DOOR PANEL



EB-00150

- |                             |                             |
|-----------------------------|-----------------------------|
| (1) Rear door panel         | (6) Lower hinge             |
| (2) Sealing cover           | (7) Door trim bracket upper |
| (3) Rear door weather strip | (8) Door trim bracket lower |
| (4) Checker                 |                             |
| (5) Upper hinge             |                             |

**Tightening torque: N·m (kgf-m, ft-lb)**

**T1: 7.4 (0.75, 5.5)**

**T2: 24.5 (2.5, 18.1)**

**T3: 29.4 (3.0, 21.7)**

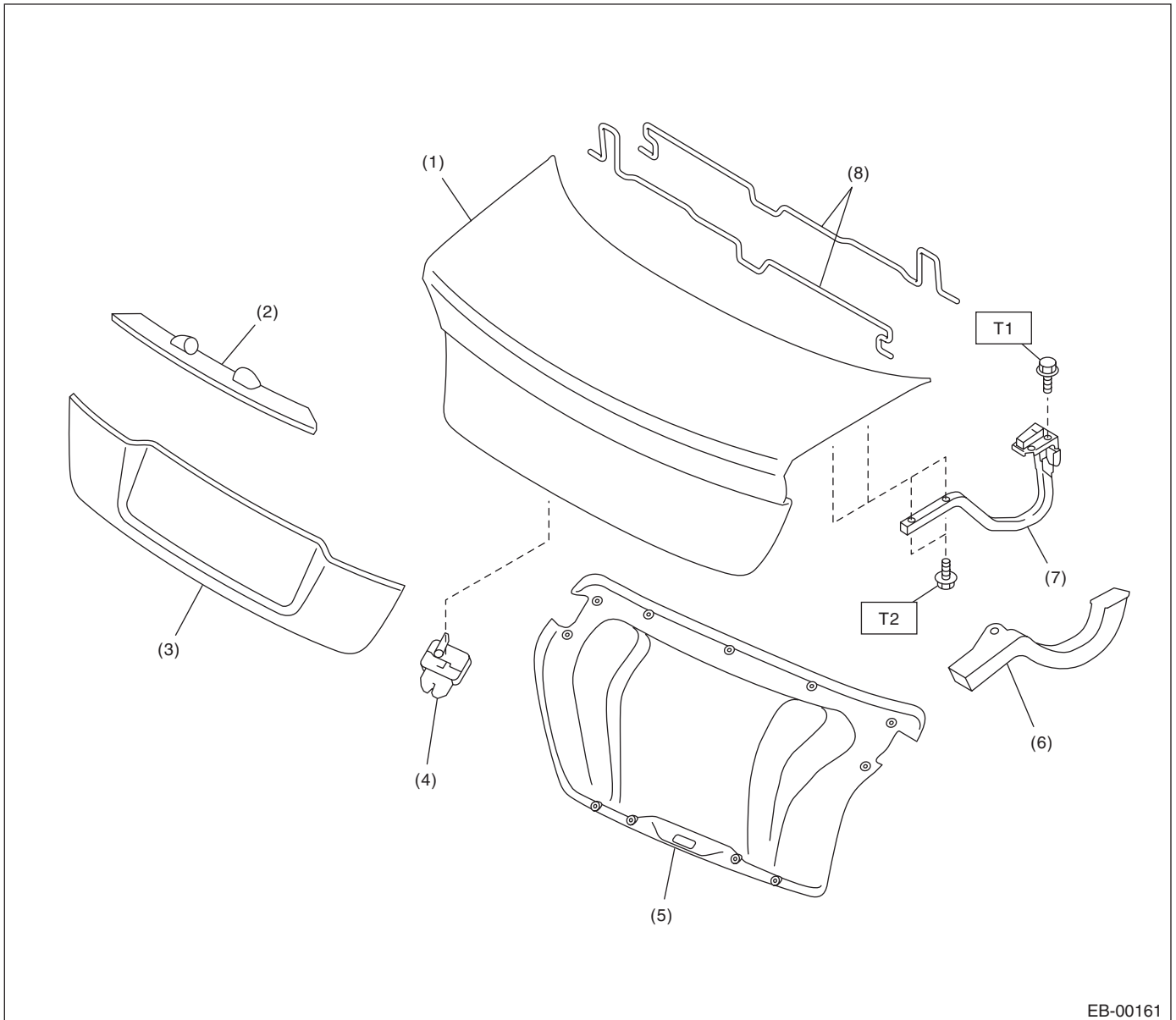
**T4: 32.3 (3.3, 23.8)**



# General Description

## EXTERIOR BODY PANELS

### 5. TRUNK LID PANEL



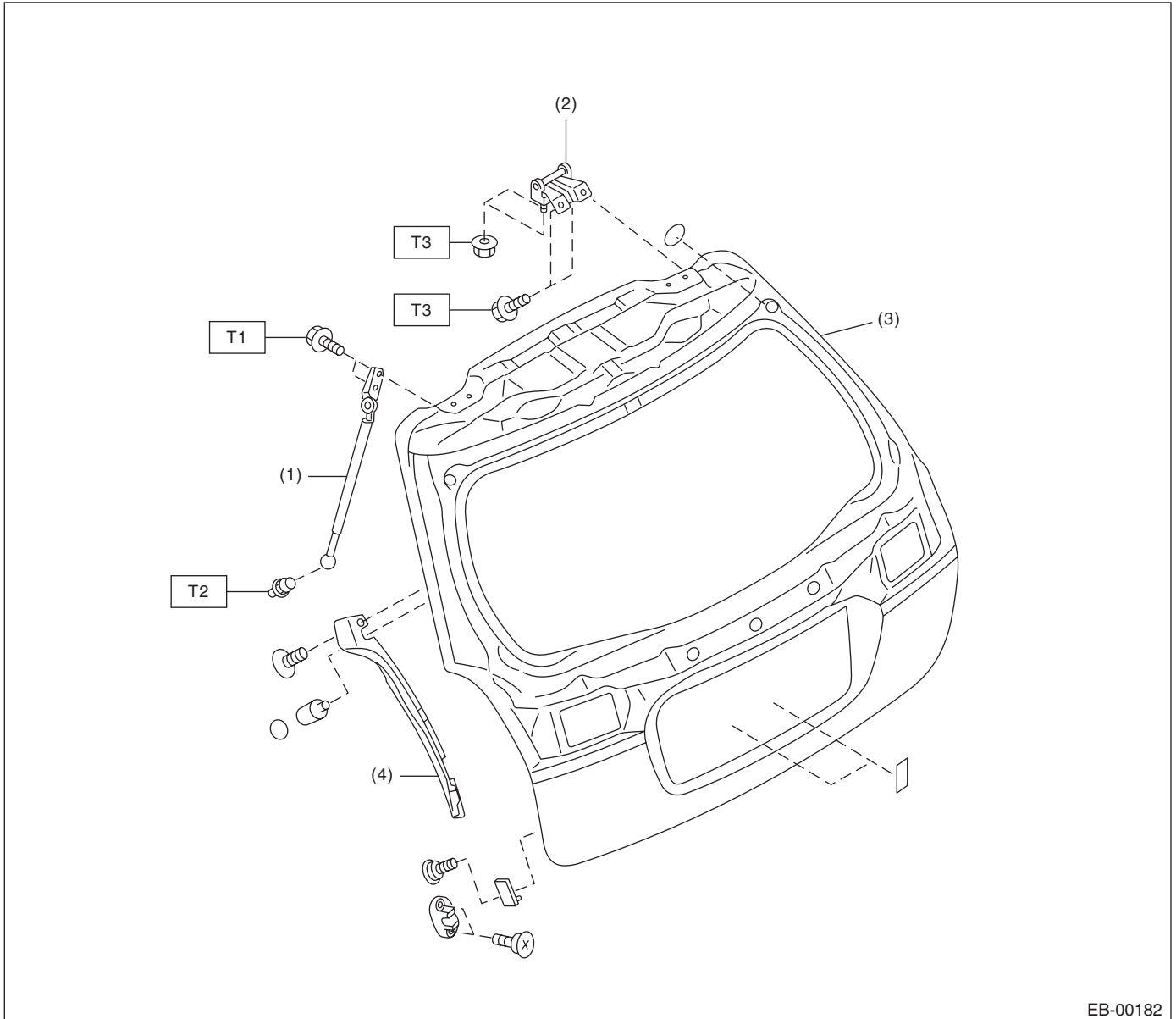
- |                               |                         |
|-------------------------------|-------------------------|
| (1) Trunk lid panel           | (5) Trunk lid trim      |
| (2) License plate light cover | (6) Trunk lid arm cover |
| (3) Trunk lid garnish         | (7) Trunk lid arm ASSY  |
| (4) Trunk lid lock ASSY       | (8) Torsion bar         |

**Tightening torque: N·m (kgf-m, ft-lb)**

**T1: 17.6 (1.8, 12.9)**

**T2: 14 (1.43, 10.3)**

## 6. REAR GATE PANEL



EB-00182

- (1) Rear gate damper stay
- (2) Hinge
- (3) Rear gate panel
- (4) Rear gate side panel cover

**Tightening torque: N·m (kgf-m, ft-lb)**

**T1: 7.5 (0.76, 5.5)**

**T2: 14 (1.43, 10.3)**

**T3: 25 (2.6, 18.4)**

### C: CAUTION

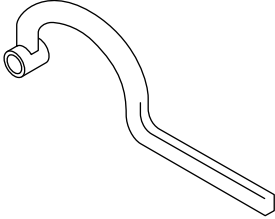
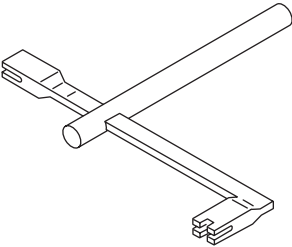
- Exterior body panels are heavy. Do not drop and damage the panels. During removal and installation, do not damage the panel painting surface.
- While removing mounting bolts, using assistance devices such as a support jack will help support the panel.
- Be careful not to lose small parts.

## General Description

### EXTERIOR BODY PANELS

## D: PREPARATION TOOL

### 1. SPECIAL TOOL

ILLUSTRATION	TOOL NUMBER	DESCRIPTION	REMARKS
 ST-925610000	925610000	WRENCH	Used for removing and installing door hinge.
 ST-927780000	927780000	REMOVER	Used for removing and installing the trunk torsion bar.

### 2. GENERAL TOOL

TOOL NAME	REMARKS
Support jack	Used for supporting door panel.
Clip remover	Used for removing various types of clips.