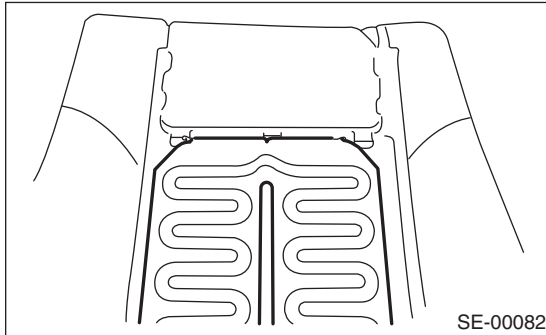


4. Seat Heater System

A: REMOVAL

1. SEAT HEATER UNIT

- 1) Remove the front seats. <Ref. to SE-9, REMOVAL, Front Seat.>
- 2) Remove the backrest cover of front seat and seat cushion cover. <Ref. to SE-9, DISASSEMBLY, Front Seat.>
- 3) Remove the hog rings, and then remove the seat heater unit.



2. SEAT HEATER SWITCH

- 1) Remove the console box. <Ref. to EI-51, REMOVAL, Console Box.>
- 2) Remove the seat heater switch from the console box.

B: INSTALLATION

Install in the reverse order of removal.

C: INSPECTION

1. WIRING DIAGRAM

<Ref. to WI-119, WIRING DIAGRAM, Power Seat System.>

2. SEAT HEATER UNIT

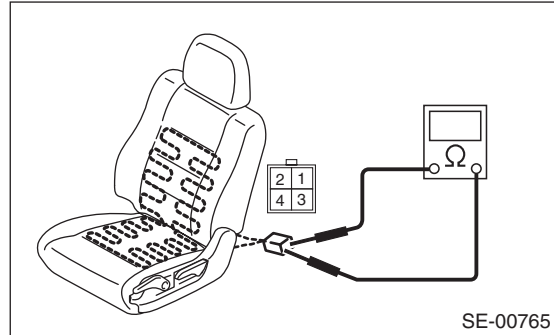
Disconnect the seat heater unit connector, and check the continuity between terminals of connector.

Connector & terminal

No. 1 — No. 3:

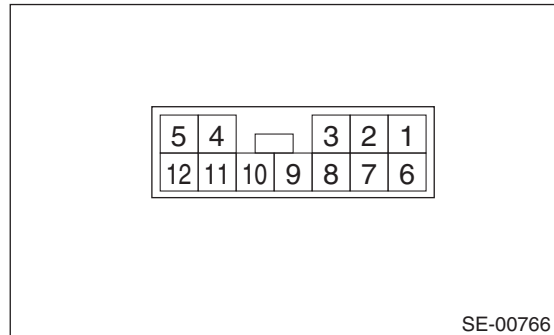
No. 1 — No. 4:

No. 3 — No. 4:



If no continuity exists, replace the seat heater unit with a new part.

3. SEAT HEATER SWITCH



• CHECK THERMISTOR OUTPUT VOLTAGE

- 1) Connect the battery to the connector.

With SI-DRIVE

Connector terminals No. 12 (+):

Without SI-DRIVE

Connector terminals No. 11 (+):

2) Measure the voltage between connector and chassis ground.

Connector & terminal:

With SI-DRIVE

LHD side seat

(C2) No. 8 (+) — Chassis ground (-):

RHD side seat

(C2) No. 6 (+) — Chassis ground (-):

Without SI-DRIVE

LHD side seat

(C2) No. 2 (+) — Chassis ground (-):

RHD side seat

(C2) No. 4 (+) — Chassis ground (-):

If voltage is not 1.5 V or more, replace the seat heater switch.

• CHECK SWITCH OUTPUT VOLTAGE

1) Connect the battery to the connector.

With SI-DRIVE

Connector terminals No. 12 (+):

Without SI-DRIVE

Connector terminals No. 11 (+):

2) Measure the voltage between connector and chassis ground when turning the switch to other than OFF position.

Connector & terminal:

With SI-DRIVE

LHD side seat

(C2) No. 11 (+) — Chassis ground (-):

RHD side seat

(C2) No. 10 (+) — Chassis ground (-):

Without SI-DRIVE

LHD side seat

(C2) No. 10 (+) — Chassis ground (-):

RHD side seat

(C2) No. 5 (+) — Chassis ground (-):

If voltage does not change from 10 V or more to zero, replace the seat heater switch.