

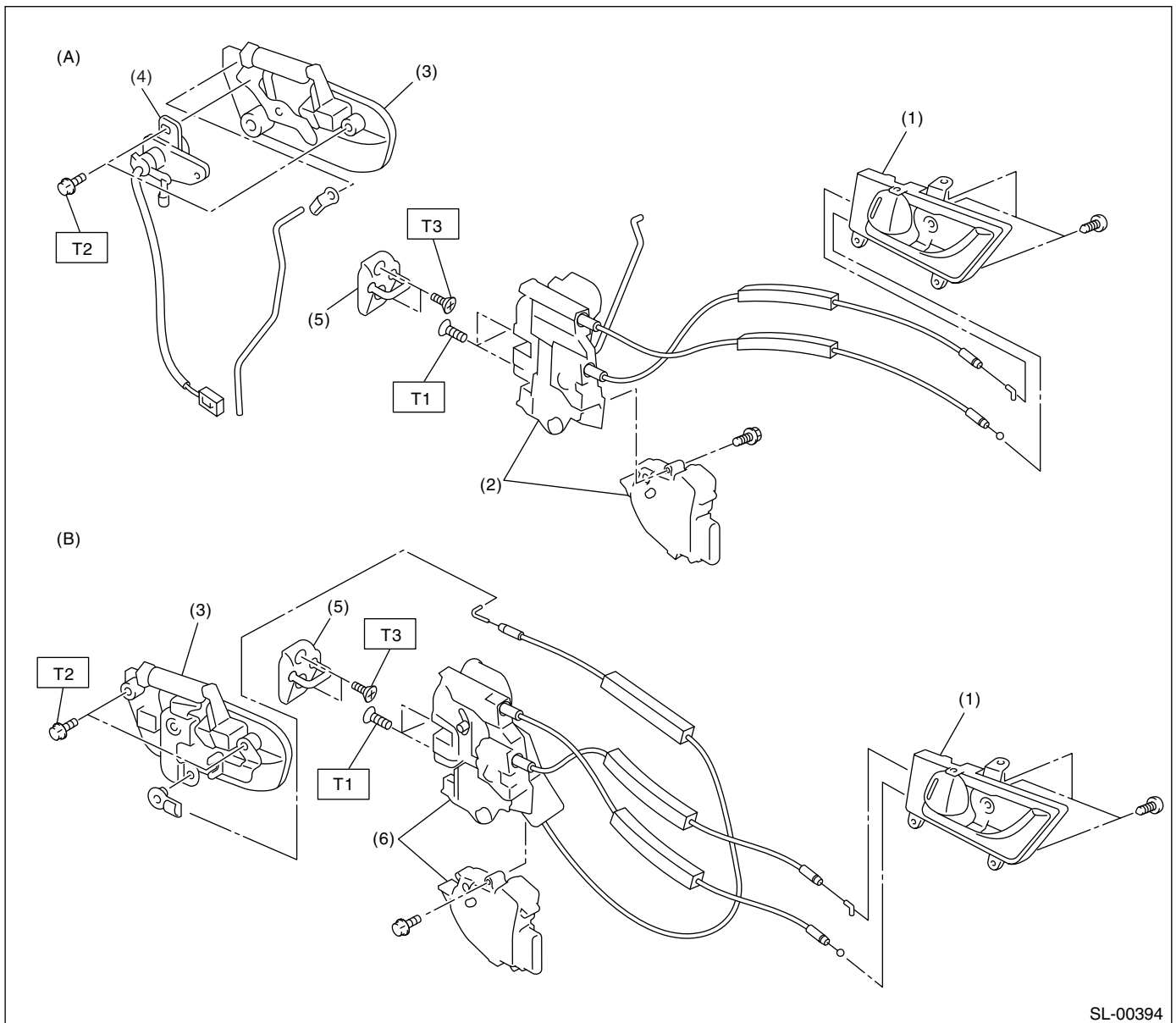
General Description

SECURITY AND LOCKS

1. General Description

A: COMPONENT

1. DOOR LOCK ASSEMBLY



SL-00394

(A) Front

(B) Rear

(1) Inner remote ASSY

(2) Front door latch and door lock actuator ASSY

(3) Door outer handle

(4) Key cylinder (switch)

(5) Striker

(6) Rear door latch and door lock actuator ASSY

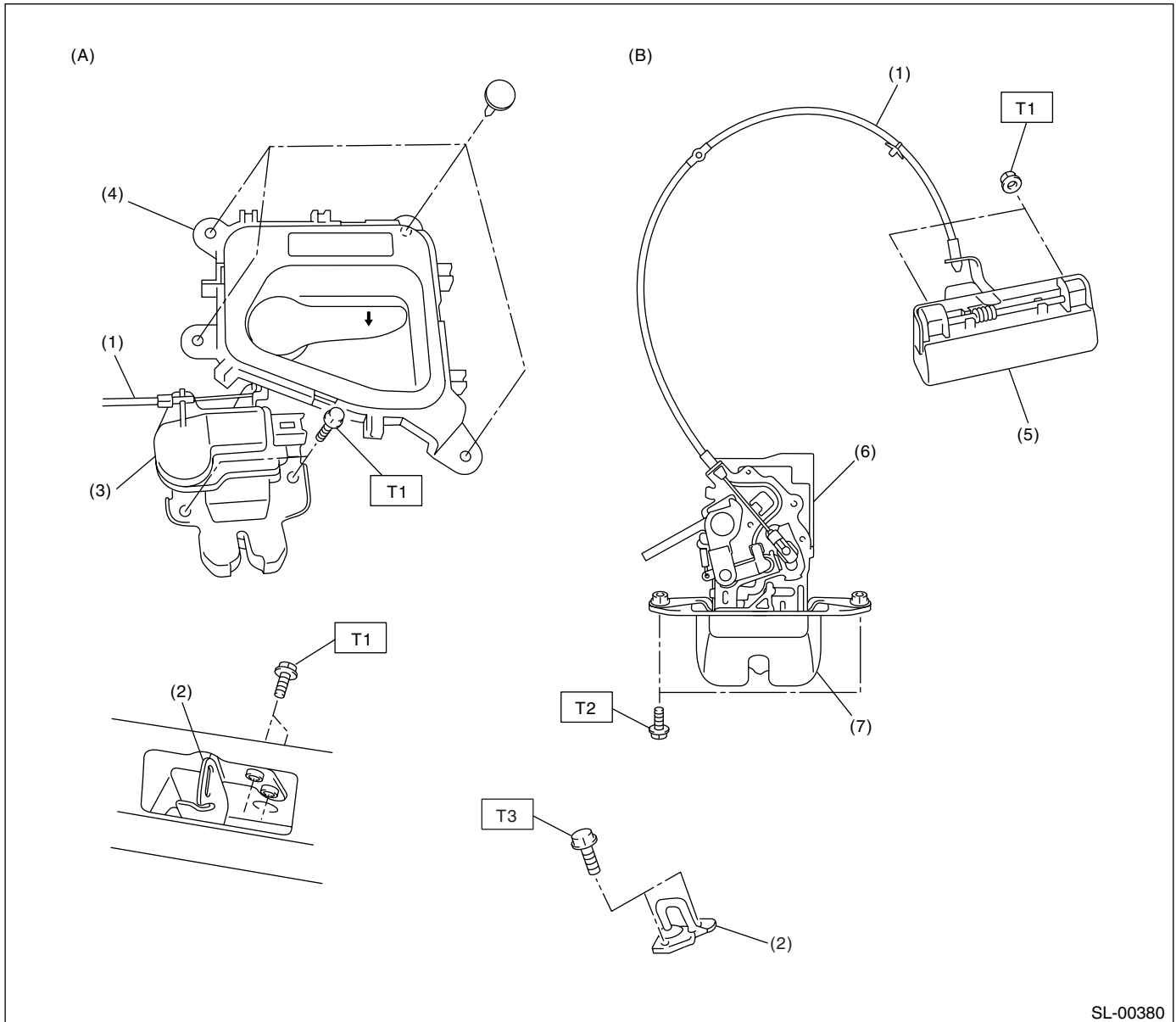
Tightening torque: N·m (kgf-m, ft-lb)

T1: 6.5 (0.66, 4.8)

T2: 7.5 (0.76, 5.5)

T3: 18 (1.8, 13.3)

2. TRUNK LID AND REAR GATE LOCK



SL-00380

(A) Trunk

(B) Rear gate

- (1) Cable
- (2) Striker
- (3) Trunk lid lock ASSY
- (4) Trunk lid release handle

- (5) Rear gate outer handle
- (6) Rear gate actuator
- (7) Rear gate latch

Tightening torque: N·m (kgf-m, ft-lb)

T1: 7.5 (0.76, 5.5)

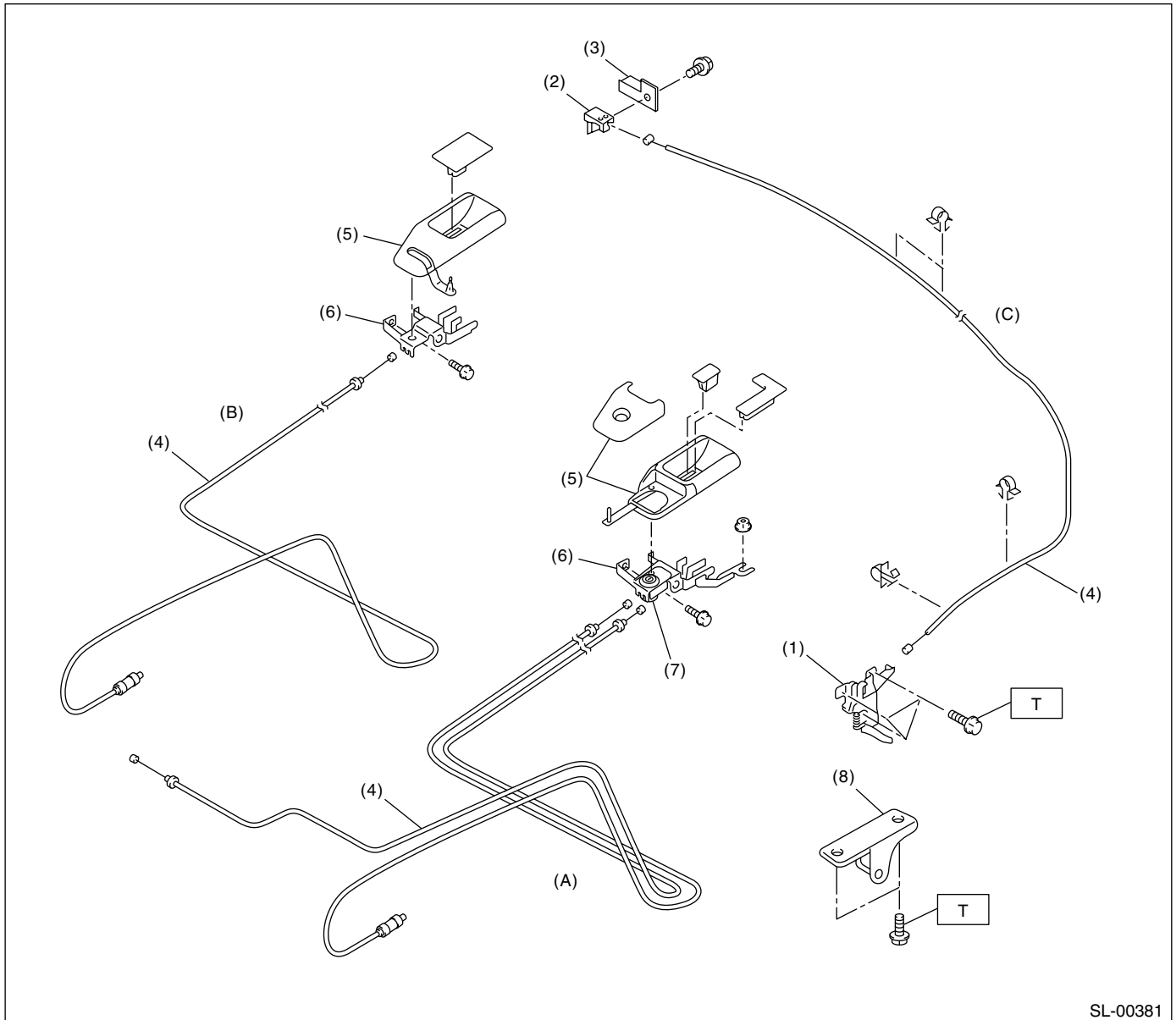
T2: 18 (1.8, 13.3)

T3: 25 (2.5, 18.4)

General Description

SECURITY AND LOCKS

3. FRONT HOOD LOCK AND REMOTE OPENERS



(A) Sedan model

(B) Wagon model

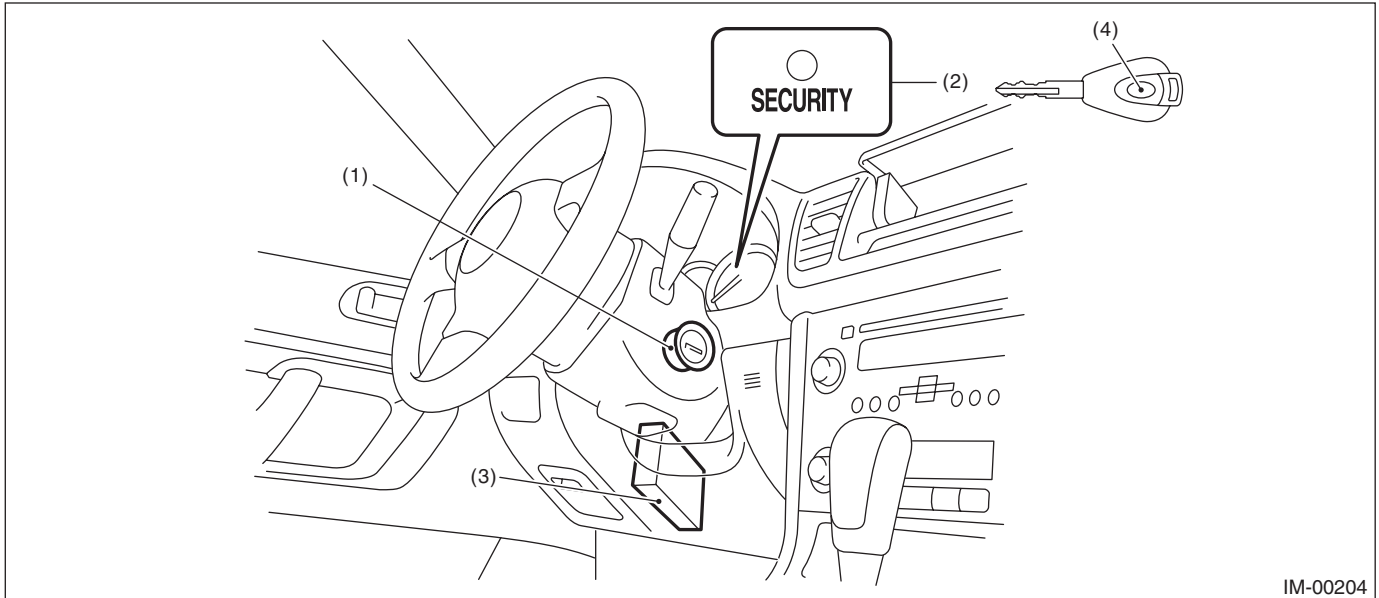
(C) Hood

- (1) Front hood lock ASSY
- (2) Lever ASSY
- (3) Lever ASSY bracket
- (4) Cable

- (5) Cover
- (6) Pull handle ASSY
- (7) Key cylinder
- (8) Striker

Tightening torque: N·m (kgf-m, ft-lb)
T: 33 (3.36, 24.2)

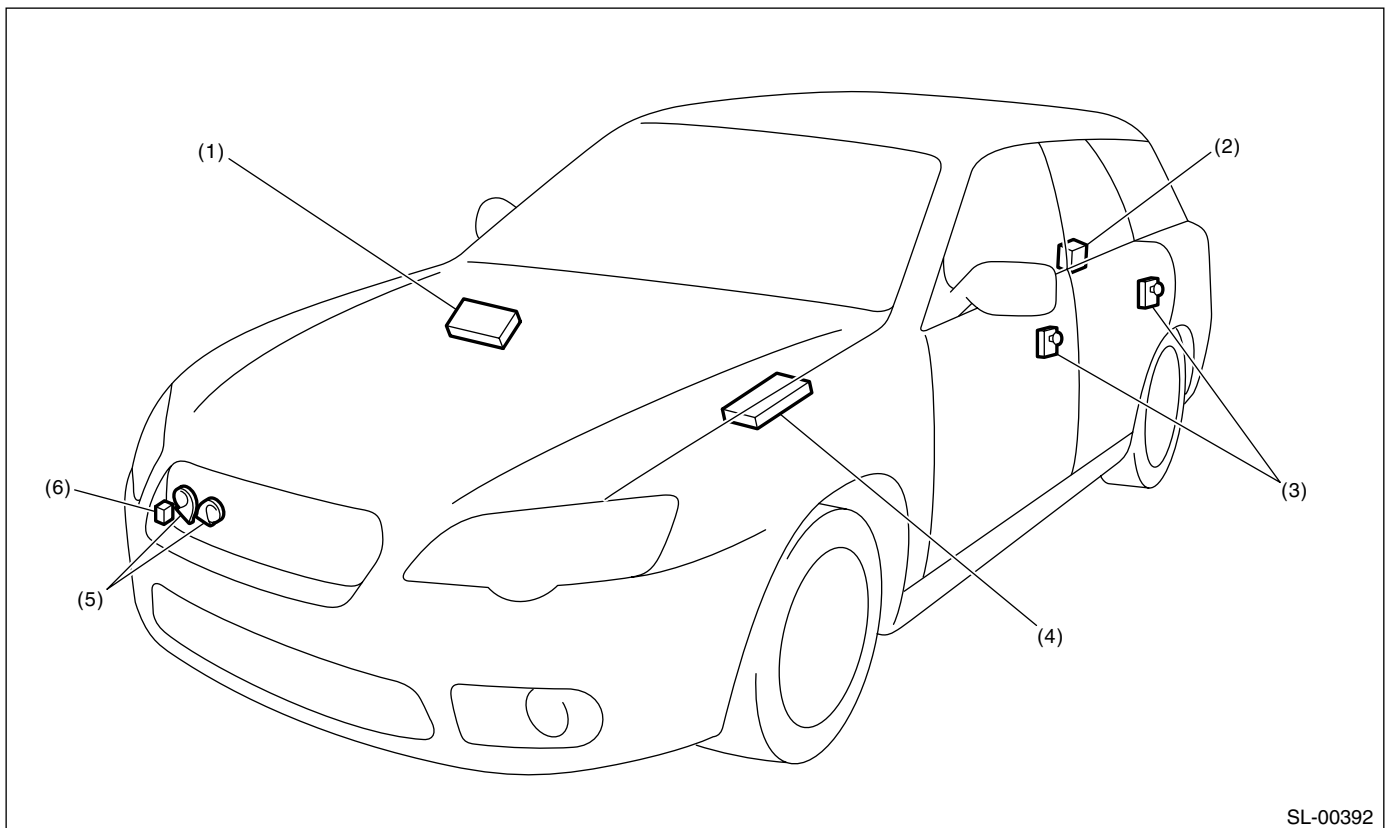
4. IMMOBILIZER SYSTEM



IM-00204

- | | | |
|---|--------------------------|-----------------|
| (1) Antenna | (3) Body integrated unit | (4) Transponder |
| (2) Security indicator light (LED bulb) | | |

5. KEYLESS ENTRY SYSTEM



SL-00392

- | | | |
|--|--------------------------|--------------------|
| (1) Keyless entry control module | (3) Door switch | (5) Horn |
| (2) Rear gate latch switch (Wagon model) | (4) Body integrated unit | (6) Keyless buzzer |

General Description

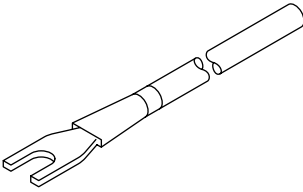
SECURITY AND LOCKS

B: CAUTION

- Before disassembling or reassembling parts, always disconnect the battery ground cable from battery. When repairing the audio, control module, etc. which are provided with memory functions, record the memory contents before disconnecting the ground cable from battery. Otherwise, these contents are erased upon disconnection.
- Reassemble the parts in the reverse order of disassembly unless otherwise indicated.
- Adjust the parts to the specifications described in this manual if so designated.
- Connect the connectors securely during reassembly.
- After reassembly, make sure all the functional parts operate smoothly.
- The airbag system wiring harness is routed near electrical parts and switches.
- Do not use the electrical test equipment on the airbag system wiring harnesses and connector circuits.
- Be careful not to damage the airbag system wiring harness when servicing the ignition key cylinder.

C: PREPARATION TOOL

1. SPECIAL TOOL

ILLUSTRATION	TOOL NUMBER	DESCRIPTION	REMARKS
 ST-925580000	925580000	PULLER	Used for removing trim clip

2. GENERAL TOOL

TOOL NAME	REMARKS
Circuit tester	Used for measuring resistance and voltage.
Drill	Used for replacing ignition key lock.
Clip remover	Used for removing trim.
Clip clamp pliers	Used for removal of various clips and clamps.