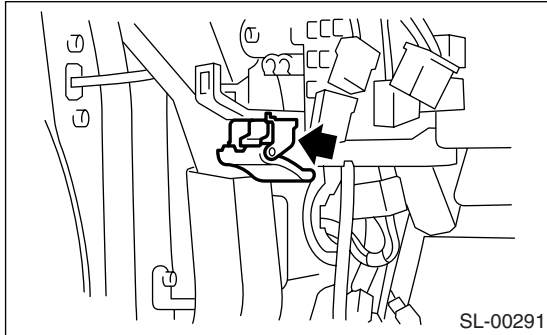


18.Remote Openers

A: REMOVAL

1. FRONT HOOD OPENER

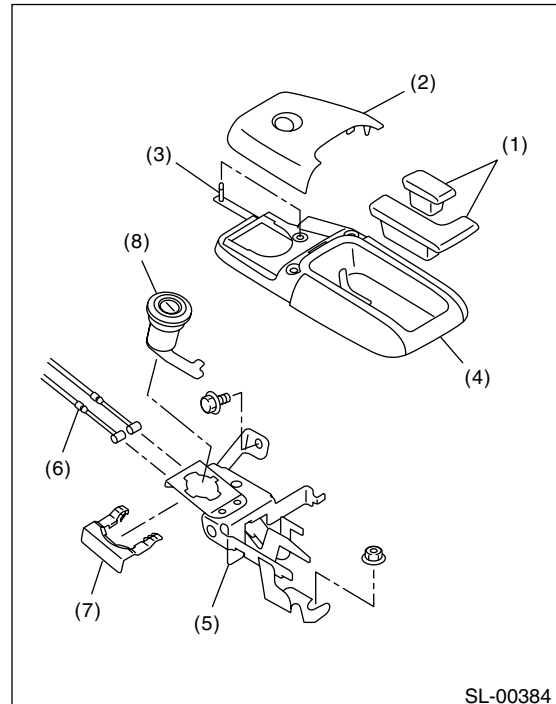
- 1) Remove the cable from the front hood lock.
- 2) Remove the bolt, and then detach the opener lever.



2. TRUNK LID OPENER

- 1) Remove the rear seat. <Ref. to SE-17, REMOVAL, Rear Seat.>
- 2) Remove the center pillar lower trim, side sill cover, rear pillar lower trim and floor mat on the driver's side. Remove the clip holding the cable.
- 3) Remove the opener lever (1) and rear cover (2).
- 4) Remove the pin (3) and remove front cover (4).

- 5) Remove the bolt and nut, and remove the pull handle assembly (5).



- (1) Opener lever
- (2) Rear cover
- (3) Pin
- (4) Front cover
- (5) Pull handle ASSY
- (6) Cable
- (7) Clamp
- (8) Key cylinder

- 6) Remove the cable from the pull handle assembly (5).
- 7) Remove clamp (7) to remove the key cylinder (8).

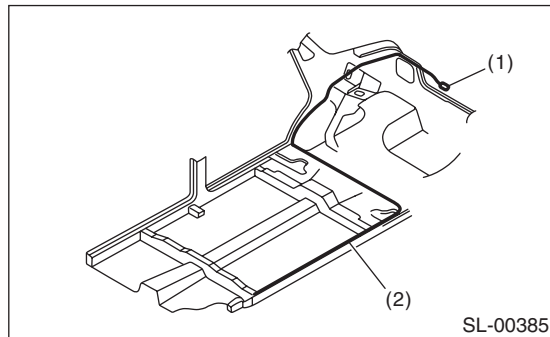
CAUTION:

Remove the key cylinder in the UNLOCK position.

Remote Openers

SECURITY AND LOCKS

- 8) Remove the trunk lid lock assembly from the trunk lid.
- 9) Remove the cable from the trunk lid lock assembly.



- (1) Trunk lid lock ASSY
- (2) Cable

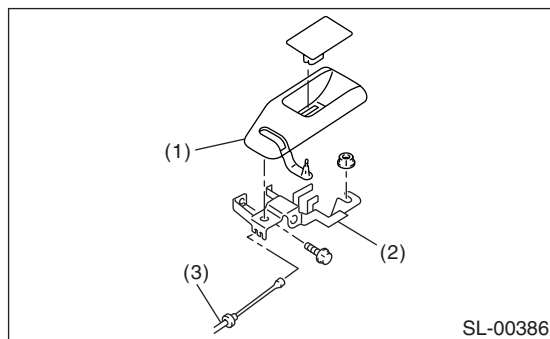
3. FUEL FILLER FLAP LID OPENER

Sedan

<Ref. to SL-45, TRUNK LID OPENER, REMOVAL, Remote Openers.>

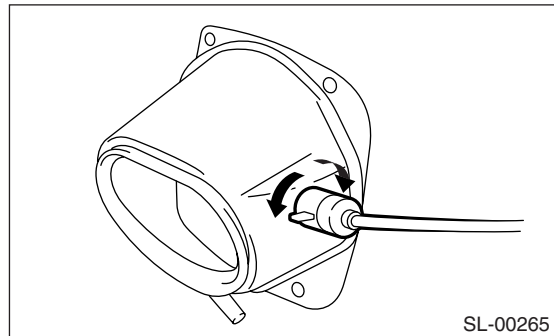
Wagon

- 1) Remove the rear seat. <Ref. to SE-17, REMOVAL, Rear Seat.>
- 2) Remove the center pillar lower trim, side sill cover, rear pillar lower trim and floor mat on the driver's side. Remove the clip holding the cable.
- 3) Remove the bolt and nut, and then detach the pull handle assembly.



- (1) Cover
- (2) Pull handle ASSY
- (3) Cable

- 4) Remove the cable from pull handle assembly.
- 5) Remove the rear quarter trim RH. <Ref. to EI-60, REMOVAL, Rear Quarter Trim.>
- 6) Rotate the fuel lock inside the quarter panel to 90° and remove. (Either right or left turn)



B: INSTALLATION

Install in the reverse order of removal.

CAUTION:

Install the key cylinder to the trunk lid in the UN-LOCK position.

C: INSPECTION

Make sure the front hood, trunk lid and fuel filler flap lid open and close smoothly.