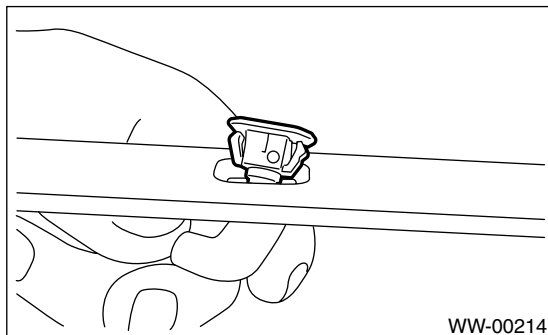


11.Rear Washer

A: REMOVAL

- 1) Remove the roof spoiler. <Ref. to EI-40, REMOVAL, Roof Spoiler.>
- 2) Remove the washer hose from washer nozzle.
- 3) Push the claw of the nozzle from the reverse side of roof spoiler with a flat tip screwdriver or equivalent, and remove the washer nozzle.



B: INSTALLATION

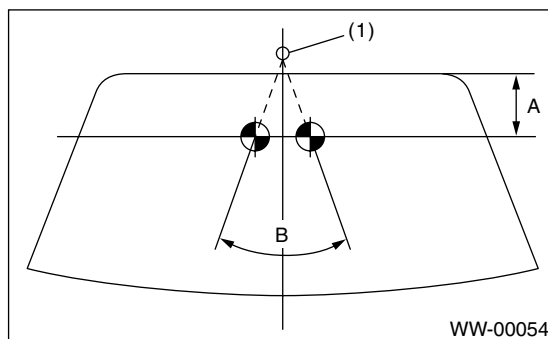
Install in the reverse order of removal.

C: INSPECTION

- Make sure the nozzle and hose are not clogged.
- Make sure the hose is not bent.
- While the vehicle is at a standstill, make sure that the washer injection position is as shown in the figure.

NOTE:

Washer injection position can not be adjusted.



- (1) Nozzle
(A) 70 mm (2.76 in)
(B) 70°

Rear Washer

WIPER AND WASHER SYSTEMS

	Page
1. General Description	2
2. Audio System	3
3. Front Accessory Power Supply Socket System	4
4. Rear Accessory Power Supply Socket System	5
5. Navigation System	6
6. Audio	8
7. Front Speaker	11
8. Tweeter	12
9. Rear Speaker	13
10. Antenna	14
11. Antenna Amplifier	15
12. Noise Suppressor	16
13. Navigation Display	17
14. GPS Antenna	18
15. Navigation Body	19
16. AUX Input Terminal	20
17. Front Accessory Power Supply Socket	21
18. Rear Accessory Power Supply Socket	22
19. Steering Satellite Switch	23