

General Description

FUEL INJECTION (FUEL SYSTEMS)

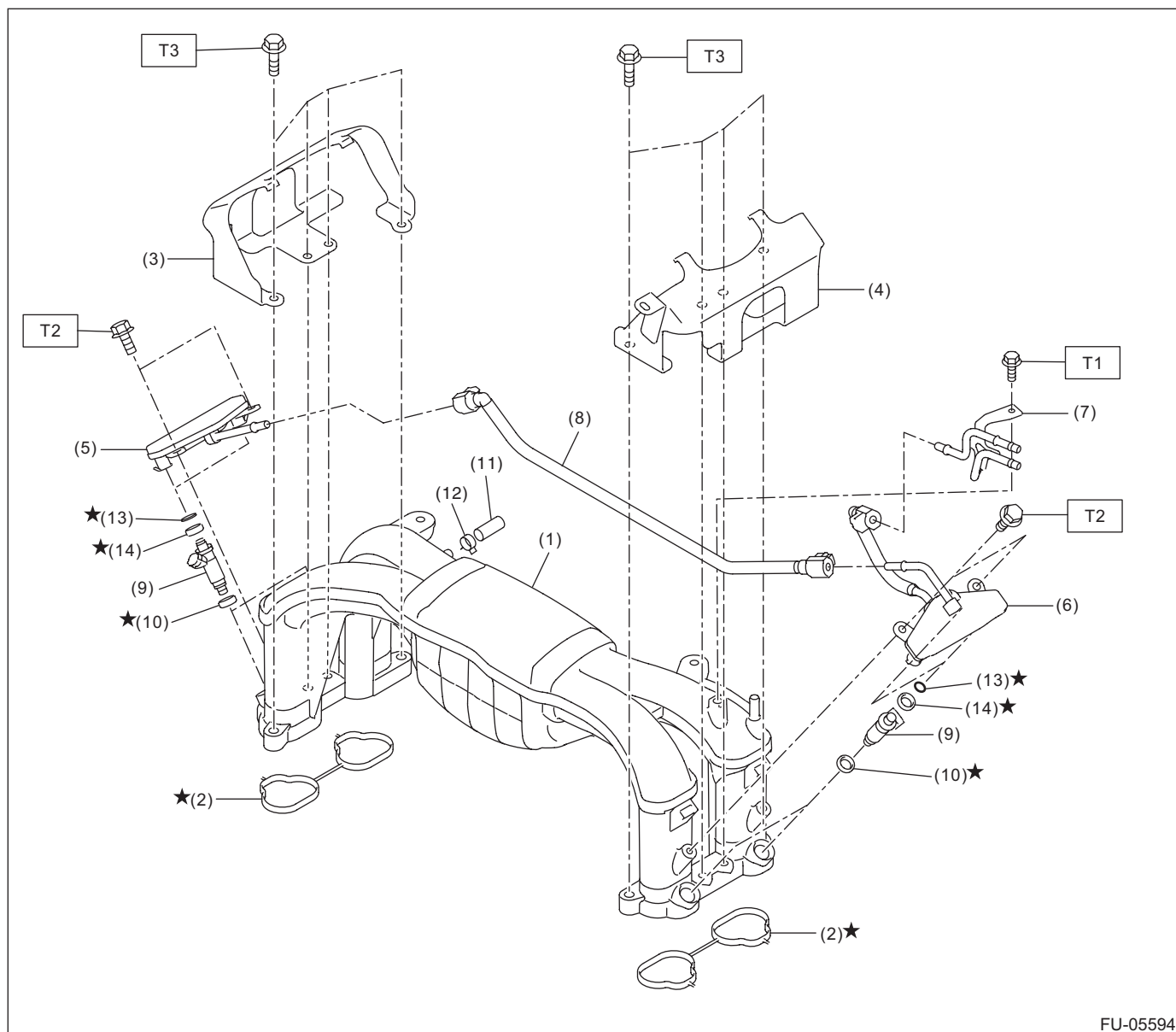
1. General Description

A: SPECIFICATION

Fuel tank	Capacity	70 ℓ (18.5 US gal, 15.4 Imp gal)
	Location	Under rear seat
Fuel pump	Type	Impeller
	Shutoff discharge pressure	677 kPa (6.9 kgf/cm ² , 98.2 psi) or less
	Discharge rate	105 ℓ (27.7 US gal, 23.1 Imp gal) [12 V at 300 kPa (3.06 kgf/cm ² , 43.5 psi)]
Fuel filter		In-tank type

B: COMPONENT

1. INTAKE MANIFOLD



General Description

FUEL INJECTION (FUEL SYSTEMS)

- | | | |
|----------------------------------|------------------------|-------------|
| (1) Intake manifold | (8) Fuel delivery pipe | (14) Rubber |
| (2) Gasket | (9) Injector | |
| (3) Intake manifold protector RH | (10) Seal ring | |
| (4) Intake manifold protector LH | (11) Cap | |
| (5) Fuel gallery RH | (12) Clip | |
| (6) Fuel gallery LH | (13) O-ring | |
| (7) Fuel pipe | | |

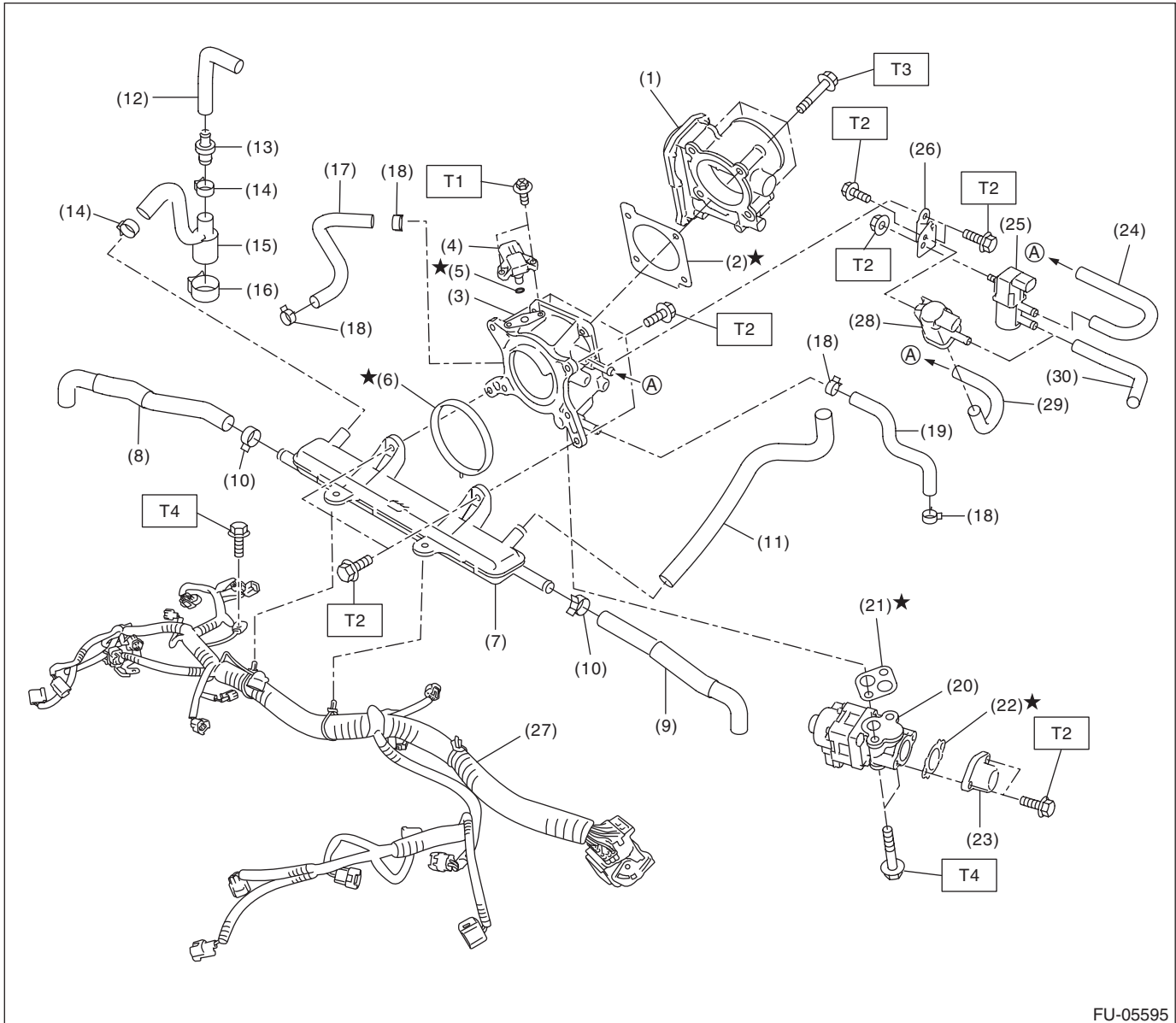
Tightening torque:N·m (kgf-m, ft-lb)

T1: 6.4 (0.7, 4.7)

T2: 19 (1.9, 14.0)

T3: 25 (2.5, 18.4)

2. AIR INTAKE SYSTEM



FU-05595

(1) Throttle body	(14) Clip	(26) Bracket
(2) Gasket	(15) PCV hose E	(27) Engine harness
(3) Multi-function duct	(16) Clip	(28) Purge control solenoid valve (U5 model)
(4) Manifold absolute pressure sensor	(17) Heater hose A	(29) Evaporation hose B
(5) O-ring	(18) Clip	(30) Evaporation hose C
(6) Gasket	(19) Heater hose B	
(7) PCV pipe	(20) EGR valve	
(8) PCV hose A	(21) Gasket	
(9) PCV hose B	(22) Gasket	
(10) Clip	(23) EGR pipe adapter	
(11) PCV hose C	(24) Evaporation hose A	
(12) PCV hose D	(25) Purge control solenoid valve (Other than U5 model)	
(13) PCV valve		

Tightening torque: N·m (kgf-m, ft-lb)

T1: 2 (0.2, 1.5)

T2: 6.4 (0.7, 4.7)

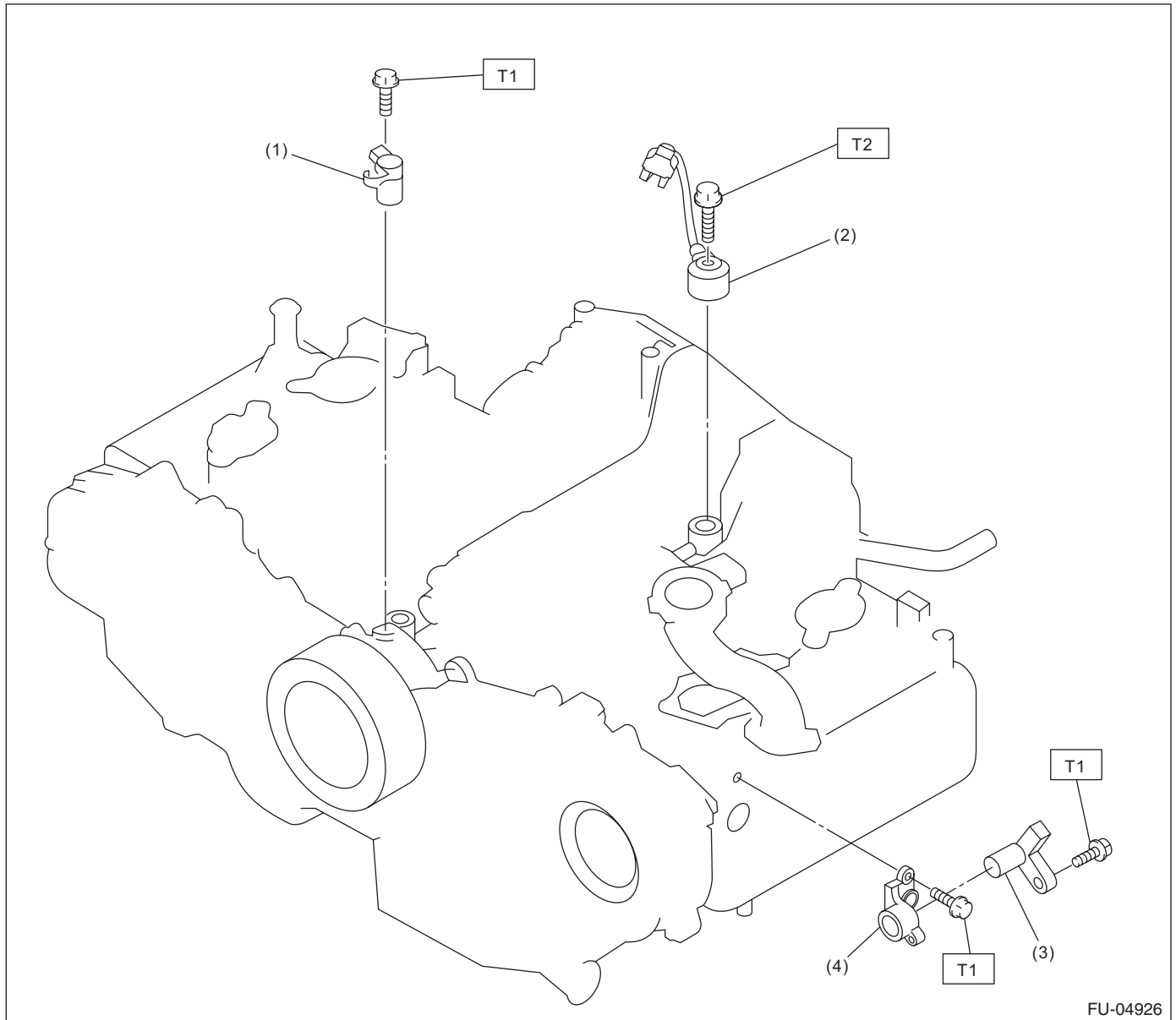
T3: 8 (0.8, 5.9)

T4: 19 (1.9, 14.0)

General Description

FUEL INJECTION (FUEL SYSTEMS)

3. CRANKSHAFT POSITION, CAMSHAFT POSITION AND KNOCK SENSORS



FU-04926

(1) Crankshaft position sensor

(2) Knock sensor

(3) Camshaft position sensor

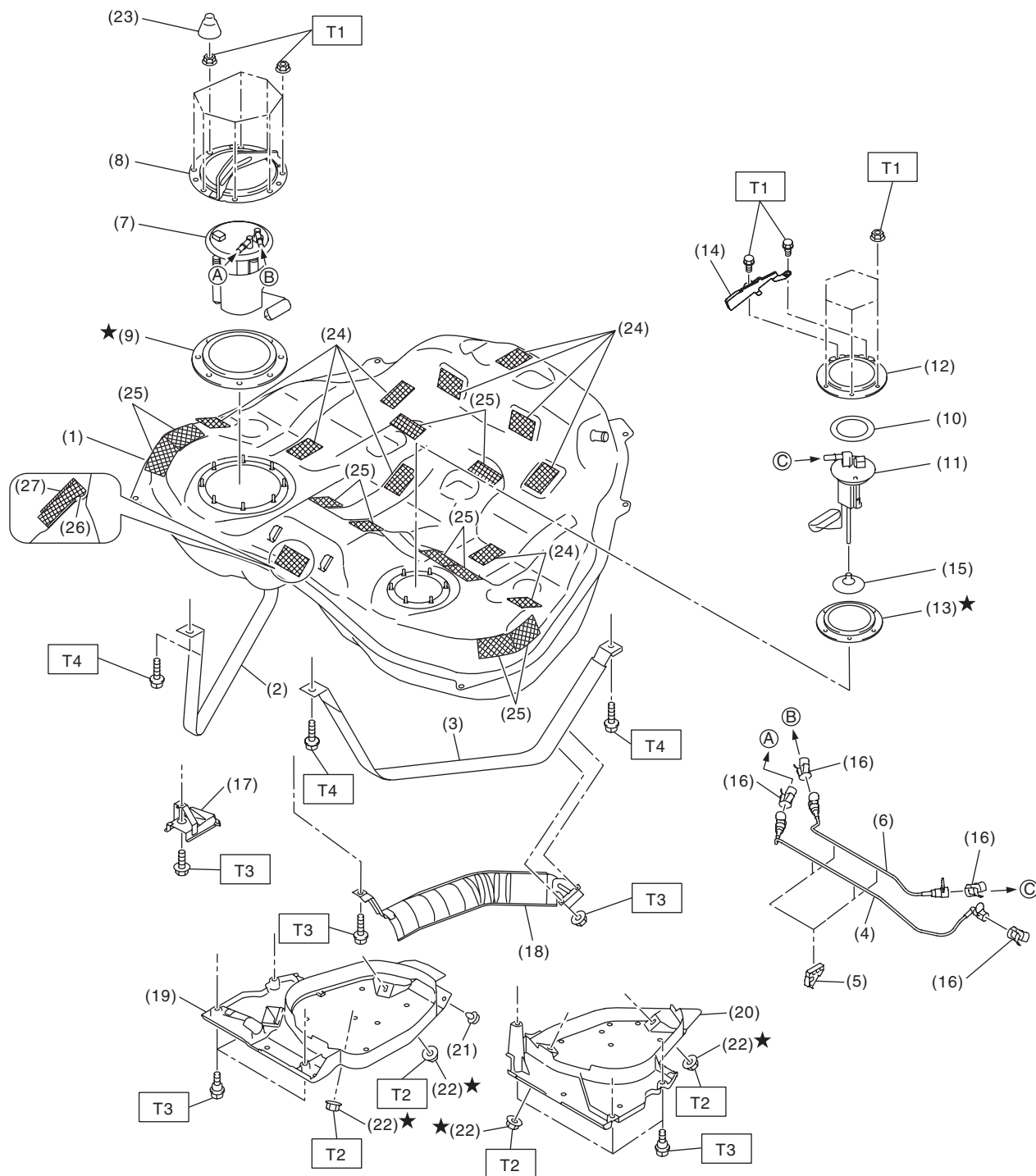
(4) Camshaft position sensor support

Tightening torque: N·m (kgf-m, ft-lb)

T1: 6.4 (0.7, 4.7)

T2: 24 (2.4, 17.7)

4. FUEL TANK



FU-05596

General Description

FUEL INJECTION (FUEL SYSTEMS)

(1) Fuel tank	(12) Fuel sub level sensor upper plate	(23) Rubber cap
(2) Fuel tank band RH	(13) Fuel sub level sensor gasket	(24) Cushion
(3) Fuel tank band LH	(14) Fuel sub level sensor protector	(25) Cushion
(4) Fuel delivery tube	(15) Fuel sub level sensor filter	(26) Cushion
(5) Tube clamp	(16) Retainer	(27) Cushion
(6) Fuel sub delivery tube	(17) Stopper	
(7) Fuel pump ASSY	(18) Heat shield cover	
(8) Fuel pump upper plate	(19) Fuel tank protector RH	
(9) Fuel pump gasket	(20) Fuel tank protector LH	
(10) Fuel sub level sensor upper plate cushion	(21) Clip	
(11) Fuel sub level sensor	(22) Self-locking nut	

Tightening torque:N·m (kgf-m, ft-lb)

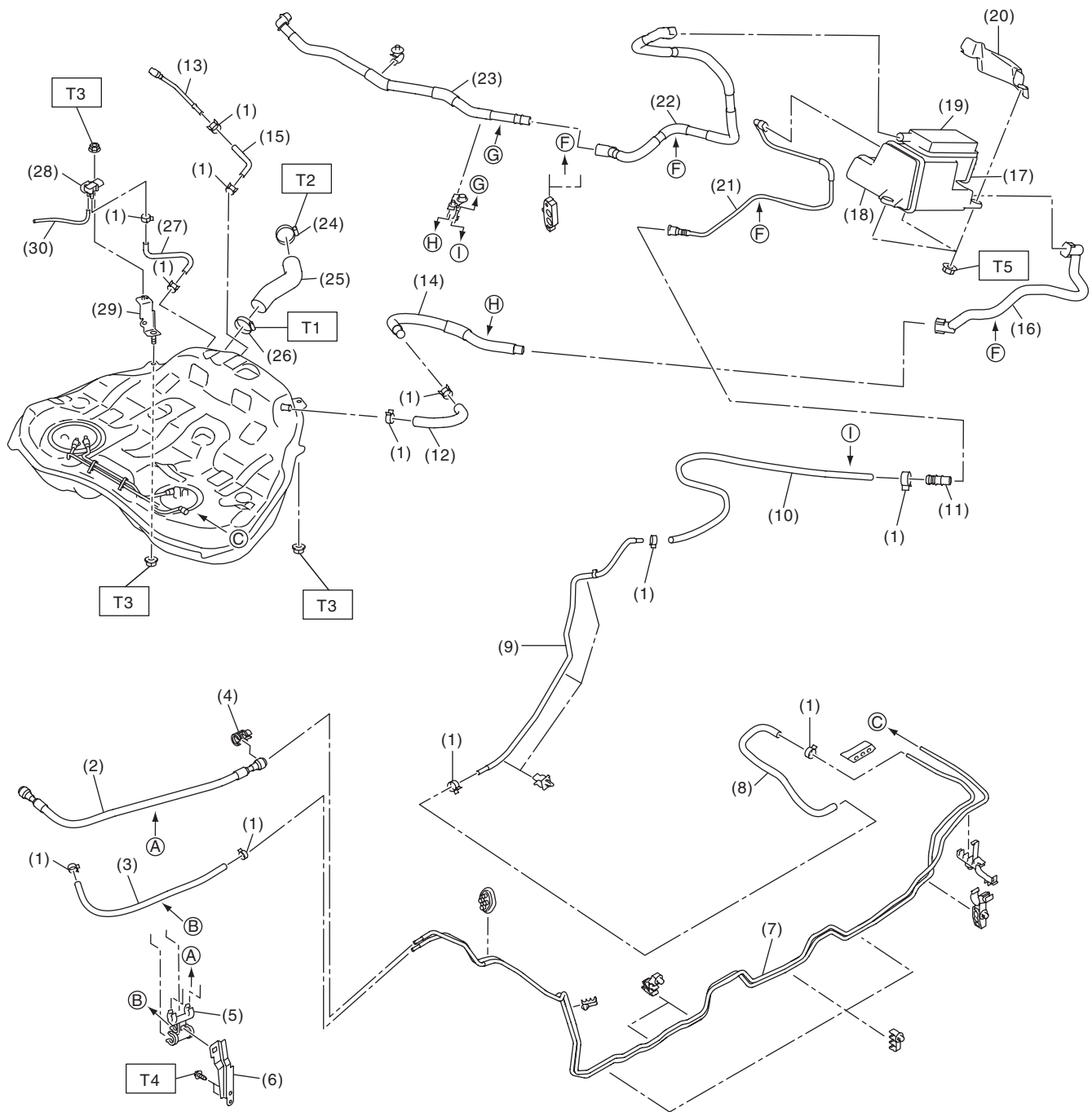
T1: 4.4 (0.4, 3.2)

T2: 9 (0.9, 6.6)

T3: 18 (1.8, 13.3)

T4: 33 (3.4, 24.3)

5. FUEL LINE



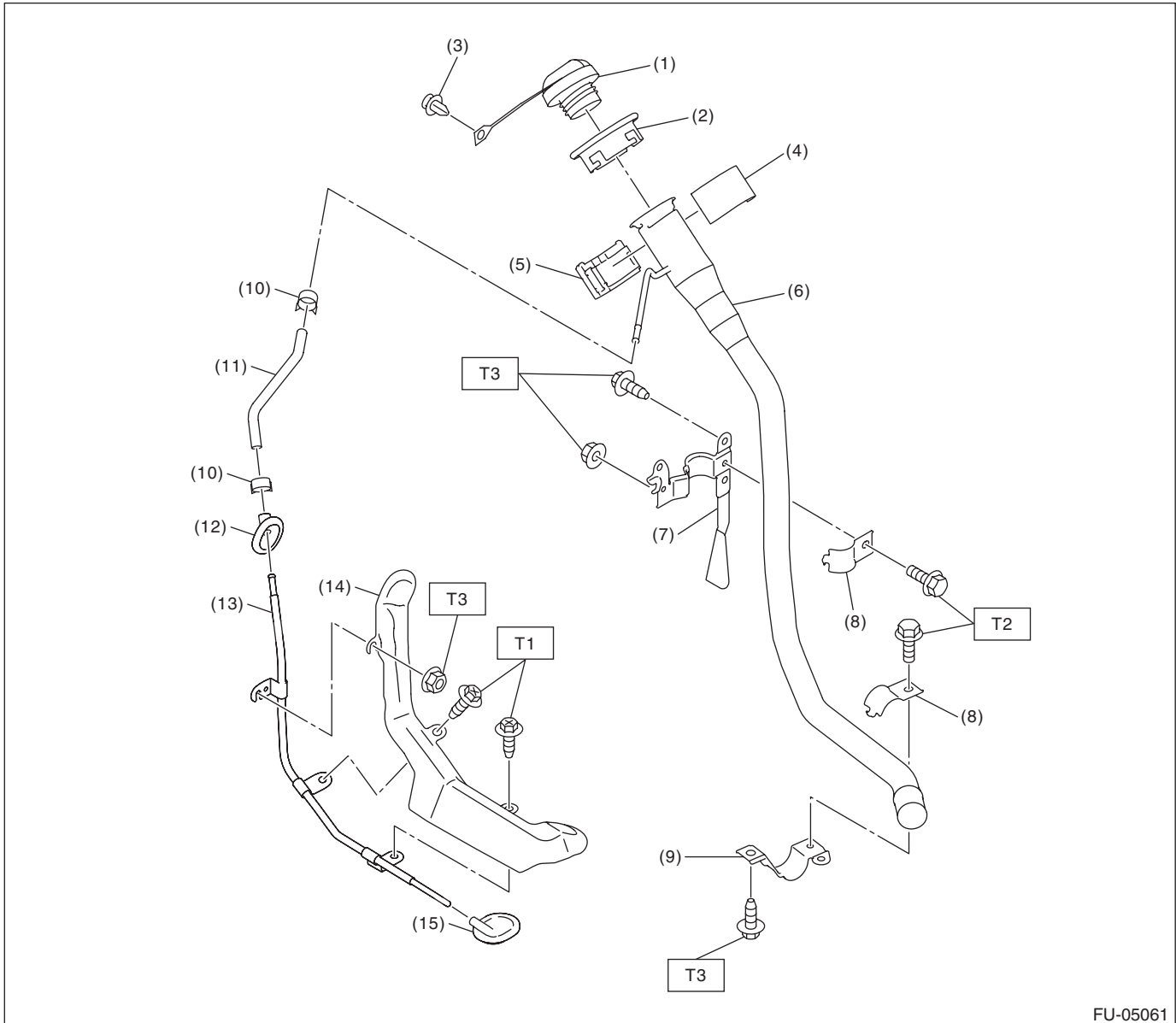
FU-05597

General Description

FUEL INJECTION (FUEL SYSTEMS)

(1) Clip	(14) Air vent tube	(26) Clamp
(2) Fuel delivery hose	(15) Circulate hose	(27) Pressure hose
(3) Evaporation hose	(16) Vent tube	(28) Fuel tank pressure sensor
(4) Connect check cover	(17) Drain valve	(29) Fuel tank pressure sensor bracket
(5) Fuel damper holder	(18) Canister	(30) Vacuum hose
(6) Damper bracket	(19) Drain filter	
(7) Fuel pipe ASSY	(20) Canister protector	<i>Tightening torque:N·m (kgf-m, ft-lb)</i>
(8) Purge hose A	(21) Charge tube	<i>T1: 2 (0.2, 1.5)</i>
(9) Purge pipe	(22) Canister drain tube	<i>T2: 2.5 (0.3, 1.8)</i>
(10) Purge hose B	(23) Drain tube ASSY	<i>T3: 7.35 (0.7, 5.4)</i>
(11) Connector	(24) Clamp	<i>T4: 7.5 (0.8, 5.5)</i>
(12) Air vent hose A	(25) Fuel filler hose	<i>T5: 8 (0.8, 5.9)</i>
(13) Circulate tube		

6. FUEL FILLER PIPE



FU-05061

- | | | |
|--------------------------------|---------------------------------|--------------|
| (1) Fuel filler cap | (8) Fuel filler pipe bracket B | (15) Grommet |
| (2) Fuel filler pipe protector | (9) Fuel filler pipe bracket C | |
| (3) Clip | (10) Clip | |
| (4) Neck holder A | (11) Evaporation hose | |
| (5) Neck holder B | (12) Grommet | |
| (6) Fuel filler pipe | (13) Evaporation pipe | |
| (7) Fuel filler pipe bracket A | (14) Evaporation pipe protector | |

Tightening torque: N·m (kgf-m, ft-lb)

T1: 1 (0.1, 0.7)

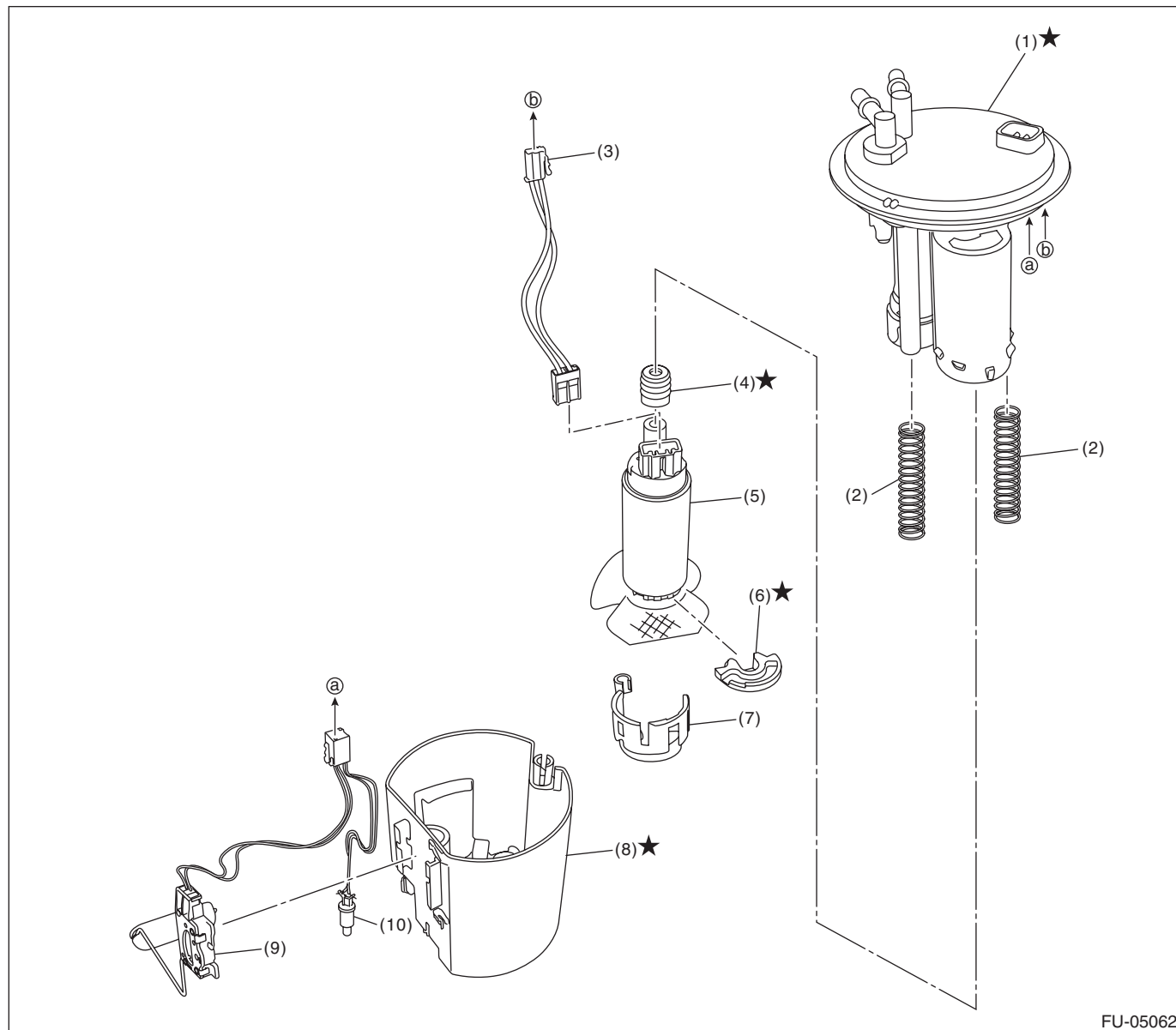
T2: 7.35 (0.7, 5.4)

T3: 7.5 (0.8, 5.5)

General Description

FUEL INJECTION (FUEL SYSTEMS)

7. FUEL PUMP



FU-05062

- | | | |
|--------------------------|----------------------------|------------------------------|
| (1) Fuel filter assembly | (5) Fuel pump | (9) Fuel level sensor |
| (2) Pump module spring | (6) Support rubber cushion | (10) Fuel temperature sensor |
| (3) Fuel pump harness | (7) Fuel pump holder | |
| (4) Gasket spacer | (8) Fuel chamber ASSY | |

C: CAUTION

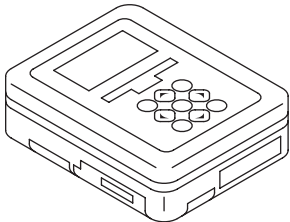
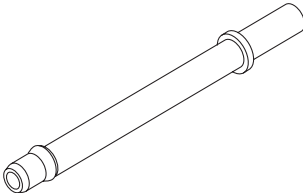
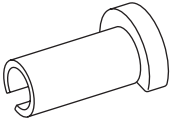
- Wear appropriate work clothing, including a cap, protective goggles and protective shoes when performing any work.
- Remove contamination including dirt and corrosion before removal, installation or disassembly.
- Keep the disassembled parts in order and protect them from dust and dirt.
- Before removal, installation or disassembly, be sure to clarify the failure. Avoid unnecessary removal, installation, disassembly and replacement.
- Vehicle components are extremely hot after driving. Be wary of receiving burns from heated parts.
- Be sure to tighten fasteners including bolts and nuts to the specified torque.
- Place shop jacks or rigid racks at the specified points.
- Before disconnecting connectors of sensors or units, be sure to disconnect the ground cable from battery.
- Place “NO OPEN FLAMES” signs near the working area.
- Prepare a container and cloth to prevent scattering of fuels when performing work where fuels can be spilled. If the oil spills, wipe it off immediately to prevent from penetrating into floor or flowing out for environmental protection.
- Follow all government and local regulations concerning disposal of refuse when disposing fuel.

General Description

FUEL INJECTION (FUEL SYSTEMS)

D: PREPARATION TOOL

1. SPECIAL TOOL

ILLUSTRATION	TOOL NUMBER	DESCRIPTION	REMARKS
 ST1B022XU0	1B022XU0	SUBARU SELECT MONITOR III KIT	Used for draining fuel and each inspection.
 ST18471AA000	18471AA000	FUEL PIPE ADAPTER	Used for draining fuel.
 ST42099AE000	42099AE000	QUICK CONNECTOR RELEASE	Used for removing the quick connector.

2. GENERAL TOOL

TOOL NAME	REMARKS
Circuit tester	Used for measuring resistance and voltage.
Oscilloscope	Used for inspecting the waveform of each sensor.