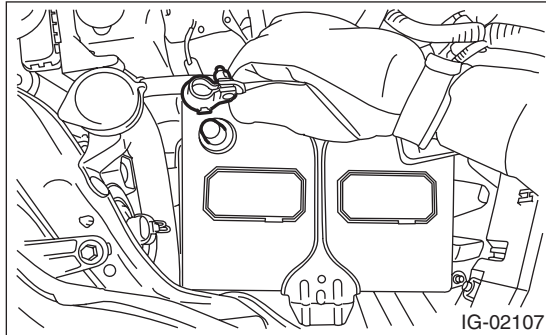


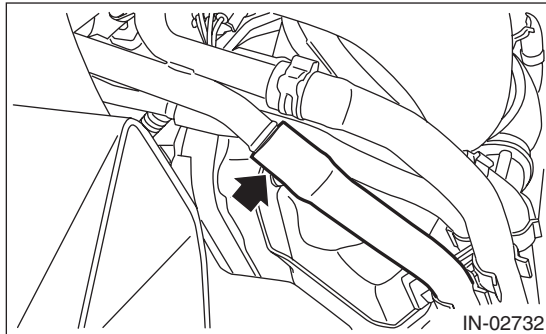
6. Intake Duct

A: REMOVAL

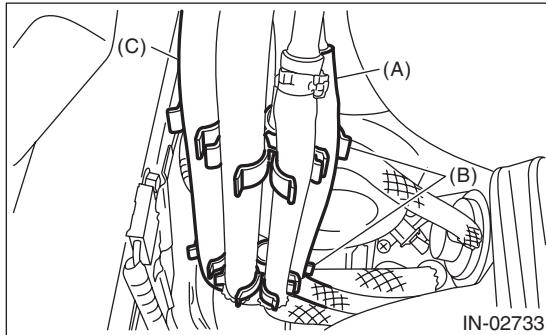
- 1) Remove the collector cover.
- 2) Disconnect the ground cable from battery.



- 3) Disconnect the vacuum hose from PCV pipe.

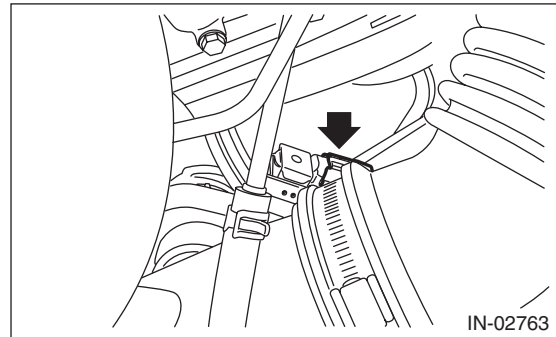


- 4) Disconnect the vacuum hose (A) from blow-by pipe and remove the vacuum hose (A) and vacuum hose (C).



- 5) Lift up the vehicle.
- 6) Remove the under cover. <Ref. to EI-35, REMOVAL, Front Under Cover.>

- 7) Disconnect the connector from the wastegate control solenoid valve.

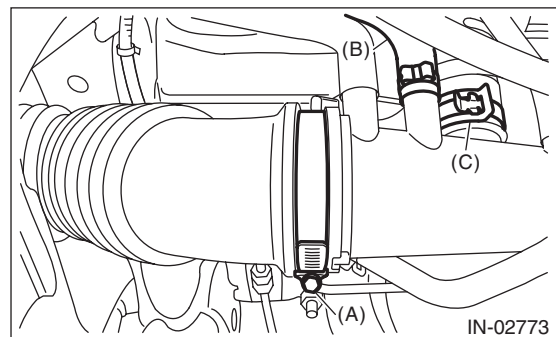
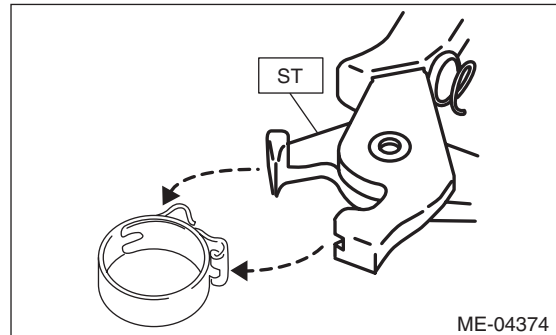


- 8) Loosen the clamp (A) securing the air intake boot to the intake duct, and remove the air intake boot from intake duct.
- 9) Disconnect the vacuum hose (B) from intake duct, and unlock the clip (C) securing the air bypass valve to the intake duct.

NOTE:

Pinch the clamp of the vacuum hose (B) by fitting the cut out in the ST with the protrusion on the clamp as shown in the figure, and unlock the clamp.

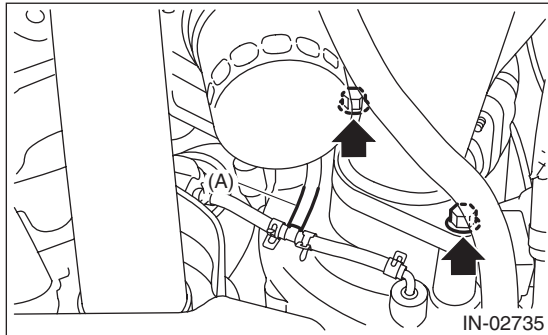
ST 18353AA000 CLAMP PLIERS



Intake Duct

INTAKE (INDUCTION)

- 10) Disconnect the air control hose (A).
- 11) Remove the bolts which secure the intake duct to the turbocharger, and remove the intake duct.



B: INSTALLATION

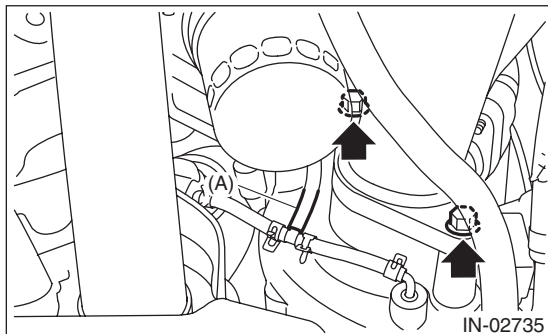
- 1) Install the bolts which secure the intake duct to the turbocharger, and connect the air control hose (A).

NOTE:

- Use new O-rings.
- Be careful not to pinch the O-ring.

Tightening torque:

6.4 N·m (0.7 kgf-m, 4.7 ft-lb)

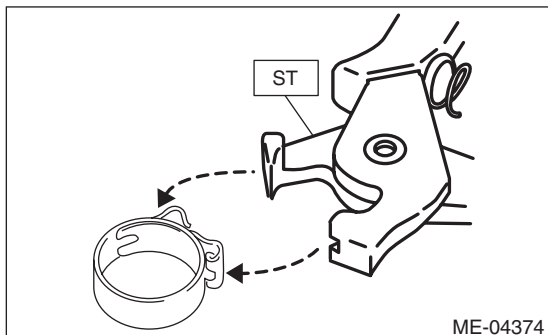


- 2) Install the air by-pass valve and air intake boot to the intake duct, and connect the vacuum hose to the intake duct.

NOTE:

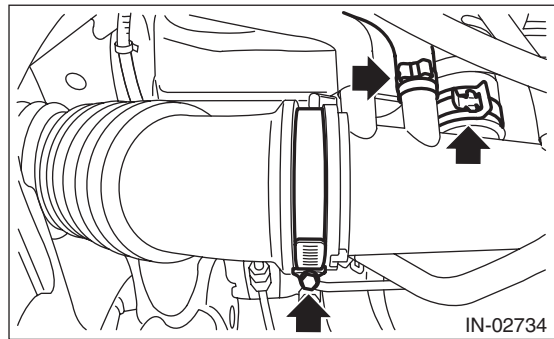
Use a new clamp for the vacuum hose, fit the cut out in the ST with the protrusion on the clamp as shown in the figure, and lock the clamp.

ST 18353AA000 CLAMP PLIERS

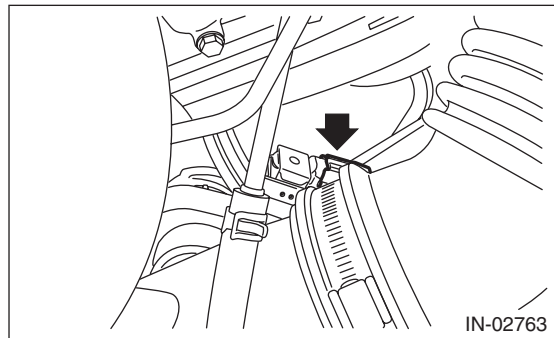


Tightening torque:

2.5 N·m (0.3 kgf-m, 1.8 ft-lb)



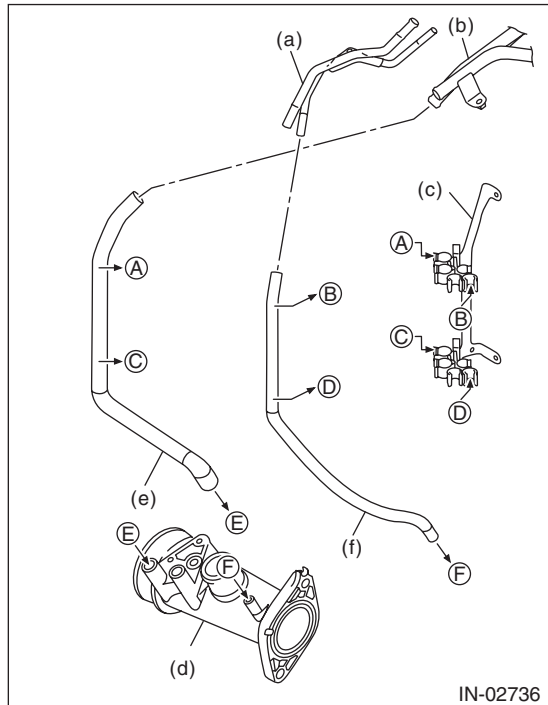
- 3) Connect the connector to the wastegate control solenoid valve.



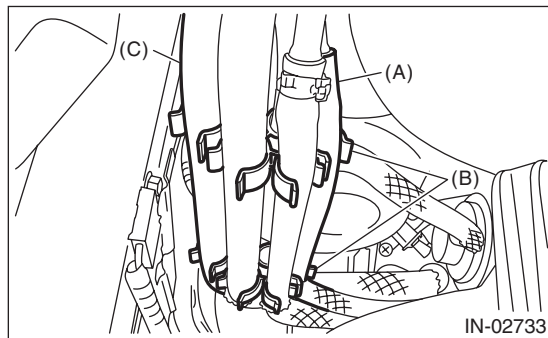
- 4) Install the under cover. <Ref. to EI-35, INSTALLATION, Front Under Cover.>
- 5) Lower the vehicle.
- 6) Install the vacuum hose (A) and vacuum hose (C) to the clip (B), and connect the vacuum hose (A) to the blow-by pipe.

NOTE:

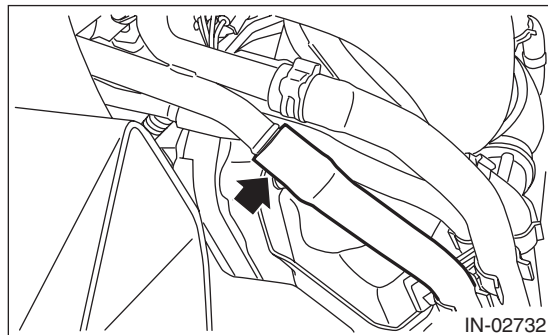
Install the vacuum hose as shown in the figure.



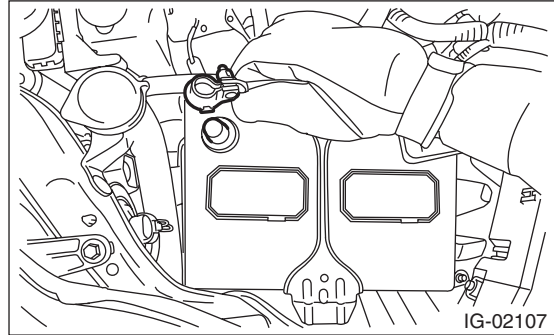
- (a) Blow-by pipe
- (b) PCV pipe
- (c) Hose clip stay ASSY
- (d) Intake duct
- (e) Vacuum hose (C)
- (f) Vacuum hose (A)



7) Connect the vacuum hose to PCV pipe.



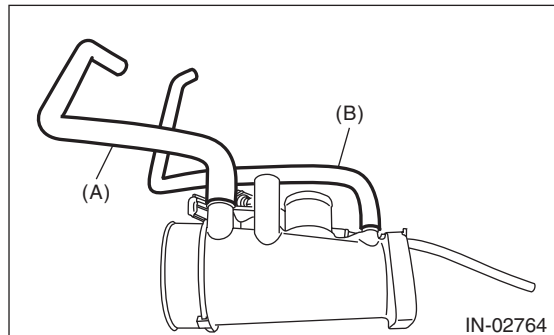
8) Connect the ground cable to battery.



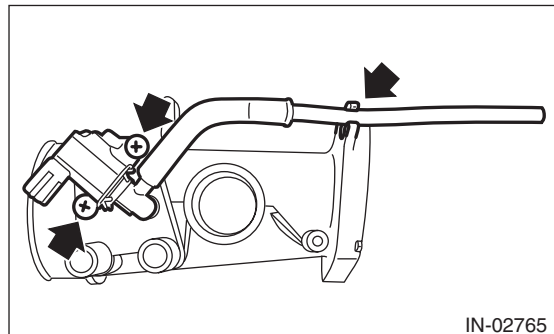
9) Install the collector cover.

C: DISASSEMBLY

1) Remove the vacuum hose (A) and vacuum hose (B) from intake duct.



2) Remove the wastegate control solenoid valve and air control hose from the intake duct.



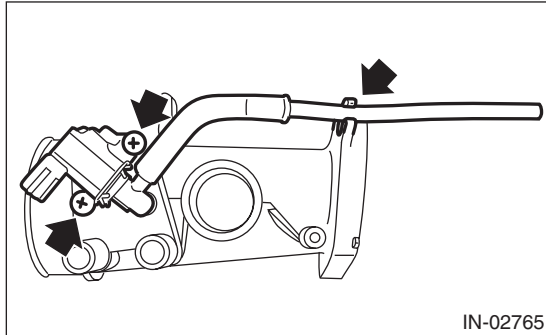
D: ASSEMBLY

1) Install the wastegate control solenoid valve and air control hose to the intake duct.

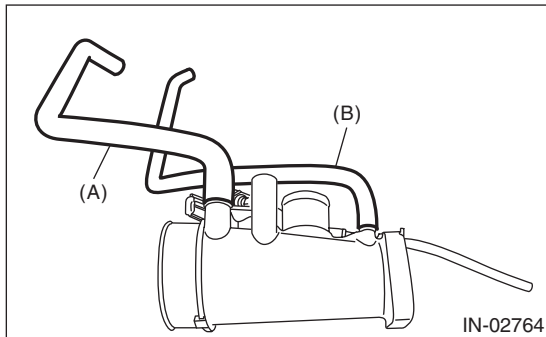
- Use new O-rings.
- When tightening the boost control solenoid valve, check that it is securely seated.

Tightening torque:

4 N·m (0.4 kgf-m, 3.0 ft-lb)



2) Install the vacuum hose (A) and vacuum hose (B) from intake duct.



E: INSPECTION

1) Check that the intake duct, PCV pipe and blow-by pipe have no deformation, cracks or other damages.

2) Check that the vacuum hose and air control hose have no cracks, damage or loose part.