

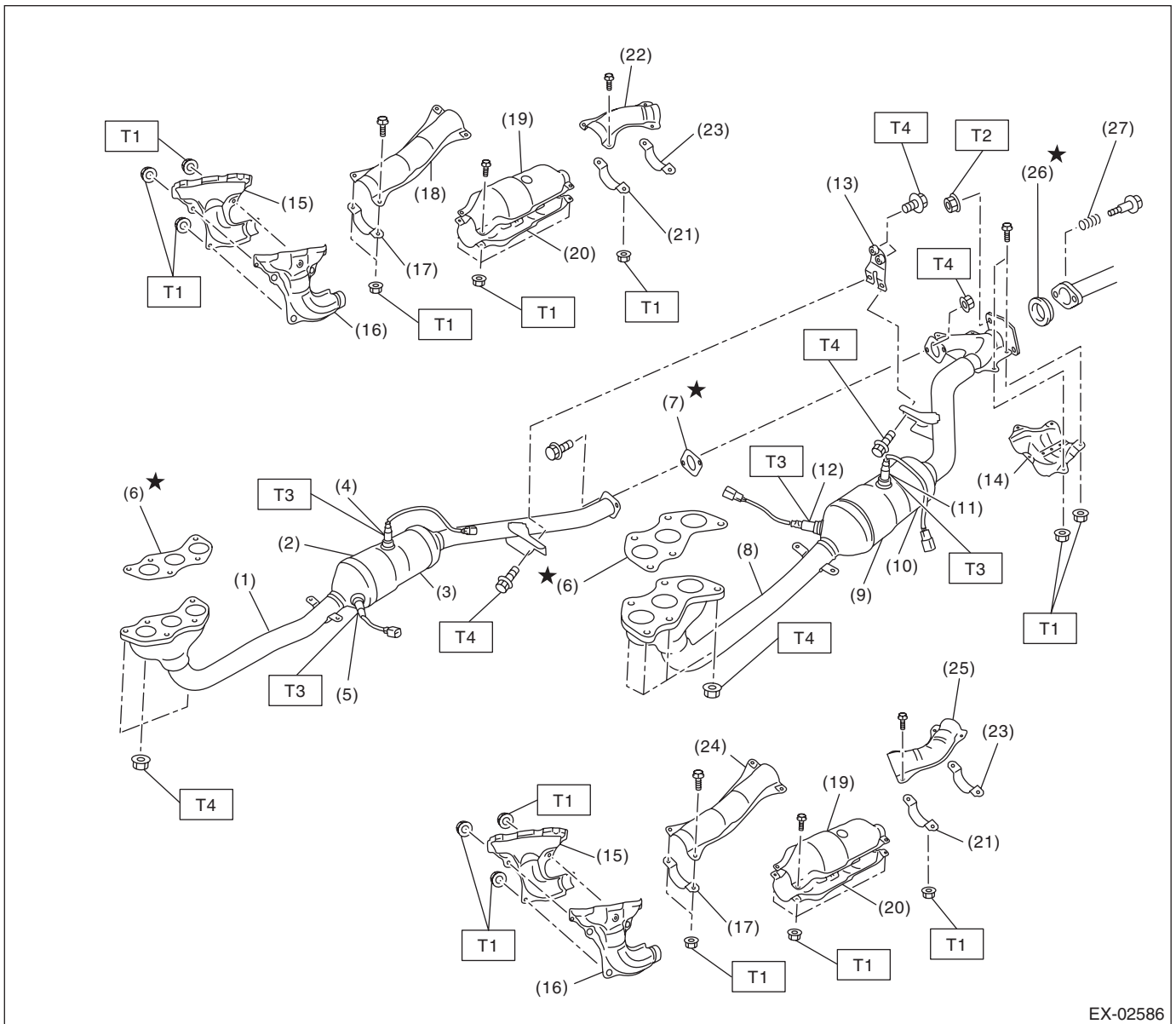
# General Description

## EXHAUST

### 1. General Description

#### A: COMPONENT

##### 1. FRONT EXHAUST PIPE



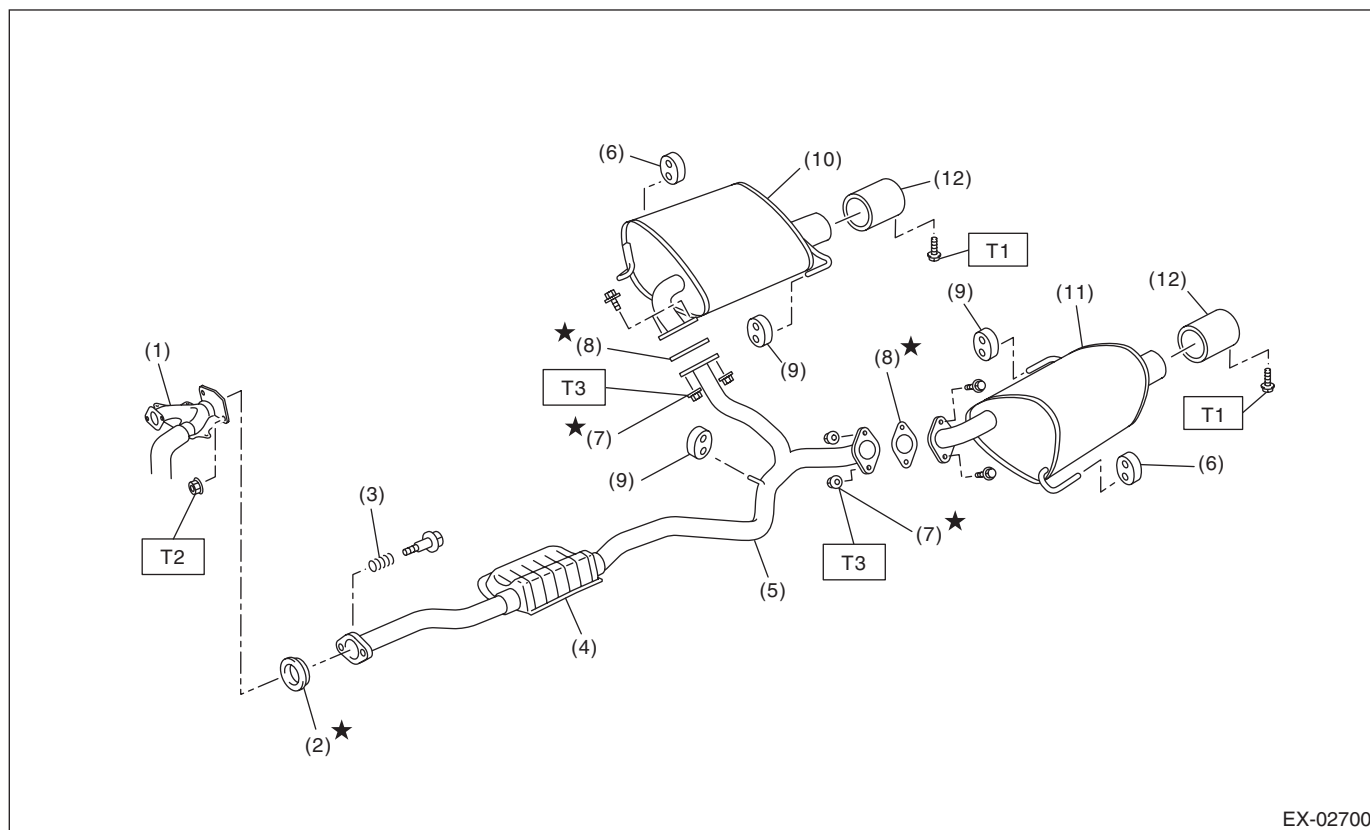
EX-02586

# General Description

EXHAUST

(1) Front exhaust pipe (RH)	(12) Front oxygen sensor (LH)	(23) Clamp
(2) Front catalytic converter (RH)	(13) Bracket	(24) Front exhaust pipe upper cover (LH) (front)
(3) Rear catalytic converter (RH)	(14) Protector	(25) Front exhaust pipe upper cover (LH) (rear)
(4) Rear oxygen sensor (RH)	(15) Front exhaust pipe cover (RH)	(26) Gasket
(5) Front oxygen sensor (RH)	(16) Front exhaust pipe cover (LH)	(27) Spring
(6) Gasket	(17) Clamp	
(7) Gasket	(18) Front exhaust pipe upper cover (RH) (front)	
(8) Front exhaust pipe (LH)	(19) Catalytic converter upper cover	<b>Tightening torque:N·m (kgf-m, ft-lb)</b>
(9) Front catalytic converter (LH)	(20) Catalytic converter lower cover (U5 model)	<b>T1: 13 (1.3, 9.6)</b>
(10) Rear catalytic converter (LH)	(21) Clamp (except for U5 model)	<b>T2: 18 (1.8, 13.3)</b>
(11) Rear oxygen sensor (LH)	(22) Front exhaust pipe upper cover (RH) (rear)	<b>T3: 21 (2.1, 15.5)</b>
		<b>T4: 30 (3.1, 22.1)</b>

## 2. REAR EXHAUST PIPE AND MUFFLER



EX-02700

(1) Front exhaust pipe (LH)	(7) Self-locking nut	<b>Tightening torque:N·m (kgf-m, ft-lb)</b>
(2) Gasket	(8) Gasket	<b>T1: 7.5 (0.8, 5.5)</b>
(3) Spring	(9) Cushion rubber (without protrusion)	<b>T2: 18 (1.8, 13.3)</b>
(4) Chamber	(10) Muffler (RH)	<b>T3: 48 (4.9, 35.4)</b>
(5) Rear exhaust pipe	(11) Muffler (LH)	
(6) Cushion rubber (with protrusion)	(12) Muffler cutter	

#### **B: CAUTION**

- Wear appropriate work clothing, including a cap, protective goggles and protective shoes when performing any work.
- Remove contamination including dirt and corrosion before removal, installation or disassembly.
- Keep the disassembled parts in order and protect them from dust and dirt.
- Before removal, installation or disassembly, be sure to clarify the failure. Avoid unnecessary removal, installation, disassembly and replacement.
- Vehicle components are extremely hot after driving. Be wary of receiving burns from heated parts.
- Be sure to tighten fasteners including bolts and nuts to the specified torque.
- Place shop jacks or rigid racks at the specified points.
- Before disconnecting connectors of sensors or units, be sure to disconnect the ground cable from the battery.
- If any fat adheres to the exhaust pipe, wipe it off. Otherwise a fire may happen.