

General Description

LUBRICATION

1. General Description

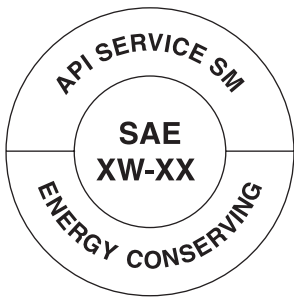

A: SPECIFICATION

Lubrication method				Forced lubrication
Oil pump	Pump type			Trochoid type
	Number of teeth	Inner rotor		7
		Outer rotor		8
	Outer rotor diameter × thickness			mm (in)
	Performance (Oil temperature 80°C (176°F))	600 rpm	Discharge pressure	kPa (kgf/cm ² , psi)
			Discharge rate	ℓ (US qt, Imp qt)/min.
		6,000 rpm	Discharge pressure	kPa (kgf/cm ² , psi)
			Discharge rate	ℓ (US qt, Imp qt)/min.
Oil filter	Filter type			Full-flow filter type
	Filtration area			cm ² (sq in)
	By-pass valve opening pressure			kPa (kgf/cm ² , psi)
	Outer diameter × width			mm (in)
	Installation screw specifications			M 20 × 1.5
Oil pressure switch	Type			Immersed contact point type
	Operating voltage — power consumption			12 V — 3.4 W or less
	Warning light operating pressure			kPa (kgf/cm ² , psi)
	Proof pressure			kPa (kgf/cm ² , psi)
Engine oil	Total capacity (at overhaul)			ℓ (US qt, Imp qt)
	When replacing engine oil and oil filter			ℓ (US qt, Imp qt)
	When replacing engine oil only			ℓ (US qt, Imp qt)

Recommended oil:

CAUTION:

It is acceptable to fill an engine with oil of another brand when replacing the oil, but make sure to use following oil specified by Subaru.

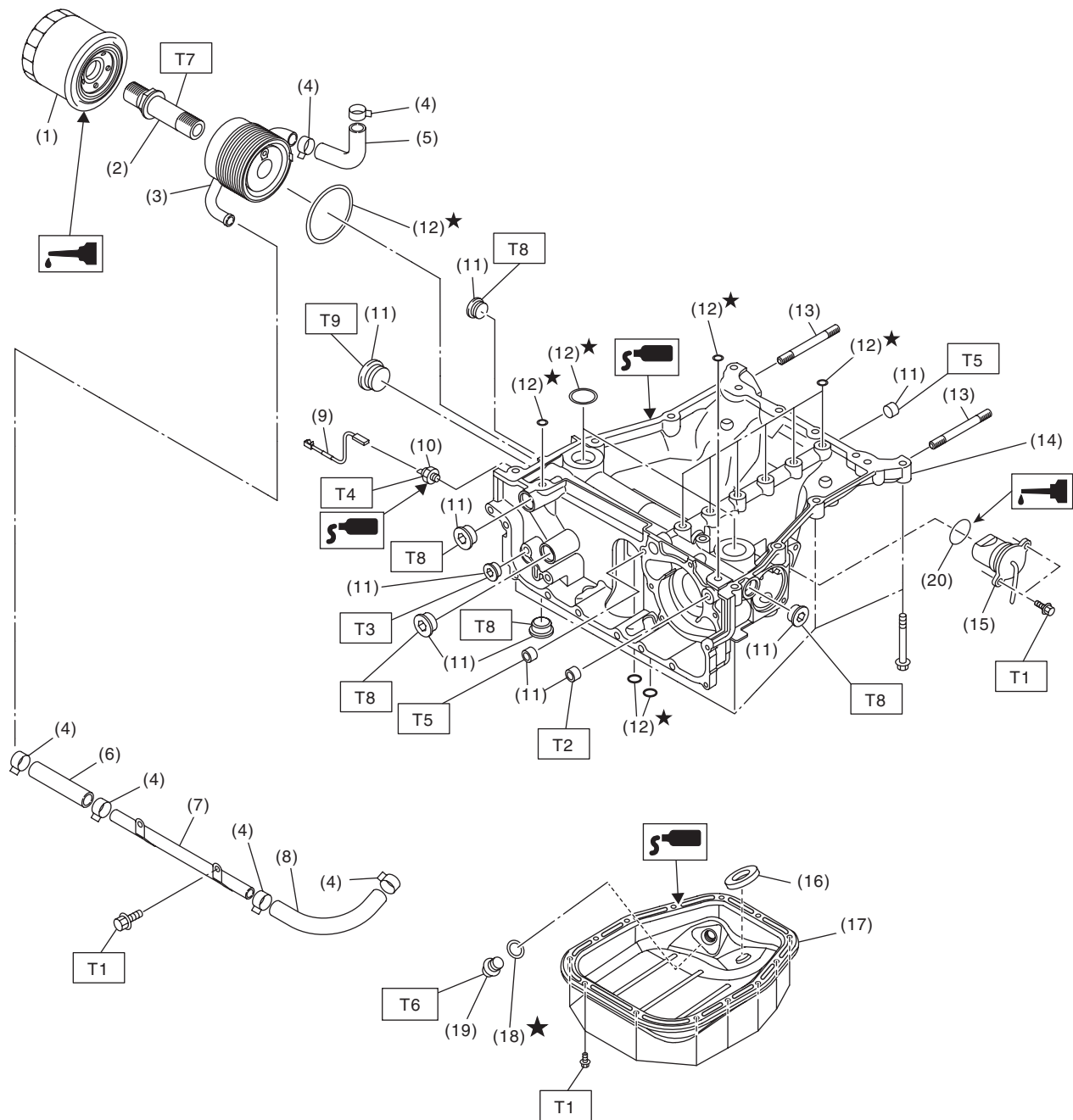
Engine oil standard		SAE viscosity No.
<div><p>RM-00076</p><p>For API standard, oil with SM “Energy Conserving” or SN “Resource Conserving” logo.</p></div> <div>or</div> <div><p>RM-00002</p><p>Those with the ILSAC standard GF-4 or GF-5 “starburst mark” displayed on top of the container.</p></div>		5W-30 (synthetic oil)

NOTE:

The proper viscosity oil helps the engine maintain its ideal temperature, and cranking speed increased by reducing viscosity friction in hot condition.

B: COMPONENT

1. OIL PAN UPPER, OIL COOLER, AND OIL FILTER



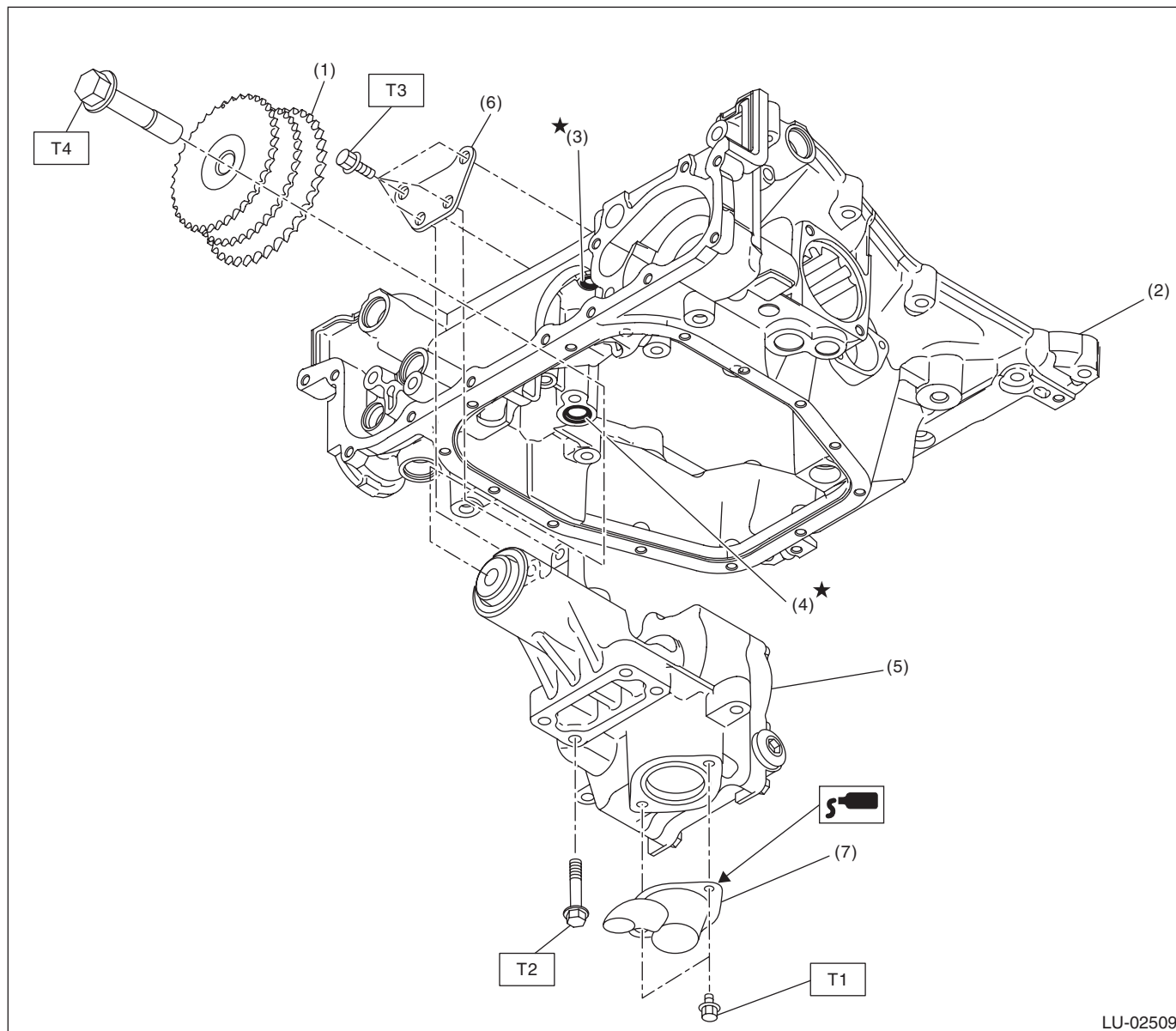
LU-02672

General Description

LUBRICATION

(1) Oil filter	(11) Plug	<i>Tightening torque:N·m (kgf-m, ft-lb)</i>
(2) Oil cooler connector	(12) O-ring	<i>T1: 6.4 (0.7, 4.7)</i>
(3) Oil cooler	(13) Stud bolt	<i>T2: 17 (1.7, 12.5)</i>
(4) Clamp	(14) Oil pan upper	<i>T3: 23 (2.3, 17.0)</i>
(5) Water hose	(15) Oil level switch	<i>T4: 25 (2.5, 18.4)</i>
(6) Water hose	(16) Oil pan magnet	<i>T5: 34 (3.5, 25.1)</i>
(7) Engine oil cooler water pipe	(17) Oil pan lower	<i>T6: 44 (4.5, 32.5)</i>
(8) Water hose	(18) Gasket	<i>T7: 54 (5.5, 39.8)</i>
(9) Oil pressure switch harness	(19) Drain plug	<i>T8: 60 (6.1, 44.3)</i>
(10) Oil pressure switch	(20) O-ring	<i>T9: 90 (9.2, 66.4)</i>

2. OIL PUMP



LU-02509

- (1) Idler sprocket
- (2) Oil pan upper
- (3) O-ring
- (4) O-ring

- (5) Oil pump
- (6) Stiffener
- (7) Strainer

Tightening torque: N·m (kgf-m, ft-lb)

T1: 6.4 (0.7, 4.7)

T2: 13 (1.3, 9.6)

T3: 24 (2.4, 17.7)

T4: 120 (12.2, 88.5)

General Description

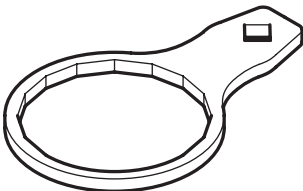
LUBRICATION

C: CAUTION

- Wear appropriate work clothing, including a cap, protective goggles and protective shoes when performing any work.
- Remove contamination including dirt and corrosion before removal, installation or disassembly.
- Keep the disassembled parts in order and protect them from dust and dirt.
- Before removal, installation or disassembly, be sure to clarify the failure. Avoid unnecessary removal, installation, disassembly and replacement.
- Before applying liquid gasket, completely remove the old liquid gasket and degrease it.
- Vehicle components are extremely hot after driving. Be wary of receiving burns from heated parts.
- Be sure to tighten fasteners including bolts and nuts to the specified torque.
- Place shop jacks or rigid racks at the specified points.
- Before disconnecting connectors of sensors or units, be sure to disconnect the ground cable from battery.
- If the engine oil is spilt over exhaust pipe or the under cover, wipe it off with cloth to avoid emitting smoke or causing a fire.
- Prepare a container and cloth to prevent scattering of oil when performing work where fuels can be spilled. If the oil spills, wipe it off immediately to prevent from penetrating into floor or flowing out for environmental protection.
- Follow all government and local regulations concerning disposal of refuse when disposing of oil.

D: PREPARATION TOOL

1. SPECIAL TOOL

ILLUSTRATION	TOOL NUMBER	DESCRIPTION	REMARKS
 ST18332AA020	18332AA020	OIL FILTER WRENCH	Used for removing and installing oil filter.

2. GENERAL TOOL

TOOL NAME	REMARKS
Circuit tester	Used for measuring resistance and voltage.