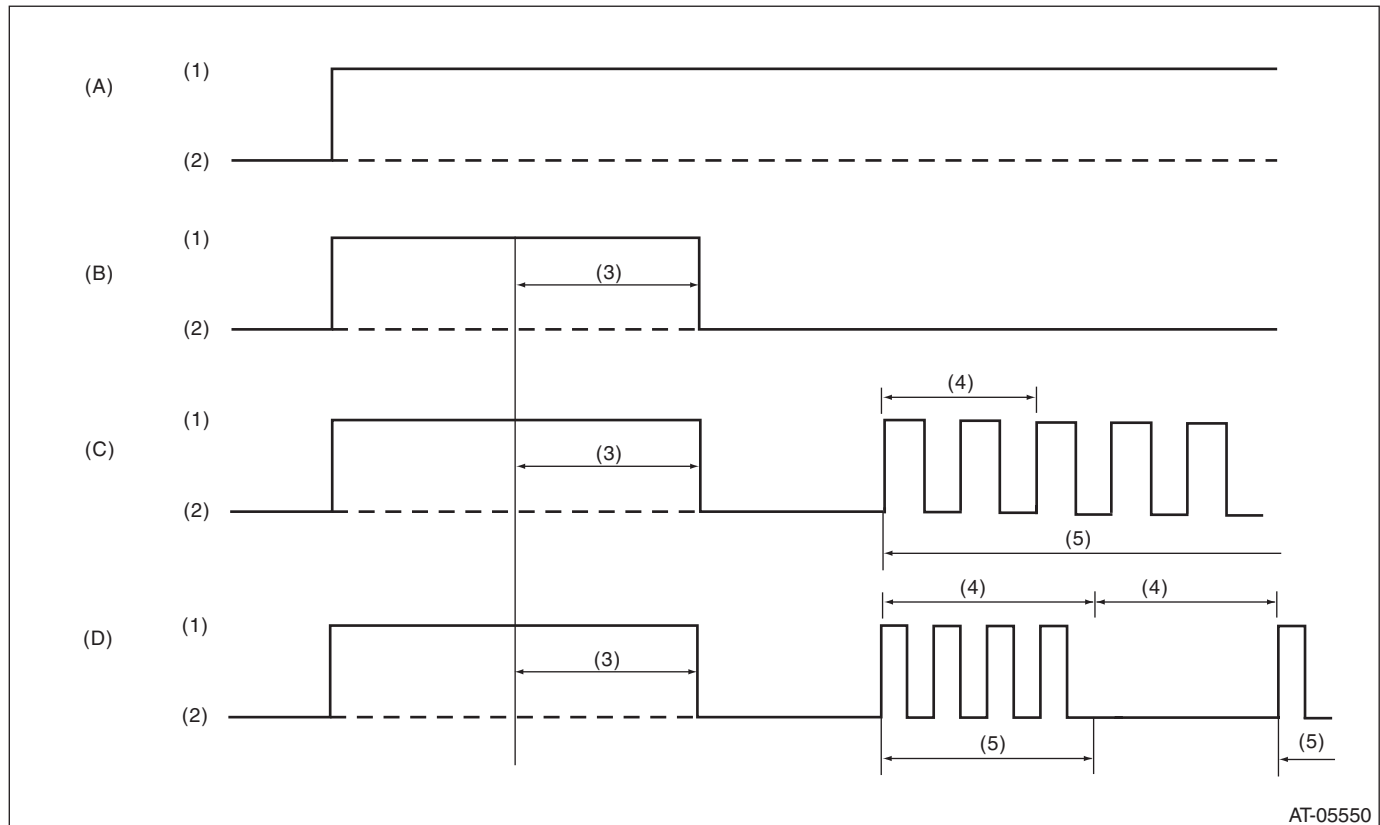


12.AT OIL TEMP Warning Light Display

A: OPERATION

When any on-board diagnostics item is malfunctioning, or the learning has not yet completed, AT OIL TEMP light blinks. Blinking continues from the engine start to the ignition switch OFF. The malfunctioning part or unit can be determined by a DTC. Problems which occurred previously can also be identified through the memory function. If the AT OIL TEMP light does not blink although a problem is occurring, the problem can be determined by checking the performance characteristics of each sensor using the Subaru Select Monitor. If the learning has not yet completed, "AT learning not completed" is displayed when the Subaru Select Monitor is connected while AT OIL TEMP light is blinking. The AT OIL TEMP light blinking will go off, when the learning is performed. Indicator light signal patterns are as shown in the figure.



(A) Ignition switch (engine OFF)

(B) Normal (engine ON)

(C) Faulty (engine ON)

(D) Learning not completed (engine ON)

(1) ON

(3) 2 sec.

(5) Blink

(2) OFF

(4) 1 sec.

When the AT OIL TEMP light does not operate normally, check the AT OIL TEMP light circuit. <Ref. to 5AT(diag)-26, INSPECTION, AT OIL TEMP Warning Light Display.>

AUTOMATIC TRANSMISSION (DIAGNOSTICS)

DIAGNOSIS:

- ### TROUBLE SYMPTOM:

- ### WIRING DIAGRAM:



5AT(diag)-26

AT OIL TEMP Warning Light Display

AUTOMATIC TRANSMISSION (DIAGNOSTICS)

| Step | | Check | Yes | No |
|------|---|---|---|--|
| 7 | CHECK TCM. Read the data of ATF temperature using Subaru Select Monitor. | Is the display 130°C or more? | Go to step 8. | Replace the TCM. <Ref. to 5AT-57, Transmission Control Module (TCM).> |
| 8 | CHECK ATF TEMPERATURE. Check the real fluid temperature from the transmission case surface temperature. | Is the temperature lower than "ATF temperature" displayed on Subaru Select Monitor? | Perform the diagnosis according to DTC P0713. | When ATF temperature can be judged as actually high, perform the diagnosis again after the ATF temperature lowers. |