

AWD Warning Light Display

AUTOMATIC TRANSMISSION (DIAGNOSTICS)

13.AWD Warning Light Display

A: OPERATION

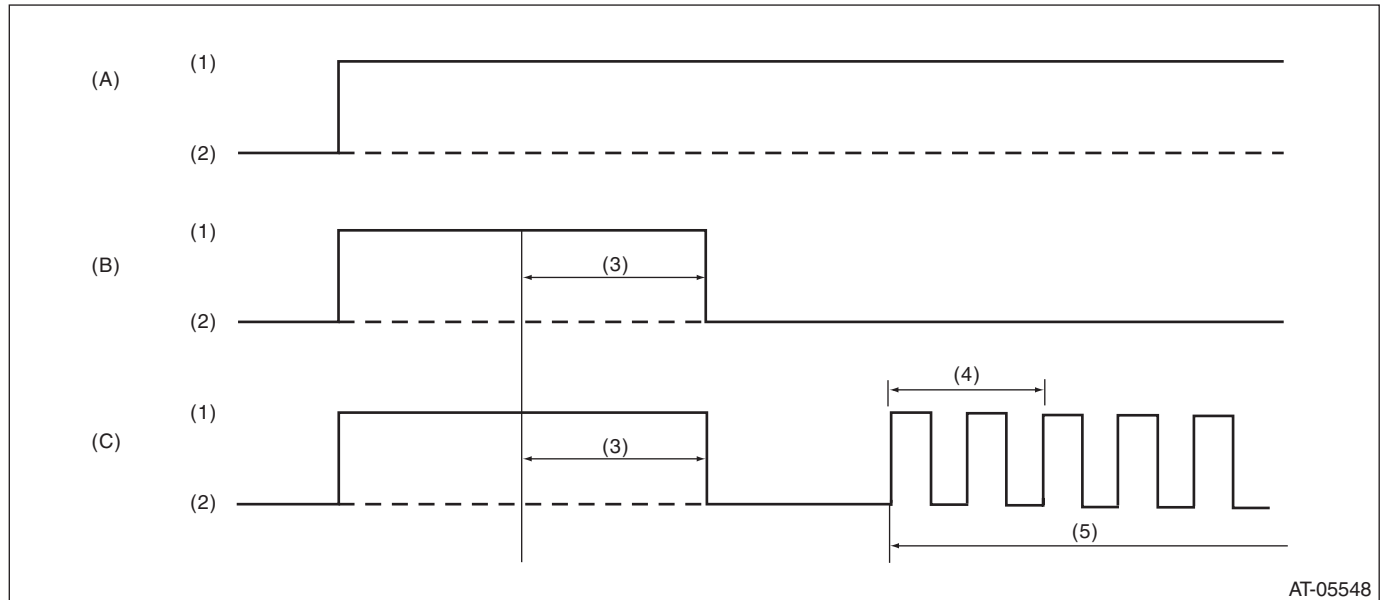
AWD warning light illuminates or blinks at start, or when AWD is faulty.

- Normal

AWD light always illuminates when the ignition switch is ON (engine OFF). Light goes off after two seconds from engine ON.

- Faulty

AWD warning light blinks at 2 Hz, when tires with different diameters are installed, or when the vehicle is driven with air pressure of any of the four tires significantly low.



AT-05548

(A) Ignition switch (engine OFF)

(B) Normal (engine ON)

(C) Faulty (engine ON)

(1) ON

(3) 2 sec.

(5) Blink

(2) OFF

(4) 1 sec.

If the AWD light does not illuminate, or illumination patterns are not as above, check the AWD light circuit.
<Ref. to 5AT(diag)-29, INSPECTION, AWD Warning Light Display.>

AWD Warning Light Display

AUTOMATIC TRANSMISSION (DIAGNOSTICS)

B: INSPECTION

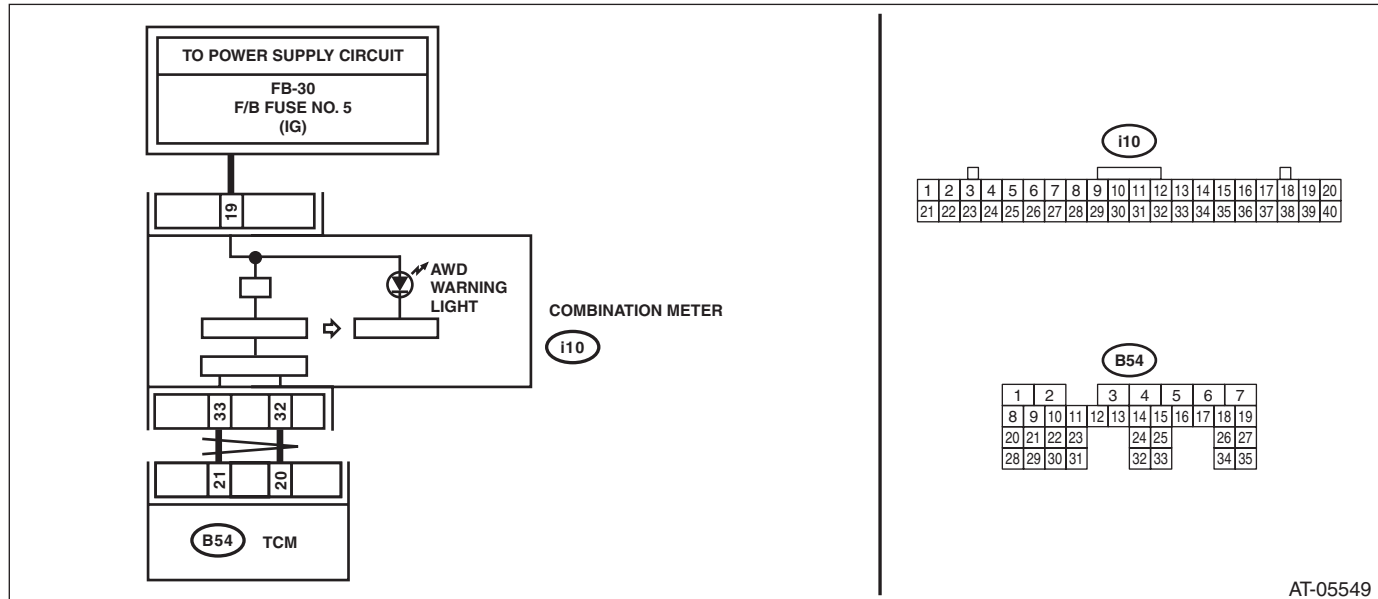
DIAGNOSIS:

- AWD light circuit is open or shorted.
- Combination meter malfunction
- TCM malfunction

TROUBLE SYMPTOM:

- When the ignition switch is turned to ON, the AWD light does not illuminate.
- AWD light remains lit after engine start.

WIRING DIAGRAM:



AT-05549

Step	Check	Yes	No
1	CHECK AWD LIGHT. Turn the ignition switch to ON.	Does the AWD light illuminate?	Go to step 2.
2	CHECK AWD LIGHT. Start the engine.	Does AWD light go off after two seconds from engine start?	Perform self diagnosis of the combination meter. <Ref. to IDI-10, INSPECTION, Combination Meter System.>
3	CHECK COMBINATION METER. Perform self diagnosis of the combination meter. <Ref. to IDI-10, INSPECTION, Combination Meter System.>	Current condition is normal. Go back to "Basic Diagnostic Procedure". <Ref. to 5AT(diag)-2, Basic Diagnostic Procedure.>	Go to step 3.
		Is there any trouble with the combination meter?	Repair the combination meter.
			Replace the TCM. <Ref. to 5AT-57, Transmission Control Module (TCM).>