

4. Release Bearing and Lever

A: REMOVAL

1) Remove the transmission assembly from vehicle body. <Ref. to 6MT-25, REMOVAL, Manual Transmission Assembly.>

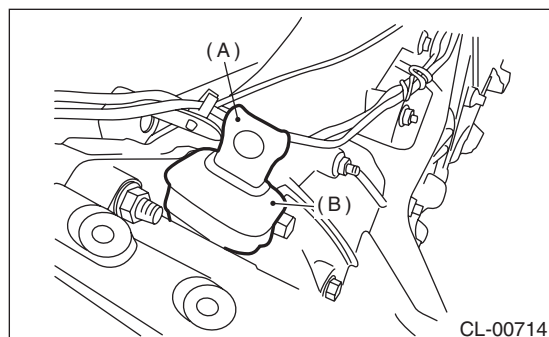
2) Remove the two clips from the clutch release lever. (non-turbo model)

CAUTION:

Be careful not to deform the clips.

3) Remove the release bearing. (non-turbo model)

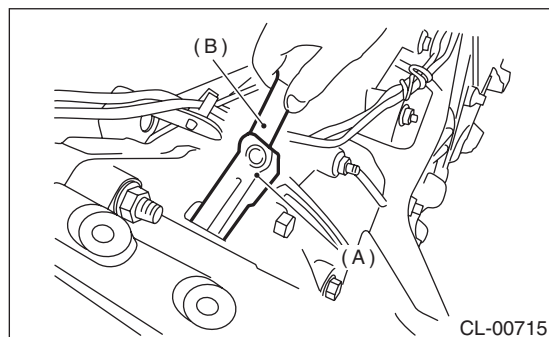
4) Remove the dust cover.



(A) Release lever

(B) Dust cover

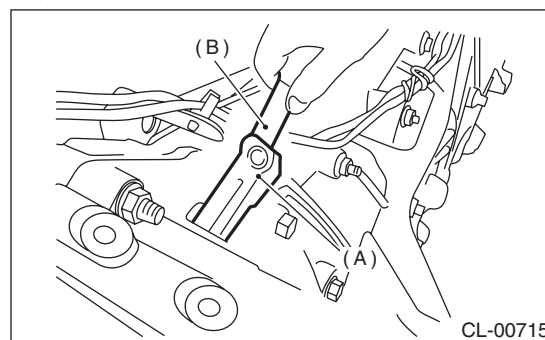
5) Remove the lever spring from the pivot with a screwdriver by accessing it through the clutch housing release lever hole. Then remove the release lever. (non-turbo model)



(A) Release lever

(B) Screwdriver

6) Remove the lever spring from the pivot with a screwdriver by accessing it through the clutch housing release lever hole. Then remove the release lever and release bearing as a unit. (turbo model)



(A) Release lever

(B) Screwdriver

B: INSTALLATION

NOTE:

Apply the specified grease to lubricate to the following points before installation.

- Contact surface of lever and pivot
- Contact surface of lever and bearing
- Transmission main shaft spline

Grease

NICHIMOLY N-130 (Part No. K0879Y0501) or equivalent

1) Temporarily assemble the release bearing to the release lever. (turbo model)

2) While pushing the release lever to the pivot and twisting it to both sides, fit the lever spring onto the raised portion of the pivot. (non-turbo model)

NOTE:

Observing from the main case hole, check that the lever spring is installed securely.

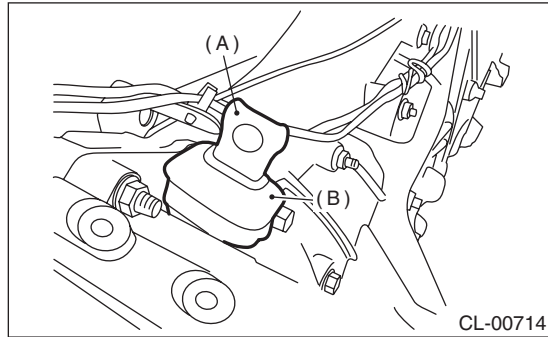
3) Install the release bearing by inserting the release lever into the clutch housing release lever hole. Then, fit the lever spring onto the raised portion of the pivot by pushing the release lever to the pivot and twisting it to both sides. (turbo model)

4) Install the release bearing and fasten it with two clips. (non-turbo model)

Release Bearing and Lever

CLUTCH SYSTEM

5) Install the dust cover.



- (A) Release lever
(B) Dust cover

6) Check the bearing for smooth movement by operating the release lever.

7) Apply grease to the contact point of the release lever and operating cylinder.

Grease

NICHIMOLY N-130 (Part No. K0879Y0501) or equivalent

8) Install the transmission assembly. <Ref. to 6MT-29, INSTALLATION, Manual Transmission Assembly.>

C: INSPECTION

1. RELEASE BEARING

CAUTION:

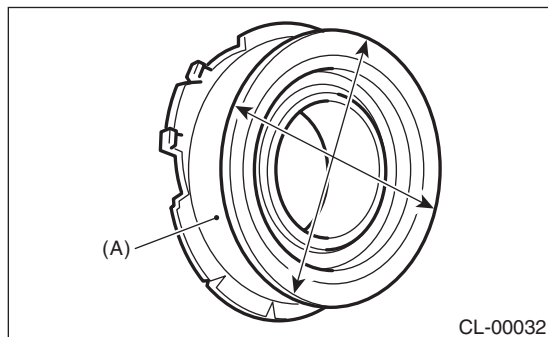
Because this bearing is grease-sealed and is a non-lubrication type, do not wash with gasoline or solvents when servicing the clutch.

1) Check the bearing for smooth movement by applying force to the bearing in the radial direction.

Radial direction stroke:

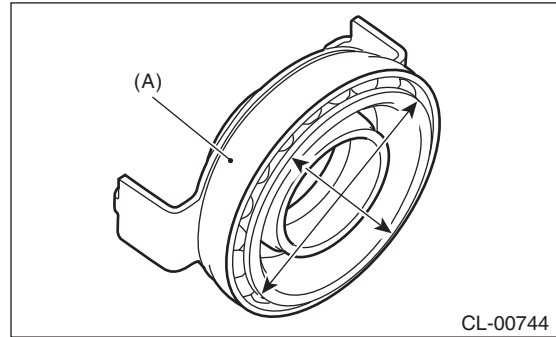
1.6 mm (0.063 in)

- Non-turbo model



- (A) Bearing case

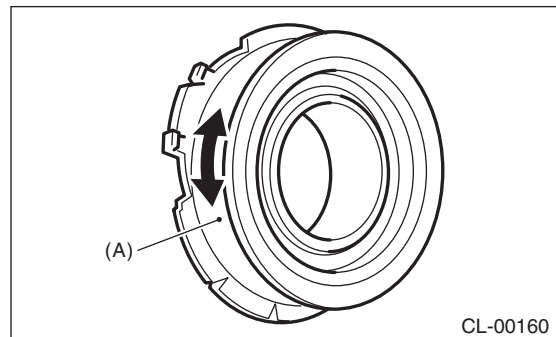
- Turbo model



- (A) Bearing case

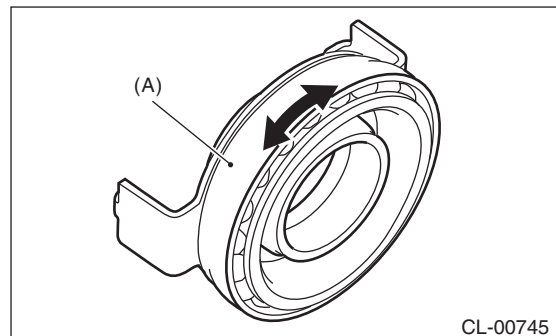
2) While applying force to the bearing in the rotational direction, check the bearing for smooth rotation.

- Non-turbo model



- (A) Bearing case

- Turbo model



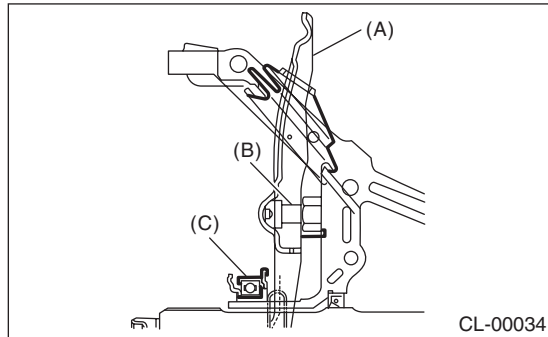
- (A) Bearing case

3) Check for wear or damage at the bearing case surface in contact with the lever.

2. RELEASE LEVER

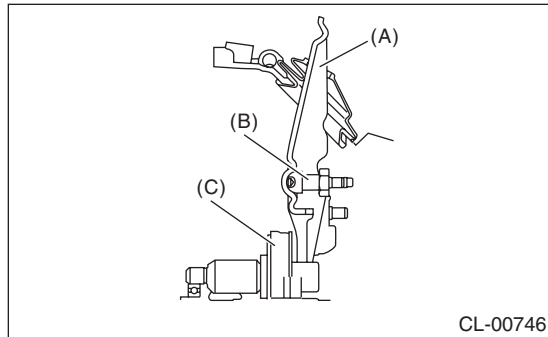
Check the pivot portion of the lever and the contact area with the release bearing case for wear.

- Non-turbo model



- (A) Release lever
- (B) Pivot
- (C) Release bearing

- Turbo model



- (A) Release lever
- (B) Pivot
- (C) Release bearing