

### 13.AWD Warning Light Display

#### A: OPERATION

AWD light illuminates or blinks, when the AWD is in special control condition and AWD has malfunction.

- When normal

AWD light always illuminates when the ignition switch is ON (engine OFF). Light goes off after two seconds from engine ON.

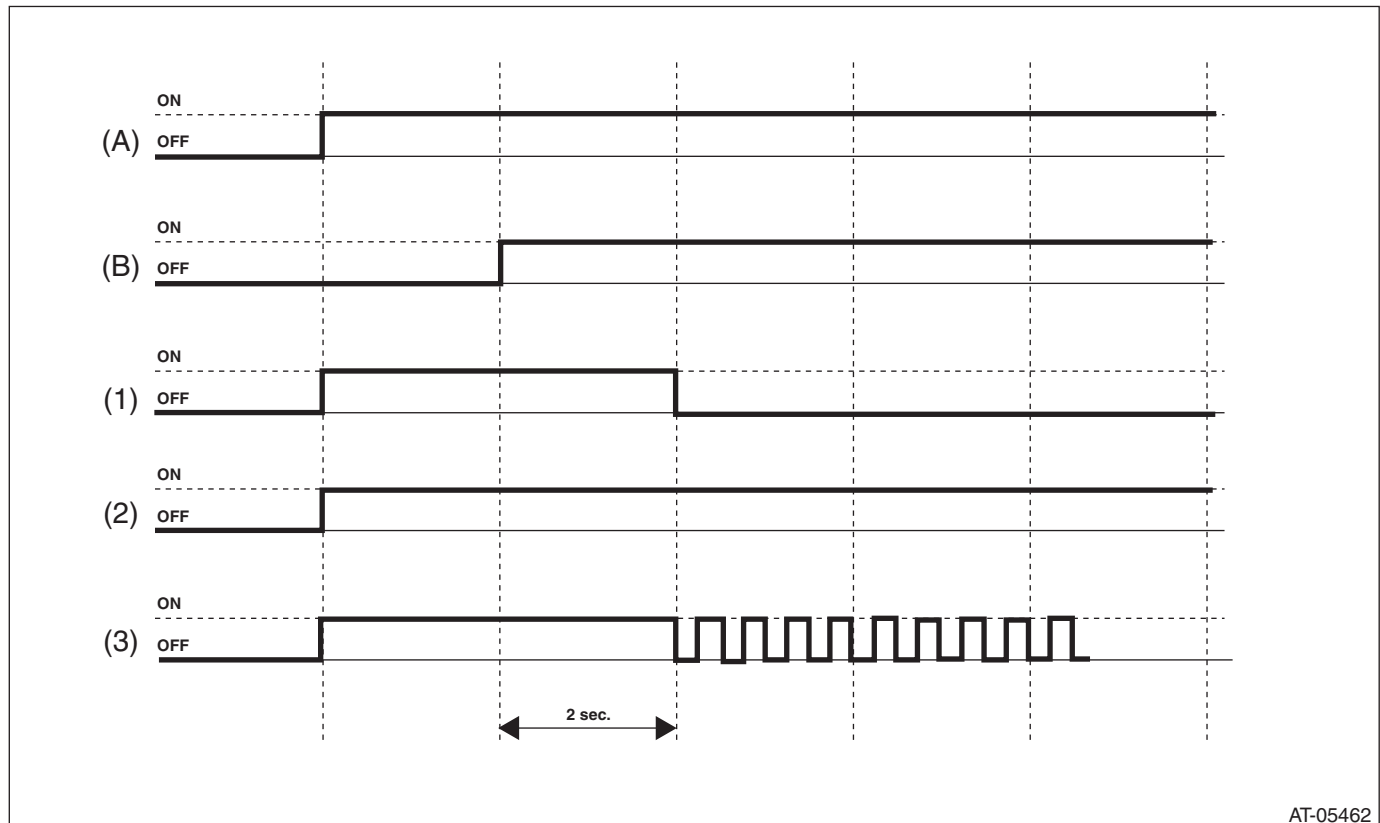
- When FF mode is selected

AWD light illuminates, when the AWD ON/OFF switching function is “FF mode” with engine ON.

- When malfunction is detected

AWD light blinks at 2 Hz when any of following malfunctions are detected with engine ON.

1. When tire with different diameter is installed, or air pressure of any of four wheels is excessively low
2. When “Rear differential inspection mode” is judged as NG <Ref. to DI-83, Rear Differential Inspection Mode.>



AT-05462

(A) Ignition switch condition

(B) Engine condition

(1) When normal

(2) When FF mode is selected

(3) When malfunction is detected

If the AWD light does not illuminate, or illumination patterns are not as above, check the AWD light circuit.  
<Ref. to CVT(diag)-26, INSPECTION, AWD Warning Light Display.>

# AWD Warning Light Display

CONTINUOUSLY VARIABLE TRANSMISSION (DIAGNOSTICS)

## B: INSPECTION

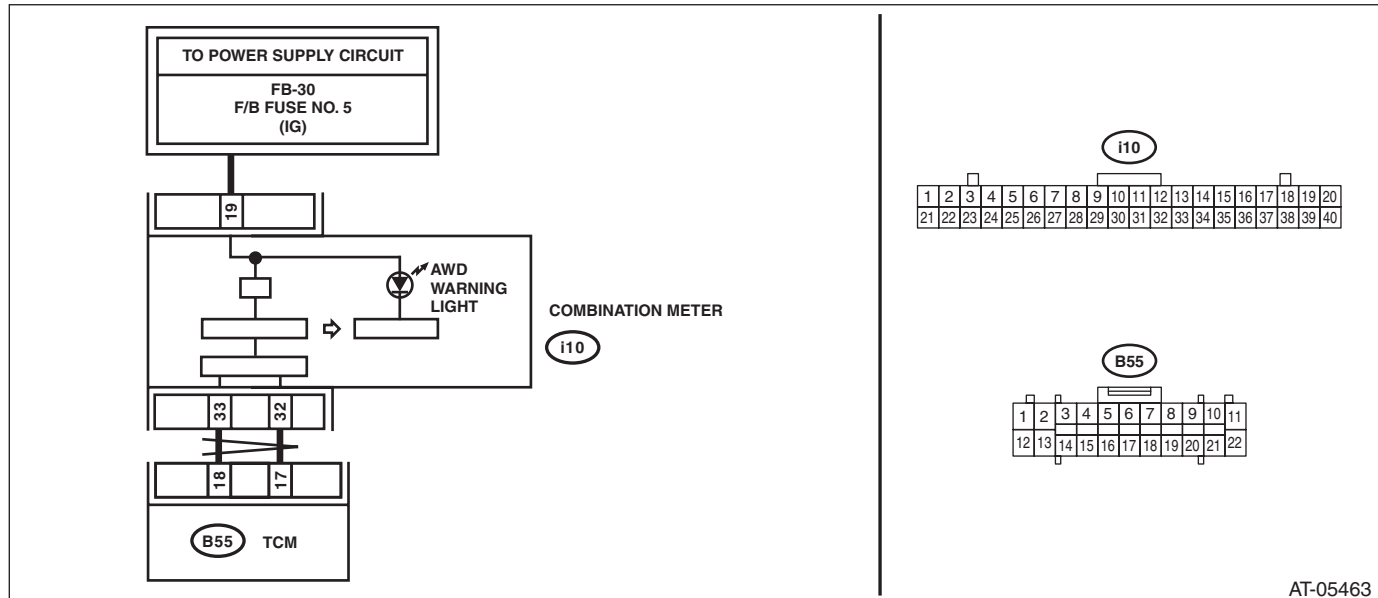
### DIAGNOSIS:

- AWD light circuit is open or shorted.
- Combination meter malfunction
- TCM is in AWD special control mode.

### TROUBLE SYMPTOM:

- When the ignition switch is turned to ON, the AWD light does not illuminate.
- AWD light remains lit after engine start.
- AWD light is blinking immediately after engine start.

### WIRING DIAGRAM:



Step	Check	Yes	No
1	<b>CHECK AWD LIGHT.</b> Turn the ignition switch to ON.	Does the AWD light illuminate?	Go to step 2.
2	<b>CHECK AWD LIGHT.</b> Start the engine.	Does AWD light go off after two seconds from engine start?	Perform self diagnosis of the combination meter. <Ref. to IDI-10, INSPECTION, Combination Meter System.>
3	<b>CHECK DTC.</b> Read the DTC relating the TCM using the Subaru Select Monitor.	Does AWD light go off after two seconds from engine start?	Current condition is normal. Go back to "Basic Diagnostic Procedure". <Ref. to CVT(diag)-2, Basic Diagnostic Procedure.>
4	<b>CHECK DTC.</b> Read the DTC relating the TCM using the Subaru Select Monitor.	Is DTC displayed?	Go to step 4.
5	<b>CHECK AWD LIGHT.</b> Check the display of AWD light after engine start.	Is AWD light illuminating?	Go to step 6.
6	<b>CHECK AWD LIGHT.</b> Check the display of AWD light after engine start.	Is AWD light blinking at 2 Hz?	Go to step 7.
7	<b>CHECK AWD LIGHT.</b> Check the display of AWD light after engine start.	Is AWD light blinking at 2 Hz?	Go to step 8.

# AWD Warning Light Display

CONTINUOUSLY VARIABLE TRANSMISSION (DIAGNOSTICS)

Step	Check	Yes	No
<b>6</b> <b>CHECK AWD ON/OFF SWITCHING FUNCTION.</b> Using the Subaru Select Monitor, select the {AWD ON/OFF switching mode} from «AT related learning & inspecting mode», and check the current mode. <Ref. to CVT-45, AWD ON/OFF Switching Mode.>	Is the message “Currently, vehicle is AWD. Do you change to FF?” displayed?	Go to step 8.	If the message “At present, the vehicle is in FF. Switch to AWD?” is displayed, select “OK”, and switch to AWD mode.
<b>7</b> <b>CHECK REAR DIFFERENTIAL.</b> Using the Subaru Select Monitor, select the {Rear differential inspection mode} from «AT related learning & inspecting mode», and check. <Ref. to DI-83, Rear Differential Inspection Mode.>	Does AWD light go off after inspection is finished normally?	Current condition is normal. Go back to “Basic Diagnostic Procedure”. <Ref. to CVT(diag)-2, Basic Diagnostic Procedure.>	Go to step 8.
<b>8</b> <b>CHECK COMBINATION METER.</b> Perform self diagnosis of the combination meter. <Ref. to IDI-10, INSPECTION, Combination Meter System.>	Is there any trouble with the combination meter?	Repair the combination meter.	Check the TCM.