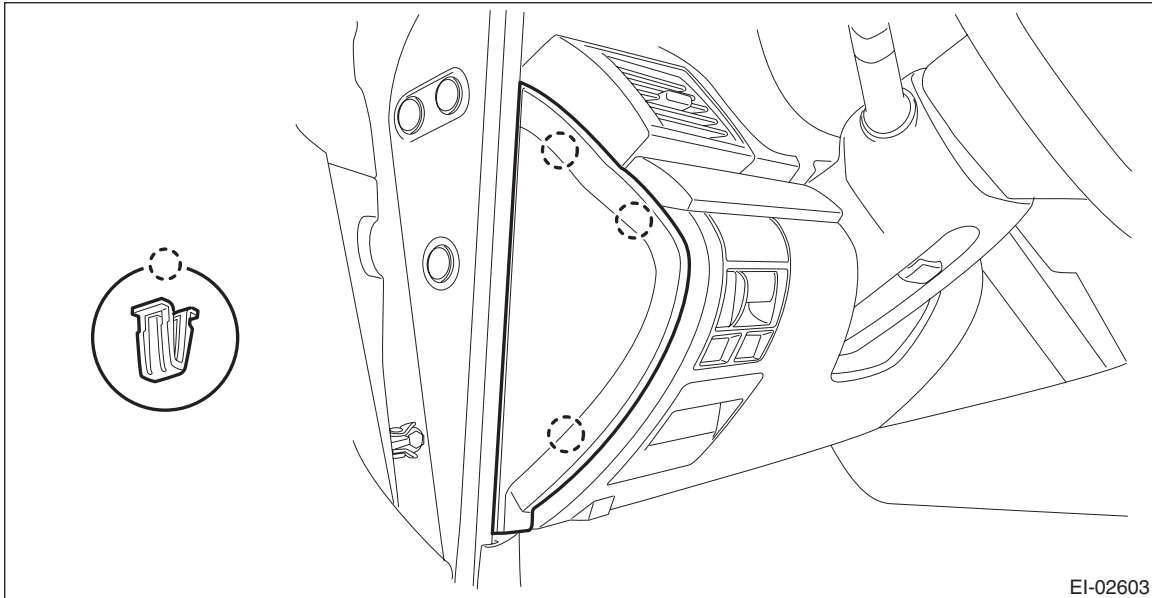


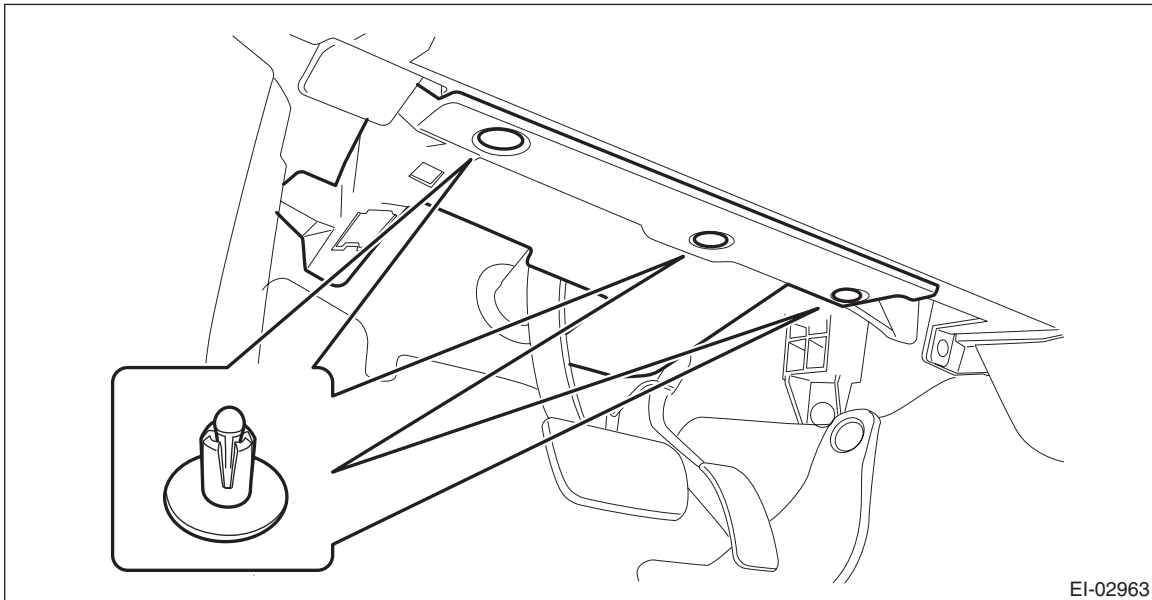
4. Parking Brake Switch

A: REMOVAL

- 1) Disconnect the ground cable from battery.
- 2) Remove the instrument panel lower cover.
 - (1) Remove the clips, and remove the instrument panel side cover LH.



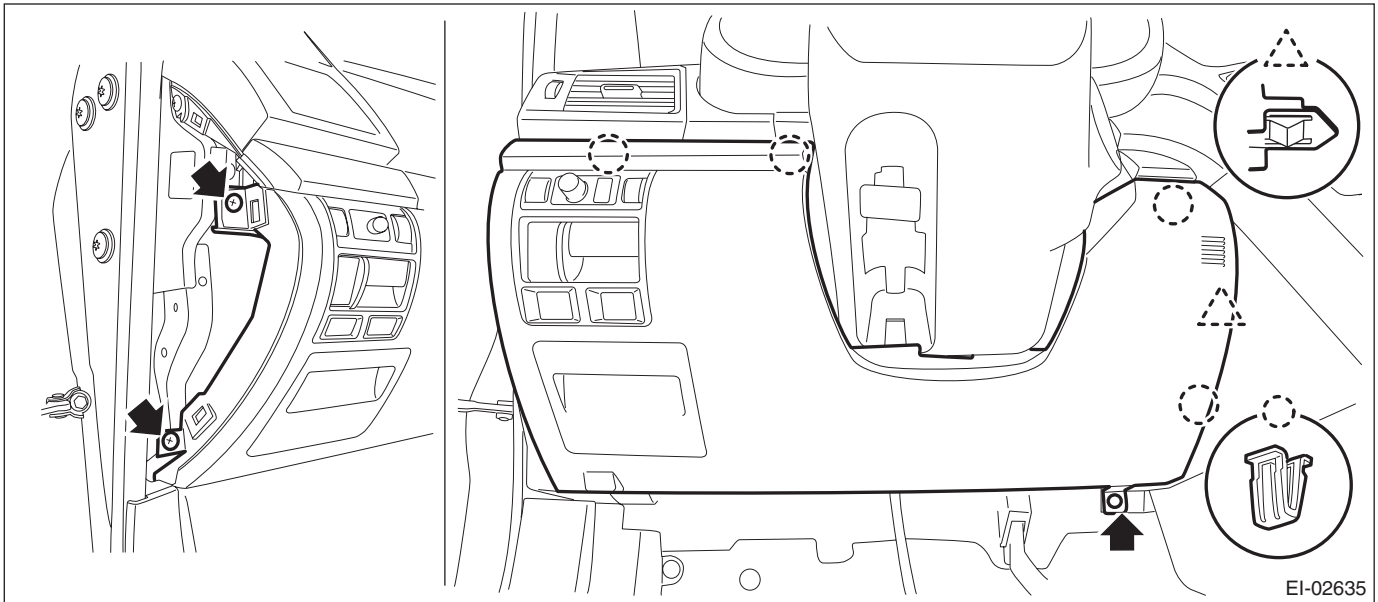
- (2) Remove the clips and data link connector, and remove the instrument panel lower cover under.



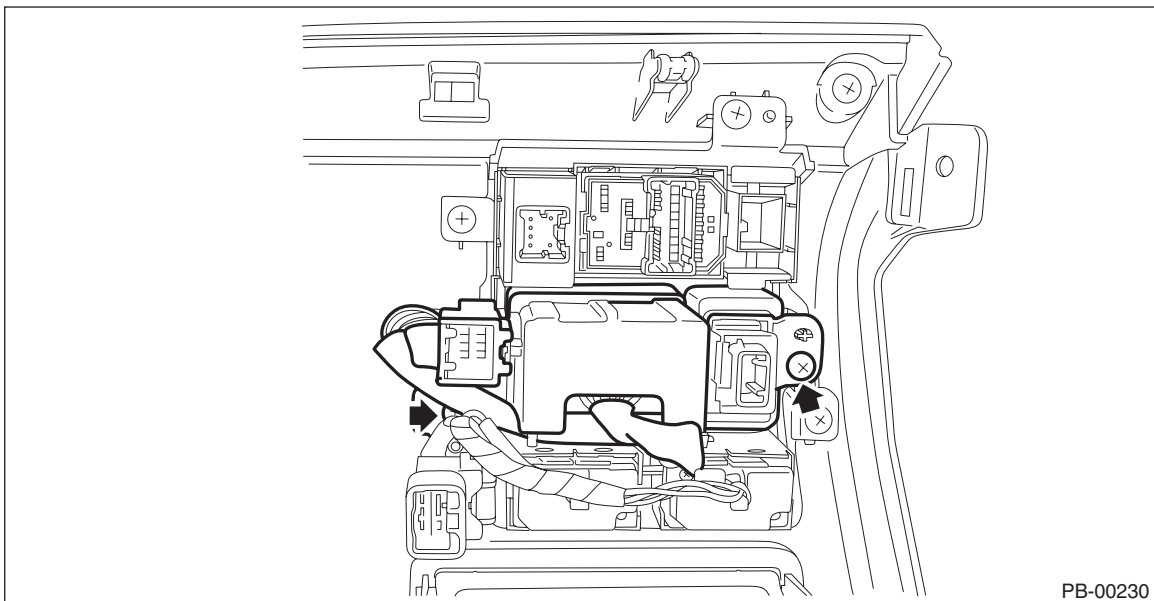
Parking Brake Switch

PARKING BRAKE

(3) Remove the screws and clips and release the claws, and remove the instrument panel lower cover while disconnecting the harness connectors.



3) Remove the screws and remove the parking brake switch.



B: INSTALLATION

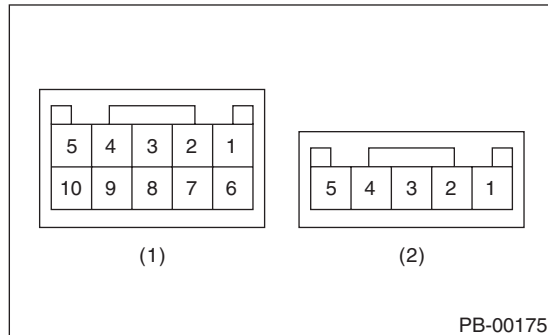
Install each part in the reverse order of removal.

C: INSPECTION

1. PARKING BRAKE CONTROL SWITCH

Check the resistance between parking brake control switch terminals.

| Switch position | Terminal No. | Specification |
|-----------------|--------------|----------------------|
| Press | 2 and 9 | Less than 1 Ω |
| | 3 and 9 | |
| Neutral | 2 and 9 | Less than 1 Ω |
| | 1 and 3 | |
| Pull | 1 and 3 | Less than 1 Ω |
| | 2 and 3 | |



(1) Parking brake control switch

(2) Hill hold switch

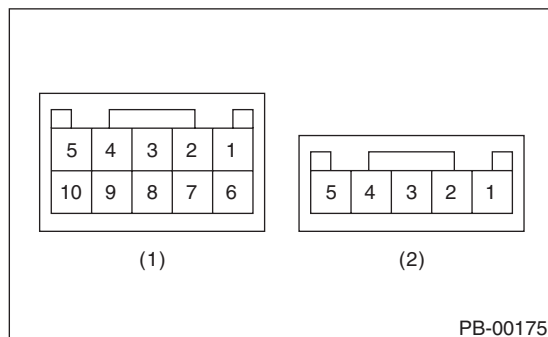
NOTE:

Replace the switch if the inspection result is not within the standard value.

2. HILL HOLD SWITCH

Check the resistance between hill hold switch terminals.

| Switch position | Terminal No. | Specification |
|-----------------|--------------|----------------------|
| ON | 1 and 4 | Less than 1 Ω |
| OFF | — | 1 M Ω or more |



(1) Parking brake control switch

(2) Hill hold switch

NOTE:

Replace the switch if the inspection result is not within the standard value.