

# General Description

VEHICLE DYNAMICS CONTROL (VDC)

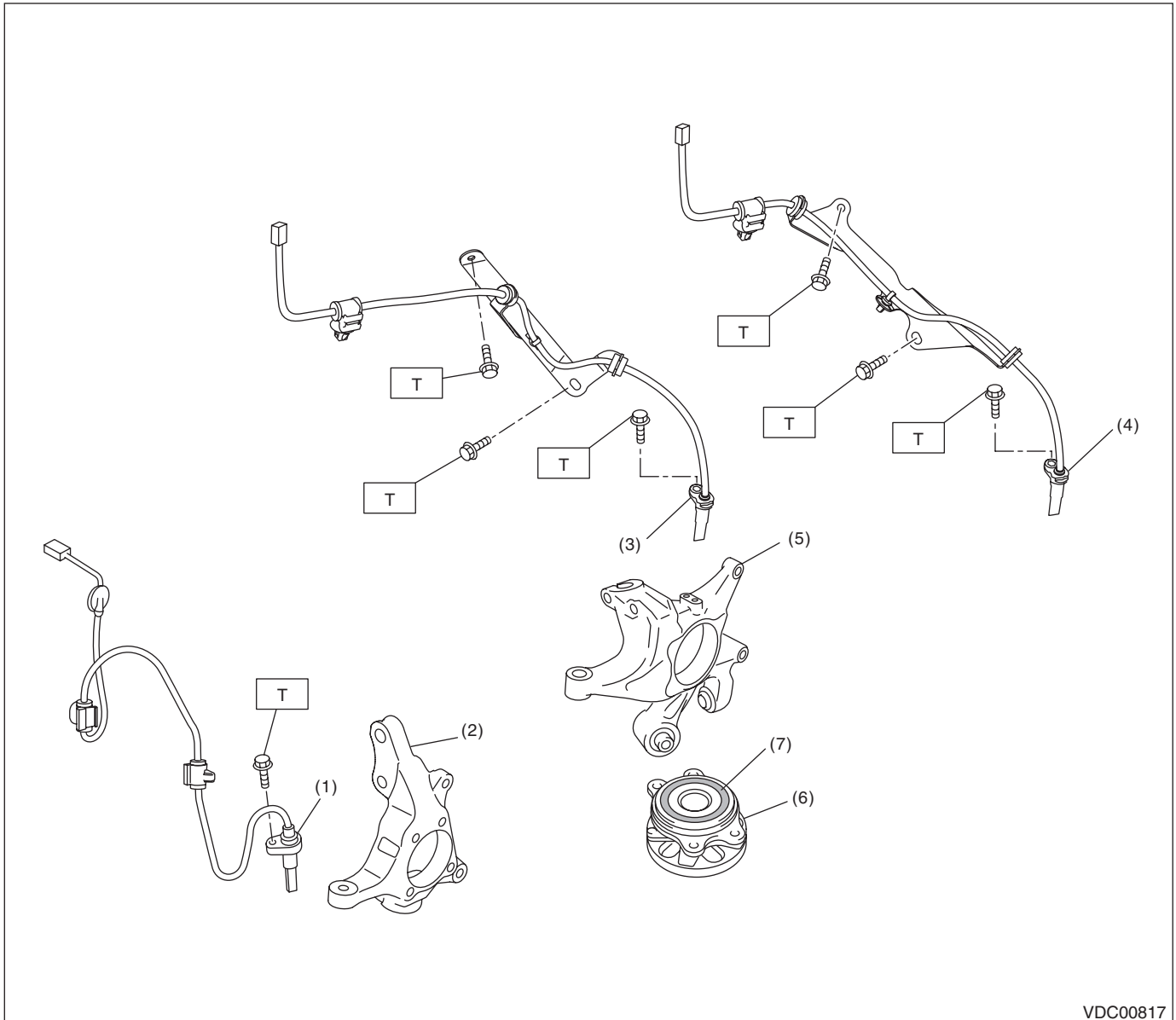
## 1. General Description

### A: SPECIFICATION

Item				Specification or identification	
ABS wheel speed sensor	ABS wheel speed sensor gap (for reference)	Front		0.77 — 1.43 mm (0.030 — 0.056 in)	
		Rear		0.64 — 1.56 mm (0.025 — 0.061 in)	
	Identifications of harness (marks, color)	Front	Except for OBK model	S1 (Pink)	
			OBK model	S2 (Blue)	
		Rear	RH (Except for OBK model)	S3 (Yellow)	
			LH (Except for OBK model)	S4 (White)	
			RH (OBK model)	S5 (Red)	
			LH (OBK model)	S6 (Light green)	
VDCCM&H/U Identification				V1	

## B: COMPONENT

### 1. ABS WHEEL SPEED SENSOR



VDC00817

- |  |                       |
|--|-----------------------|
| (1) Front ABS wheel speed sensor                       | (5) Rear axle housing |
| (2) Front axle housing                                 | (6) Hub unit bearing  |
| (3) Rear ABS wheel speed sensor (except for OBK model) | (7) Magnetic encoder  |
| (4) Rear ABS wheel speed sensor (OBK model)            |                       |

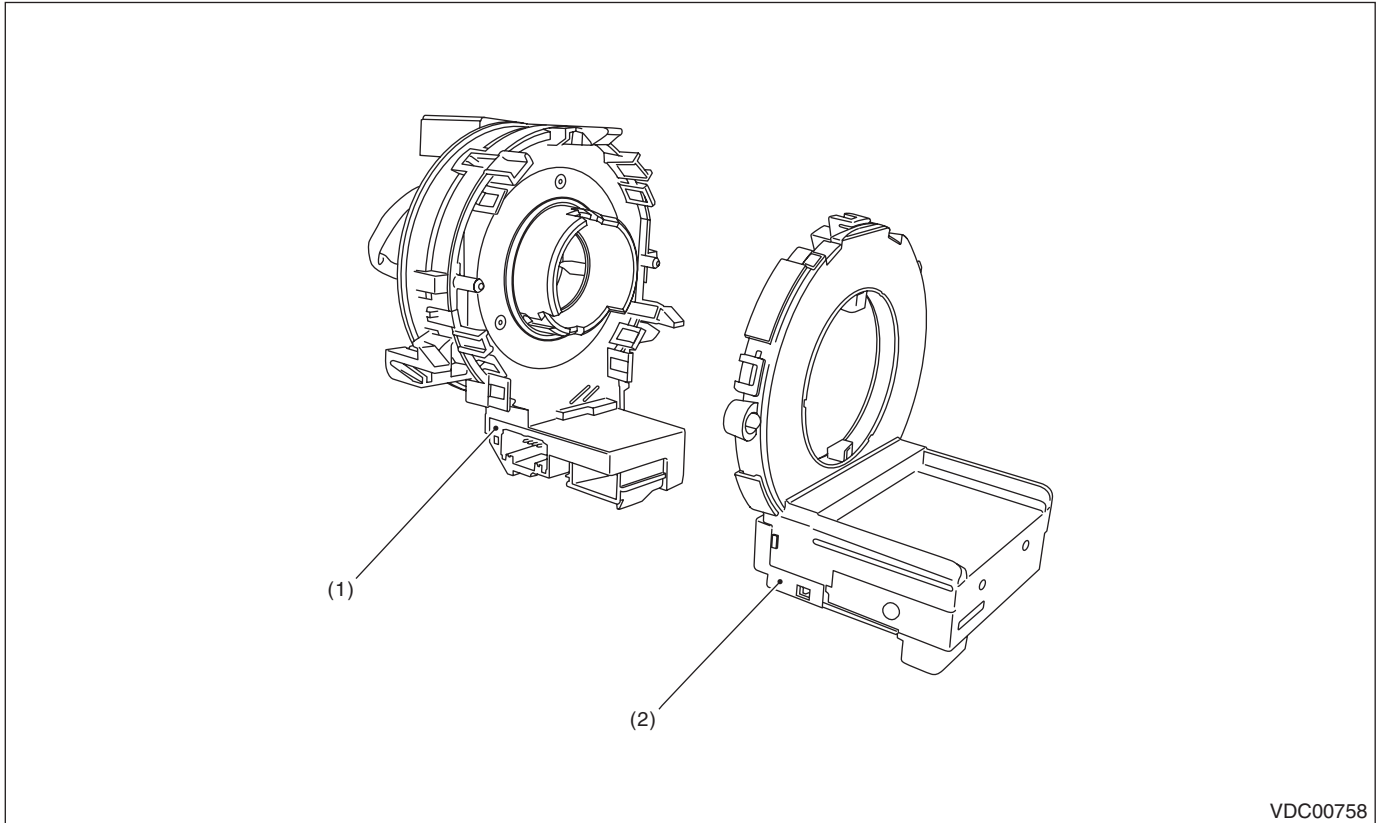
**Tightening torque: N·m (kgf-m, ft-lb)**

**T: 7.5 (0.76, 5.5)**

# General Description

VEHICLE DYNAMICS CONTROL (VDC)

## 2. STEERING ANGLE SENSOR

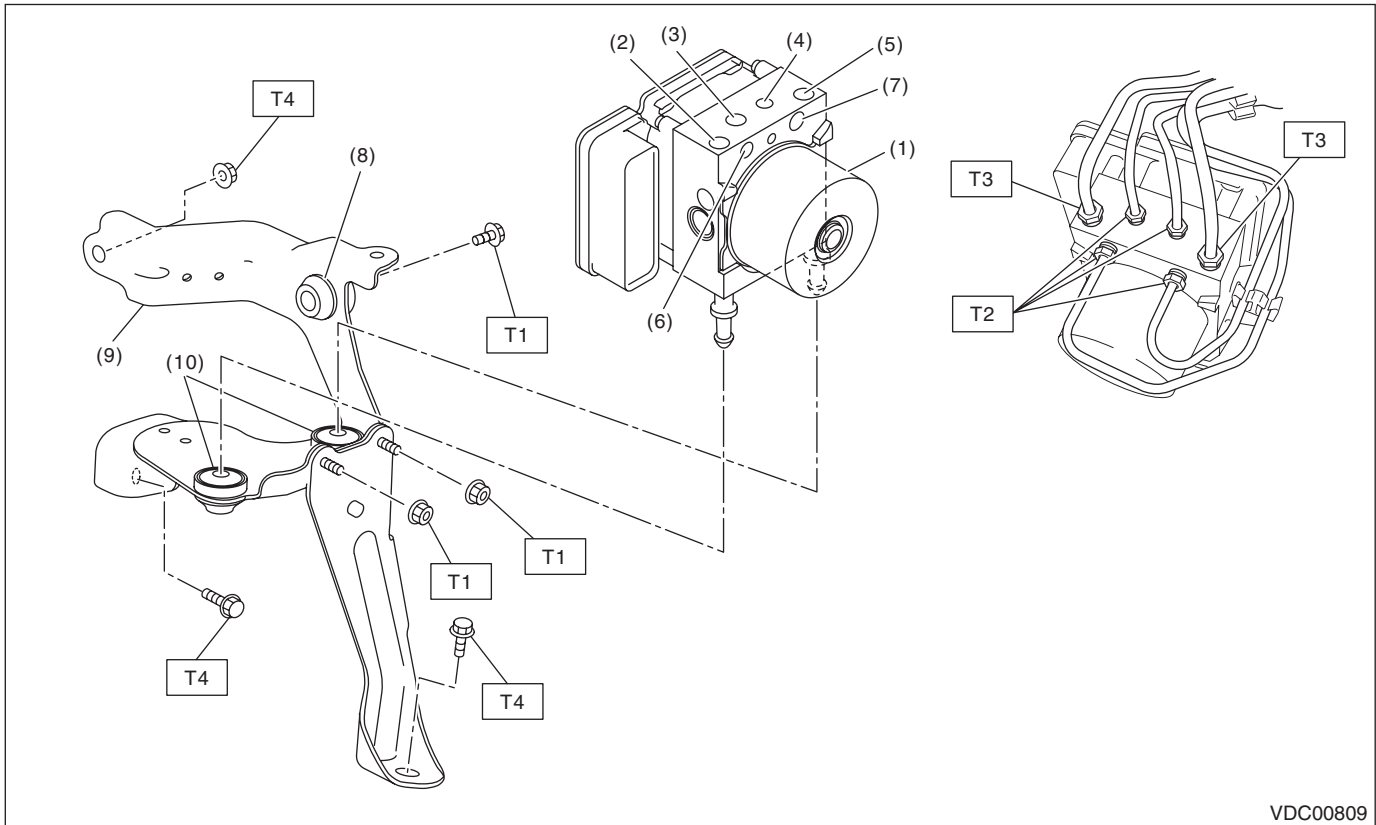


VDC00758

(1) Steering roll connector

(2) Steering angle sensor

## 3. VDC CONTROL MODULE & HYDRAULIC CONTROL UNIT (VDCCM&H/U)



VDC00809

- |   |                     |
|---|---------------------|
| (1) VDC control module and hydraulic control unit (VDCCM&H/U) | (6) Rear RH outlet  |
| (2) Secondary inlet   | (7) Rear LH outlet  |
| (3) Front LH outlet   | (8) Damper & spacer |
| (4) Front RH outlet   | (9) Bracket         |
| (5) Primary inlet   | (10) Damper         |

### ***Tightening torque: N·m (kgf-m, ft-lb)***

- |            |                        |
|------------|------------------------|
| <b>T1:</b> | <b>7.5 (0.76, 5.5)</b> |
| <b>T2:</b> | <b>15 (1.53, 11.1)</b> |
| <b>T3:</b> | <b>19 (1.94, 14.0)</b> |
| <b>T4:</b> | <b>33 (3.36, 24.3)</b> |

## C: CAUTION

- Wear appropriate work clothing, including a cap, protective goggles and protective shoes when performing any work.
- Remove contamination including dirt and corrosion before removal, installation or disassembly.
- Keep the disassembled parts in order and protect them from dust and dirt.
- Before disconnecting connectors of sensors or units, be sure to disconnect the ground cable from battery.
- Before removal, installation or disassembly, be sure to clarify the failure. Avoid unnecessary removal, installation, disassembly and replacement.
- Vehicle components are extremely hot after driving. Be wary of receiving burns from heated parts.
- Be sure to tighten fasteners including bolts and nuts to the specified torque.
- Place shop jacks or rigid racks at the specified points.

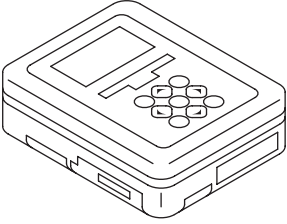
## General Description

VEHICLE DYNAMICS CONTROL (VDC)

---

### D: PREPARATION TOOL

#### 1. SPECIAL TOOL

ILLUSTRATION	TOOL NUMBER	DESCRIPTION	REMARKS
 ST1B022XU0	1B022XU0	SUBARU SELECT MONITOR III KIT	Used for setting of each function and trouble-shooting for electrical system.

#### 2. GENERAL TOOL

TOOL NAME	REMARKS
Circuit tester	Used for measuring resistance and voltage.
Pressure gauge	Used for measuring oil pressure.
Oscilloscope	Used for measuring the sensor.