

12. Curtain Airbag Sensor

A: REMOVAL

1. SEDAN MODEL

1) Disconnect the ground cable from battery and wait for at least 60 seconds before starting work.

CAUTION:

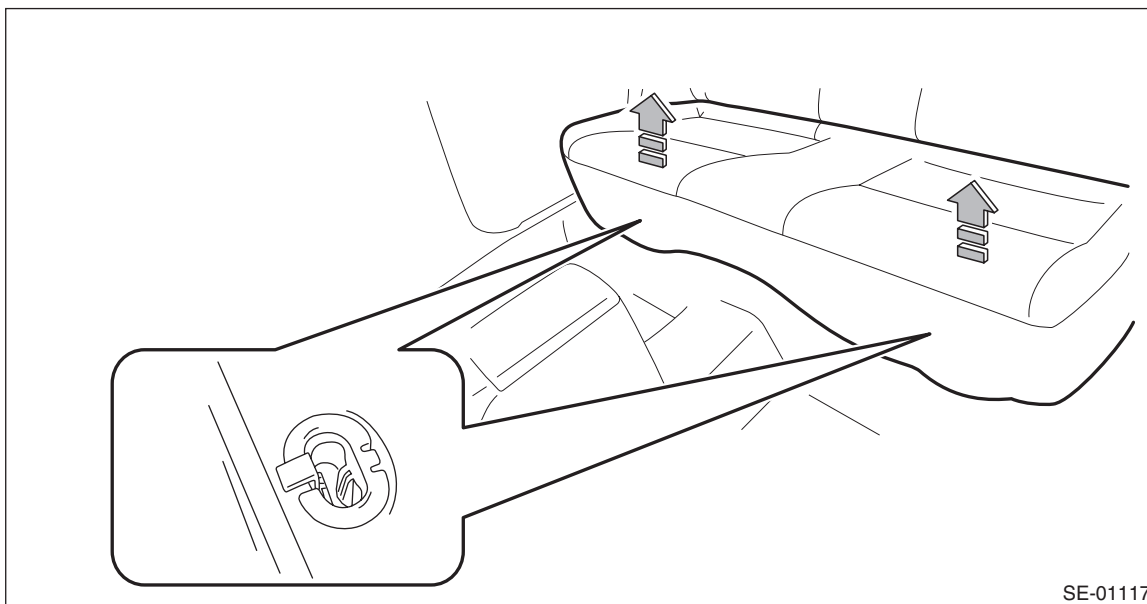
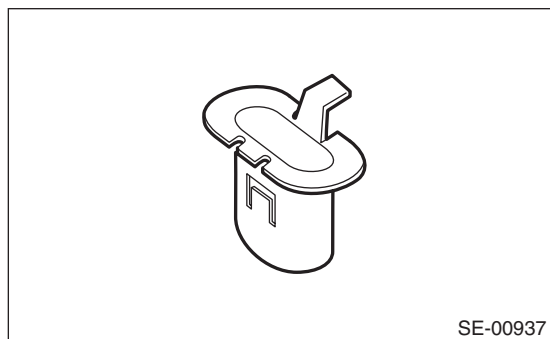
The airbag system is fitted with a backup power supply. After disconnecting the battery ground cable, the airbag may deploy if you do not wait for 60 seconds before starting the service of airbag system.

2) Remove the rear seat cushion assembly.

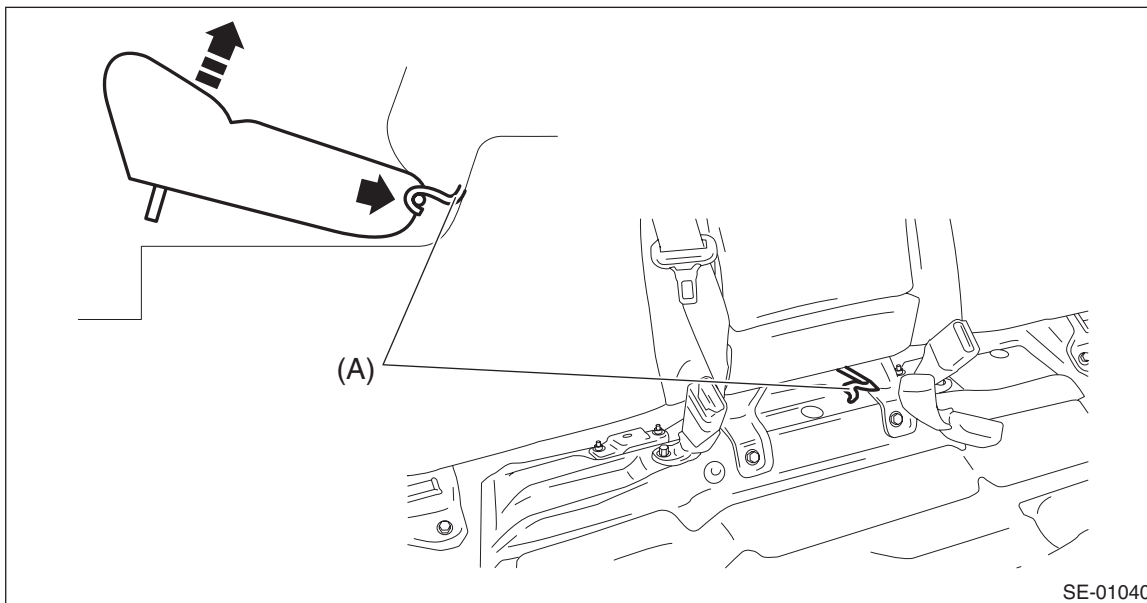
(1) Pull up the seat cushion and release the hook.

CAUTION:

If the hook is disconnected from the vehicle body, replace the hook with the new part to prevent the decline of the fixed force of the seat.



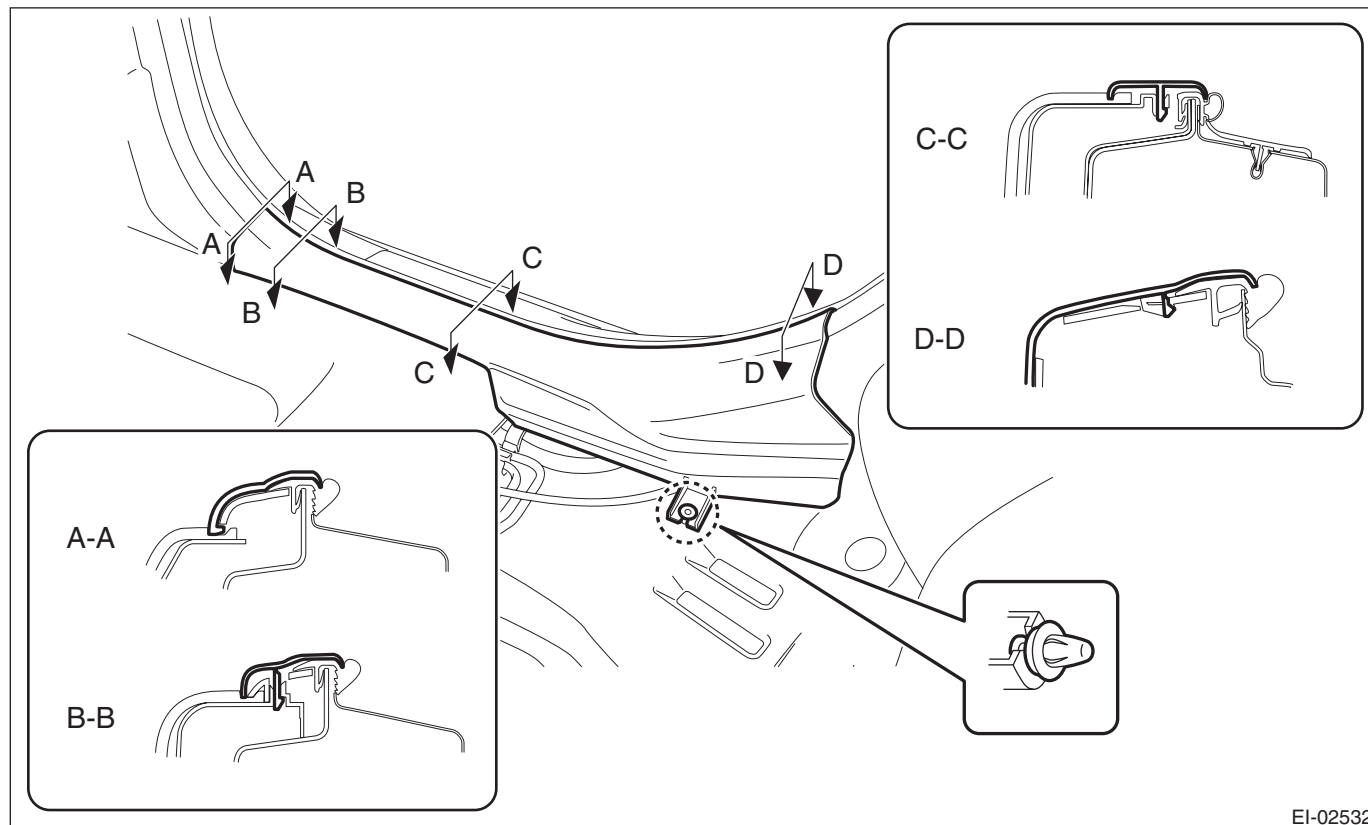
(2) Remove the hook (A) by pushing it back while lifting the front side of the seat cushion, and remove the seat cushion assembly.



3) Release the clips and claws, and then remove the side sill cover - rear INN. (On the side where airbag sensor is removed)

CAUTION:

Do not pull with excessive force. Doing so may damage the claws of the side sill cover INN.



NOTE:

To release the claws of the side sill cover INN, the following steps are recommended.

1. Take out the weather strip from under the side sill cover INN.
2. Turn over the floor mat and release the claw (C-C and D-D) by accessing from behind the side sill cover INN.

Curtain Airbag Sensor

AIRBAG SYSTEM

4) Remove the rear quarter trim LWR. (On the side where airbag sensor is removed)

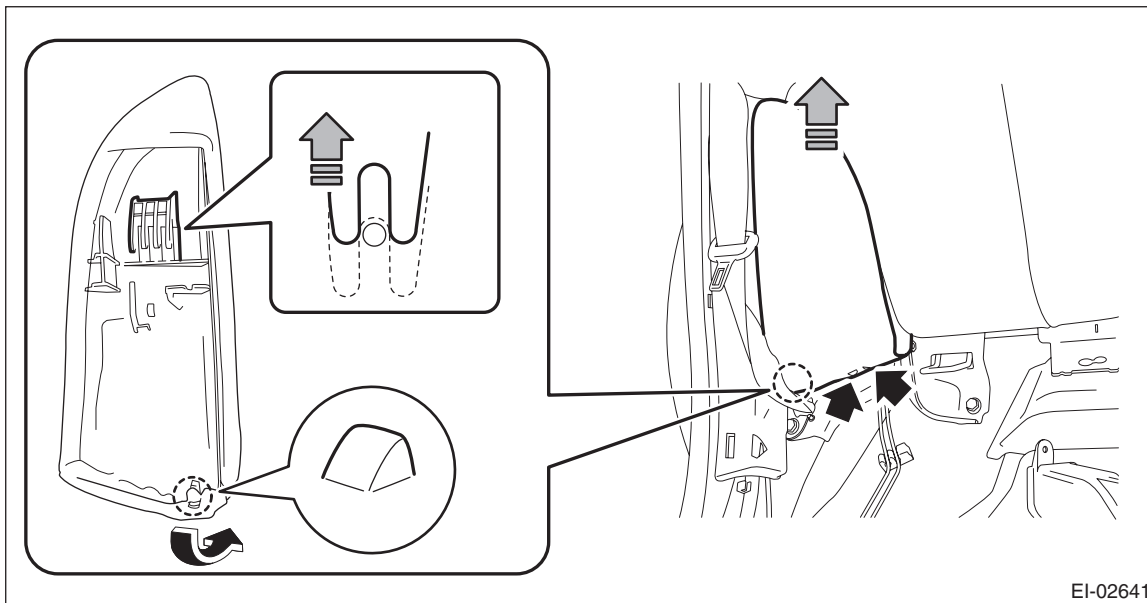
(1) Remove the backrest side pad.

a) Remove the screws.

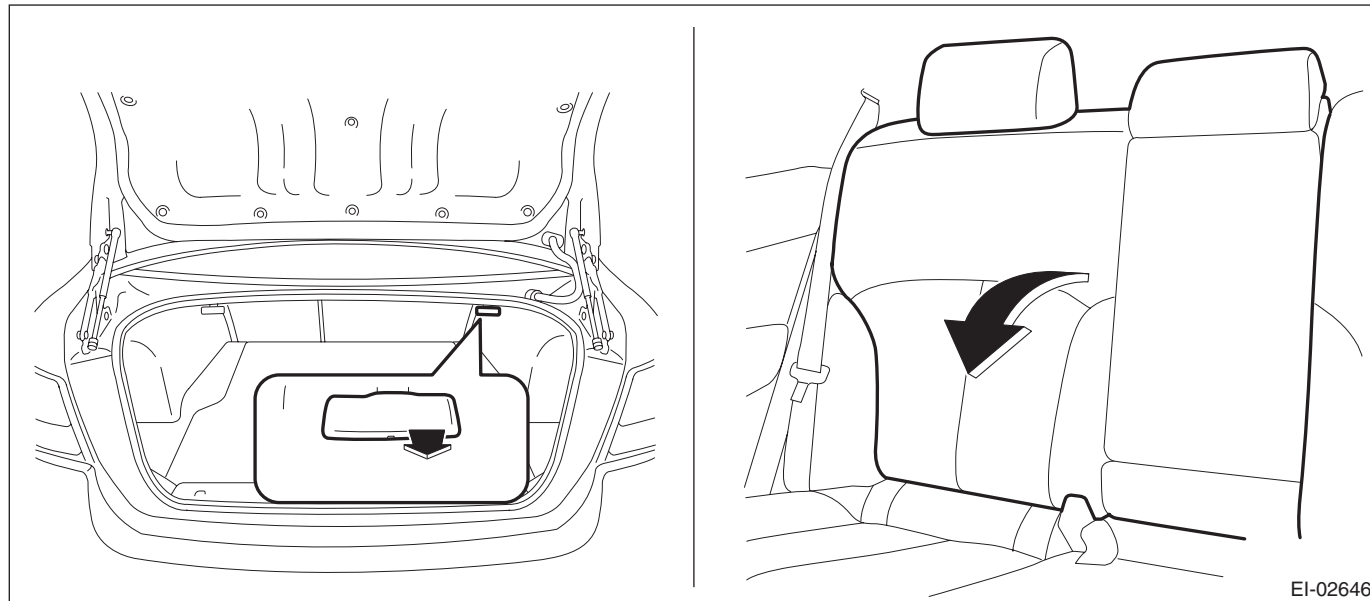
Preparation tool: Stubby screwdriver

b) Turn over the bottom end of the backrest side pad in the forward direction so that the claws are released.

c) Remove the backrest side pad by pulling it up.

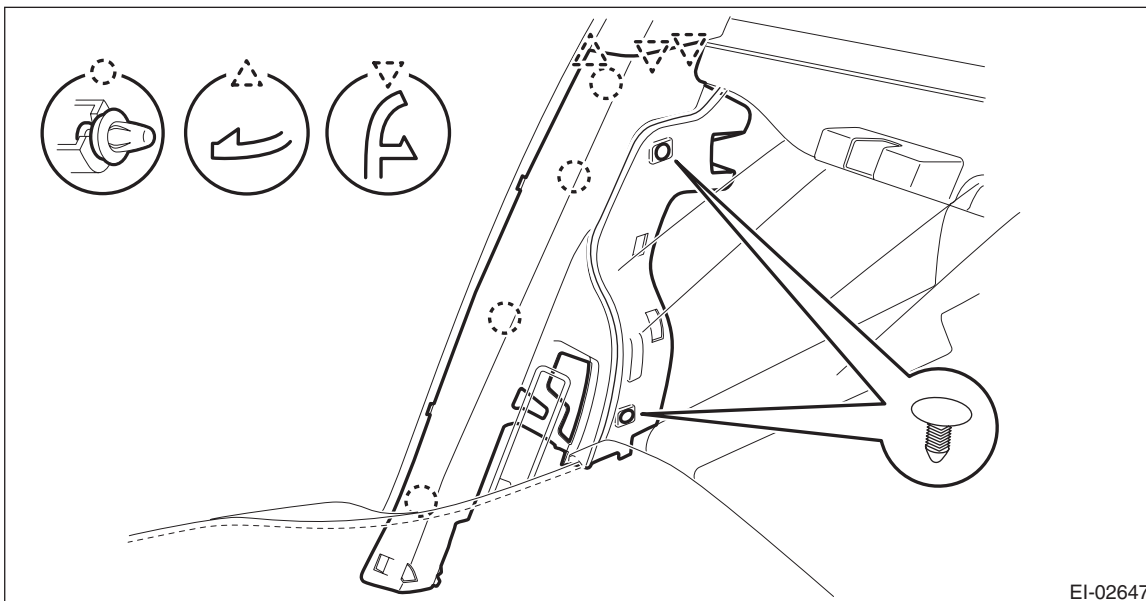


(2) Pull the release lever in the trunk room, and then tilt the backrest forward.



(3) Release the clips of the trunk trim panel assembly-side.

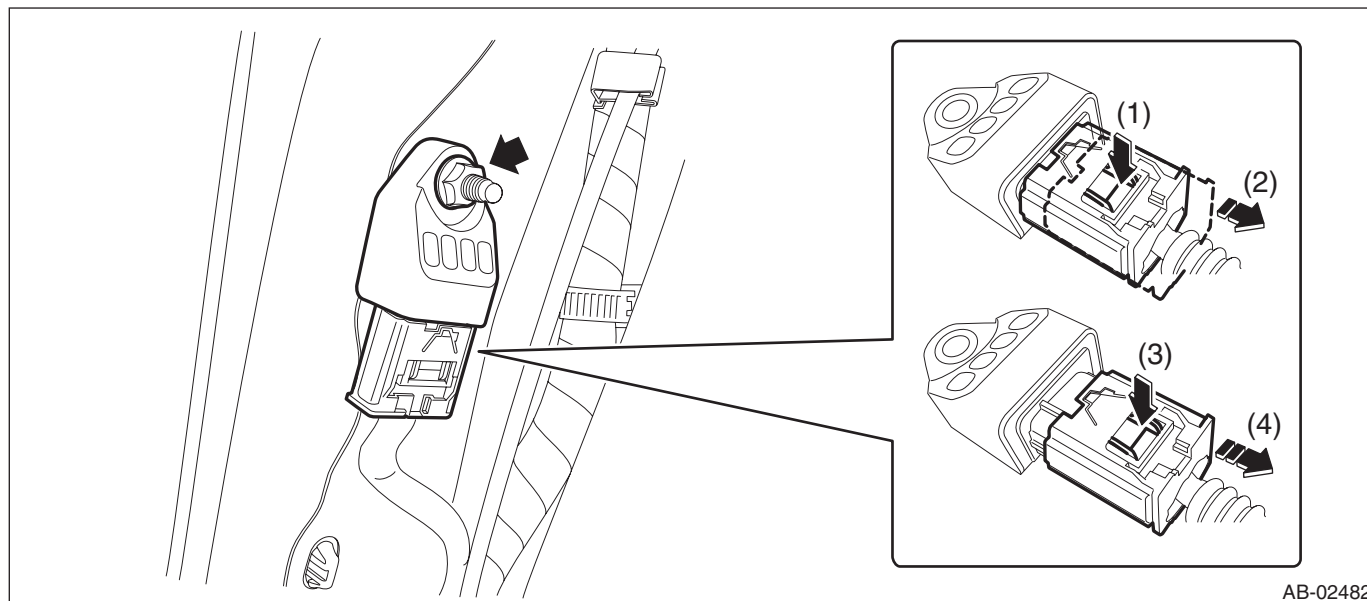
- (4) Remove the clips, and remove the rear quarter trim LWR.



EI-02647

- 5) Remove the nut and then remove the curtain airbag sensor assembly.

- (1) Push the lock arm.
- (2) Holding outer part, pull it one step in the direction of arrow.
- (3) Push the lock arm again.
- (4) Holding outer part, pull it in the direction of arrow to disconnect the connector.



AB-02482

Curtain Airbag Sensor

AIRBAG SYSTEM

2. OUTBACK MODEL

1) Disconnect the ground cable from battery and wait for at least 60 seconds before starting work.

CAUTION:

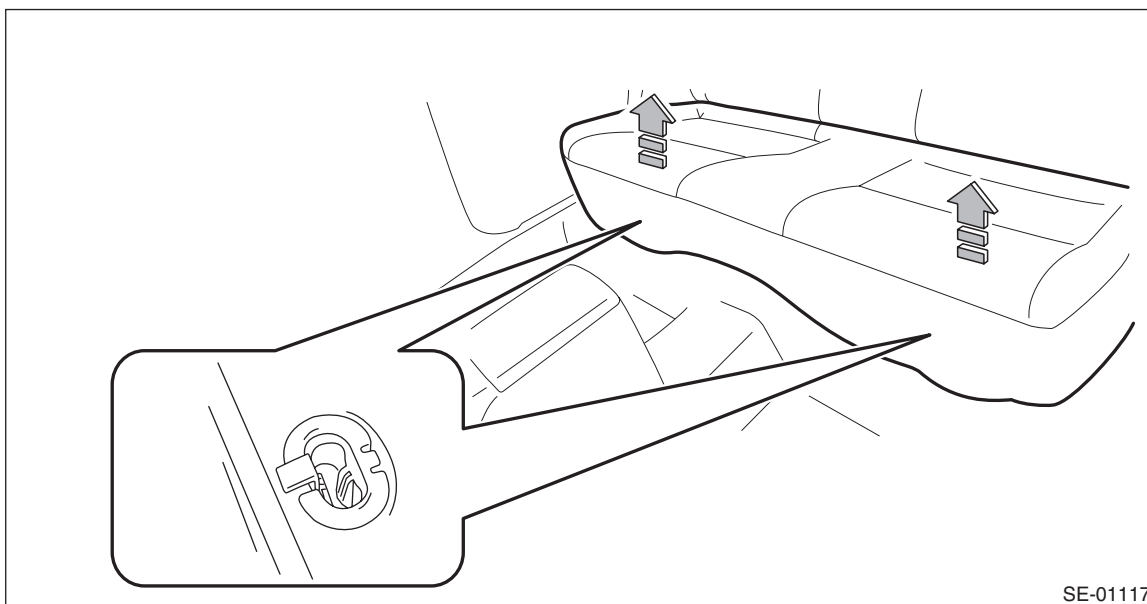
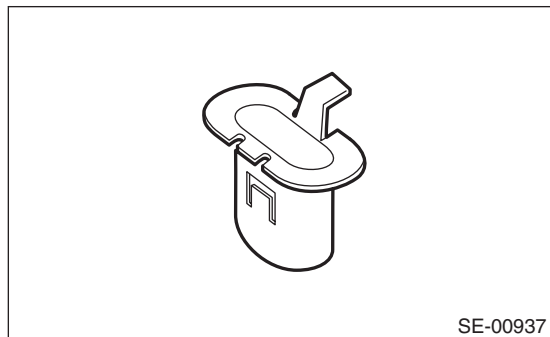
The airbag system is fitted with a backup power supply. After disconnecting the battery ground cable, the airbag may deploy if you do not wait for 60 seconds before starting the service of airbag system.

2) Remove the rear seat cushion assembly.

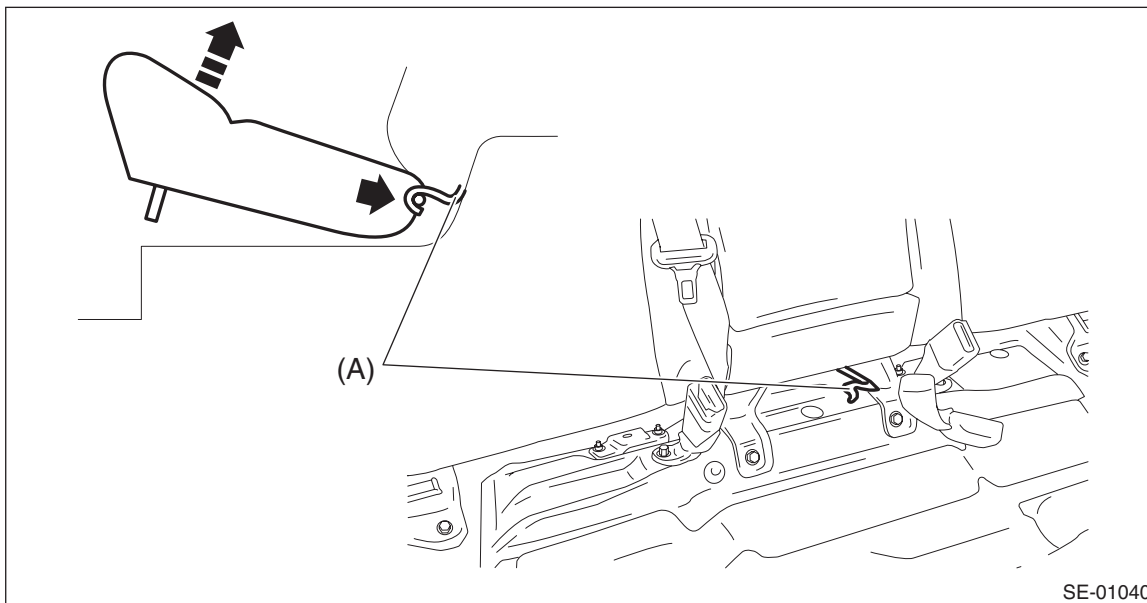
(1) Pull up the seat cushion and release the hook.

CAUTION:

If the hook is disconnected from the vehicle body, replace the hook with the new part to prevent the decline of the fixed force of the seat.



(2) Remove the hook (A) by pushing it back while lifting the front side of the seat cushion, and remove the seat cushion assembly.

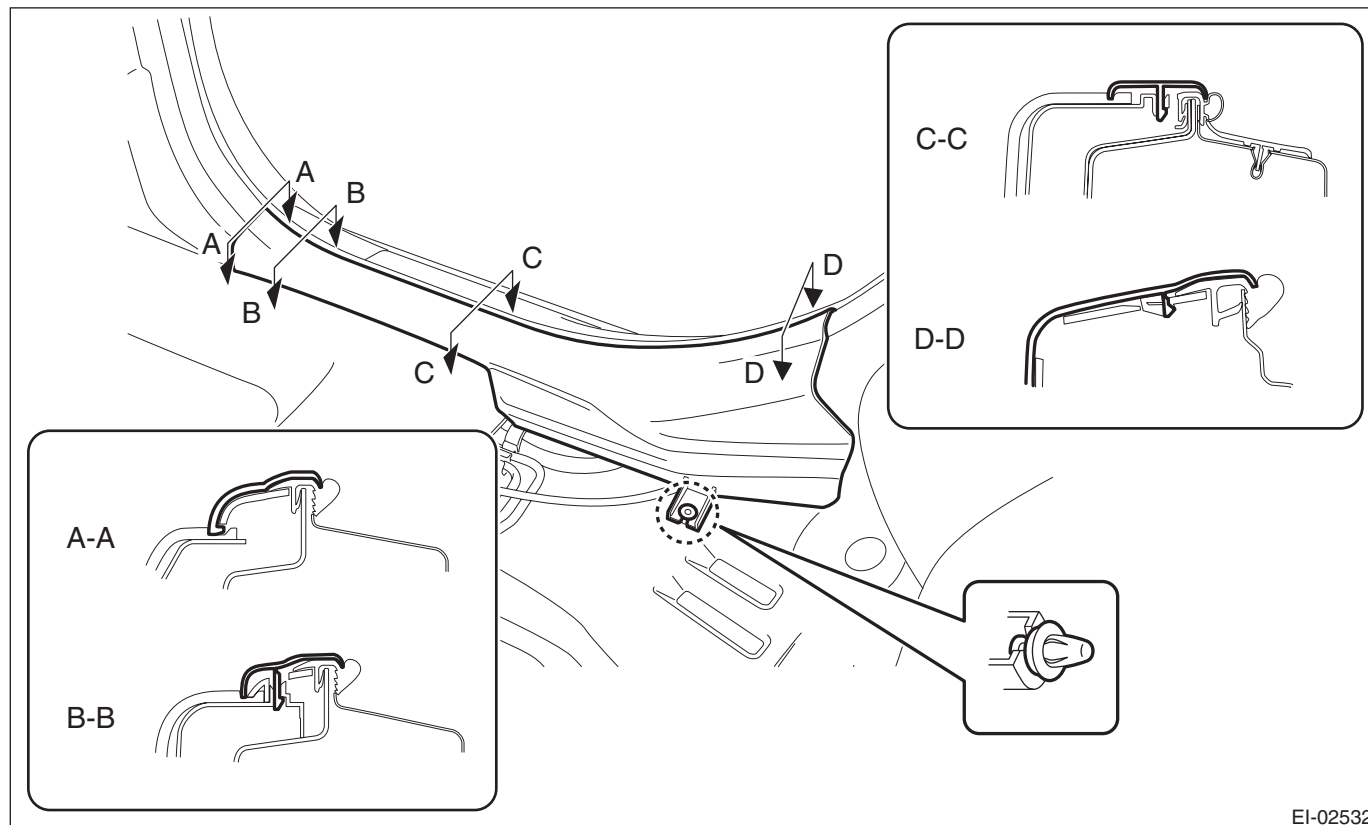


SE-01040

3) Release the clips and claws, and then remove the side sill cover - rear INN. (On the side where airbag sensor is removed)

CAUTION:

Do not pull with excessive force. Doing so may damage the claws of the side sill cover INN.



EI-02532

NOTE:

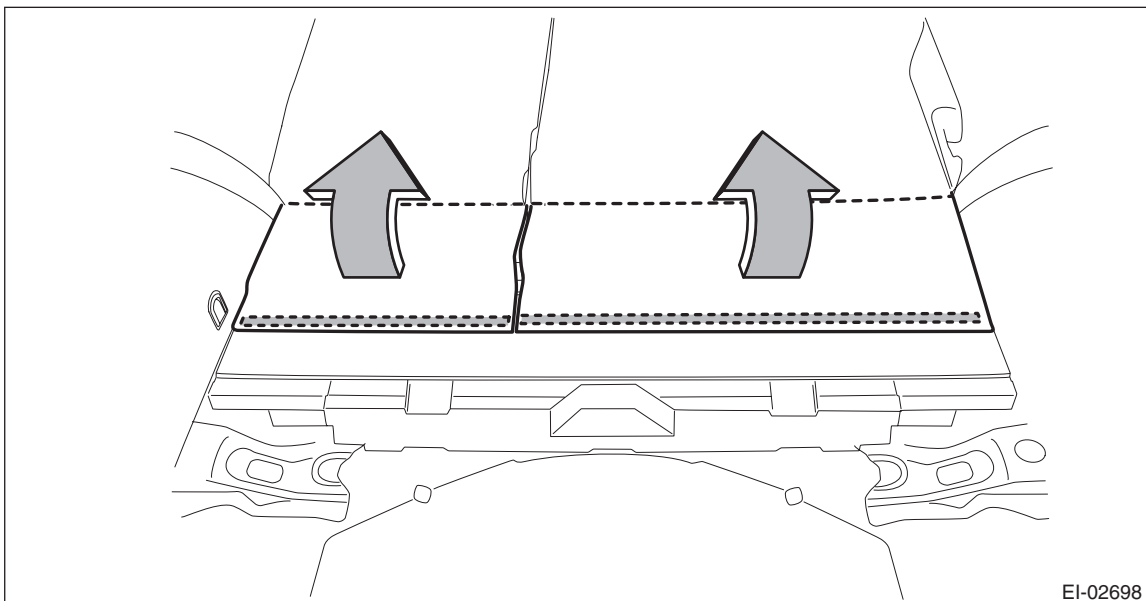
To release the claws of the side sill cover INN, the following steps are recommended.

1. Take out the weather strip from under the side sill cover INN.
2. Turn over the floor mat and release the claw (C-C and D-D) by accessing from behind the side sill cover INN.

Curtain Airbag Sensor

AIRBAG SYSTEM

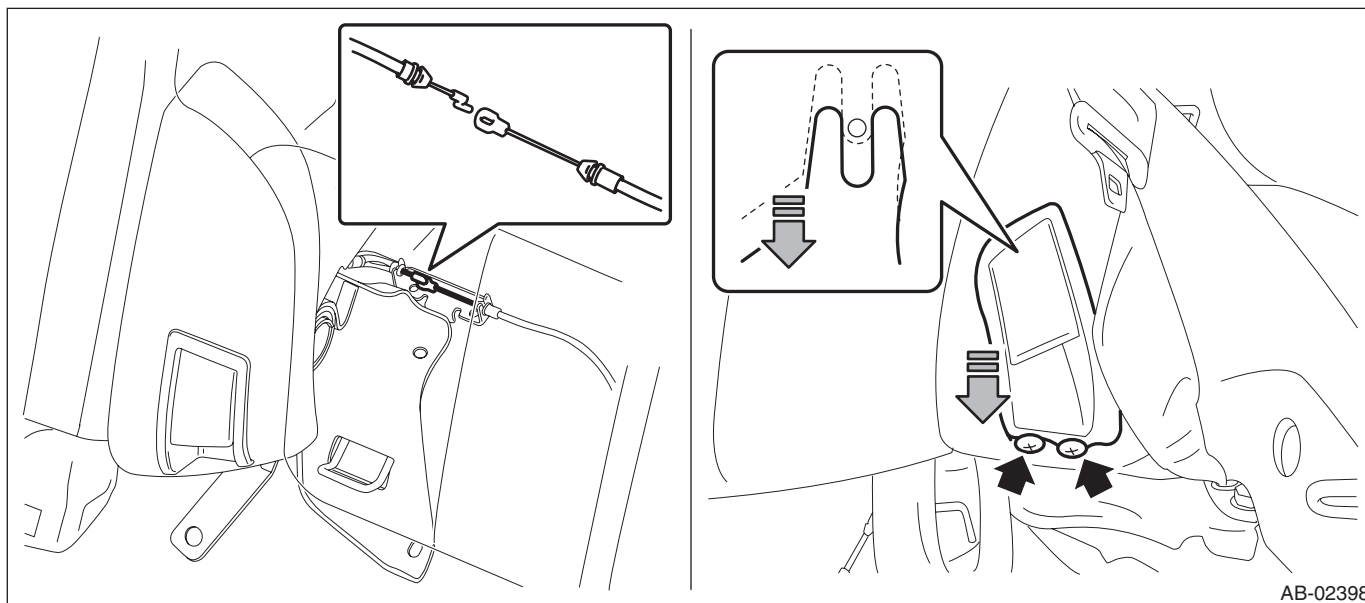
4) Tilt the backrest forward, and then turn over the backrest backside mat.



EI-02698

- 5) Remove the backrest side pad assembly. (On the side where airbag sensor is removed)
- (1) Disconnect the backrest cable and reclining lever cable.
 - (2) Remove the screws and remove the reclining lever assembly by pulling it downward.

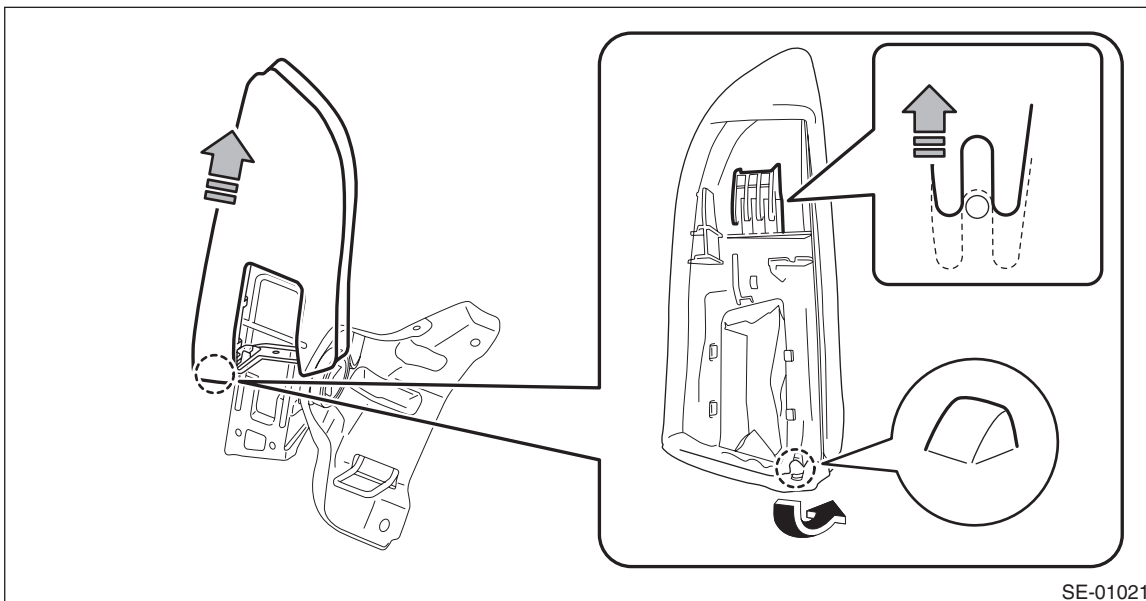
Preparation tool: Stubby screwdriver



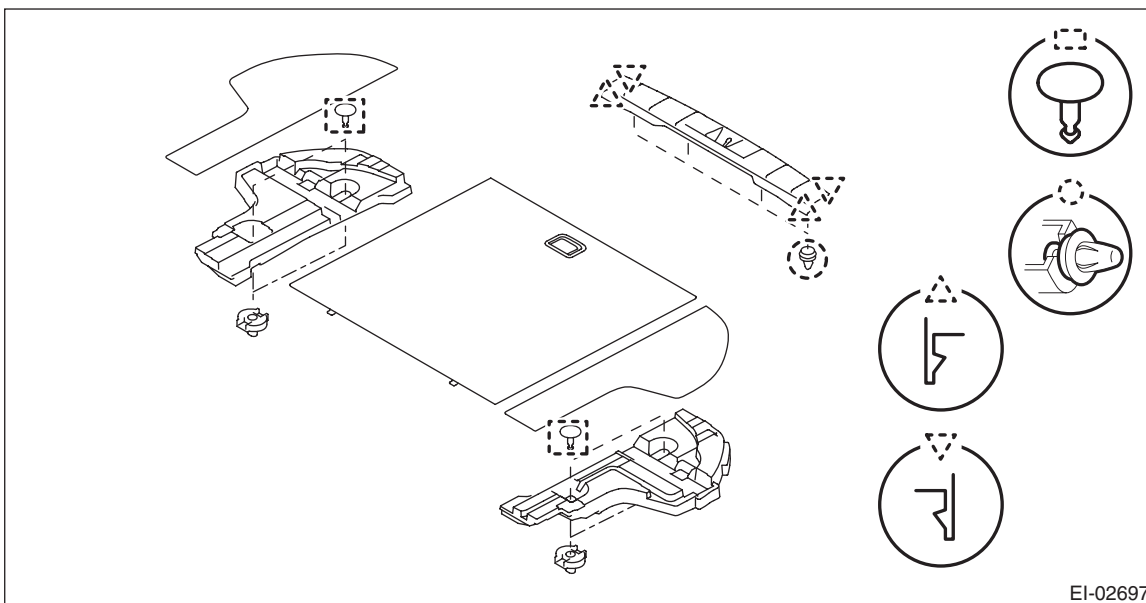
AB-02398

- (3) Turn over the bottom end of the backrest side pad in the forward direction so that the claws are released.

- (4) Remove the backrest side pad by pulling it up.



- 6) Remove the clips, and remove the luggage floor box and rear floor edge cover.

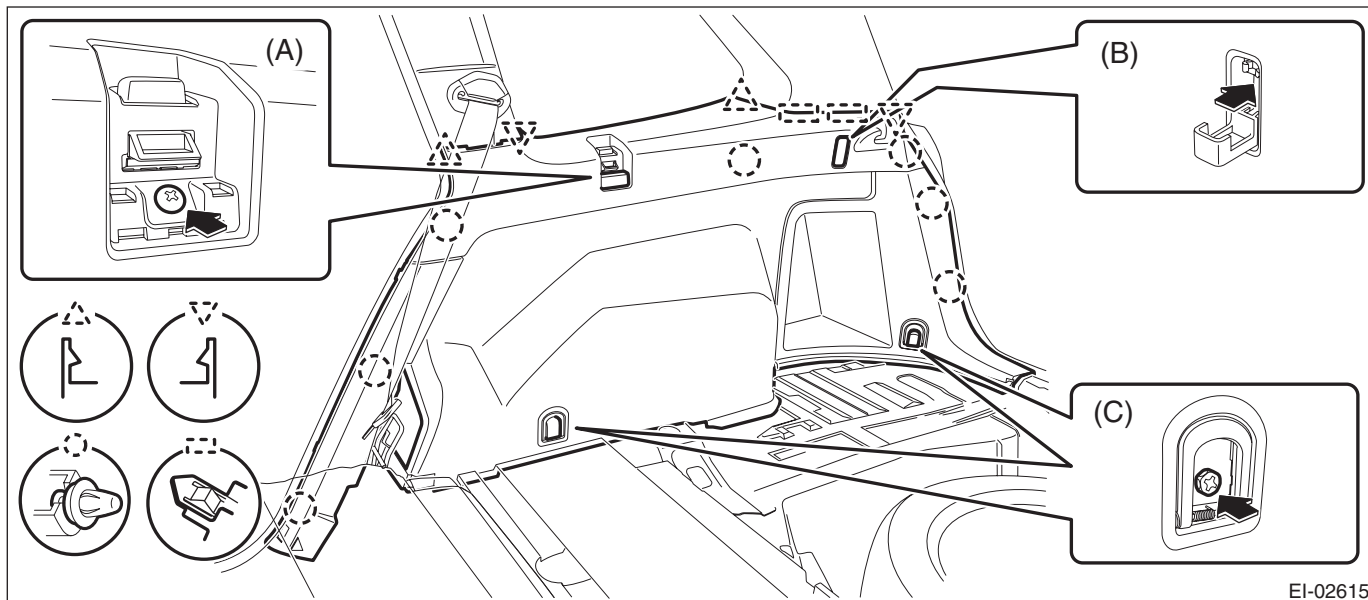


Curtain Airbag Sensor

AIRBAG SYSTEM

7) Remove the rear quarter trim LWR. (On the side where airbag sensor is removed)

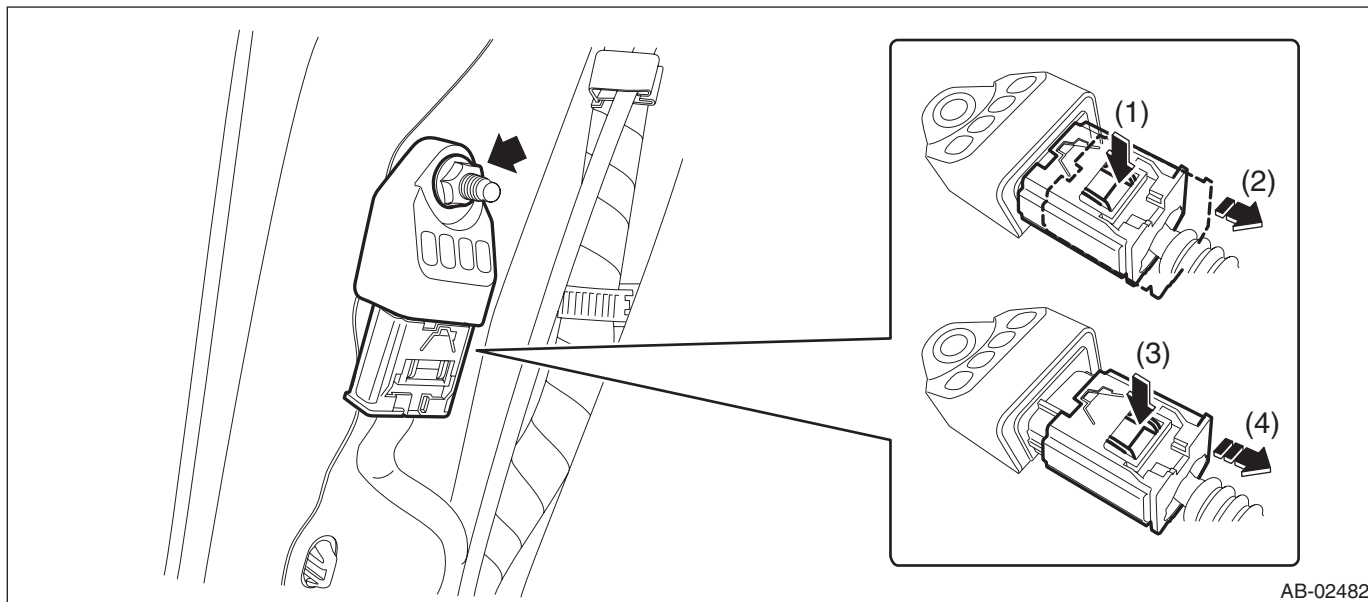
- (1) Remove the caps, screws, and bolts. (A), (C)
- (2) Take out the hook and remove the screw inside. (B)
- (3) Remove the clips, and remove the rear quarter trim LWR.



EI-02615

8) Remove the nut and then remove the curtain airbag sensor assembly.

- (1) Push the lock arm.
- (2) Holding outer part, pull it one step in the direction of arrow.
- (3) Push the lock arm again.
- (4) Holding outer part, pull it in the direction of arrow to disconnect the connector.



AB-02482

B: INSTALLATION

CAUTION:

- Do not reuse the bolt and nut.

Always use new bolts and nuts for them.

- When installing the sensor, securely insert the arrest pin on the back side of sensor into the mounting hole on the body.

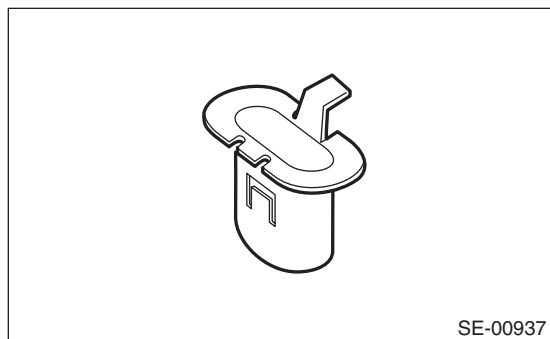
1) Before installation, inspect the following items and replace any faulty part with a new one.

- The curtain airbag sensor or connector are damaged.
- Curtain airbag is deployed.

2) Install each part in the reverse order of removal.

CAUTION:

If the hook is removed from vehicle body, replace the hook with the new part to avoid the deterioration of seat securing.



Tightening torque:

Curtain airbag sensor: 7.5 N·m (0.76 kgf-m, 5.5 ft-lb)