

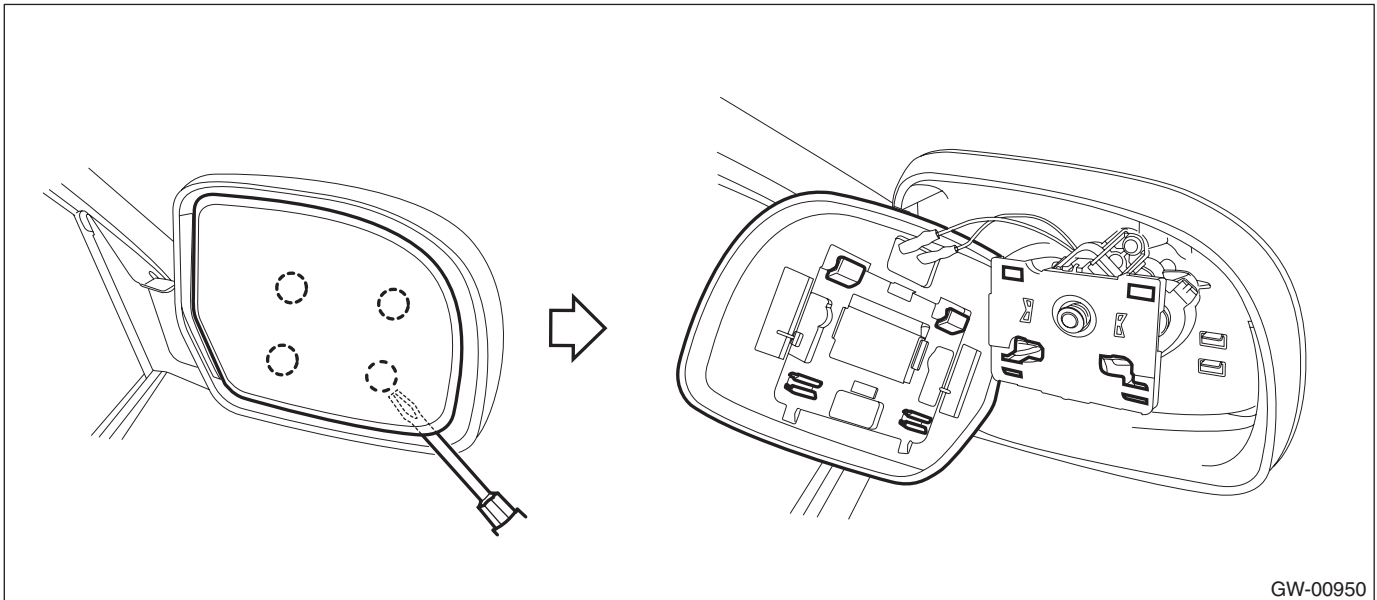
10. Outer Mirror

A: REPLACEMENT

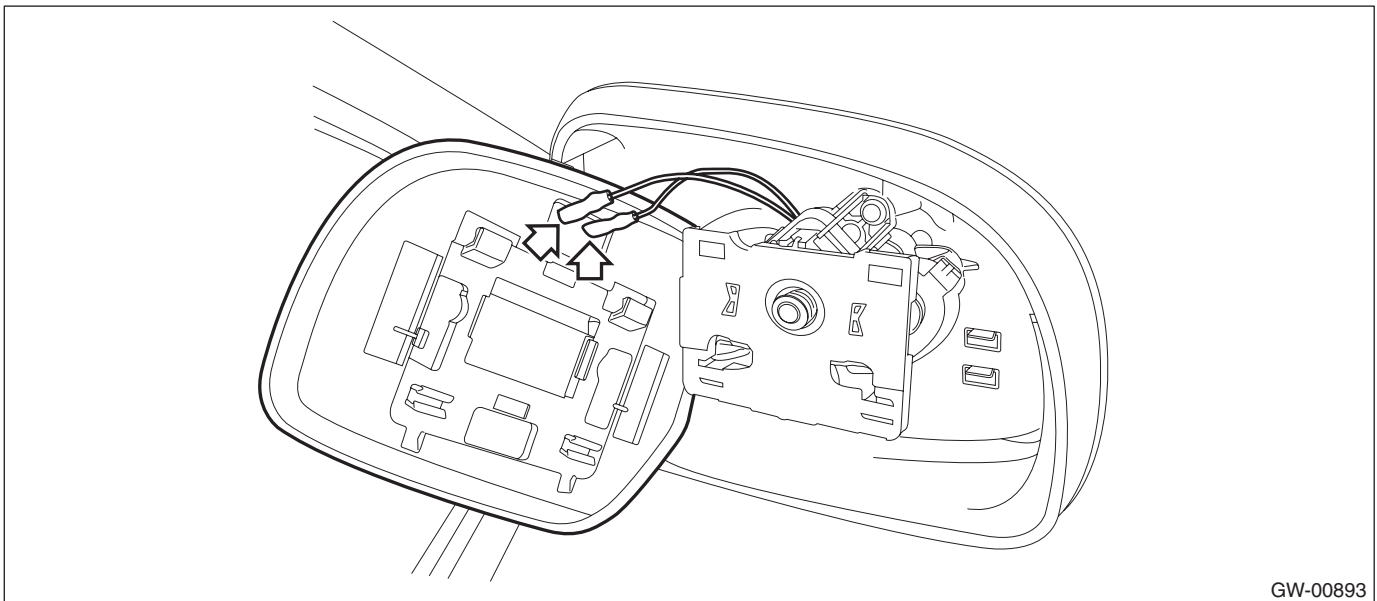
1. MODEL WITHOUT ELECTRIC RETRACTABLE MIRROR

CAUTION:

- When removing the mirror, be careful not to damage the back surface of mirror with a flat tip screwdriver.
 - When installing the mirror, insert the connector and clip securely.
- 1) Operate the remote control mirror switch to face the mirror surface upward.
 - 2) Disconnect the ground cable from battery.
 - 3) Remove the outer mirror.
 - (1) Disconnect the clips using a flat tip screwdriver.



- (2) Disconnect the mirror heater connector. (Model with mirror heater)



- 4) Install the outer mirror in the reverse order of removal.

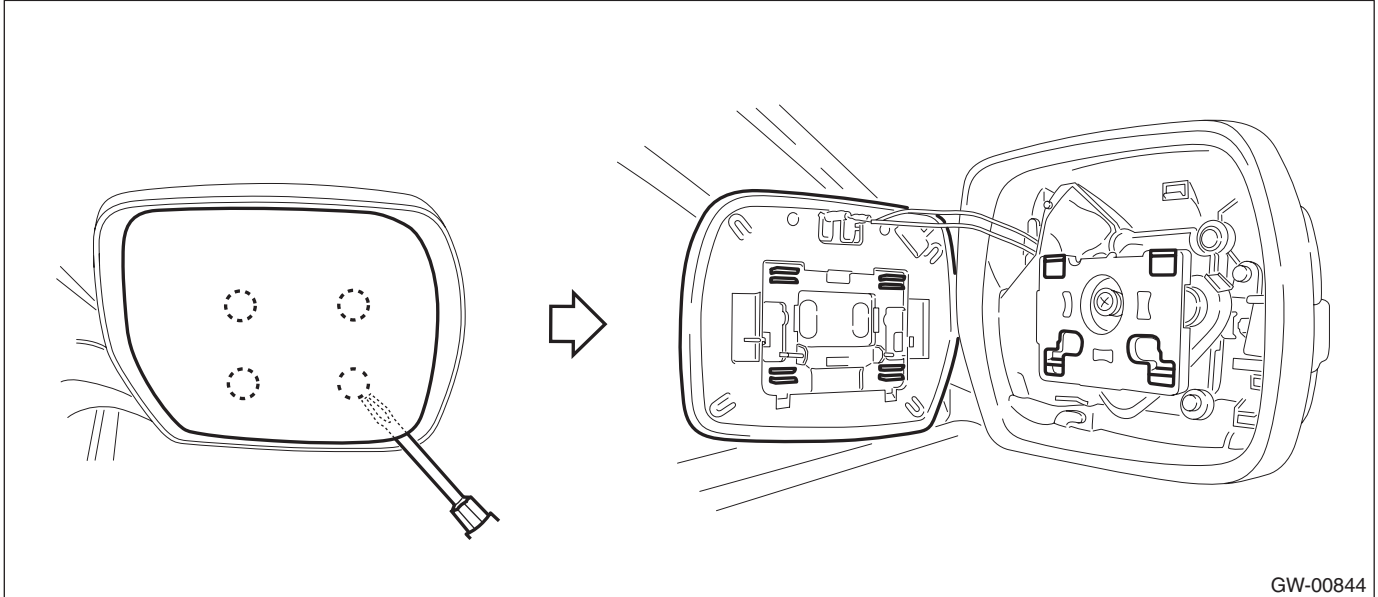
Outer Mirror

GLASS/WINDOWS/MIRRORS

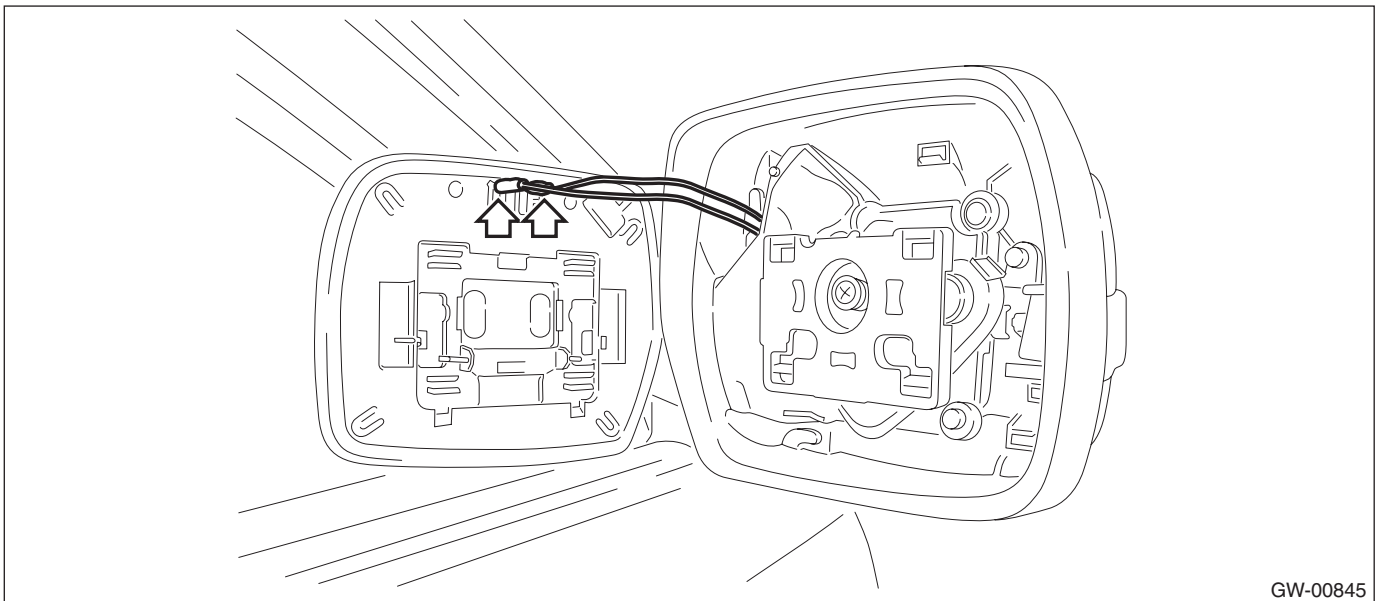
2. MODEL WITH ELECTRIC RETRACTABLE MIRROR

CAUTION:

- When removing the mirror, be careful not to damage the back surface of mirror with a flat tip screwdriver.
 - When installing the mirror, insert the connector and clip securely.
- 1) Operate the remote control mirror switch to face the mirror surface upward.
 - 2) Disconnect the ground cable from battery.
 - 3) Remove the outer mirror.
 - (1) Disconnect the clips using a flat tip screwdriver.



(2) Disconnect the mirror heater connector. (Model with mirror heater)



4) Install the outer mirror in the reverse order of removal.