

### 20. Rearview Mirror (RCD Model)

#### A: REMOVAL

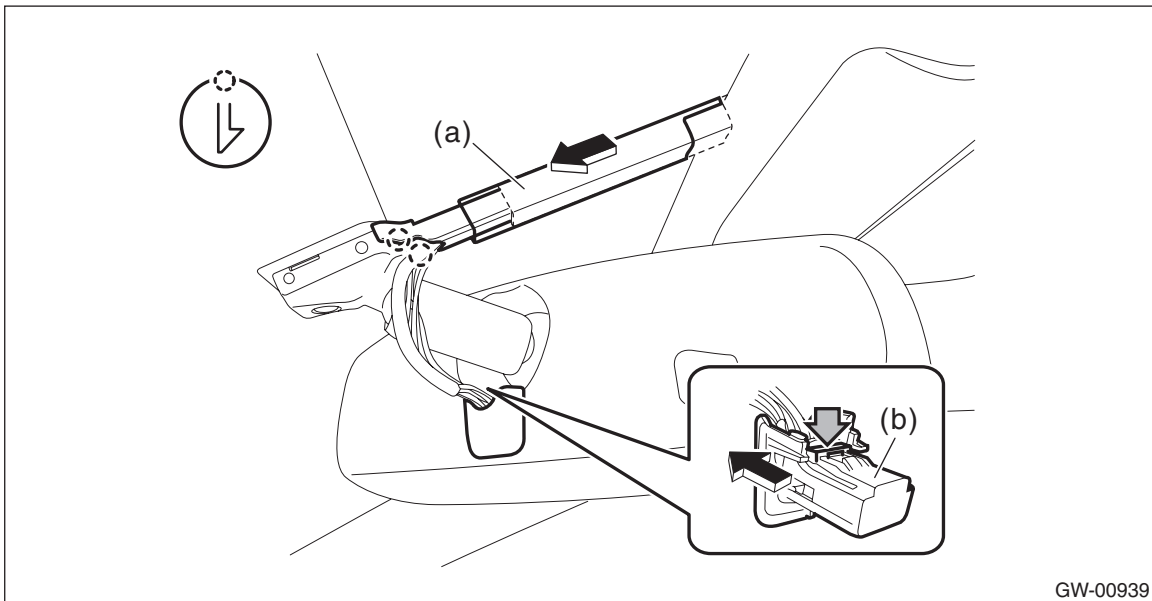
**CAUTION:**

**Be careful not to damage the mirror surface and windshield glass.**

- 1) Disconnect the ground cable from battery.
- 2) Remove the rearview mirror.
  - (1) Slide the upper section of the cover, and release the claws in the lower section, then remove the harness cover (a).
  - (2) Disconnect the rearview mirror connector (b).

**CAUTION:**

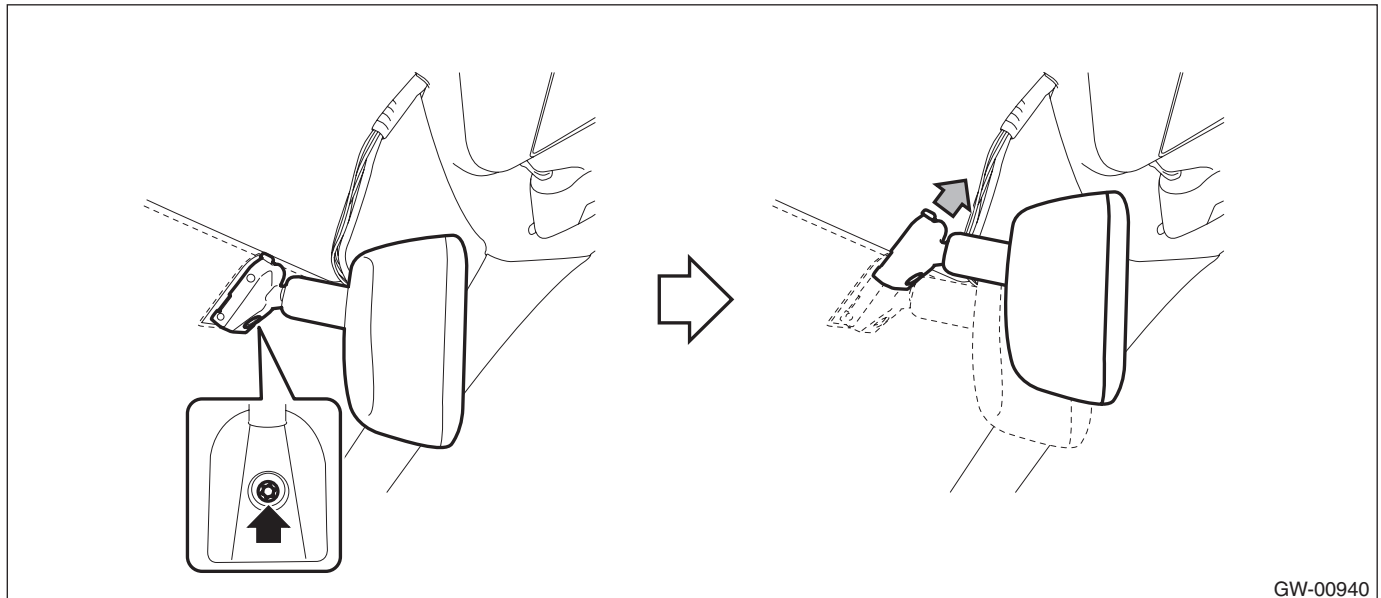
- Be careful not to pull the harness.
- In order to prevent damaging the mirror and harness, remove the connector with the cap as a unit. When removing the cap, disconnect the connector first.



GW-00939

- (3) Remove the TORX<sup>®</sup> bolt, and then slide the rear view mirror to remove.

**Preparation tool: TORX<sup>®</sup> T20**



GW-00940

- 3) When the mirror mount is damaged, use something like piano wire or a spatula to remove.

## B: INSTALLATION

### CAUTION:

When tightening the mounting TORX® bolt, be sure to observe the specified torque. Otherwise, the mount may be damaged in over-torque conditions.

- 1) Install each part in the reverse order of removal.
- 2) Perform calibration and zone setting of the rearview mirror (RCD). <Ref. to GW-59, ADJUSTMENT, Rearview Mirror (RCD Model).>

### Tightening torque:

Refer to “COMPONENT” of “General Description”. <Ref. to GW-6, MIRROR, COMPONENT, General Description.>

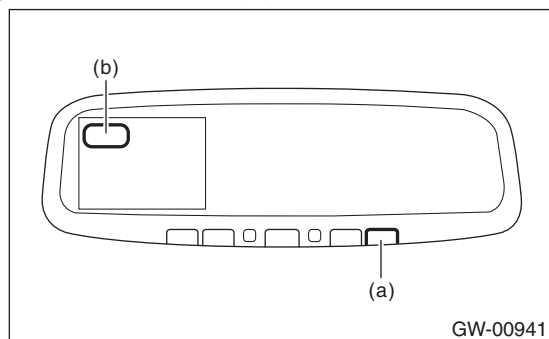
## C: ADJUSTMENT

### CAUTION:

- When the rearview mirror (RCD) is removed or replaced, perform calibration and zone setting by following the procedures below.
- The zone setting of the vehicle is set to zone “8” at factory setting.

### 1. CALIBRATION

- 1) Before performing calibration, check the following items.
  - There is a sufficient distance from a big metal object or a building.
  - Vehicle is parked on a level surface.
  - The switch of unnecessary accessories (A/C system, audio system and lighting system) is turned to “OFF”.
  - All doors are closed.
- 2) Start the engine.
- 3) Hold down the multi-function button (a) for six to nine seconds. Once calibration mode starts, “C” is displayed on the screen (b).



- 4) Drive the vehicle in a circle until the display of “C” on the screen goes off. (Approx. two or three times)
- 5) Display the compass to check the operation.

### CAUTION:

The mirror may not be able to perform the reading correctly. Therefore, when the compass operates only to the specific direction, repeat steps 3) to 5).

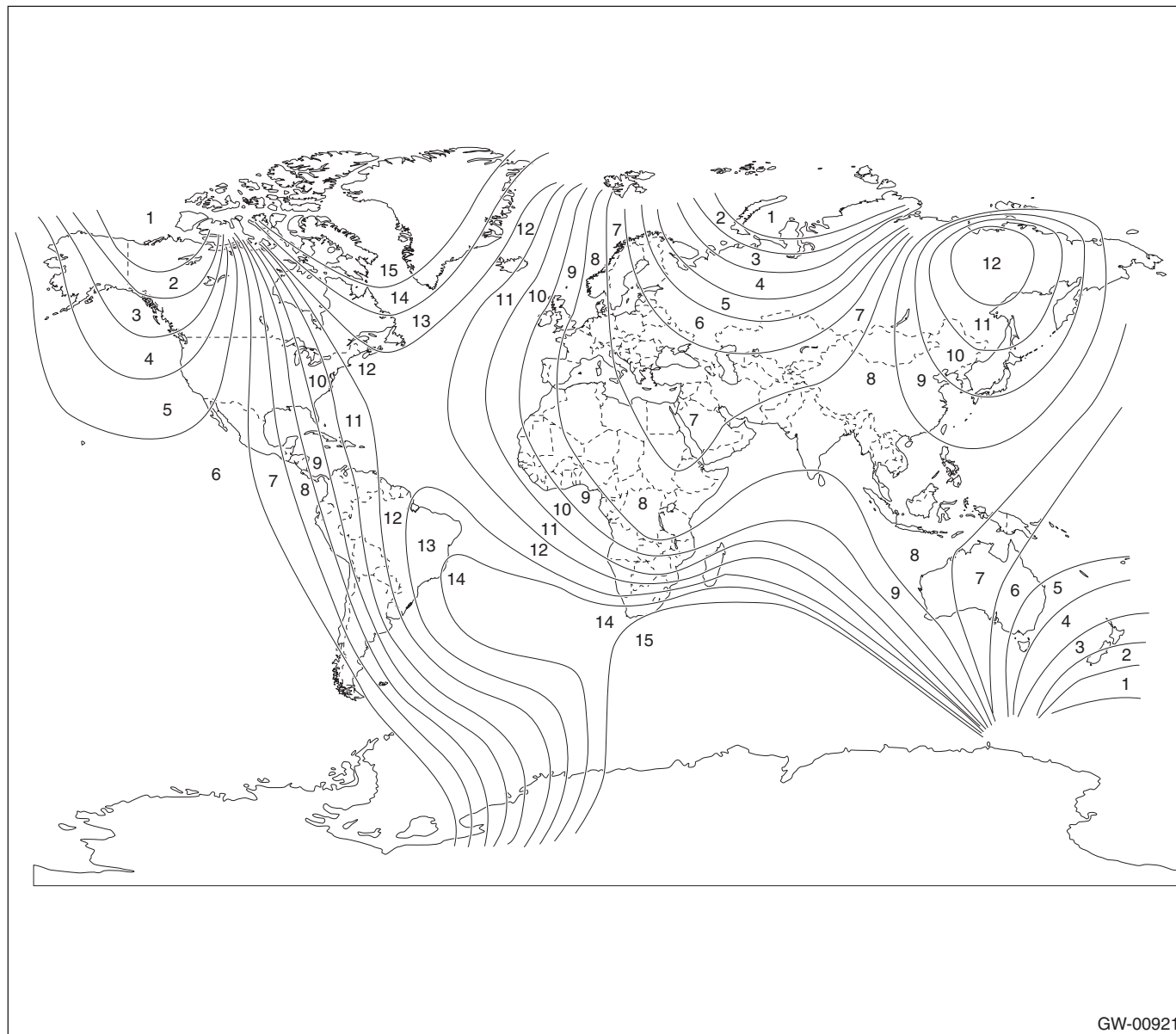
# Rearview Mirror (RCD Model)

## GLASS/WINDOWS/MIRRORS

### 2. ZONE SETTING

1) Refer to the compass zone map to check the zone number of area you use the vehicle.

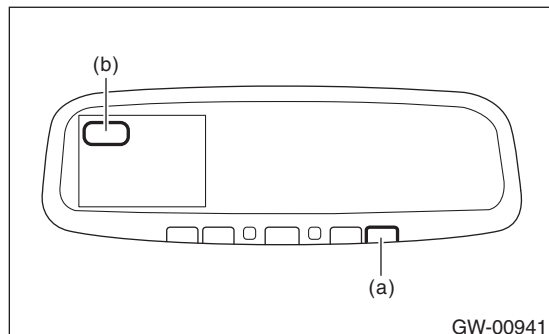
#### Compass zone map



GW-00921

2) Turn the ignition switch to ON.

3) Hold down the multi-function button (a) for three to six seconds. Once zone setting mode starts, the zone number that is already set is displayed on the screen (b).



GW-00941

4) Push the multi-function button repeatedly until the zone number you want to set is displayed.

**NOTE:**

If you leave the multi-function button for three seconds, the zone setting mode is completed.