

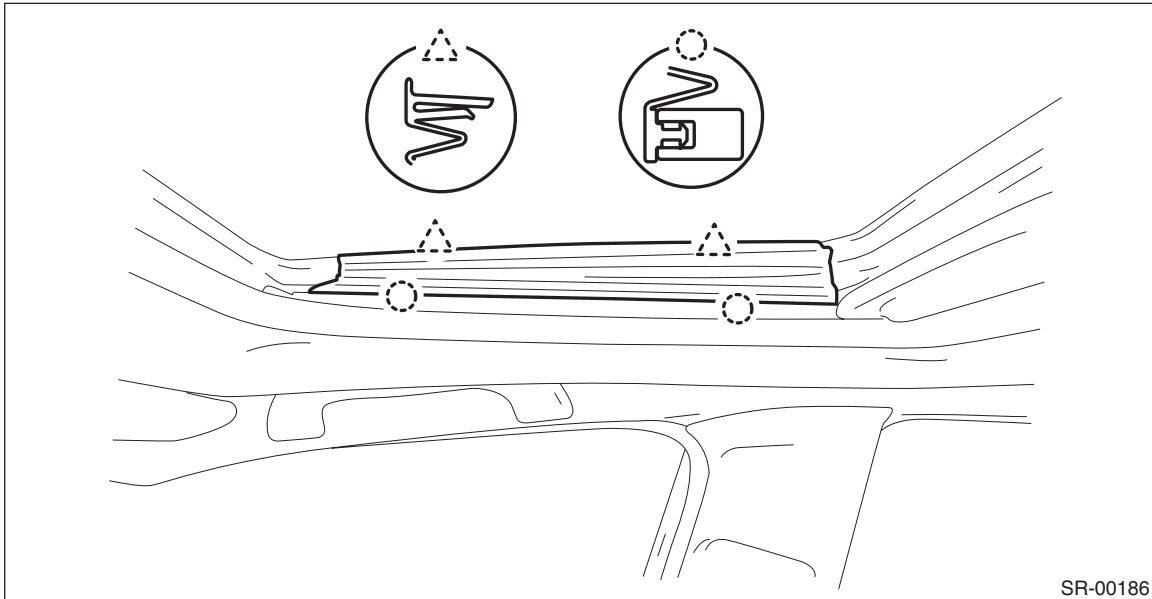
## Glass Lid

SUNROOF/T-TOP/CONVERTIBLE TOP (SUNROOF)

### 4. Glass Lid

#### A: REMOVAL

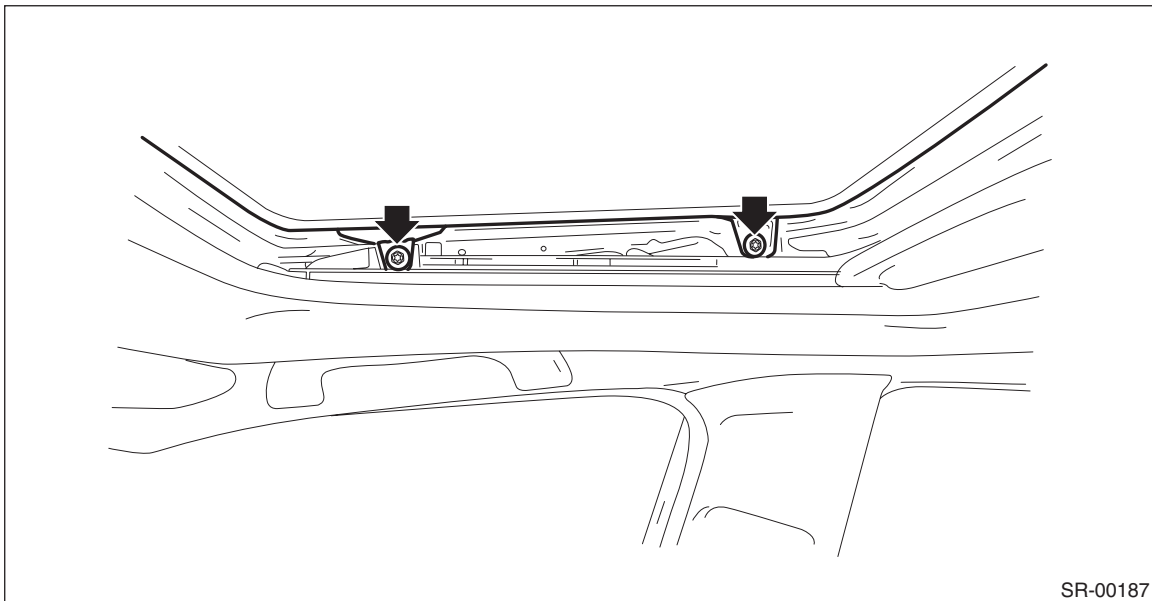
- 1) Completely close the glass lid, and then open the sunshade.
- 2) Disconnect the claws and then remove the lid cover.



- 3) Remove the bolts, then remove the glass lid.

#### CAUTION:

Be careful not to damage the glass lid.



#### B: INSTALLATION

Install each part in the reverse order of removal.

#### Tightening torque:

Refer to "COMPONENT" of "General Description". <Ref. to SR-2, COMPONENT, General Description.>

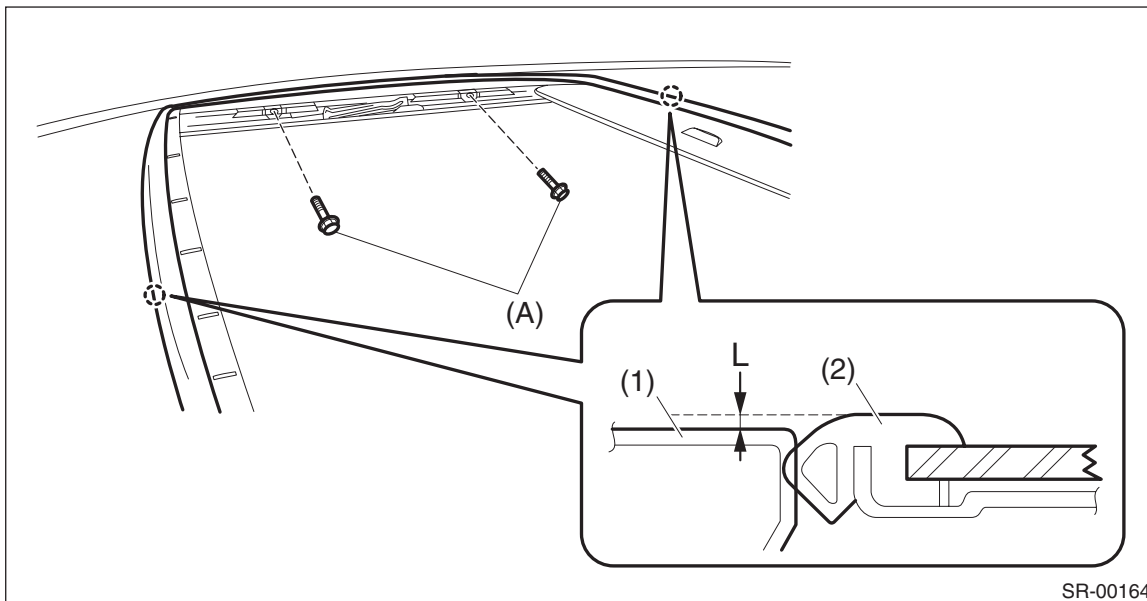
### C: ADJUSTMENT

Adjust the height of the glass lid and roof panel.

- Loosen the glass lid mounting bolts (A), and then adjust the height with moving the lid side.

**Difference in height between weather strip and roof panel L:**

**$0 \pm 1.0 \text{ mm}$  ( $0 \pm 0.04 \text{ in}$ )**



SR-00164

(1) Roof panel

(2) Weather strip

### D: FORCED DRIVE

If the glass lid does not operate or the sunroof motor is not supplied with power, move the glass lid using the hexagon wrench.

**Width across flat 5 mm (0.20 in)**

#### CAUTION:

**After a forced operation, make sure to perform an initialize operation. <Ref. to SR-5, INITIALIZE OPERATION, OPERATION, Sunroof Control System.>**

- Remove the spot map light. <Ref. to LI-61, REMOVAL, Spot Map Light.>
- Insert the hexagon wrench securely until it touches the motor shaft edge.

## Glass Lid

### SUNROOF/T-TOP/CONVERTIBLE TOP (SUNROOF)

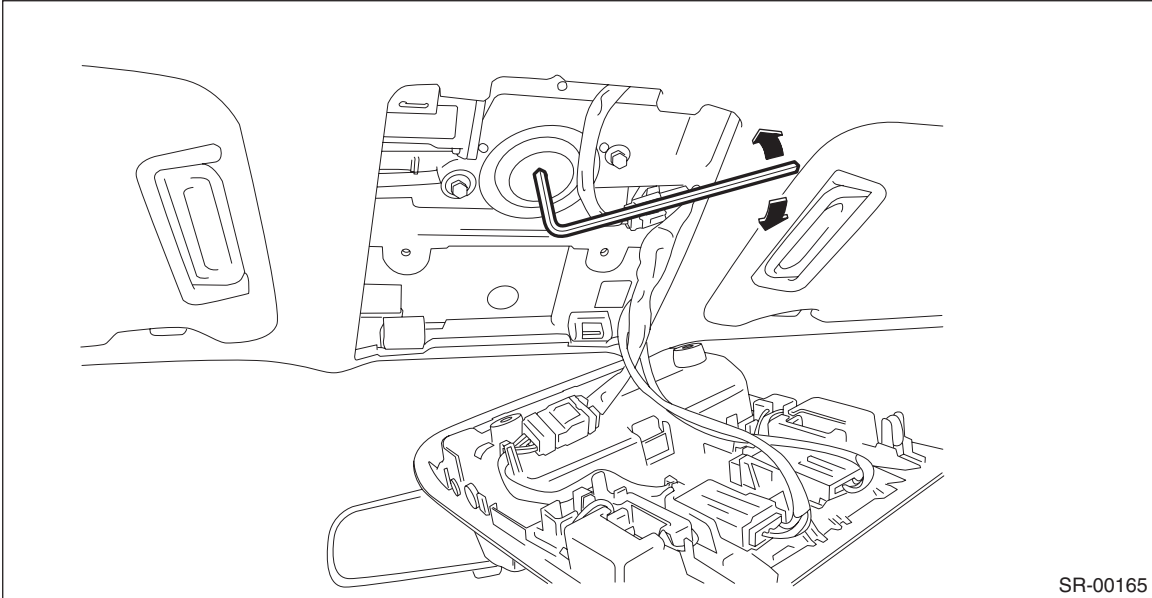
---

3) Turn the hexagon wrench, and move the glass lid.

- Turning right, the glass lid open.
- Turning left, the glass lid close.

#### **CAUTION:**

**Be careful not to damage the adjacent parts with the rod end when moving the glass lid with the hexagon wrench.**



SR-00165