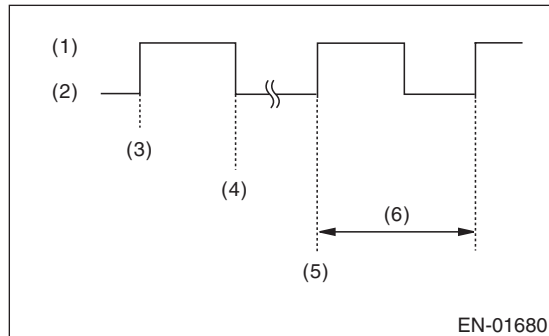


Malfunction Indicator Light

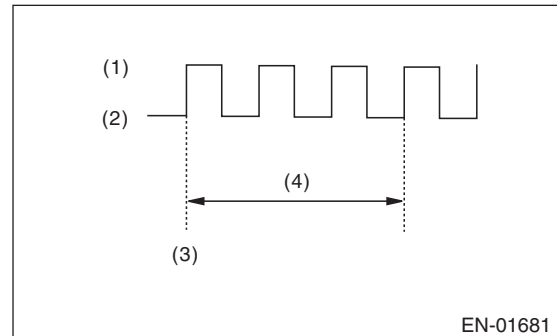
ENGINE (DIAGNOSTICS)

3) If the diagnostic system detects a misfire which could damage the catalyst, the malfunction indicator light will blink at a cycle of 1 Hz.



- (1) ON
- (2) OFF
- (3) Ignition switch ON
- (4) Engine start
- (5) Misfire start
- (6) 1 second

(3) Malfunction indicator light blinks at a cycle of 3 Hz after diagnosis if there is no trouble. Malfunction indicator light illuminates if faulty.

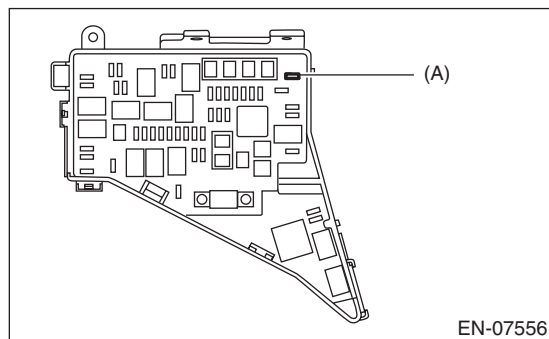


- (1) ON
- (2) OFF
- (3) Ignition switch ON
- (4) 1 second

4) Install the delivery (test) mode fuse (A) with ignition switch to OFF.

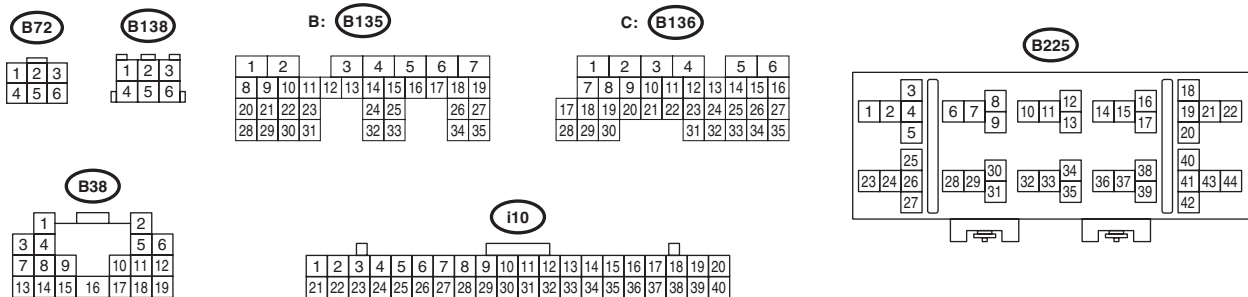
CAUTION:

Do not use any fuses that are installed on the vehicle.



- (1) When the ignition switch is turned to ON (engine OFF), the malfunction indicator light illuminates.
- (2) After the engine starts, malfunction indicator light blinks in a cycle of 0.5 Hz. (During diagnosis)

- Engine electrical system, 3.6 L model (without push button start) <Ref. to WI-150, 3.6 L MODEL (WITHOUT PUSH BUTTON START), WIRING DIAGRAM, Engine Electrical System.>
- Engine electrical system, 3.6 L model (with push button start) <Ref. to WI-166, 3.6 L MODEL (WITH PUSH BUTTON START), WIRING DIAGRAM, Engine Electrical System.>



Step	Check	Yes	No
1	CHECK VEHICLE SPECIFICATION.	Is the vehicle except for C6 model?	Go to step 2. Go to step 3.

Malfunction Indicator Light

ENGINE (DIAGNOSTICS)

Step	Check	Yes	No
2 CHECK DTC.	Is DTC of LAN system displayed? <Ref. to LAN(diag)-9, OPERATION, Read Diagnostic Trouble Code (DTC).>	Check the appropriate DTC using the "List of Diagnostic Trouble Code (DTC)". <Ref. to LAN(diag)-59, List of Diagnostic Trouble Code (DTC).>	Replace the meter case assembly of combination meter. <Ref. to IDI-26, Combination Meter.>
3 CHECK OUTPUT SIGNAL OF ECM. 1) Turn the ignition switch to OFF. 2) Disconnect the connector from ECM. 3) Turn the ignition switch to ON. 4) Measure the voltage between ECM connector and chassis ground. Connector & terminal (B135) No. 33 (+) — Chassis ground (-):	Is the voltage 10 V or more?	Go to step 7.	Go to step 4.
4 CHECK HARNESS BETWEEN COMBINATION METER AND IGNITION SWITCH CONNECTOR. 1) Turn the ignition switch to OFF. 2) Remove the combination meter. <Ref. to IDI-26, Combination Meter.> 3) Turn the ignition switch to ON. 4) Measure the voltage between combination meter connector and chassis ground. Connector & terminal (i10) No. 19 (+) — Chassis ground (-):	Is the voltage 10 V or more?	Go to step 5.	Check the following item and repair if necessary. NOTE: • Blown out of fuse • Open circuit or short circuit to ground in harness of power supply circuit
5 CHECK HARNESS BETWEEN ECM AND COMBINATION METER CONNECTOR. Measure the resistance of harness between ECM and combination meter connector. Connector & terminal (B135) No. 33 — (i10) No. 6:	Is the resistance less than 1 Ω ?	Go to step 6.	Repair the harness and connector. NOTE: In this case, repair the following item: • Open circuit in harness between ECM and combination meter connector • Poor contact of coupling connector
6 CHECK FOR POOR CONTACT. Check for poor contact of combination meter connector.	Is there poor contact of combination meter connector?	Repair the poor contact of combination meter connector.	Replace the meter case assembly of combination meter. <Ref. to IDI-26, Combination Meter.>
7 CHECK ECM CONNECTOR. Check the connection of ECM connector.	Is the ECM connector correctly connected?	Go to step 8.	Connect the ECM connector correctly.
8 CHECK FOR POOR CONTACT. Check for poor connection by shaking or pulling ECM connector and harness.	Does the malfunction indicator light illuminate?	Repair the poor contact of ECM connector.	Replace the ECM. <Ref. to FU(H6DO)-54, Engine Control Module (ECM).>

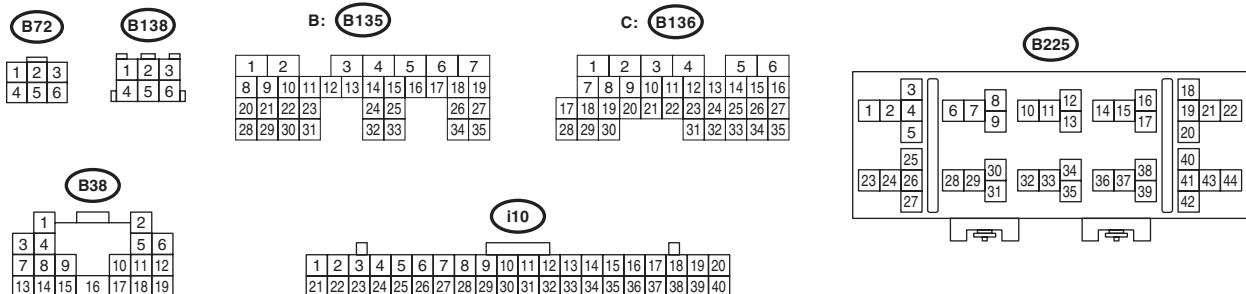
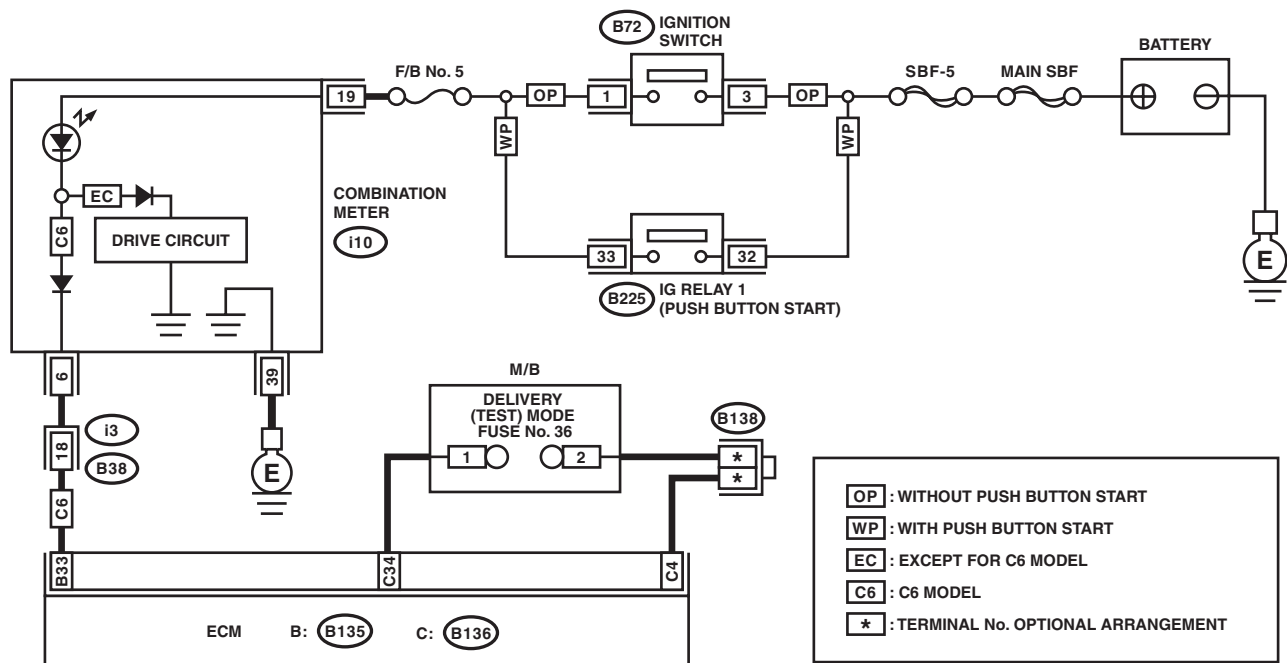
D: MALFUNCTION INDICATOR LIGHT DOES NOT GO OFF

TROUBLE SYMPTOM:

Although malfunction indicator light comes on when the engine runs, DTC is not shown on the Subaru Select Monitor or general scan tool display.

WIRING DIAGRAM:

- Engine electrical system, 3.6 L model (without push button start) <Ref. to WI-150, 3.6 L MODEL (WITHOUT PUSH BUTTON START), WIRING DIAGRAM, Engine Electrical System.>
- Engine electrical system, 3.6 L model (with push button start) <Ref. to WI-166, 3.6 L MODEL (WITH PUSH BUTTON START), WIRING DIAGRAM, Engine Electrical System.>



EN-09880

Malfunction Indicator Light

ENGINE (DIAGNOSTICS)

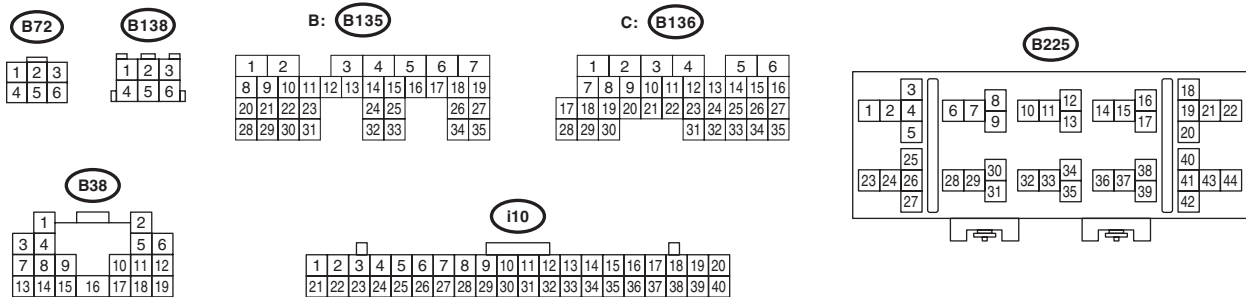
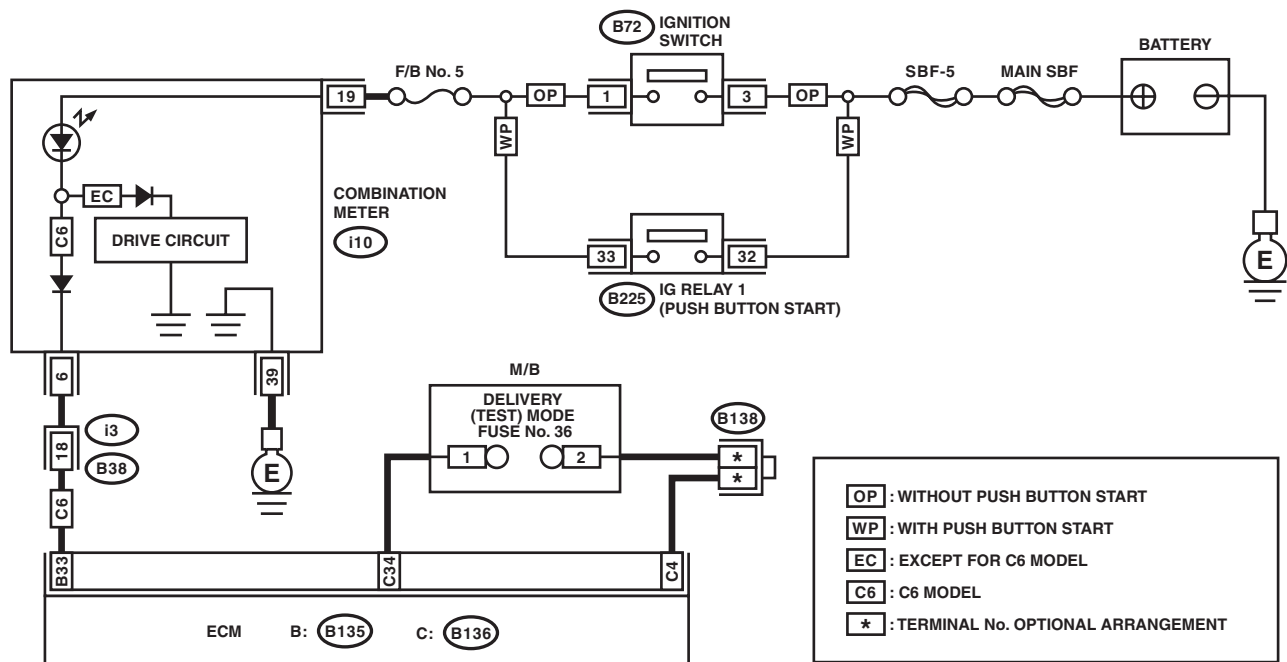
Step		Check	Yes	No
1	CHECK DTC.	Is DTC of engine or LAN system displayed? <Ref. to EN(H6DO)(diag)-47, OPERATION, Read Diagnostic Trouble Code (DTC).>	Check the appropriate DTC using the "List of Diagnostic Trouble Code (DTC)". <Ref. to EN(H6DO)(diag)-97, List of Diagnostic Trouble Code (DTC).> <Ref. to LAN(diag)-59, List of Diagnostic Trouble Code (DTC).>	Go to step 2.
2	CHECK VEHICLE SPECIFICATION.	Is the vehicle except for C6 model?	Go to step 3.	Go to step 4.
3	CHECK COMBINATION METER. Perform the self-diagnosis for combination meter system. <Ref. to IDI-8, SELF-DIAGNOSIS DISPLAY MODE, OPERATION, Combination Meter System.>	Does the malfunction indicator light illuminate and go off normally?	Replace the ECM. <Ref. to FU(H6DO)-54, Engine Control Module (ECM).>	Replace the meter case assembly of combination meter. <Ref. to IDI-26, Combination Meter.>
4	CHECK HARNESS BETWEEN ECM AND COMBINATION METER CONNECTOR. 1) Turn the ignition switch to OFF. 2) Disconnect the connector from ECM. 3) Turn the ignition switch to ON.	Does the malfunction indicator light illuminate?	Go to step 5.	Replace the ECM. <Ref. to FU(H6DO)-54, Engine Control Module (ECM).>
5	CHECK HARNESS BETWEEN ECM AND COMBINATION METER CONNECTOR. 1) Turn the ignition switch to OFF. 2) Remove the combination meter. <Ref. to IDI-26, Combination Meter.> 3) Measure the resistance between ECM and chassis ground. Connector & terminal (B135) No. 33 — Chassis ground:	Is the resistance 1 MΩ or more?	Replace the meter case assembly of combination meter. <Ref. to IDI-26, Combination Meter.>	Repair the ground short circuit of harness between ECM and combination meter connector.

DIAGNOSIS:

- ## TROUBLE SYMPTOM:

WIRING DIAGRAM:

- Engine electrical system, 3.6 L model (without push button start) <Ref. to WI-150, 3.6 L MODEL (WITHOUT PUSH BUTTON START), WIRING DIAGRAM, Engine Electrical System.>
- Engine electrical system, 3.6 L model (with push button start) <Ref. to WI-166, 3.6 L MODEL (WITH PUSH BUTTON START), WIRING DIAGRAM, Engine Electrical System.>



EN(H6DO)(diag)-71

Malfunction Indicator Light

ENGINE (DIAGNOSTICS)

Step		Check	Yes	No
1	CHECK STATUS OF MALFUNCTION INDICATOR LIGHT. 1) Turn the ignition switch to OFF. 2) Check the delivery (test) mode fuse is removed. 3) Turn the ignition switch to ON. (engine OFF)	Does the malfunction indicator light illuminate?	Go to step 2.	Repair the malfunction indicator light circuit. <Ref. to EN(H6DO)(diag)-67, MALFUNCTION INDICATOR LIGHT DOES NOT COME ON, Malfunction Indicator Light.>
2	CHECK VEHICLE SPECIFICATION.	Is the vehicle except for C6 model?	Go to step 4.	Go to step 3.
3	CHECK HARNESS BETWEEN ECM AND COMBINATION METER CONNECTOR. 1) Turn the ignition switch to OFF. 2) Disconnect the connector from ECM. 3) Turn the ignition switch to ON.	Does the malfunction indicator light illuminate?	Repair the ground short circuit of harness between ECM and combination meter connector.	Go to step 4.
4	CHECK HARNESS BETWEEN ECM AND DELIVERY (TEST) MODE FUSE. 1) Turn the ignition switch to OFF. 2) Disconnect the connector from ECM. 3) Install the delivery (test) mode fuse. CAUTION: Do not use any fuses that are installed on the vehicle. 4) Measure the resistance of harness between ECM connectors. Connector & terminal (B136) No. 34 — (B136) No. 4:	Is the resistance less than 1 Ω ?	Go to step 5.	Repair the harness and connector. NOTE: In this case, repair the following item: • Open circuit of harness between ECM and delivery (test) mode fuse • Poor contact of joint connector
5	CHECK FOR POOR CONTACT. Check for poor contact of ECM connector.	Is there poor contact of ECM connector?	Repair the poor contact of ECM connector.	Replace the ECM. <Ref. to FU(H6DO)-54, Engine Control Module (ECM).>

F: MALFUNCTION INDICATOR LIGHT REMAINS BLINKING

DIAGNOSIS:

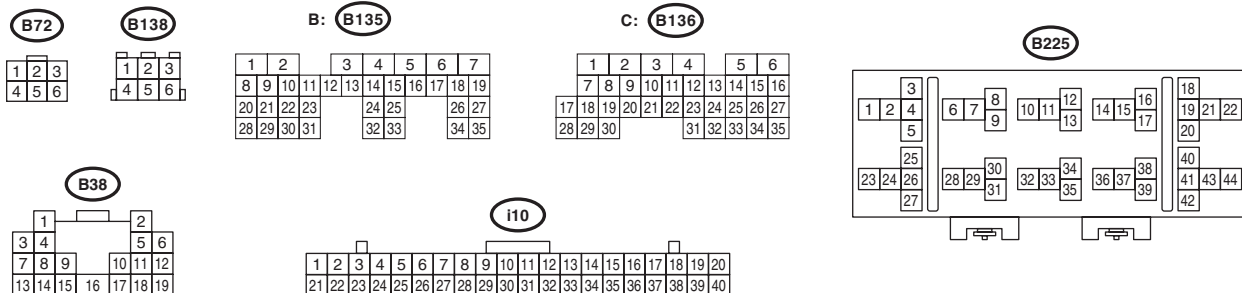
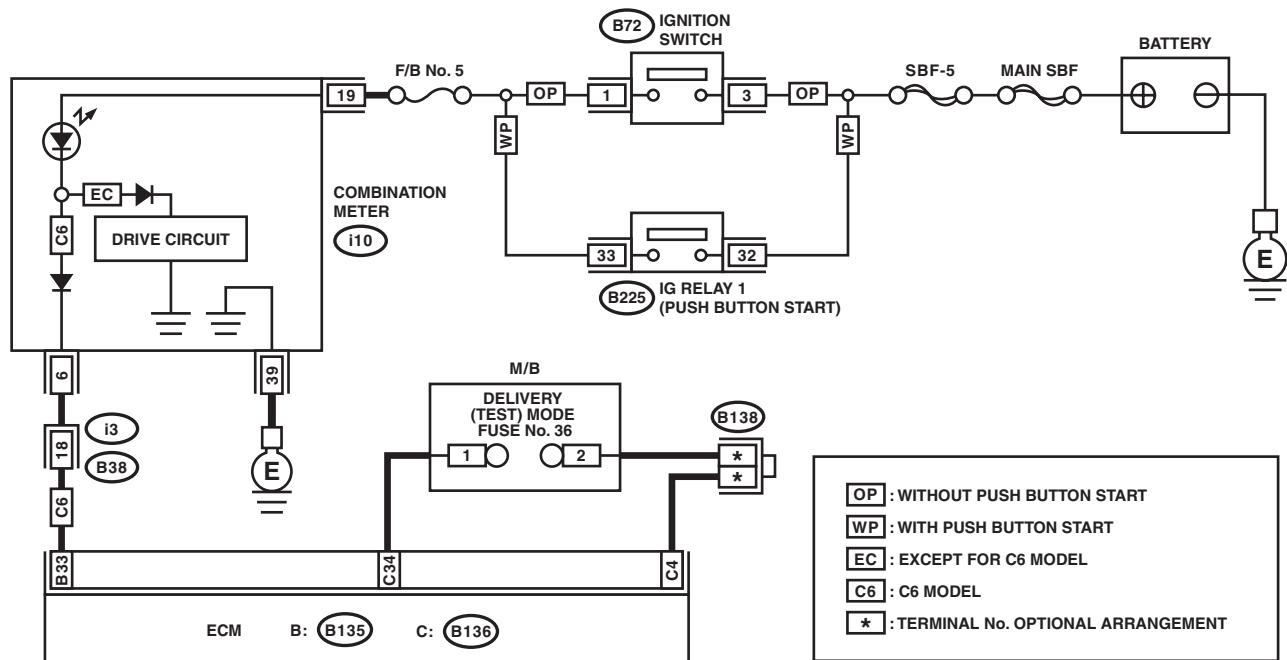
The delivery (test) mode fuse circuit is short-circuited to ground.

TROUBLE SYMPTOM:

Malfunction indicator light blinks when delivery (test) mode fuse is not connected.

WIRING DIAGRAM:

- Engine electrical system, 3.6 L model (without push button start) <Ref. to WI-150, 3.6 L MODEL (WITHOUT PUSH BUTTON START), WIRING DIAGRAM, Engine Electrical System.>
- Engine electrical system, 3.6 L model (with push button start) <Ref. to WI-166, 3.6 L MODEL (WITH PUSH BUTTON START), WIRING DIAGRAM, Engine Electrical System.>



EN-09880

Malfunction Indicator Light

ENGINE (DIAGNOSTICS)

Step		Check	Yes	No
1	CHECK DELIVERY (TEST) MODE FUSE. 1) Check the delivery (test) mode fuse is removed. 2) Turn the ignition switch to ON.	Does the malfunction indicator light blink?	Go to step 2.	System is normal. NOTE: Malfunction indicator light blinks at a cycle of 3 Hz when delivery (test) mode fuse is attached.
	CHECK HARNESS BETWEEN ECM AND DELIVERY (TEST) MODE FUSE. 1) Turn the ignition switch to OFF. 2) Disconnect the connector from ECM. 3) Measure the resistance between ECM and chassis ground. Connector & terminal (B136) No. 34 — Chassis ground:			Repair the short circuit to ground in harness between ECM and delivery (test) mode fuse.