

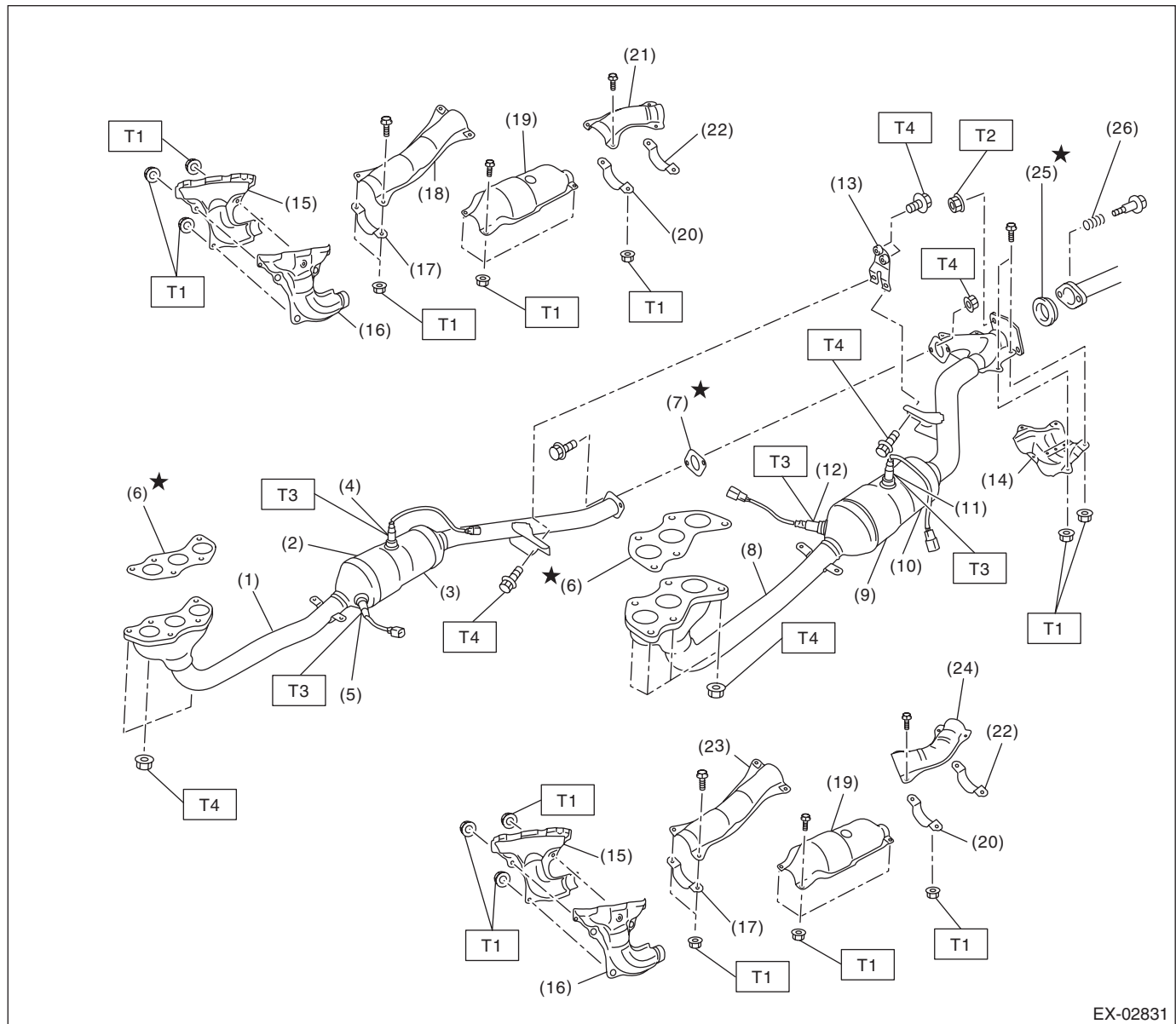
# General Description

## EXHAUST

### 1. General Description

#### A: COMPONENT

#### 1. FRONT EXHAUST PIPE



EX-02831

- (1) Front exhaust pipe (RH)
- (2) Front catalytic converter (RH)
- (3) Rear catalytic converter (RH)
- (4) Rear oxygen sensor (RH)
- (5) Front oxygen sensor (RH)
- (6) Gasket
- (7) Gasket
- (8) Front exhaust pipe (LH)
- (9) Front catalytic converter (LH)
- (10) Rear catalytic converter (LH)
- (11) Rear oxygen sensor (LH)
- (12) Front oxygen sensor (LH)

- (13) Bracket
- (14) Protector
- (15) Front exhaust pipe cover (RH)
- (16) Front exhaust pipe cover (LH)
- (17) Clamp
- (18) Front exhaust pipe upper cover (RH) (front)
- (19) Catalytic converter upper cover
- (20) Clamp
- (21) Front exhaust pipe upper cover (RH) (rear)
- (22) Clamp

- (23) Front exhaust pipe upper cover (LH) (front)
- (24) Front exhaust pipe upper cover (LH) (rear)
- (25) Gasket
- (26) Spring

#### **Tightening torque: N·m (kgf·m, ft·lb)**

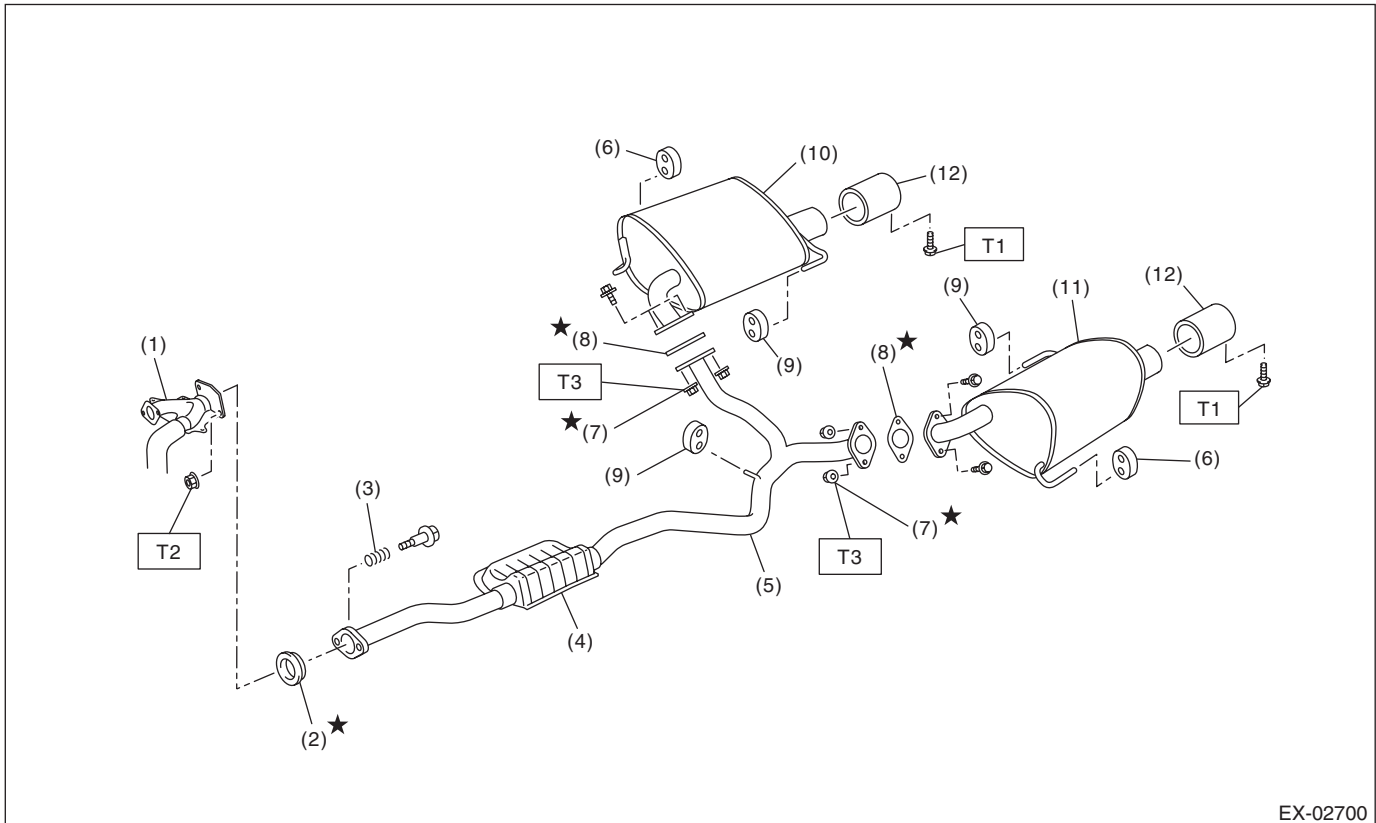
**T1: 13 (1.3, 9.6)**

**T2: 18 (1.8, 13.3)**

**T3: 21 (2.1, 15.5)**

**T4: 30 (3.1, 22.1)**

## 2. REAR EXHAUST PIPE AND MUFFLER



EX-02700

- |                                      |   |
|--------------------------------------|---|
| (1) Front exhaust pipe (LH)          | (7) Self-locking nut                    |
| (2) Gasket                           | (8) Gasket                              |
| (3) Spring                           | (9) Cushion rubber (without protrusion) |
| (4) Chamber                          | (10) Muffler (RH)                       |
| (5) Rear exhaust pipe                | (11) Muffler (LH)                       |
| (6) Cushion rubber (with protrusion) | (12) Muffler cutter                     |

### **Tightening torque: N·m (kgf·m, ft·lb)**

**T1: 7.5 (0.8, 5.5)**
**T2: 18 (1.8, 13.3)**
**T3: 48 (4.9, 35.4)**

## B: CAUTION

- Prior to starting work, pay special attention to the following:
  1. Always wear work clothes, a safety cap, protective shoes. Additionally, wear a helmet, protective goggles, etc. if necessary.
  2. Protect the vehicle using a seat cover, fender cover, etc.
  3. Prepare the service tools, clean cloth, containers to catch grease and oil, etc.
- Vehicle components are extremely hot immediately after driving. Be wary of receiving burns from heated parts.
- When performing a repair, identify the cause of trouble and avoid unnecessary removal, disassembly and replacement.
- Before disconnecting connectors of sensors or units, be sure to disconnect the ground cable from battery.
- Always use the jack-up point when the shop jacks or rigid racks are used to support the vehicle.
- Remove contamination including dirt and corrosion before removal, installation, disassembly or assembly.
- Keep the removed parts in order and protect them from dust and dirt.
- All removed parts, if to be reused, should be reinstalled in the original positions with attention to the correct directions, etc.
- Bolts, nuts and washers should be replaced with new parts as required.
- Be sure to tighten the fasteners including bolts and nuts to the specified torque.
- If any fat adheres to the exhaust pipe, wipe it off. Otherwise a fire may happen.