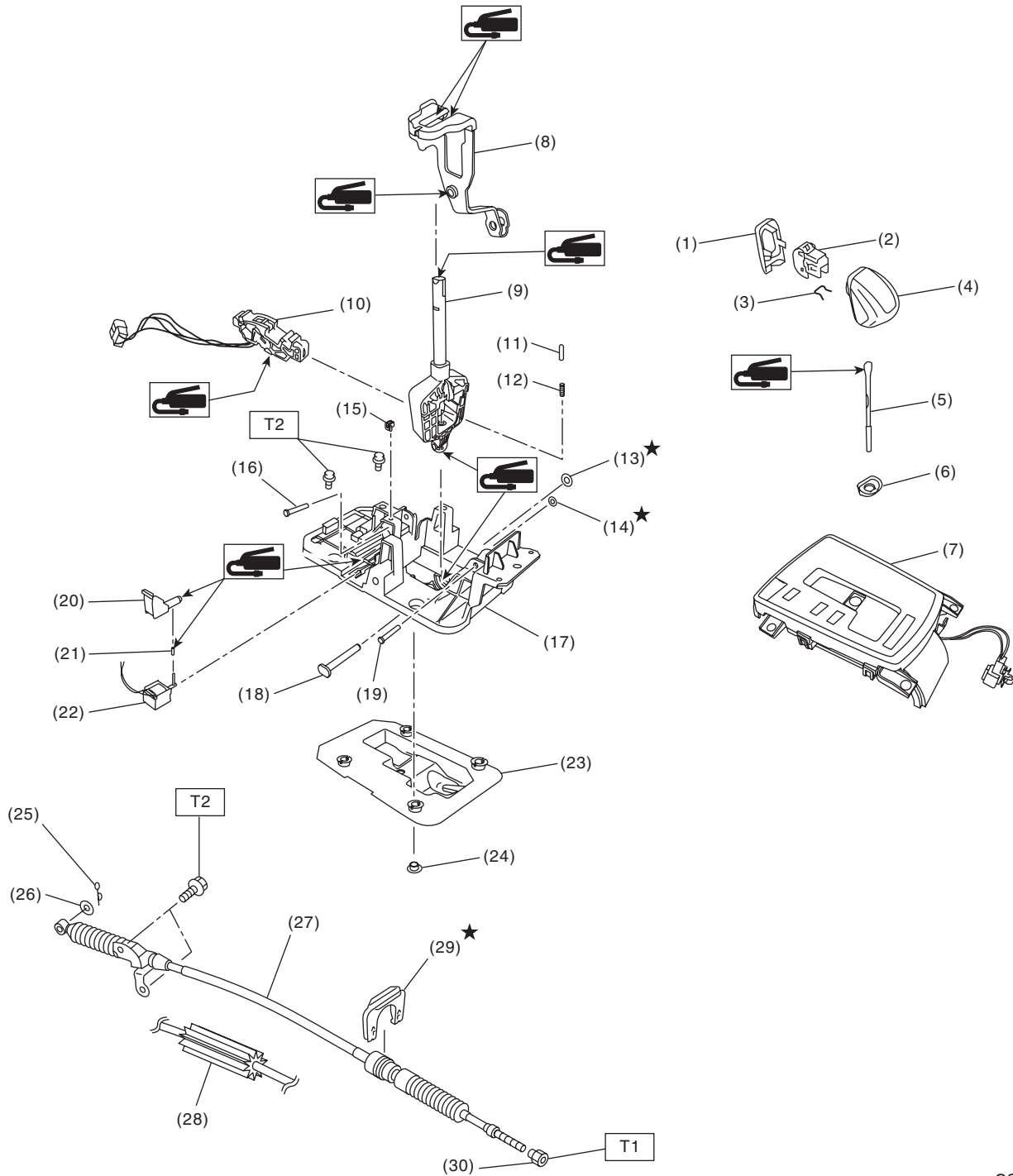


## 1. General Description

### A: COMPONENT

#### 1. AT SELECT LEVER



CS-01244

# General Description

## CONTROL SYSTEMS

(1) Cover grip AT	(13) Clamp push nut	(25) Snap pin
(2) Button ASSY-AT	(14) Clamp push nut	(26) Washer
(3) Clamp grip pin	(15) Clamp pin	(27) Select cable (AT model)
(4) Grip ASSY sub	(16) Spacer pin guide	(28) Select cable (CVT model)
(5) Rod COMPL	(17) Plate COMPL	(29) Clamp
(6) Cover grip AT	(18) Shaft control	(30) Nut
(7) Indicator ASSY	(19) Spacer pin guide	
(8) Arm ASSY	(20) Rod shift lock	
(9) Selector lever COMPL	(21) Cushion solenoid	
(10) Plate guide	(22) Solenoid unit	
(11) Rod detent	(23) Gasket	
(12) Detent spring	(24) Spacer plate	

---

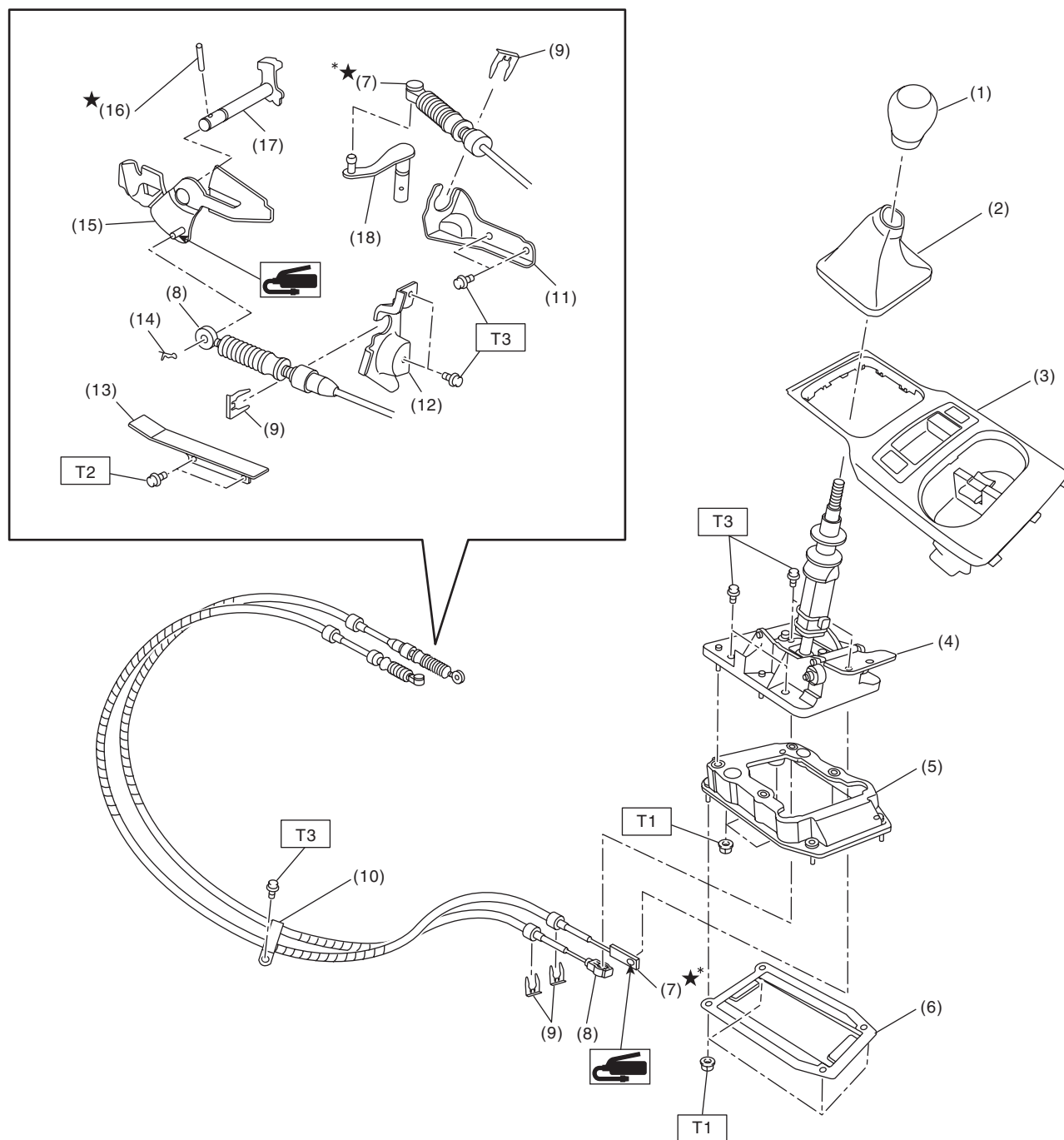
**Tightening torque: N·m (kgf-m, ft-lb)**

**T1: 7.5 (0.8, 5.5)**

**T2: 18 (1.8, 13.3)**

---

## 2. 6MT GEAR SHIFT LEVER



CS-01601

# General Description

CONTROL SYSTEMS

(1) Shift knob	(9) Clamp	(17) Shifter arm No. 2
(2) Shift boot	(10) Clamp cable	(18) Selector lever
(3) Console front cover ASSY	(11) Select bracket	
(4) Gear shift lever ASSY	(12) Shift bracket	
(5) Cover cable ASSY	(13) Dust cover	
(6) Plate cable ASSY	(14) Snap pin	
(7) MT gear select cable (identification tape color: green)	(15) Shift lever COMPL	
(8) MT gear shift cable (identification tape color: yellow)	(16) Spring pin	

---

**Tightening torque: N·m (kgf-m, ft-lb)**

**T1: 7.5 (0.8, 5.5)**

**T2: 15 (1.5, 11.1)**

**T3: 18 (1.8, 13.3)**

---

\*: Always use new MT gear select cable if the cable is removed from select lever COMPL of transmission side.

## B: CAUTION

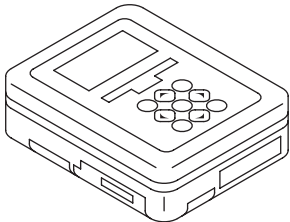
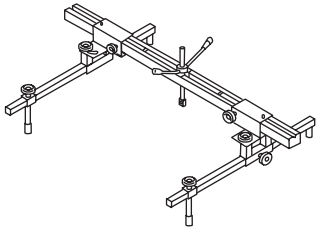
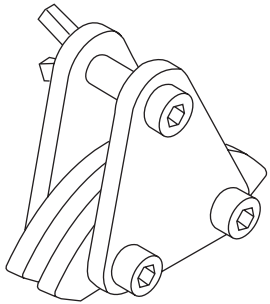
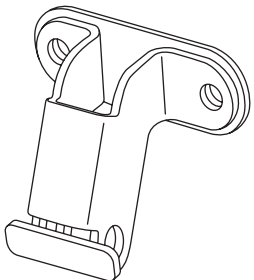
- Wear appropriate work clothing, including a cap, protective goggles and protective shoes when performing any work.
- Remove contamination including dirt and corrosion before removal, installation or disassembly.
- Keep the disassembled parts in order and protect them from dust and dirt.
- Before removal, installation or disassembly, be sure to clarify the failure. Avoid unnecessary removal, installation, disassembly and replacement.
- Use SUBARU genuine fluid, grease or equivalent. Do not mix fluid and grease of different grades or manufacturers.
- Be sure to tighten fasteners including bolts and nuts to the specified torque.
- Place shop jacks or rigid racks at the specified points.
- Apply grease onto sliding or revolving surfaces before installation.
- Before installing the O-ring or snap ring, apply a sufficient amount of fluid to avoid damage and deformation.
- Before securing a part in a vise, place cushioning material such as wood blocks, aluminum plate or cloth between the part and the vise.
- Before disconnecting electrical connectors, be sure to disconnect the negative terminal from battery.

# General Description

## CONTROL SYSTEMS

### C: PREPARATION TOOL

#### 1. SPECIAL TOOL

ILLUSTRATION	TOOL NUMBER	DESCRIPTION	REMARKS
 <p>ST1B022XU0</p>	1B022XU0	SUBARU SELECT MONITOR III KIT	Used for troubleshooting the electrical system.
 <p>ST99099AJ000</p>	99099AJ000	ENGINE HANGER	<ul style="list-style-type: none"> <li>• Used for holding and balancing the engine unit when removing and installing the MT gear select cable.</li> <li>• Used together with CHAIN BALANCER (99099AJ010).</li> </ul>
 <p>ST99099AJ010</p>	99099AJ010	CHAIN BALANCER	<ul style="list-style-type: none"> <li>• Used for holding and balancing the engine unit when removing and installing the MT gear select cable.</li> <li>• Used together with ENGINE HANGER (99099AJ000).</li> </ul>
 <p>ST41099AJ130</p>	41099AJ130	SPECIAL TOOL FB	Used for holding and balancing the engine unit when removing and installing the MT gear select cable.

## 2. GENERAL TOOL

TOOL NAME	REMARKS
Chain sling	<p>Used for holding and balancing the engine unit when removing and installing the MT gear select cable.</p> <ul style="list-style-type: none"> <li>• Length: 0.8 — 1 m (2.6 — 3.3 ft)</li> <li>• Load capacity: 1.2 t (2646 lb) or more</li> <li>• Diameter: 6 mm (0.24 in) or 6.3 mm (0.25 in)</li> <li>• Chain external width: 23.5 mm (0.93 in) or less</li> <li>• Chain internal width: 8.5 mm (0.33 in) or more</li> </ul>
Screw shackle	<p>Used for holding and balancing the engine unit when removing and installing the MT gear select cable.</p> <ul style="list-style-type: none"> <li>• Load capacity: 250 kg (551 lb) or more</li> <li>• Use two pieces.</li> </ul>
Circuit tester	Used for measuring resistance and voltage.