

General Description

PARKING BRAKE

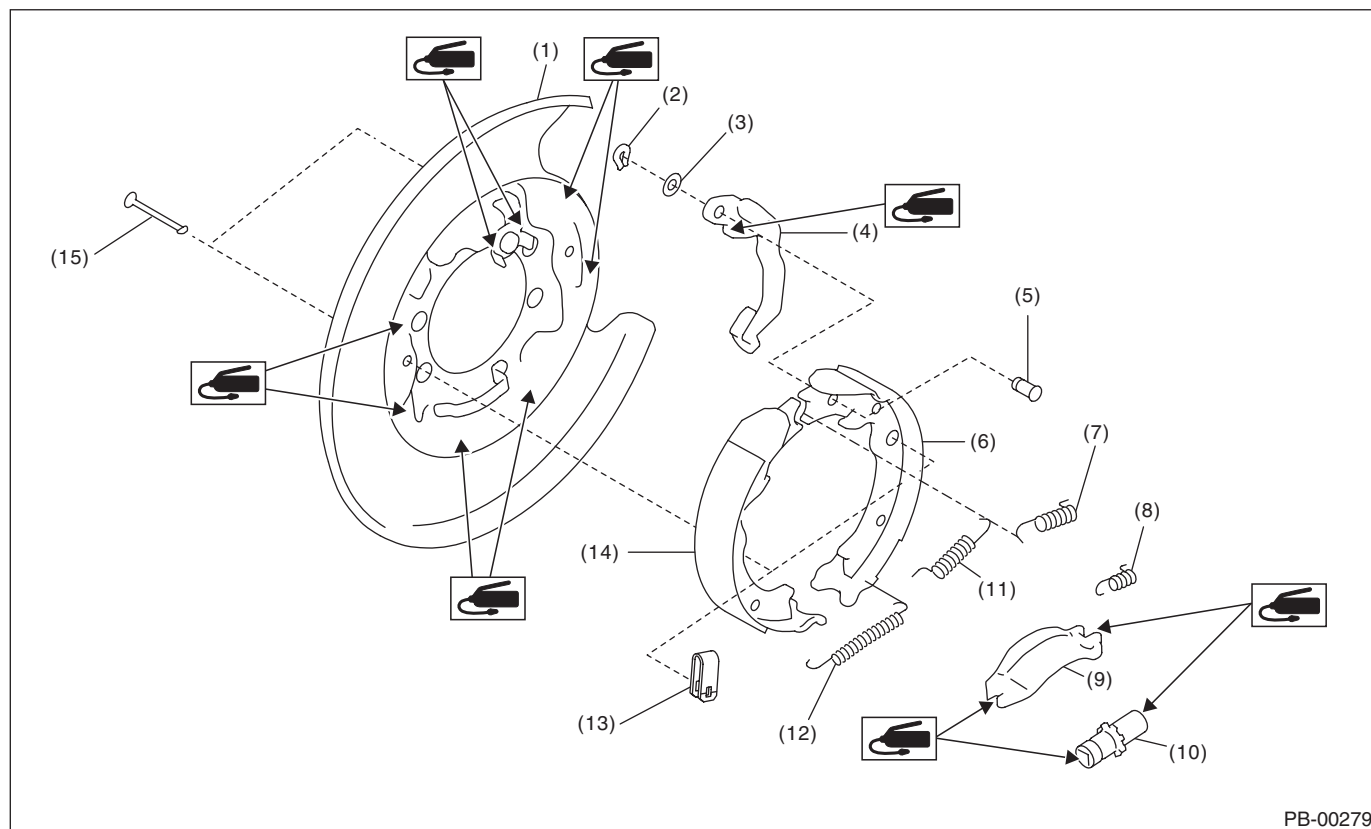
1. General Description

A: SPECIFICATION

| | | |
|---|---------|---|
| Model | | Rear disc brake |
| Type | | Electronic type, drum in disc brakes |
| Effective drum diameter | mm (in) | 190 (7.48) |
| Lining dimension (Length × Width × Thickness) | mm (in) | 165.0 × 30.0 × 3.5 (6.5 × 1.181 × 0.14) |
| Clearance adjustment | | Manual adjustment |

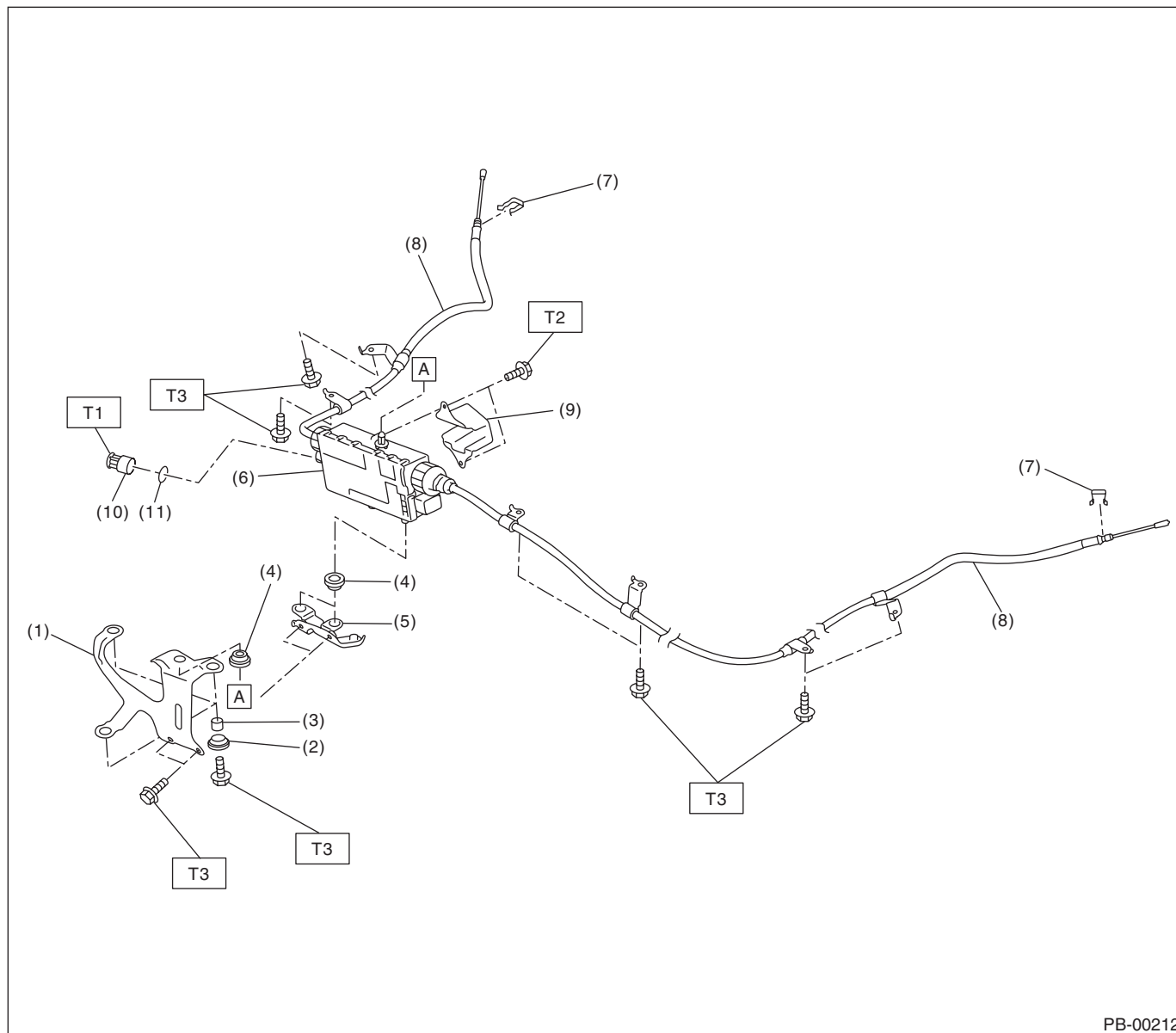
B: COMPONENT

1. PARKING BRAKE (REAR DISC BRAKE)



- | | | |
|------------------------------------|-----------------------------|-----------------------------------|
| (1) Back plate | (7) Secondary return spring | (13) Shoe hold-down spring |
| (2) Retainer | (8) Spring - strut | (14) Parking brake shoe (Primary) |
| (3) Wave washer | (9) Strut | (15) Shoe hold-down pin |
| (4) Lever | (10) Adjusting screw | |
| (5) Pin - parking lever | (11) Primary return spring | |
| (6) Parking brake shoe (secondary) | (12) Adjusting spring | |

2. PARKING BRAKE ACTUATOR



- | | |
|--------------------|-------------------------|
| (1) Upper bracket | (7) Clamp |
| (2) Bushing | (8) Parking brake cable |
| (3) Spacer | (9) Tank bracket |
| (4) Bushing | (10) Cap |
| (5) Bracket | (11) O-ring |
| (6) Brake actuator | |

Tightening torque: N·m (kgf·m, ft·lb)

T1: 3 (0.31, 2.2)

T2: 7.5 (0.76, 5.5)

T3: 18 (1.84, 13.3)

General Description

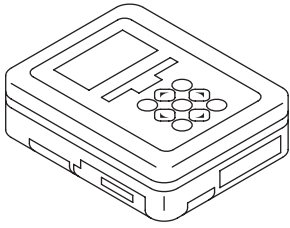
PARKING BRAKE

C: CAUTION

- Wear appropriate work clothing, including a helmet, protective goggles and protective shoes when performing any work.
- Before removal, installation or disassembly, be sure to clarify the failure. Avoid unnecessary removal, installation, disassembly and replacement.
- Vehicle components are extremely hot after driving. Be wary of receiving burns from heated parts.
- Use SUBARU genuine grease etc. or equivalent. Do not mix grease etc. of different grades or manufacturers.
- Be sure to tighten fasteners including bolts and nuts to the specified torque.
- Place shop jacks or rigid racks at the specified points.
- Make sure grease does not come into contact with the parking shoes.

D: PREPARATION TOOL

1. SPECIAL TOOL

| ILLUSTRATION | TOOL NUMBER | DESCRIPTION | REMARKS |
|---|-------------|-------------------------------|--|
|  ST1B022XU0 | 1B022XU0 | SUBARU SELECT MONITOR III KIT | Used for setting of each function and troubleshooting for electrical system. |

2. GENERAL TOOL

| TOOL NAME | REMARKS |
|----------------|---|
| Circuit tester | Used for measuring resistance, voltage and current. |