

# General Description

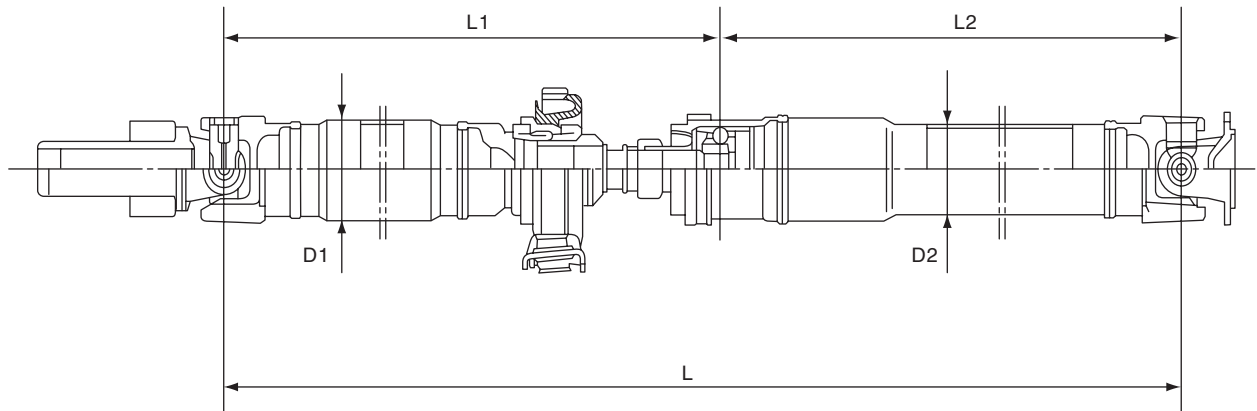
## DRIVE SHAFT SYSTEM

### 1. General Description

#### A: SPECIFICATION

##### 1. PROPELLER SHAFT

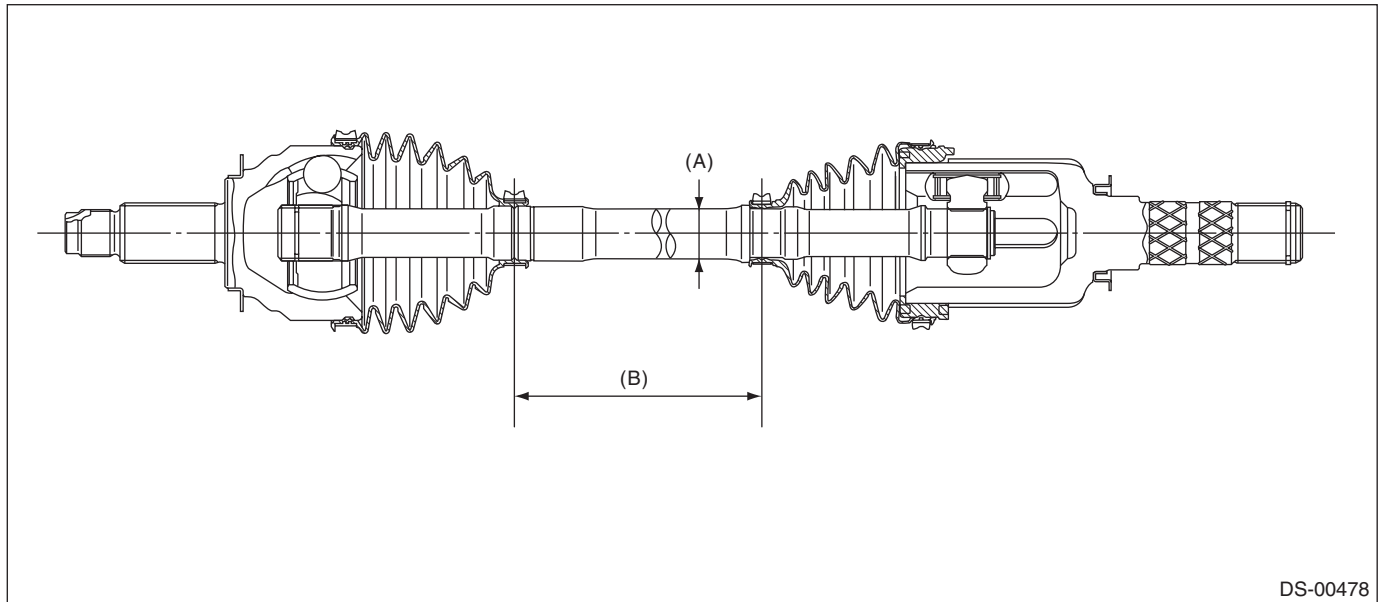
Car line		All models
Propeller shaft type		EDJ
Front propeller shaft Joint-to-Joint length: $L_1$	mm (in)	
	CVT (TR580)	675.5 (26.59)
	6MT	735.5 (28.96)
	5AT	562 (22.13)
Rear propeller shaft Joint-to-Joint length: $L_2$		mm (in)
		828 (32.6)
Outer diameter of tube:	mm (in)	
	$D_1$	63.5 (2.500)
	$D_2$	57.5 (2.264)



DS-00430

### 2. FRONT DRIVE SHAFT ASSEMBLY

Model	Type of drive shaft	Axle diameter $\phi$ mm (in)	Axle length mm (in)
All models	AC + AAR	22.67 (0.89)	352.4 (13.87)

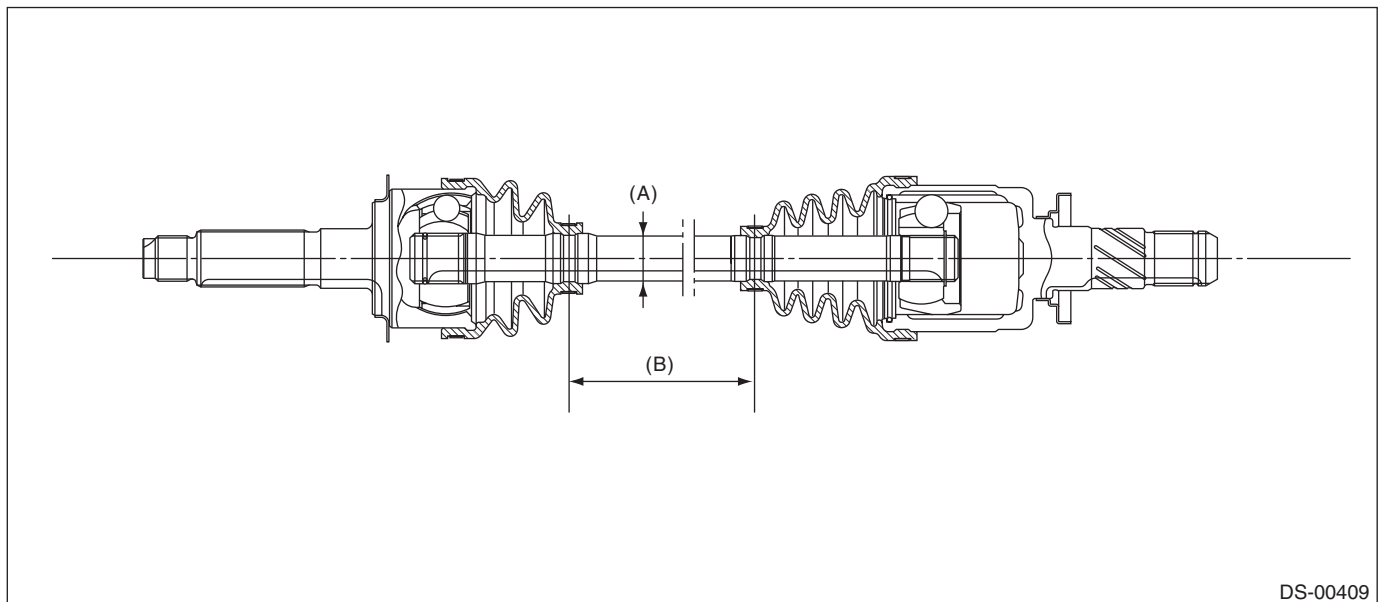


(A) Axle diameter

(B) Axle length

### 3. REAR DRIVE SHAFT ASSEMBLY

Model	Type of drive shaft	Axle diameter $\phi$ mm (in)	Axle length mm (in)
Sedan CVT	BJ + DOJ	22 (0.87)	400.6 (15.77)
Other than above	EBJ + DOJ	22 (0.87)	394.3 (15.52)



(A) Axle diameter

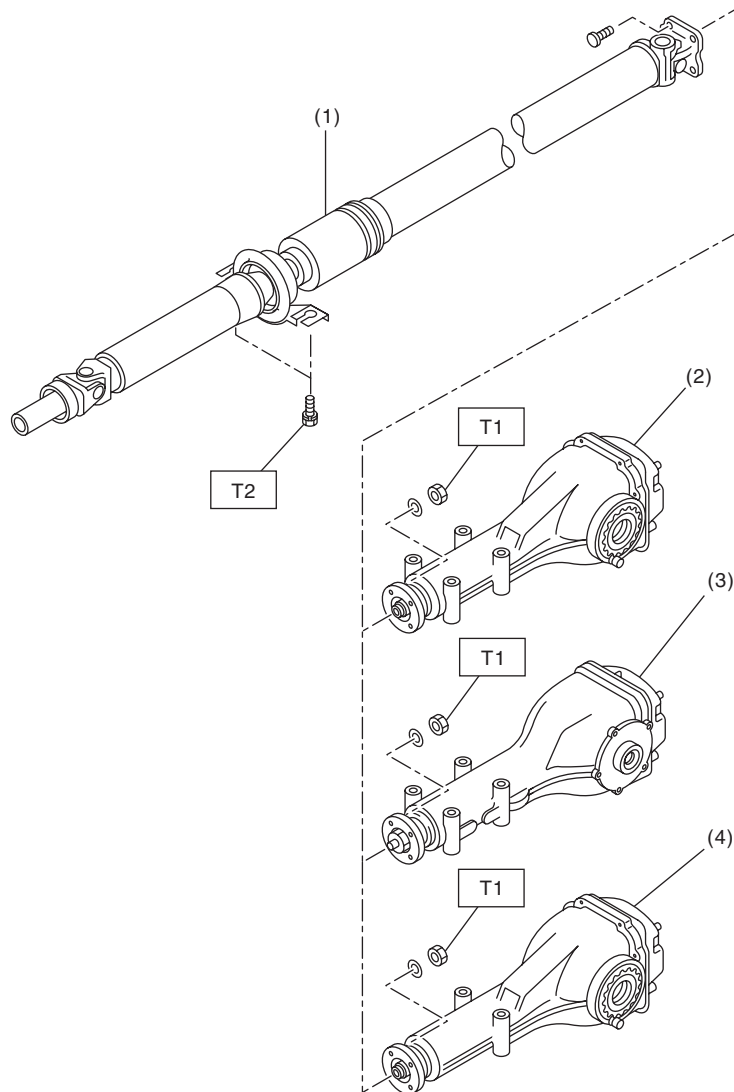
(B) Axle length

# General Description

## DRIVE SHAFT SYSTEM

### B: COMPONENT

#### 1. PROPELLER SHAFT



DS-00471

- (1) Propeller shaft
- (2) Rear differential (VA1-type)

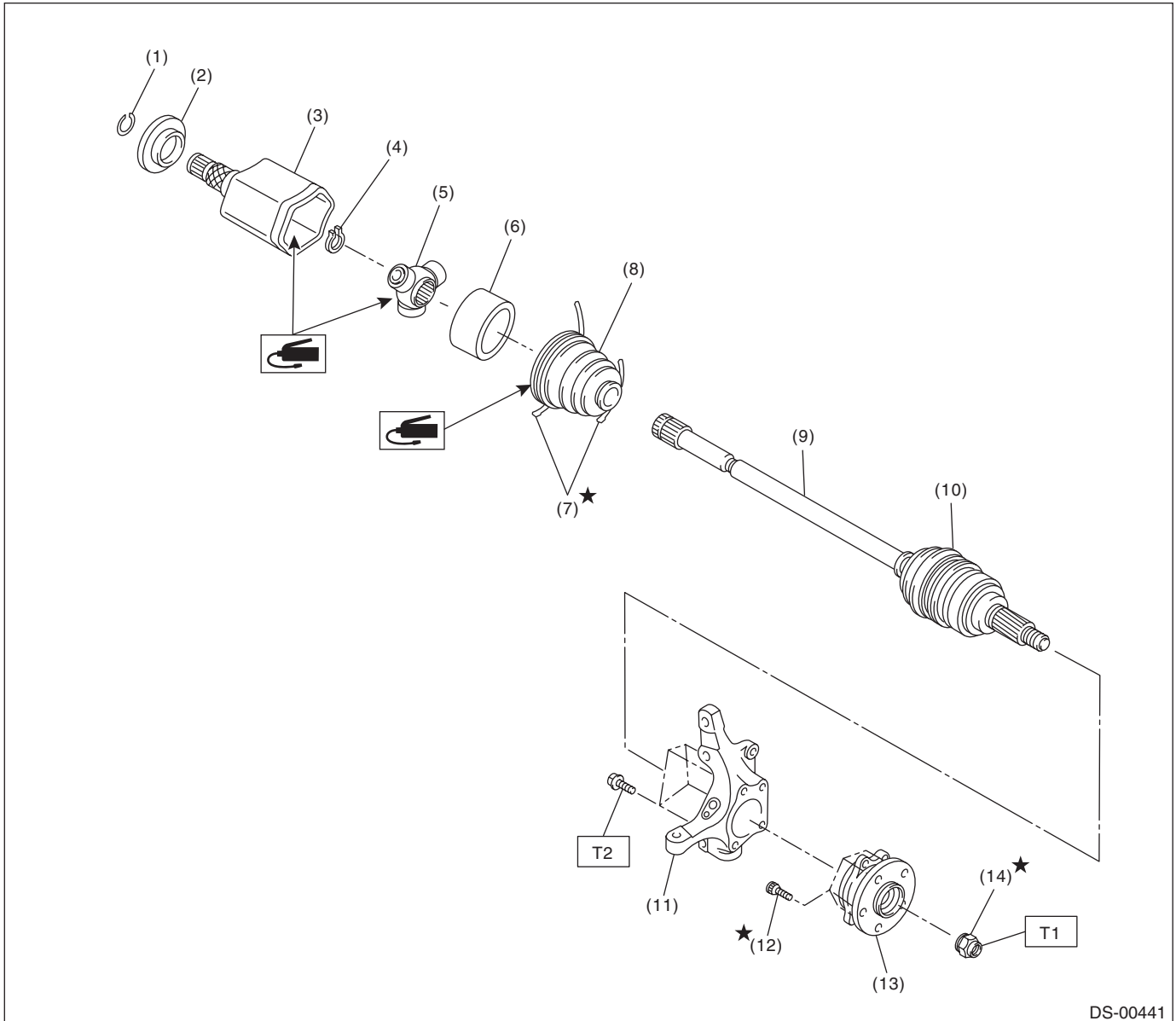
- (3) Rear differential (T-type)
- (4) Rear differential (VA2-type)

**Tightening torque: N·m (kgf-m, ft-lb)**

**T1: 31 (3.16, 22.9)**

**T2: 52 (5.3, 38.4)**

## 2. FRONT AXLE



DS-00441

- (1) Circlip
- (2) Baffle plate
- (3) Outer race (AAR)
- (4) Snap ring
- (5) Trunnion
- (6) Grommet

- (7) Boot band
- (8) Boot (AAR)
- (9) AC shaft ASSY
- (10) Boot (AC)
- (11) Front axle housing
- (12) Hub bolt

- (13) Front hub unit bearing
- (14) Axle nut

**Tightening torque: N·m (kgf-m, ft-lb)**

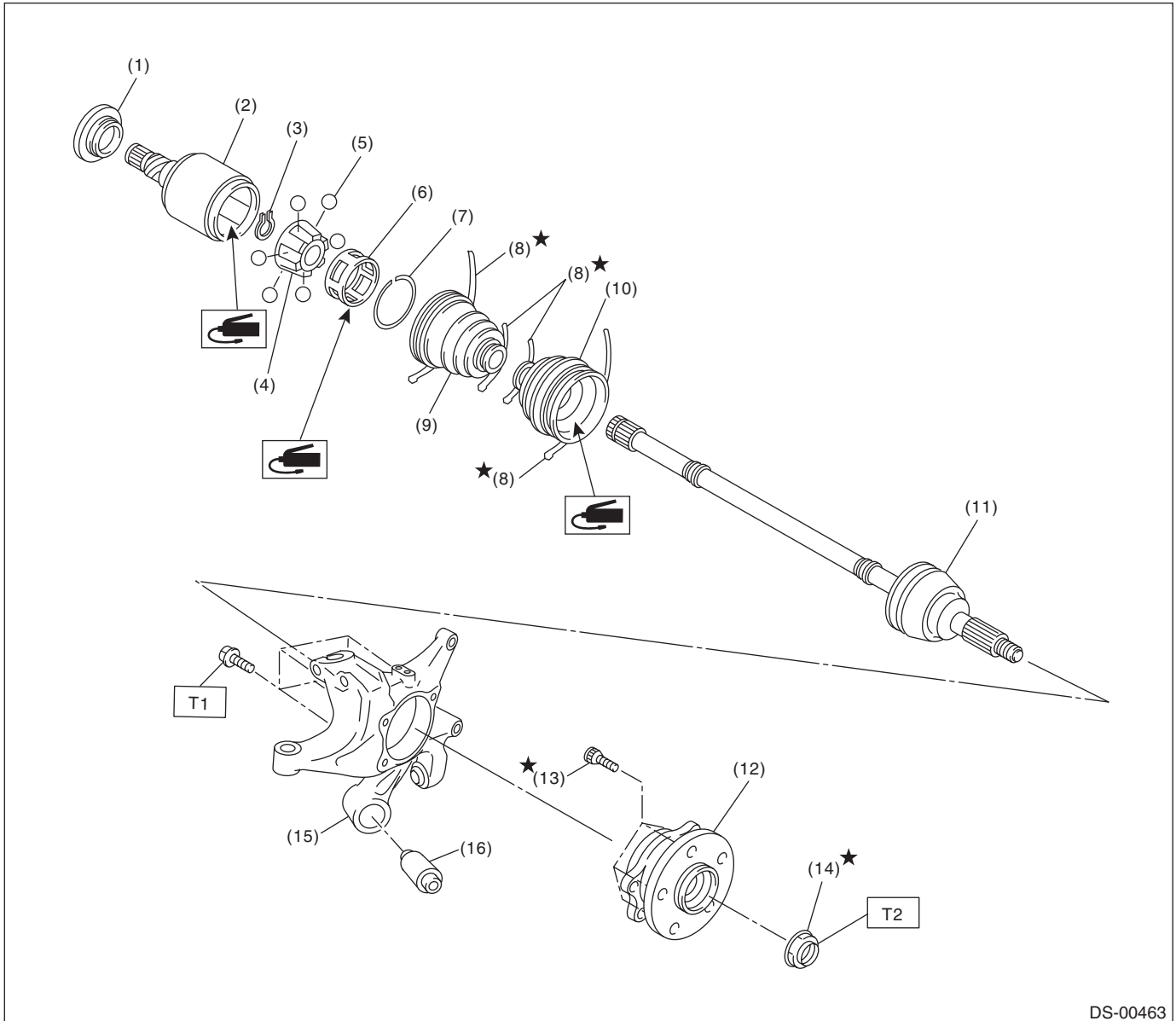
**T1: 220 (22.43, 162.3)**

**T2: 65 (6.63, 47.9)**

# General Description

## DRIVE SHAFT SYSTEM

### 3. REAR AXLE



DS-00463

- |                      |   |                        |
|----------------------|---|------------------------|
| (1) Baffle plate     | (8) Boot band   | (14) Axle nut          |
| (2) Outer race (DOJ) | (9) Boot (DOJ)  | (15) Rear axle housing |
| (3) Snap ring        | (10) Boot (BJ)  | (16) Rear bushing      |
| (4) Inner race       | (11) BJ shaft ASSY (sedan CVT model)<br>EBJ shaft ASSY (except for sedan CVT model) |                        |
| (5) Ball             | (12) Rear hub unit bearing  |                        |
| (6) Cage             | (13) Hub bolt   |                        |
| (7) Snap ring        |   |                        |

**Tightening torque: N-m (kgf-m, ft-lb)**

**T1: 65 (6.63, 47.9)**

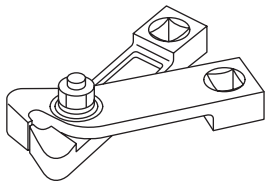
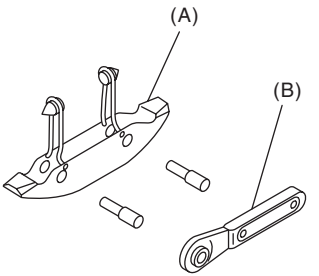
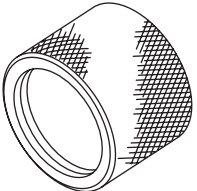
**T2: 240 (24.47, 177.0)**

## C: CAUTION

- Wear appropriate work clothing, including a helmet, protective goggles and protective shoes when performing any work.
- Remove contamination including dirt and corrosion before removal, installation or disassembly.
- Keep the disassembled parts in order and protect them from dust and dirt.
- Before removal, installation or disassembly, be sure to clarify the failure. Avoid unnecessary removal, installation, disassembly and replacement.
- Vehicle components are extremely hot after driving. Be wary of receiving burns from heated parts.
- Use SUBARU genuine grease etc. or equivalent. Do not mix grease etc. of different grades or manufacturers.
- Be sure to tighten fasteners including bolts and nuts to the specified torque.
- Place shop jacks or rigid racks at the specified points.
- Apply grease onto sliding or revolving surfaces before installation.
- Before installing snap rings, apply sufficient amount of grease to avoid damage and deformation.
- Before securing a part on a vise, place cushioning materials such as wood blocks, aluminum plates, or waste cloth between the part and the vise.

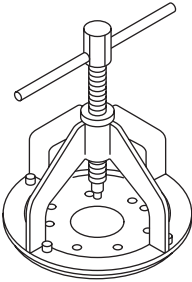
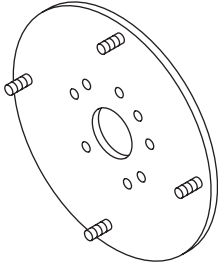
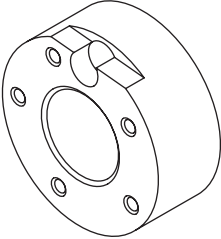
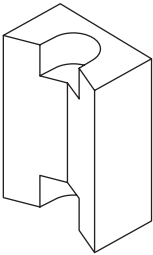
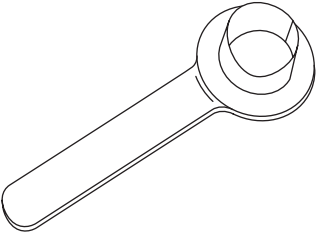
## D: PREPARATION TOOL

### 1. SPECIAL TOOL

ILLUSTRATION	Part No.	DESCRIPTION	REMARKS
 <p>ST28099AC000</p>	28099AC000	BOOT BAND PLIER	Used for tightening the boot band. (Front boot band)
 <p>ST-925091000</p>	925091000	BAND TIGHTENING TOOL	Used for tightening the boot band. (A) Jig for the band (B) Ratchet wrench
 <p>ST18675AA000</p>	18675AA000	DIFFERENTIAL SIDE OIL SEAL INSTALLER	Used for installing the differential side retainer oil seal.

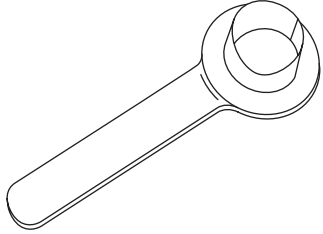
# General Description

## DRIVE SHAFT SYSTEM

ILLUSTRATION	Part No.	DESCRIPTION	REMARKS
 <p>ST-926470000</p>	926470000	AXLE SHAFT PULLER	<ul style="list-style-type: none"> <li>Used for removing the axle shaft.</li> <li>Used together with AXLE SHAFT PULLER PLATE (28099PA110).</li> </ul>
 <p>ST28099PA110</p>	28099PA110	AXLE SHAFT PULLER PLATE	Exchange with the plate of the AXLE SHAFT PULLER (926470000) to use.
 <p>ST-927080000</p>	927080000	HUB STAND	Used for assembling hub bolt in hub.
 <p>ST28399AG000</p>	28399AG000	HUB STAND	Used for extracting hub bolt.
 <p>ST28099PA090</p>	28099PA090	OIL SEAL PROTECTOR	<ul style="list-style-type: none"> <li>Used for installing the rear drive shaft to the rear differential.</li> <li>For protecting the oil seal.</li> </ul>

# General Description

## DRIVE SHAFT SYSTEM

ILLUSTRATION	Part No.	DESCRIPTION	REMARKS
 <p>ST28399SA010</p>	28399SA010	OIL SEAL PROTECTOR	<ul style="list-style-type: none"> <li>Used for installing front drive shaft into front differential.</li> <li>For protecting the oil seal.</li> </ul>

## 2. GENERAL TOOL

TOOL NAME	REMARKS
Tie-rod ball joint puller	Used for disconnecting joints.
Puller	Used for removing the ball joint from knuckle arm.
Dial gauge	Used for inspecting the propeller shaft run-out.
Extension cap	Used for preventing leakage of gear oil or ATF.
Crowbar	Used for extracting drive shaft.