

# General Description

VEHICLE DYNAMICS CONTROL (VDC)

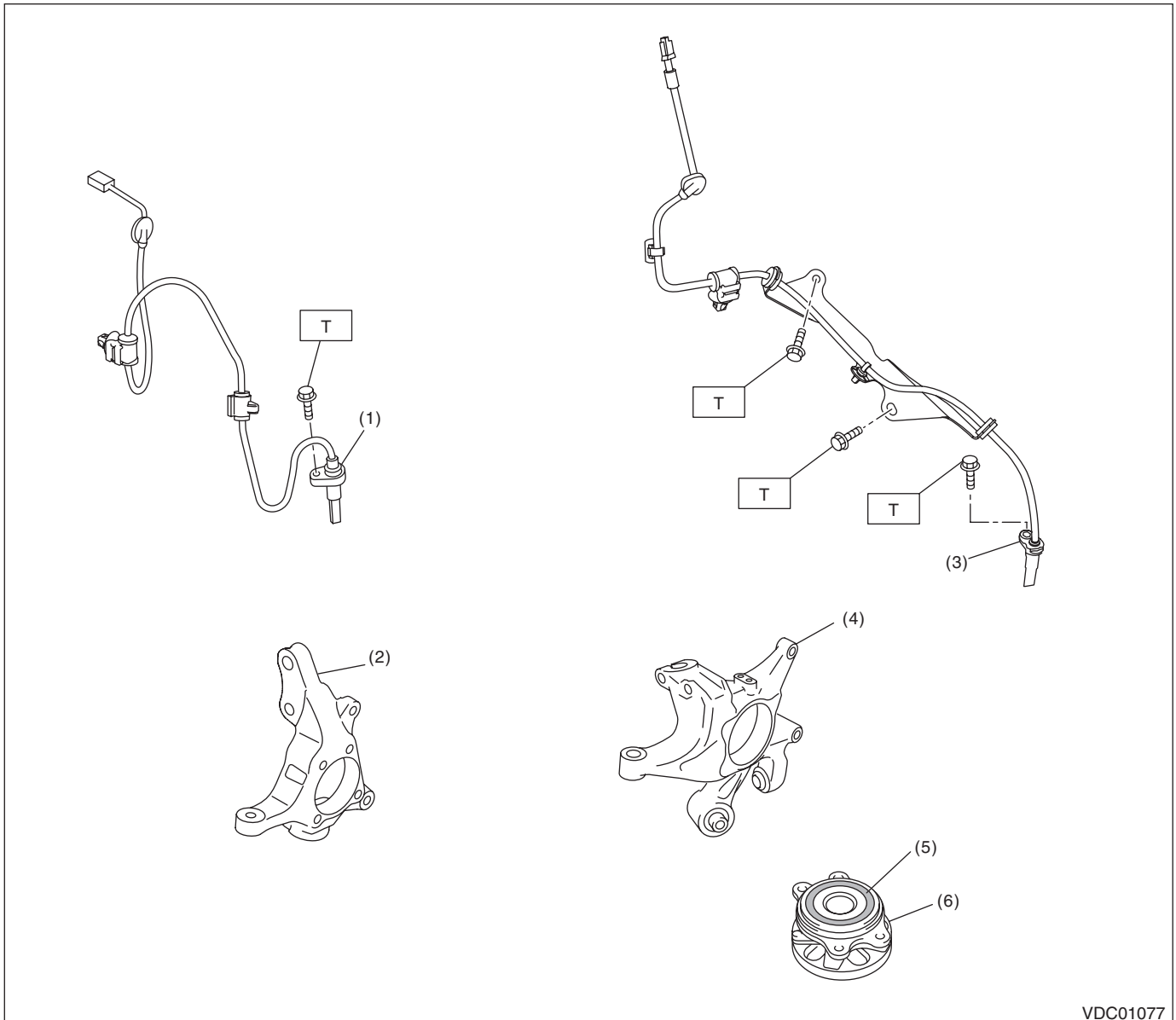
## 1. General Description

### A: SPECIFICATION

Item				Specification or identification
ABS wheel speed sensor	ABS wheel speed sensor gap (for reference)	Front		0.77 — 1.43 mm (0.030 — 0.056 in)
		Rear		0.64 — 1.56 mm (0.025 — 0.061 in)
	Identifications of harness (marks, color)	Front	Except for OBK model	S1 (Pink)
			OBK model	S2 (Blue)
		Rear	RH	S5 (Red)
			LH	S6 (Light green)
VDCCM&H/U Identification		Models without EyeSight		V6
		Models with EyeSight		V7

## B: COMPONENT

### 1. ABS WHEEL SPEED SENSOR



VDC01077

- |                                  |                       |
|----------------------------------|-----------------------|
| (1) Front ABS wheel speed sensor | (4) Rear axle housing |
| (2) Front axle housing           | (5) Magnetic encoder  |
| (3) Rear ABS wheel speed sensor  | (6) Hub unit bearing  |

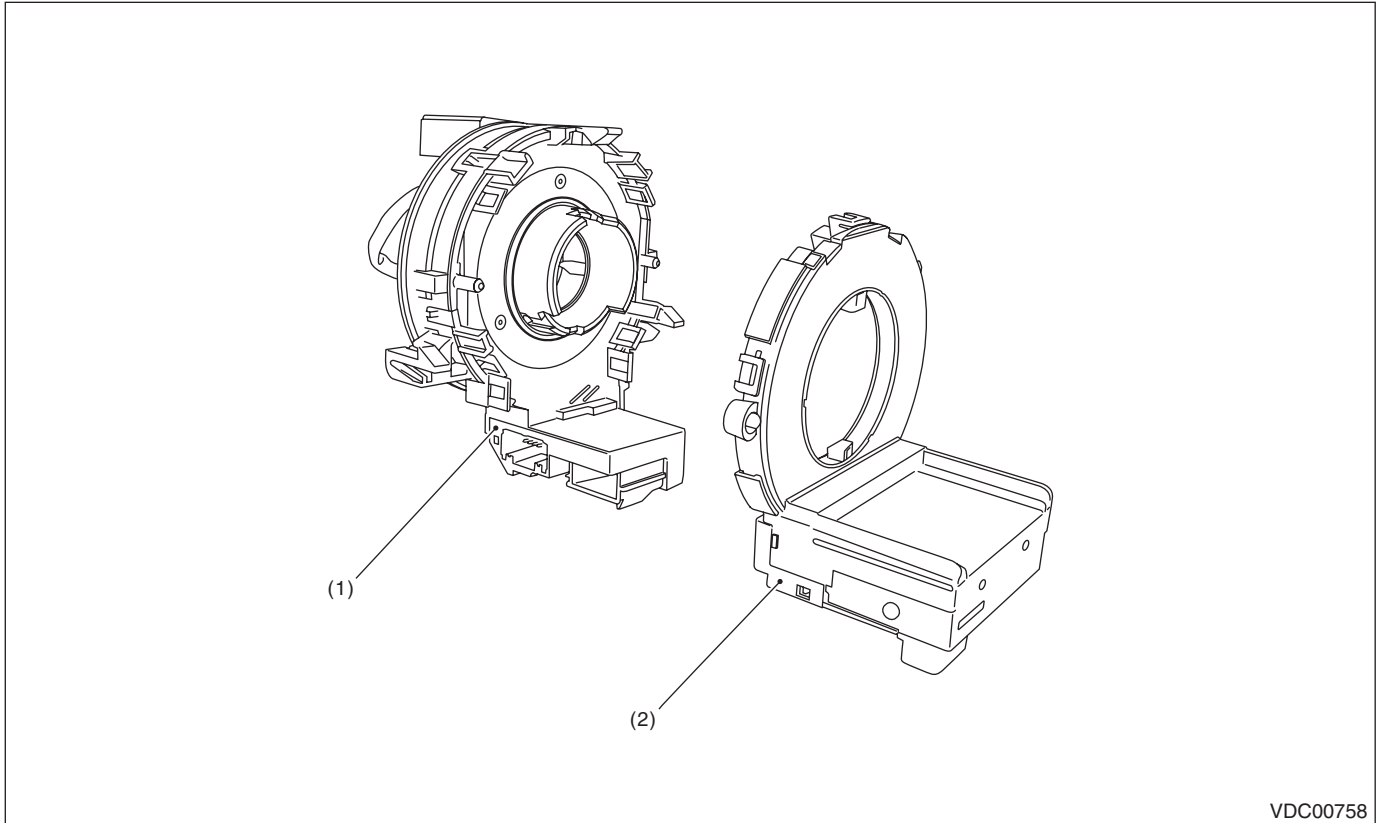
**Tightening torque: N·m (kgf-m, ft-lb)**

**T: 7.5 (0.76, 5.5)**

# General Description

VEHICLE DYNAMICS CONTROL (VDC)

## 2. STEERING ANGLE SENSOR



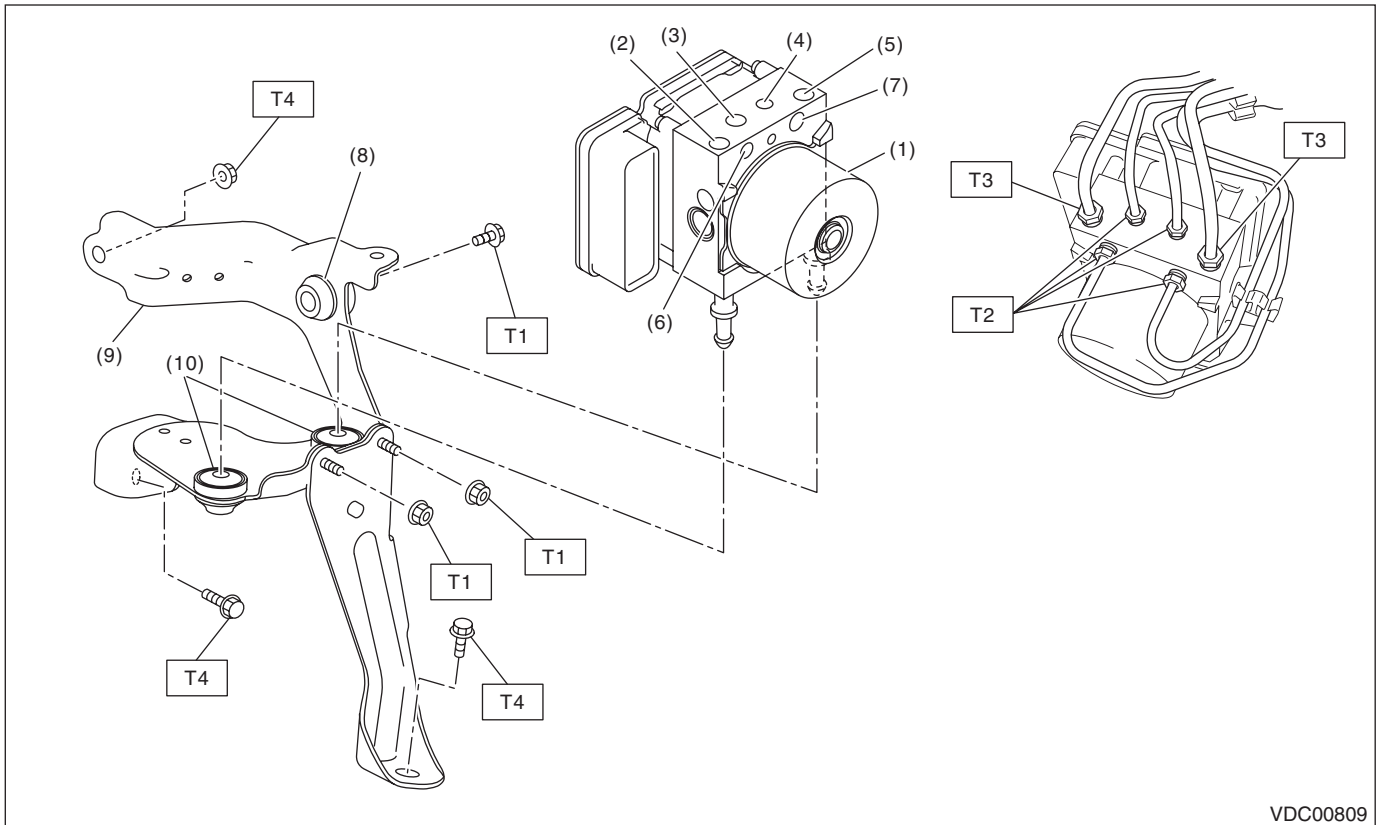
VDC00758

(1) Steering roll connector

(2) Steering angle sensor

## 3. VDC CONTROL MODULE AND HYDRAULIC CONTROL UNIT (VDCCM&H/U)

- Models without EyeSight



VDC00809

- |   |                     |
|---|---------------------|
| (1) VDC control module and hydraulic control unit (VDCCM&H/U) | (6) Rear RH outlet  |
| (2) Secondary inlet   | (7) Rear LH outlet  |
| (3) Front LH outlet   | (8) Damper & spacer |
| (4) Front RH outlet   | (9) Bracket         |
| (5) Primary inlet   | (10) Damper         |

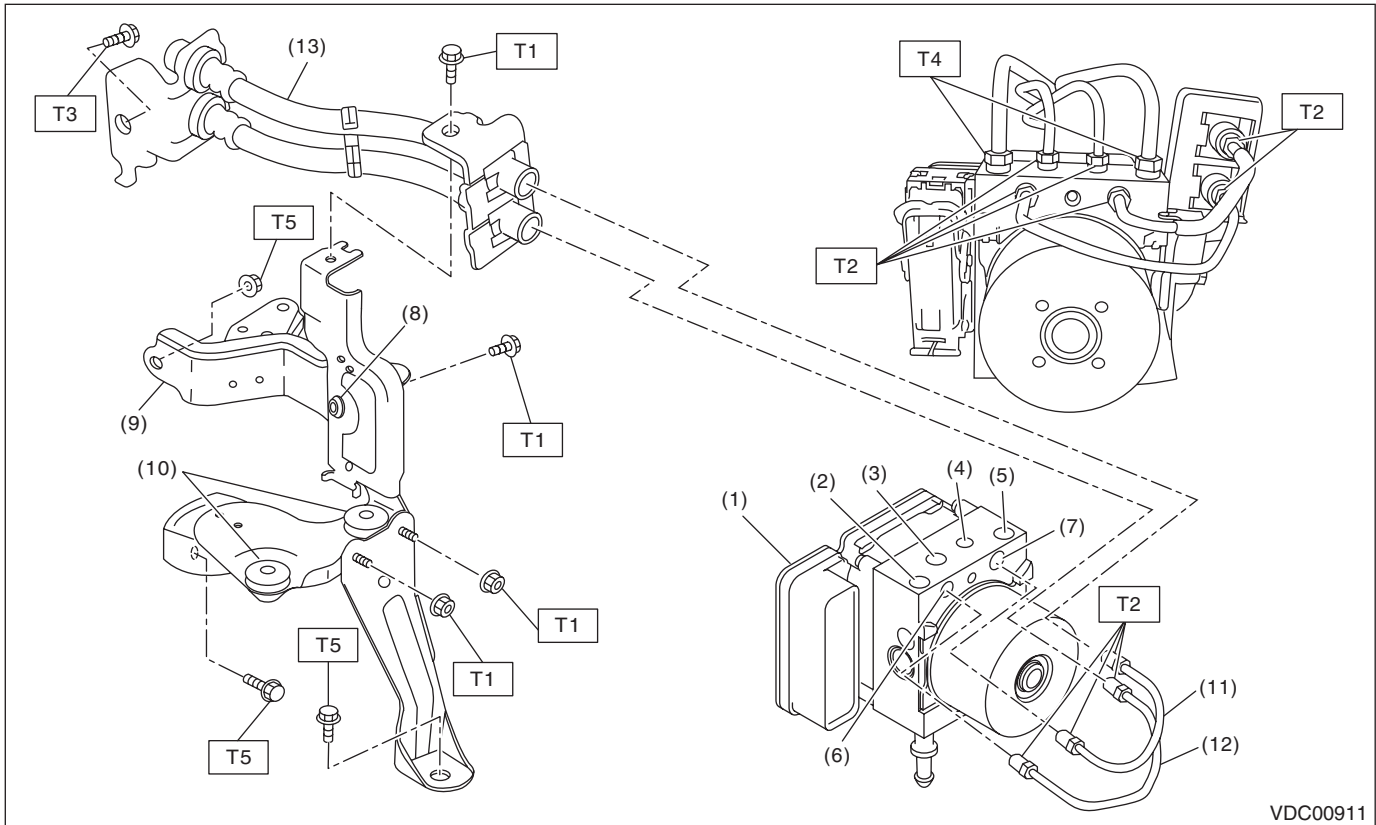
### ***Tightening torque: N·m (kgf-m, ft-lb)***

- |                                   |
|-----------------------------------|
| <b><i>T1: 7.5 (0.76, 5.5)</i></b> |
| <b><i>T2: 15 (1.53, 11.1)</i></b> |
| <b><i>T3: 19 (1.94, 14.0)</i></b> |
| <b><i>T4: 33 (3.36, 24.3)</i></b> |

# General Description

## VEHICLE DYNAMICS CONTROL (VDC)

### • Models with EyeSight



- |   |                     |
|---|---------------------|
| (1) VDC control module and hydraulic control unit (VDCCM&H/U) | (8) Damper & spacer |
| (2) Secondary inlet   | (9) Bracket         |
| (3) Front LH outlet   | (10) Damper         |
| (4) Front RH outlet   | (11) Pipe A         |
| (5) Primary inlet   | (12) Pipe B         |
| (6) Rear RH outlet  | (13) Hose ASSY      |
| (7) Rear LH outlet  |                     |

#### ***Tightening torque: N·m (kgf-m, ft-lb)***

***T1: 7.5 (0.76, 5.5)***

***T2: 15 (1.53, 11.1)***

***T3: 18 (1.84, 13.3)***

***T4: 19 (1.94, 14.0)***

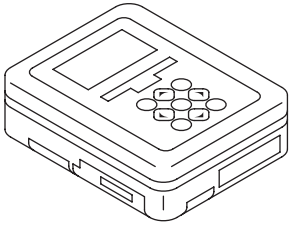
***T5: 33 (3.36, 24.3)***

### C: CAUTION

- Wear appropriate work clothing, including a helmet, protective goggles and protective shoes when performing any work.
- Remove contamination including dirt and corrosion before removal, installation or disassembly.
- Keep the disassembled parts in order and protect them from dust and dirt.
- Before disconnecting connectors of sensors or units, be sure to disconnect the ground cable from battery.
- Before removal, installation or disassembly, be sure to clarify the failure. Avoid unnecessary removal, installation, disassembly and replacement.
- Vehicle components are extremely hot after driving. Be wary of receiving burns from heated parts.
- Be sure to tighten fasteners including bolts and nuts to the specified torque.
- Place shop jacks or rigid racks at the specified points.
- When removing, installing or replacing the VDCCM&H/U, bracket, steering wheel or steering angle sensor, perform the 0 point setting for each sensor. <Ref. to VDC-20, ADJUSTMENT, VDC Control Module and Hydraulic Control Unit (VDCCM&H/U).>

### D: PREPARATION TOOL

#### 1. SPECIAL TOOL

ILLUSTRATION	TOOL NUMBER	DESCRIPTION	REMARKS
 ST1B022XU0	1B022XU0	SUBARU SELECT MONITOR III KIT	Used for setting of each function and troubleshooting for electrical system.

#### 2. GENERAL TOOL

TOOL NAME	REMARKS
Circuit tester	Used for measuring resistance and voltage.
Pressure gauge	Used for measuring oil pressure.
Oscilloscope	Used for measuring the sensor.