

## 5. ABS Sequence Control

### A: OPERATION

- 1) While the ABS sequence control is being performed, the operation of the hydraulic unit can be checked using the brake tester or pressure gauge after the hydraulic unit solenoid valve operation.
- 2) ABS sequence control can be started by the Subaru Select Monitor.

#### 1. ABS SEQUENCE CONTROL WITH SUBARU SELECT MONITOR

##### NOTE:

In the event of any trouble, the ABS sequence control will not operate.

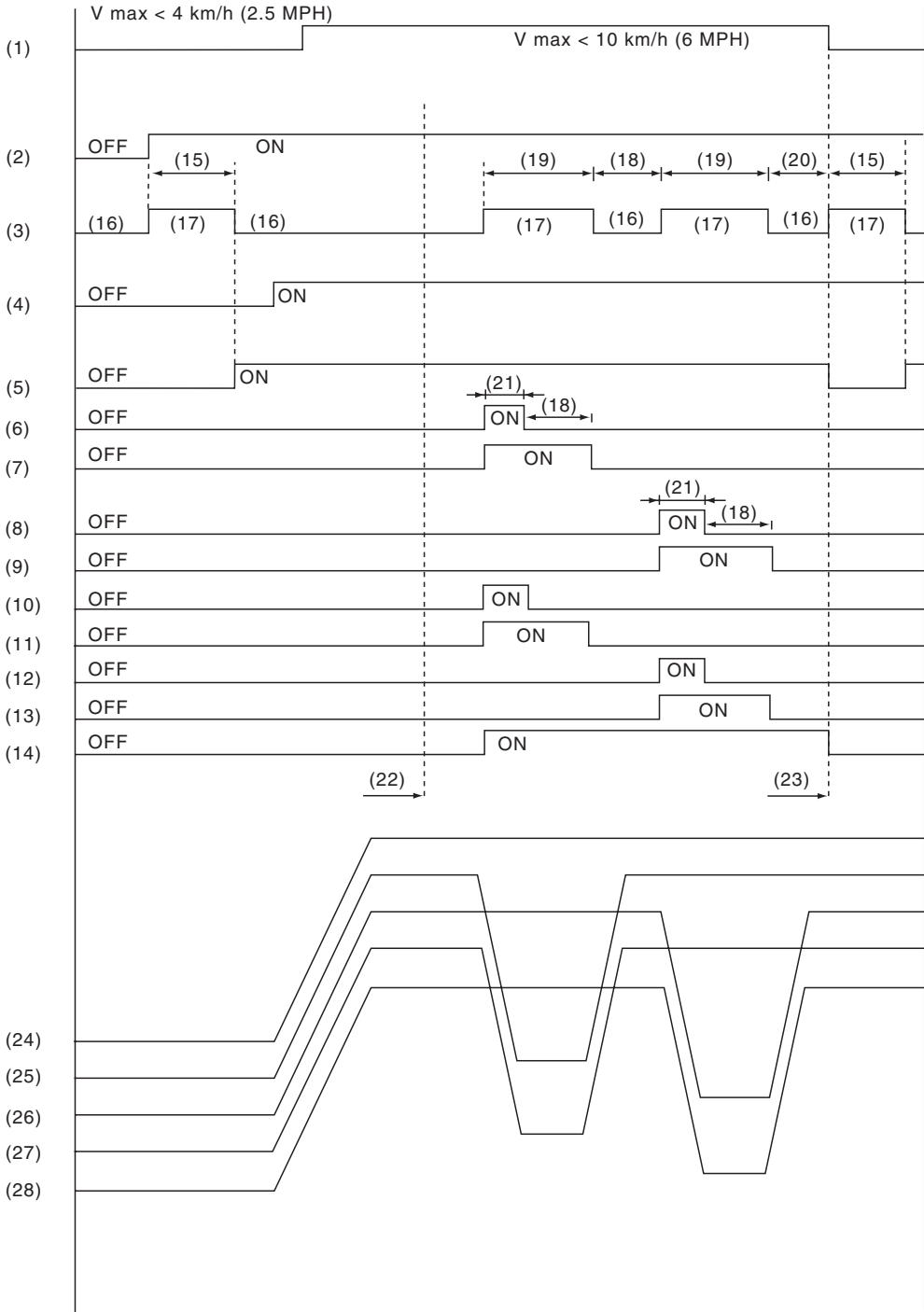
- 1) Connect the Subaru Select Monitor to data link connector.
  - (1) Run the "PC application for Subaru Select Monitor".
  - (2) On «Main Menu» display, select {Each System Check}.
  - (3) Select {Brake Control System}. When {ABS} is displayed, select the [OK] button.
  - (4) Select the {ABS Sequence Control Mode} from {Function Check Sequence}.
- 2) Follow the procedures displayed in the Subaru Select Monitor to execute the following.
  - (1) When using a brake tester, press the brake pedal pad with a force of 1,000 N (102 kgf, 225 lbf).
  - (2) When using a pressure gauge, press the brake pedal so that the pressure gauge indicates 3,500 kPa (36 kgf/cm<sup>2</sup>, 511 psi).
- 3) The brake system being operated is displayed on the Subaru Select Monitor.

# ABS Sequence Control

VEHICLE DYNAMICS CONTROL (VDC)

## 2. CONDITIONS FOR ABS SEQUENCE CONTROL

NOTE:  
The control operation starts at point A.



VDC00799

# ABS Sequence Control

VEHICLE DYNAMICS CONTROL (VDC)

- |                             |                             |                                 |
|-----------------------------|-----------------------------|---------------------------------|
| (1) All wheel speed         | (11) RR compression valve   | (20) 0.6 seconds                |
| (2) Ignition key            | (12) RL decompression valve | (21) 0.4 seconds                |
| (3) ABS warning light       | (13) RL compression valve   | (22) Point A                    |
| (4) Stop light switch       | (14) Pump motor             | (23) Reset                      |
| (5) Valve relay             | (15) 2 seconds              | (24) Master cylinder pressure   |
| (6) FL decompression valve  | (16) Light OFF              | (25) FL wheel cylinder pressure |
| (7) FL compression valve    | (17) Light ON               | (26) FR wheel cylinder pressure |
| (8) FR decompression valve  | (18) 1.0 second             | (27) RR wheel cylinder pressure |
| (9) FR compression valve    | (19) 1.4 seconds            | (28) RL wheel cylinder pressure |
| (10) RR decompression valve |                             |                                 |

## B: SPECIFICATION

### 1. CONDITIONS FOR COMPLETION OF ABS SEQUENCE CONTROL

When the following conditions develop, the ABS sequence control stops and ABS operation is returned to the normal control mode.

- When the speed of at least one wheel reaches 10 km/h (6 MPH).
- When the brake pedal is released during ABS sequence control and the stop light switch is becomes OFF.
- After completion of ABS sequence control.
- When a malfunction is detected.