

## 19.Rearview Mirror

### A: REMOVAL

#### 1. NORMAL MIRROR TYPE

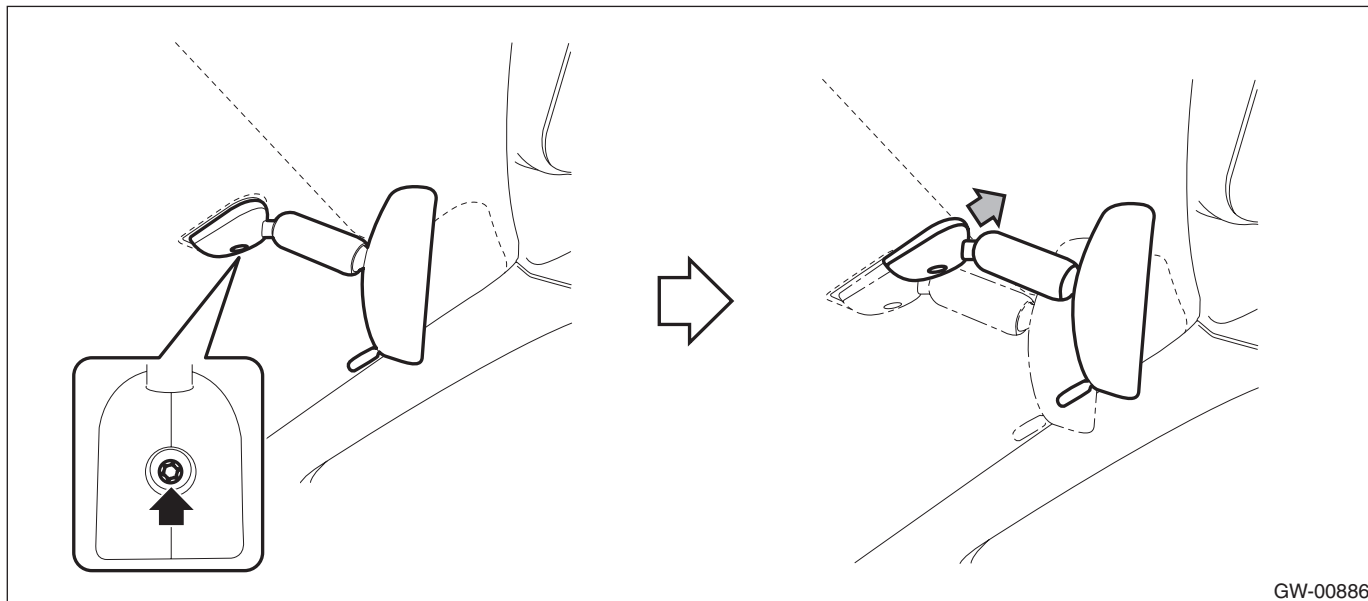
##### CAUTION:

**Be careful not to damage the mirror surface and windshield glass.**

1) Remove the TORX® bolt, and then slide the rear view mirror to remove.

**Preparation tool:**

**TORX® T20**



GW-00886

2) If the mirror mounting is damaged, replace the windshield glass.

#### 2. HOME LINK TYPE

##### CAUTION:

**Be careful not to damage the mirror surface and windshield glass.**

1) Disconnect the ground cable from battery.

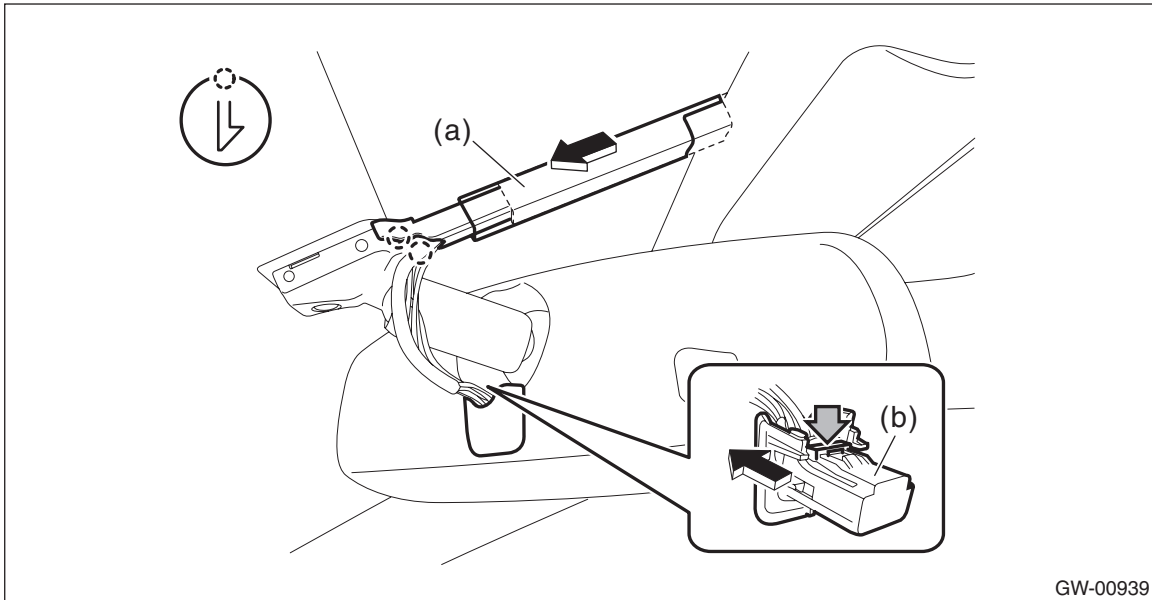
2) Remove the rearview mirror.

(1) Slide the upper section of the cover, and release the claws in the lower section, then remove the harness cover (a).

- (2) Disconnect the rearview mirror connector (b).

**CAUTION:**

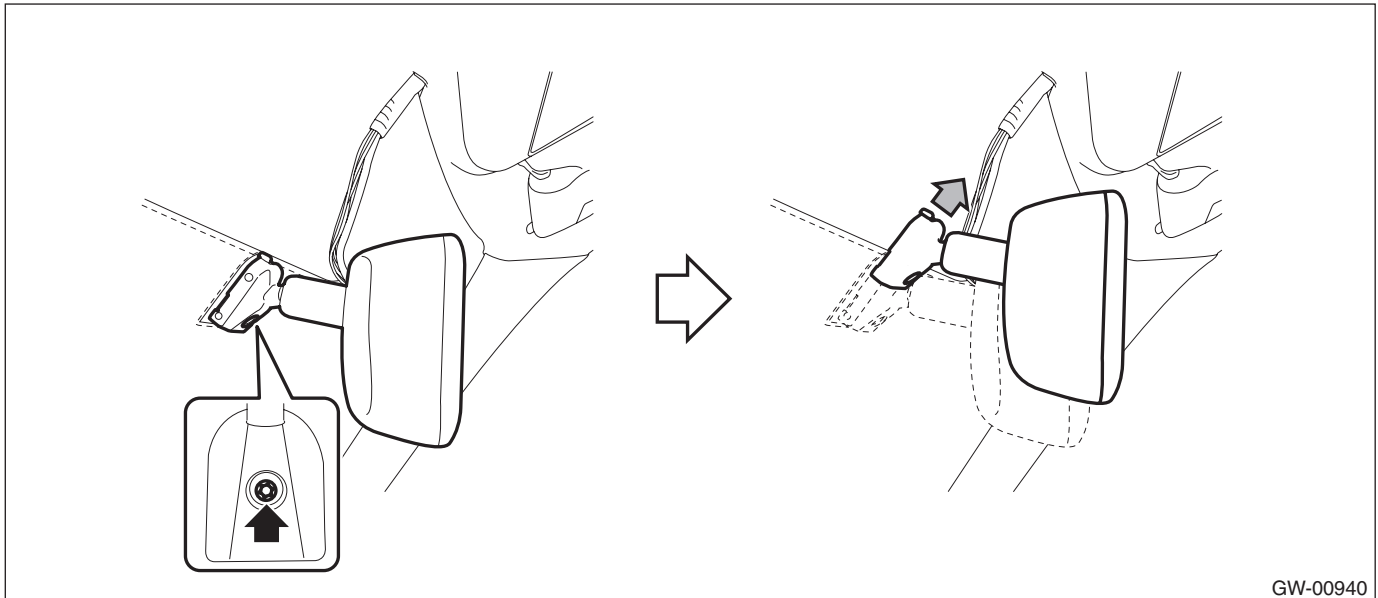
**Be careful not to pull the harness.**



- (3) Remove the TORX® bolt, and then slide the rear view mirror to remove.

**Preparation tool:**

**TORX® T20**



- 3) If the mirror mounting is damaged, replace the windshield glass.

### **B: INSTALLATION**

#### **CAUTION:**

When tightening the mounting TORX® screw, be sure to observe the tightening torque. Otherwise, the mount may be damaged in over-torque conditions.

Install each part in the reverse order of removal.

#### ***Tightening torque:***

*Refer to “COMPONENT” of “General Description”. <Ref. to GW-6, MIRROR, COMPONENT, General Description.>*

### **C: INSPECTION**

Check the mirror and mirror mount for damage.